

Making mobile phones safer

Centre makes breakthrough to reduce harmful emissions

The University's Centre for Mobile Communications Research (CMCR), which was established in 2000 in the Department of Electronic and Electrical Engineering, has made some major breakthroughs in its antenna technology that could enable safer mobile phone communication.

Using their work associated with GPS (Global Positioning System) technology, researchers have managed to reduce emissions into the body by as much as 85%. The CMCR achieved its breakthrough in antenna designs through innovative laser technology and super computing modelling techniques. This puts the University in an excellent position to be the leaders in low SAR (Specific Absorption Rate) solution providers in the UK for the Telecom industry. SAR is the parameter that measures

Sciences Research Council, and it has already gained over £1 million in contracts covering many aspects of mobile communications such as GSM, 3G and Bluetooth™.

Professor Yiannis Vardaxoglou, head of the CMCR, commented, "The issue of mobile phone health is escalating rapidly and mobile handsets are now required to clearly state their SAR rating. Therefore it's not surprising that a number of interested parties are examining ways of reducing

SAR levels. For this reason we have made major investments in facilities such as super computers and a Dosimetric Assessment System which enables the radiation absorbed by a 'phantom head' to be accurately measured."

One company which is outsourcing research work to the CMCR is

Wellingborough-based miniature antenna manufacturer Sarantel, as the company's CEO, Barrie Foley, confirmed. "The CMCR at Loughborough University has some of the best super computer Radio Frequency modelling facilities in Europe. Design evaluations, which



previously took many weeks, can now be completed in just a few days and so it makes a lot of sense for us to capitalise on their outstanding experience and facilities. This technology is real and can be delivered to the market, unlike many claims by various organisations in the past."

Sarantel and Loughborough have previously worked together on antenna designs for GPS handsets based on the company's PowerHelix™ technology. These antennas use helical copper tracks etched onto a ceramic puck and are finding wide acceptance with GPS handset and wireless location device manufacturers. They offer many technical benefits such as a low 'Near Field' which enables weak GPS satellite signals to be captured even when the equipment is in close proximity to buildings or the body of the user.

A possible by-product of the work done with Sarantel is the reduction of mobile phone antenna Near Fields in order to reduce the SAR rating of handsets. Professor Vardaxoglou explained, "If the near field could be reduced to a few millimetres with a high level of predictability, then a low SAR antenna could be a real possibility."



Professor Yiannis Vardaxoglou (L) with Sarantel CEO Brian Foley.

the amount of radiation from mobile phone handsets absorbed by human tissue.

The Centre's vital research to develop the definite low SAR mobile phone antenna has been recognised with grants from the Engineering and Physical

Inside



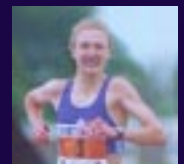
3

Open for business. Innovation Centre for fledgling companies launched.



8

A big splash! New Olympic-sized pool now open.



9

Sporting heroes. Students bring home 17 medals from Commonwealth Games.



11

Thank you! Loughborough pays tribute to trio's unstinting service.

news@lboro is published by the Publicity Office, Rutland Hall, Loughborough University, Loughborough LE11 3TU
Tel: 01509 222224
Fax: 01509 223902
Email: news@lboro.ac.uk

Editor: **Hannah Baldwin**
Ext: 2239
Email:

H.E.Baldwin@lboro.ac.uk

Layout by
Helen McCullam and
Hannah Baldwin

Unless otherwise stated,
photos by
Media Services

Printed by
John Price & Sons
(Printers) Ltd

Contributions to
news@lboro should
usually be made
on disk or by emailing
news@lboro.ac.uk

Due to space restrictions,
not all submitted material
can be printed. The editor
reserves the right
to amend or withdraw
articles without notice.

Extracts from
news@lboro
should not be reproduced
without prior permission
from the Publicity Office.

Issue No 16:
Tuesday 22 October 2002
Copy deadline:
5pm Tuesday 8 October
2002

news@lboro is also
available online
in pdf format at
www.lboro.ac.uk/service/
publicity/newsatlboro/
newsletter15.pdf

Appeal submitted for Harry French accommodation

Following the decision by Charnwood Borough Council in June to refuse permission for the University's latest plans to redevelop the Harry French student accommodation on Ashby Road, UNITE – the University's partner in the project, to whom the University has now transferred ownership of the property – has submitted a written appeal against the decision.



The plans for the Harry French site involve the replacement of the current outdated facilities with high quality new accommodation. A number of consultation meetings took place over several months to enable residents to voice their opinions on and concerns about the scheme and to facilitate compromise wherever possible. In response to residents' feedback, the University and UNITE amended and revised several parts of the proposed scheme.

"While the design changes made to our plans appear to have been acceptable, the planning application was refused on the basis of the potential increased student impact on the area," explains

Roy Hill, director of estates services. "The University and UNITE felt that, having consulted extensively on the proposed scheme and having made considerable amendments to the plans in response to feedback, we had exhausted all possible options and, given the grounds for refusal, had no alternative at this stage but to appeal."

Acknowledging that the issue of student behaviour needs to be addressed, the registrar John Town says, "We're currently exploring a number of possible options to tackle this problem, including the introduction of night-time University patrols along the Ashby Road corridor and CCTV. Placing more students in University-managed accommodation also enables us

to control their behaviour better – which is one of the reasons we need to pursue the redevelopment of the Ashby Road halls."

"Of course, we can't stop students walking from the campus to the town and back," the registrar points out. "Even if – as some have suggested – we located all our halls of residence on the campus, the students would still want to go to the shops, cafes, cinema, bars and so on in the town, and I'm certain that these businesses wouldn't want to lose the students' considerable custom. However we can work towards reducing the impact of the students on the Ashby Road corridor, particularly at night."

news@lboro

Update on structural deficits process

At its meeting on 17 July, Council approved the formation of a redundancy committee to consider the compulsory severance of two academic posts in the area of chemical engineering. Although re-deployment and early retirement schemes were introduced for this area, and the University was, in the main, successful in achieving the desired change by voluntary means, it was reluctantly concluded that the next stage of the agreed process must be activated.

This stage was initiated on one previous occasion, in July 2001, for the Department of Electronic and Electrical Engineering, but the required savings were subsequently achieved by voluntary means and redundancies did not occur.

The University has been involved in the process of restructuring since April 2000, with a view to ensuring its future academic vitality and maintaining its financial strength. Rapid changes in industry and commerce have

changed the patterns of demand for the University's courses and the skills of its staff. The University's financial position is sound, however, and it does not expect the proposed number of redundancies to increase.

Loughborough Innovation Centre opens for business

The campus-based Loughborough Innovation Centre, one of the East Midlands' largest incubation centres for high growth start up companies, opened for business on 1 August, with 40,000 ft² of office and workshop space available for up to forty fledgling companies. Based in the building formerly occupied by Aeronautical and Automotive Engineering, the Innovation Centre aims to encourage technology, innovation and employment in the Loughborough area, acting as a magnet for inward investment. The initiative is a collaboration between the University, Loughborough Advanced Technology Initiative (LATI), Charnwood Borough Council and Pronovus, and is supported by funding from the East Midlands Development Agency's Innovative Cluster Fund.

"Loughborough Innovation Centre will provide flexible, affordable space for start-ups in a supportive environment where they can easily access expertise and network with similar companies," says Jo Derbyshire, the University's director of intellectual property. "Our tenants will be able to take full advantage of the University's expert team of small business and intellectual property advisors, and we will provide access to funding from grants and venture capital, and introduce the tenants to business mentors. This highly supportive environment is crucial in the early years to ensure a higher rate of company survival and an accelerated growth rate."

Since work began on the Centre last September, it has attracted considerable interest from entrepreneurial technology-based companies from within the East Midlands region and further afield. University spin-out company Laser Optical Engineering Ltd is one of the new companies waiting to make the move; with widespread commercial acclaim for pioneering work in laser safety, high power

laser processing and laser measurement, moving to the Innovation Centre will enable the company to build upon its existing status and achievements.

Loughborough Innovation Centre offers fully serviced offices, laboratory and workshop space, communal space and meeting rooms. Tenants of the Centre will enjoy access to the wealth of on-campus facilities, including some of the best sports facilities in Britain, an extensive library, media and hospitality services.

Units are still available at competitive prices for people with new and early stage companies and business ideas with the potential for growth, and University enterprise manager Pollyanna Multon (ext 8679) would be delighted to hear from potential tenants.



Fund set to help transform research into commercial reality

Loughborough is leading a £4m venture to support the commercialisation of innovative research from five of the East Midlands' universities. Launched in June, the Lachesis Fund provides venture capital to support promising new technologies arising from research at the Universities of De Montfort, Leicester, Loughborough, Nottingham and Nottingham Trent.

The Fund aims to fill the funding gap that exists for early-stage technologies with the greatest potential for high growth and investment return. It will enable these technologies to be commercialised and licensed, new businesses to be started and will in turn enhance their prospects of attracting further venture capital.

Jo Derbyshire, director of the intellectual property office, welcomed the launch of the Lachesis Fund. "This is wonderful news for the partnership universities, for the East Midlands region and further afield. The Lachesis Fund will play a key role in wealth creation, encouraging entrepreneurship, nurturing high growth business and helping companies of all sizes access the partnership's extensive research capabilities through technology transfer."

Dr Dan King, the Lachesis coordinator, adds, "The fund will work closely with the partner universities' technology transfer units to identify and commercially exploit its emerging technologies. We aim to create an 'evergreen' fund that will

continually be replenished by income from its successful investments."

Collectively the five university partners boast an impressive portfolio of research activity and intellectual property. In 1999-2000 their combined income from research grants and contracts stood at £110m and over 100 UK patents were filed. They have collectively spun out over 65 companies and the Lachesis Fund will further boost this prolific rate of spin-out company formation. The Fund will also enable a greater flow of technology commercialisation from the universities, providing a strong portfolio of opportunities for third party investment in spin-outs and technology transfer.

Further details of the Lachesis Fund are available at lachesisfund.co.uk

Council report

Highlights from the meeting on 17 July 2002

July's meeting began with the Vice Chancellor reporting on some of the highlights of a successful year: Loughborough has improved in all newspaper league tables, and this month brought to a close a superb year for the Students' Union Executive (see p5) – the Rag record was broken again, more students than ever took part in Community Action, and the BUSA Championships were retained once more. The Vice Chancellor then summarised his commentary on the recent AUT survey, before concluding with the announcement that UCEA (Universities and Colleges Employers Association) had made a final pay offer which averaged 3.5%; unions are now in consultation with their members.

A development fund to support PhD studentships has enabled 60 new students to enrol, and a flier to encourage companies to sponsor

Loughborough research scholars has now been produced. Research grant applications for this year are excellent, with £26.1m already awarded and decisions on awards totalling £54m still outstanding. Applications for taught programmes are also encouraging, with international postgraduate applications substantially increased.

Now open for over eighteen months, the Engineering Building – which helped to enable the creation of an integrated engineering faculty – had accrued considerable benefits to the University, the Dean of Engineering noted in a special report. Student intake numbers are growing at 10% per annum, against a national decline, and the significant investment in research infrastructure was a contributory factor in the departments' grade 5 award in the RAE. Income from research grants and contracts has

increased by 60% in two years, and the award of the largest ever grant by EPSRC – £14.2m for the Innovative Manufacturing and Construction Centre (as reported in **news@lboro** 10) – was gained on the basis of the quality of Loughborough's staff. Many highly experienced researchers and several visiting professors of international repute have been attracted to work at Loughborough because of the University's clear commitment to engineering; and that commitment has also enabled significant progress with two of the University's key strategic industrial partners.

Council also discussed the situation in Chemical Engineering (see p2), before the meeting concluded with the Chairman thanking those members of Council who are stepping down, for their contributions and commitment. The next meeting of Council is scheduled for 25 October.

news@lboro

Textile designs brighten NHS hospitals

The stunning textile designs of four LUSAD students have been selected by the national charity Paintings in Hospitals to form part of a unique network of art displayed in hospitals and hospices nationwide. A total of thirteen pieces of work by finalists Georgie Kirwan-Taylor, Sarah Vincent, Naomi Bass and Carley Anne Dunn were sold to the charity in the private viewing of their degree show this June.

"We're delighted at the decision to include our students' work in

the collection, and hope the displays will be a source of great pleasure," said Kerry Walton, a senior tutor in Textiles. "This is an exciting and interesting opportunity for our graduates to have their work on public display. The students have worked very hard and this recognition is well deserved."

Trevor Dickson, chairman of Paintings in Hospitals for the Midlands area, personally selected the textile pieces at the School of Art and Design's annual degree show in early June. "I was very impressed by the excellent quality of work at

the degree show," he noted. "One of the areas of work we make purchases in is textiles, and the bright colours and striking designs of the work



Sarah Vincent's design.

selected will be ideal for display in hospitals."

Paintings in Hospitals is a registered charity that lends pictures to hospitals and other healthcare facilities throughout the British Isles, enhancing the healthcare environment for patients, staff and visitors. All items selected for the charity's collection are original artworks purchased from exhibitions, artists, galleries and art colleges, and the work featured varies in style to include oil paintings, watercolours, prints, photographs, textiles and collages.



Georgie Kirwan-Taylor's design.

In brief

New Department and School

At its meeting in July, Council approved the establishment of the Department of Systems Engineering, with effect from 1 August 2002, and the appointment of Professor Mike Woodhead as its Head until 31 July 2005. At the same meeting, the establishment of the School of Aeronautical and Automotive and Systems Engineering was agreed, with Professor Tim Gordon as its Director from 1 August 2002 to 31 July 2005.

Off campus parking restrictions

A trial scheme to prevent staff and students from inconsiderately parking their cars on residential streets outside the campus has been given the green light by Charnwood Borough Council. During the 18 month long experiment, a total of 21 roads will be subject to restrictions, which will allow only residents and their visitors to park in those streets. The scheme was suggested to the Council by Estates Services following discussions with local residents, the police and the Council about ways to tackle the problem. Some of the cost of putting up signs will be met by the University.

Special concert marks opening of Cope Auditorium

The sound of timpani, percussion and strings heralded the opening of the new Cope Auditorium on 13 June, when sinfonia ViVA performed a specially devised concert to mark the launch of Loughborough's newest cultural facility.

The Cope Auditorium, formerly the Great Hall, has been named in honour of the renowned local family, whose generous funding through The Helen Jean Cope Trust helped to enable the



building's refurbishment. Located close to the School of Art and Design, the Auditorium will be a centre of learning and culture for both students and those in the local community, providing a venue for large group teaching, and evening and weekend cultural and arts events.

"The opening of this extremely impressive new facility underlines the importance of cultural activity within the University, and will, I hope, provide a much-needed space for local arts activities, meeting the requirements of both local community groups and the University. I look forward to the Cope Auditorium becoming known as a real 'meeting place' of the University and town for shared cultural activities," the Vice Chancellor commented at the opening.

The building's refurbishment was designed by Loughborough architects Allcock and Grieves, and provision has been made for

the display of a casket and scroll presented to Alan Moss – grandfather of Helen Jean Cope, and a director of William Moss & Sons, the local company that built the

original Great Hall – when he was made a Freeman of the then Borough of Loughborough.

A number of invited guests from the local area, including the trustees of the Cope Trust, joined members of the public and University staff and students for the inaugural performance. The concert, which was specially devised by sinfonia ViVA's principal conductor Nichola Kok, included *Serenade for Strings* by Elgar, Bach's *Suite No.2*, and *Chacony in G minor* by Purcell.

Peter Helps, chief executive of ViVA, said, "As the East Midlands' only professional orchestra, we were delighted to be performing at the opening of this important new local facility. We have an excellent following in the Loughborough area and strong links with the University, so it was extremely fitting that we performed this programme specially selected by Nicholas."

Union Exec celebrates successful year

The outgoing Students' Union Executive have ended their term with a flourishing finale, with the announcement that they have once again broken their own Rag record, raising a staggering £293,942.44 in 2001-02. Confirming Loughborough's status as the biggest and most successful Rag organisation in the UK, this latest fundraising achievement brings the total raised over the last eight years to almost £2m.

The money has been raised through events such as the annual bonfire and fireworks display and Rag week, as well as numerous street collections. National charities such as the Meningitis Research Foundation and Marie Curie Cancer Care have benefited from the students' hard work, with more than £27,000 also being donated across the Charnwood area, helping 45 local groups. Former Rag Chair Mandy Stace paid tribute to the many students who've helped to raise this amazing amount. "We're extremely proud of the achievements of our volunteers. They've given up so much time to make a difference both in the local and national communities."

The Athletic Union also had cause to celebrate, after winning the overall BUSA Championship 2001-02 – taking the women's title for the 24th consecutive year and the men's for the 22nd. Taking 42 individual BUSA titles – in sports as diverse as cycling, lacrosse, taekwon-do and waterpolo – and gaining more than twice as many points as their nearest competitor, Birmingham, Loughborough's dominance of student sport continues!

New community newsletter

The first edition of a newsletter produced specially for members of the local community has now been published. *University News*, a termly publication offering news and information about the University for Loughborough residents, is part of the University's strategy for improved engagement with the local community.

Each issue of the newsletter will be distributed to every household within the LE11 postcode area, and will also be made available in Loughborough's Town Hall. As well as news on the national cricket academy, the Ashby Road student accommodation and much more, the first edition also includes a reference guide to the campus-based facilities and services open to local residents. Future issues of the newsletter will also include a 'What's On at the University' listing. Issue two is now well underway and due for distribution mid September. If you have information or news for the local community, or would like your event to be listed in the events guide, please contact Hannah Baldwin in the Publicity Office, on ext 2239 or by email at H.E.Baldwin@lboro.ac.uk



The new Students' Union Executive took up their posts on 1 August. For 2002-03 they are:

President: Gina Jackson
Vice President (Finance and Commercial Services): Rich Myers
Vice President (Education and Welfare): Steve 'Geordie' Gibson
Vice President (Internal and Democracy Affairs): Tom Scott
Athletic Union President: Radha Balani
Rag Chair: Rich Cockshott
Community Action Chair: Clare Hewitson
Head of Student Media: Karlene Palmer
Publications Editor: Steven Todd

Revolutionary new device set to benefit patients and medics

The first-ever non-invasive device to measure the level of oxygen saturation in the veins has been developed by Loughborough researchers and cardiothoracic specialists at the University Hospitals of Leicester NHS Trust. Venox is already in clinical evaluation for cardiac surgery, and its unique patented technology has wide implications for clinical monitoring, health promotion and human performance assessment. The pioneering device has already earned the accolade of Best Medical Innovation at the prestigious Medical Futures Innovation Awards.

The supply of oxygen to tissues, via the arteries, is currently monitored by pulse oximeters, which are widely available in clinical settings. "To date, no commercially available equipment exists for monitoring oxygen saturation within the veins," says Professor Peter Smith, Head of Electrical and Electronic Engineering. "Venox aims to provide the missing link."

Venox is a low risk technology requiring minimal user skill and resources. It significantly reduces the need for a pulmonary artery catheter, which is traumatic for the patient, potentially dangerous and requires considerable skill and resources to apply. The prototype has been evaluated using laboratory protocols, and is now in clinical evaluation with a cardiothoracic surgical team at University Hospitals of Leicester NHS Trust.

Dr Mike Caine, Loughborough's programme director for sports technology, formulated the protocols used to evaluate Venox. "The Venox prototype extends the functionality of the pulse oximeter enabling simultaneous detection of an artificially induced venous pulse and natural arterial pulse for the very first time," he explains. "A pressure cuff at the base of the index finger produces the artificial, low-pressure venous pulse, allowing the higher pressure, natural arterial pulse, to remain unaffected. Current oximetry systems measure the supply of oxygen from the lungs but provide



The device in clinical evaluation.

little indication of how tissues utilise this. Venox has the potential to determine the uptake of oxygen by the cells and thus tissue health."

Venox will benefit patients and professionals involved in the management of pharmacological interventions, continuous monitoring of cardiovascular performance, anaesthesia, surgical recovery and management of therapy, diagnosis and monitoring of vascular disease and circulatory function. The technology will also prove beneficial in the monitoring of hypoxia, exercise, endurance training and stress tests, and in examining the effects of heat, cold and dehydration.

New centre launched

A new research centre – the Centre for Child and Family Research (CCFR) – was launched in June.

Established by Dr Harriet Ward and Professor Saul Becker, CCFR is based in the Department of Social Sciences and aims to maintain and develop programmes of research that will inform, influence and support policy and practice for children and families.

The formation of the Centre brings together a substantial body of research in this area, including the work of the internationally renowned Young Carers Research Group, and the 'Looking After Children' programme, which assesses outcomes in childcare. Among the current CCFR research projects are the recently launched scheme using therapeutic horticulture to promote social inclusion, health and well-being for vulnerable adults; a study on children caring for parents with

severe and enduring mental illness; a series of projects exploring outcomes for children in need; a project looking at the costs and consequences of different types of child care provision; and a study of babies in the care system.

Research carried out on these and other such issues at Loughborough has already informed social and health policy both at national and international levels, and has had a direct bearing on legislative change and professional practice in health and social care. The formation of the Centre will enable this work to go from strength to strength. "The new Centre will be a focus for internationally important research on vulnerable children and families," said Professor Saul Becker. "All our projects engage with some of the key questions of the day, and have direct relevance for informing policy and practice, and for improving the lives and well-being of the most vulnerable children and adults in society."

Research institutes join forces

The former Research Institute for Consumer Ergonomics (RICE) and HUSAT (the Human Sciences and Advanced Technology Research Institute) are now jointly known as the Ergonomics and Safety Research Institute (ESRI).

With over sixty members of staff, the Institute, which merged on 1 August, will provide one of the biggest sources of independent ergonomics and human factors expertise in the UK. The associated company ICE Ergonomics Ltd will also be renamed in due course, becoming Ergonomics and Safety Research Limited (ESRLtd) to echo this broader base.

"The merger of these centres into the Ergonomics and Safety Research Institute will allow access to a much wider range of experts across the broad spectrum of ergonomics and human factors," explains Magdalen Galley of the new Research Institute. "The expertise in ICT and advanced technology traditionally available from HUSAT will be complemented by the physical ergonomics, health and safety, and vehicle and road safety expertise that is the hallmark of RICE and ICE Ergonomics."

ESRI has three centres carrying out pure and applied research, consultancy, teaching and training in the discrete but overlapping areas of human focused design, transport technology ergonomics, and vehicle safety. The Institute will maintain its association with the wider base of ergonomists at the University through its inclusion in the Research School in Ergonomics and Human Factors. All staff in the Ergonomics and Safety Research Institute are now co-located in the Holywell Building.

Researchers work with Notts police to make roads safer

Crash experts from the University's Vehicle Safety Research Centre (VSRC) are working in partnership with Nottinghamshire Roads Police to improve the safety of motorists across Europe. The team of researchers is accompanying Officers to the scene of road traffic accidents in order to gather vital information beyond that which is routinely recorded.

The project – which is funded by the Department for Transport (DfT) and the Highways Agency, and will run until 2003 – has been set up in order to establish an in-depth database that will permit analyses to better understand the causes of crashes and injuries, and assist in the development of solutions.

Chief Inspector John Busuttill, senior officer at Nottinghamshire Roads Policing, said, "We're pleased to be participating in a project that will reduce fatalities and serious injury accidents on the roads of Nottinghamshire and Europe. Each year the emergency services are dealt the unenviable task of picking up the pieces following road traffic accidents, so we welcome any partnership work that will make our roads and vehicles safer."

Retrospective research has been carried out for a number of years, but cannot be used to obtain perishable (volatile) accident data such as trace marks on the road, pedestrian contact marks on vehicles, the final resting position of the vehicles involved, and weather, visibility and traffic conditions. Much information is lost during the clearing of the scene and it is only by prompt attendance at a crash that information can be reliably obtained.

Julian Hill, manager of the Loughborough project, said, "In-depth crash investigations are essential to understanding what happens in the real world. Thanks to the help of the roads

police in Nottinghamshire we are making great progress and will be able to undertake valuable work during the next couple of years."

When the research is complete, findings will be fed back to the Government and motor manufacturers in order to try and provide:

- protection for a wider range of vulnerable road users: the elderly, cyclists and motorcyclists
- protection by refining car-pedestrian impact velocity distributions
- safety of luggage and loads on cars and trucks, including injuries caused by occupant loading
- rollover initiation

Julian added, "It is expected that the results of the project will make a significant contribution to road safety, vehicle crashworthiness and occupant protection. The safety improvements which will undoubtedly arise from this work will be not only seen in the UK but in many other countries, thanks to the high quality research."

Nottinghamshire Chief Constable Steve Green, said, "The research project is most welcome. We are delighted to assist the University as its efforts will reap long-term rewards for road users in Nottinghamshire. A greater understanding of how collisions occur will make it easier to prevent them and make our roads safer."

Gatsby Innovation Fellowship Scheme helps to further technical innovation

The Gatsby Charitable Foundation has awarded a grant of £300,000 to fund technological innovation developing at Loughborough. Coupled with a contribution of a further £100,000 from the University, the funding has enabled a programme of Innovation Fellowships, originally launched in 1999, to continue for an additional three years.

The Gatsby Innovation Fellowship Scheme (GIFS) is aimed at academic and research staff interested in increasing their involvement in the exploitation of research, and is specifically designed to facilitate the release of University staff from other duties in order to concentrate on the development of new technologies.

Consultation with staff currently involved in the exploitation of research, and with those who have successfully taken technological developments to market, identified three requirements in this area – time to develop ideas to a sufficient stage to develop commercial viability; space for the activity, in particular the continued use of equipped laboratories where research has already been undertaken; and a trial period to evaluate the potential of the Intellectual Property. These concerns are addressed through GIFS, which provides release from other academic duties; special permission to use University facilities; access to specialist advice via the University's Intellectual Property Office; and a timeframe of generally between 12 and 18 months for a full fellowship, after which clear decisions for the future can be made.

Open to all academic and research staff

Professor Neil Halliwell, Pro Vice Chancellor for Research, notes, "This award will provide staff throughout the University with time to pursue technological interests. The Innovation Fellowships will present them with the support needed to bring the results of their research closer to the market place."

All members of academic and research staff of the University are eligible to apply for an Innovation Fellowship. Awards of up to £45,000 are made on a competitive basis, and fellows are selected through an assessment of the area of work proposed, and its potential to lead to successful commercial exploitation. The selection process pays particular attention to the commitment of the applicant, the innovative nature of work, the plans for further development and the market and commercial potential for the proposed technologies.

A Project Management Committee comprising representatives of the Gatsby Charitable Foundation, local entrepreneurs, members of the University and co-opted members oversees the Gatsby scheme.

For further information on the scheme, contact Val Barnard, Intellectual Property Office, on ext 8677.



New pool opens with a splash!

The wait is finally over, and the University's much talked about, Olympic sized swimming pool is now open!

Among the first to take to the water were the England swimming squad, prior to their departure for the Commonwealth Games, and if you fancy doing a few lengths too, the pool is now open to staff at specific times. For the most up-to-date timetable go to www.lboro.ac.uk/departments/ps/SDC/poolsummer.htm or contact the pool manager, Sam Pittham, on ext 6202. Swimming passes for staff cost £2.50 per session, £10 a month or £100 a year. Classes – including aqua aerobics, elite aqua, and swim circuit training – start in September.

So, for those who are interested, here's a potted history and a few 'fascinating facts' about the new pool!

- It was designed by FaulknerBrowns Architects – whose other recent projects include the Nottingham Ice Centre – and was built by Shepherd Construction, who are also building the new retail and leisure development in The Rushes in town
- Work started in February 2001, and was completed in 70 weeks
- The pool cost a total of £7 million, with £6 million being funded through the Lottery
- It has eight 2.5m wide lanes and is a maximum of 2m deep
- A movable boom allows the pool to be separated into two 25m-long areas



- The floor of one of the 25m areas is movable to enable the depth of the water to be varied
- It holds a staggering 2.5 million litres of water

And finally...

- The pool has almost certainly made Ian Armiger, the University's director of swimming, the happiest man in Loughborough!

PE, Sports Science and Recreation Management becomes School of Sport and Exercise Sciences

The Department of Physical Education, Sports Science and Recreation Management has been renamed the School of Sport and Exercise Sciences (SSES). The change has been made in order to better reflect the School's teaching and research, provide a more user-friendly name, and to reflect its international standing as a leader in its field. The School has also now moved into the newly built Sir John Beckwith Centre for Sport.

Loughborough has long been renowned for its high level teaching and research in sport and exercise sciences, and has played a major role in helping to define the nature of these disciplines and in establishing their academic, professional and sporting credibility. Professor Stuart Biddle, Head of the new School, said, "In the world of sport and leisure, Loughborough is proud of the part it has played in the past, secure in its present contribution, and very confident and enthusiastic about the future. The decision to change the name reflects the clarity and significance of our role today and our commitment to extending this even further."

The School plays a leading national and international role through its research and teaching groups in the areas of exercise physiology, pedagogy and physical education, physical activity and health,

sociology of sport, sport and exercise psychology, sport and leisure management, and sports biomechanics. Also part of the School are the Institute of Sport and Leisure



Policy, the Institute of Youth Sport and the British Heart Foundation National Centre for Physical Activity and Health.

Welcoming the announcement of the new School, which was formed on 1 August, the Vice Chancellor said, "The University is justifiably proud of what we have been able to achieve in the sport and exercise sciences. This success, which has been built on the efforts of outstanding staff, continues to be recognised by the companies and agencies who fund our research, by the employers of our graduates and by the parents and students who seek to take advantage of the unrivalled environment at Loughborough."

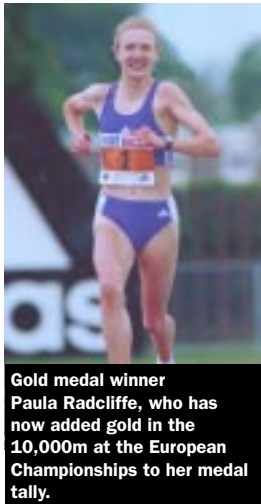
The School has also launched a new web site at www.lboro.ac.uk/departments/sSES on which details of staff room and extension numbers can be found.



Games bring inspirational student performances

This summer's Commonwealth Games were England's largest and most successful multi-sport event ever – and they also proved to be immensely successful for Loughborough! Sixty students, past and present, represented England, Scotland, Wales, Northern Ireland and Jamaica, bringing home a medal haul of seven golds, seven silver and three bronze; and nine Loughborough coaches and support staff worked for Team England.

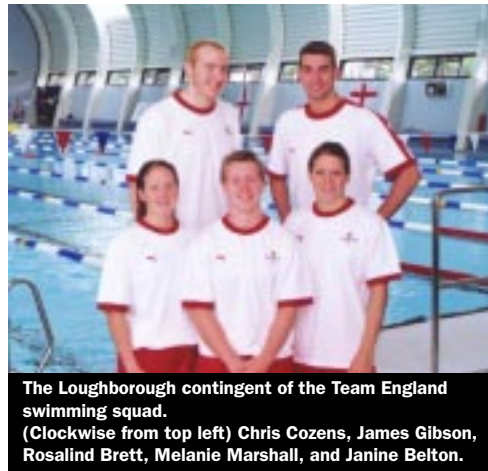
Management student Chris Rawlinson* became the only Team England athlete to win two golds on the track, winning the 400m Hurdles and running an impressive third leg of the 4 x 400m. Medal-winning athletics performances from past students included gold medals for Paula Radcliffe* in the 5,000m and Steve Backley in the Javelin, while silver medals went to Melanie Purkiss in the 4 x 400m, Hayley Tullet for Wales in the 1,500m, and Lee McConnell* for Scotland in the 400m. Former Loughborough College student Ben Challenger, who now trains at the University-based High Performance Centre, also won a bronze medal in the High Jump.



Ian Hebden

Gold medal winner Paula Radcliffe, who has now added gold in the 10,000m at the European Championships to her medal tally.

Contributing to the highly praised English swimming medal tally, James Gibson* – who is studying for a Masters in International Relations in the European Union – won bronze in the 100m Breaststroke and went on to take gold in the 50m Breaststroke, breaking the Commonwealth record in a time of 27.72s. Sports Science student Melanie Marshall and recent graduate Rosalind Brett* won silver in the women's 4 x 100m Freestyle. Past students Lucilla Wright and Jennie Bimson* helped England women's Hockey team through to a nail biting final against India, with the team winning the silver medal after a controversial sudden death goal by India in the final seconds of extra time.



The Loughborough contingent of the Team England swimming squad. (Clockwise from top left) Chris Cozens, James Gibson, Rosalind Brett, Melanie Marshall, and Janine Belton.

Other top results included Badminton team gold medals for former students Robert Blair and Donna Kellogg*, and bronze medals for graduates Lisa Knights* and Lisa Bartlett, who were both members of the England Waterpolo squad that competed before the main Games.

Director of Sport Rod Thorpe was thrilled with the students' performance, but also noted the boost that the medal haul will give to staff. "We're so pleased for the athletes, but we shouldn't forget this is obviously a fantastic reward for all the coaches and support staff who work so hard with the performers based at Loughborough. We should also acknowledge the support these talented athletes are given by their academic departments, to ensure they have an education and interests that broaden their opportunities."

* Denotes Loughborough Sports Scholar

Chesterfield FC and University sign partnership

On 22 July, Chesterfield FC and Loughborough University signed a groundbreaking agreement that is set to bring university footballers into the professional game. The deal will enable Chesterfield – a team hit hard by the ITV Digital funding shortfall – to secure a full reserve team for the next two seasons.

Loughborough will provide players to represent Chesterfield, initially in the reserves league, the Avon Insurance League, with provisions for negotiated transfer agreements, as well as non-contract fees in place for full

representation in the Nationwide Division Two 1st team side.

Chesterfield have been impressed by the Loughborough Students team that last season won the BUSA Championships and will represent England in the Student European Cup competition in September. Loughborough has a strong football set up with five coaches working with the squads and an advanced fitness training programme. The University has also introduced a widely praised education programme for footballers that allows released players from top clubs, who have good school-level qualifications, to return to education and pick up

degree level study. It is hoped that over time the partnership will provide opportunities for Chesterfield's youth players to further their education alongside their football.

Chesterfield FC manager Dave Rushbury said of the new partnership, "This unique link-up is probably a first in football and we are very excited about all the mutual benefits it will bring."

The Chesterfield Reserves team will play their home fixtures at Chesterfield's Saltergate ground. Darren Robinson, Loughborough's director of football, will manage the team jointly with Chesterfield's assistant manager.

Darren commented, "I hope the football community recognises this innovative move and understands the benefits of a potentially great partnership that can address some of the burning issues in football at the moment. Both parties have a lot to gain from this agreement. It will allow our young players, who work hard to keep up their education, to demonstrate their skills consistently to reserve team level, whilst preserving the benefit of higher education and developing the foundations for the players' longer-term future. Chesterfield will also benefit from a regular reserve team side and strong links with the Loughborough Sport set up."

Aeronautical and Automotive Engineering

Secondment of Dr A Spencer to CFD Research Corporation
Dr A Spencer
£16,934 Royal Academy of Engineering

TRENT 500 Combustor Acoustic Characteristics

Dr P Denman and Ms G Kroeff
£5,858 Rolls Royce

Business School

Security Risk Management Seminars
Prof G E Chivers
£16,405 ESRC

Civil and Building Engineering

E-HUBS
Prof C Anumba
£112,242 European Commission

Managing Value Delivery in Design

Prof S A Austin
£153,841 Sheppard Robson

A Future Scenario for Distributed Design:

Cross Section Learning between Construction and Aerospace
Prof A Thorpe
£62,820 EPSRC(IMRC)

Engineering Foresight Award

Dr J Wright
£24,096 Royal Academy of Engineering

Managing Value Delivery in Design

Prof S A Austin
£153,841 EPSRC(IMRC)

Respect for People Strategies for Improved

Construction Project Performance
Prof A Price, Dr A Dainty and Prof A D Bryman
£197,565 EPSRC(IMRC)

Patch Reinstatement Field Measurement

Dr P Fleming
£19,900 Advantica Technologies

Constructing Nottinghamshire: A skills Requirement Analysis

Dr A Dainty and Dr S Ison
£38,415 CITB

Knowledge Management for Sustainable

Construction Competitiveness
Prof C Anumba
£30,000 Caledonian University

Secondment of Pat Carrillo

Dr P Carrillo
£30,000 Royal Academy of Engineering

Simulating the Performance of Concrete

Structures using Virtual Prototyping Techniques

Dr A Dainty and Prof A D Price
£99,921 EPSRC(IMRC)

Computer Sciences

Teaching Company Programme with ESIT Ltd
Dr R Stone, Dr C J Hinde and Prof P Chung
£94,320 Teaching Company Directorate

Electronic and Electrical Engineering

Chiroptera-Inspired Robotic Cephaloid: (CIRCE)
Prof S R Jones
£191,577 European Commission

Kalman Filtering for Structural Coupling-Phase II

Prof R Goodall
£193,316 BAE Systems

Pulsed Power Research and Trials Support

Prof I R Smith
£277,230 DSTL

Additional Research Support for ARM Chair

Prof S R Jones
£29,747 ARM

Geography

North Derbyshire and North Nottinghamshire Sports Action Zone

Mr D Evans
£7,300 Derbyshire County Council/Jean Lee Associates

Human Sciences

Driver Fatigue Audits
Prof J Horne and Dr L Reyner
£40,000 DLTR

Information Science

MR Rights Metadata
Prof C Oppenheim
£60,000 JISC

Evidence Based Management in Action

Dr J E Davies and Mrs C Creaser
£44,985 Resource

Copyright and Licensing for Digital Preservation

Ms A Muir
£72,742 AHRB

Electronic Books: Children's Reading Practices and Comprehension

Prof C McKnight and Dr A Morris
£110,763 AHRB

Internet Safety Teaching

Dr J Wishart
£12,152 BECTA

IPTME

Microstructural Modelling of Cobalt-Based Superalloys for Gas Turbine Applications
Dr R C Thomson
£25,000 Innogy plc

ACORN-Nanoparticles for the Future

Prof J Binner
£441,928 EPSRC

Emission Control for Exhaust Gases

Prof J Binner
£6,529 Dytech Corporation

LUSAD

The Machinery of War, Industrial Detritus and the Human Condition
Mr J Atkin
£5,000 AHRB

LUSAD

High Temperature Wood Firing for Natural Ash Glazing, Exhibition and Symposium
Mr D Scott
£5,000 AHRB

Mechanical and Manufacturing Engineering

Modelling of Heat Transfer Effects on Pmd Valve Flow
Mr H K Versteeg
£6,000 Astra Zeneca

Advanced Modelling of Soccer Balls

Mr A R Harland and Prof R Jones
£104,424 EPSRC(IMRC)

Interconnection Technology for Flexible Printed Circuits

Mr P P Conway and Mr P J Palmer
£88,137 EPSRC(IMRC)

E-flex Maximising the Efficiency of Urban Home Delivery

Mr P J Palmer and Mr P P Conway
£238,219 EPSRC(IMRC)

Management of Technology and the Smaller Manufacturing Company

Dr K Walsh and Prof C J Backhouse
£204,693 EPSRC(IMRC)

School of Sport and Exercise Sciences

Project STIL Data Support

Prof S J H Biddle
£5,000 Masterfoods

Can Consuming Carbohydrate-electrolyte Beverages Project

Dr N Bishop
£71,675 GLAXOSMITHKLINE

Social Sciences

Applications of Anthropology

Dr S Pink
£10,923 ESRC

WEDC

UMI Uganda

Dr R Reed
£8,208 DFID

Water and Sanitation Access and Use by Physically Disabled People

Dr R Reed
£271,625 DFID

Sustainable Urban Drainage in Low Income Countries

Mr B Reed and Dr A P Cotton
£97,873 DFID

Capacity Development for Rural Water Sector Reform in India

Mrs S Coates
£48,827 IRC

Support to the Collaborative Council for Water Supply and Sanitation

Dr A Cotton
£15,158 Water Supply and Collaborative Council

Trio awarded Loughborough University Medal

At the degree congregation held on 16 July, David Ayres, who was a lecturer in the Department of Education and a warden of Elvyn Richards Hall, former head of Security Trevor Jones, and John Pearce, who has had a long involvement with the Alumni Association and is a member of the University Court were all presented with the Loughborough University Medal. The Medal was created in 2000 to mark service for and on behalf of the University, and allows the outstanding contributions made to University life to be acknowledged.

At the heart of Loughborough's halls of residence are the wardens – staff who provide pastoral leadership and much more to our students. During his fourteen years as Warden of Elvyn Richards Hall, from 1986 to 1999, **David Ayres** (below) gave exceptional service of stewardship in the largest hall on campus and influenced generations of students by his personal example. David's approach to the wardenship was characterised by his concern that



hall affairs should be managed correctly, and above all by his deep personal commitment to the students in his care. David felt passionately about his pastoral responsibilities; to him, and to his wife, students were their family. He was always available to his students and put an enormous

amount of time into helping anyone who had difficulties of any kind. A trusted and valued colleague, always ready to support and offer practical and effective advice to new wardens, David remains deeply respected and admired by his students and



was recognized as fair and always acting with the best interests of the student community at heart.

• • • • •

After a successful career in the Police Force, in which he reached the rank of Superintendent, **Trevor Jones** (above) distinguished himself greatly by developing the University's Chief Security Officer role in the wider community, outside of campus. He understood the need for the University to be pro-active, especially in those areas off-campus where increasing numbers of undergraduates are living amongst permanent

residents. By dealing swiftly and fairly with the kinds of problems that 12,000 students can cause in a town of fewer than 60,000 inhabitants, Trevor became the caring and listening ear of the

University within the community. Through all the challenges that have faced the University and the town in recent years, Trevor has been a trusted and highly valued channel of communication. He made a point of personal visits to follow up complaints, knew many long term residents personally, made it his business to be the human face of the institution which employed him, and willingly attended community meetings at any hour bringing to them his genuine concern and special warmth and friendship. In all these activities, Trevor – the most self-effacing of people, never seeking credit for himself – was completely professional



and trustworthy, representing the University fairly at all times.

• • • • •

On demob after piloting Lancaster Bombers during the war, **John Pearce** (above) studied Aeronautical Engineering at Loughborough College from 1947 to 1952. He was President of the College Union and was also branch chairman of the local student section of what later became the British Institute of Management. After many years of involvement, John became President of the Guild of past students, and on its dissolution on the creation of the Alumni Association, he presented on behalf of the Guild the first major endowment to Loughborough University Development Trust. John is also Chairman of the Past Students Association Charitable Trust, which has funded projects such as the wildlife garden and a number of statues on campus. He has been a member of Court for many years, representing the Guild and subsequently the Alumni Association.

Thanks for your support!

The Development Office and Alumni Association have held their third, and very successful, annual Midsummer Reception, to say thank you to the many alumni donors and supporters of the Loughborough University Development Trust.

Thanks to the generosity of the donors, the Trust is able to provide funds for a host of

worthwhile projects across campus. The Students' Union is one of the largest beneficiaries of the Trust funds, so it was fitting for this year's event to be held in the Students' Union. Over forty Development Trust supporters and local alumni attended. The Union proved an excellent venue and the event was splendidly hosted by the Union Executive, with a multimedia presentation of student life at Loughborough, a brief

overview of the year's successes, and a report of what the Trust grants have provided being given. The guests enjoyed meeting the Student Exec and capturing their enthusiasm for Loughborough, while the Exec were able to learn at first hand some of the history of the University from our alumni. The event was generously supported by Ede & Ravenscroft, printers W & G Baird Ltd, and the Students' Union.

Welcome

Loughborough University Innovations Ltd – which is based in Rutland Hall, and, with the Intellectual Property Office, manages and exploits the University's wealth of intellectual property – has welcomed an additional five members of staff.

Pollyanna Multon, who previously worked in the University's Intellectual Property (IP) Office as Assistant IP Officer, has been appointed as the Small Business Support Manager. She has co-ordinated the launch of the Loughborough Innovation Centre (see p3), and will work closely with many of the University's burgeoning spin out companies.

Loughborough graduate **Marina Pickles** has been appointed as the Student Enterprise Manager. Having formerly worked as the University's Copyright Advisor and as Assistant IP Officer, Marina has been involved in all aspects of IP including contracts, start-ups, project work and student advice.

After five years as a lecturer at East China University of Science and Technology, **Yuekun Zhao** – who has been appointed as Lachesis Fund Proposal Officer – moved to England in 1989 to study for her PhD in Chemistry at the University of Manchester. She worked as a postdoctoral research associate there before assuming the same position within the University of Oxford, and for the past two and a half years has been working at Loughborough as a postdoctoral research associate in the Department of Chemistry.

Penny McConnell has been appointed as Intellectual Property and Contracts Officer. She was previously employed as the University Solicitor at the University of Hull, and has also worked for both private practice and local authorities as a solicitor.

Having worked in a variety of managerial roles for National Westminster Bank from 1978, **Val Barnard** – who has been appointed as Intellectual Property Development Manager – moved to Loughborough University in 1999 to work as Operations Manager for the European Construction Institute (ECI). Her most recent position was with the National Westminster Bank in the area of support management.

Irene goes 'States-side'

Some people like a leisurely jog round the park; others prefer their running to be more competitive; but some, like Computer Science's Irene O'Malley, do it for the money, raising hundreds of pounds for worthy causes.

This autumn, Irene will be crossing the pond to run the New York Marathon and raise lots of much-needed money for the local Rainbows Children's Hospice in the process. "Rainbows cares for children with life-limiting illnesses, and also offers support to the whole family," Irene explains. "It needs to raise £1.2m every year, through fund raising activities and contributions, to continue caring for children and their families in our local community. By taking part in the marathon I can make a contribution – and see a wonderful city at the same time!"

If you wish to sponsor her in the Marathon, or make a donation to the Hospice, Irene can be contacted on ext 2681, or by email at I.P.A.Omalley@lboro.ac.uk

The fund raising ball is already rolling, with some of Irene's colleagues and two University suppliers offering to support her. "I'd like to take this opportunity to thank those colleagues who've already sponsored me and, to also thank the Danwood Group for their donation of £200 to the Hospice, and Whittaker's Office Supplies for their kind support."

Danwood is now the University's sole supplier of copiers and printers. It has been a supplier to the University for more than five years and also asked some of the University's Computer Science students to help to devise the company's web site during its early stages of development.

This year's New York Marathon takes place on 3 November.



Courtesy of Irene O'Malley

(L-R) Irene O'Malley being presented with a cheque for £200 by Ed Milner from the Danwood Group and Chemistry's Sandra Evans, who ran the New York Marathon in 2001.

Equal pay audit

As you may already be aware, the University is currently conducting an equal pay audit, in line with its Human Resource Strategy to the Higher Education Funding Council for England (HEFCE). The University is also legally obliged to ensure equality in pay as set out in the Equal Pay Act 1970 and other anti-discriminatory legislation.

The purpose of an equal pay audit is to ensure that the University is not unfairly discriminating against certain staff – for example women, ethnic minorities, or people with a disability – regardless of their length of service, part-time or full-time status, or contract status. As well as reviewing salaries and wages, the audit also assesses other benefits, such as holidays and bonuses. The audit is a major

undertaking for the University and is being conducted by a Personnel Services working party, comprising personnel advisers Mary Thomas and Joanne Arno, equal opportunities assistant Bharti Sharma, and equal opportunities officer Kashmir Bolla.

"We have begun a pilot study looking at the average salaries of academic staff of all grades according to their gender, ethnic minority and those with a disability. The reasons for any possible differences will then be investigated," explains Kashmir. "The working party recognises it's working with highly confidential information and will deal with this work in a sensitive and appropriate manner."

If anyone has any queries about the audit, they should contact Kashmir Bolla on ext 8026 or by email at K.K.Bolla@lboro.ac.uk

Obituaries

Gwenda Scott

The news of Gwenda Scott's sudden death on the morning of Thursday 27 June, following a recent diagnosis of cancer, was received with great shock and sadness by her colleagues and friends within Computing Services, at the University and far beyond.

Gwenda had been the Computing Services Finance Clerk since January 1999 and maintained an important and valuable role within the Department. She was a skilled administrator renowned for her accuracy, efficiency and persistence, as many Computing Services debtors will be only too familiar! Gwenda worked in the former Computer Centre, from 1969 until 1996, as Data Preparation Supervisor during which time many of her friendships were formed.

An immensely popular and approachable lady, clearly demonstrated by the huge attendance at her funeral, Gwenda will always be remembered for her laughter and friendship and will be sadly missed by all who knew her.

Our thoughts and deepest condolences are extended to our colleague Bruce, the family and friends.

The Department and University managed to collect together £457 for the chosen charity, Cancer Research UK. Many thanks to all those who contributed.

Computing Services

Stephen Tipper

Stephen Tipper graduated with a BEng(DIS) in Mechanical Engineering in 2000. Staff and graduates who knew Stephen will remember him as one of those students who had a wonderful appetite for whatever he was doing. On leaving Loughborough, he took a graduate position with British Aerospace Systems in Lancashire where he had already completed a particularly successful sandwich placement. Earlier this year, BAe gave Stephen leave to spend time travelling with friends through Asia and to Australia, and it was during his stay in Australia that he died suddenly of a brain haemorrhage. I knew Stephen very well and endorse the words of the Rev Peter Hudson, Vicar of St Mary's Church in Mellor,

Lancashire, who conducted the funeral service: "Stephen was a fine young man and a credit to his parents. He will be greatly missed."



Dr Steve Rothberg

Dear Editor . . .

I would just like to say thank you to all those at the University who made donations to Cancer Research UK in memory of my wife Gwenda. The £457 raised by University staff, together with the many other donations, will help to fund further research into this terrible disease. Thank you also to colleagues and friends at the University for their support and help to me over the last couple of months.

Bruce Scott
Computing Services

Climbing, canoeing and community work

Hayley takes part in the Prince's Trust Scheme

Residential Organisation's Hayley Bilby is riding high, after completing a twelve-week programme as part of the Prince's Trusts scheme. Between May and August, Hayley – who is a Deli Assistant in the Food Box Supermarket – took part in a range of team-building and skills development exercises and community projects as part of the Trust's 'Volunteers' programme.

Founded in 1976 by The Prince of Wales to help young people fulfil their potential, the Trust has become the UK's leading youth charity, offering a range of opportunities including training, personal development, business start up support, mentoring and advice. 'Volunteers' is one of the Trusts' most popular programmes, through which 16 to 25 year olds can take part in challenging projects, develop job skills, build motivation and confidence, and make a real difference to their local community.

During her time on the scheme, Hayley went rock climbing and canoeing, and spent a week working at the Skylarks Winged Fellowship Centre in Nottingham. The group also had to select a community project to undertake, and raise the necessary funds to complete it. Hayley's team decided to create a garden for the Humphrey Perkins Youth Centre from a piece of wasteland, and raised money for the project by doing a sponsored bike ride to Skegness and a sponsored bag-pack at Safeways. The tools needed for the job were lent to the group by the University's Estates Services. The programme culminated on 2 August with the group giving a presentation on their activities and experiences.

"It was wonderful to see the video clips and hear the group's stories about the course," said the Residential Organisation's Ellie Casey, who attended the presentation. "They obviously had great fun rock climbing and canoeing, even though they all seem to have capsized! What really came across very strongly though was how much they had all come together as a team."

If anyone else would like to get involved in the Prince's Trust 'Volunteer' scheme, then go to www.princes-trust.org.uk or contact Brian Hutchinson, on 01283 791075. The next project being run in Loughborough starts on 23 September.



Hayley (centre) with her team mates.

Courtesy of the Residential Organisation

Unsecured personal loans for readers of news@lboro

One number any amount.

The same loan rate no matter how much you borrow.

8.7% APR

- on any amount from £1,000 to £15,000
- no arrangement fee or security required
- with insurance available
- money straight into your account*
- repayments by standing order

Phone free on 0800 591 682
Quote reference: 791/1021

Written quotations available on request. Rates correct as at 03/04/03. Loans subject to status and not available to non-UK residents, anyone under 21 or over 69 years of age. An example of a loan taken out at our rate of **8.7% APR** for £5,000 over 3 years, will be repayable by 36 monthly instalments of £180.98 with Repayment Protection, and a total repayable of £6,606.00. The Co-operative Bank p.l.c. reserve the right to decline any loan application, but may, in certain circumstances and at its discretion, offer a loan at an alternative rate to those advertised. The Bank may monitor and/or record telephone calls between you and the Bank for security and/or training purposes.

*Once we have your signed agreement form, same day transfer is via CHAPS, before 3pm, at a cost of £20.

Registered Office: The Co-operative Bank p.l.c., 1 Balloon Street, Manchester M60 4EP Registered Number 10967 Website: www.co-operativebank.co.uk

Minibus and Van Hire



Did you know that Estates Services provide a low cost Minibus and Van hire service? This service is available to any University Staff member for University business.

For prices and booking information please contact the Estates Services Helpline on 0145 221101 or email us at li-estateshelp@lboro.ac.uk

Miscellaneous sales

Boy's **Mountain Bike**, Y frame, suit age 7-10, excellent condition – £60 ono; email A.Matthews@lboro.ac.uk or Tel 560281 after 4pm.

DVD Player, Toshiba, black, 1 yr old, £190 new – £80 ono; email jsmith@hind-leys.leics.sch.uk or Tel 07776 253187 or 263998.

Two **Air tickets** from East Midlands to Dublin, dates are: outward 30/8/02 (7.00am), return 5/9/02 (6.30pm), valid until April 2003 if travel date changed, were £110 each – £65 each; Mrs G Brown, email G.L.Brown@lboro.ac.uk or Tel 820880.

Set of **Kingfisher Children's Encyclopaedias**, suitable for Primary age children – £10; Val, ext 2190.

CPU: Pentium MMX 233 MHz, 64MB Ram, 5GB HD, graphic adaptor, sound blaster card, internet ready (56k internal modem), CD ROM, 15" monitor, Windows 98, Office 2000 – £250 neg; email Y.Liang@lboro.ac.uk

Miscellaneous services

Cakes for any special occasion, birthday, anniversary, wedding, retirement, any cake, any size; Cathy Cakes, Tel 230271.

Miscellaneous wants

Washing machine wanted; email R.Morana@lboro.ac.uk

Vehicles for sale

Volkswagen Bora 1.6 SE, 2 years old, 13,600 miles, lady owner – £10,500 ono; email A.L.Brown@lboro.ac.uk or Tel 222024.

Vauxhall Astra, G reg, white, 86k miles, 12mths MOT, full service history, includes overhead detachable luggage/ski racks, one previous careful owner, never had any problems, quick sale needed as leaving England – £480; Donald, email barnhart@wolfram.com or Tel 238241.

Accommodation for sale/rent

Loughborough, 2 bedroom house to let in quiet area near University, modern, well furnished, CH, off road parking – £425 pcm; Tel 210037.

Loughborough, 1 bedroom house, modern purpose-built, well furnished, CH, quiet area near University, off road parking – £345 pcm; Tel 210037.

Bunny, 3 bed detached house in sought after village location, lounge, dining room, fully fitted kitchen, ch, large private garden, garage, alarm – £175,000; email D.E.Pitfield@lboro.ac.uk or ext 3416 or 0115 921 4305.

MORE TH>N HOME INSURANCE

SAVE ON AVERAGE

£60

ON YOUR HOME INSURANCE

AND THAT'S JUST THE START

New customers save an average of £60 when switching to MORE TH>N Home Insurance.

But that's just the start. You're also entitled to **20% discount on your MORE TH>N Home Insurance** just for being an employee of Loughborough University.

For your quote and more details on your special MORE TH>N Home Insurance discount

Call **0800 300 822**

quoting **34M0351**

For the latest MORE TH>N discounts on your next Travel and Car Insurance policy, call now and quote SCH314 for Car and 34M0351 for Travel Insurance discounts.

MORE TH>N™

FROM ROYAL & SUNALLIANCE

Honorary degrees

At this year's summer degree congregations, honorary degrees were conferred upon the following distinguished persons in recognition of the outstanding contributions they have made to industry, academia, business, sport, the arts and society.



H.E. Dr Mohammed J K Alghatam

Minister for Education, Kingdom of Bahrain; and graduate of the University

Honorary Doctor of Science (Hon DSc), in recognition of his contribution to education.

Sir Anthony Bamford, DL

Chairman and Managing Director, J. C. Bamford Excavators Limited

Honorary Doctor of Technology (Hon DTech), in recognition of his contribution to engineering and business.



Robert Dickins, CBE

Chairman, Instant Karma; Chairman of the BPI (British Phonographic Industry); and graduate of the University

Honorary Doctor of Letters (Hon DLitt), in recognition of his influence on popular music and his contribution to the British record industry.



Professor Clive W J Granger

Professor of Economics, University of California, San Diego

Honorary Doctor of Science (Hon DSc), in recognition of his contribution to economics and statistics.

Julien E L Harvatt, BA

Former Headmistress, Loughborough High School; and former member of University Council

Honorary Doctor of Letters (Hon DLitt), for her contribution to education in Loughborough.



Professor Sir Gordon Higginson, DL, FREng

Former Vice Chancellor and Emeritus Professor, University of Southampton

Honorary Doctor of Science (Hon DSc), for his contribution to education and engineering.



Bridget Towle, CBE

Chief Guide of the Guide Association UK; Chief Commissioner of Girl Guiding in the Commonwealth; and former joint Managing Director, Towles plc of Loughborough

Honorary Doctor of Letters (Hon DLitt), in recognition of her services to Guiding, and her contribution to Loughborough and Leicestershire.

1. Sir Anthony Bamford
2. Professor Clive Granger
3. H.E. Dr Mohammed Alghatam
4. Professor Sir Gordon Higginson
5. Robert Dickins
6. Bridget Towle
7. Julien Harvatt