

Loughborough University Prevent Policy

Document Version Control

Version	1.4
Creation Date	14/10/15
Owner	Manuel Alonso, Director of Student Services

Change History

Change Date	Changed by	Changes
18/08/15	Manuel Alonso	<p>Revision to terms used in policy to reflect comments from Council meeting on 2 July, most notably references to terrorism only throughout.</p> <p>Changes to reflect feedback from regional Prevent Co-ordinator, in particular:</p> <ul style="list-style-type: none">• Changes to Section 1 to make it clear that the University has adopted a risk-based approach to discharging its duties.• Changes to indicate that a range of training might be provided to staff.• Insertion of section 5.7.• Insertion of section 5.8.• Changes to 5.9 to correct the title of the Prevent Steering Group.• Changes to 7.2 to make the distinction between the Police and Channel clear.
14/10/15	Manuel Alonso	<ul style="list-style-type: none">• Added link to Code of Practice on External Speakers.
04/01/16	Manuel Alonso	<ul style="list-style-type: none">• Insertion of paragraph 5.11 to clarify governance arrangements.• Typographical amendments to 5.9.
23/03/16	Manuel Alonso	<ul style="list-style-type: none">• Amendment of 'ultimate' to 'operational' in paragraph 5.10 following comments from Council on 18 March 2016.

1 Introduction and Context

- 1.1 Loughborough University is committed both to protecting freedom of speech and academic freedom and to protecting and safeguarding its students from the risk of being drawn into terrorism.
- 1.2 This policy outlines Loughborough University's commitment to preventing students from being drawn into terrorism. In doing so we recognise that terrorism can be associated with a range of ideologies. A definition of terrorism is provided in Section 3 below.
- 1.3 This policy is written with reference to the [Counter-Terrorism and Security Act 2015](#). The Act places a duty on Universities to have 'due regard to the need to prevent people from being drawn into terrorism.' The Act also notes that Universities must seek to balance this duty with their commitment to freedom of speech and the importance of academic freedom.
- 1.4 Loughborough University has taken a risk-based approach in discharging its duties under the Counter-Terrorism and Security Act 2015.

2 Scope of this Policy

- 2.1 This policy applies to all staff and students at Loughborough University.

3 Definition of Terrorism

- 3.1 For the purposes of this policy, terrorism is defined as the use or threatened use of violence for the purpose of advancing a political, religious, racial or ideological cause.

4 Principles

- 4.1 Loughborough University is committed to fostering an inclusive environment in which the principles of academic freedom and of freedom of speech underpin our educational institution.
- 4.2 Loughborough University is committed to ensuring vulnerable individuals are safeguarded from being drawn into terrorism as defined in 3.1 above.
- 4.3 Loughborough University will seek to identify, protect and support individuals who it believes may be at risk of being drawn into terrorism.
- 4.4 Loughborough University discharges this responsibility in partnership with other agencies, including the Police, Local Authorities and the network of regional Prevent Co-ordinators.
- 4.5 This policy describes Loughborough University's contribution to this multi-agency Prevent agenda. It also defines Loughborough University's process for referral into the local Channel processes. The Channel programme has been developed as part of the Prevent Strategy to provide support to people at risk of being drawn into terrorism.

5 Institutional Duties

- 5.1 Loughborough University will undertake a risk assessment to identify the potential risks associated with students being drawn into terrorism.
- 5.2 On the basis of this risk assessment Loughborough University will identify any actions which need to be taken to mitigate these risks and develop an appropriate action plan.
- 5.3 Loughborough University will ensure that relevant staff members are provided with appropriate training as outlined in the [Counter-Terrorism and Security Act Statutory](#) Guidance.
- 5.4 Loughborough University will ensure that staff and students are made aware of the process for referring concerns regarding students (see [Section 6](#) below).
- 5.5 Loughborough University will provide appropriately resourced spiritual and Chaplaincy support for students. This will include multi-faith chaplaincy provision and prayer/ quiet reflection space. Loughborough University will also liaise with local faith groups and Loughborough Council of Faiths to ensure integration with the local community.
- 5.6 Loughborough University will work closely with Loughborough Students' Union to ensure that the policies the University develops in this area are supported, where appropriate, by the Students' Union.
- 5.7 Loughborough University will ensure that its [IT Acceptable Use Policy](#) has due regard to the duties specified in the [Counter-Terrorism and Security Act Statutory](#) Guidance.
- 5.8 Loughborough University will ensure its has an appropriate [Code of Practice for External Speakers](#) which is regularly reviewed.
- 5.9 Loughborough University will nominate a 'Prevent Lead' whose duties will include:
 - attending the Leicester, Leicestershire and Rutland Prevent Steering Committee meetings to update on the Prevent agenda;
 - ensuring relevant updates on the Prevent agenda and on threat levels are communicated to the appropriate University staff;
 - ensuring relevant staff are provided with appropriate training;
 - ensuring the Chief Operating Officer and Vice Chancellor are fully apprised of the most current Prevent developments.
- 5.10 Operational responsibility for oversight of the University's Prevent duties rests with the Chief Operating Officer.
- 5.11 University Council will:
 - act as the governing body for the Prevent Agenda;
 - ensure the University's arrangements in respect of Prevent are reviewed;
 - provide oversight of the University's annual submission to HEFCE as part of the Prevent Monitoring Framework.

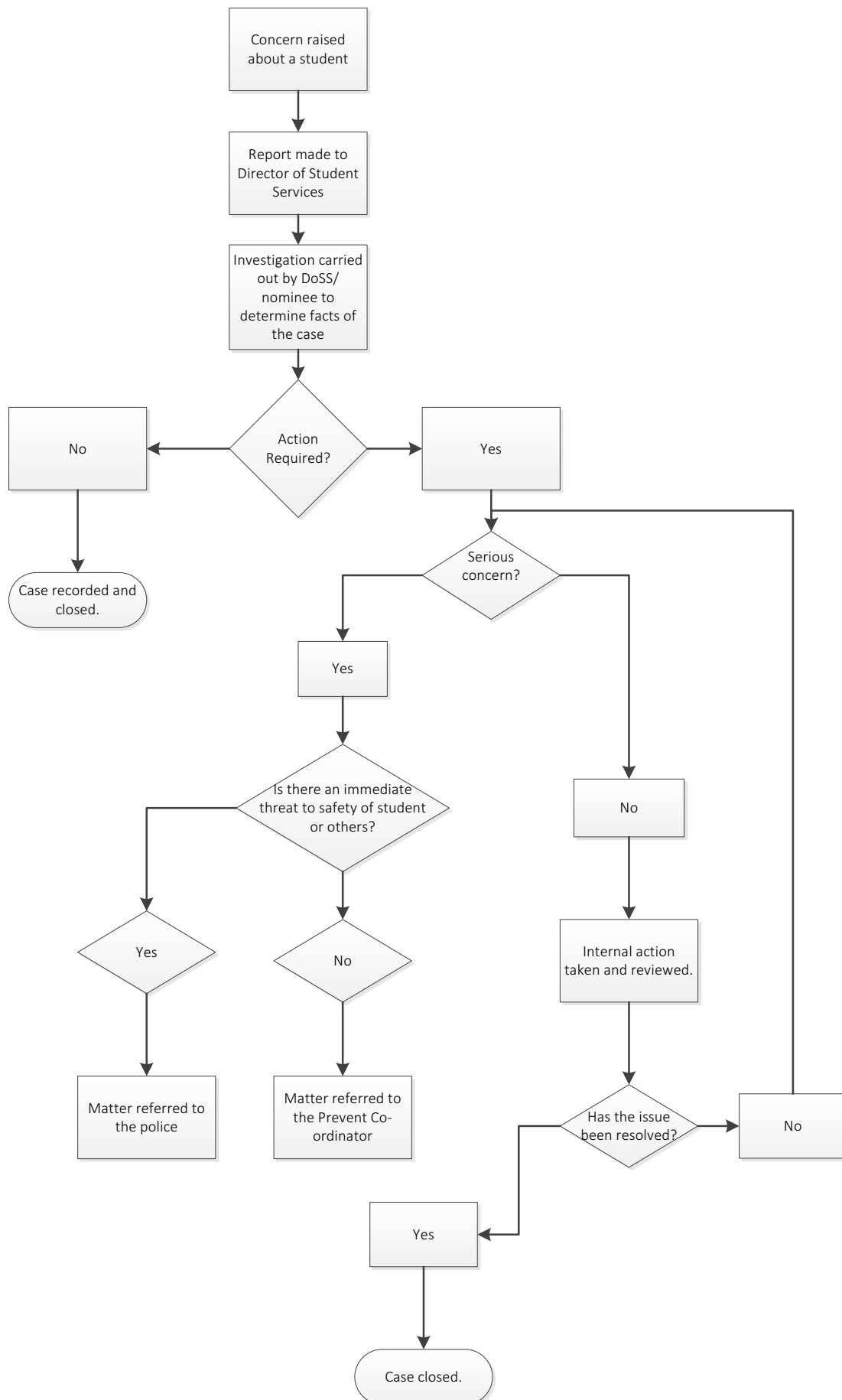
6 Referral of Concerns Regarding Radicalisation

- 6.1 Any member of the University (student or staff member) may identify concerns about a student potentially being drawn into violent extremism based on information received or behaviour observed.
- 6.2 It is important that such concerns can be shared in a safe and supportive fashion to enable concerns to be investigated and an appropriate intervention to be developed, if required.
- 6.3 It is equally important that assumptions are not made on the basis of information received and that referrals are investigated thoroughly and fairly. Loughborough University will seek to approach such concerns from the perspective of safeguarding the individual about whom concerns have been expressed.
- 6.4 Only where there is clear and compelling evidence of a requirement to do so will information be shared with other agencies. See [Section 7](#) below for further detail.
- 6.5 A flowchart for the process of reporting concerns is included in Appendix A and is detailed in 6.6 to 6.9 below.
- 6.6 Where a student or staff member has concerns that a student is expressing violent extremist views or is at risk of being drawn into violent extremism, these concerns should be passed to the Director of Student Services.
- 6.7 The Director of Student Services or his/her nominee will investigate the matter, seeking to gather together the substantive information and evidence which would allow a full consideration of the case.
- 6.8 Once any available information and substantive evidence has been gathered, this will be considered by the Director of Student Services, in discussion with other members of University staff where relevant.
- 6.9 A decision will be made as to the seriousness of the case. Three potential outcomes are likely at this stage:
 - *No further action is required.* In this case a confidential record of the case will be kept by the Director of Student Services and the Chief Operating Officer would be notified that a case had been investigated but no further action is required.
 - *There is substance to the case but at this stage only internal action is required.* The exact nature of the intervention required would be determined by discussion between relevant staff members. Actions and a review date will be agreed. At the review the case would be assessed again and the appropriate actions taken (as per 6.6 to 6.8 above). It is anticipated that in the majority of cases the intervention would be supportive and safeguarding in nature. As above, the Chief Operating Officer will be fully briefed.
 - *A referral to the police is required because there are serious and immediate issues of safety to the student or others, and/or there is evidence to suggest a criminal act may be committed or has been committed.* This decision would be taken only in the most serious of circumstances and only by the Chief Operating Officer.

7 Information Sharing

- 7.1 In reaching a decision to share any information with third parties Loughborough University will adhere to its [Data Protection Policy](#) and the Data Protection principles contained therein.
- 7.2 In following the referral process outlined in Appendix A there may be instances where Loughborough University is sufficiently concerned by a student's behaviour and the risk they potentially pose that it will need to share these concerns with external agencies. This may include referral to the Channel Programme, or, in serious circumstances, the Police.
- 7.3 In sharing such information with external parties Loughborough University will share only sufficient and relevant information in order to allow the concern to be appropriately followed up.
- 7.4 Loughborough University will keep confidential records of the information shared. These will be kept in accordance with the Data Protection Act (1998).

Appendix A: Process for Reporting Concerns Regarding Radicalisation



Appendix A: Process for Reporting Concerns Regarding Radicalisation