

# Windows 10 1809 Upgrade

## Contents

Introduction .....	1
Are you ready for the upgrade?.....	1
Running the Upgrade .....	2

## Introduction

Unlike previous Operating Systems such as Windows 7, Windows 10 is not static. Microsoft is continually working on improving upgrading by fixing bugs, releasing security Improvements, and adding enhanced features.

The current version installed on you PC 1703 and goes out of support on 8<sup>th</sup> October 2019 and as such needs to be upgraded in order to be secure.

If you PC is not upgraded by the **16/08/2019** then a mandatory upgrade will be sent to your PC to make sure it is secure.

## Are you ready for the upgrade?

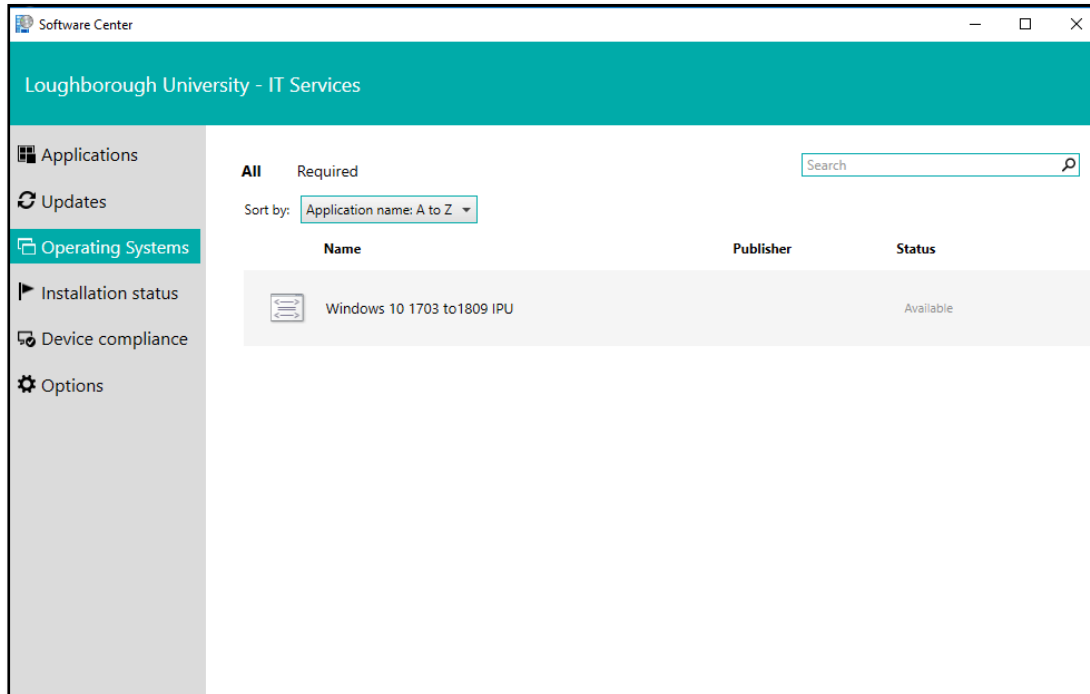
We have created a simple process to upgrade your PC which should take just over and hour. Before running the upgrade, we ask that you check the following...

- Run the Upgrade over the wired Network. It should work on the wireless network, but this is not recommended.
- Do not run the upgrade via a docking station.
- If you have a Dell Laptop with no internal network port, only use the Dell network dongles.
- Only run the upgrade on Campus
- What new features are in this upgrade?
- Don't work on the PC\Laptop whilst the upgrade is running
- Run the upgrade in the evening like the w7-w10 in-place upgrade as this will reduce disruption to your work.

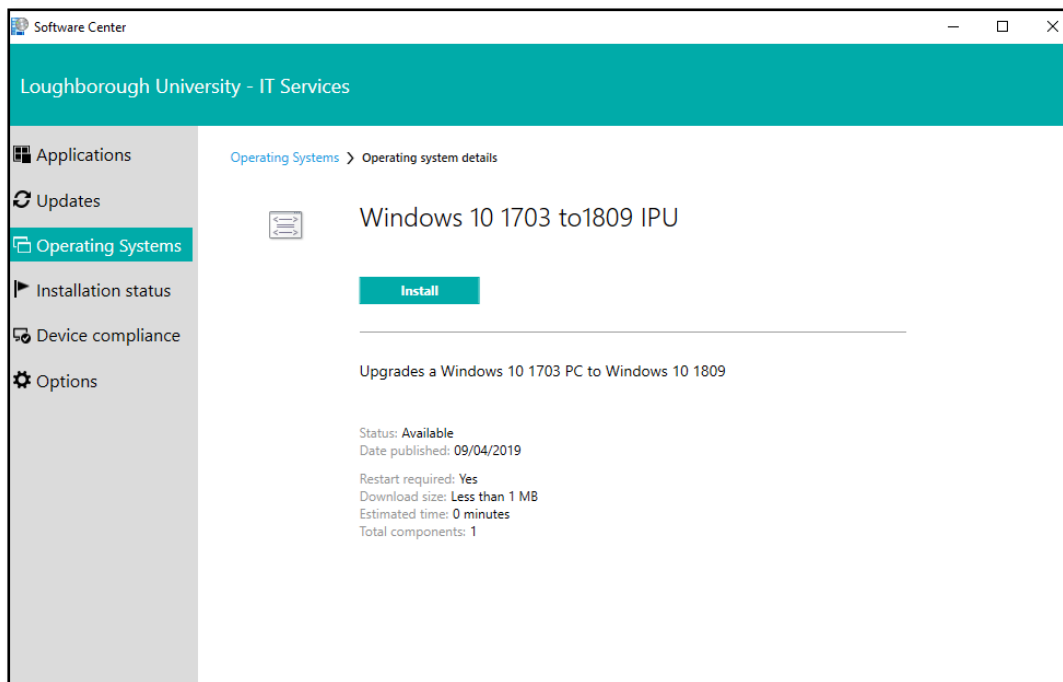
## Running the Upgrade

Once connected the wired network, carry the process below

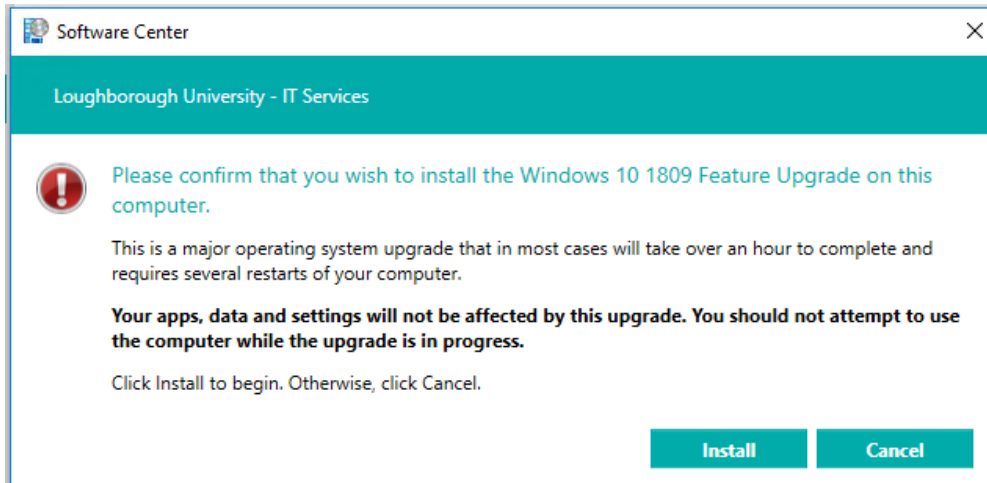
1. Launch the **Software Centre** and click on **Operating Systems** tab.



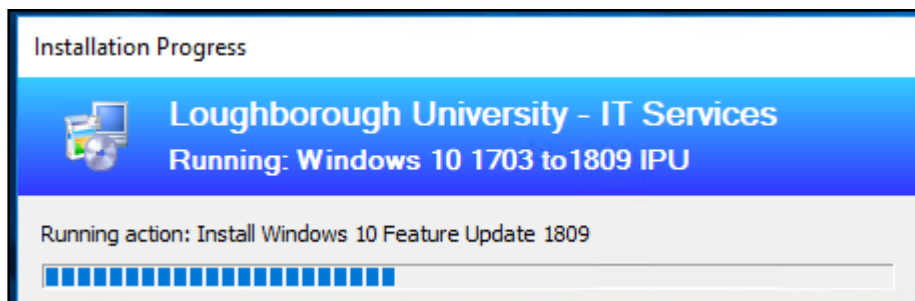
2. Double click on **Windows 10 1703 to 1809 IPU**



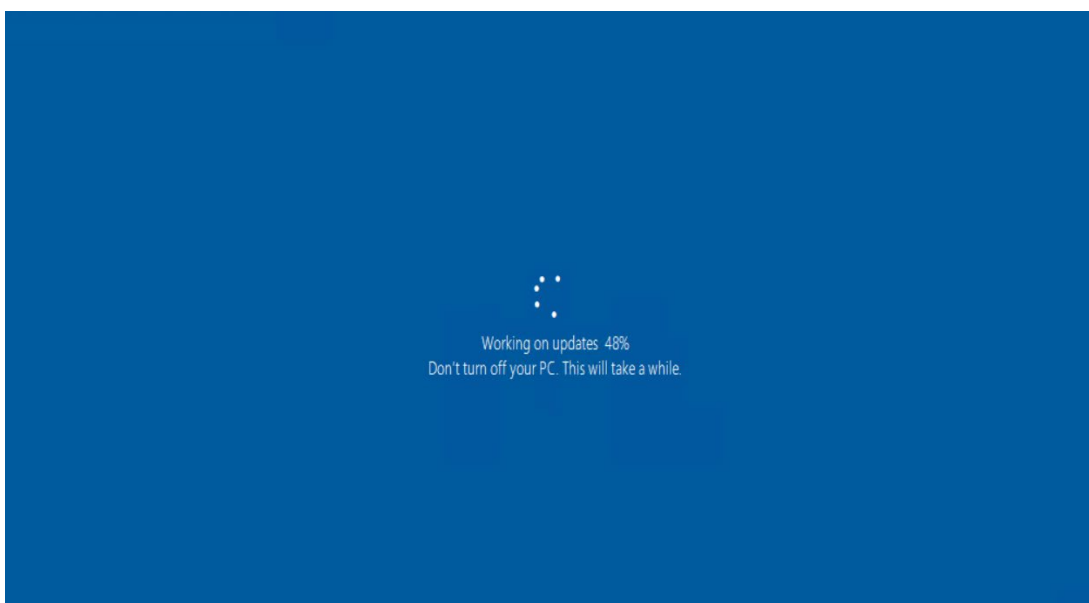
3. Click on **Install**



4. Click on **Install**



5. The upgrade will now begin to install. If you are installing in the evening, then please lock the screen.
6. The Upgrade will reboot and begin to install and configure.



7. Once the PC has rebooted, you may see some additional configuration screens. Once complete, you can start to work as normal.

These updates help protect you in an  
online world