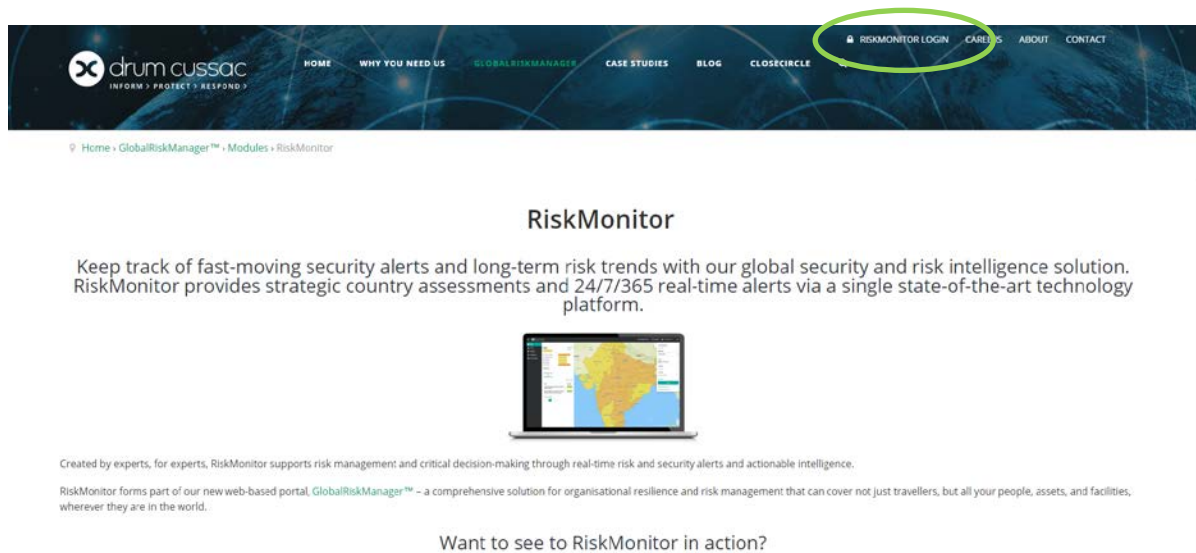


To set up the alerts and App for your placement abroad

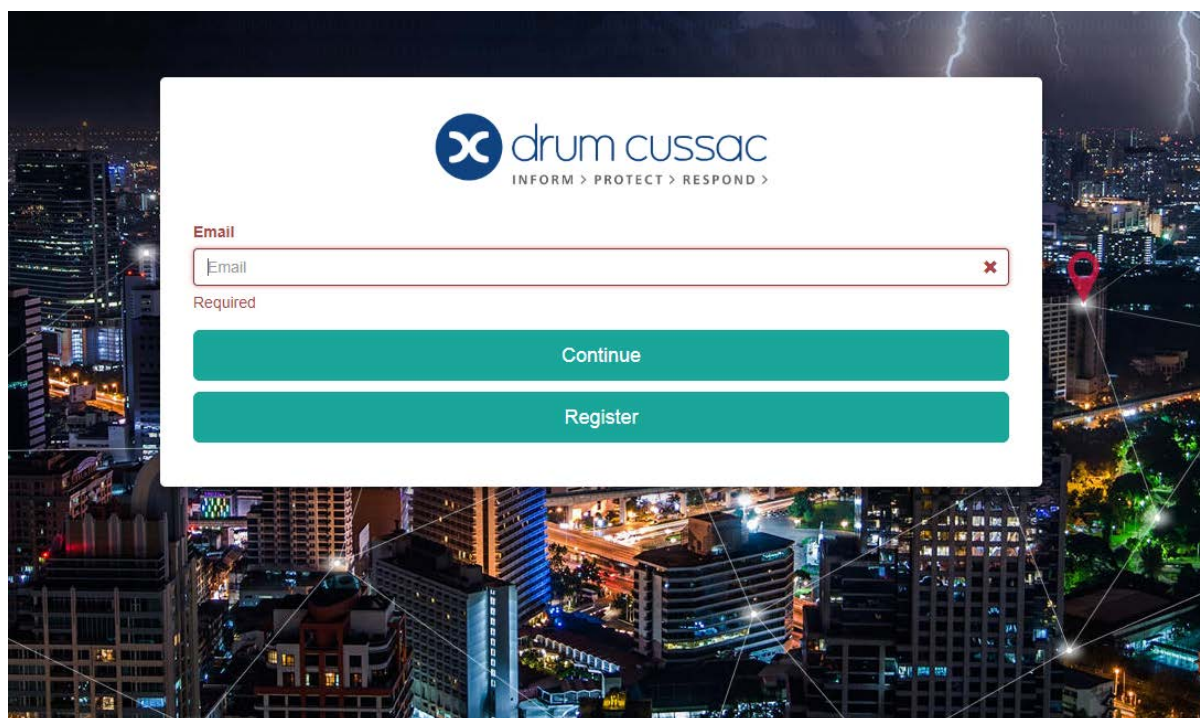
Go to this address: <https://www.drum-cussac.net/self-registration>

create an account using your university email address and creating a password to do this click the risk monitor login at the top of the page



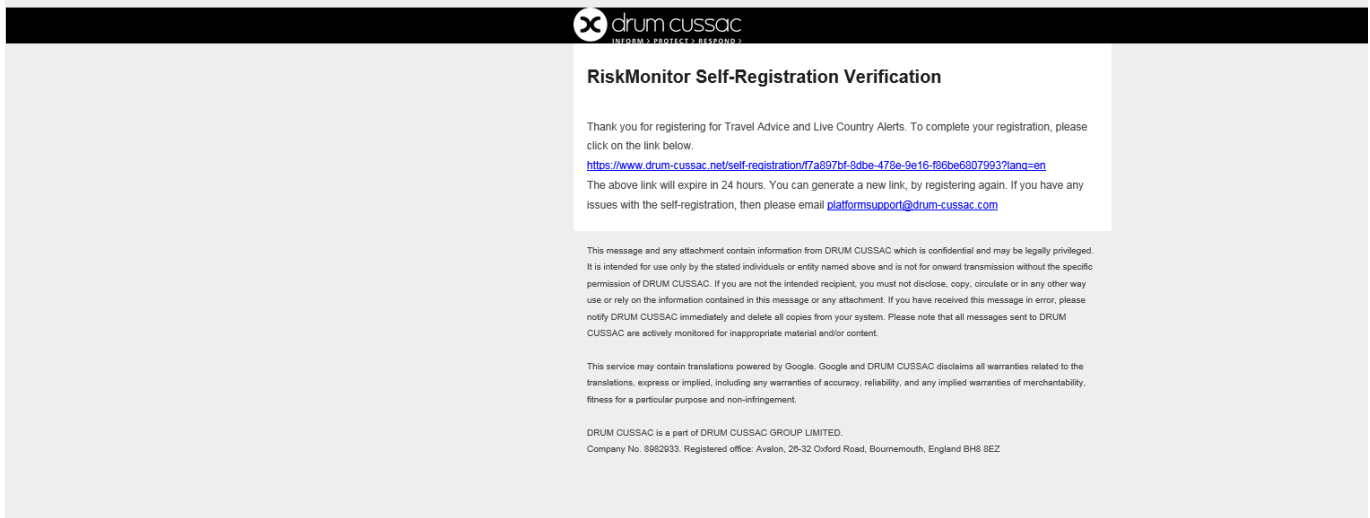
t

Then type here your university email address and click register

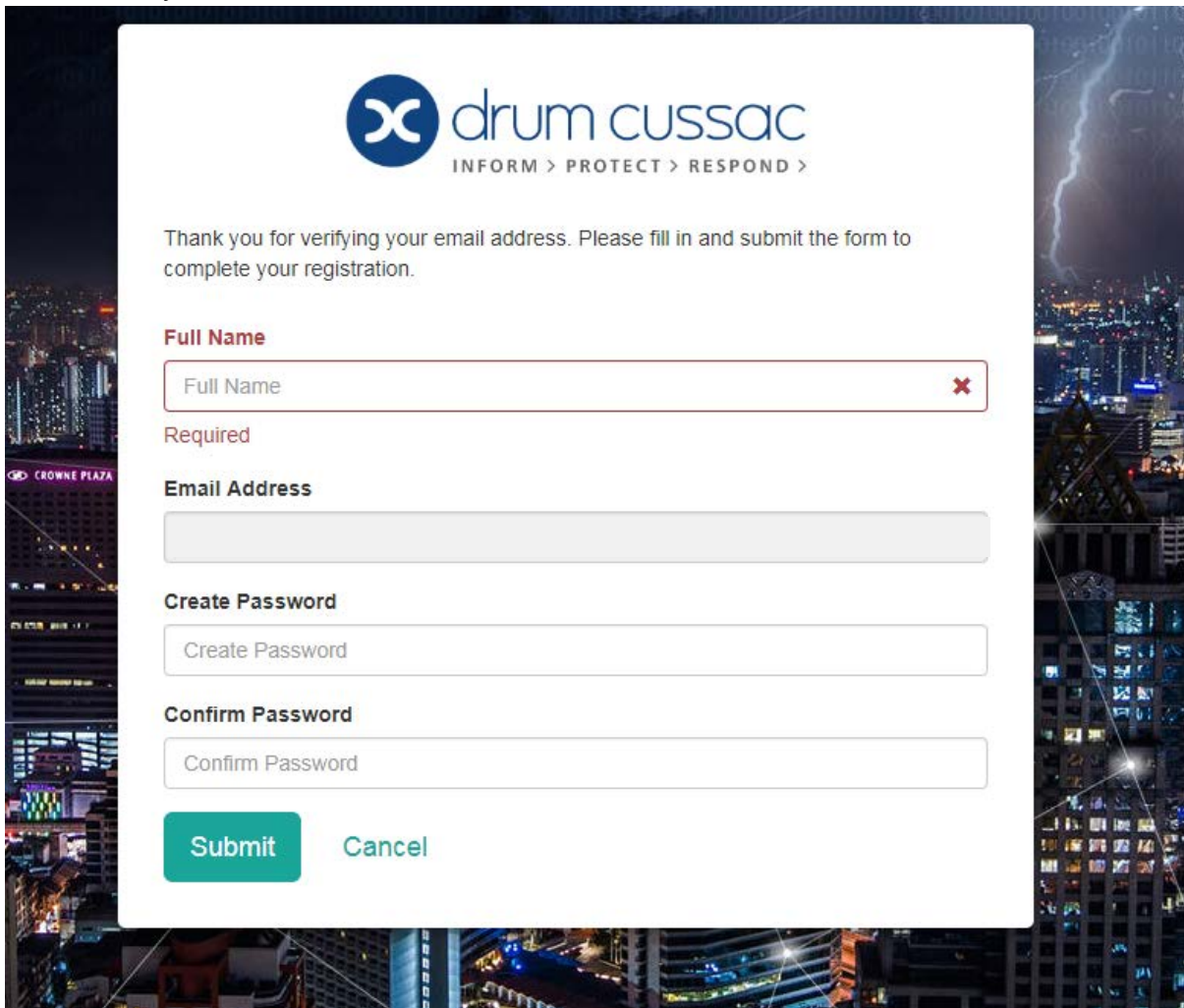


Then you will get an email that looks like this

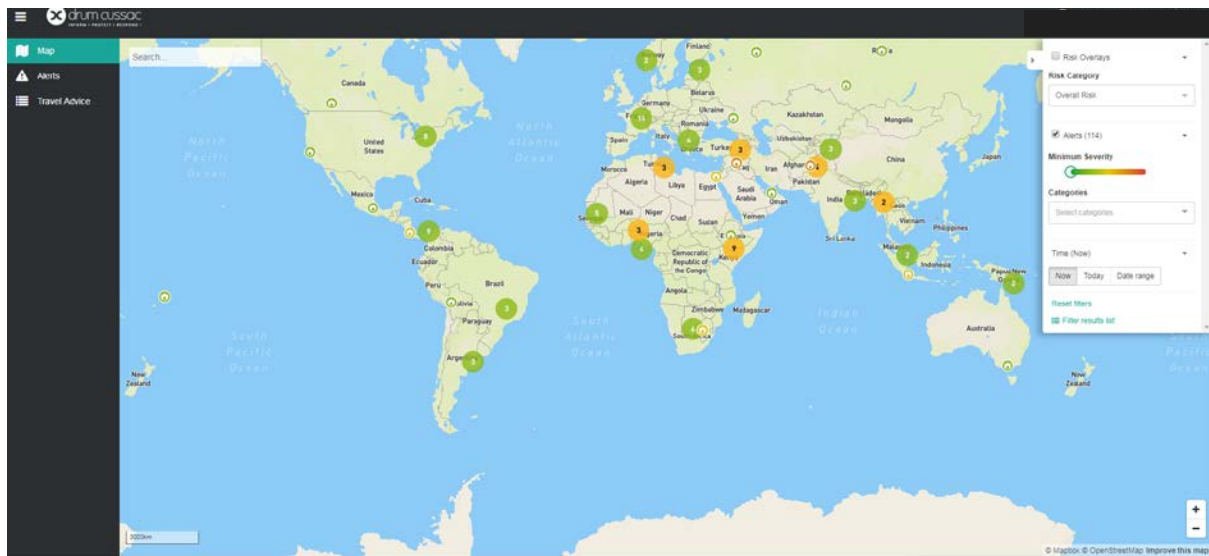
DC Drum Cussac <platform@drum-cussac.net>
RiskMonitor Self-Registration Verification
Annabelle Parsons
If there are problems with how this message is displayed, click here to view it in a web browser.



You then need to click the link and it will take you to the website. Then you can login and create your account

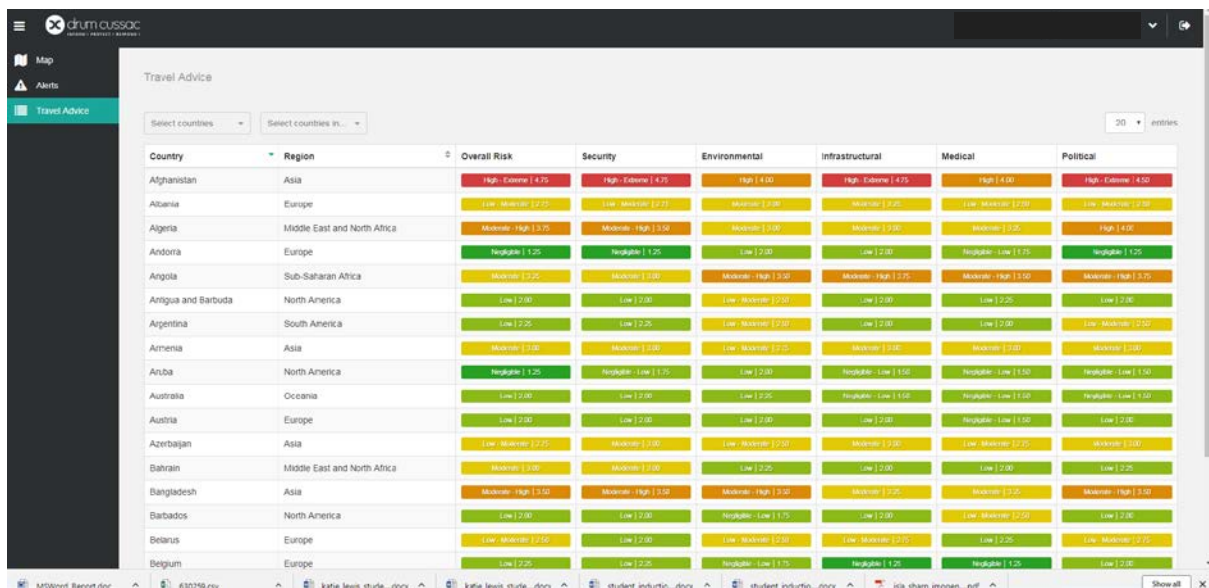


Once you have logged it then it should open up this screen



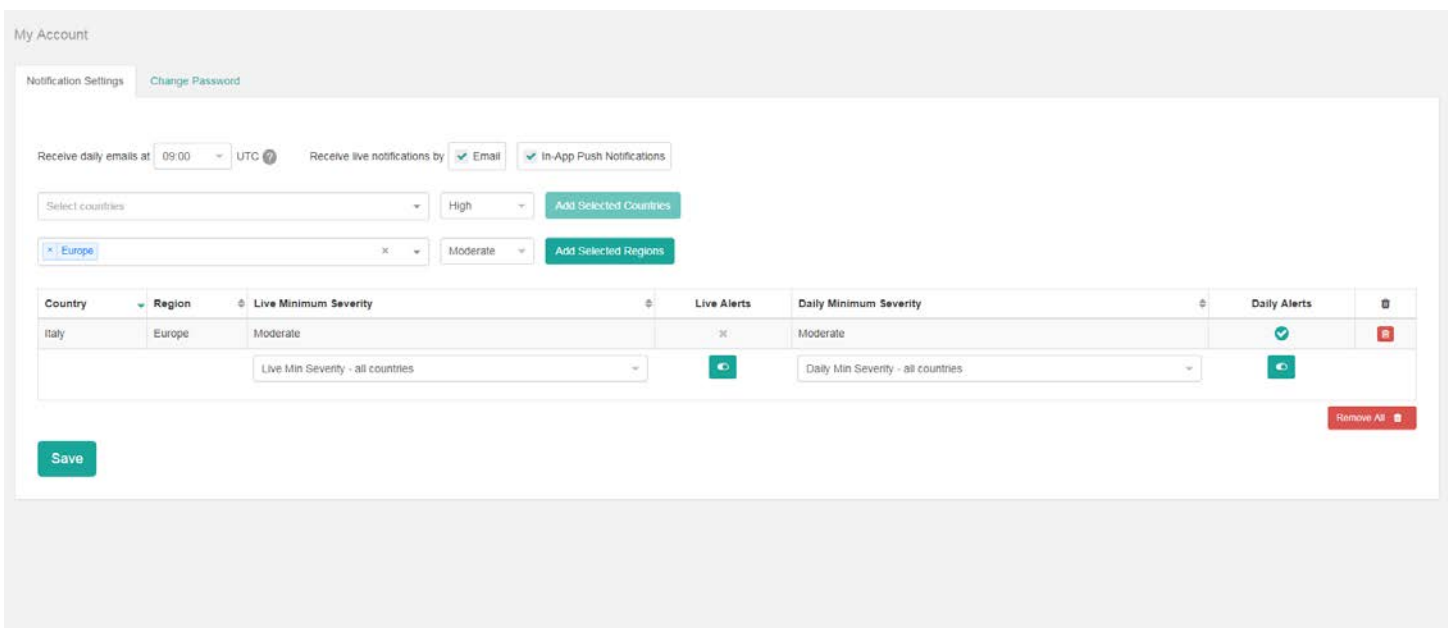
This gives you the option to set up the alerts you choose to set up, you have to download the app otherwise it doesn't work, and you wouldn't get the notifications

The travel advice section gives you advice on particular countries and you can download a PDF of information



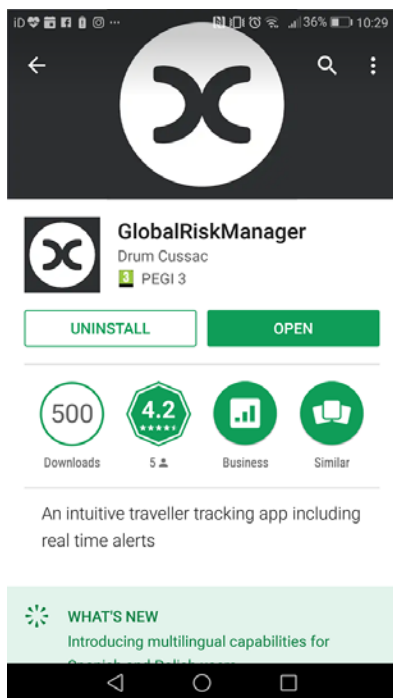
Country	Region	Overall Risk	Security	Environmental	Infrastructural	Medical	Political
Afghanistan	Asia	High - Extreme (4.75)	High - Extreme (4.75)	High (4.00)	High - Extreme (4.75)	High (4.00)	High - Extreme (4.00)
Albania	Europe	Low - Moderate (2.75)	Low - Moderate (2.75)	Moderate (3.00)	Moderate (3.00)	Low - Moderate (2.00)	Low - Moderate (2.75)
Algeria	Middle East and North Africa	Moderate - High (3.75)	Moderate - High (3.50)	Moderate (3.00)	Moderate (3.00)	Moderate (3.00)	High (4.00)
Andorra	Europe	Negligible (1.25)	Negligible (1.25)	Low (2.00)	Low (2.00)	Negligible - Low (1.75)	Negligible (1.25)
Angola	Sub-Saharan Africa	Moderate (3.25)	Moderate (3.00)	Moderate - High (3.50)	Moderate - High (3.75)	Moderate - High (3.50)	Moderate - High (3.75)
Antigua and Barbuda	North America	Low (2.00)	Low (2.00)	Low - Moderate (2.50)	Low (2.00)	Low (2.25)	Low (2.00)
Argentina	South America	Low (2.25)	Low (2.25)	Low - Moderate (2.50)	Low (2.00)	Low (2.00)	Low - Moderate (2.50)
Armenia	Asia	Moderate (3.00)	Moderate (3.00)	Low - Moderate (2.50)	Moderate (3.00)	Moderate (3.00)	Moderate (3.00)
Aruba	North America	Negligible (1.25)	Negligible - Low (1.75)	Low (2.00)	Negligible - Low (1.50)	Negligible - Low (1.50)	Negligible - Low (1.50)
Australia	Oceania	Low (2.00)	Low (2.00)	Low (2.25)	Negligible - Low (1.50)	Negligible - Low (1.50)	Negligible - Low (1.50)
Austria	Europe	Low (2.00)	Low (2.00)	Low (2.00)	Low (2.00)	Negligible - Low (1.50)	Low (2.00)
Azerbaijan	Asia	Low - Moderate (2.75)	Moderate (3.00)	Low - Moderate (2.50)	Moderate (3.00)	Low - Moderate (2.75)	Moderate (3.00)
Bahrain	Middle East and North Africa	Moderate (3.00)	Moderate (3.00)	Low (2.25)	Low (2.00)	Low (2.00)	Low (2.25)
Bangladesh	Asia	Moderate - High (3.50)	Moderate - High (3.50)	Moderate - High (3.50)	Moderate (3.25)	Moderate (3.25)	Moderate - High (3.50)
Barbados	North America	Low (2.00)	Low (2.00)	Negligible - Low (1.75)	Low (2.00)	Low - Moderate (2.25)	Low (2.00)
Belarus	Europe	Low - Moderate (2.75)	Low (2.00)	Low - Moderate (2.50)	Low - Moderate (2.75)	Low (2.25)	Low - Moderate (2.75)
Belgium	Europe	Low (2.25)	Low (2.25)	Negligible - Low (1.75)	Negligible (1.25)	Negligible (1.25)	Low (2.00)

If you select my account on the top of the screen you access this by clicking your name at the top and then a drop-down menu comes up you can then select the country you are going to and select to get emails at a set time each day about the country in the drop down choose to be notified about moderate risks as the minimum

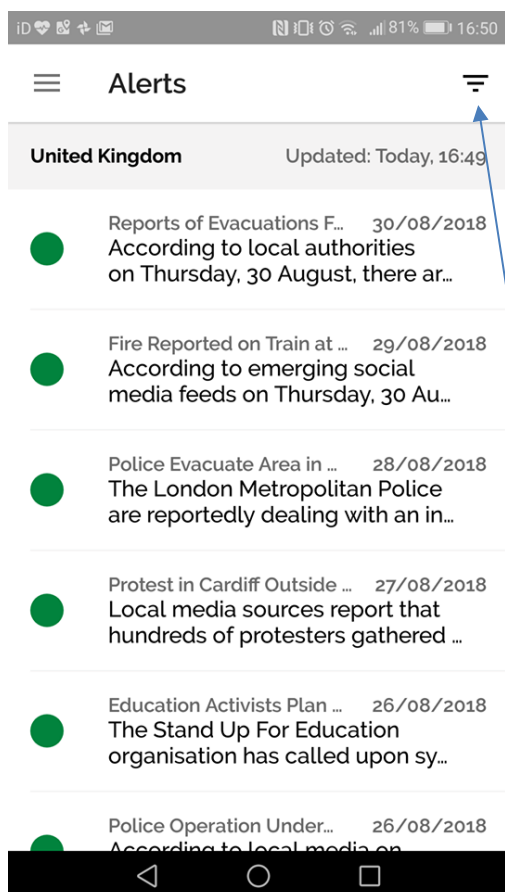


You then need to download the App from your phone's app store it is called **“Global Risk Manager”**

You login to this with the login details you have set up for the website



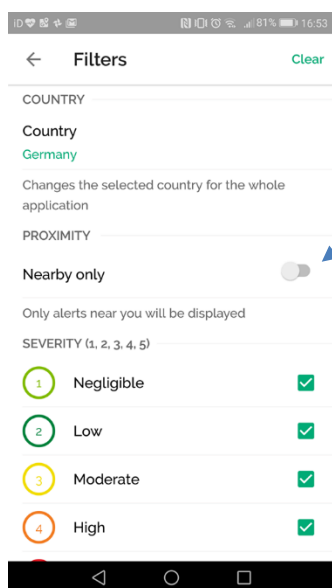
If you turn on the option that the app can see your location it will then give you updates for where you are in the world



If you click the upside down pyramid at the top then you can select the country you want to see updates for

Under alerts you will see all the alerts of events happening in those countries

For example, you can then click Germany and then the whole app will tell you what is happening in Germany



You can also select nearby only and then select the proximity to you for how close you want to know events that are happening