

WOLFSON BUILDING

LAST UPDATED 13TH JUNE 2013

Purpose:

The purpose of a Generic Emergency Evacuation Plan (GEEP) is to enable visitors to the building with restricted mobility or those who may not be able to evacuate unaided to become familiar with the layout, evacuation procedures, available equipment and communication devices.

If you feel that this document does not provide you with sufficient information or that you require further assistance, please contact the Loughborough University Fire Officer on 01509 222182.

The building:

The Wolfson building is comprised of 3 floors. All floors are accessible via the lift in the main entrance.

Ground floor has accessible emergency exits that lead to the fire assembly point. These are located in the main entrance lobby.

The first and second floors have three fire exits accessible via the central corridor. Each of these exits are nominated safe refuge areas and provide a disabled emergency call point which links directly to security. These safe refuge areas are to be considered as the primary emergency egress points.

In addition to the fire exit stair cases, an alternative, accessible evacuation can be made via the central corridor and into the Mechanical Engineering wing of the building. This should only be used when the safe refuge areas are inaccessible.

Action required on hearing the fire alarm:

If able, you should leave the building immediately by the nearest fire exit (see attached floor plan) and report to the assigned assembly point for the building.

If you are unable to evacuate the building unaided, please proceed to one of the safe refuges located in each stair core (see attached floor plan), or if practical, use the alternate evacuation route into the Mechanical Engineering wing of the building.

A disabled emergency call point is available in each safe refuge. Use this to contact the security team and notify them of your location, details of which are printed on the front of the panel. Full details on how to use the emergency call point are also provided in the safe refuge.

Other recommendations:

It is recommended that all visitors to the Wolfson Building should familiarise themselves with the fire alarm signals and floor layout of the building. Floor plans and fire equipment locations have been provided with this document.

Equipment provided:

In addition to the general alarm, three safe refuge areas are available on the first and second floors. A disabled emergency call point that links directly to security is located in each of the safe refuge areas.

On the ground floor, accessible fire exits are located in the building main entrance (see attached plans) and these are to be used as primary exit from the main stair cores.

Alternate emergency evacuation from first and second floors is possible via the Mechanical Engineering wing of the building.

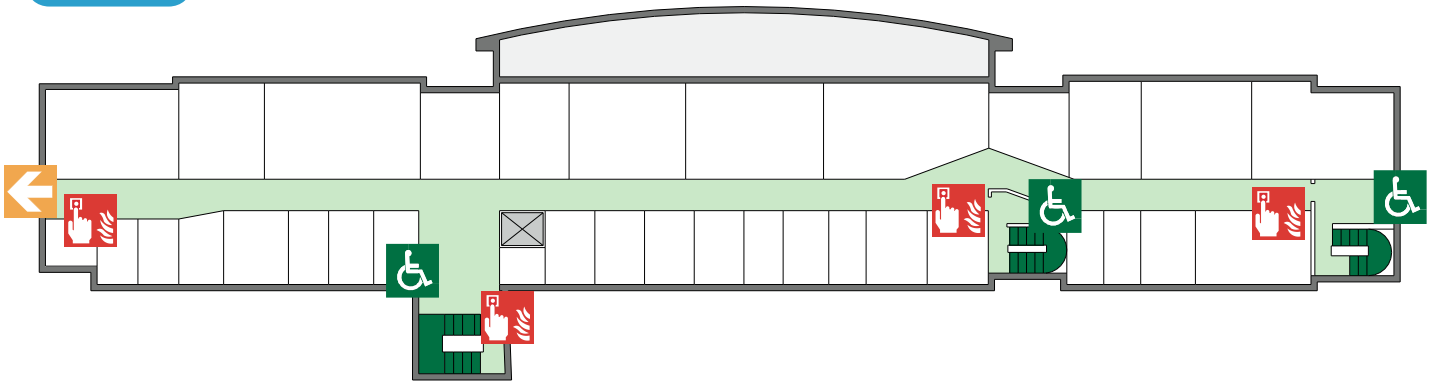


YOUR ASSEMBLY POINT IS:

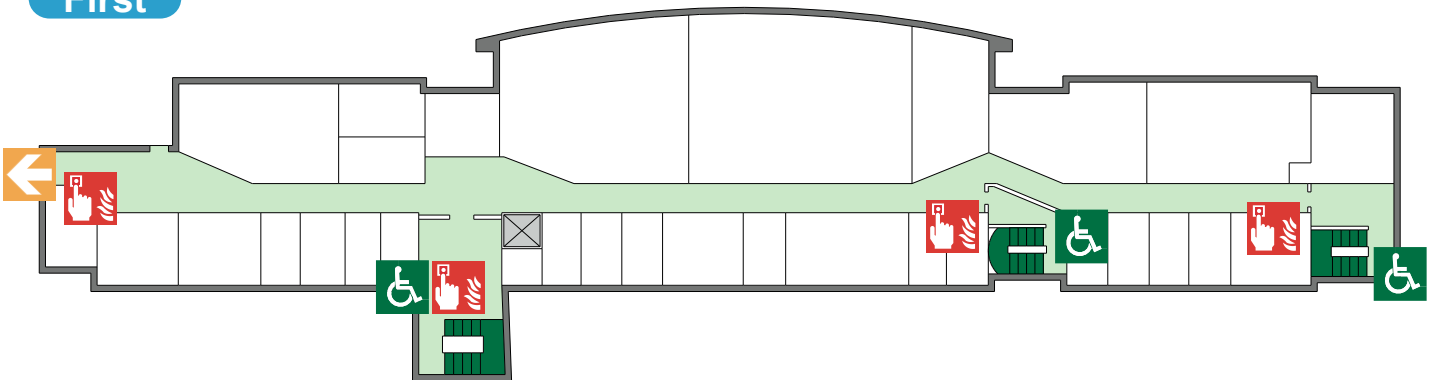
Fire assembly point 28 - By the Village Restaurant

WOLFSON BUILDING

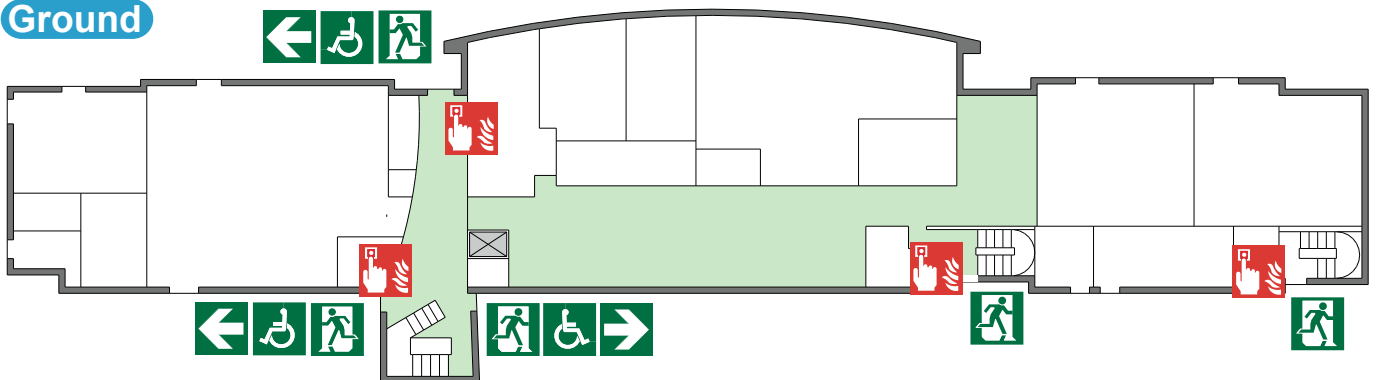
Second




First




Ground



 Alternate evacuation route via Mechanical Engineering Building

 Safe refuge

 Accessible final exit

 Call point