

FIRE ESCAPE PLAN

LOUGHBOROUGH UNIVERSITY FIRE INSTRUCTIONS

ANY PERSON DISCOVERING A FIRE



Sound the alarm.
Operate the nearest fire alarm call point.



Telephone Security on the emergency number 0800 526966.



Do not attack fire with extinguisher unless trained to do so.

ON HEARING THE ALARM



Evacuate building and go to assembly point.
Your assembly point is:-

Assembly Point 3

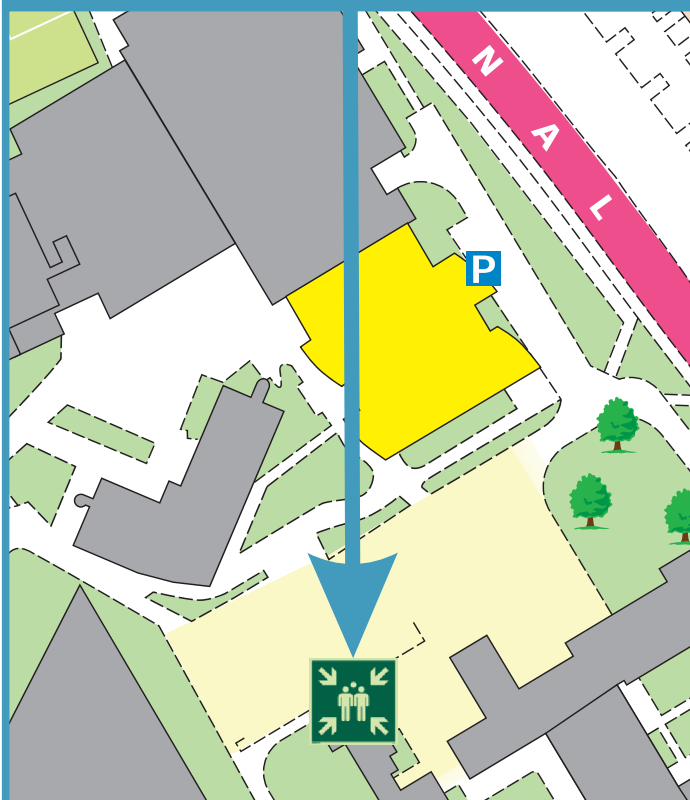


When alarm is given - do not panic, do not run.
Leave the building following the fire emergency exit signs.

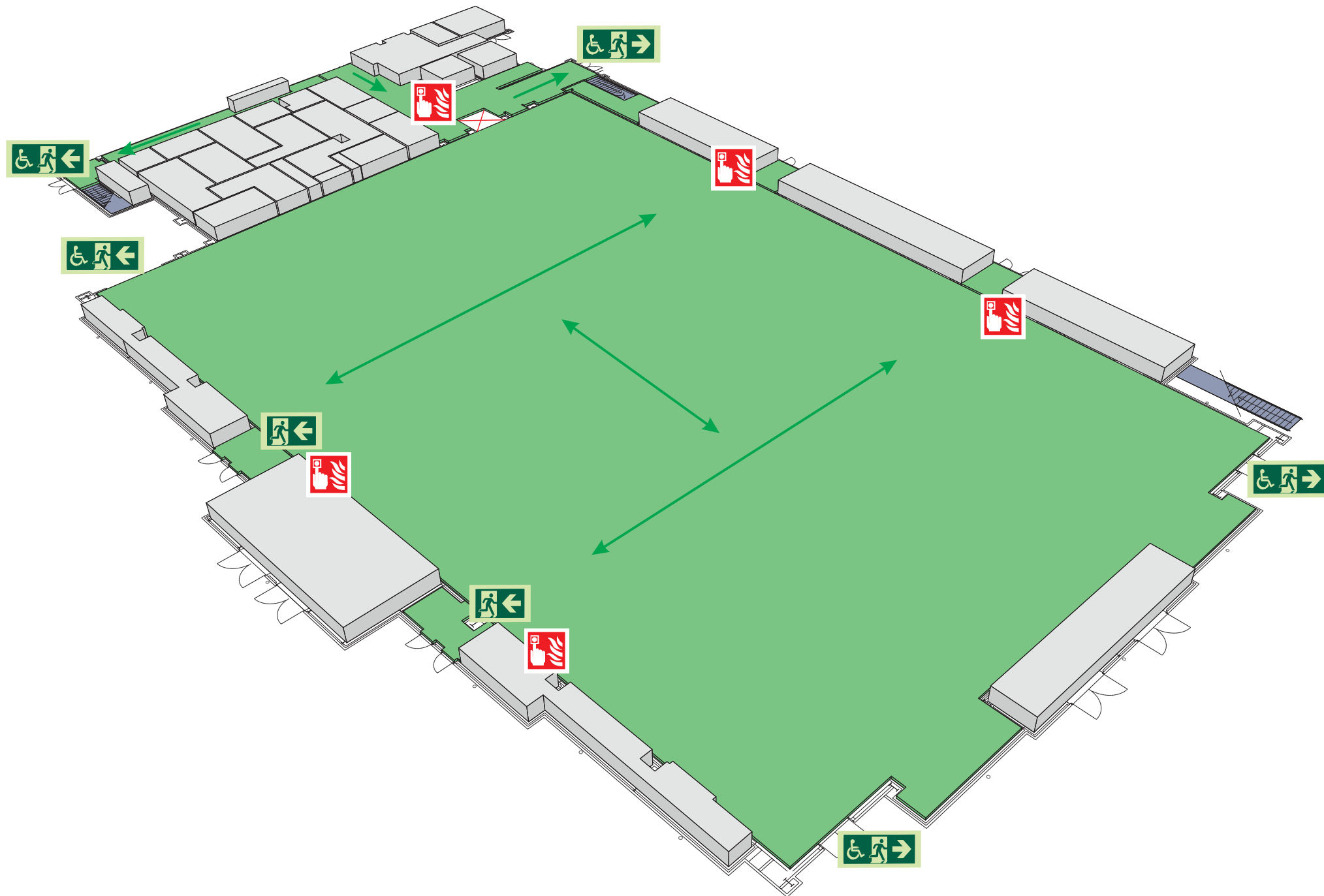


Do not re-enter the building unless told to do so by the Fire Marshall, Warden or Fire Service.

ASSEMBLY POINT 3 IS ALLOCATED TO THE BUILDINGS SHOWN IN YELLOW



Sir David Wallace Building Ground Floor



The Deaf Alerter system is installed in the building.
Please contact the University Fire Officer on 01509 222182 for further advice.

simplydesignsolutions

Loughborough
University



Fire alarm
Call point



Fire exit



Wheelchair
accessible exit



Fire escape route



Assembly point



Safe refuge



Evac lift



Evac coms



Non evac coms

FIRE ESCAPE PLAN

LOUGHBOROUGH UNIVERSITY FIRE INSTRUCTIONS

ANY PERSON DISCOVERING A FIRE



Sound the alarm.
Operate the nearest fire alarm call point.



Telephone Security on the emergency
number 0800 526966.



Do not attack fire with extinguisher
unless trained to do so.

ON HEARING THE ALARM



Evacuate building and go to assembly
point.

Your assembly point is:-

Assembly Point 3

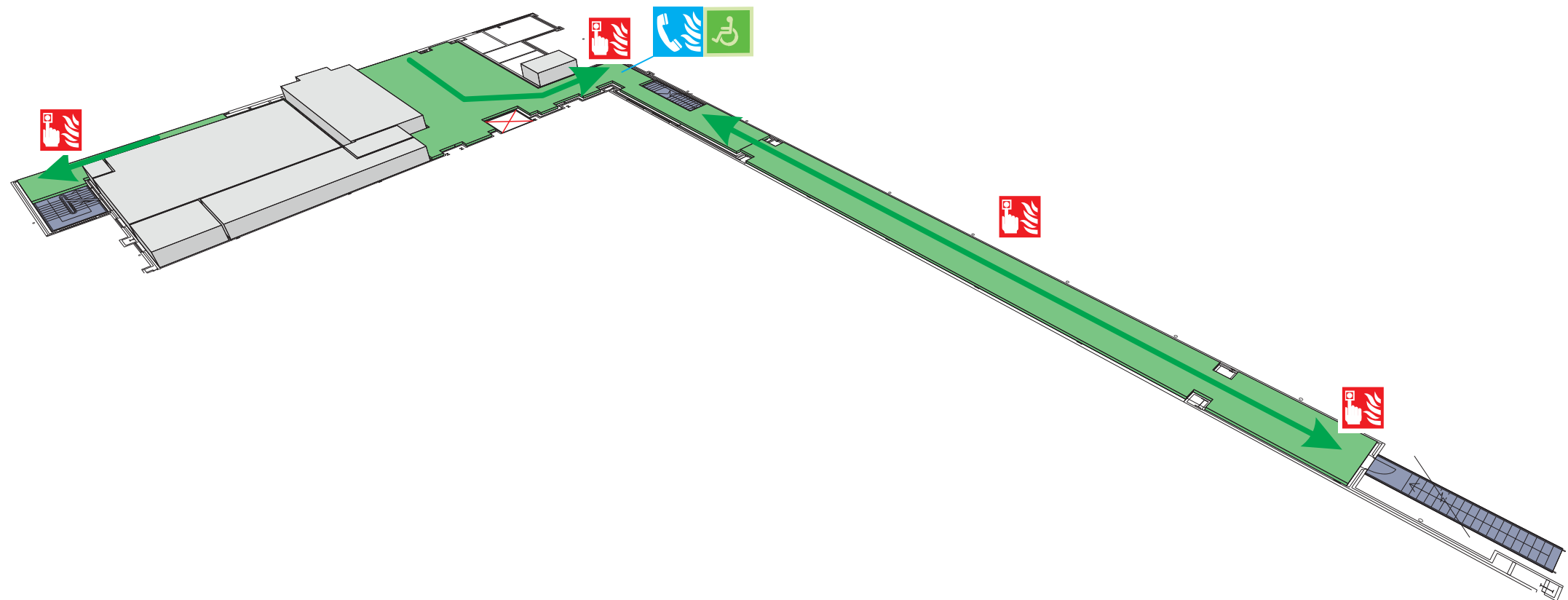
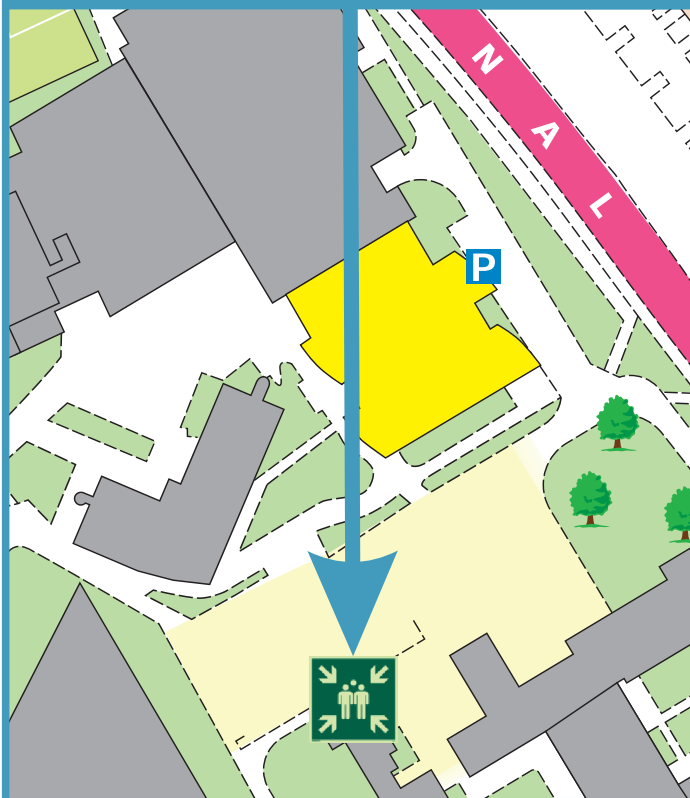


When alarm is given - do not panic, do
not run.
Leave the building following the fire
emergency exit signs.



Do not re-enter the building unless told
to do so by the Fire Marshall, Warden or
Fire Service.

ASSEMBLY POINT 3 IS ALLOCATED TO THE BUILDINGS SHOWN IN YELLOW



The Deaf Alerter system is installed in the building.
Please contact the University Fire Officer on **01509 222182** for further advice.

simplydesignsolutions

Sir David Wallace Building First Floor



Fire alarm
Call point



Fire exit



Wheelchair
accessible exit



Fire escape route



Assembly point



Safe refuge



Evac lift



Evac coms



Non evac coms

Loughborough
University

FIRE ESCAPE PLAN

LOUGHBOROUGH UNIVERSITY FIRE INSTRUCTIONS

ANY PERSON DISCOVERING A FIRE



Sound the alarm.
Operate the nearest fire alarm call point.



Telephone Security on the emergency number 0800 526966.



Do not attack fire with extinguisher unless trained to do so.

ON HEARING THE ALARM



Evacuate building and go to assembly point.
Your assembly point is:-

Assembly Point 3

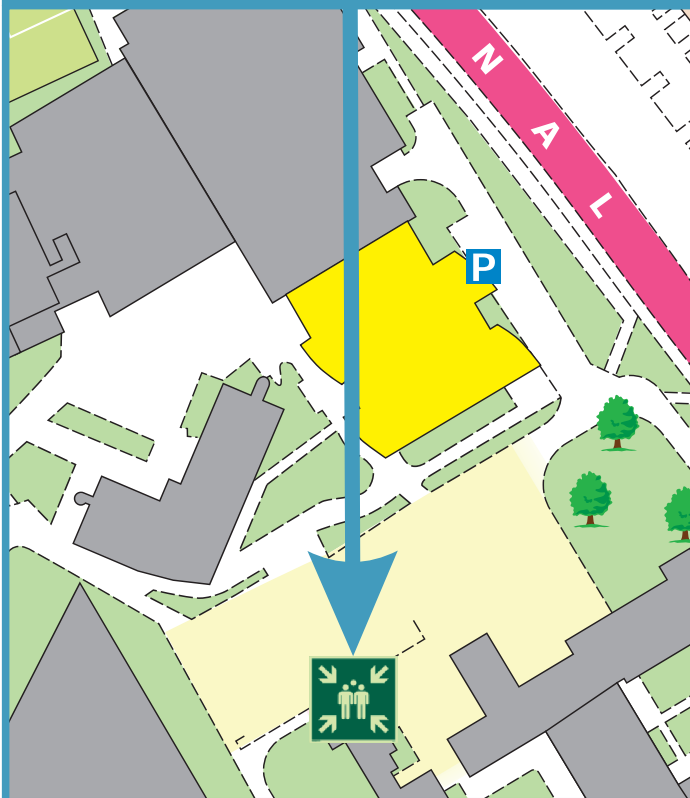


When alarm is given - do not panic, do not run.
Leave the building following the fire emergency exit signs.

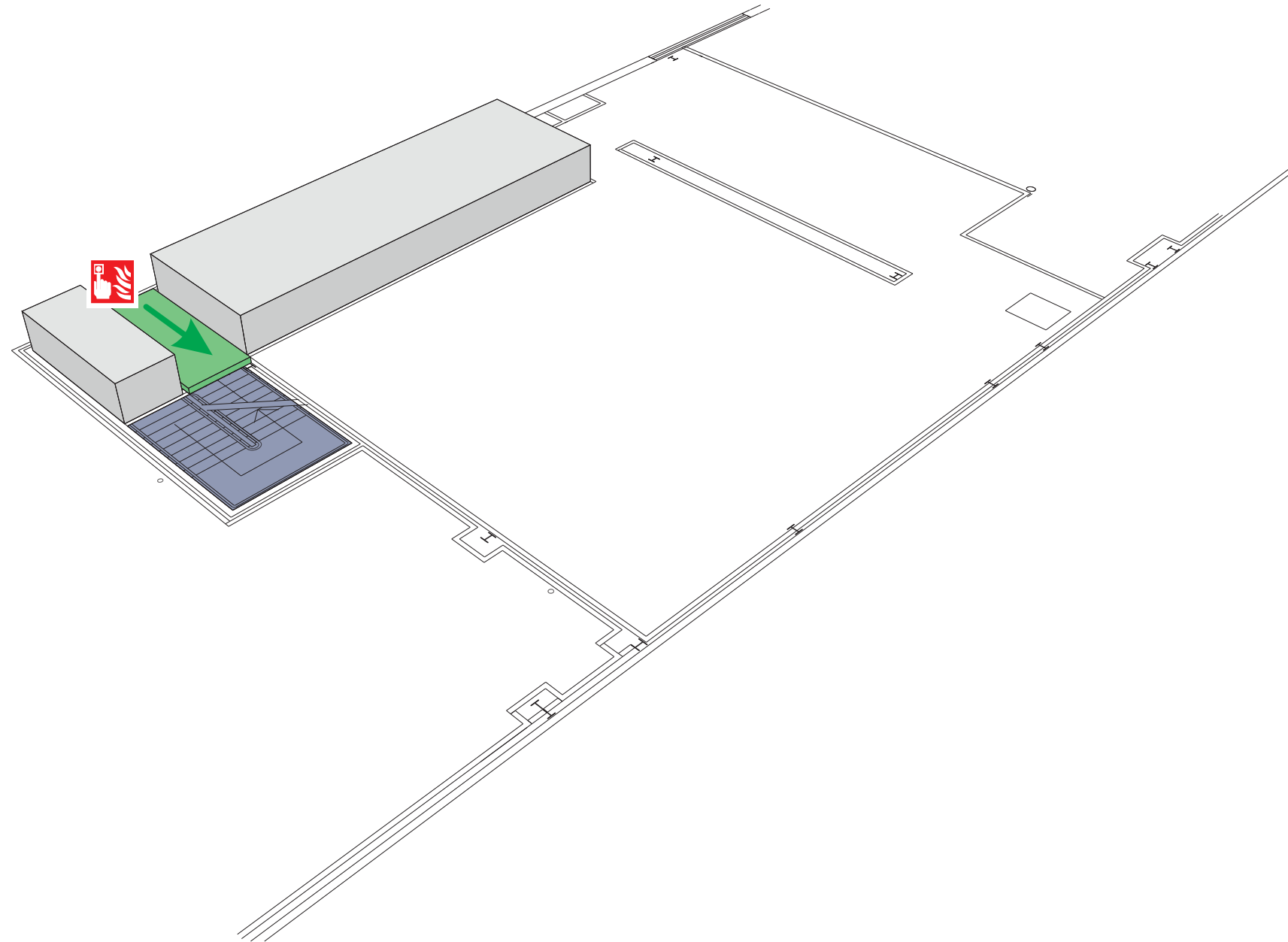


Do not re-enter the building unless told to do so by the Fire Marshall, Warden or Fire Service.

ASSEMBLY POINT 3 IS ALLOCATED TO THE BUILDINGS SHOWN IN YELLOW



Sir David Wallace Building Plant



Fire alarm
Call point



Fire exit



Wheelchair
accessible exit



Fire escape route



Assembly point



Safe refuge



Evac lift



Evac coms



Non evac coms



The Deaf Alerter system is installed in the building.
Please contact the University Fire Officer on 01509 222182 for further advice.

simplydesignsolutions

Loughborough
University