

MECHANICAL ENGINEERING BUILDING

LAST UPDATED 13TH JUNE 2013

Purpose:

The purpose of a Generic Emergency Evacuation Plan (GEEP) is to enable visitors to the building with restricted mobility or those who may not be able to evacuate unaided to become familiar with the layout, evacuation procedures, available equipment and communication devices.

If you feel that this document does not provide you with sufficient information or that you require further assistance, please contact the Loughborough University Fire Officer on 01509 222182.

The building:

The Mechanical Engineering building is comprised of 3 floors. All floors are accessible via the lift.

Ground floor has accessible emergency exits as well as a alternate emergency egress through Wolfson building.

The first and second floors have two stair cores, both of which are nominated safe refuge areas and provide a disabled emergency call point which links directly to security.

Alternate emergency egress is also available by using the connecting walkway through to Wolfson building on first and second floors.

Action required on hearing the fire alarm:

If able, you should leave the building immediately by the nearest fire exit (see attached floor plan) and report to the assigned assembly point for the building.

If you are unable to evacuate the building unaided, please proceed to one of the safe refuges located in each stair core (see attached floor plan).

A disabled emergency call point is available in each safe refuge. Use this to contact the security team and notify them of your location, details of which are printed on the front of the panel. Full details on how to use the emergency call point are also provided in the safe refuge.

Other recommendations:

It is recommended that all visitors to the Mechanical Engineering building should familiarise themselves with the fire alarm signals and floor layout of the building. Floor plans and fire equipment locations have been provided with this document.

Equipment provided:

In addition to the general alarm, four safe refuge areas are available on the first and second floors. A disabled emergency call point that links directly to security is located in each of the safe refuge areas.

Accessible fire exits are available on the ground and first floor of the building (see attached plans), and these are to be used as primary exit from the main stair cores.

Alternate emergency egress is also available through the Wolfson building.

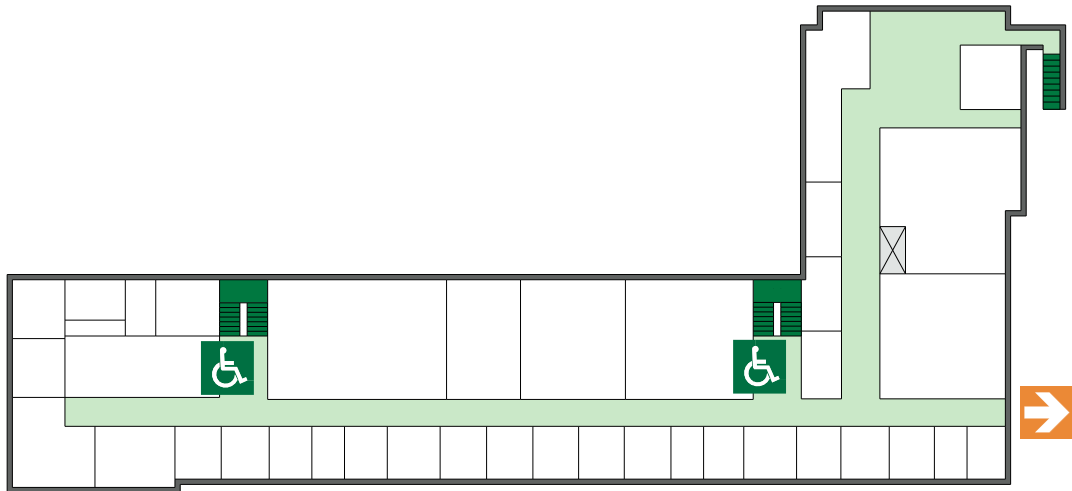


YOUR ASSEMBLY POINT IS:

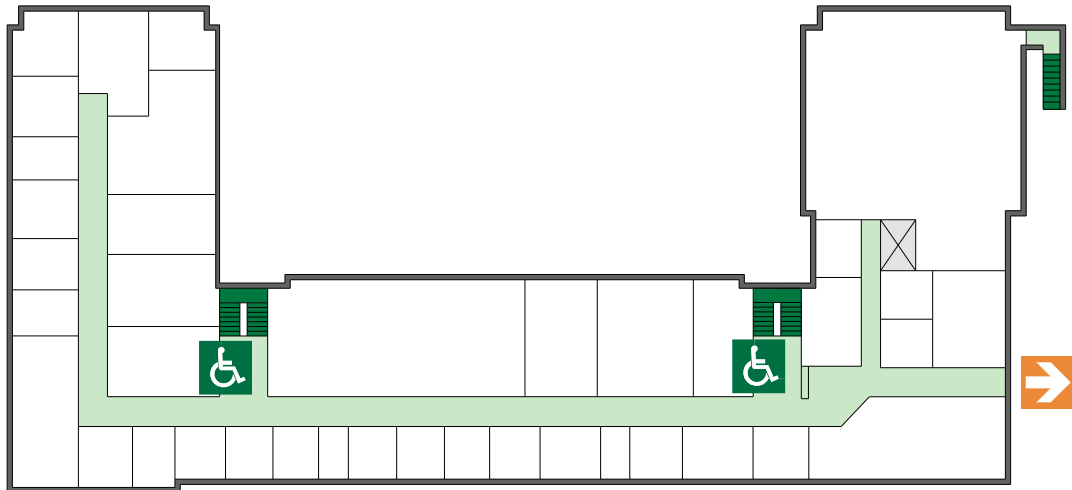
Fire assembly point 28 - By Village Restaurant

MECHANICAL ENGINEERING BUILDING

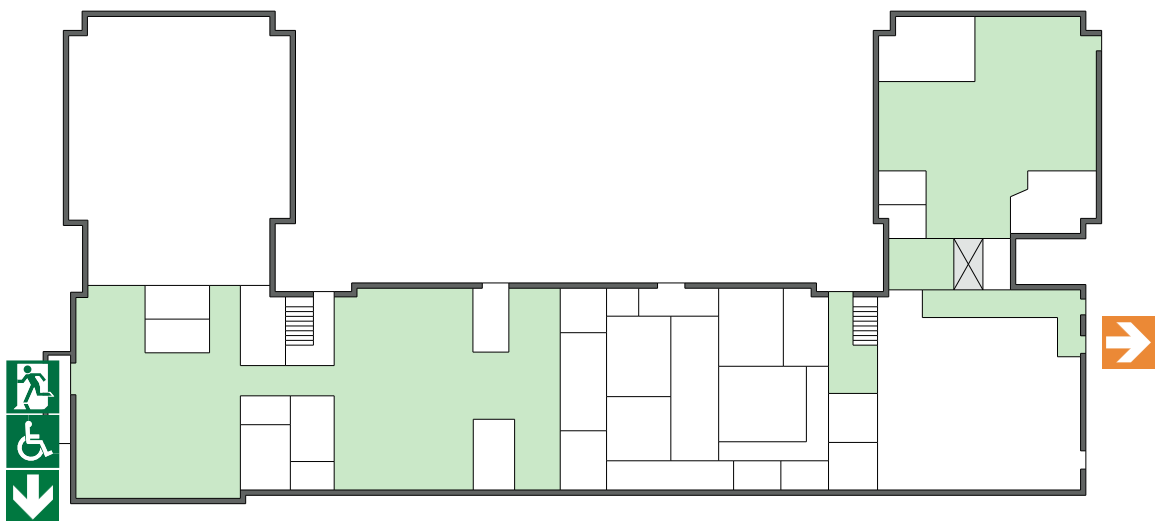
Second



First



Ground



Accessible final exit



Alternate emergency egress via Wolfson Building



Safe refuge