

James France Building

LAST UPDATED 17th January 2014

Purpose:

The purpose of a Generic Emergency Evacuation Plan (GEEP) is to enable visitors to the building with restricted mobility or those who may not be able to evacuate unaided to become familiar with the layout, evacuation procedures, available equipment and communication devices.

If you feel that this document does not provide you with sufficient information or that you require further assistance, please contact the Loughborough University Fire Officer on 01509 222182.

The building:

The James France building is comprised of 2 adjoining buildings. The main lecture theatre building is split over ground and mezzanine floor and the admin block on floors ground, first and second.

The lecture theatres are accessible from the ground floor with a lift and stairs providing access to the mezzanine level. Ground floor has several accessible emergency exits that lead to the fire assembly point. Alternative emergency egress is also available from ground floor through the Stuart Mason building.

A disabled emergency call point is available on the mezzanine level in the exhibition area. Use this to contact the security team and notify them of your location, details of which are printed on the front of the panel. Full details on how to use the emergency call point are also provided.

There are no lifts in the admin side of the building and there are no safe refuges available.

Action required on hearing the fire alarm:

You should leave the building immediately by the nearest fire exit (see attached floor plan) and report to the assigned assembly point for the building.

Other recommendations:

It is recommended that all visitors to The James France building should familiarise themselves with the fire alarm signals and floor layout. Floor plans and evacuation equipment locations have been provided with this document.

Equipment provided:

Accessible fire exits are available on the ground floor of the lecture theatres and the admin building, and these are to be used as primary exits from building.

A disabled emergency call point is available on the mezzanine level in the exhibition area. Use this to contact the security team and notify them of your location, details of which are printed on the front of the panel. Full details on how to use the emergency call point are also provided.



The Deaf Alerter system is installed in this building. If you would like access to a Deaf Alerter device, please contact the University Fire Officer on 01509 222182.

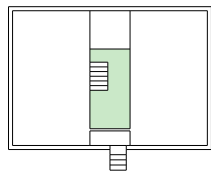


YOUR ASSEMBLY POINT IS:

Fire assembly point 15 - Margaret Keay Road

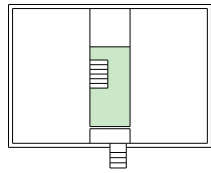
James France Building

Second



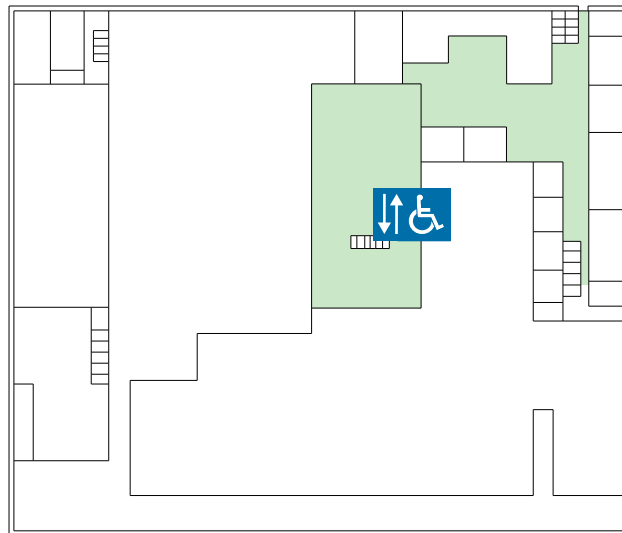
Admin

First

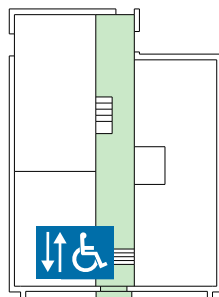


Admin

Mezzanine



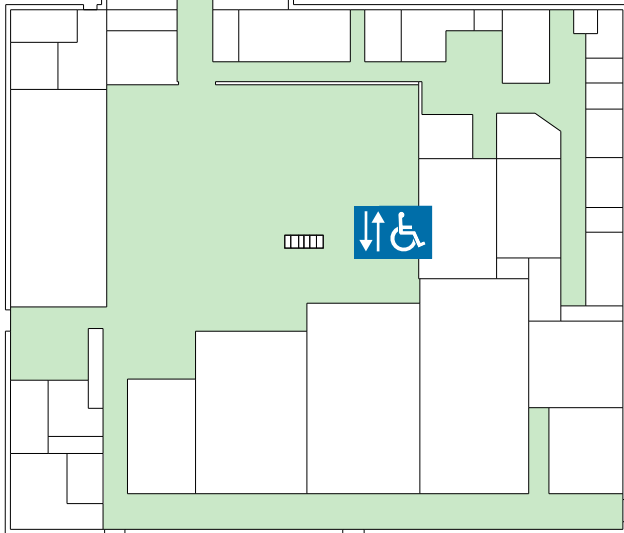
Lecture



Admin



Ground



Lecture



Egress via Stuart Mason Building



Accessible final exit



Wheelchair lift.



Safe refuge