

SIR DAVID DAVIES BUILDING

LAST UPDATED 13TH JUNE 2013

Purpose:

The purpose of a Generic Emergency Evacuation Plan (GEEP) is to enable visitors to the building with restricted mobility or those who may not be able to evacuate unaided to become familiar with the layout, evacuation procedures, available equipment and communication devices.

If you feel that this document does not provide you with sufficient information or that you require further assistance, please contact the Loughborough University Fire Officer on 01509 222182.

The building:

The Sir David Davies building is comprised of 3 floors. All floors are accessible via the lifts.

The building is split level with ground and first floors having accessible emergency exits that lead to the fire assembly point.

The first floor has seven fire exit stair cores accessible via the central corridors. Five of these exits are nominated safe refuge areas and provide a disabled emergency call point which links directly to security.

The second floor has five fire exit stair cores accessible via the central corridors. Four of these exits are nominated safe refuge areas and provide a disabled emergency call point which links directly to security.

Alternate emergency egress is also available by using the connecting walkway through to S building on first and second floor.

Action required on hearing the fire alarm:

If able, you should leave the building immediately by the nearest fire exit (see attached floor plan) and report to the assigned assembly point for the building.

If you are unable to evacuate the building unaided, please proceed to one of the safe refuges located in each stair core (see attached floor plan).

A disabled emergency call point is available in each safe refuge. Use this to contact the security team and notify them of your location, details of which are printed on the front of the panel. Full details on how to use the emergency call point are also provided in the safe refuge.

Other recommendations:

It is recommended that all visitors to the Sir David Davies Building should familiarise themselves with the fire alarm signals and floor layout of the building. Floor plans and fire equipment locations have been provided with this document.

Equipment provided:

In addition to the general alarm, four safe refuge areas are available on first and second floors. A disabled emergency call point that links directly to security is located in each of the safe refuge areas.

Accessible fire exits are available on the ground and first floor of the building (see attached plans), and these are to be used as primary exit from the main stair cores.

The Deaf Alerter system is installed in this building. If you would like access to a Deaf Alerter device, please contact the University Fire Officer on 01509 222182.

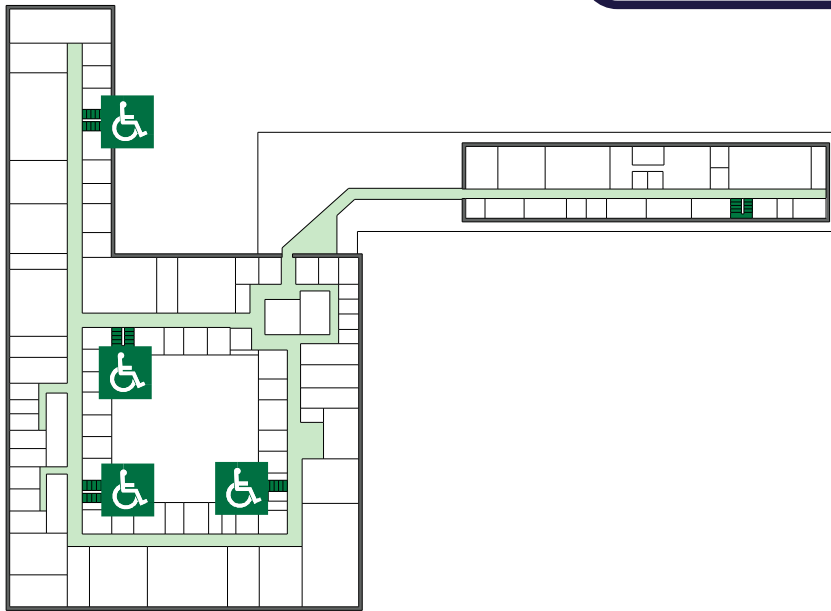


YOUR ASSEMBLY POINT IS:

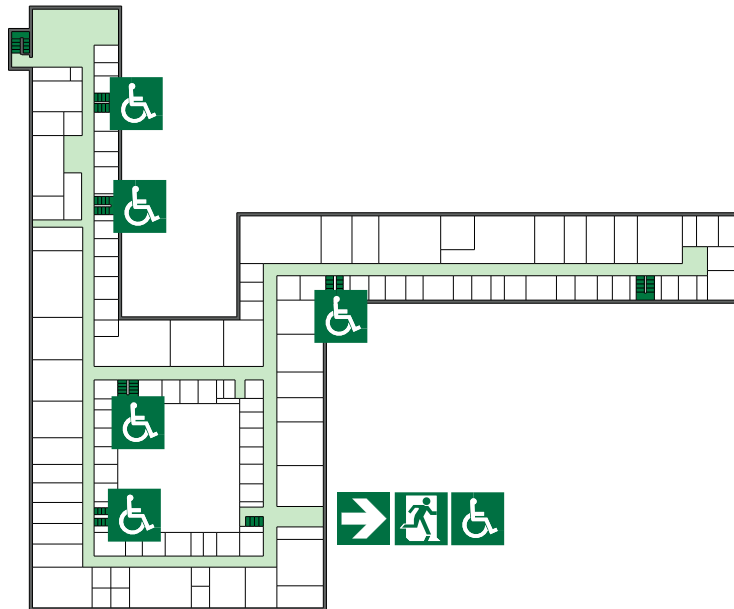
Fire assembly point 9 - Opposite main entrance

SIR DAVID DAVIES BUILDING

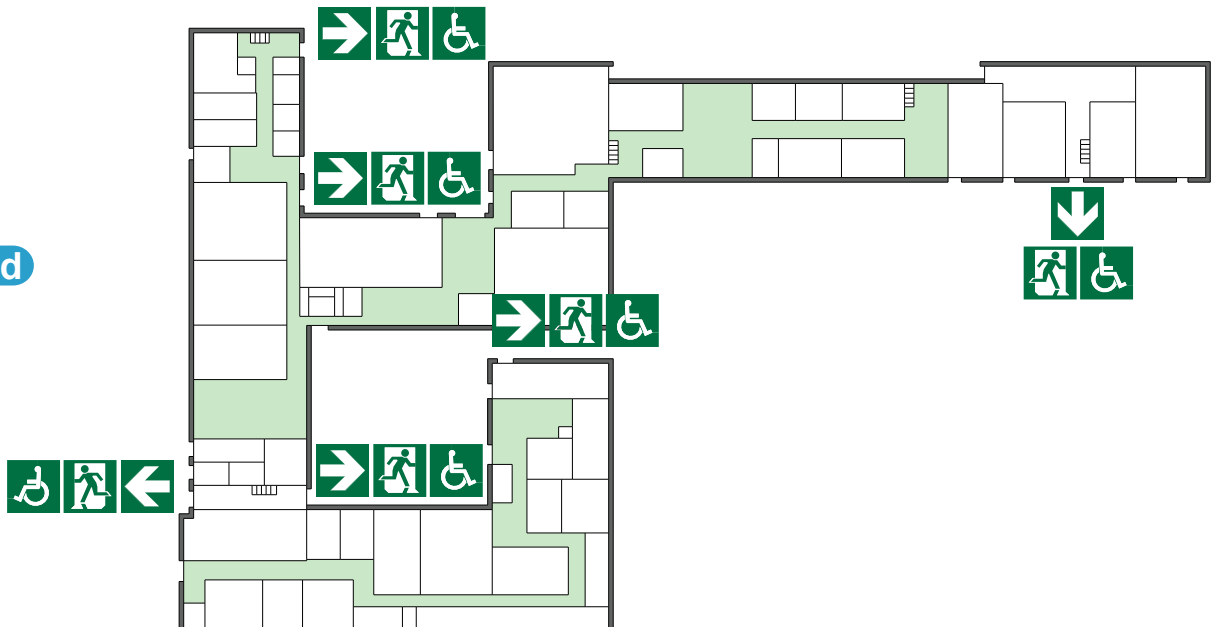
Second



First



Ground



 Accessible final exit

 Safe refuge