

DAVID COLLETT HALL

LAST UPDATED 17th January 2014

Purpose:

The purpose of a Generic Emergency Evacuation Plan (GEEP) is to enable visitors to the building with restricted mobility or those who may not be able to evacuate unaided to become familiar with the layout, evacuation procedures, available equipment and communication devices.

If you feel that this document does not provide you with sufficient information or that you require further assistance, please contact the Loughborough University Fire Officer on 01509 222182.

The building:

David Collett Hall is comprised two blocks, D and E.

Block E has 4 floors from Lower ground through to 2 and provides access to block D on level 2. Accessible fire exits through block D are possible on this level. All stair cores in block E are designated safe refuge areas, each of which provides a disabled emergency call point which links directly to security (see attached floor plan). Accessible fire exits in block E are on ground floor and also through Block F at ground level.

All floors in block E are accessible via the lift. This lift is not to be used in an emergency.

Block D has 4 floors from G through to 3 and provides access to block E on level 2 only. All stair cores in block D on levels 1, 2 and 3 are designated safe refuge areas, each of which provides a disabled emergency call point which links directly to security (see attached floor plan). There are no accessible fire exits in Block D

All floors in block D are accessible via the lift in reception. This lift is not to be used in an emergency.

Action required on hearing the fire alarm:

If able, you should leave the building immediately by the nearest fire exit (see attached floor plan) and report to the assigned assembly point for the building.

If you are unable to evacuate the building unaided, please proceed to one of the safe refuges (see attached floor plan).

A disabled emergency call point is available at the safe refuge. Use this to contact the security team and notify them of your location, details of which are printed on the front of the panel. Full details on how to use the emergency call point are also provided in the safe refuge.

Other recommendations:

It is recommended that all visitors to David Collett Hall should familiarise themselves with the fire alarm signals and floor layout. Floor plans and evacuation equipment locations have been provided with this document.

Equipment provided:

In addition to the general alarm, safe refuge areas is available on all floors other than ground.

A disabled emergency call point that links directly to security is located in each of the safe refuge areas.

Accessible fire exits are available on the ground floor of the building (see attached plans), and these are to be used as primary exits from building.



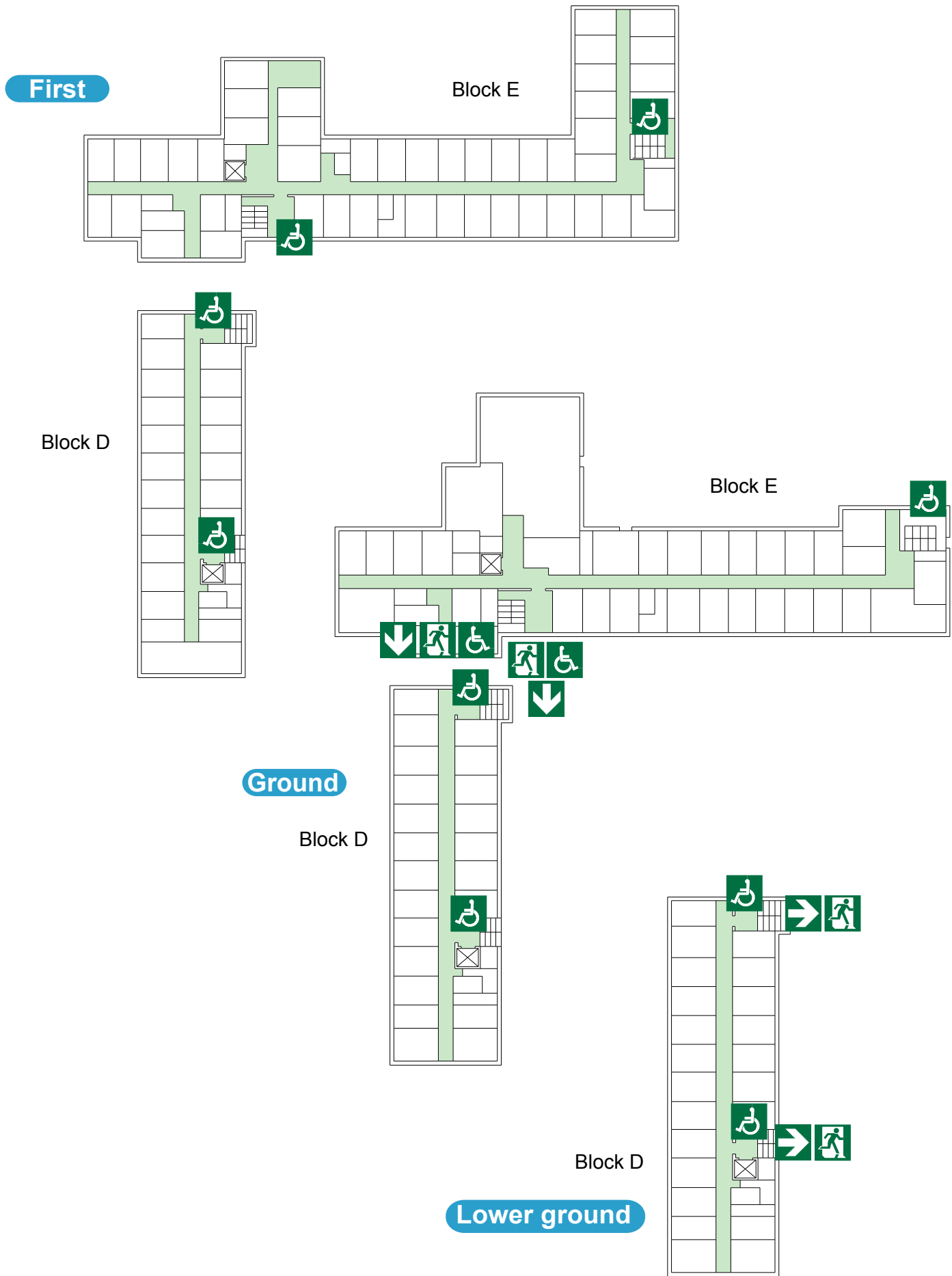
The Deaf Alerter system is installed in this building. If you would like access to a Deaf Alerter device, please contact the University Fire Officer on 01509 222182.



YOUR ASSEMBLY POINT IS:

Fire assembly point 29 - Behind David Collett Building

DAVID COLLETT HALL



Accessible final exit



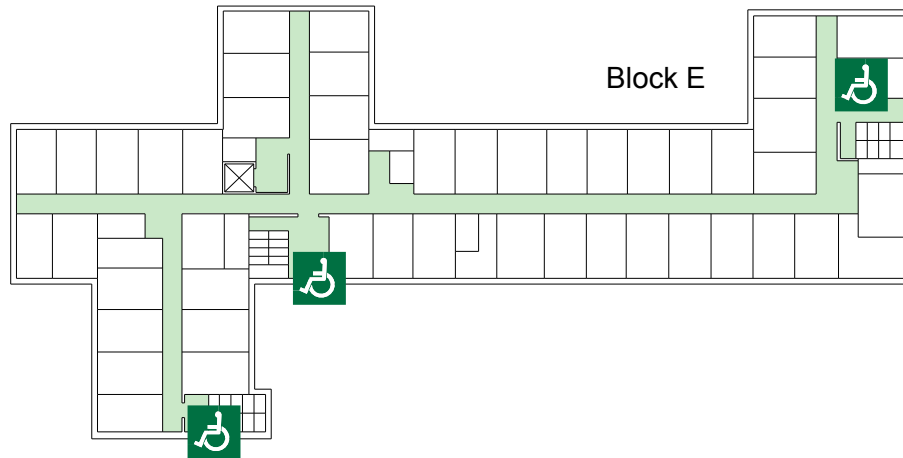
Wheelchair lift.



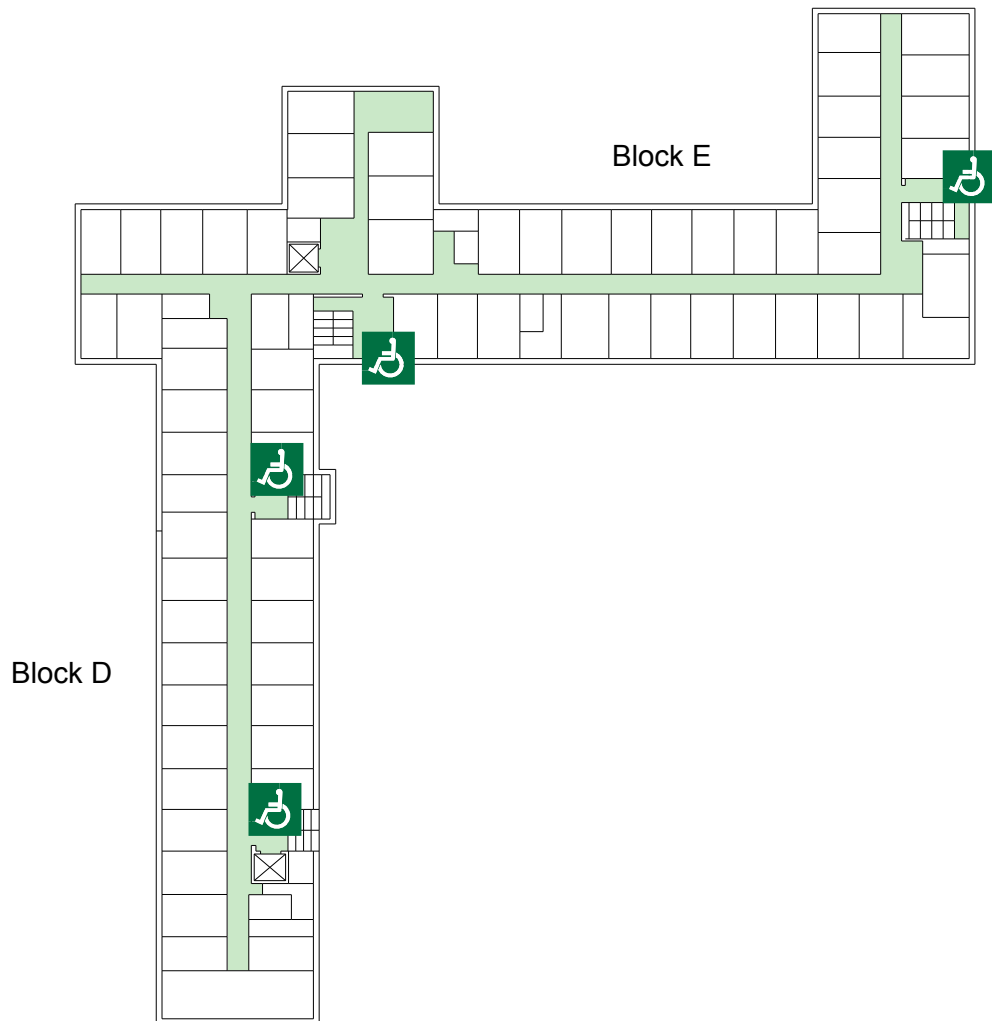
Safe refuge

DAVID COLLETT HALL

Third



Second



Accessible final exit



Wheelchair lift.



Safe refuge