

FIRE ESCAPE PLAN

LOUGHBOROUGH UNIVERSITY
COPE AUDITORIUM - GROUND FLOOR



IN CASE OF FIRE



Operate nearest fire alarm call point



Telephone internal emergency number 888 or 0800 526966 if using outside line or mobile phone. In the event of a delay call 999 for the Fire Service giving the correct location of the building.



Do not attack the fire with extinguisher unless trained to do so.

ON HEARING THE ALARM



Evacuate the building and go to the assembly point. Your assembly point is :-

**Opposite main entrance
Assembly point 2**



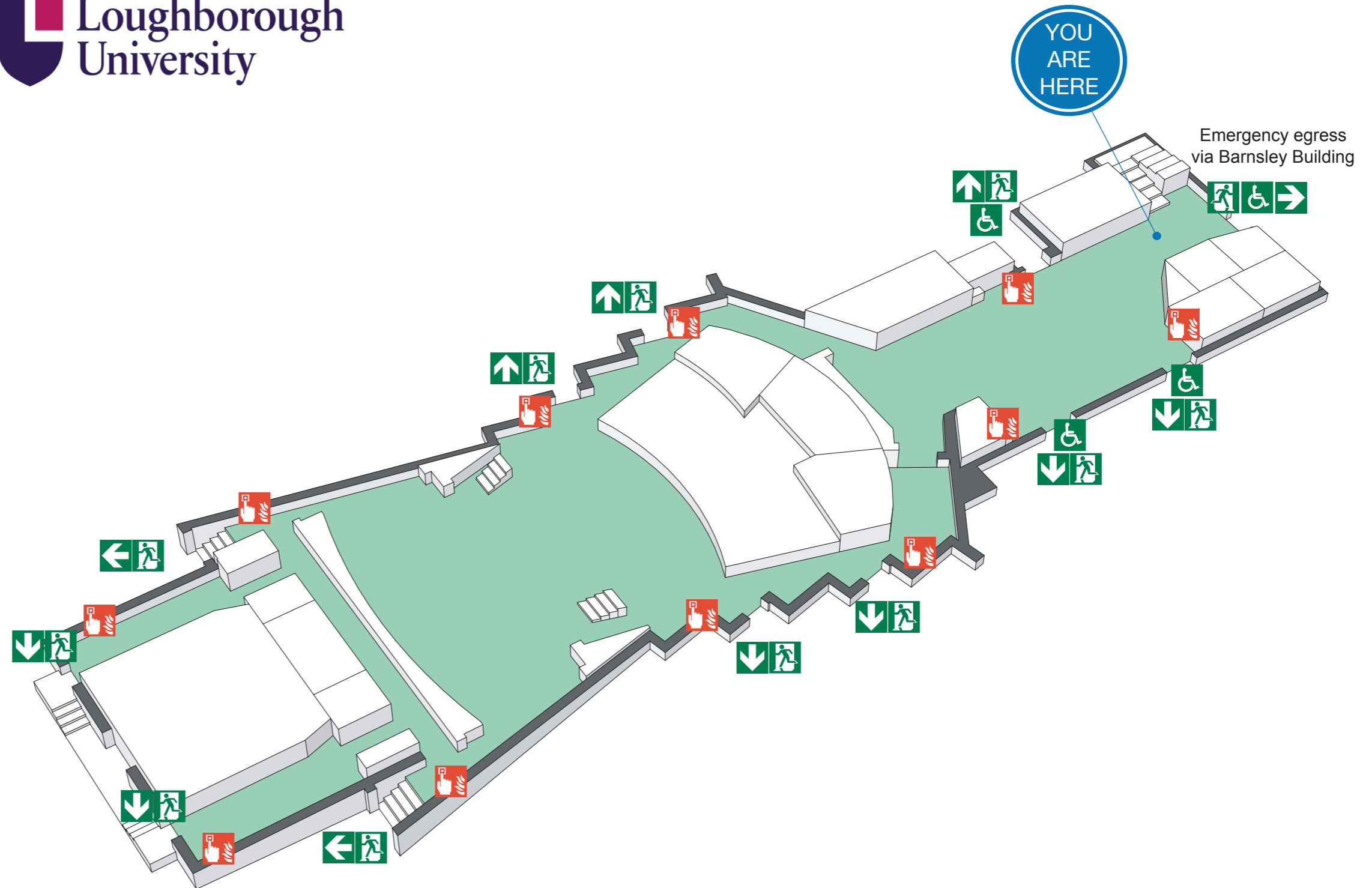
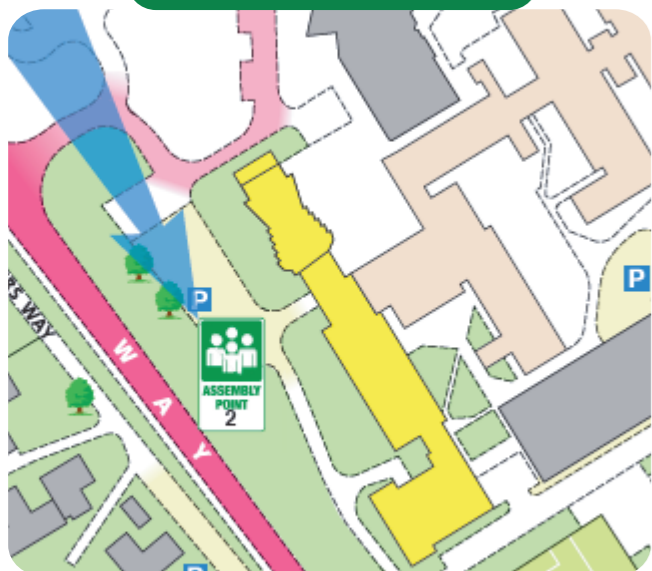
When alarm is given :- do not panic, do not run.



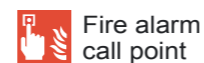
Leave the building following fire emergency exit signs.

DO NOT re-enter the building until told to do so by either the Fire Marshal, Loughborough University Security or the Fire Service.

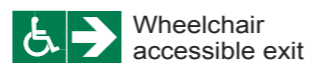
ASSEMBLY POINT



www.silverbeardesign.com



Fire alarm call point



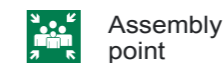
Wheelchair accessible exit



Fire exit



Fire escape route



Assembly point



Safe refuge



Lift

FIRE ESCAPE PLAN

LOUGHBOROUGH UNIVERSITY
COPE AUDITORIUM - GROUND FLOOR



IN CASE OF FIRE



Operate nearest fire alarm call point



Telephone internal emergency number 888 or 0800 526966 if using outside line or mobile phone. In the event of a delay call 999 for the Fire Service giving the correct location of the building.



Do not attack the fire with extinguisher unless trained to do so.

ON HEARING THE ALARM



Evacuate the building and go to the assembly point. Your assembly point is :-

**Opposite main entrance
Assembly point 2**



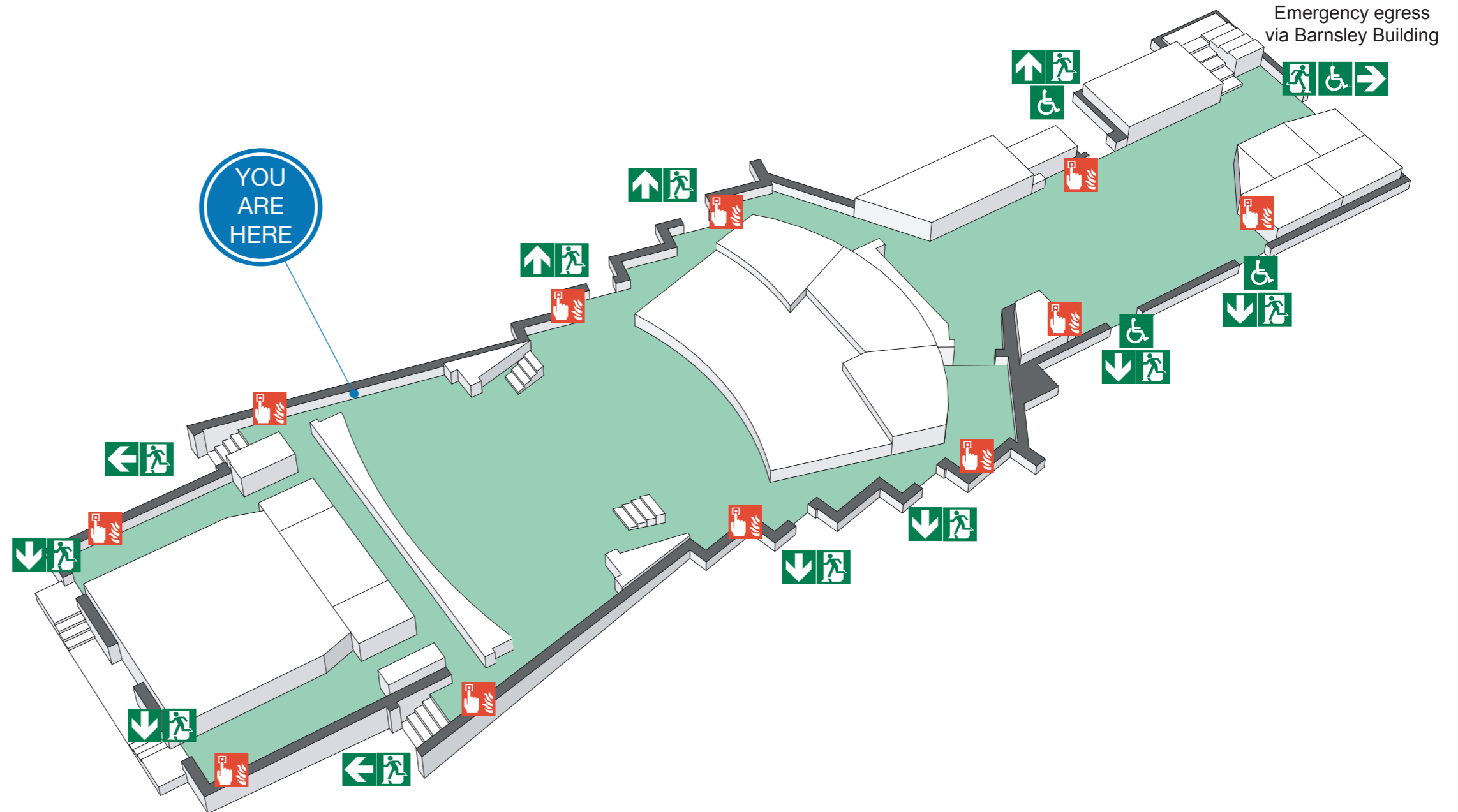
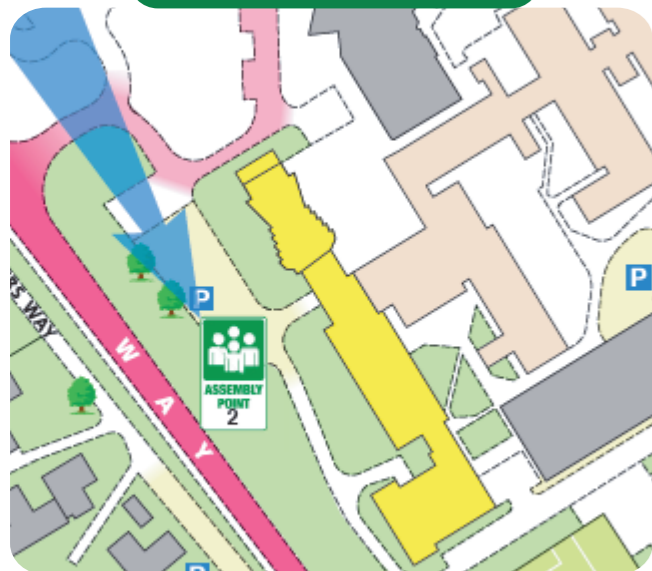
When alarm is given :- do not panic, do not run.



Leave the building following fire emergency exit signs.

DO NOT re-enter the building until told to do so by either the Fire Marshal, Loughborough University Security or the Fire Service.

ASSEMBLY POINT



www.silverbeardesign.com



Fire alarm call point



Wheelchair accessible exit



Fire exit



Fire escape route



Assembly point



Safe refuge



Lift

FIRE ESCAPE PLAN

LOUGHBOROUGH UNIVERSITY
COPE AUDITORIUM - FIRST FLOOR



IN CASE OF FIRE



Operate nearest fire alarm call point



Telephone internal emergency number 888 or 0800 526966 if using outside line or mobile phone. In the event of a delay call 999 for the Fire Service giving the correct location of the building.



Do not attack the fire with extinguisher unless trained to do so.

ON HEARING THE ALARM



Evacuate the building and go to the assembly point. Your assembly point is :-

**Opposite main entrance
Assembly point 2**



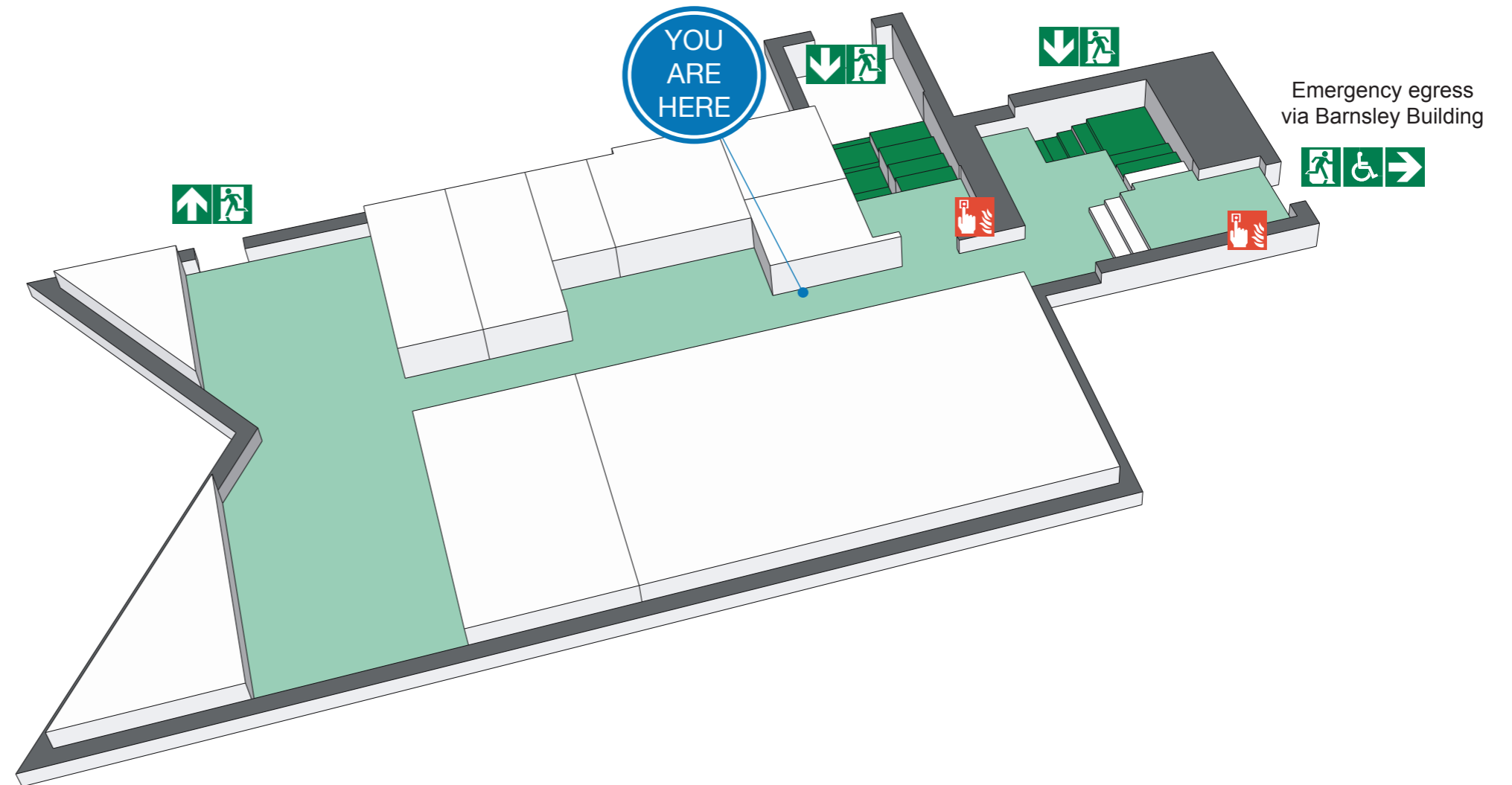
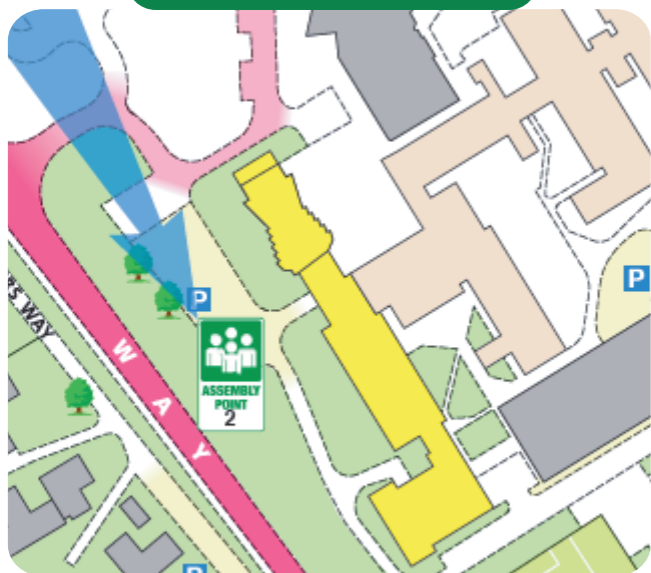
When alarm is given :- do not panic, do not run.



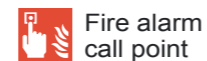
Leave the building following fire emergency exit signs.

DO NOT re-enter the building until told to do so by either the Fire Marshal, Loughborough University Security or the Fire Service.

ASSEMBLY POINT



www.silverbeardesign.com



Fire alarm call point



Wheelchair accessible exit



Fire exit



Fire escape route



Assembly point



Safe refuge



Lift

