

FIRE ESCAPE PLAN

LOUGHBOROUGH UNIVERSITY FIRE INSTRUCTIONS

ANY PERSON DISCOVERING A FIRE



Sound the alarm.
Operate the nearest fire alarm call point.



Telephone Security on the emergency
number 0800 526966.



Do not attack fire with extinguisher
unless trained to do so.

ON HEARING THE ALARM



Evacuate building and go to assembly
point.

Your assembly point is:-

Assembly Point 24

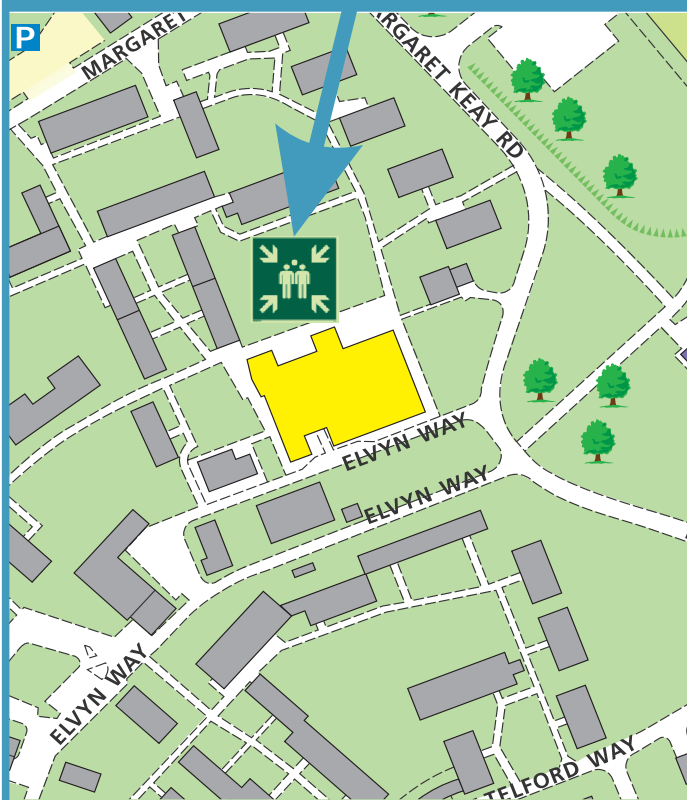


When alarm is given - do not panic, do
not run.
Leave the building following the fire
emergency exit signs.

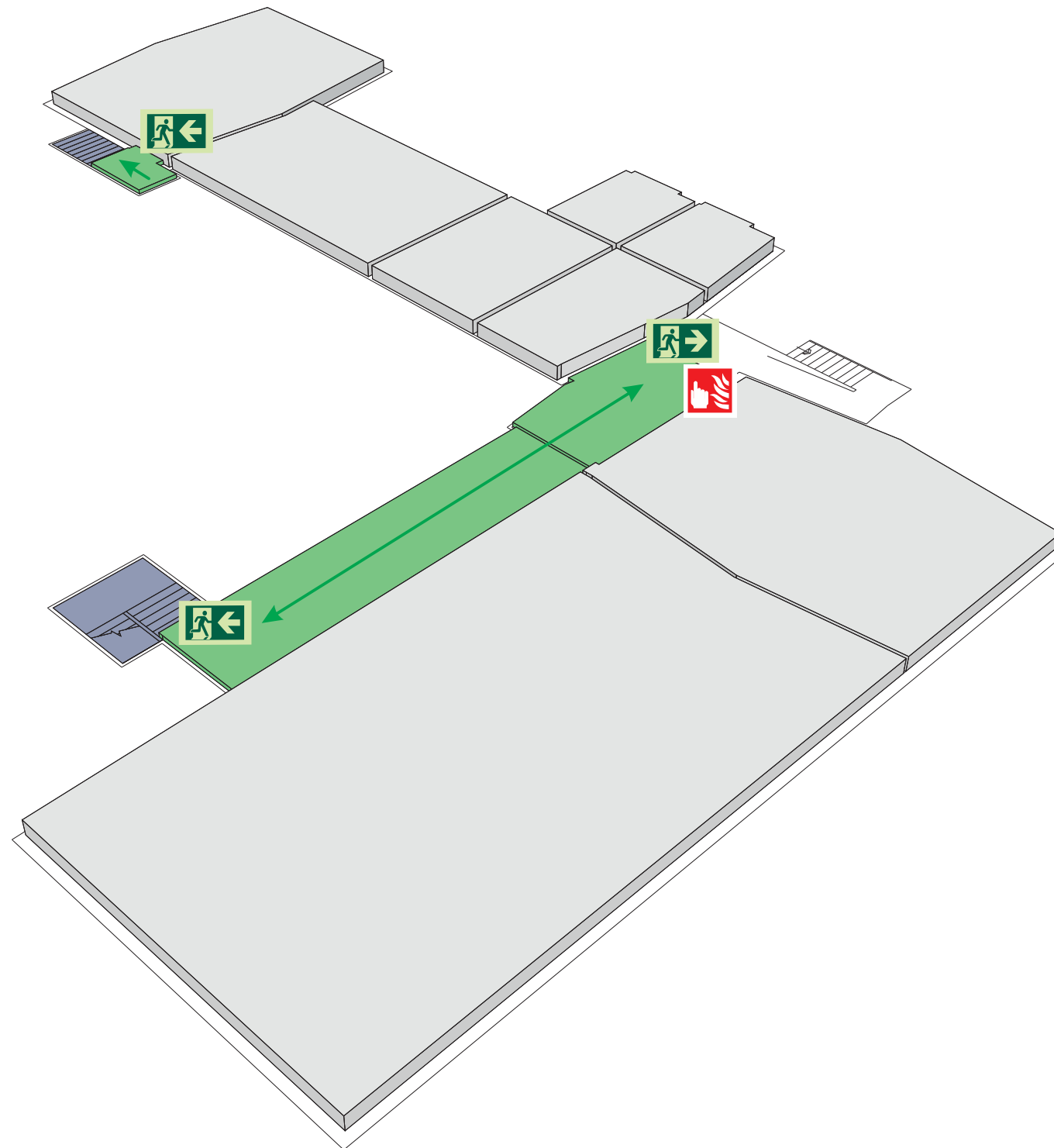


Do not re-enter the building unless told
to do so by the Fire Marshall, Warden or
Fire Service.

ASSEMBLY POINT 24 IS ALLOCATED TO THE
BUILDINGS SHOWN IN YELLOW



Cayley & Rutherford Dining Hall Basement



Fire alarm
Call point



Fire exit



Wheelchair
accessible exit



Fire escape route



Assembly point



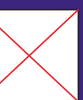
Safe refuge



Evac lift



Evac coms



Non evac coms

Loughborough
University

FIRE ESCAPE PLAN

LOUGHBOROUGH UNIVERSITY FIRE INSTRUCTIONS

ANY PERSON DISCOVERING A FIRE



Sound the alarm.
Operate the nearest fire alarm call point.



Telephone Security on the emergency number 0800 526966.



Do not attack fire with extinguisher unless trained to do so.

ON HEARING THE ALARM



Evacuate building and go to assembly point.
Your assembly point is:-

Assembly Point 24

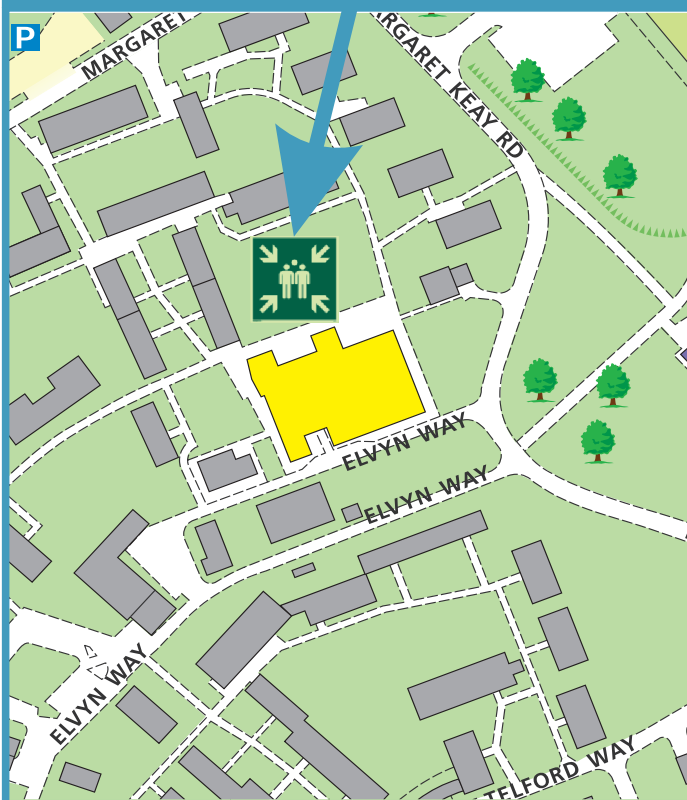


When alarm is given - do not panic, do not run.
Leave the building following the fire emergency exit signs.

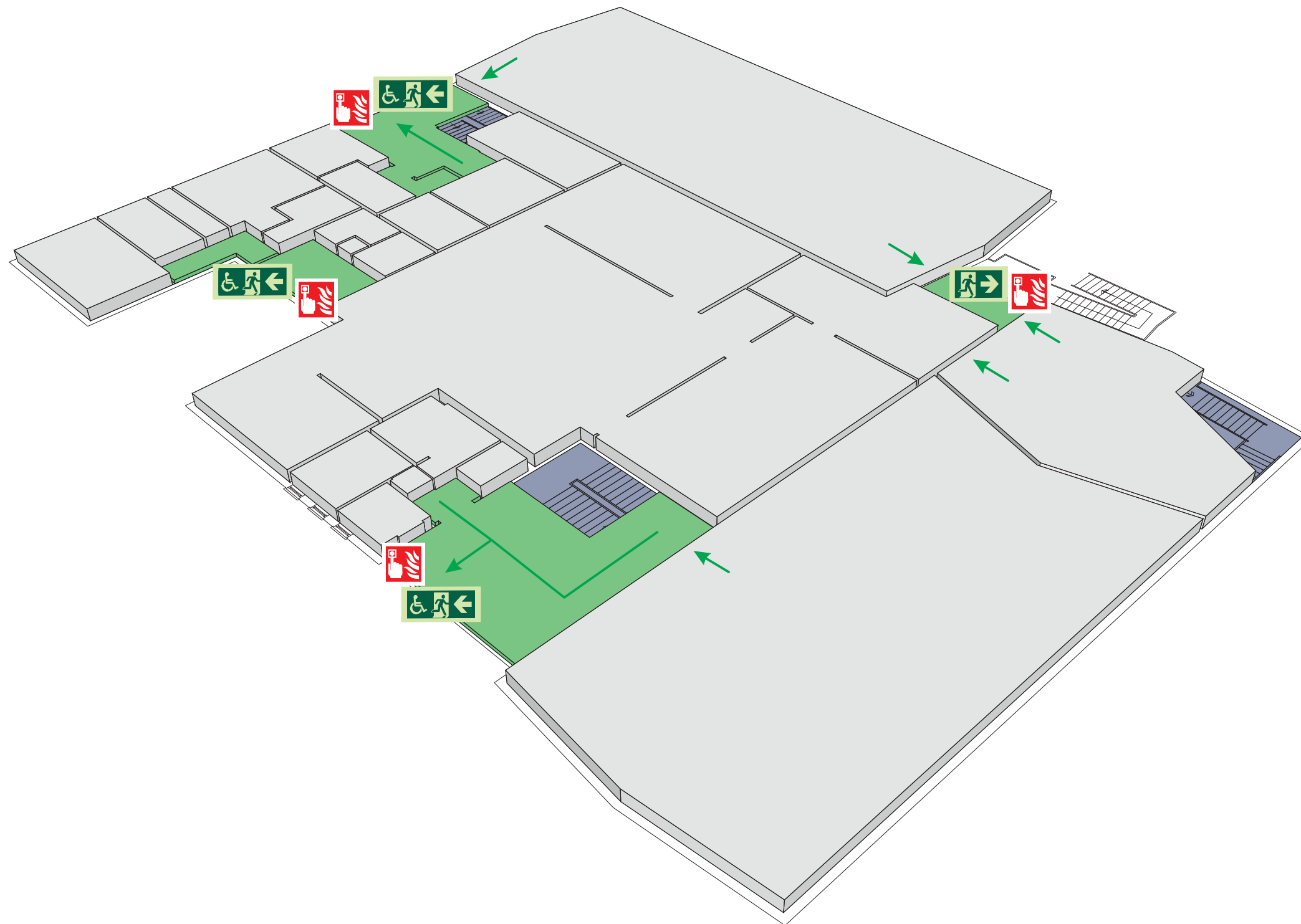


Do not re-enter the building unless told to do so by the Fire Marshall, Warden or Fire Service.

ASSEMBLY POINT 24 IS ALLOCATED TO THE BUILDINGS SHOWN IN YELLOW



Cayley & Rutherford Dining Hall Upper Floor



Fire alarm
Call point



Fire exit



Wheelchair
accessible exit



Fire escape route



Assembly point



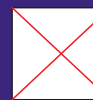
Safe refuge



Evac lift



Evac coms



Non evac coms

Loughborough
University