

## Butler Court Block E

LAST UPDATED December 2016

### **Purpose:**

The purpose of a Generic Emergency Evacuation Plan (GEEP) is to enable visitors to the building with restricted mobility or those who may not be able to evacuate unaided to become familiar with the layout, evacuation procedures, available equipment and communication devices.

If you feel that this document does not provide you with sufficient information or that you require further assistance, please contact the Loughborough University Fire Officer on 01509 222182.

### **The building:**

Butler Court Block E building comprises of 4 floors.  
A single accessible fire exit is available at ground level.

### **Action required on hearing the fire alarm:**

If able, you should leave the building immediately by the nearest fire exit (see attached floor plan) and report to the assigned assembly point for the building.

### **Other recommendations:**

It is recommended that all visitors to the Butler Court Block E building should familiarise themselves with the fire alarm signals and floor layout. Floor plans and evacuation equipment locations have been provided with this document.

### **Equipment provided:**

Accessible fire exits are available on the ground floor of the building.



YOUR ASSEMBLY POINT IS:

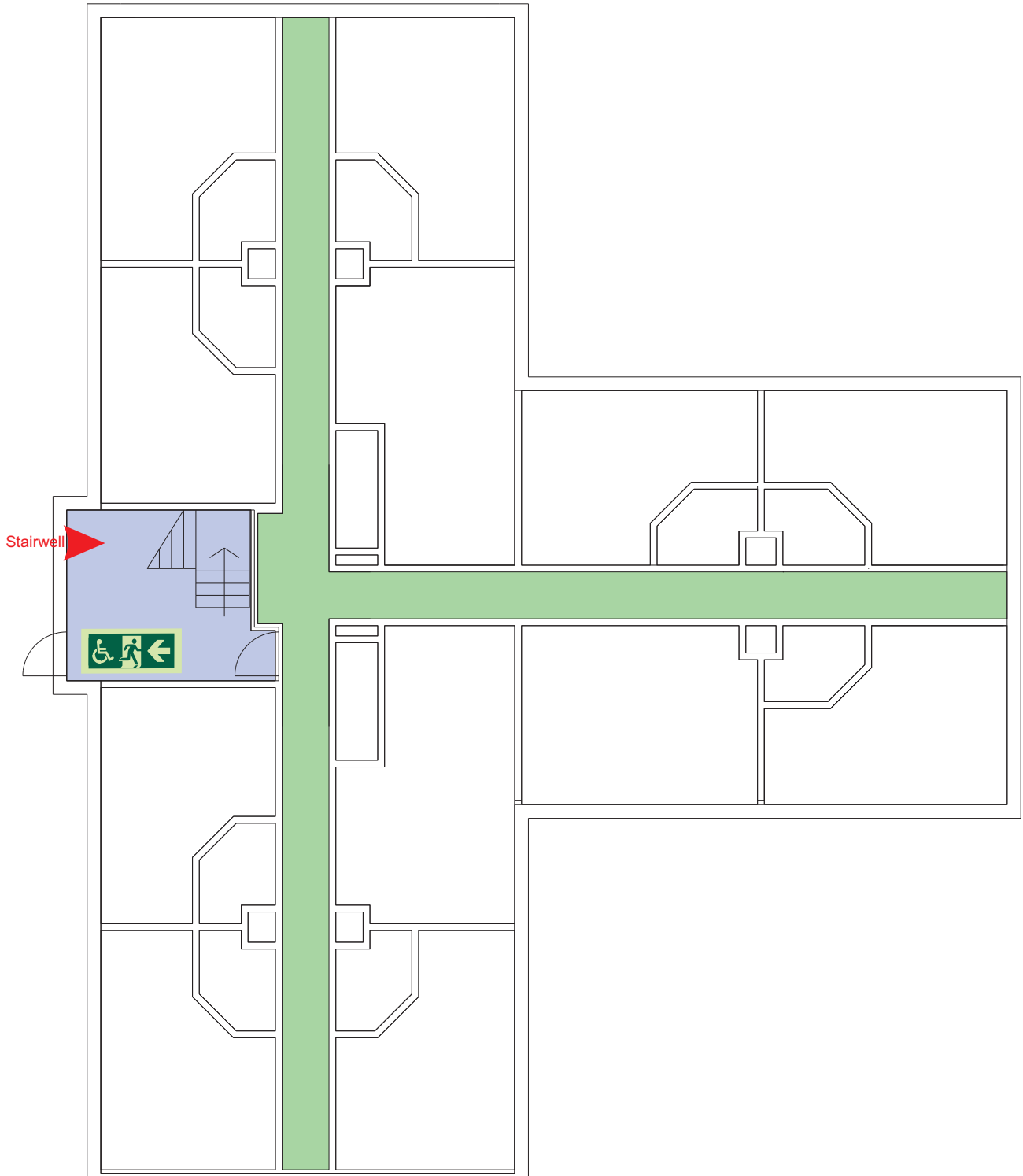
Fire Assembly Point 4

# Generic Emergency Evacuation Plan

Loughborough University

## Butler Court Block E

LAST UPDATED December 2016



Alternative exit via door leading to Block F

Ground



Accessible final exit



Evacuation lift



Safe refuge



Evacuation coms



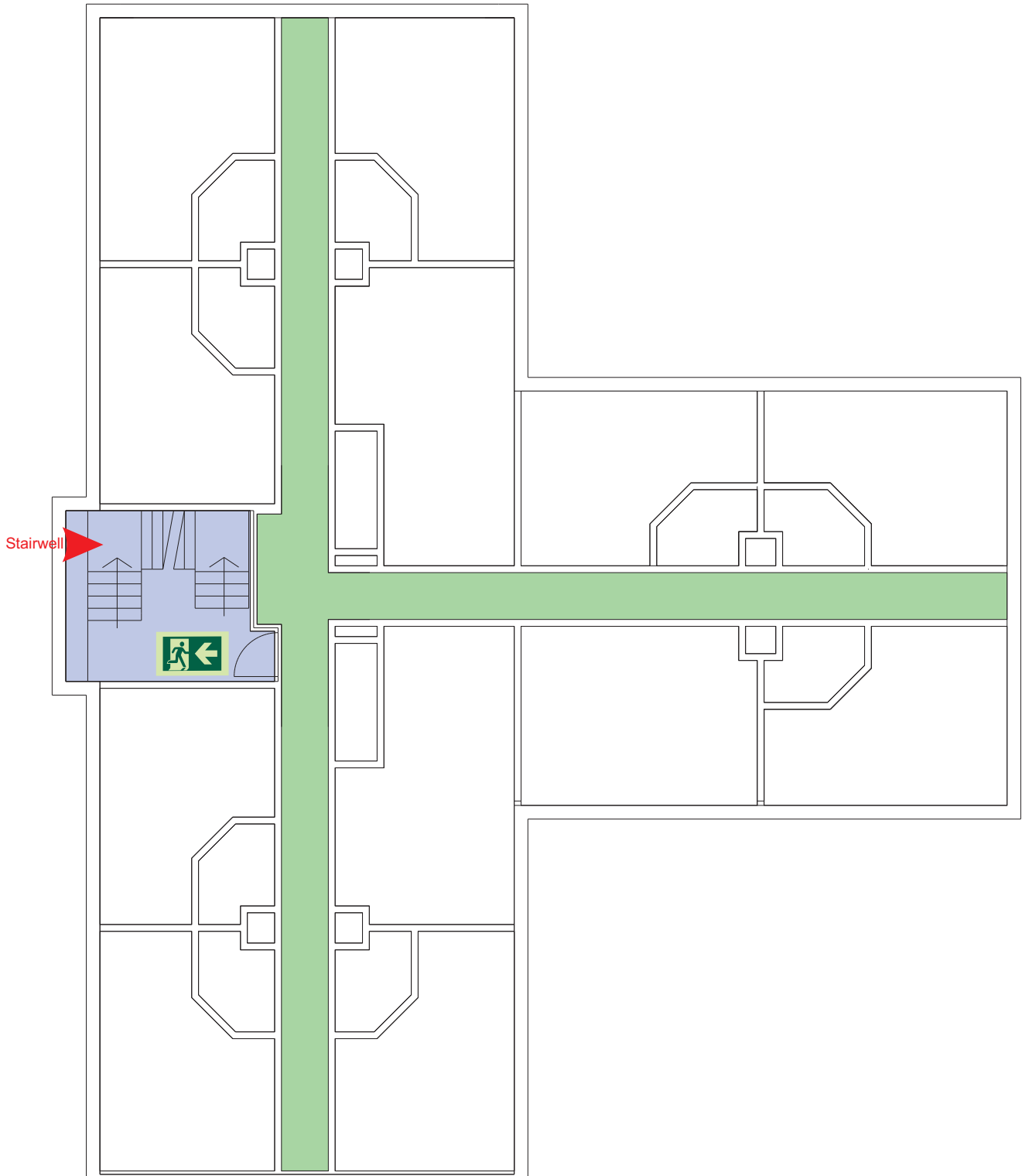
Non evacuation lift

# Generic Emergency Evacuation Plan

Loughborough University

## Butler Court Block E

LAST UPDATED December 2016



Alternative exit via door leading to Block F

First



Accessible final exit



Evacuation lift



Safe refuge



Evacuation coms



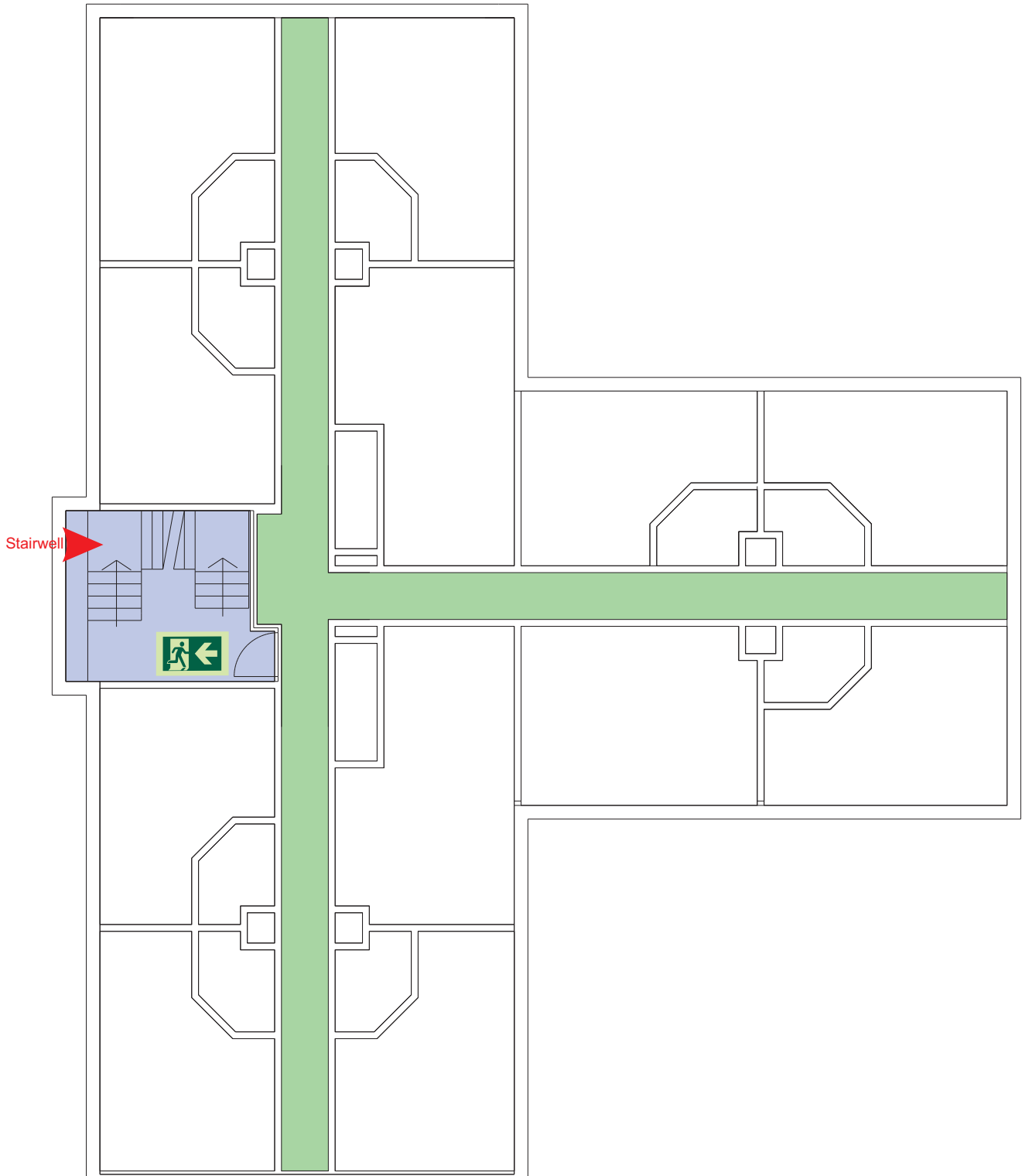
Non evacuation lift

# Generic Emergency Evacuation Plan

Loughborough  
University

## Butler Court Block E

LAST UPDATED December 2016



Alternative exit via  
door leading to Block F

Second



Accessible final exit



Evacuation lift



Safe refuge



Evacuation  
coms



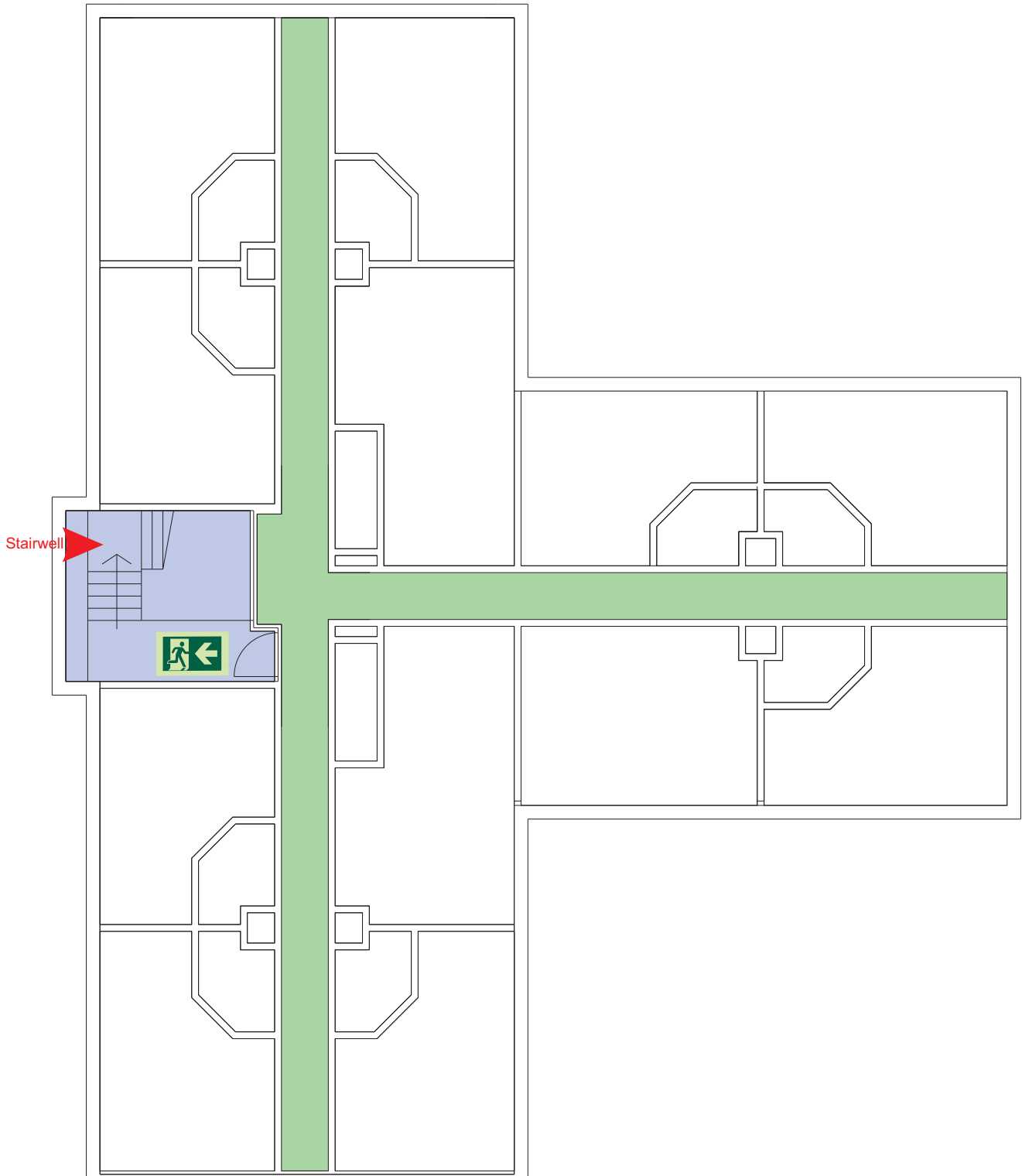
Non  
evacuation  
lift

# Generic Emergency Evacuation Plan

Loughborough University

## Butler Court Block E

LAST UPDATED December 2016



Alternative exit via door leading to Block F

Third



Accessible final exit



Evacuation lift



Safe refuge



Evacuation coms



Non evacuation lift