

# FIRE ESCAPE PLAN

## LOUGHBOROUGH UNIVERSITY FIRE INSTRUCTIONS

### ANY PERSON DISCOVERING A FIRE



Sound the alarm.  
Operate the nearest fire alarm call point.



Telephone Security on the emergency  
number 0800 526966.



Do not attack fire with extinguisher  
unless trained to do so.

### ON HEARING THE ALARM



Evacuate building and go to assembly  
point.  
Your assembly point is:-

**Assembly Point 4**

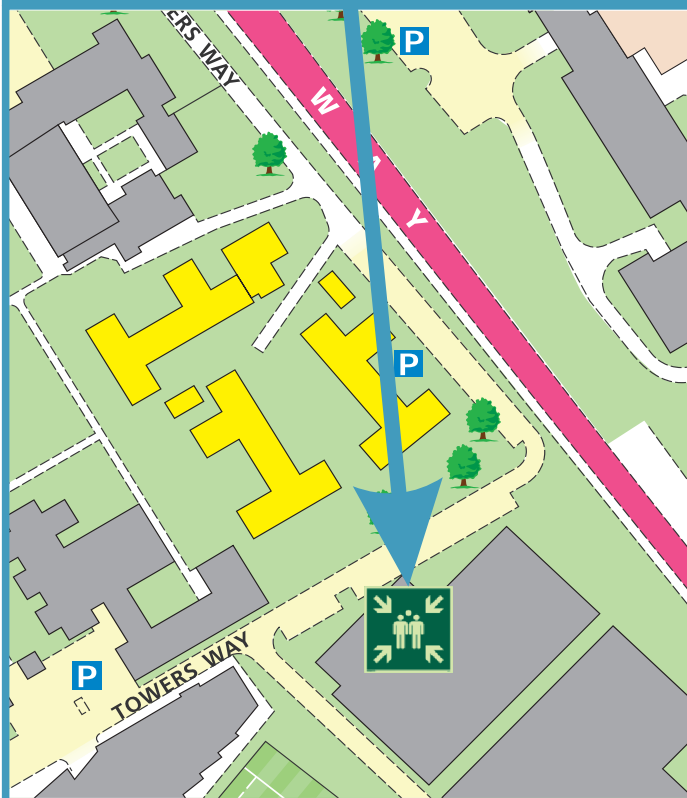


When alarm is given - do not panic, do  
not run.  
Leave the building following the fire  
emergency exit signs.

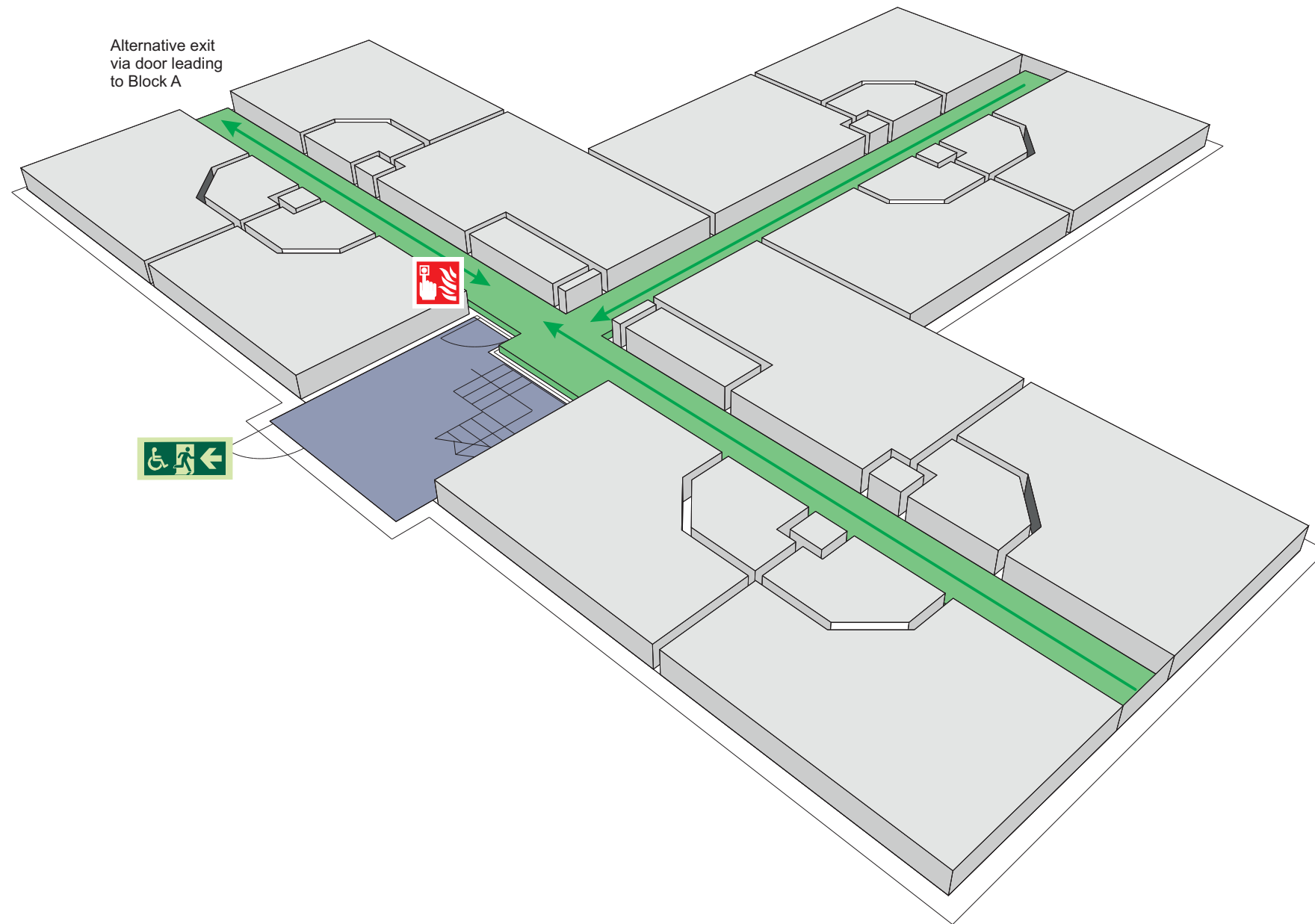


Do not re-enter the building unless told  
to do so by the Fire Marshall, Warden or  
Fire Service.

### ASSEMBLY POINT 4 IS ALLOCATED TO THE BUILDINGS SHOWN IN YELLOW



## Butler Court Block B Ground Floor



Fire alarm  
Call point



Fire exit



Wheelchair  
accessible exit



Fire escape route



Assembly point



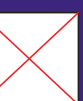
Safe refuge



Evac lift



Evac coms



Non evac coms

Loughborough  
University

# FIRE ESCAPE PLAN

## LOUGHBOROUGH UNIVERSITY FIRE INSTRUCTIONS

### ANY PERSON DISCOVERING A FIRE



Sound the alarm.  
Operate the nearest fire alarm call point.



Telephone Security on the emergency  
number 0800 526966.



Do not attack fire with extinguisher  
unless trained to do so.

### ON HEARING THE ALARM



Evacuate building and go to assembly  
point.  
Your assembly point is:-

**Assembly Point 4**

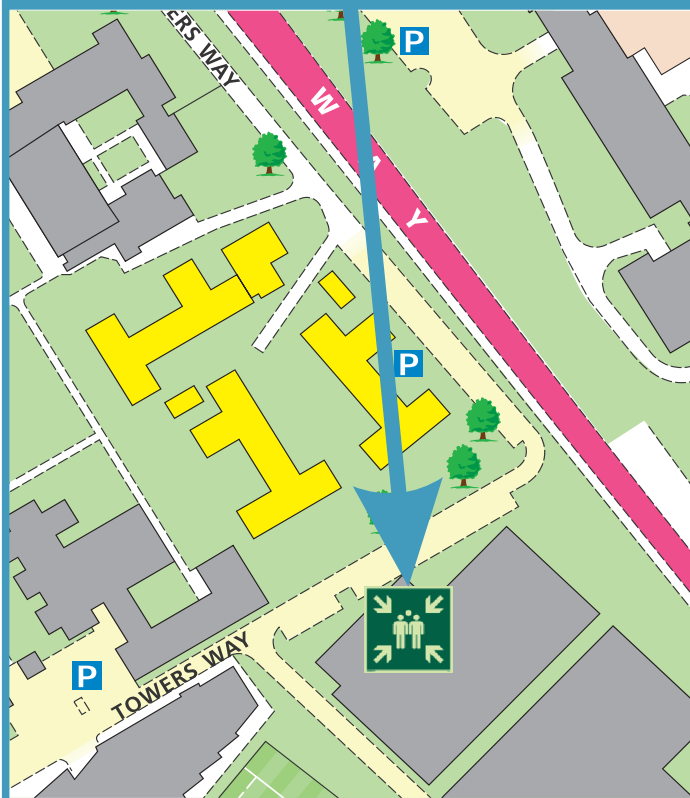


When alarm is given - do not panic, do  
not run.  
Leave the building following the fire  
emergency exit signs.

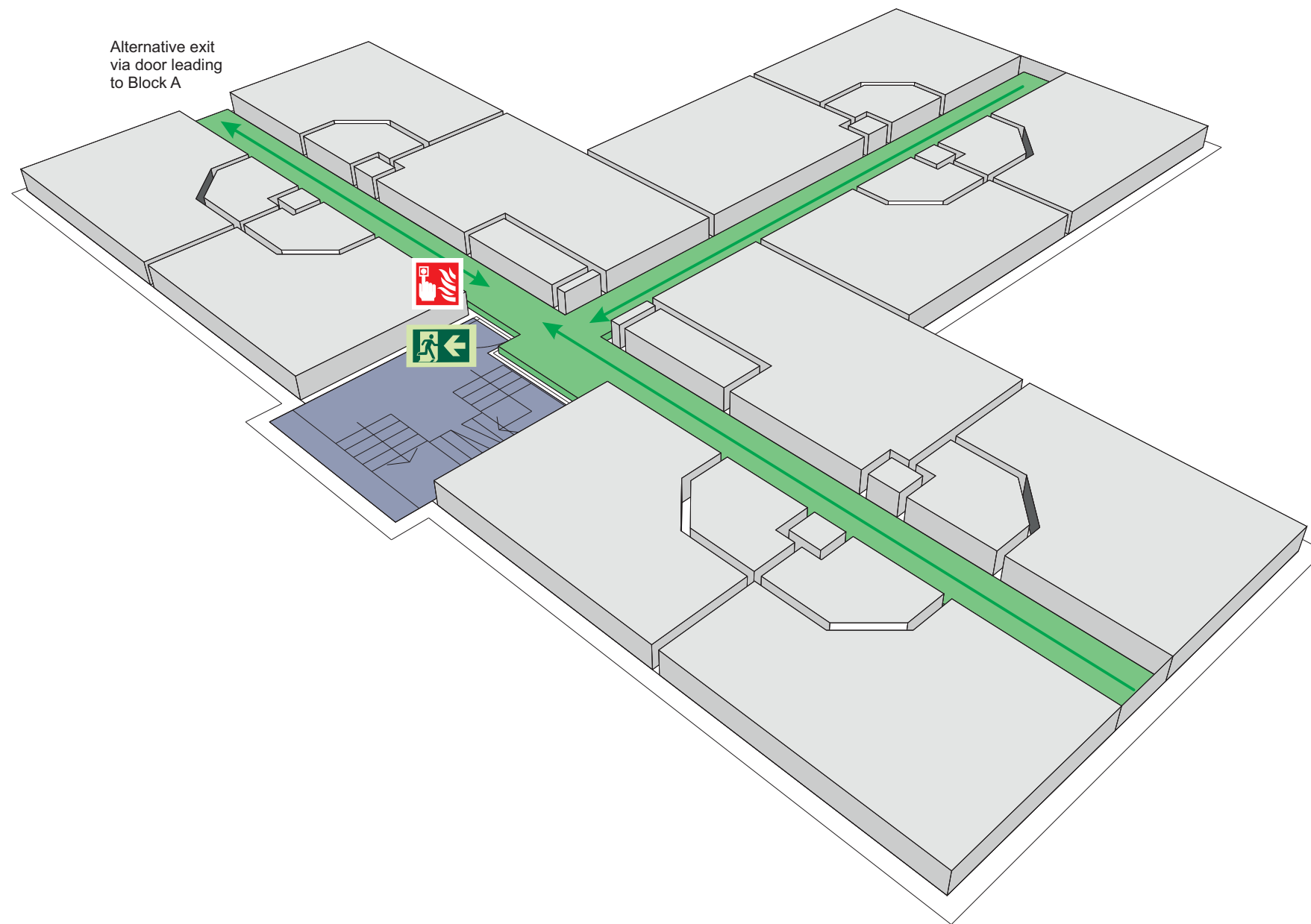


Do not re-enter the building unless told  
to do so by the Fire Marshall, Warden or  
Fire Service.

### ASSEMBLY POINT 4 IS ALLOCATED TO THE BUILDINGS SHOWN IN YELLOW



## Butler Court Block B First Floor



Fire alarm  
Call point



Fire exit



Wheelchair  
accessible exit



Fire escape route



Assembly point



Safe refuge



Evac lift



Evac coms



Non evac coms

Loughborough  
University

# FIRE ESCAPE PLAN

## LOUGHBOROUGH UNIVERSITY FIRE INSTRUCTIONS

### ANY PERSON DISCOVERING A FIRE



Sound the alarm.  
Operate the nearest fire alarm call point.



Telephone Security on the emergency  
number 0800 526966.



Do not attack fire with extinguisher  
unless trained to do so.

### ON HEARING THE ALARM



Evacuate building and go to assembly  
point.  
Your assembly point is:-

**Assembly Point 4**

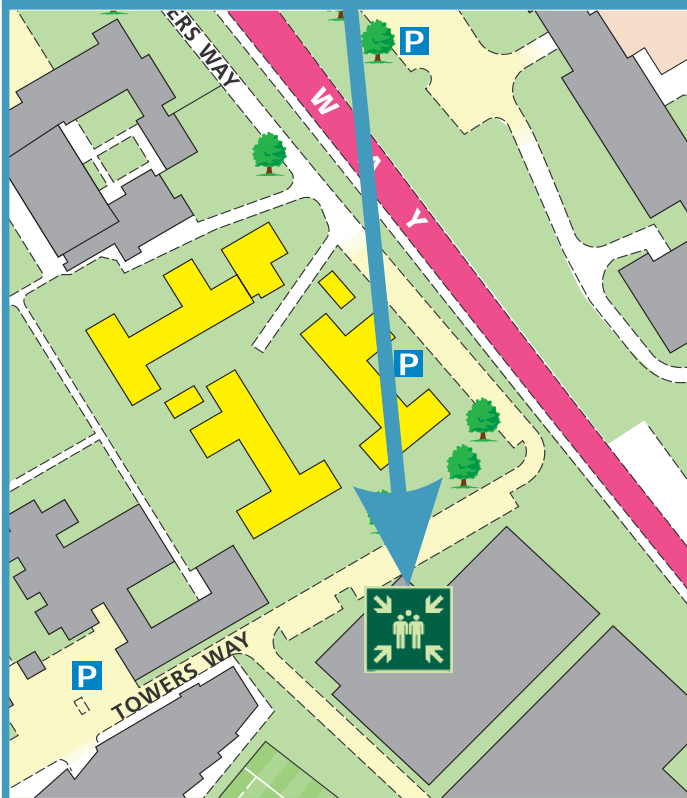


When alarm is given - do not panic, do  
not run.  
Leave the building following the fire  
emergency exit signs.

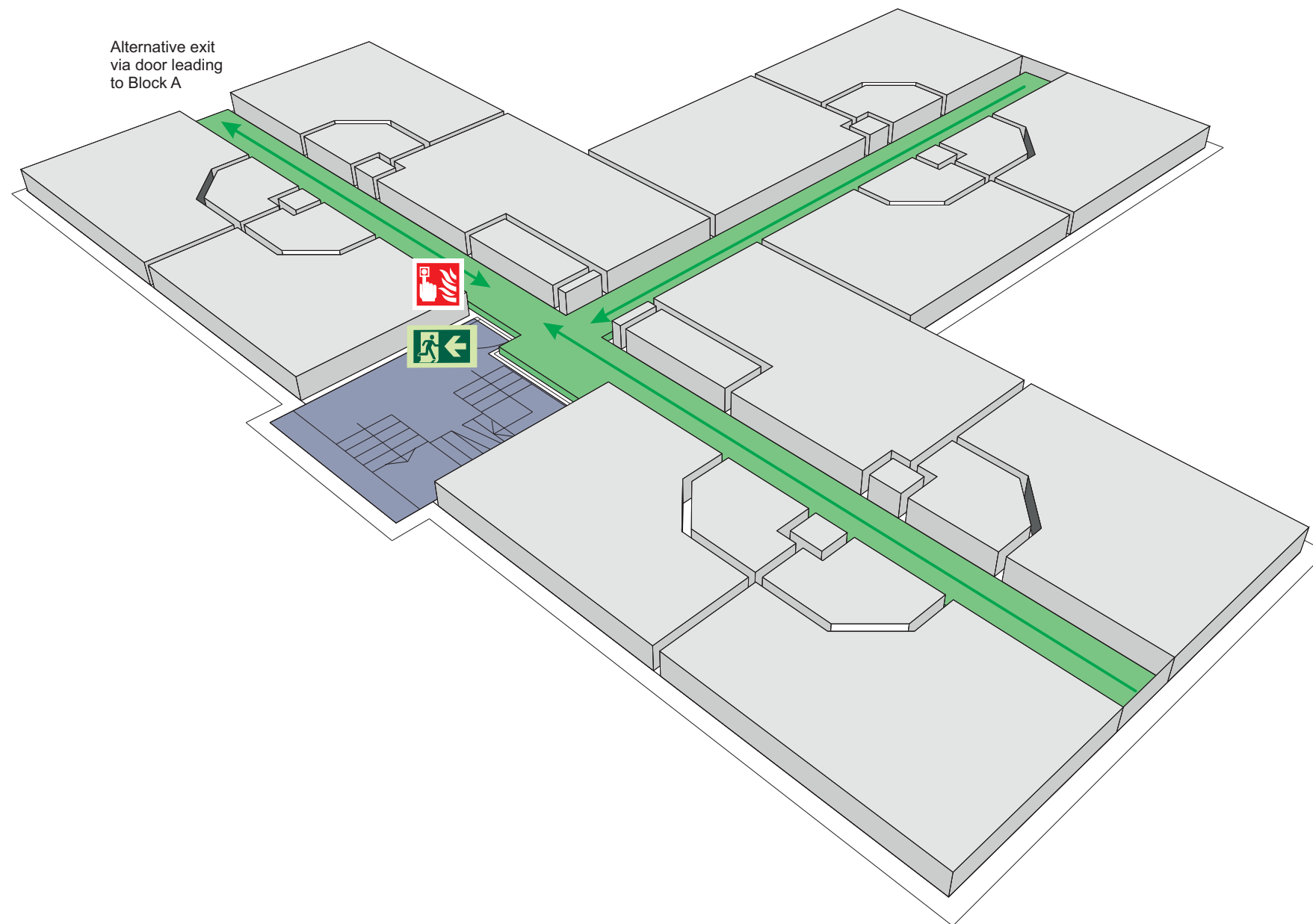


Do not re-enter the building unless told  
to do so by the Fire Marshall, Warden or  
Fire Service.

### ASSEMBLY POINT 4 IS ALLOCATED TO THE BUILDINGS SHOWN IN YELLOW



## Butler Court Block B Second Floor



Fire alarm  
Call point



Fire exit



Wheelchair  
accessible exit



Fire escape route



Assembly point



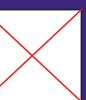
Safe refuge



Evac lift



Evac coms



Non evac coms

Loughborough  
University

# FIRE ESCAPE PLAN

## LOUGHBOROUGH UNIVERSITY FIRE INSTRUCTIONS

### ANY PERSON DISCOVERING A FIRE



Sound the alarm.  
Operate the nearest fire alarm call point.



Telephone Security on the emergency  
number 0800 526966.



Do not attack fire with extinguisher  
unless trained to do so.

### ON HEARING THE ALARM



Evacuate building and go to assembly  
point.  
Your assembly point is:-

**Assembly Point 4**

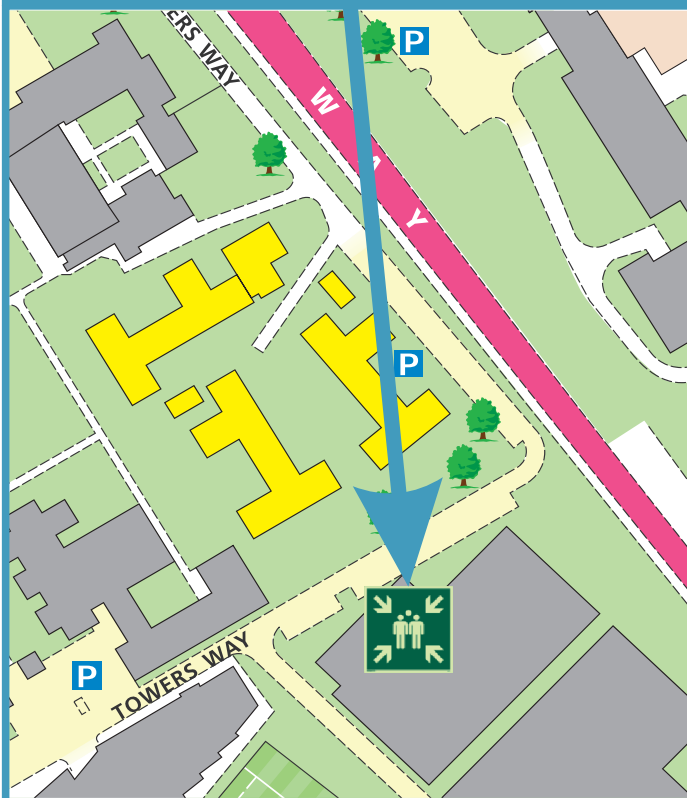


When alarm is given - do not panic, do  
not run.  
Leave the building following the fire  
emergency exit signs.

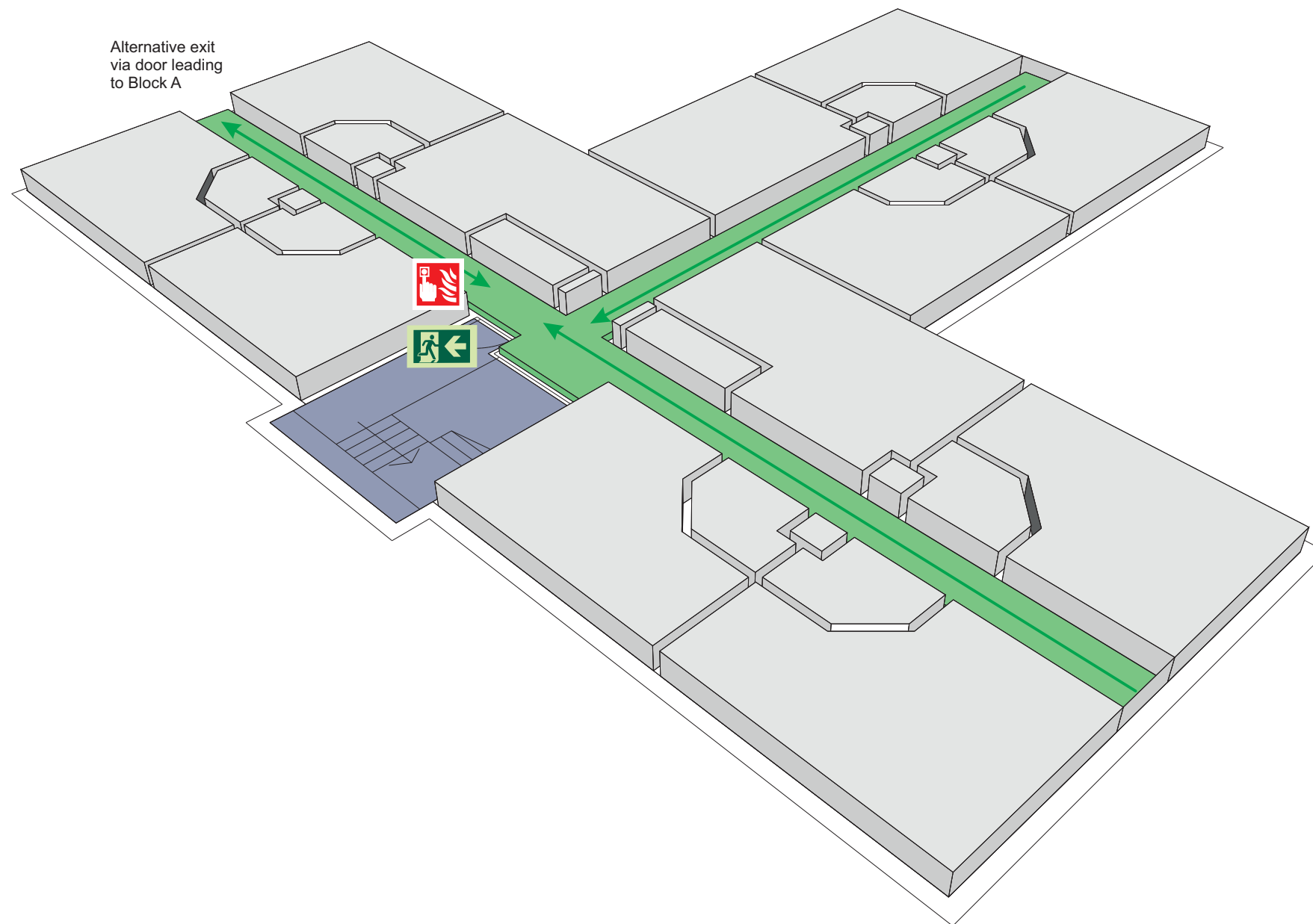


Do not re-enter the building unless told  
to do so by the Fire Marshall, Warden or  
Fire Service.

### ASSEMBLY POINT 4 IS ALLOCATED TO THE BUILDINGS SHOWN IN YELLOW



## Butler Court Block B Third Floor



Fire alarm  
Call point



Fire exit



Wheelchair  
accessible exit



Fire escape route



Assembly point



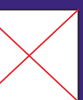
Safe refuge



Evac lift



Evac coms



Non evac coms

Loughborough  
University