

BROCKINGTON EXTENSION BUILDING

LAST UPDATED 13TH JUNE 2013

Purpose:

The purpose of a Generic Emergency Evacuation Plan (GEEP) is to enable visitors to the building with restricted mobility or those who may not be able to evacuate unaided to become familiar with the layout, evacuation procedures, available equipment and communication devices.

If you feel that this document does not provide you with sufficient information or that you require further assistance, please contact the Loughborough University Fire Officer on 01509 222182.

The building:

The Brockington Extension is comprised of 5 floors. All floors are accessible via the lift in the main entrance. Accessible exits are available on ground level of the building. Emergency egress is also possible through the Brockington Extension and Schofield buildings.

The first floor has an emergency exit through to the Brockington building.

First and second floors have emergency exit access through to the Wavy Top building.

The third and fourth floors have safe refuge areas at each end of the main corridor where a disabled emergency call point is also available.

Action required on hearing the fire alarm:

If able, you should leave the building immediately by the nearest fire exit (see attached floor plan) and report to the assigned assembly point for the building.

If you are unable to evacuate the building unaided, please proceed to one of the safe refuges located in each stair core (see attached floor plan).

A disabled emergency call point is available in each safe refuge. Use this to contact the security team and notify them of your location, details of which are printed on the front of the panel. Full details on how to use the emergency call point are also provided in the safe refuge.

Other recommendations:

It is recommended that all visitors to the Mechanical Engineering building should familiarise themselves with the fire alarm signals and floor layout of the building. Floor plans and fire equipment locations have been provided with this document.

Equipment provided:

In addition to the general alarm, two safe refuge areas are available on the third and fourth floors. A disabled emergency call point that links directly to security is located in each of the safe refuge areas.

Emergency egress is also possible through the corridors to the Wavy Top or Brockington buildings.

Accessible fire exits are available on the ground floor of the building (see attached plans), and these are to be used as primary exit from the main stair cores.

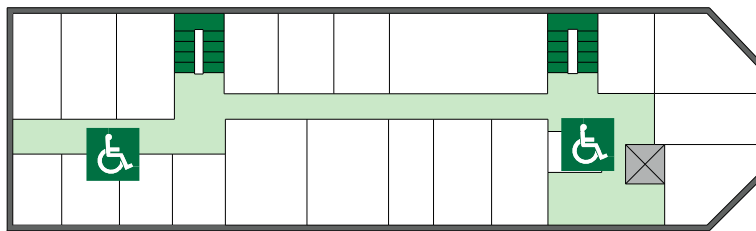


YOUR ASSEMBLY POINT IS:

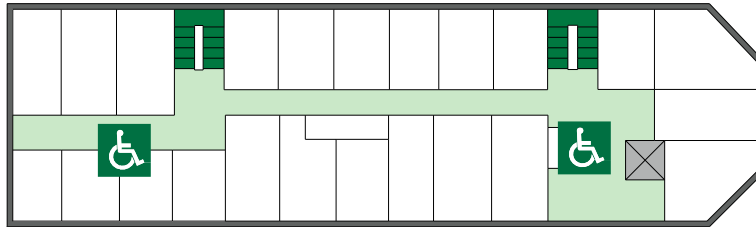
Fire assembly point 12 - Outside Schofield Building

BROCKINGTON EXTENSION BUILDING

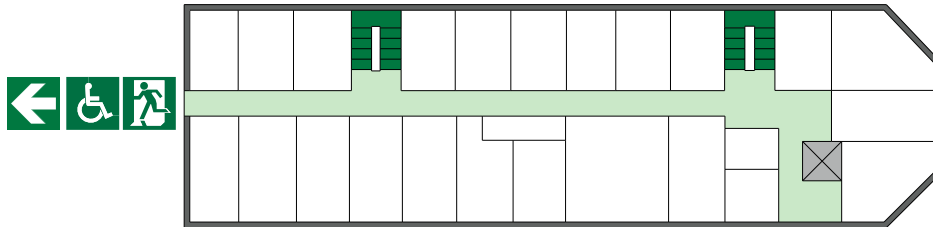
Fourth



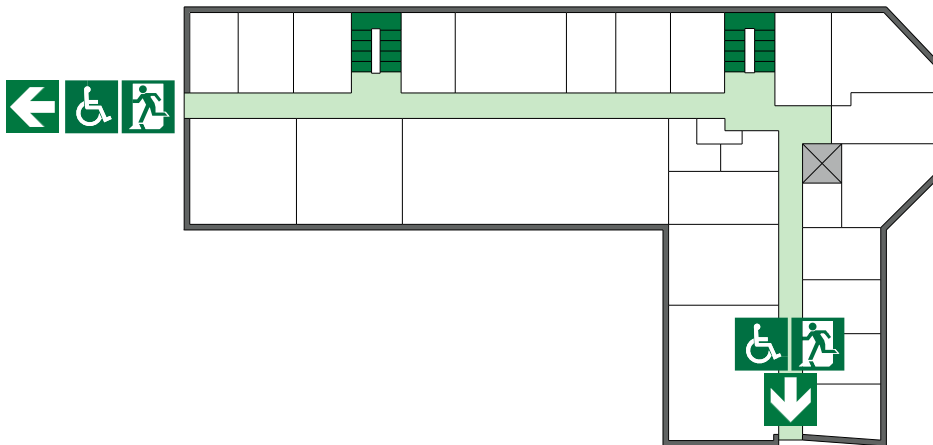
Third



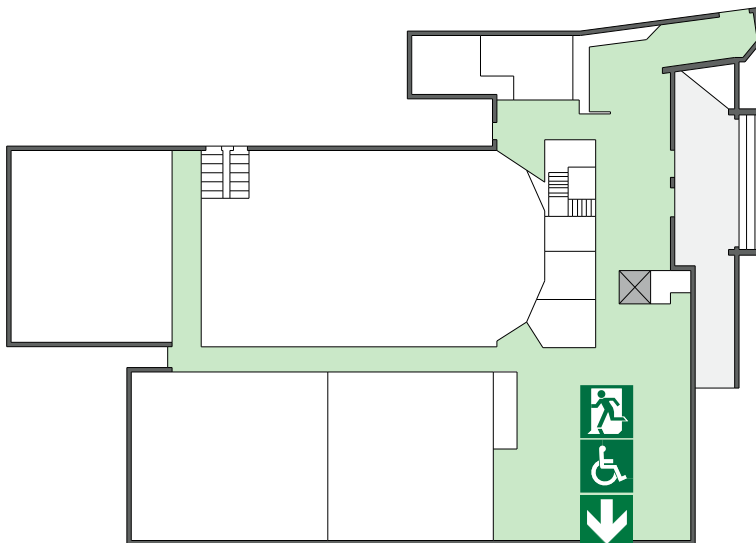
Second



First



Ground



Accessible final exit



Alternate emergency egress via Wolfson Building



Safe refuge