

S BUILDING

LAST UPDATED 13TH JUNE 2013

Purpose:

The purpose of a Generic Emergency Evacuation Plan (GEEP) is to enable visitors to the building with restricted mobility or those who may not be able to evacuate unaided to become familiar with the layout, evacuation procedures, available equipment and communication devices.

If you feel that this document does not provide you with sufficient information or that you require further assistance, please contact the Loughborough University Fire Officer on 01509 222182.

The building:

The S building comprises of 3 floors. The ground and first floors have entrances from ground level. First floor is accessible by using the central lift or stairs.

Ground and first floor have accessible emergency exits that lead to the fire assembly point.

The first floor has six fire exits accessible via the central corridor, three of which are nominated safe refuge areas and provide a disabled emergency call point which links directly to security

The second floor has 5 fire exits, each of which is also a nominated safe refuge area.

Action required on hearing the fire alarm:

If able, you should leave the building immediately by the nearest fire exit (see attached floor plan) and report to the assigned assembly point for the building.

If you are unable to evacuate the building unaided, please proceed to the safe refuges located in the stair cores (see attached floor plan).

A disabled emergency call point is available in each safe refuge. Use this to contact the security team and notify them of your location, details of which are printed on the front of the panel. Full details on how to use the emergency call point are also provided in the safe refuge.

Other recommendations:

It is recommended that all visitors to the S building should familiarise themselves with the fire alarm signals and floor layout of the building. Floor plans and fire equipment locations have been provided with this document.

Equipment provided:

In addition to the general alarm, 3 safe refuge areas are available on first floor and 5 safe refuge areas are available on the second floor. A disabled emergency call point that links directly to security is located in each of the safe refuge areas.

Ground floor has two accessible fire exits located at the main building entrance and the end of the building (see attached plans).

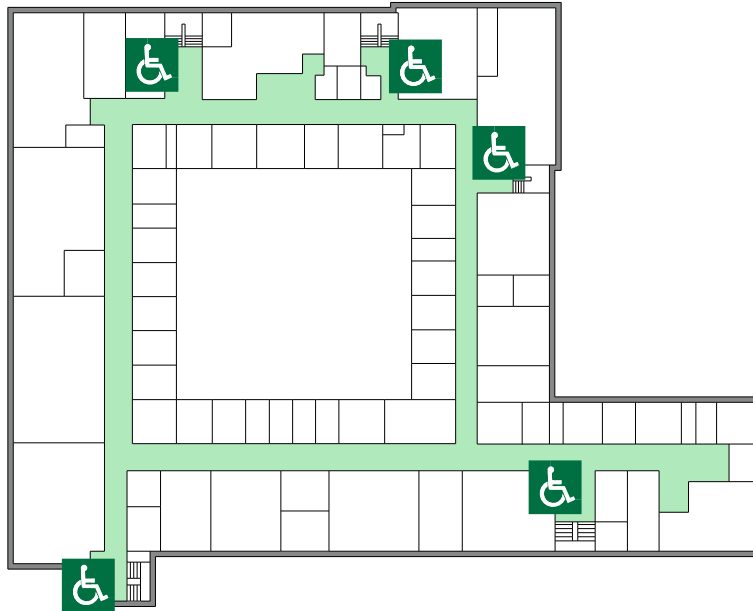


YOUR ASSEMBLY POINT IS:

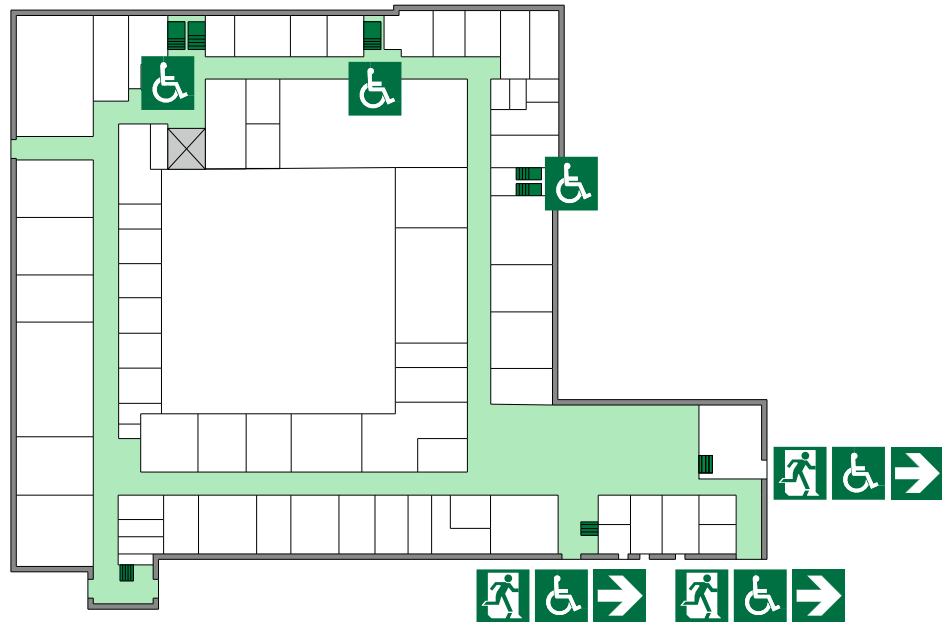
Fire assembly point 17 - Car park by Margaret Keay Road

S BUILDING

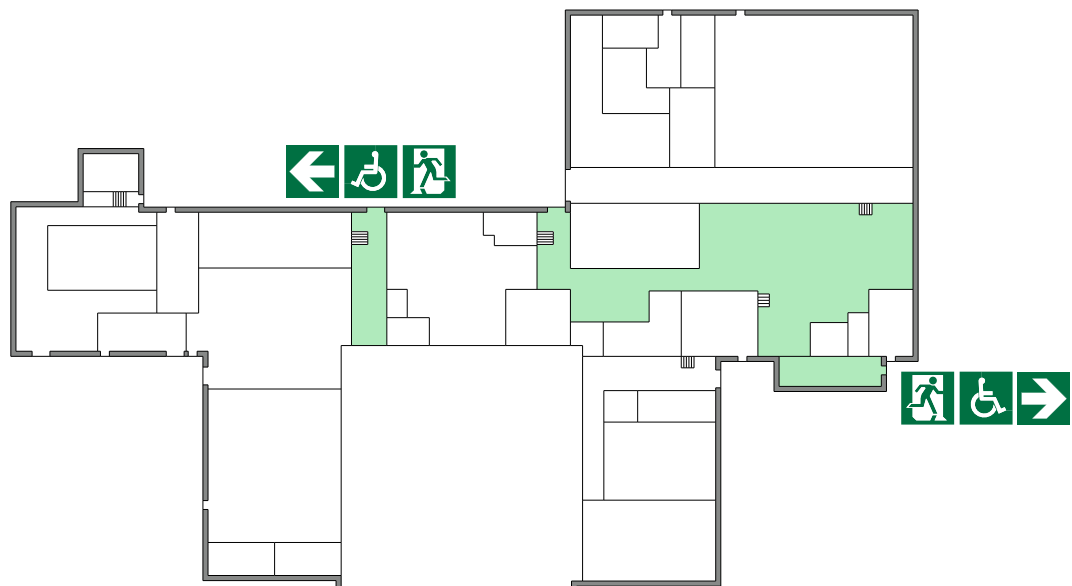
Second



First



Ground



Accessible final exit



Safe refuge