

MECHANICAL ENGINEERING BUILDING

LAST UPDATED 13TH JUNE 2013

Purpose:

The purpose of a Generic Emergency Evacuation Plan (GEEP) is to enable visitors to the building with restricted mobility or those who may not be able to evacuate unaided to become familiar with the layout, evacuation procedures, available equipment and communication devices.

If you feel that this document does not provide you with sufficient information or that you require further assistance, please contact the Loughborough University Fire Officer on 01509 222182.

The building:

The Mechanical Engineering building is comprised of 3 floors. All floors are accessible via the lift.

Ground floor has accessible emergency exits as well as a alternate emergency egress through Wolfson building.

The first and second floors have two stair cores, both of which are nominated safe refuge areas and provide a disabled emergency call point which links directly to security.

Alternate emergency egress is also available by using the connecting walkway through to Wolfson building on first and second floors.

Action required on hearing the fire alarm:

If able, you should leave the building immediately by the nearest fire exit (see attached floor plan) and report to the assigned assembly point for the building.

If you are unable to evacuate the building unaided, please proceed to one of the safe refuges located in each stair core (see attached floor plan).

A disabled emergency call point is available in each safe refuge. Use this to contact the security team and notify them of your location, details of which are printed on the front of the panel. Full details on how to use the emergency call point are also provided in the safe refuge.

Other recommendations:

It is recommended that all visitors to the Mechanical Engineering building should familiarise themselves with the fire alarm signals and floor layout of the building. Floor plans and fire equipment locations have been provided with this document.

Equipment provided:

In addition to the general alarm, four safe refuge areas are available on the first and second floors. A disabled emergency call point that links directly to security is located in each of the safe refuge areas.

Accessible fire exits are available on the ground and first floor of the building (see attached plans), and these are to be used as primary exit from the main stair cores.

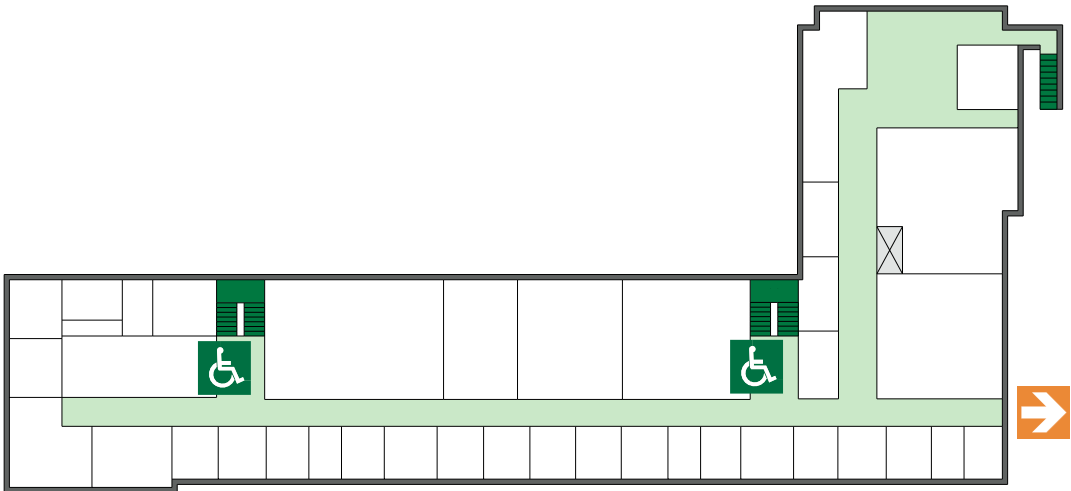
Alternate emergency egress is also available through the Wolfson building.



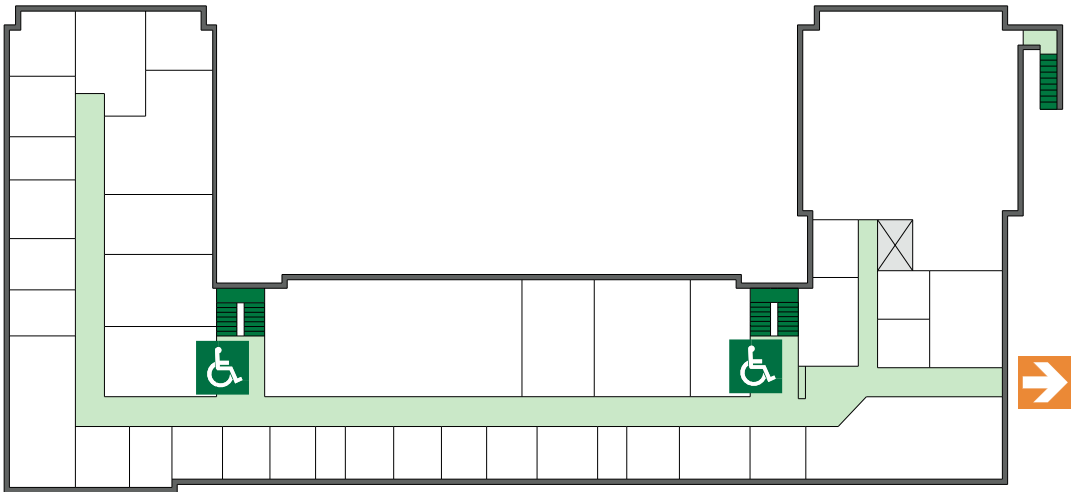
YOUR ASSEMBLY POINT IS:

Fire assembly point 28 - By Village Restaurant

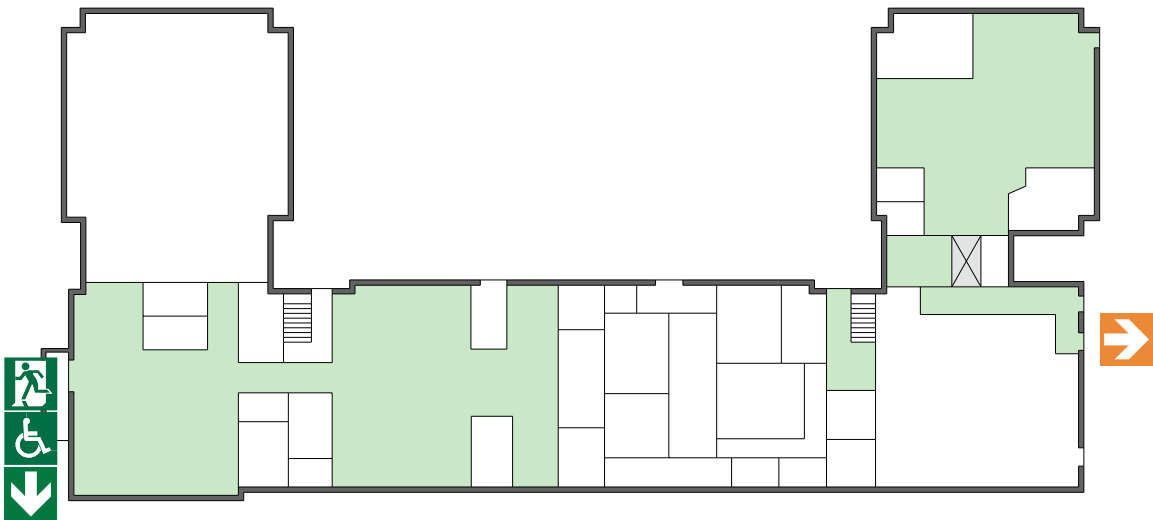
Second



First



Ground



Accessible final exit



Alternate emergency egress
via Wolfson Building



Safe refuge



IN CASE OF FIRE



Operate nearest fire alarm call point



Telephone internal emergency number 888 or 0800 526966 if using outside line or mobile phone. In the event of a delay call 999 for the Fire Service giving the correct location of the building.



Do not attack the fire with extinguisher unless trained to do so.

ON HEARING THE ALARM



Evacuate the building and go to the assembly point. Your assembly point is :-

**By Village Restaurant
Assembly point 28**



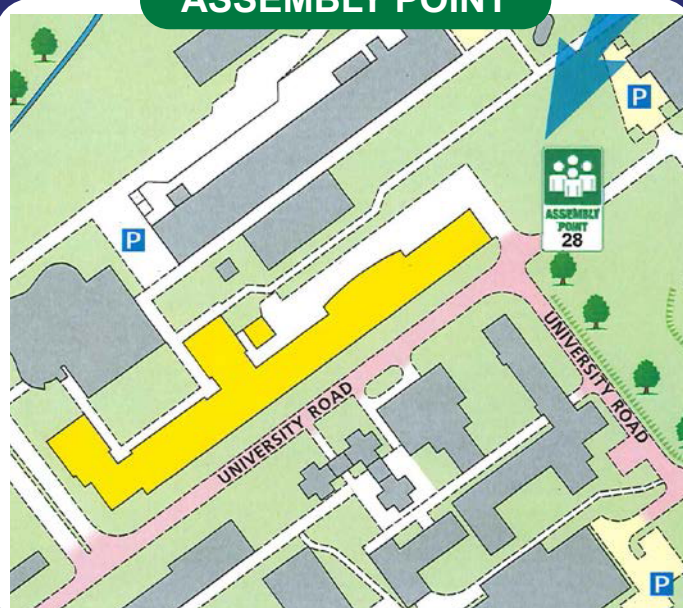
When alarm is given :- do not panic, do not run.



Leave the building following fire emergency exit signs.

DO NOT re-enter the building until told to do so by either the Fire Marshal, Loughborough University Security or the Fire Service.

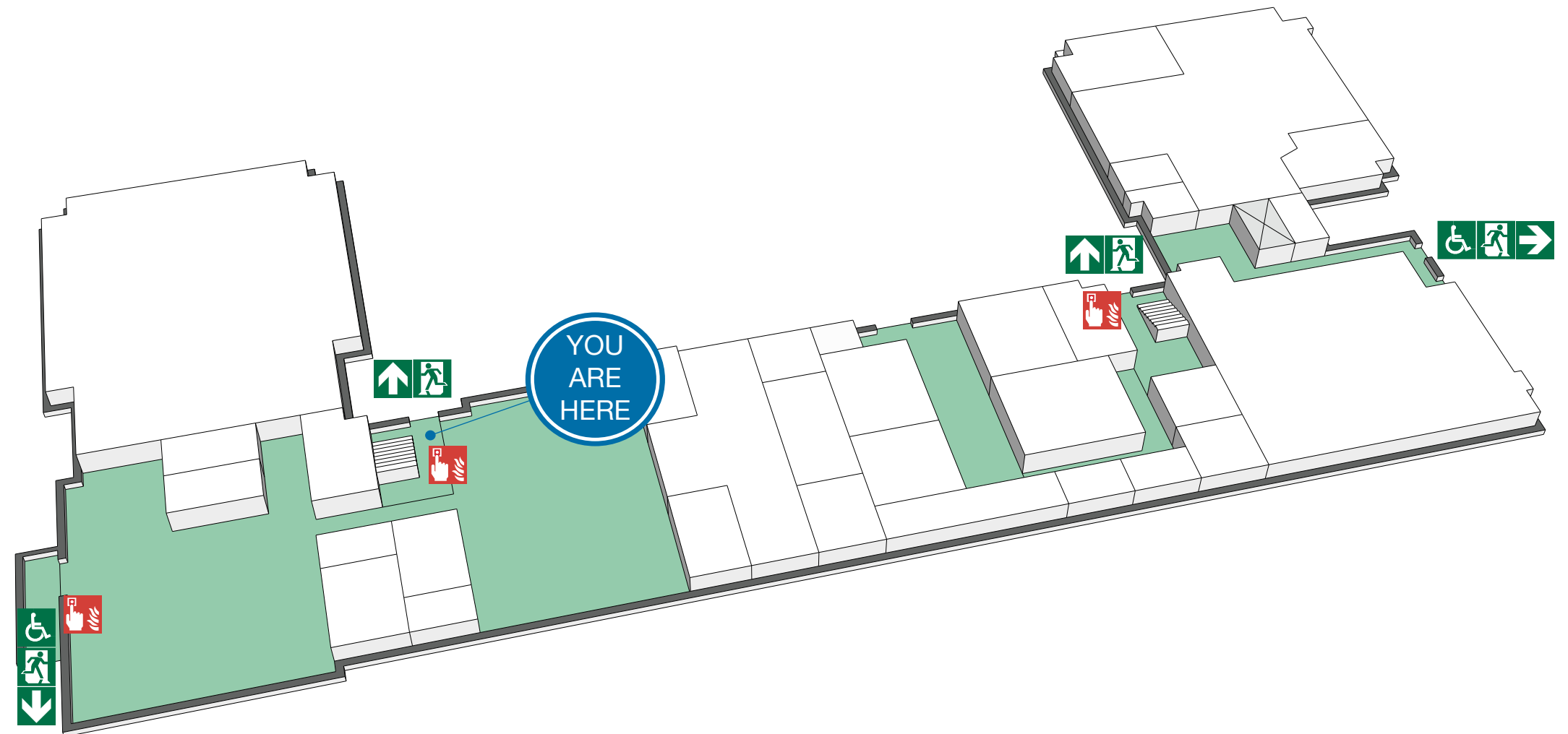
ASSEMBLY POINT



FIRE ESCAPE PLAN



LOUGHBOROUGH UNIVERSITY
WOLFSON T - GROUND FLOOR



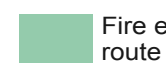
Fire alarm call point



Wheelchair accessible exit



Fire exit



Fire escape route



Assembly point



Safe refuge



Lift

FIRE ESCAPE PLAN



IN CASE OF FIRE



Operate nearest fire alarm call point



Telephone internal emergency number 888 or 0800 526966 if using outside line or mobile phone. In the event of a delay call 999 for the Fire Service giving the correct location of the building.



Do not attack the fire with extinguisher unless trained to do so.

ON HEARING THE ALARM



Evacuate the building and go to the assembly point. Your assembly point is :-

**By Village Restaurant
Assembly point 28**

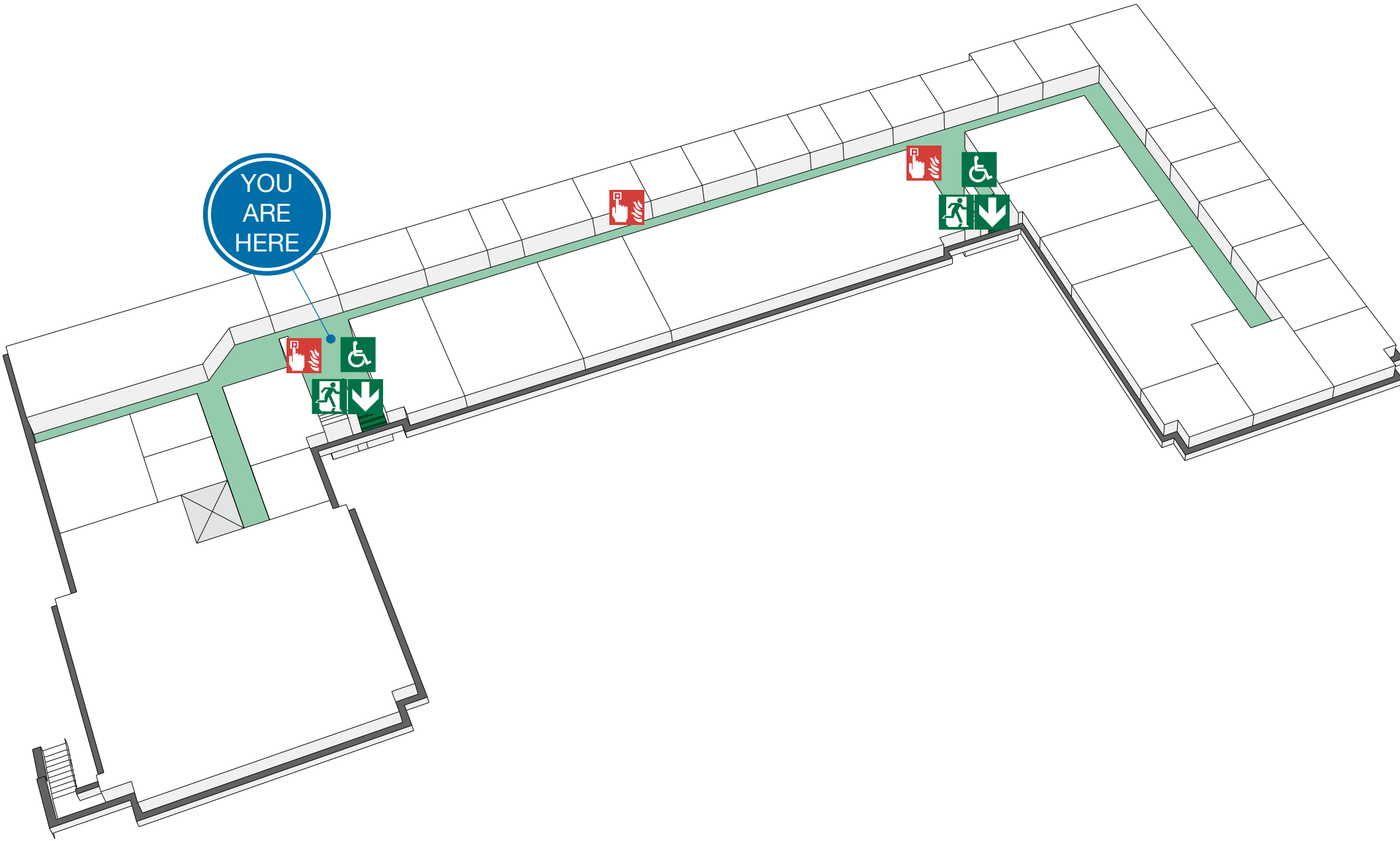
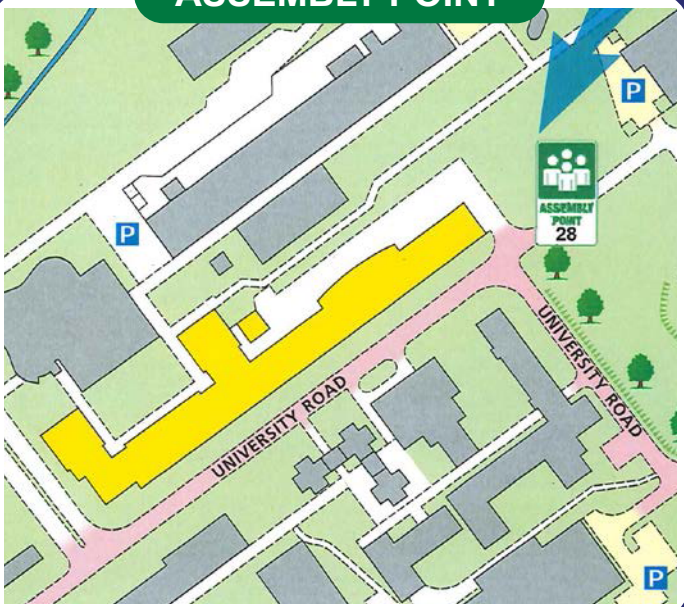


When alarm is given :- do not panic, do not run.



Leave the building following fire emergency exit signs.
DO NOT re-enter the building until told to do so by either the Fire Marshal, Loughborough University Security or the Fire Service.

ASSEMBLY POINT



Fire alarm call point



Wheelchair accessible exit



Fire exit



Fire escape route



Assembly point



Safe refuge



Lift

FIRE ESCAPE PLAN

LOUGHBOROUGH UNIVERSITY
WOLFSON T - SECOND FLOOR



IN CASE OF FIRE



Operate nearest fire alarm call point



Telephone internal emergency number 888 or 0800 526966 if using outside line or mobile phone. In the event of a delay call 999 for the Fire Service giving the correct location of the building.



Do not attack the fire with extinguisher unless trained to do so.

ON HEARING THE ALARM



Evacuate the building and go to the assembly point. Your assembly point is :-

**By Village Restaurant
Assembly point 28**



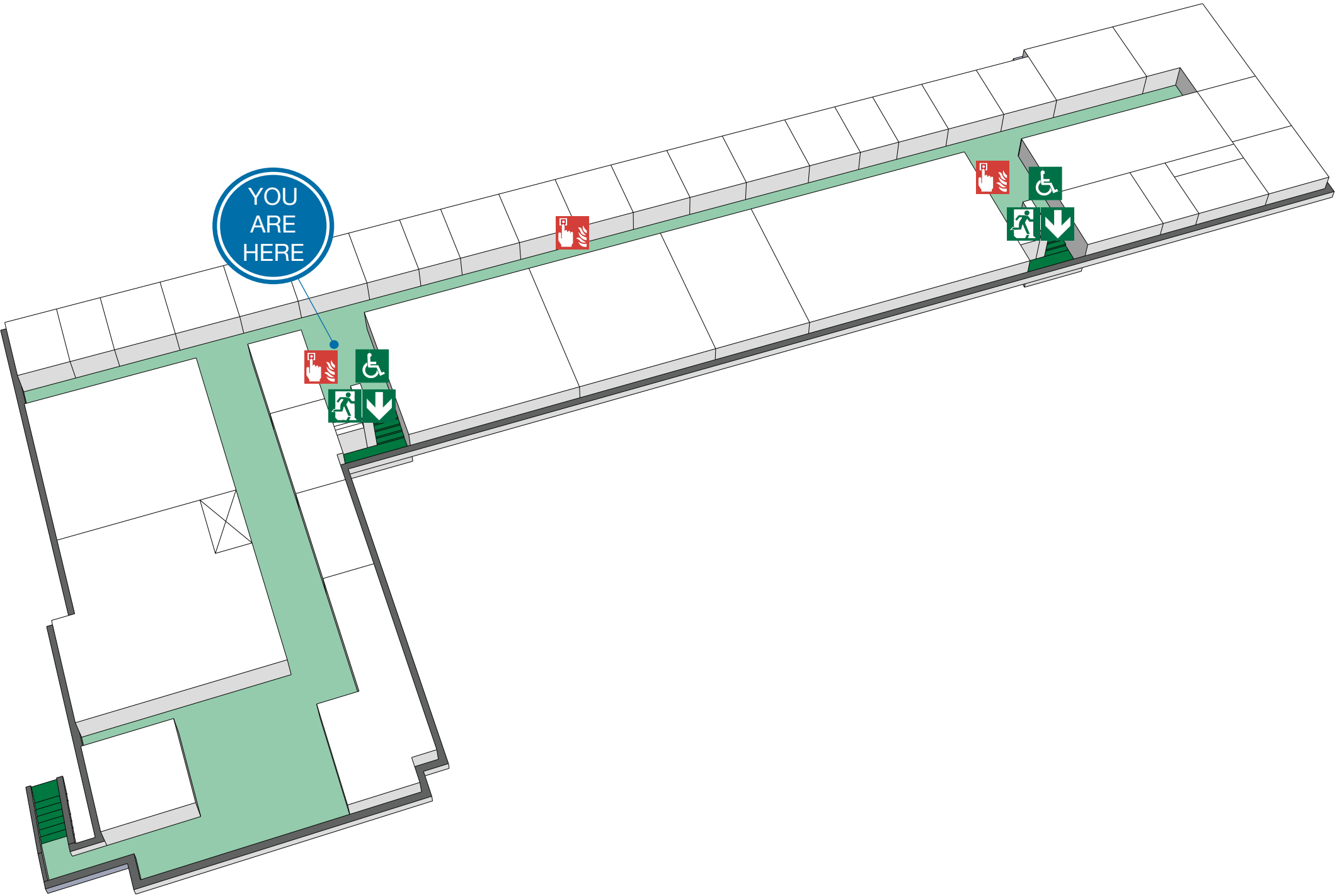
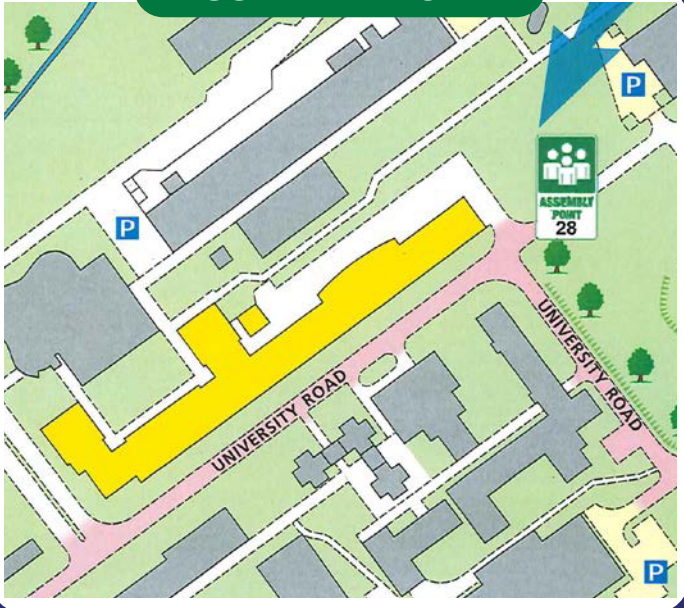
When alarm is given :- do not panic, do not run.



Leave the building following fire emergency exit signs.

DO NOT re-enter the building until told to do so by either the Fire Marshal, Loughborough University Security or the Fire Service.

ASSEMBLY POINT



Fire alarm call point



Wheelchair accessible exit



Fire exit



Fire escape route



Assembly point



Safe refuge



Lift



IN CASE OF FIRE



Operate nearest fire alarm call point



Telephone internal emergency number 888 or 0800 526966 if using outside line or mobile phone. In the event of a delay call 999 for the Fire Service giving the correct location of the building.



Do not attack the fire with extinguisher unless trained to do so.

ON HEARING THE ALARM



Evacuate the building and go to the assembly point. Your assembly point is :-

**By Village Restaurant
Assembly point 28**



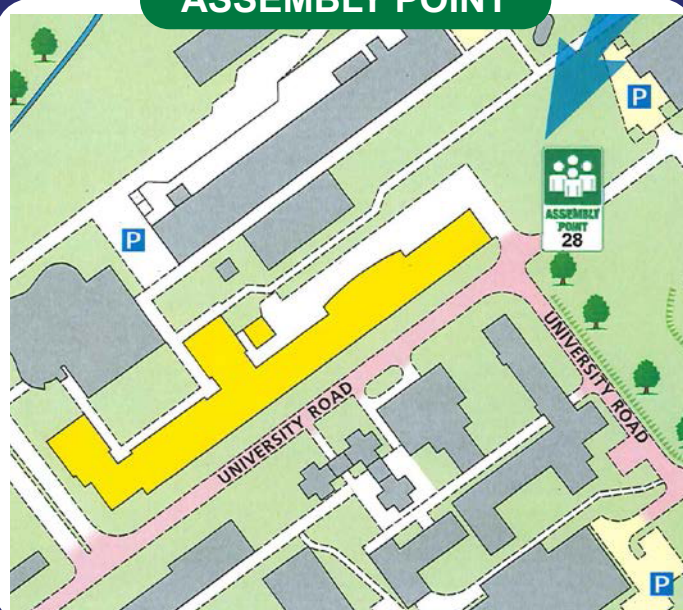
When alarm is given :- do not panic, do not run.



Leave the building following fire emergency exit signs.

DO NOT re-enter the building until told to do so by either the Fire Marshal, Loughborough University Security or the Fire Service.

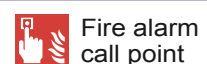
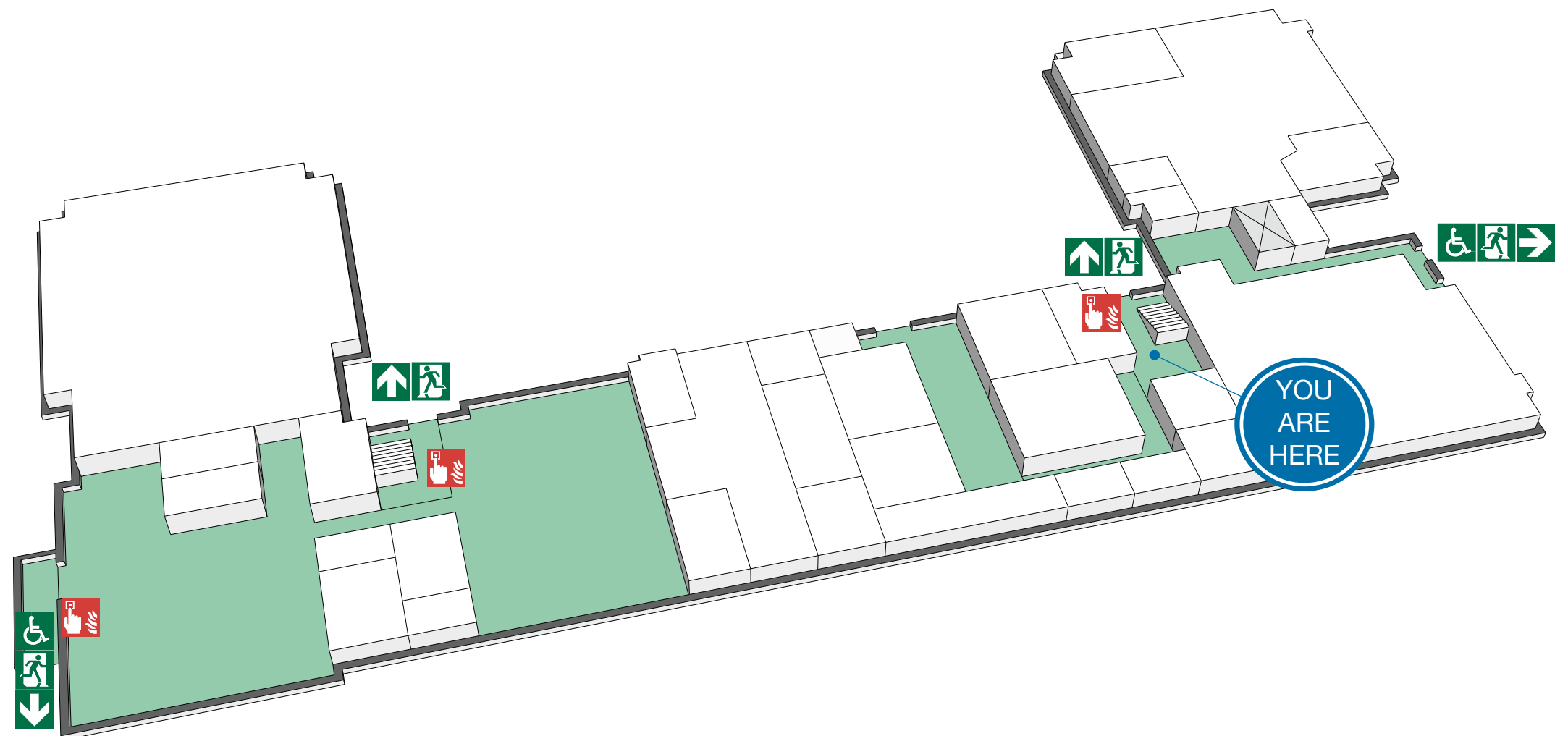
ASSEMBLY POINT



FIRE ESCAPE PLAN



LOUGHBOROUGH UNIVERSITY
WOLFSON T - GROUND FLOOR



Fire alarm call point



Wheelchair accessible exit



Fire exit



Fire escape route



Assembly point



Safe refuge



Lift

FIRE ESCAPE PLAN



IN CASE OF FIRE



Operate nearest fire alarm call point



Telephone internal emergency number 888 or 0800 526966 if using outside line or mobile phone. In the event of a delay call 999 for the Fire Service giving the correct location of the building.



Do not attack the fire with extinguisher unless trained to do so.

ON HEARING THE ALARM



Evacuate the building and go to the assembly point. Your assembly point is :-

**By Village Restaurant
Assembly point 28**

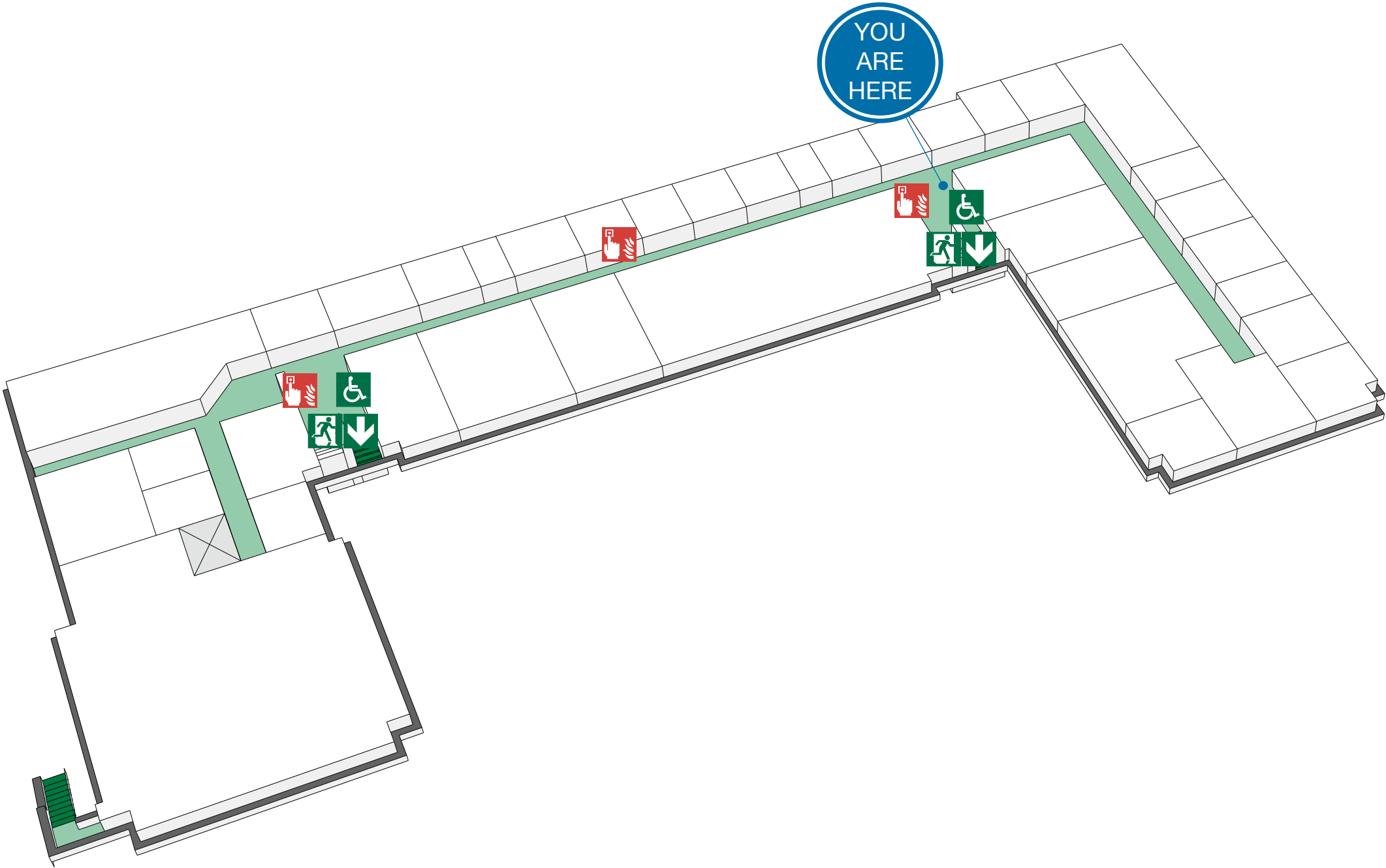
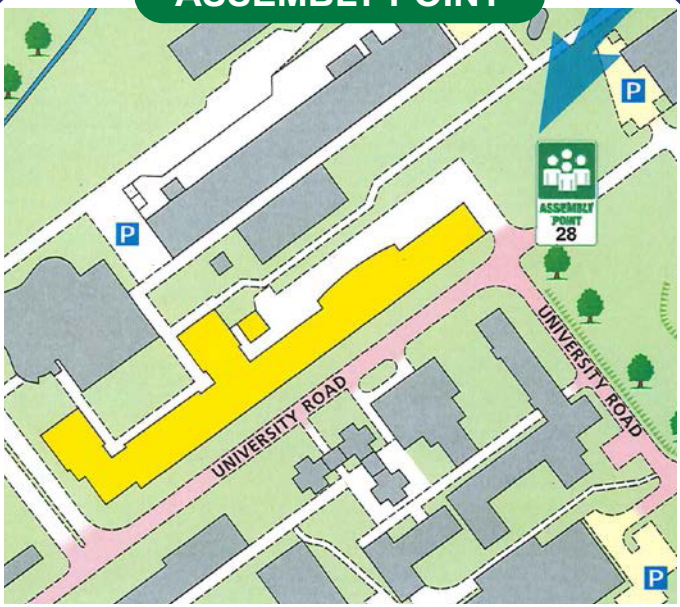


When alarm is given :- do not panic, do not run.



Leave the building following fire emergency exit signs.
DO NOT re-enter the building until told to do so by either the Fire Marshal, Loughborough University Security or the Fire Service.

ASSEMBLY POINT



Fire alarm call point



Wheelchair accessible exit



Fire exit



Fire escape route



Assembly point



Safe refuge



Lift



IN CASE OF FIRE



Operate nearest fire alarm call point



Telephone internal emergency number 888 or 0800 526966 if using outside line or mobile phone. In the event of a delay call 999 for the Fire Service giving the correct location of the building.



Do not attack the fire with extinguisher unless trained to do so.

ON HEARING THE ALARM



Evacuate the building and go to the assembly point. Your assembly point is :-

**By Village Restaurant
Assembly point 28**



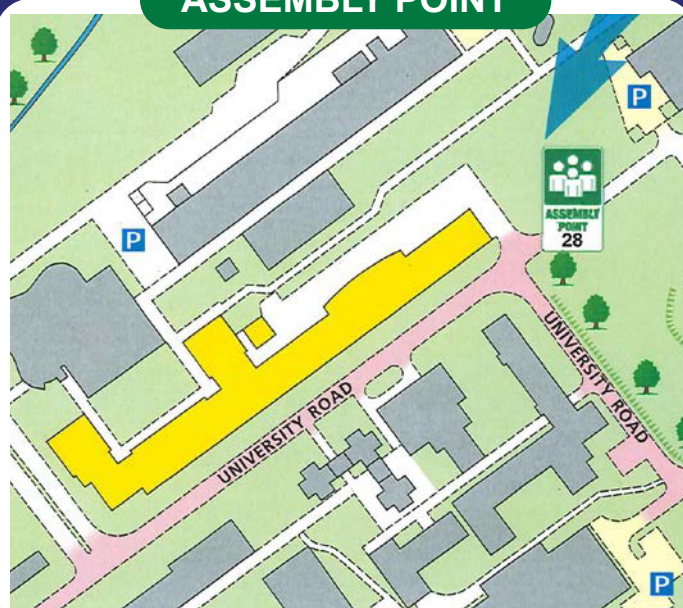
When alarm is given :- do not panic, do not run.



Leave the building following fire emergency exit signs.

DO NOT re-enter the building until told to do so by either the Fire Marshal, Loughborough University Security or the Fire Service.

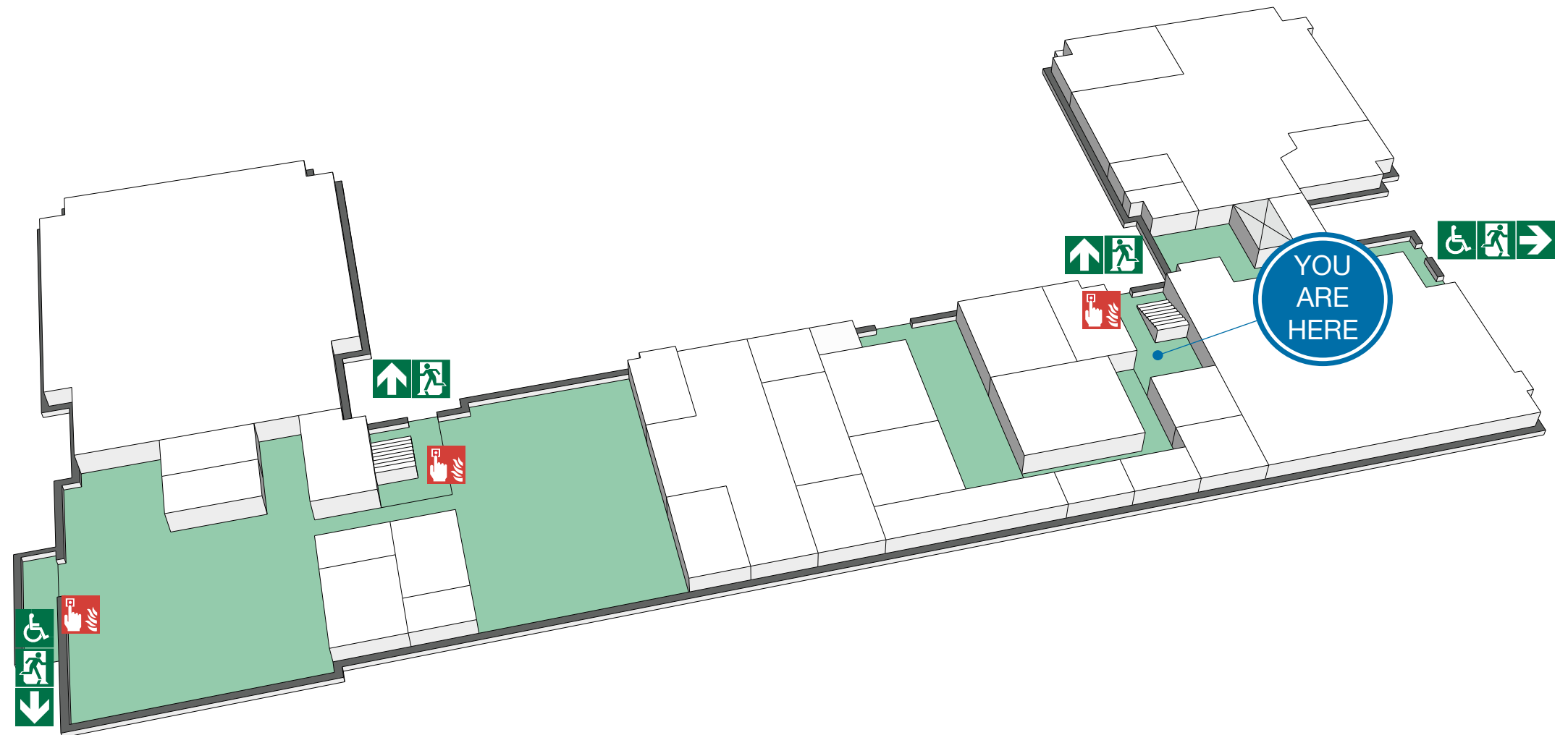
ASSEMBLY POINT



FIRE ESCAPE PLAN



LOUGHBOROUGH UNIVERSITY
WOLFSON T - GROUND FLOOR



Fire alarm call point



Wheelchair accessible exit



Fire exit

Fire escape route



Assembly point



Safe refuge



Lift

WOLFSON BUILDING

LAST UPDATED 13TH JUNE 2013

Purpose:

The purpose of a Generic Emergency Evacuation Plan (GEEP) is to enable visitors to the building with restricted mobility or those who may not be able to evacuate unaided to become familiar with the layout, evacuation procedures, available equipment and communication devices.

If you feel that this document does not provide you with sufficient information or that you require further assistance, please contact the Loughborough University Fire Officer on 01509 222182.

The building:

The Wolfson building is comprised of 3 floors. All floors are accessible via the lift in the main entrance.

Ground floor has accessible emergency exits that lead to the fire assembly point. These are located in the main entrance lobby.

The first and second floors have three fire exits accessible via the central corridor. Each of these exits are nominated safe refuge areas and provide a disabled emergency call point which links directly to security. These safe refuge areas are to be considered as the primary emergency egress points.

In addition to the fire exit stair cases, an alternative, accessible evacuation can be made via the central corridor and into the Mechanical Engineering wing of the building. This should only be used when the safe refuge areas are inaccessible.

Action required on hearing the fire alarm:

If able, you should leave the building immediately by the nearest fire exit (see attached floor plan) and report to the assigned assembly point for the building.

If you are unable to evacuate the building unaided, please proceed to one of the safe refuges located in each stair core (see attached floor plan), or if practical, use the alternate evacuation route into the Mechanical Engineering wing of the building.

A disabled emergency call point is available in each safe refuge. Use this to contact the security team and notify them of your location, details of which are printed on the front of the panel. Full details on how to use the emergency call point are also provided in the safe refuge.

Other recommendations:

It is recommended that all visitors to the Wolfson Building should familiarise themselves with the fire alarm signals and floor layout of the building. Floor plans and fire equipment locations have been provided with this document.

Equipment provided:

In addition to the general alarm, three safe refuge areas are available on the first and second floors. A disabled emergency call point that links directly to security is located in each of the safe refuge areas.

On the ground floor, accessible fire exits are located in the building main entrance (see attached plans) and these are to be used as primary exit from the main stair cores.

Alternate emergency evacuation from first and second floors is possible via the Mechanical Engineering wing of the building.

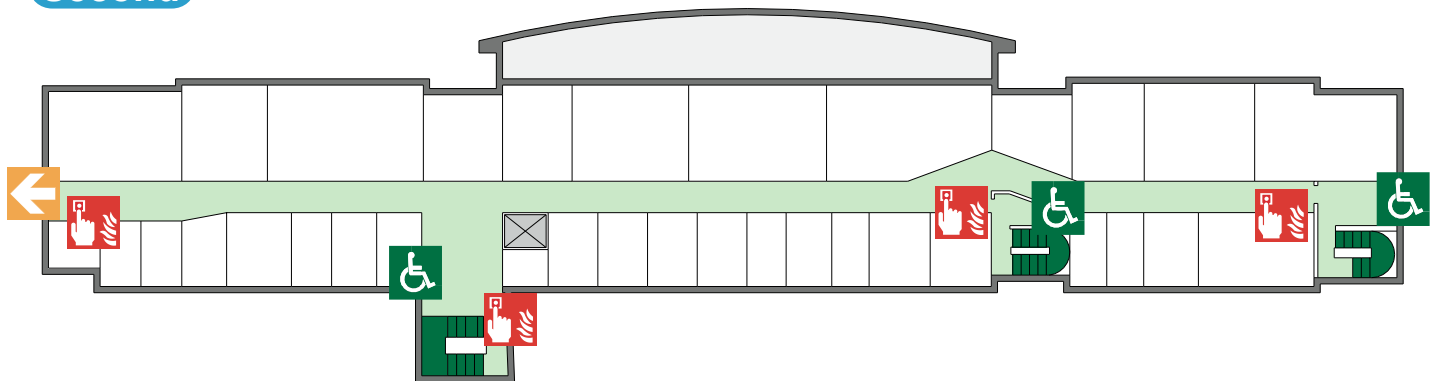


YOUR ASSEMBLY POINT IS:

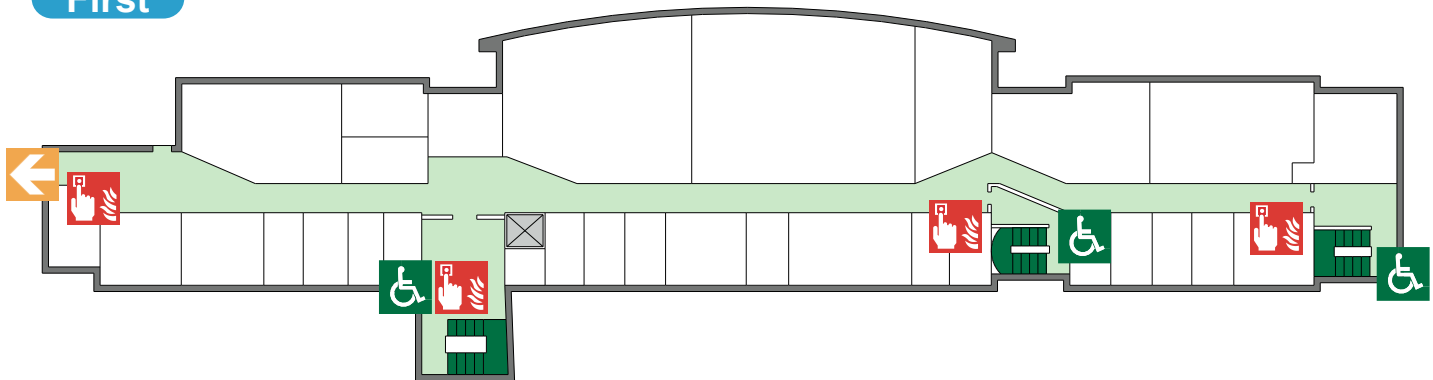
Fire assembly point 28 - By the Village Restaurant

WOLFSON BUILDING

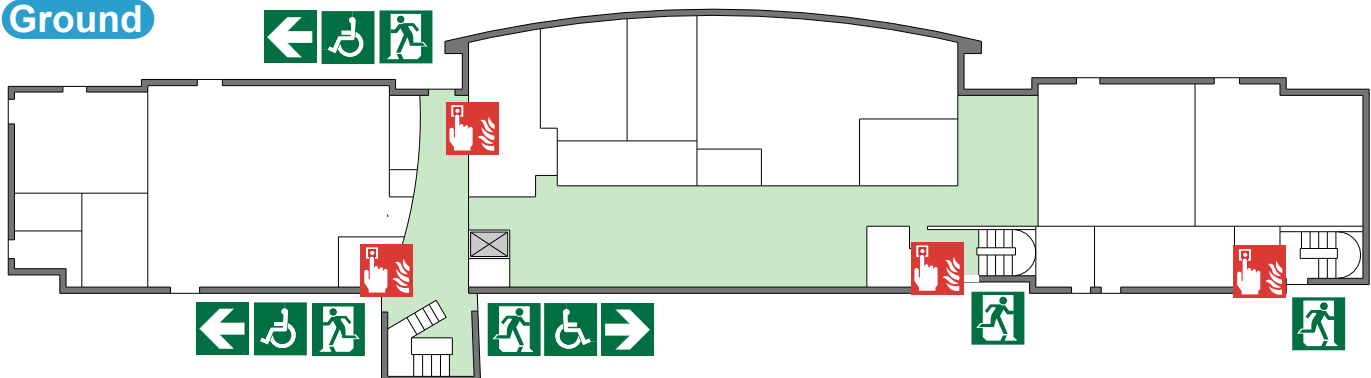
Second






First



Ground



-  Alternate evacuation route via Mechanical Engineering Building
-   Accessible final exit

-  Safe refuge
-  Call point

FIRE ESCAPE PLAN

LOUGHBOROUGH UNIVERSITY
WOLFSON TW - GROUND FLOOR



IN CASE OF FIRE



Operate nearest fire alarm call point



Telephone internal emergency number 888 or 0800 526966 if using outside line or mobile phone. In the event of a delay call 999 for the Fire Service giving the correct location of the building.



Do not attack the fire with extinguisher unless trained to do so.

ON HEARING THE ALARM



Evacuate the building and go to the assembly point. Your assembly point is :-

**By Village Restaurant
Assembly point 28**



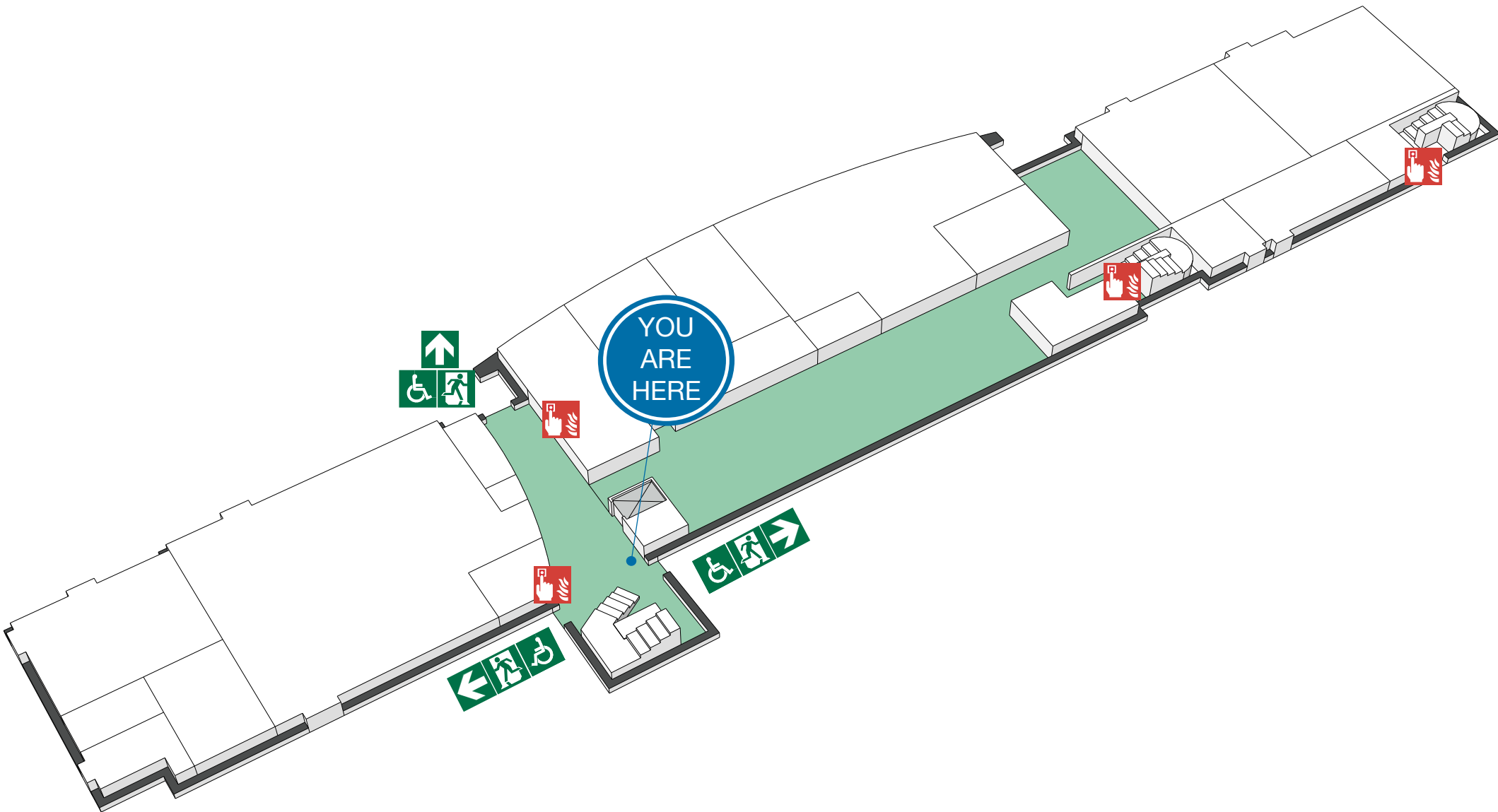
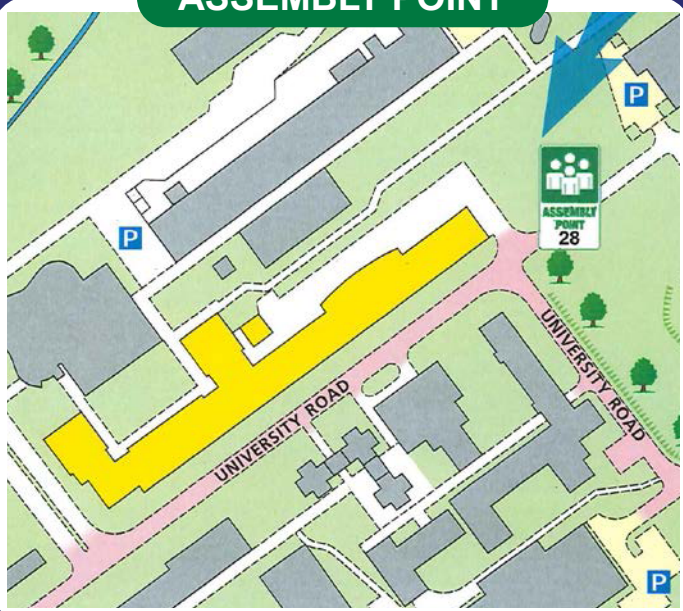
When alarm is given :- do not panic, do not run.



Leave the building following fire emergency exit signs.

DO NOT re-enter the building until told to do so by either the Fire Marshal, Loughborough University Security or the Fire Service.

ASSEMBLY POINT



Fire alarm call point



Wheelchair accessible exit



Fire exit



Fire escape route



Assembly point



Safe refuge



Lift

FIRE ESCAPE PLAN

LOUGHBOROUGH UNIVERSITY
WOLFSON TW - GROUND FLOOR



IN CASE OF FIRE



Operate nearest fire alarm call point



Telephone internal emergency number 888 or 0800 526966 if using outside line or mobile phone. In the event of a delay call 999 for the Fire Service giving the correct location of the building.



Do not attack the fire with extinguisher unless trained to do so.

ON HEARING THE ALARM



Evacuate the building and go to the assembly point. Your assembly point is :-

**By Village Restaurant
Assembly point 28**



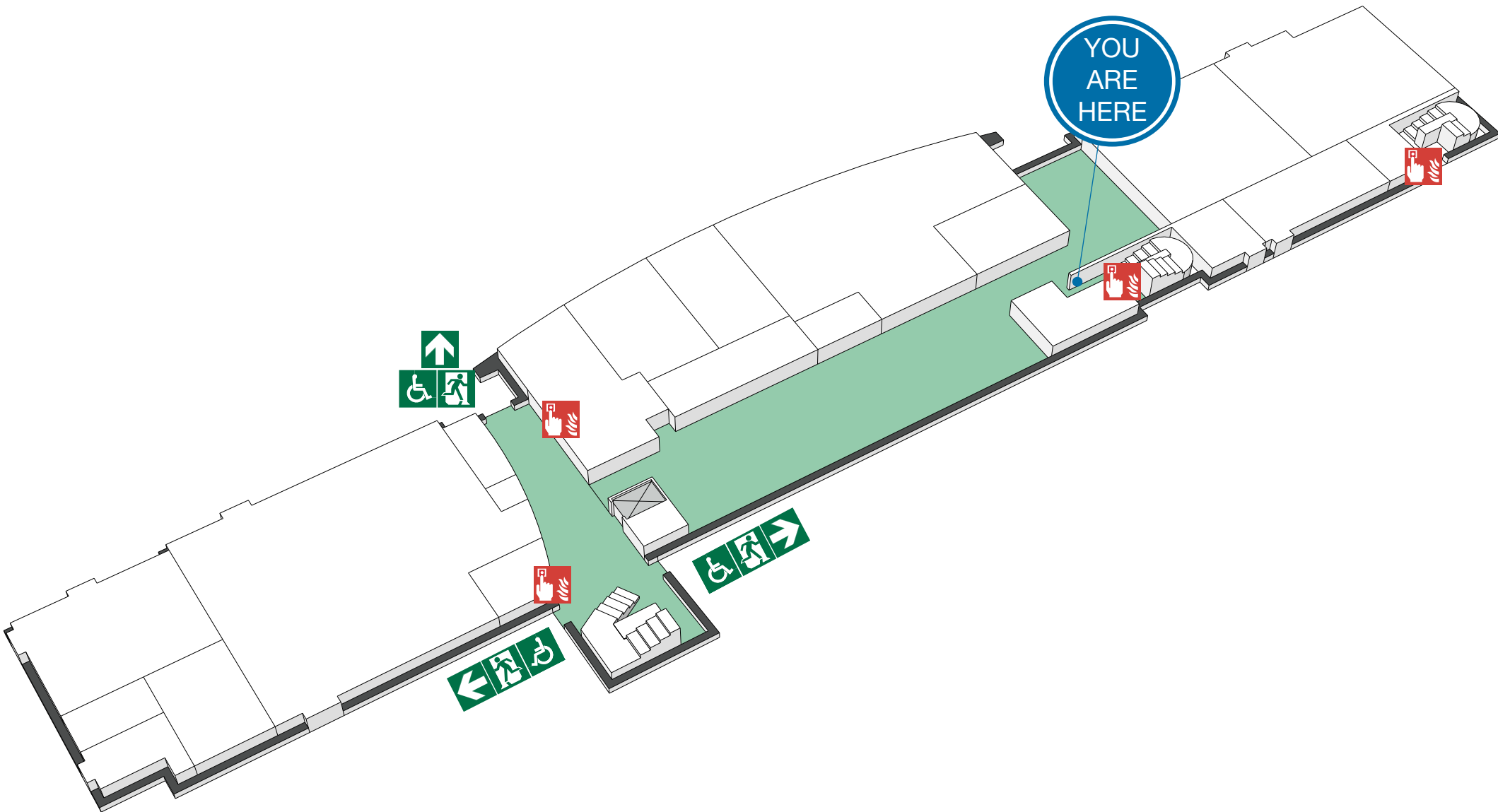
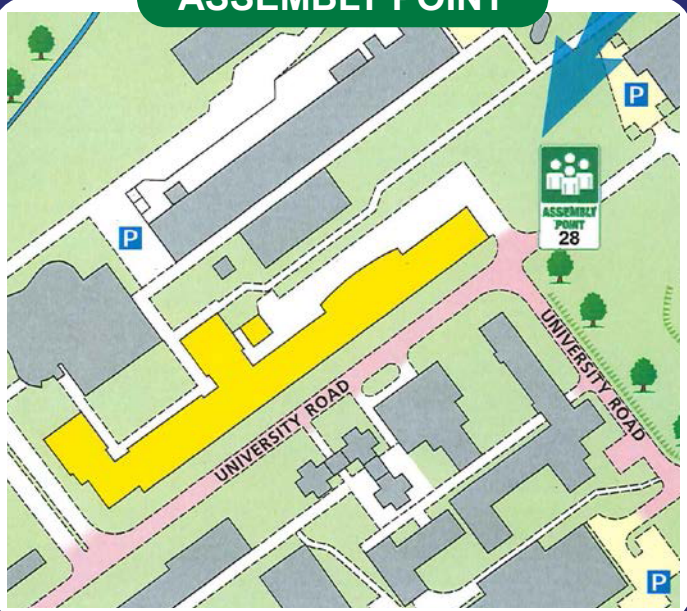
When alarm is given :- do not panic, do not run.



Leave the building following fire emergency exit signs.

DO NOT re-enter the building until told to do so by either the Fire Marshal, Loughborough University Security or the Fire Service.

ASSEMBLY POINT



Fire alarm call point



Wheelchair accessible exit



Fire exit



Fire escape route



Assembly point



Safe refuge



Lift

FIRE ESCAPE PLAN

LOUGHBOROUGH UNIVERSITY
WOLFSON TW - FIRST FLOOR



IN CASE OF FIRE



Operate nearest fire alarm call point



Telephone internal emergency number 888 or 0800 526966 if using outside line or mobile phone. In the event of a delay call 999 for the Fire Service giving the correct location of the building.



Do not attack the fire with extinguisher unless trained to do so.

ON HEARING THE ALARM



Evacuate the building and go to the assembly point. Your assembly point is :-

**By Village Restaurant
Assembly point 28**

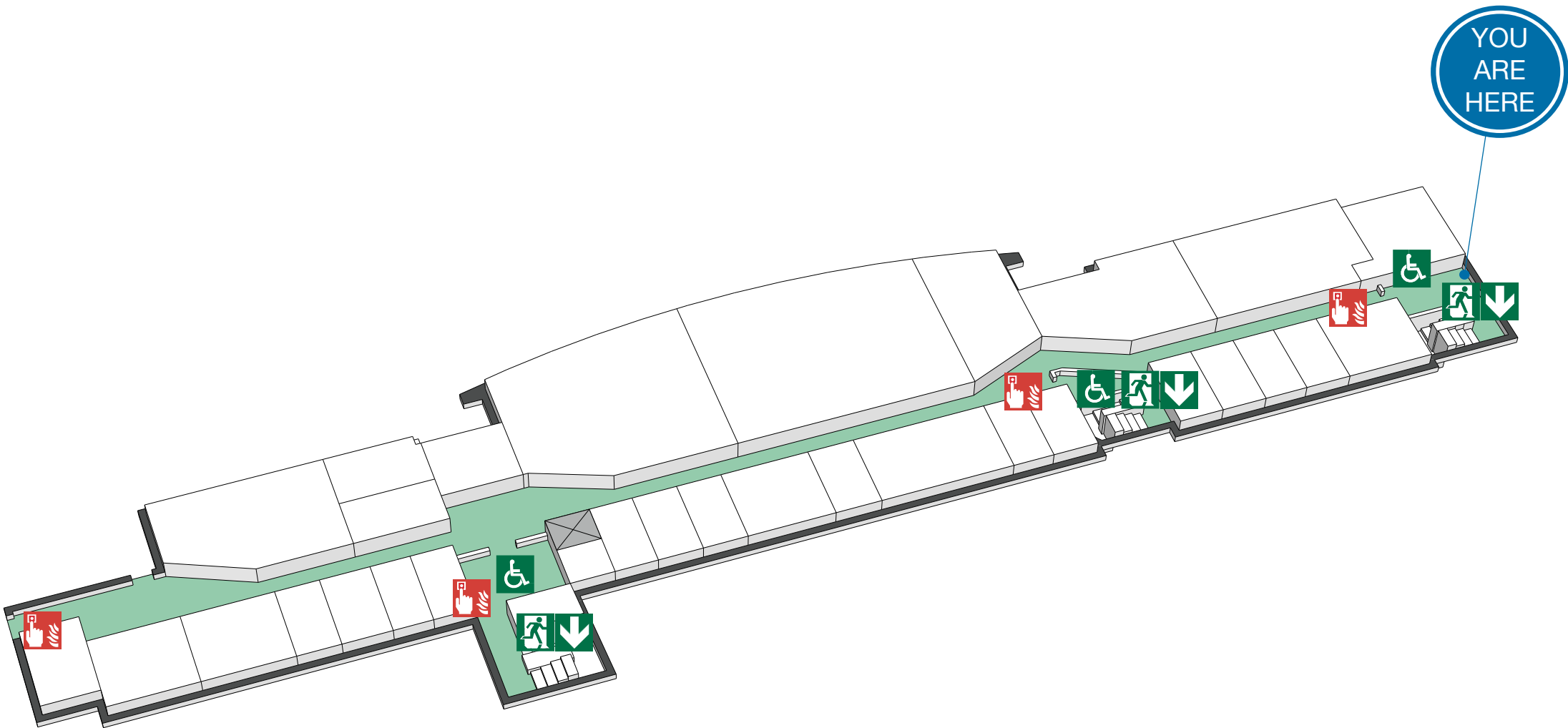


When alarm is given :- do not panic, do not run.

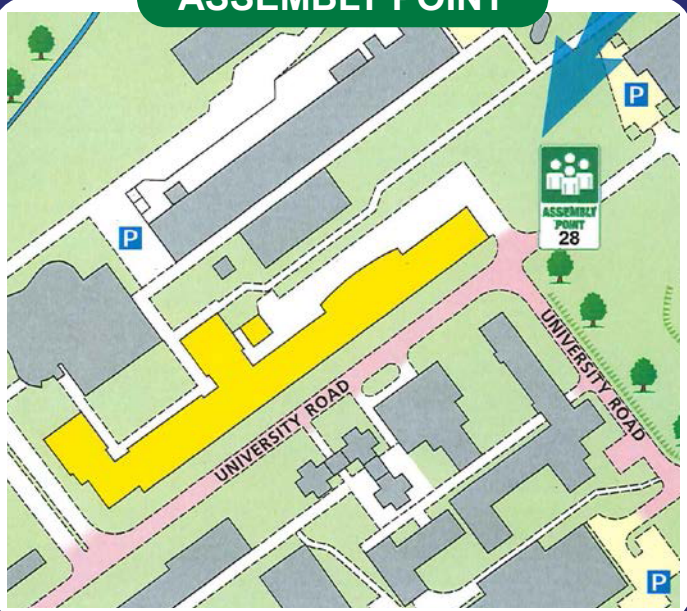


Leave the building following fire emergency exit signs.

DO NOT re-enter the building until told to do so by either the Fire Marshal, Loughborough University Security or the Fire Service.



ASSEMBLY POINT



Fire alarm call point



Wheelchair accessible exit



Fire exit



Fire escape route



Assembly point



Safe refuge



Lift

FIRE ESCAPE PLAN

LOUGHBOROUGH UNIVERSITY
WOLFSON TW - FIRST FLOOR



IN CASE OF FIRE



Operate nearest fire alarm call point



Telephone internal emergency number 888 or 0800 526966 if using outside line or mobile phone. In the event of a delay call 999 for the Fire Service giving the correct location of the building.



Do not attack the fire with extinguisher unless trained to do so.

ON HEARING THE ALARM



Evacuate the building and go to the assembly point. Your assembly point is :-

**By Village Restaurant
Assembly point 28**

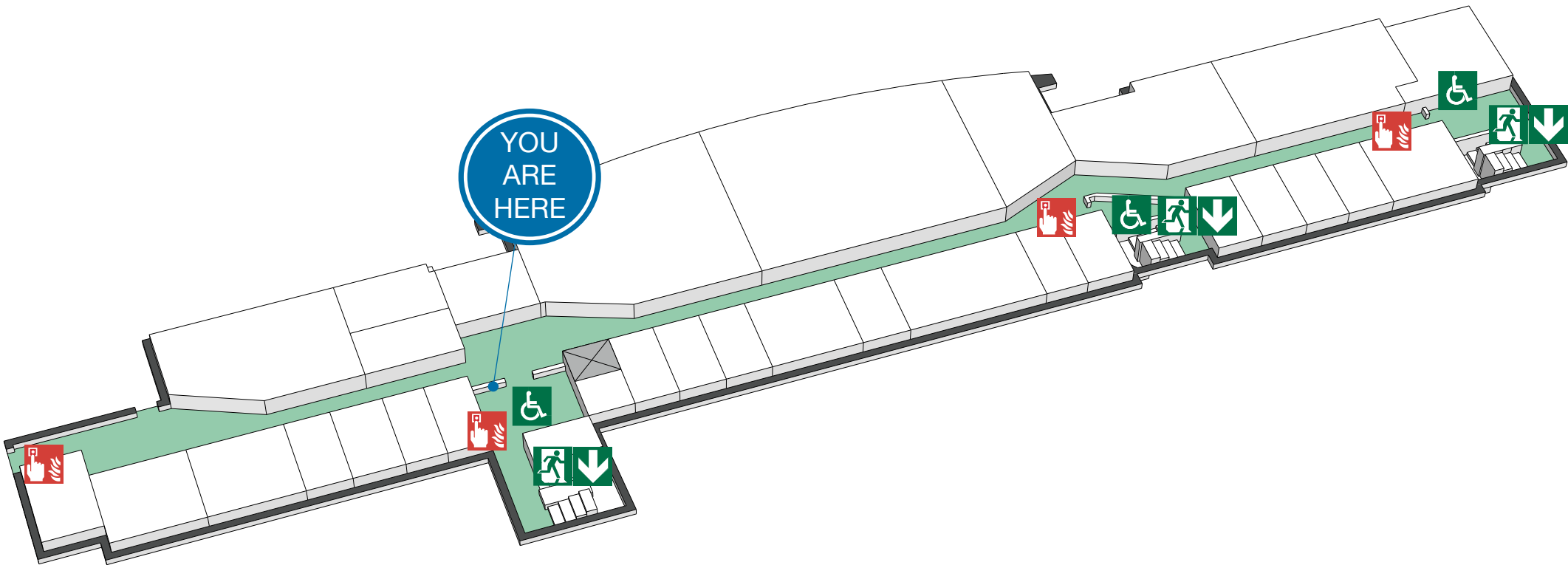


When alarm is given :- do not panic, do not run.

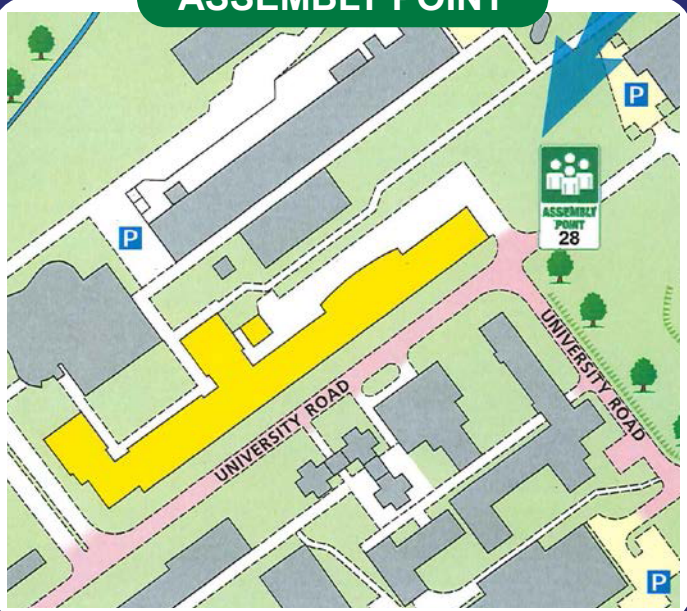


Leave the building following fire emergency exit signs.

DO NOT re-enter the building until told to do so by either the Fire Marshal, Loughborough University Security or the Fire Service.



ASSEMBLY POINT



Fire alarm call point



Wheelchair accessible exit



Fire exit



Fire escape route



Assembly point



Safe refuge



Lift

FIRE ESCAPE PLAN

LOUGHBOROUGH UNIVERSITY
WOLFSON TW - SECOND FLOOR



IN CASE OF FIRE



Operate nearest fire alarm call point



Telephone internal emergency number 888 or 0800 526966 if using outside line or mobile phone. In the event of a delay call 999 for the Fire Service giving the correct location of the building.



Do not attack the fire with extinguisher unless trained to do so.

ON HEARING THE ALARM



Evacuate the building and go to the assembly point. Your assembly point is :-

**By Village Restaurant
Assembly point 28**



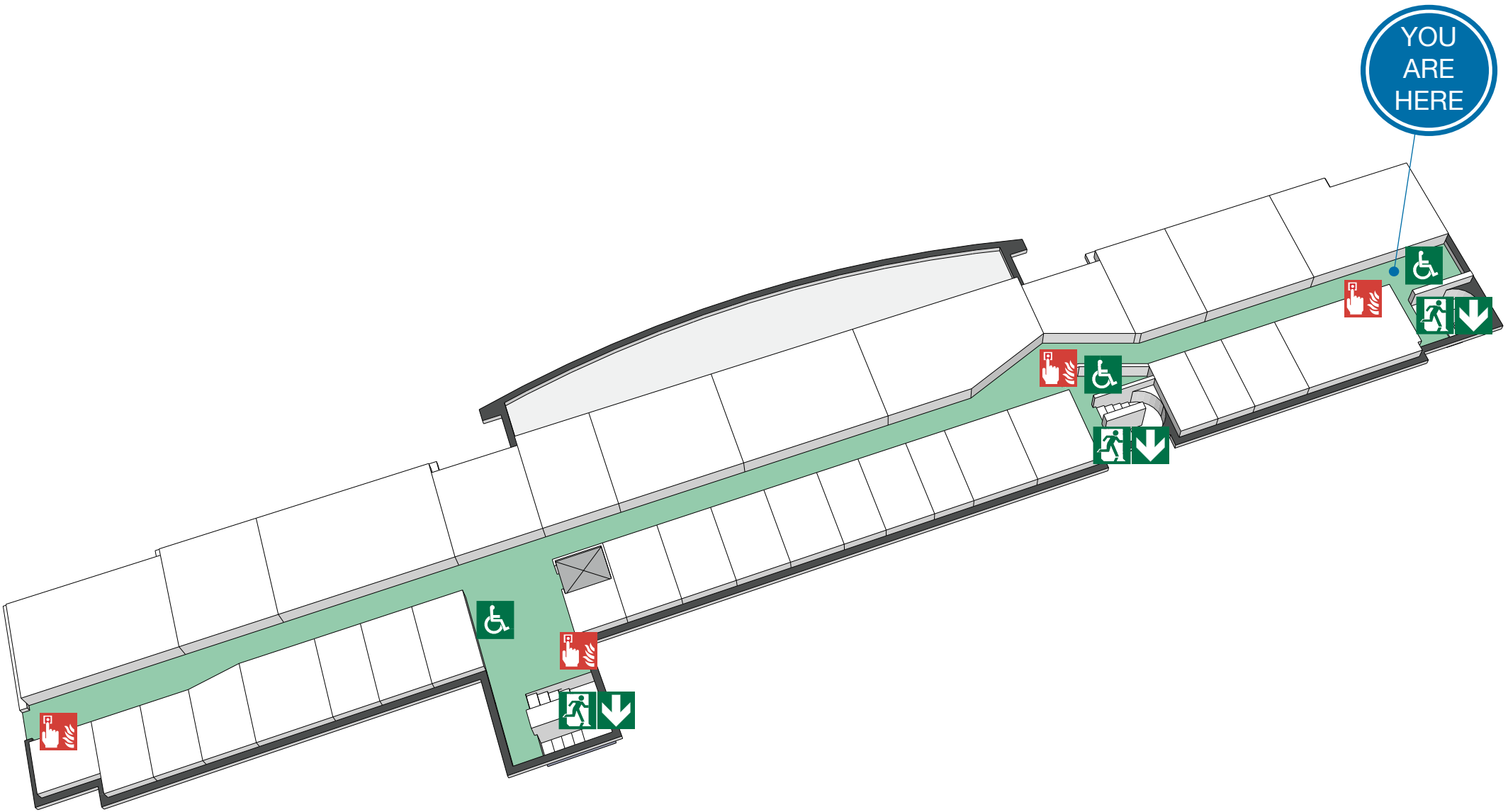
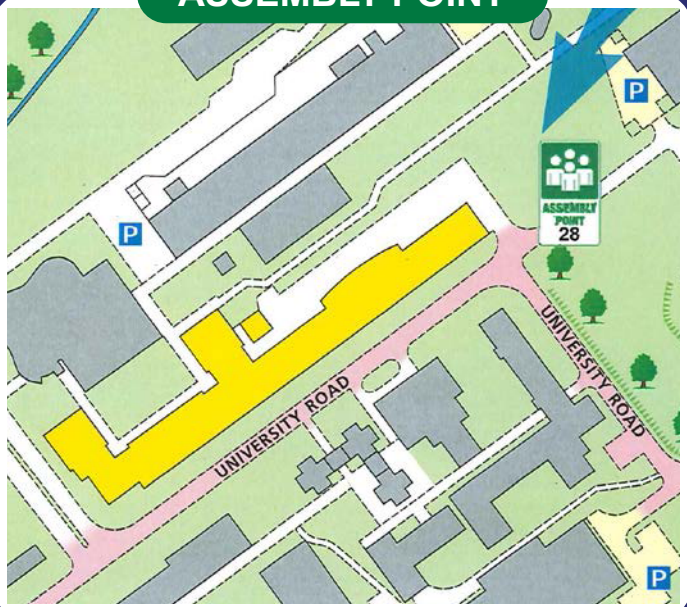
When alarm is given :- do not panic, do not run.



Leave the building following fire emergency exit signs.

DO NOT re-enter the building until told to do so by either the Fire Marshal, Loughborough University Security or the Fire Service.

ASSEMBLY POINT



Fire alarm call point



Wheelchair accessible exit



Fire exit



Fire escape route



Assembly point



Safe refuge



Lift



FIRE ESCAPE PLAN

LOUGHBOROUGH UNIVERSITY
WOLFSON TW - SECOND FLOOR

IN CASE OF FIRE



Operate nearest fire alarm call point



Telephone internal emergency number 888 or 0800 526966 if using outside line or mobile phone. In the event of a delay call 999 for the Fire Service giving the correct location of the building.



Do not attack the fire with extinguisher unless trained to do so.

ON HEARING THE ALARM



Evacuate the building and go to the assembly point. Your assembly point is :-

**By Village Restaurant
Assembly point 28**

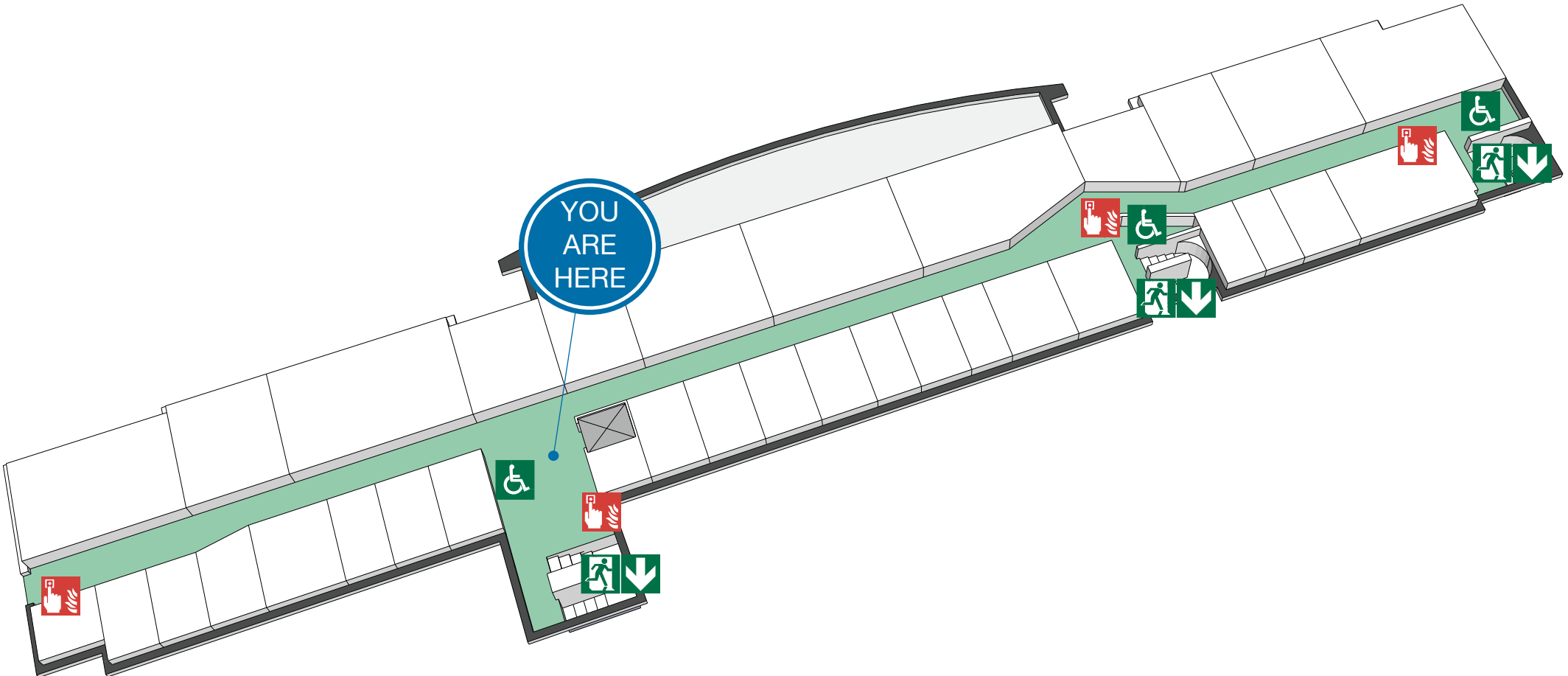


When alarm is given :- do not panic, do not run.

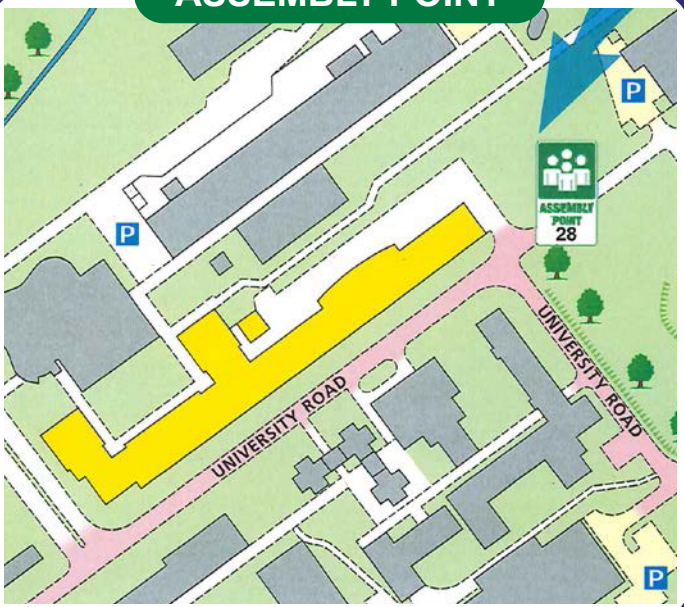


Leave the building following fire emergency exit signs.

DO NOT re-enter the building until told to do so by either the Fire Marshal, Loughborough University Security or the Fire Service.



ASSEMBLY POINT



Fire alarm call point



Wheelchair accessible exit



Fire exit



Fire escape route



Assembly point



Safe refuge



Lift