

West Park Teaching Hub

LAST UPDATED July 2016

Purpose:

The purpose of a Generic Emergency Evacuation Plan (GEEP) is to enable visitors to the building with restricted mobility or those who may not be able to evacuate unaided to become familiar with the layout, evacuation procedures, available equipment and communication devices.

If you feel that this document does not provide you with sufficient information or that you require further assistance, please contact the Loughborough University Fire Officer on 01509 222182.

The building:

West Park Teaching Hub comprises of 1 floor.

Several accessible fire exits are available at ground level.

Action required on hearing the fire alarm:

If able, you should leave the building immediately by the nearest fire exit (see attached floor plan) and report to the assigned assembly point for the building.

Other recommendations:

It is recommended that all visitors to the West Park Teaching Hub should familiarise themselves with the fire alarm signals and floor layout. Floor plans and evacuation equipment locations have been provided with this document.

Equipment provided:

Accessible fire exits are available on the ground floor of the building.



The Deaf Alerter system is installed in this building. If you would like access to a Deaf Alerter Pager, please contact the University Fire Officer on 01509 222182.

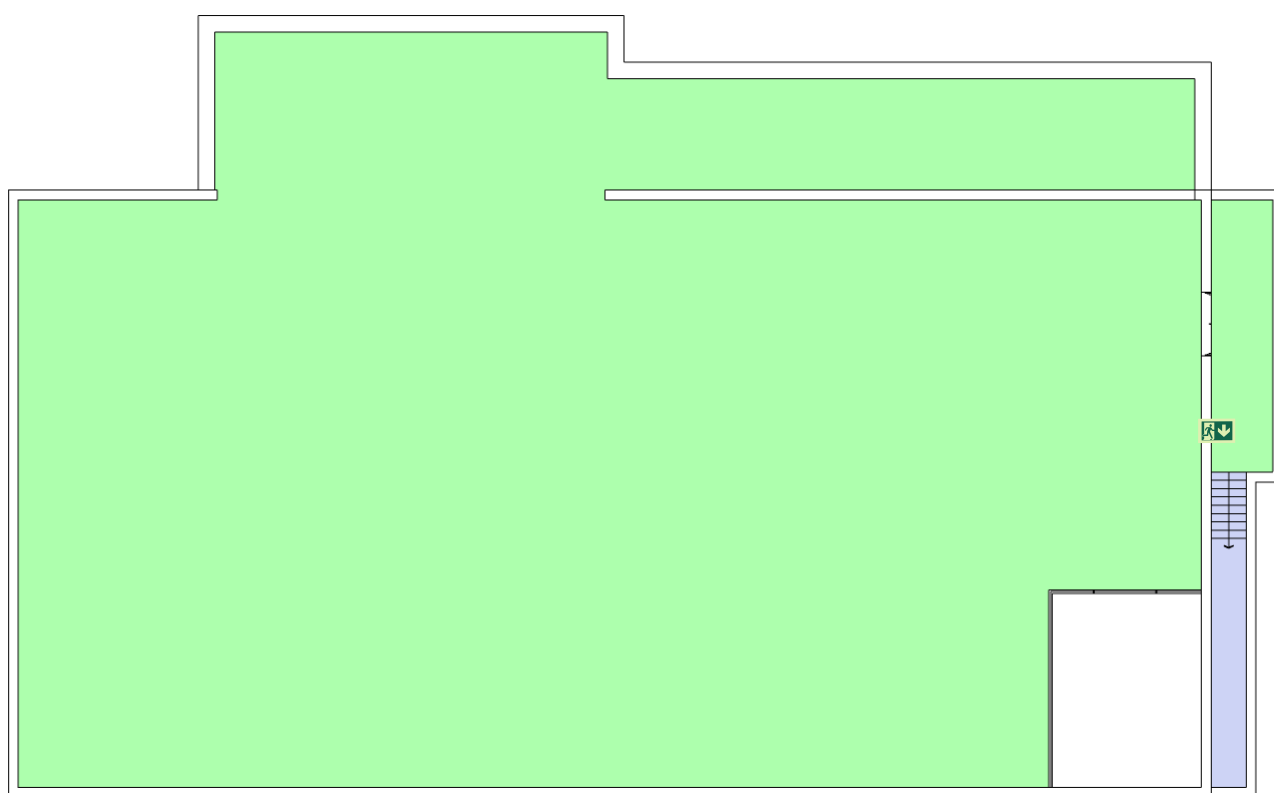


YOUR ASSEMBLY POINT IS:

Fire Assembly Point Car Park

West Park Teaching Hub

LAST UPDATED July 2016



Basement



Accessible final exit



Evacuation lift



Safe refuge



Evacuation
coms



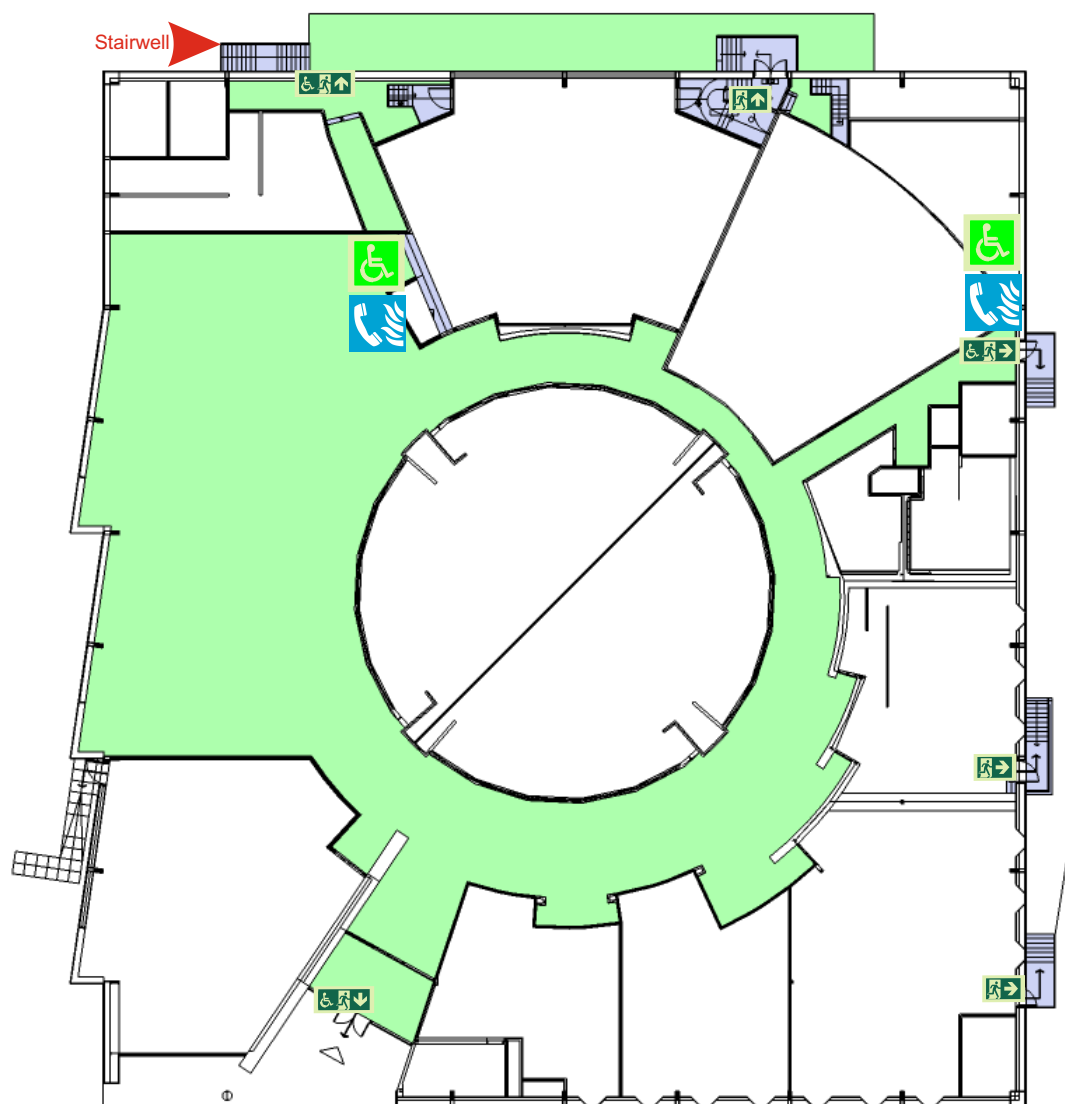
Lift
evacuation
lift

Generic Emergency Evacuation Plan

Loughborough University

West Park Teaching Hub

LAST UPDATED July 2016



Ground Floor



Accessible final exit



Evacuation lift



Safe refuge



Evacuation
coms



Non
evacuation
lift

FIRE ESCAPE PLAN

Loughborough
University



IN CASE OF FIRE



Sound Alarm
Operate nearest fire alarm call point



Telephone internal emergency number 888 or 0800526966 if using outside line or mobile phone. In the event of a delay call 999 for the Fire Service giving the correct location of the building



Do not attack the fire with extinguisher unless trained to do so.



ON HEARING THE ALARM

Evacuate the building and go to the assembly point. Your assembly point is:

Assembly Point Carpark

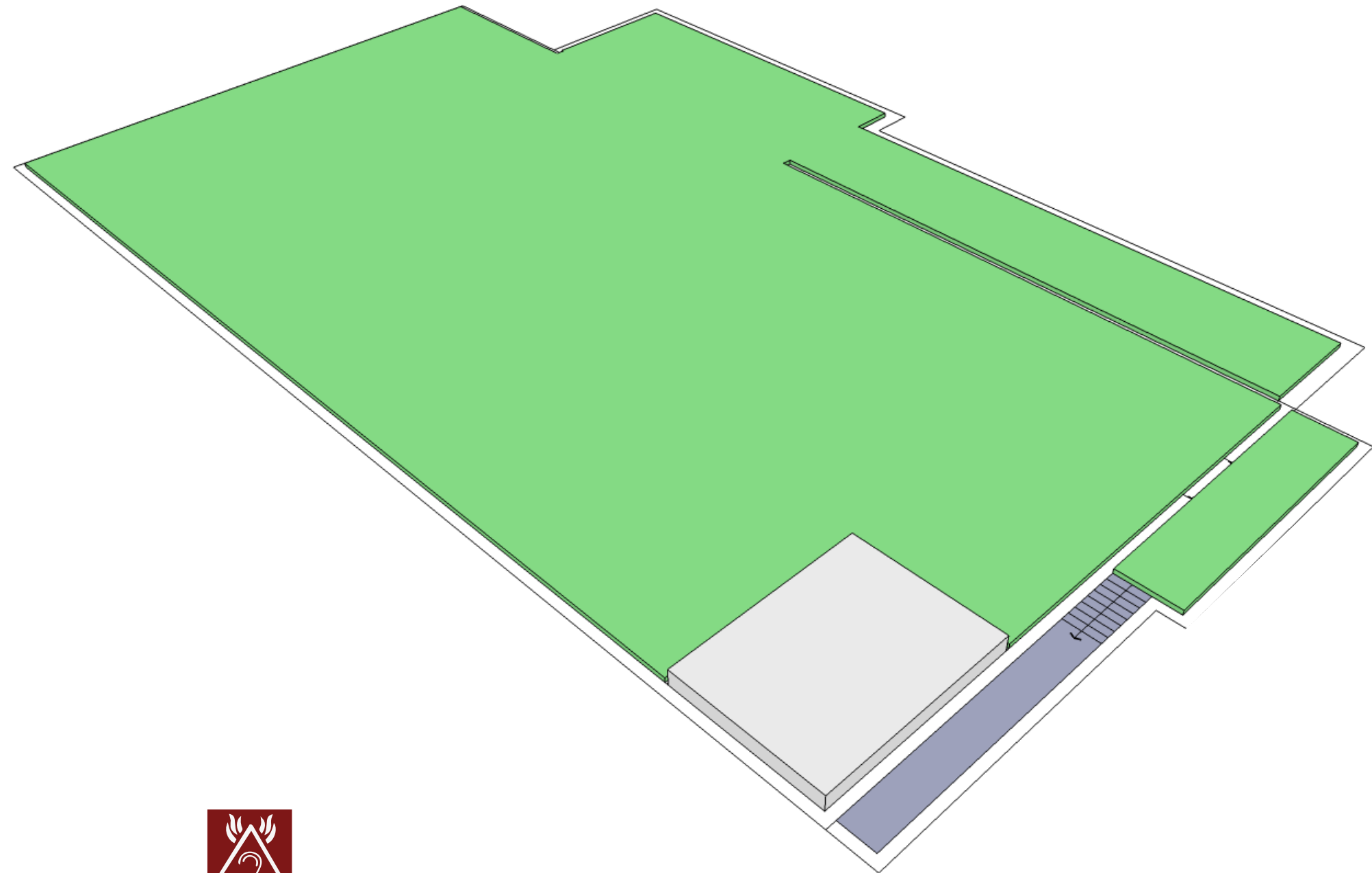
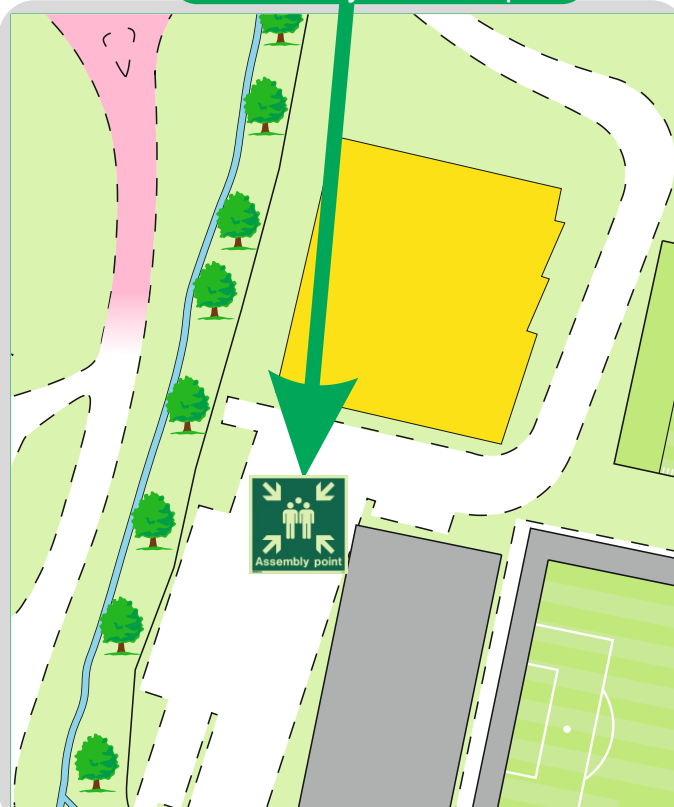


When alarm is given: Do not panic Do not run. Leave the building following fire emergency exit signs



Leave the building following emergency exit signs.
DO NOT re-enter the building until told to do so by either the fire marshal, Loughborough university Security or the Fire Service

Assembly Point Carpark



The Deaf Alerter system is installed in the building.
Please contact the University Fire Officer on 01509 222182 for further advice.

simplydesignsolutions



Fire alarm call point.



Fire exit.



Wheelchair accessible exit.



Fire escape route.



Assembly point.



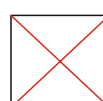
Safe Refuge.



Evac Lift.



Evac Coms



Non Evac Lifts

FIRE ESCAPE PLAN

Loughborough University



IN CASE OF FIRE



Sound Alarm
Operate nearest fire alarm call point



Telephone internal emergency number 888 or 0800526966 if using outside line or mobile phone. In the event of a delay call 999 for the Fire Service giving the correct location of the building



Do not attack the fire with extinguisher unless trained to do so.



ON HEARING THE ALARM

Evacuate the building and go to the assembly point. Your assembly point is:

Assembly Point Carpark

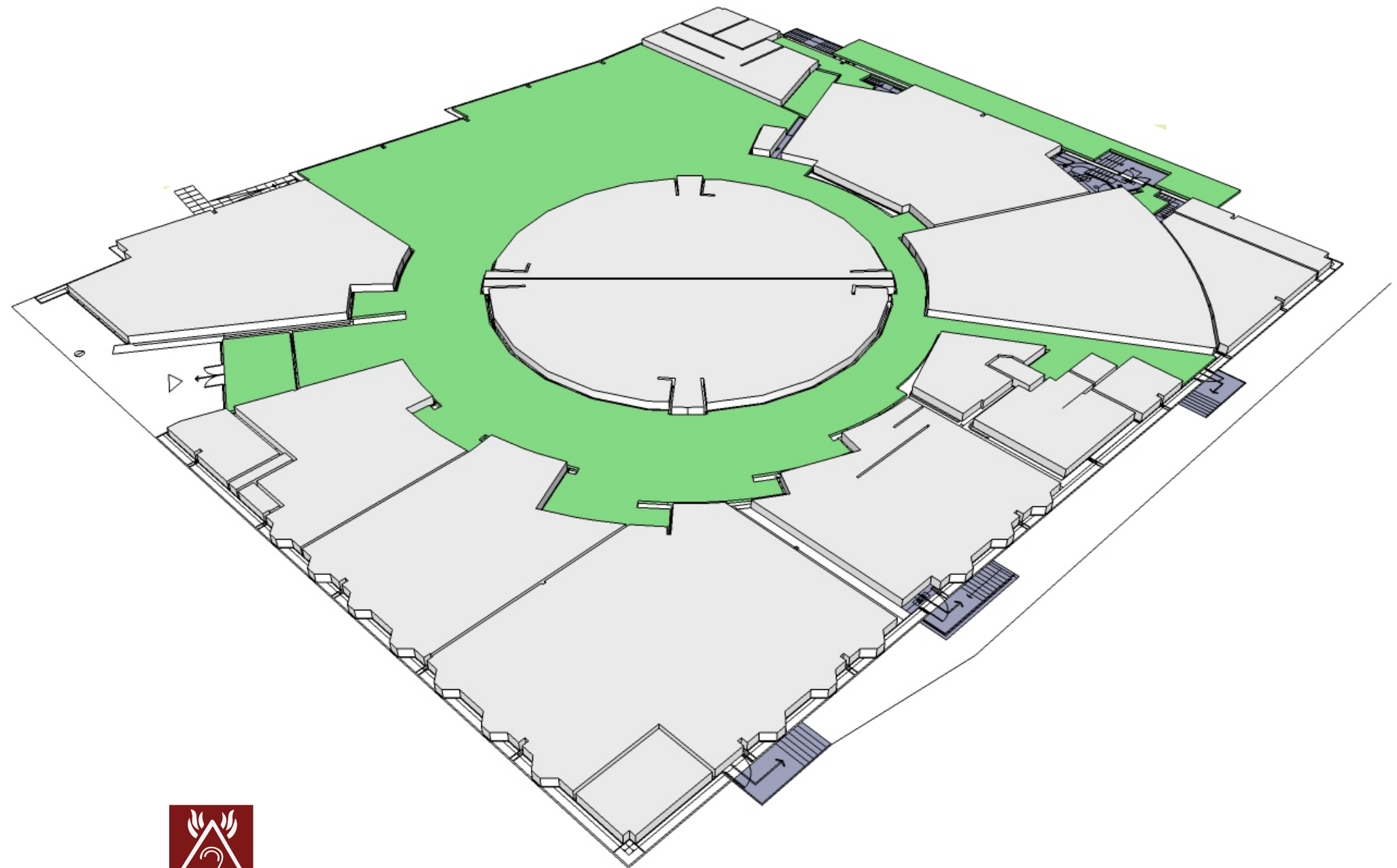
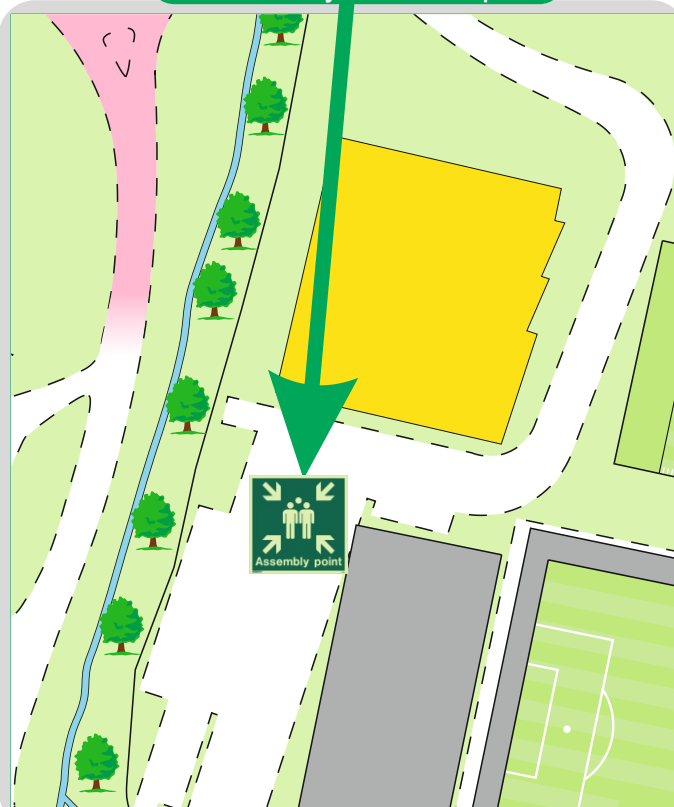


When alarm is given: Do not panic Do not run. Leave the building following fire emergency exit signs



Leave the building following emergency exit signs.
DO NOT re-enter the building until told to do so by either the fire marshal, Loughborough university Security or the Fire Service

Assembly Point Carpark



The Deaf Alerter system is installed in the building.
Please contact the University Fire Officer on 01509 222182 for further advice.

simplydesignsolutions



Fire alarm call point.



Fire exit.



Wheelchair accessible exit.



Fire escape route.



Assembly point.



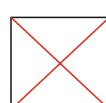
Safe Refuge.



Evac Lift.



Evac Coms



Non Evac Lift