

STEWART MILLER BUILDING

LAST UPDATED 13TH JUNE 2013

Purpose:

The purpose of a Generic Emergency Evacuation Plan (GEEP) is to enable visitors to the building with restricted mobility or those who may not be able to evacuate unaided to become familiar with the layout, evacuation procedures, available equipment and communication devices.

If you feel that this document does not provide you with sufficient information or that you require further assistance, please contact the Loughborough University Fire Officer on 01509 222182.

The building:

The Stewart Miller building is comprised of 3 floors. All floors are accessible via the lifts in the main entrance corridor.

The building is split level with accessible emergency exits that lead to the fire assembly point on two levels.

The first and second floors have three stair cores all of which are emergency exits. The two at either end of the building are also safe refuge areas and provide a disabled emergency call point which links directly to security.

The Stewart Miller building is also equipped to be used with the Deaf Alerter system.

Action required on hearing the fire alarm:

If able, you should leave the building immediately by the nearest fire exit (see attached floor plan) and report to the assigned assembly point for the building.

If you are unable to evacuate the building unaided, please proceed to one of the safe refuges located in each stair core (see attached floor plan).

A disabled emergency call point is available in each safe refuge. Use this to contact the security team and notify them of your location, details of which are printed on the front of the panel. Full details on how to use the emergency call point are also provided in the safe refuge.

Other recommendations:

It is recommended that all visitors to the Stewart Miller building should familiarise themselves with the fire alarm signals and floor layout of the building. Floor plans and fire equipment locations have been provided with this document.

Equipment provided:

In addition to the general alarm, four safe refuge areas are available on first and second floors. A disabled emergency call point that links directly to security is located in each of the safe refuge areas.

Accessible fire exits are available on the ground floor of the building (see attached plans), and these are to be used as primary exit from the main stair cores.

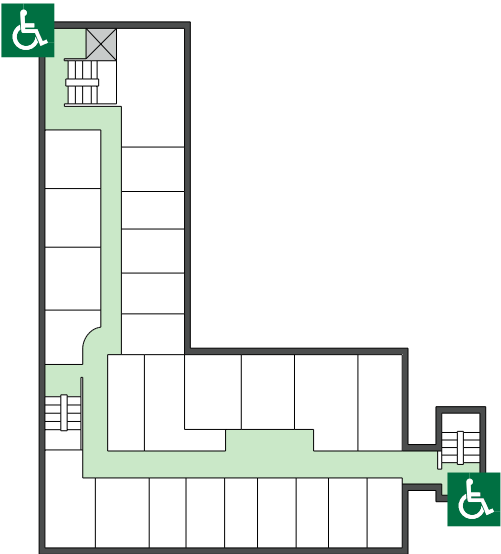
The Deaf Alerter® system is installed in this building. Please contact the Loughborough University Fire Officer on 01509 222182 for a compatible unit for your visit.



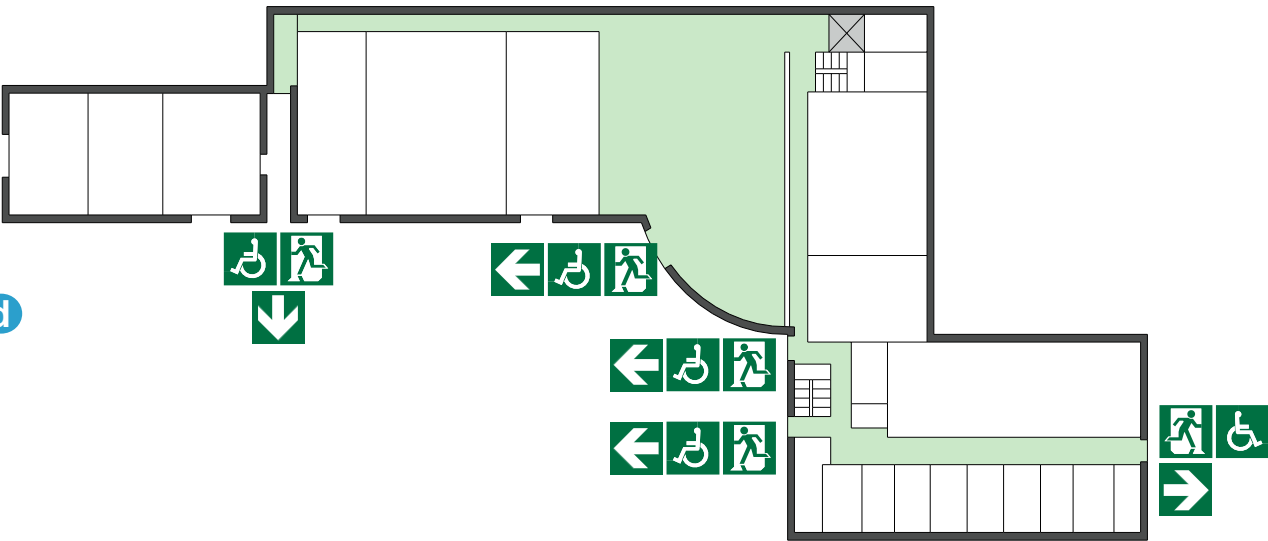
YOUR ASSEMBLY POINT IS:

Fire assembly point 32

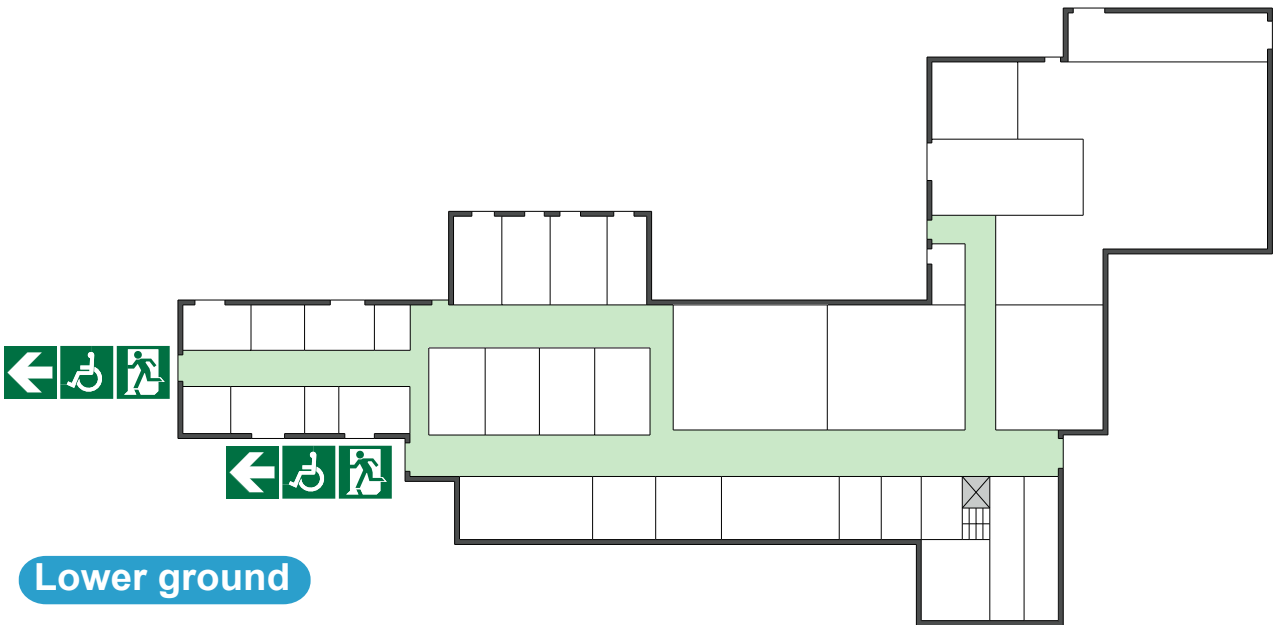
First



Ground



Lower ground



Accessible final exit



Safe refuge



IN CASE OF FIRE



Operate nearest fire alarm call point



Telephone internal emergency number 888 or 0800 526966 if using outside line or mobile phone. In the event of a delay call 999 for the Fire Service giving the correct location of the building.



Do not attack the fire with extinguisher unless trained to do so.

ON HEARING THE ALARM



Evacuate the building and go to the assembly point. Your assembly point is :-

Assembly point 32



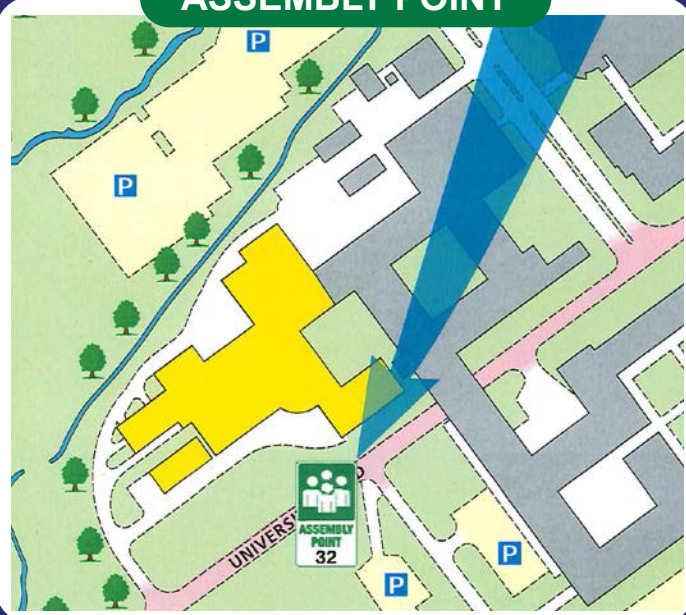
When alarm is given :- do not panic, do not run.



Leave the building following fire emergency exit signs.

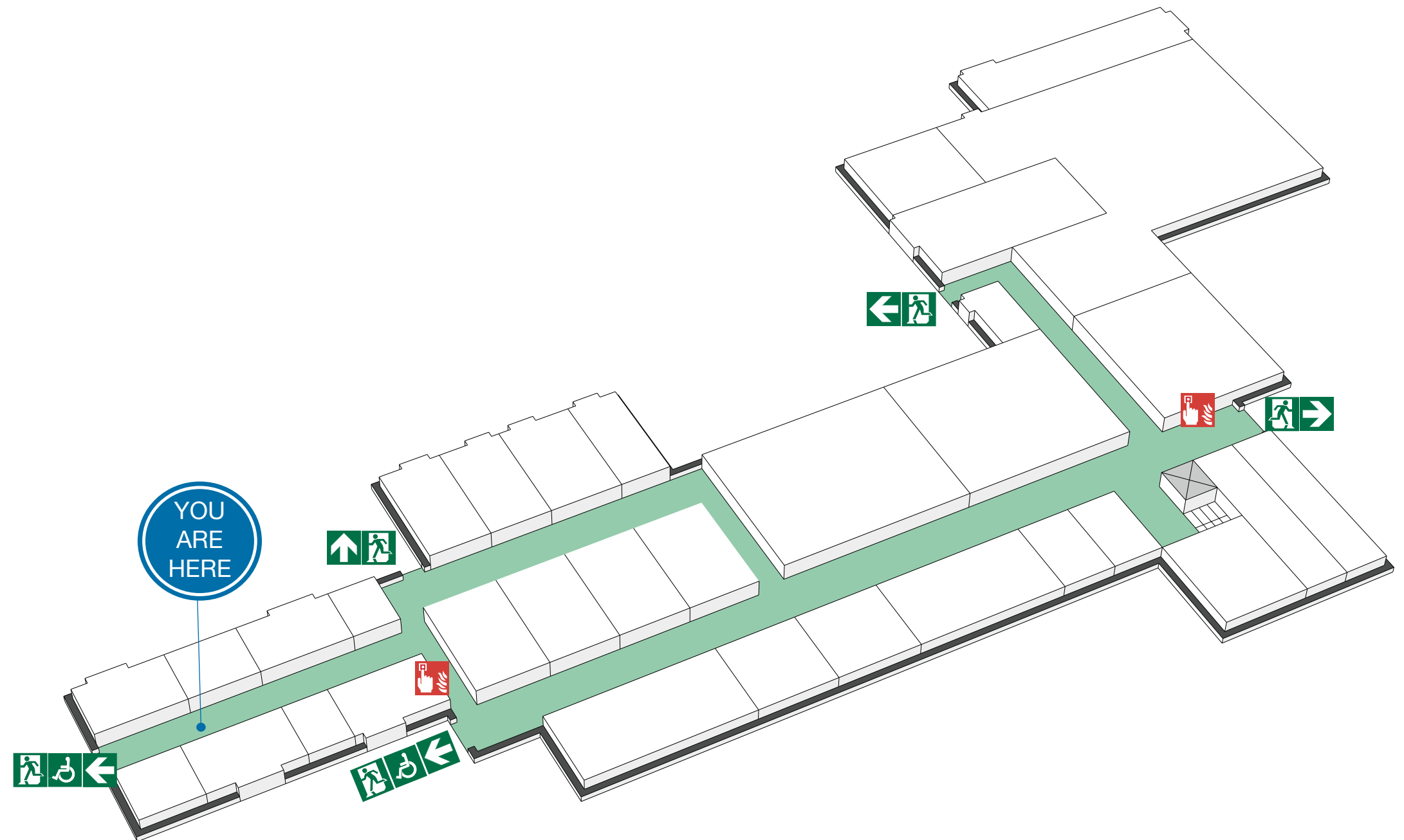
DO NOT re-enter the building until told to do so by either the Fire Marshal, Loughborough University Security or the Fire Service.

ASSEMBLY POINT



FIRE ESCAPE PLAN

LOUGHBOROUGH UNIVERSITY
STEWART MILLER - LOWER GROUND FLOOR



Fire alarm call point



Wheelchair accessible exit



Fire exit

Fire escape route



Assembly point



Safe refuge



Lift



IN CASE OF FIRE



Operate nearest fire alarm call point



Telephone internal emergency number 888 or 0800 526966 if using outside line or mobile phone. In the event of a delay call 999 for the Fire Service giving the correct location of the building.



Do not attack the fire with extinguisher unless trained to do so.

ON HEARING THE ALARM



Evacuate the building and go to the assembly point. Your assembly point is :-

Assembly point 32



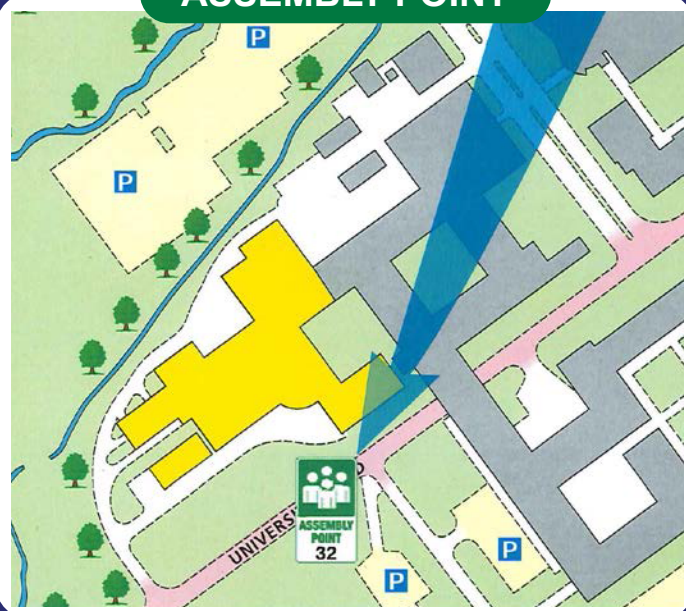
When alarm is given :- do not panic, do not run.



Leave the building following fire emergency exit signs.

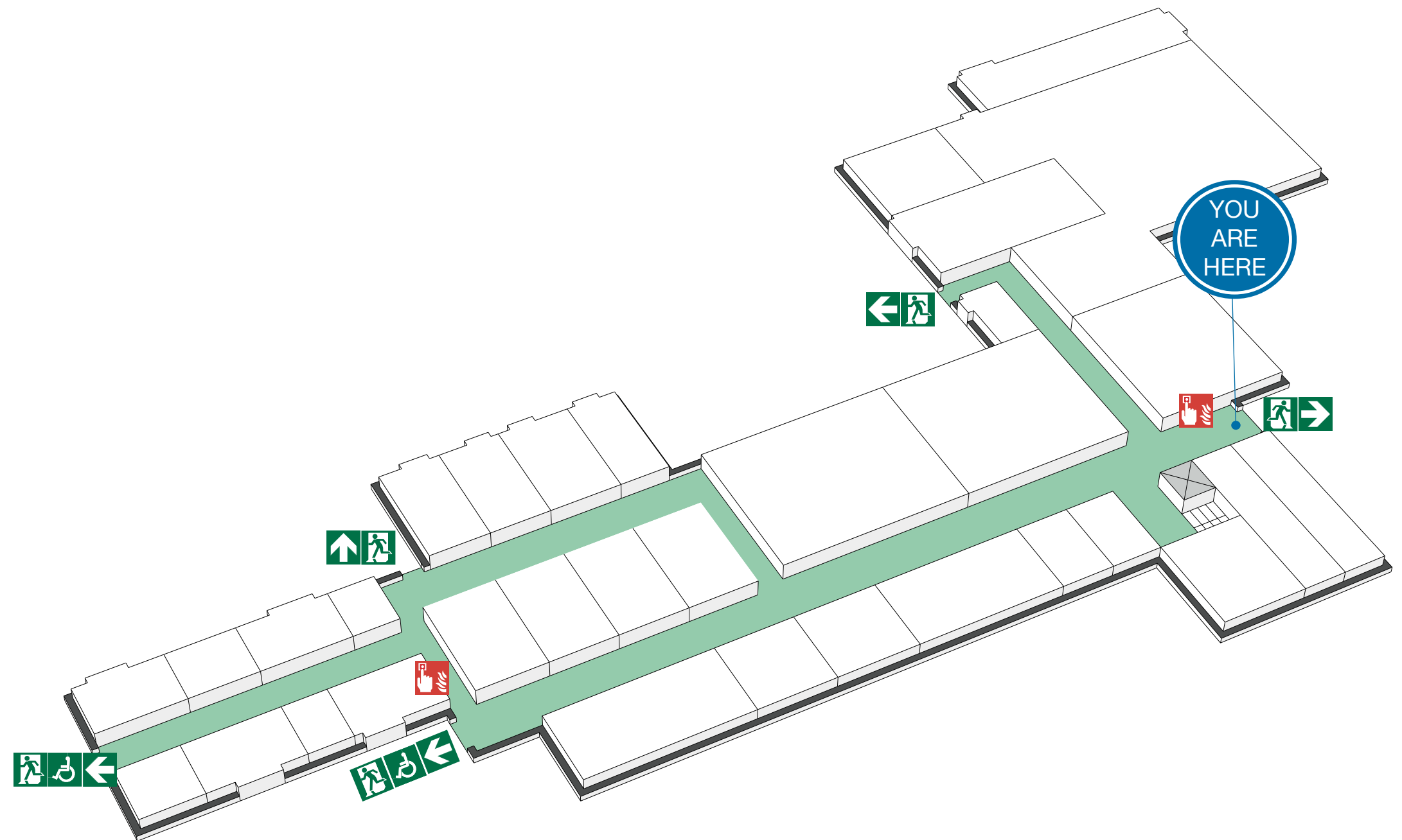
DO NOT re-enter the building until told to do so by either the Fire Marshal, Loughborough University Security or the Fire Service.

ASSEMBLY POINT



FIRE ESCAPE PLAN

LOUGHBOROUGH UNIVERSITY
STEWART MILLER - LOWER GROUND FLOOR



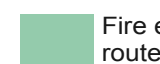
Fire alarm call point



Wheelchair accessible exit



Fire exit



Fire escape route



Assembly point



Safe refuge



Lift



IN CASE OF FIRE



Operate nearest fire alarm call point



Telephone internal emergency number 888 or 0800 526966 if using outside line or mobile phone. In the event of a delay call 999 for the Fire Service giving the correct location of the building.



Do not attack the fire with extinguisher unless trained to do so.

ON HEARING THE ALARM



Evacuate the building and go to the assembly point. Your assembly point is :-

Assembly point 32



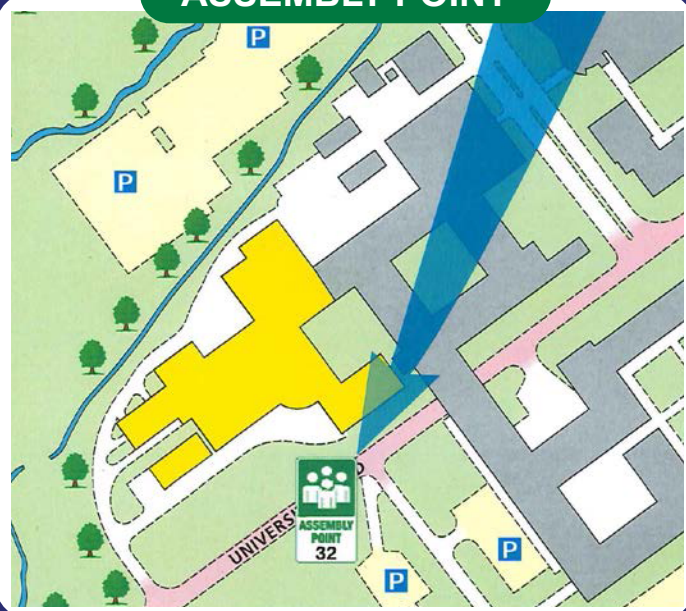
When alarm is given :- do not panic, do not run.



Leave the building following fire emergency exit signs.

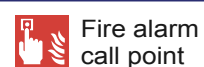
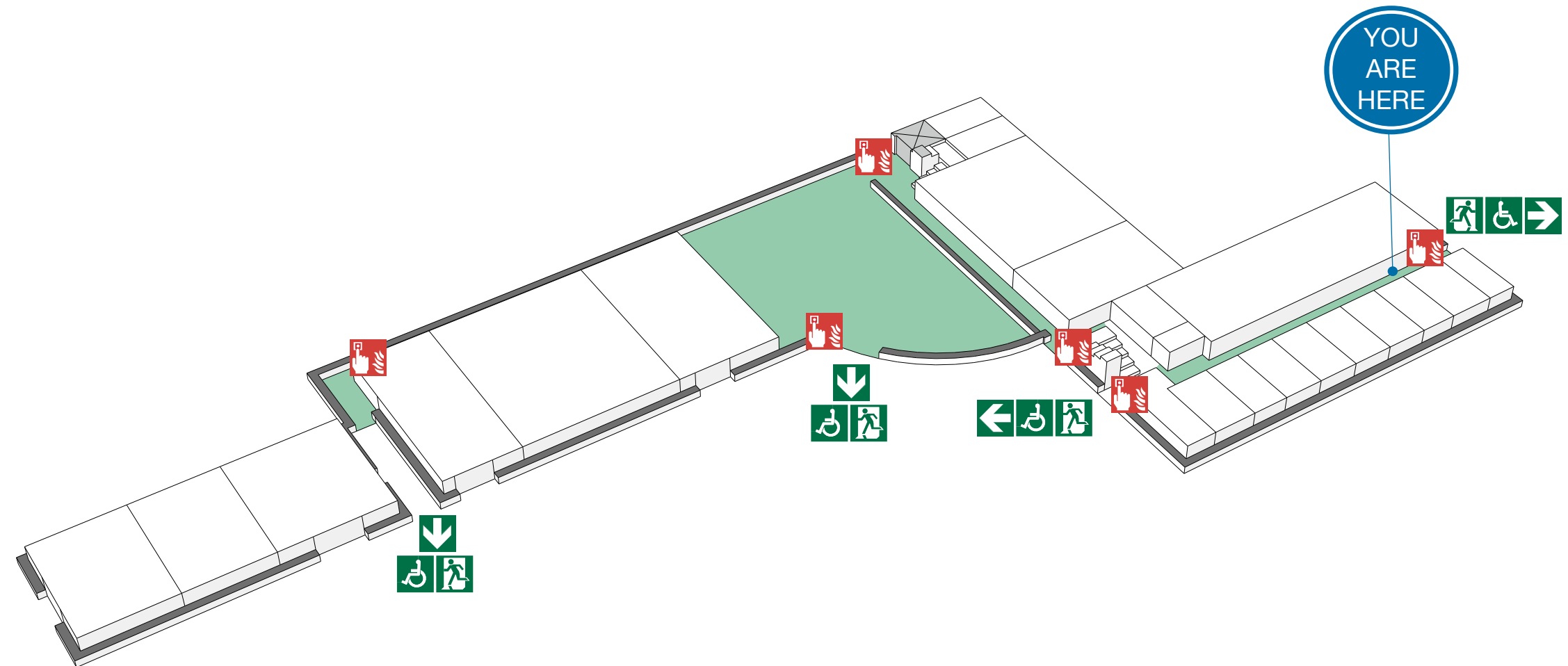
DO NOT re-enter the building until told to do so by either the Fire Marshal, Loughborough University Security or the Fire Service.

ASSEMBLY POINT



FIRE ESCAPE PLAN

LOUGHBOROUGH UNIVERSITY
STEWART MILLER - GROUND FLOOR



Fire alarm call point



Wheelchair accessible exit



Fire exit



Fire escape route



Assembly point



Safe refuge



Lift



IN CASE OF FIRE



Operate nearest fire alarm call point



Telephone internal emergency number 888 or 0800 526966 if using outside line or mobile phone. In the event of a delay call 999 for the Fire Service giving the correct location of the building.



Do not attack the fire with extinguisher unless trained to do so.

ON HEARING THE ALARM



Evacuate the building and go to the assembly point. Your assembly point is :-

Assembly point 32



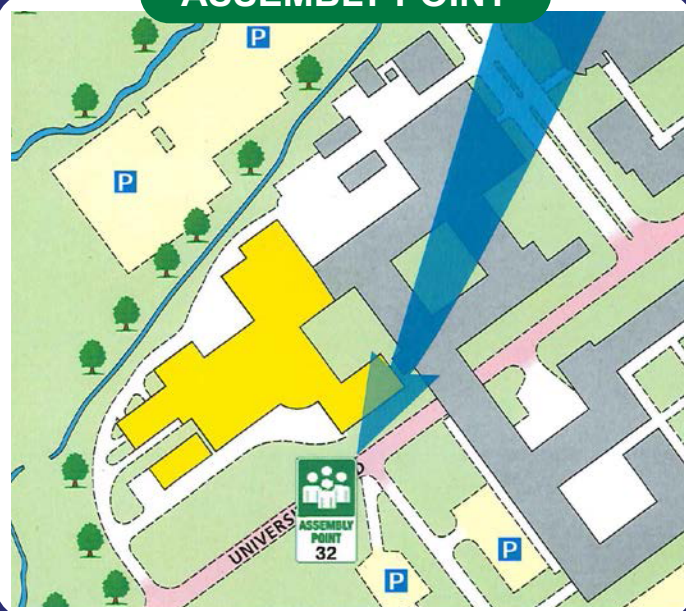
When alarm is given :- do not panic, do not run.



Leave the building following fire emergency exit signs.

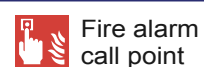
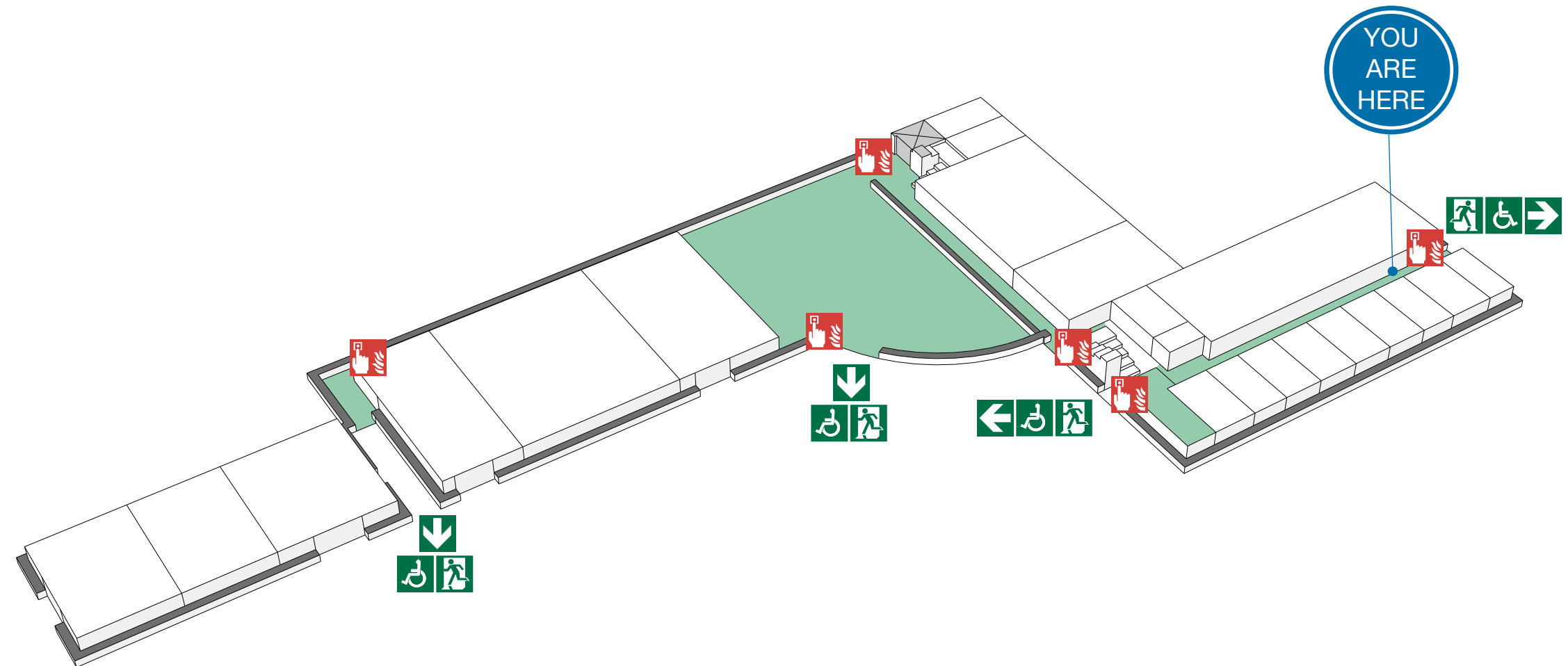
DO NOT re-enter the building until told to do so by either the Fire Marshal, Loughborough University Security or the Fire Service.

ASSEMBLY POINT



FIRE ESCAPE PLAN

LOUGHBOROUGH UNIVERSITY
STEWART MILLER - GROUND FLOOR



Fire alarm call point



Wheelchair accessible exit



Fire exit



Fire escape route



Assembly point



Safe refuge



Lift

FIRE ESCAPE PLAN

LOUGHBOROUGH UNIVERSITY
STEWART MILLER - FIRST FLOOR



IN CASE OF FIRE



Operate nearest fire alarm call point



Telephone internal emergency number 888 or 0800 526966 if using outside line or mobile phone. In the event of a delay call 999 for the Fire Service giving the correct location of the building.



Do not attack the fire with extinguisher unless trained to do so.

ON HEARING THE ALARM



Evacuate the building and go to the assembly point. Your assembly point is :-

Assembly point 32



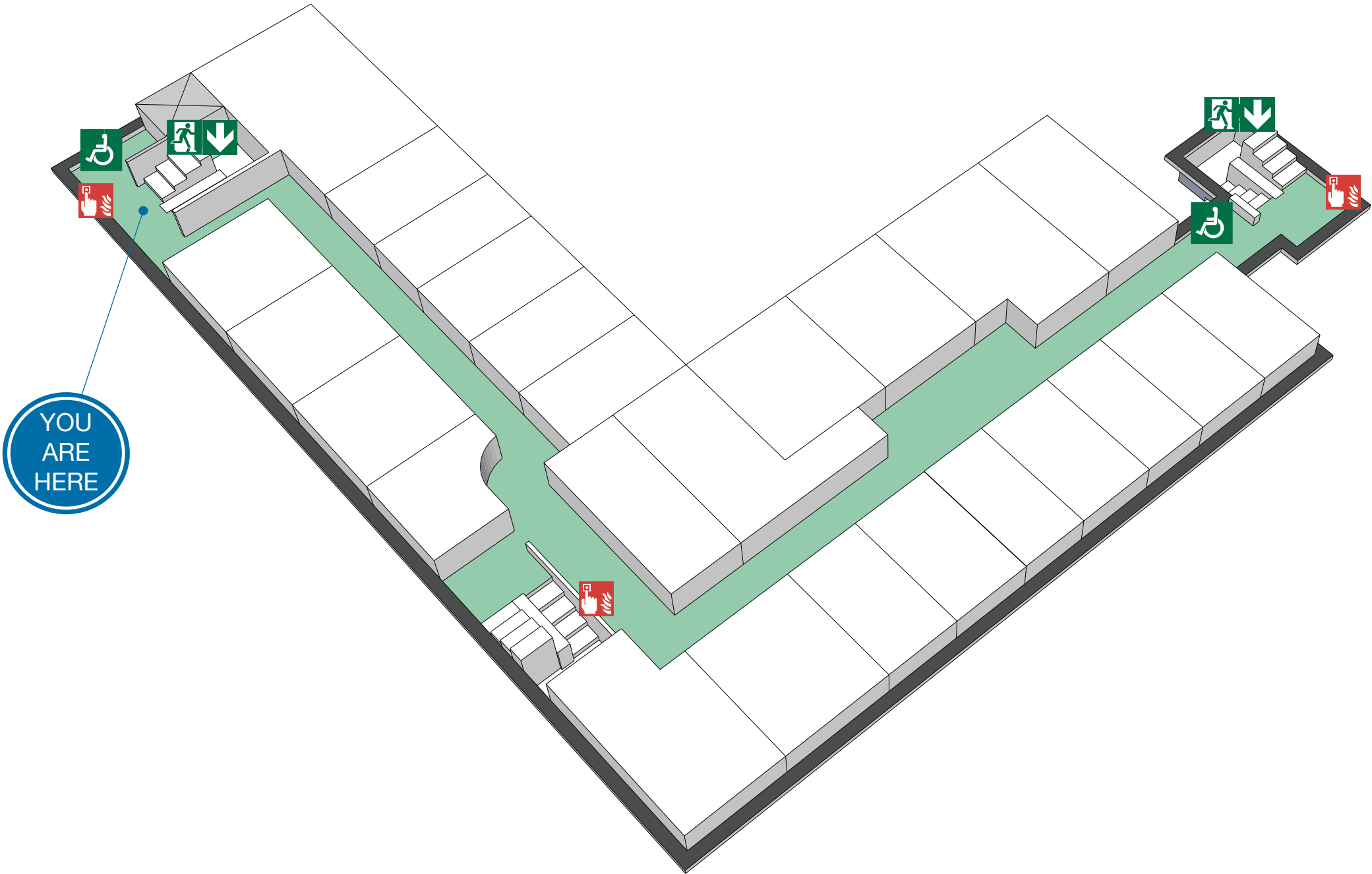
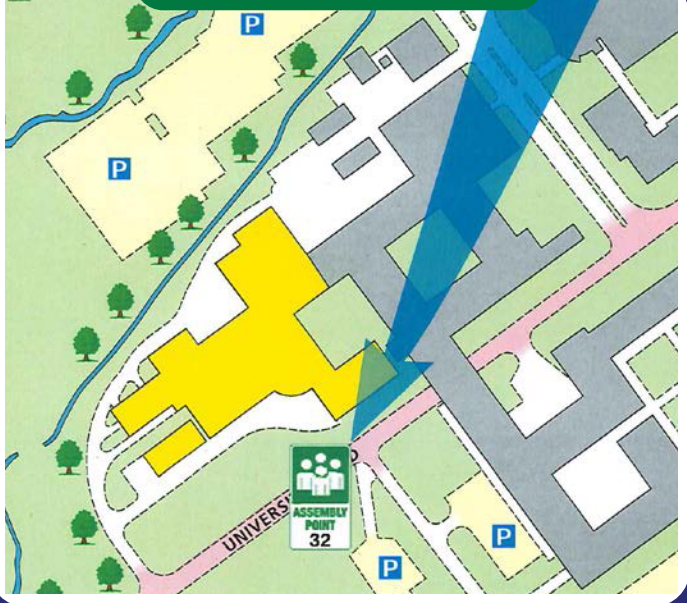
When alarm is given :- do not panic, do not run.



Leave the building following fire emergency exit signs.

DO NOT re-enter the building until told to do so by either the Fire Marshal, Loughborough University Security or the Fire Service.

ASSEMBLY POINT



YOU
ARE
HERE



Fire alarm call point



Wheelchair accessible exit



Fire exit



Fire escape route



Assembly point



Safe refuge



Lift

FIRE ESCAPE PLAN

LOUGHBOROUGH UNIVERSITY
STEWART MILLER - FIRST FLOOR



IN CASE OF FIRE



Operate nearest fire alarm call point



Telephone internal emergency number 888 or 0800 526966 if using outside line or mobile phone. In the event of a delay call 999 for the Fire Service giving the correct location of the building.



Do not attack the fire with extinguisher unless trained to do so.

ON HEARING THE ALARM



Evacuate the building and go to the assembly point. Your assembly point is :-

Assembly point 32



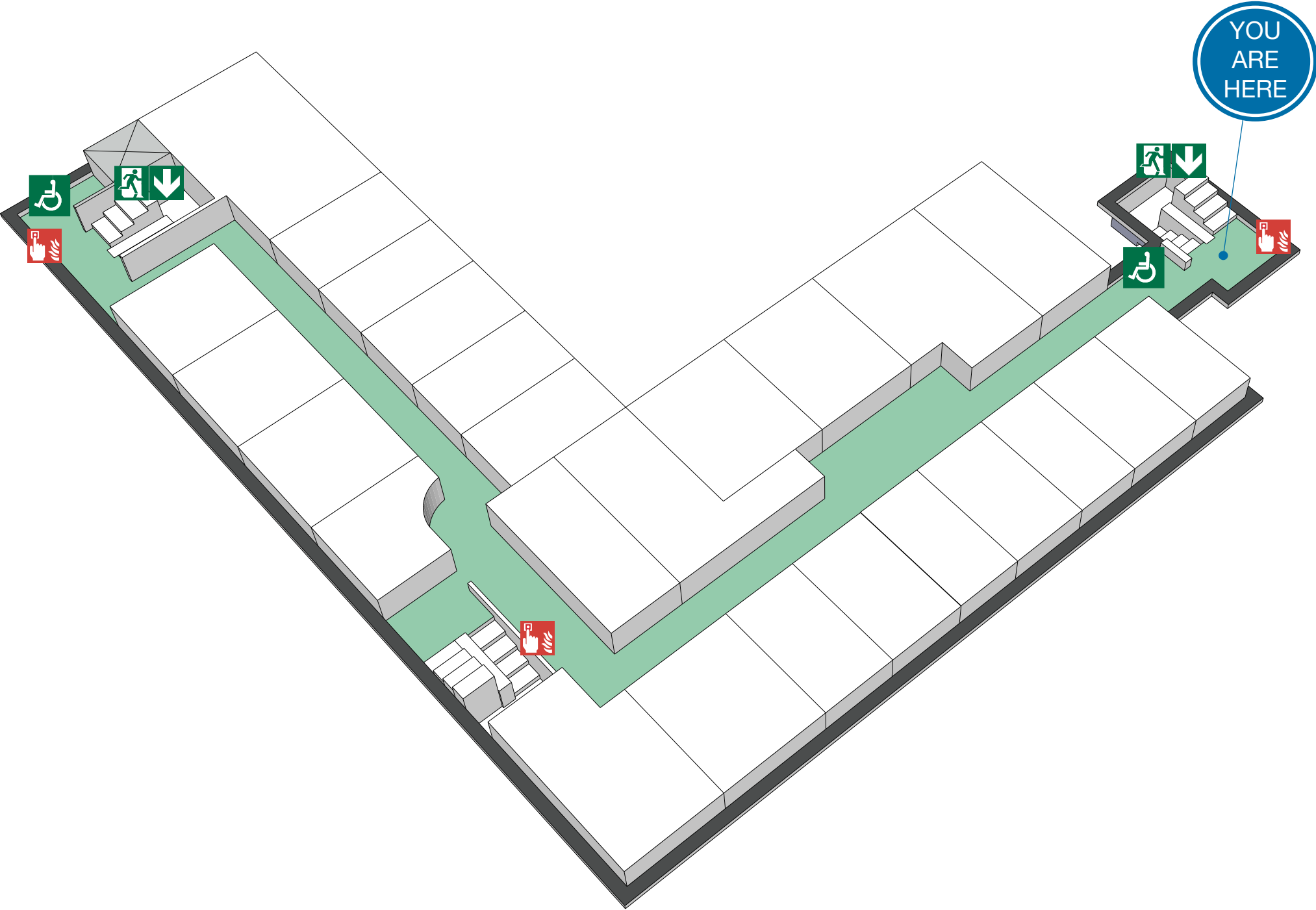
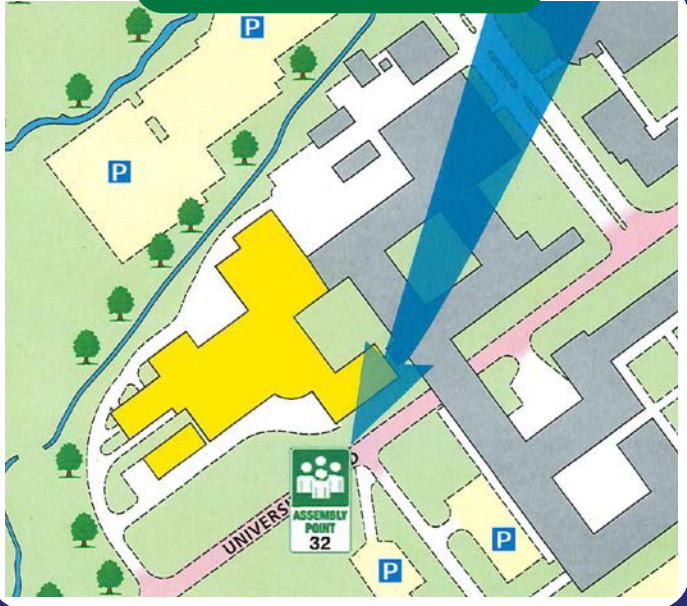
When alarm is given :- do not panic, do not run.



Leave the building following fire emergency exit signs.

DO NOT re-enter the building until told to do so by either the Fire Marshal, Loughborough University Security or the Fire Service.

ASSEMBLY POINT



Fire alarm call point



Wheelchair accessible exit



Fire exit



Fire escape route



Assembly point



Safe refuge



Lift