

Loughborough University London

Reviewed: May 2023

Purpose:

The purpose of a Generic Emergency Evacuation Plan (GEEP) is to enable visitors to the building with restricted mobility or those who may not be able to evacuate unaided to become familiar with the layout, evacuation procedures, available equipment, and communication devices.

If you feel that this document does not provide you with sufficient information or that you require further assistance, please contact the Loughborough University Fire Officer on 01509 228569.

The building:

Loughborough in London building comprises of 5 floors all floors are accessible by using the lifts.

Safe refuge areas are available in some stair cores on all floors and provide a EVC System (Emergency Voice Communication System) which links directly to the security at reception (see attached floor plan).

Several accessible fire exits are available at ground level.

Action required on hearing the fire alarm:

If able, you should leave the building immediately by the nearest fire exit (see attached floor plan) and report to the assigned assembly point for the building.

If you are unable to evacuate the building unaided, please proceed to one of the safe refuges located in each stair core.

An EVC System (Emergency Voice Communication System) is available in each safe refuge. Use this to contact the security team and notify them of your location, details of which are printed on the front of the panel. Full details on how to use the emergency call point are also provided in the safe refuge.

Other recommendations:

It is recommended that all visitors to the Loughborough in London Building should familiarise themselves with the fire alarm signals and floor layout. Floor plans and evacuation equipment locations have been provided with this document.

Equipment provided:

Accessible fire exits are available on the ground floor of the building.

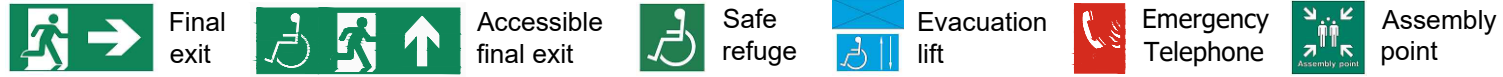
Safe refuge areas with EVC System (Emergency Voice Communication System) are available in each stair core on all 4 upper floor levels.



Your Assembly Point Is:

Monday to Friday 08:00-18:00hrs Assembly Point **B**,
Otherwise Assembly Point **D**

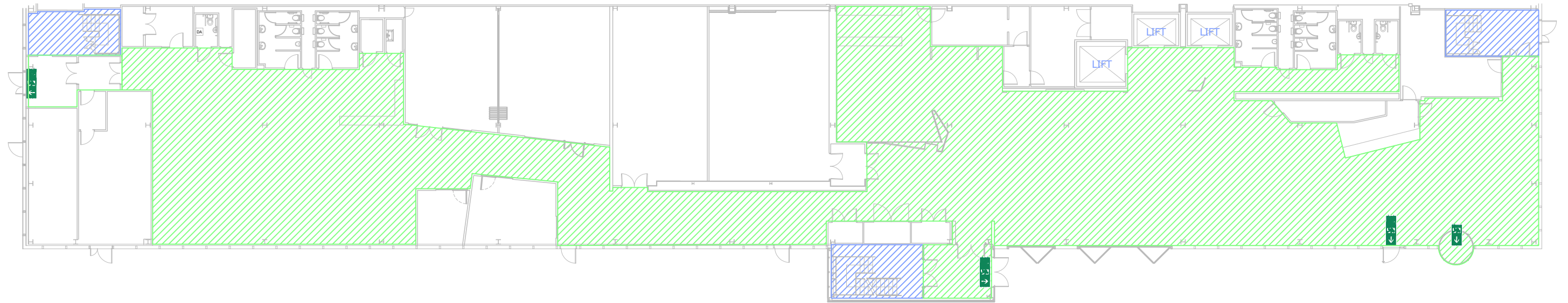


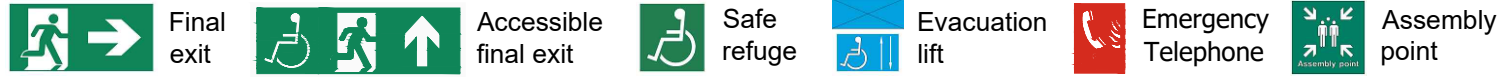


390 - LOUGHBOROUGH UNIVERSITY LONDON

GROUND FLOOR

GENERIC EMERGENCY EVACUATION PLAN (GEEP)

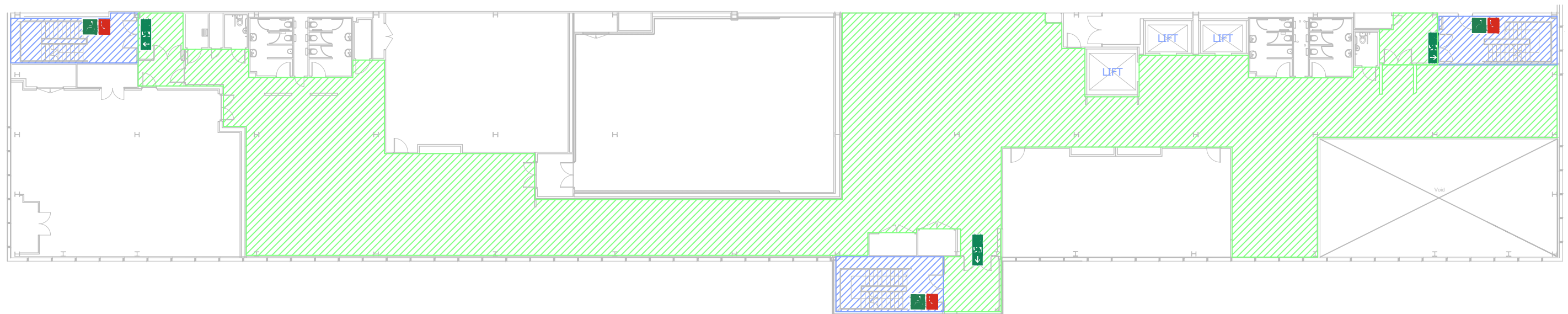


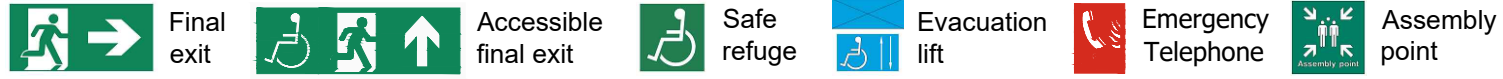


390 - LOUGHBOROUGH UNIVERSITY LONDON

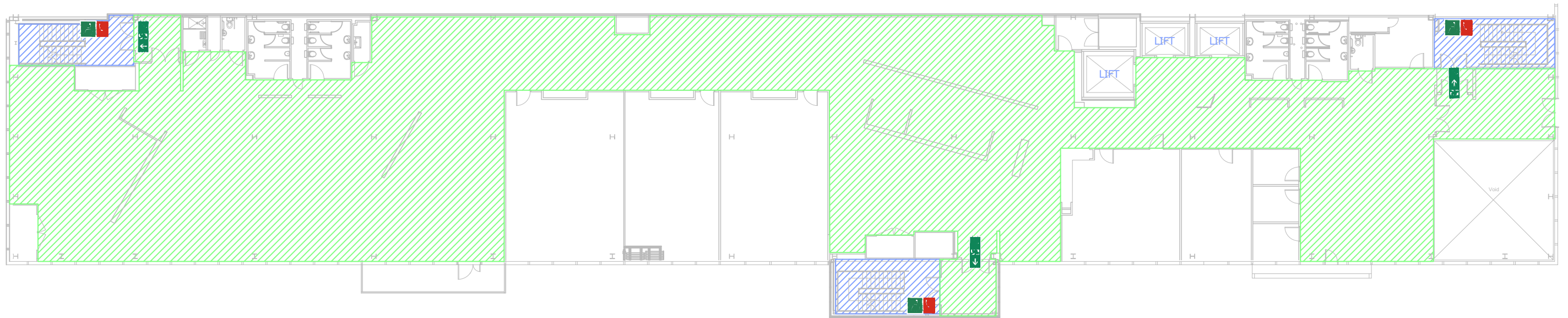
FIRST FLOOR

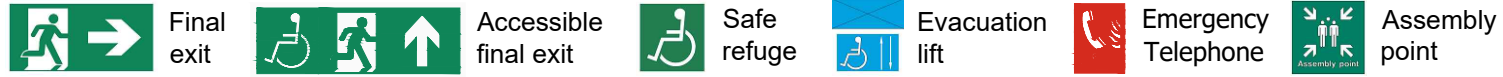
GENERIC EMERGENCY EVACUATION PLAN (GEEP)





390 - LOUGHBOROUGH UNIVERSITY LONDON
SECOND FLOOR
GENERIC EMERGENCY EVACUATION PLAN (GEEP)

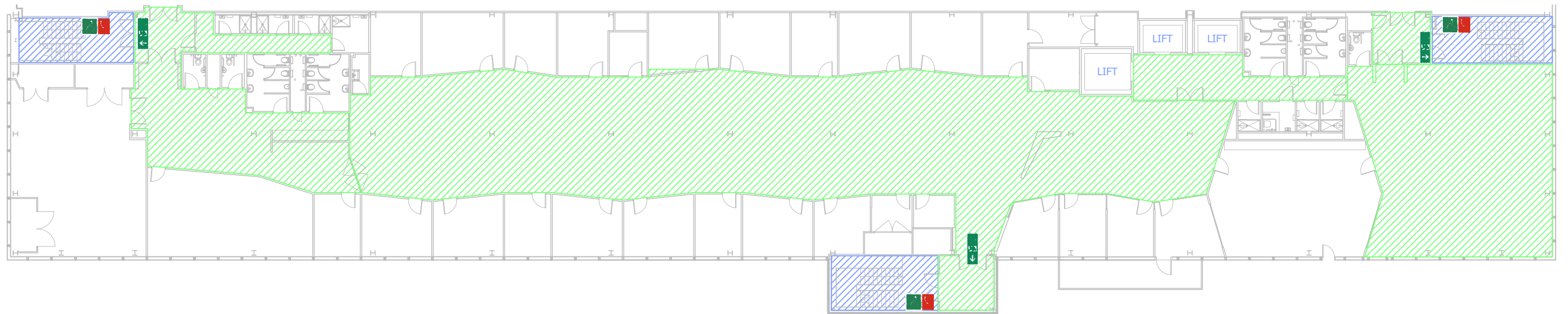


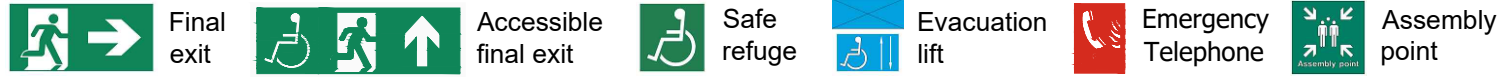


390 - LOUGHBOROUGH UNIVERSITY LONDON

THIRD FLOOR

GENERIC EMERGENCY EVACUATION PLAN (GEEP)





390 - LOUGHBOROUGH UNIVERSITY LONDON

FOURTH FLOOR

GENERIC EMERGENCY EVACUATION PLAN (GEEP)

