

EDWARD BARNESLEY BUILDING

LAST UPDATED 17th January 2014

Purpose:

The purpose of a Generic Emergency Evacuation Plan (GEEP) is to enable visitors to the building with restricted mobility or those who may not be able to evacuate unaided to become familiar with the layout, evacuation procedures, available equipment and communication devices.

If you feel that this document does not provide you with sufficient information or that you require further assistance, please contact the Loughborough University Fire Officer on 01509 222182.

The building:

The Edward Barnesley Building is comprised of 3 floors. All floors are accessible via the lift to the left of the main entrance. This lift is not to be used in an emergency. Platform lifts to aid accessibility are available on floors 1 and 2.

Ground floor has several accessible emergency exits that lead to the fire assembly point.

Floors 1 and 2 have accessible fire exits via the central corridors. Safe refuge areas are located on these floors and provide a disabled emergency call point which links directly to security (see attached floor plan). Emergency egress is also available on ground floor via the Cope Auditorium.

Action required on hearing the fire alarm:

If able, you should leave the building immediately by the nearest fire exit (see attached floor plan) and report to the assigned assembly point for the building.

If you are unable to evacuate the building unaided, please proceed to one of the safe refuges located on floors 1 and 2 (see attached floor plan).

Other recommendations:

It is recommended that all visitors to the Edward Barnesley Building should familiarise themselves with the fire alarm signals and floor layout. Floor plans and evacuation equipment locations have been provided with this document.

Equipment provided:

In addition to the general alarm, safe refuge areas are available on floor 1 and 2.

Accessible fire exits are available on the ground floor of the building (see attached plans), and these are to be used as primary exits from building.



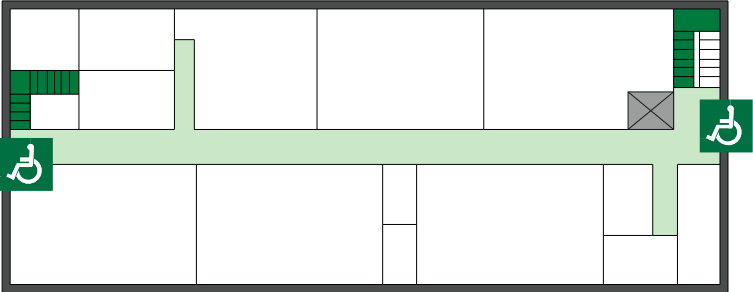
The Deaf Alerter system is installed in this building. If you would like access to a Deaf Alerter device, please contact the University Fire Officer on 01509 222182.



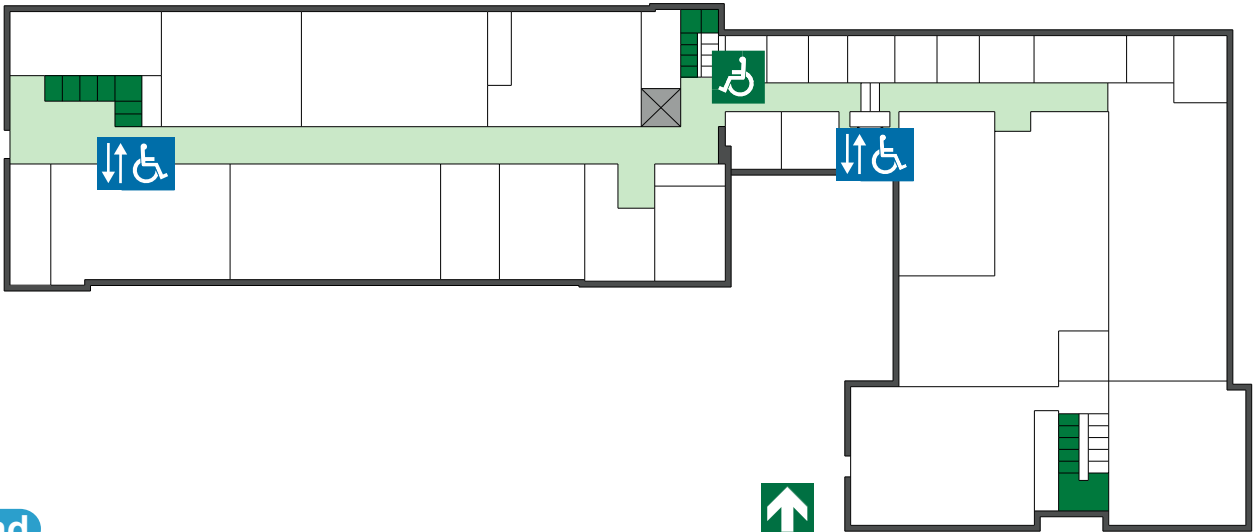
YOUR ASSEMBLY POINT IS:

Fire assembly point 2 - Opposite main entrance

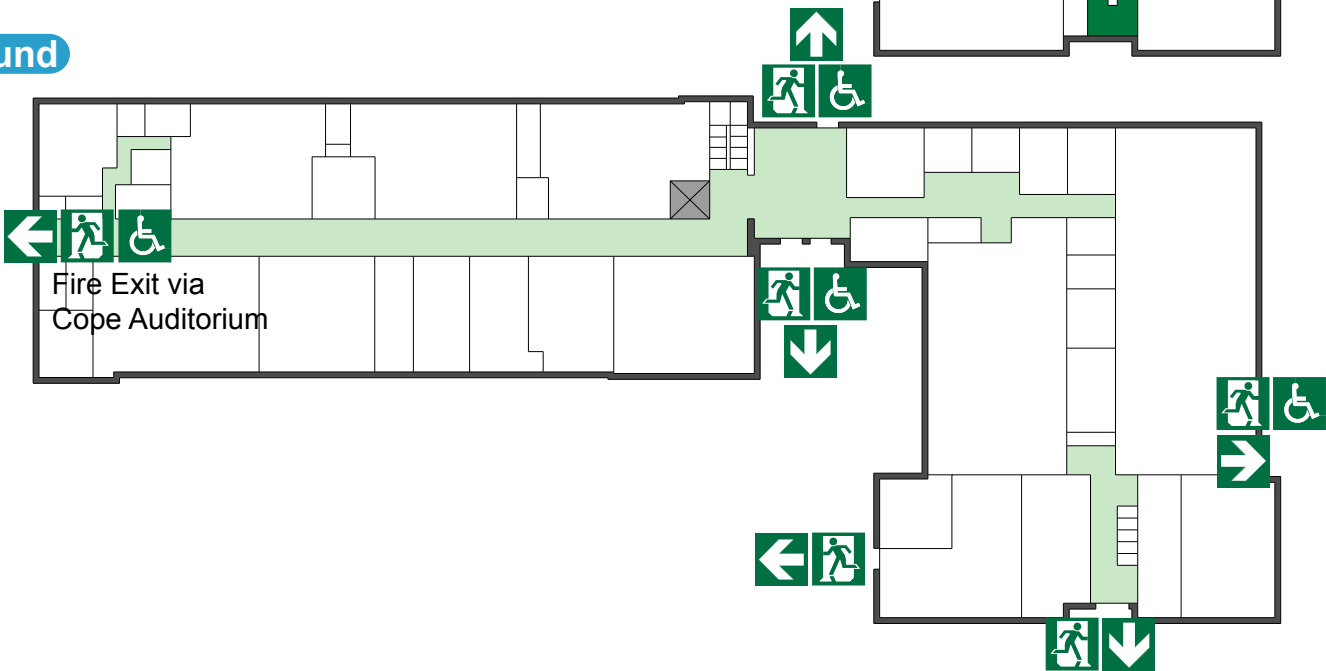
Second



First



Ground



Accessible final exit



Wheelchair lift



Safe refuge



IN CASE OF FIRE



Operate nearest fire alarm call point



Telephone internal emergency number 888 or 0800 526966 if using outside line or mobile phone. In the event of a delay call 999 for the Fire Service giving the correct location of the building.



Do not attack the fire with extinguisher unless trained to do so.

ON HEARING THE ALARM



Evacuate the building and go to the assembly point. Your assembly point is :-

**Opposite main entrance
Assembly point 2**



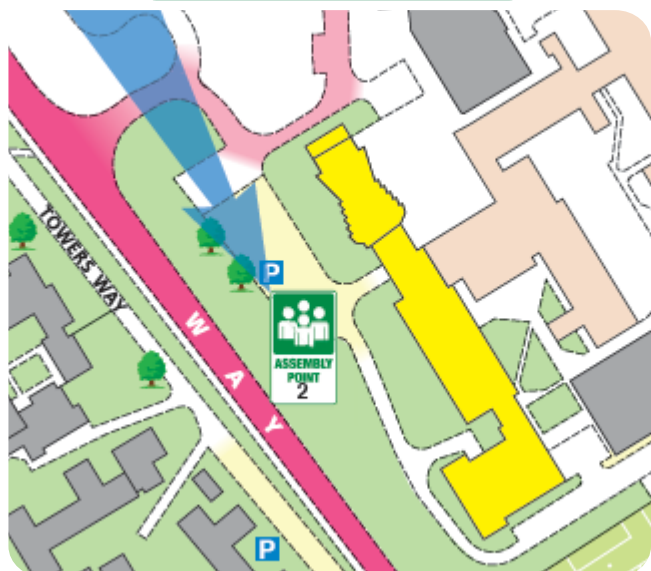
When alarm is given :- do not panic, do not run.



Leave the building following fire emergency exit signs.

DO NOT re-enter the building until told to do so by either the Fire Marshal, Loughborough University Security or the Fire Service.

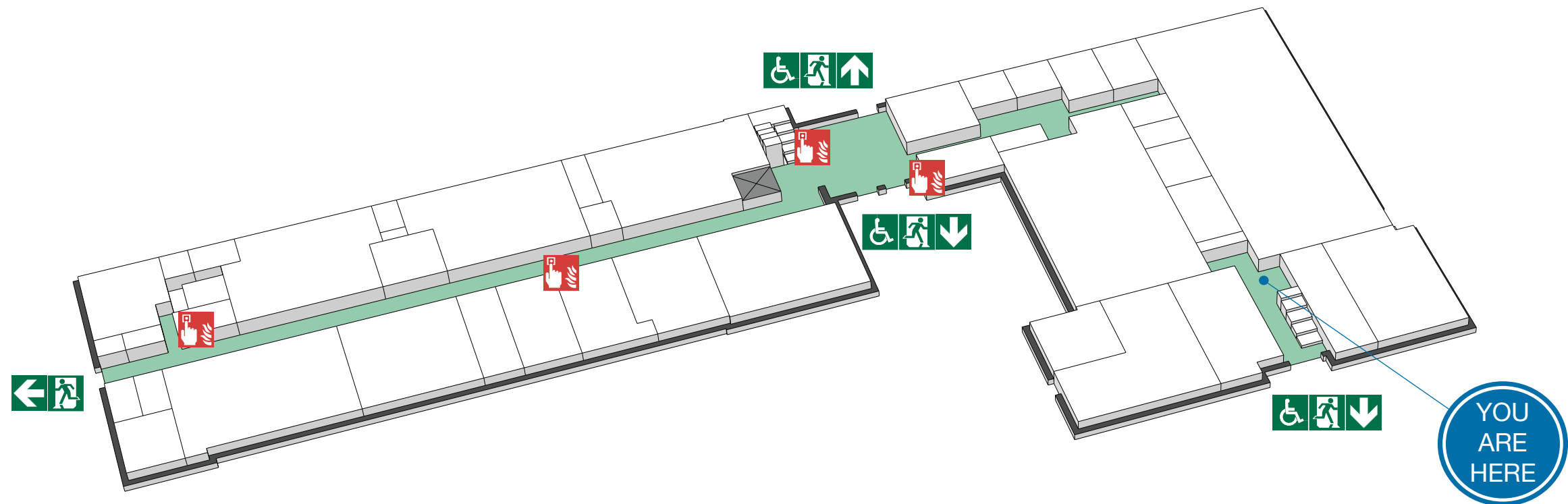
ASSEMBLY POINT



FIRE ESCAPE PLAN



LOUGHBOROUGH UNIVERSITY
EDWARD BARNESLEY - GROUND FLOOR



The Deaf Alerter system is installed in this building.
Please contact the University Fire Officer on 01509 222182
for further advice.



Fire alarm call point



Wheelchair accessible exit



Fire exit



Fire escape route



Assembly point



Safe refuge



Lift



IN CASE OF FIRE



Operate nearest fire alarm call point



Telephone internal emergency number 888 or 0800 526966 if using outside line or mobile phone. In the event of a delay call 999 for the Fire Service giving the correct location of the building.



Do not attack the fire with extinguisher unless trained to do so.

ON HEARING THE ALARM



Evacuate the building and go to the assembly point. Your assembly point is :-

**Opposite main entrance
Assembly point 2**



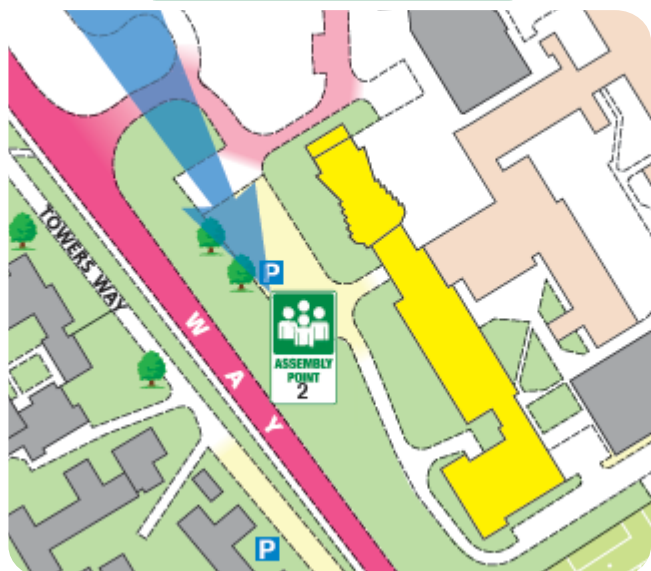
When alarm is given :- do not panic, do not run.



Leave the building following fire emergency exit signs.

DO NOT re-enter the building until told to do so by either the Fire Marshal, Loughborough University Security or the Fire Service.

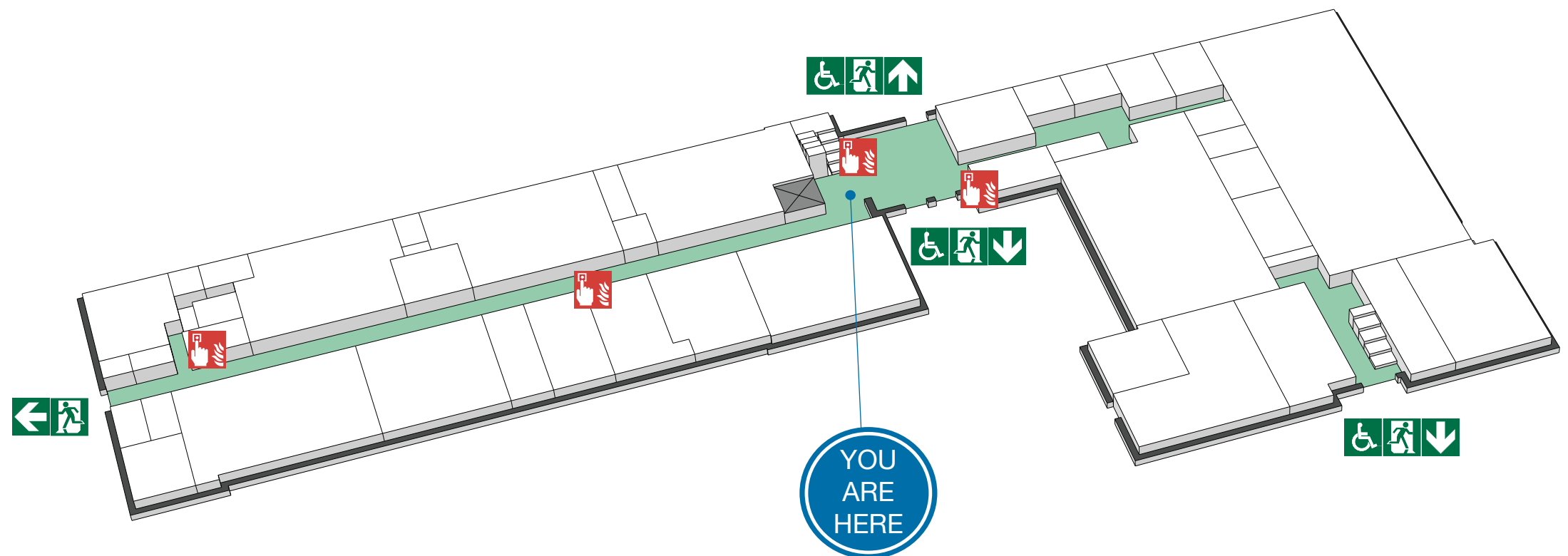
ASSEMBLY POINT



FIRE ESCAPE PLAN



LOUGHBOROUGH UNIVERSITY
EDWARD BARNESLEY - GROUND FLOOR



The Deaf Alerter system is installed in this building.
Please contact the University Fire Officer on 01509 222182
for further advice.



Fire alarm call point



Wheelchair accessible exit



Fire exit



Fire escape route



Assembly point



Safe refuge



Lift



IN CASE OF FIRE



Operate nearest fire alarm call point



Telephone internal emergency number 888 or 0800 526966 if using outside line or mobile phone. In the event of a delay call 999 for the Fire Service giving the correct location of the building.



Do not attack the fire with extinguisher unless trained to do so.

ON HEARING THE ALARM



Evacuate the building and go to the assembly point. Your assembly point is :-

**Opposite main entrance
Assembly point 2**



When alarm is given :- do not panic, do not run.



Leave the building following fire emergency exit signs.

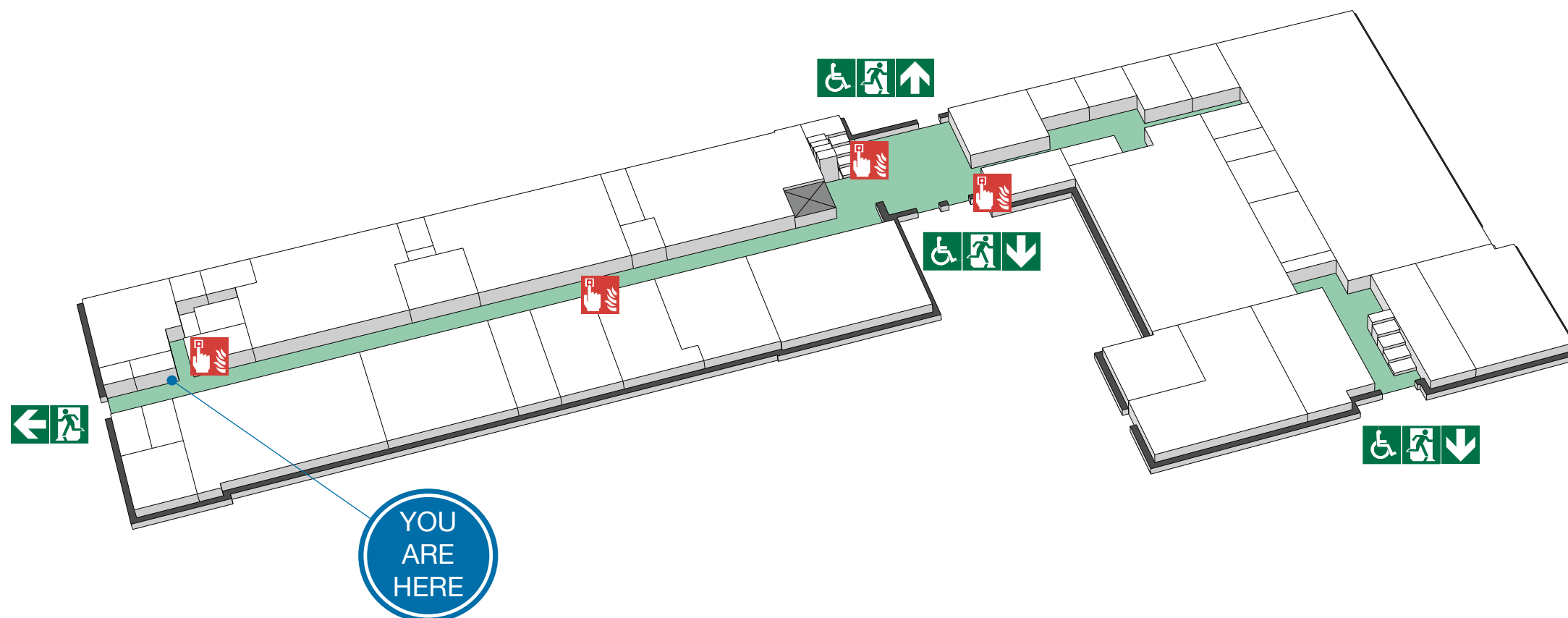
DO NOT re-enter the building until told to do so by either the Fire Marshal, Loughborough University Security or the Fire Service.

ASSEMBLY POINT

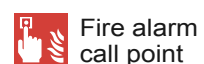


FIRE ESCAPE PLAN

LOUGHBOROUGH UNIVERSITY
EDWARD BARNESLEY - GROUND FLOOR



The Deaf Alerter system is installed in this building.
Please contact the University Fire Officer on 01509 222182
for further advice.



Fire alarm call point



Wheelchair accessible exit



Fire exit



Fire escape route



Assembly point



Safe refuge



Lift



IN CASE OF FIRE



Operate nearest fire alarm call point



Telephone internal emergency number 888 or 0800 526966 if using outside line or mobile phone. In the event of a delay call 999 for the Fire Service giving the correct location of the building.



Do not attack the fire with extinguisher unless trained to do so.

ON HEARING THE ALARM



Evacuate the building and go to the assembly point. Your assembly point is :-

**Opposite main entrance
Assembly point 2**



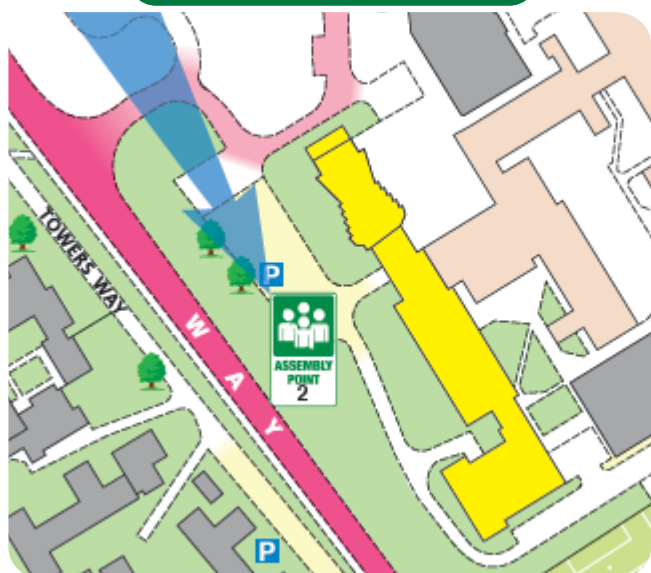
When alarm is given :- do not panic, do not run.



Leave the building following fire emergency exit signs.

DO NOT re-enter the building until told to do so by either the Fire Marshal, Loughborough University Security or the Fire Service.

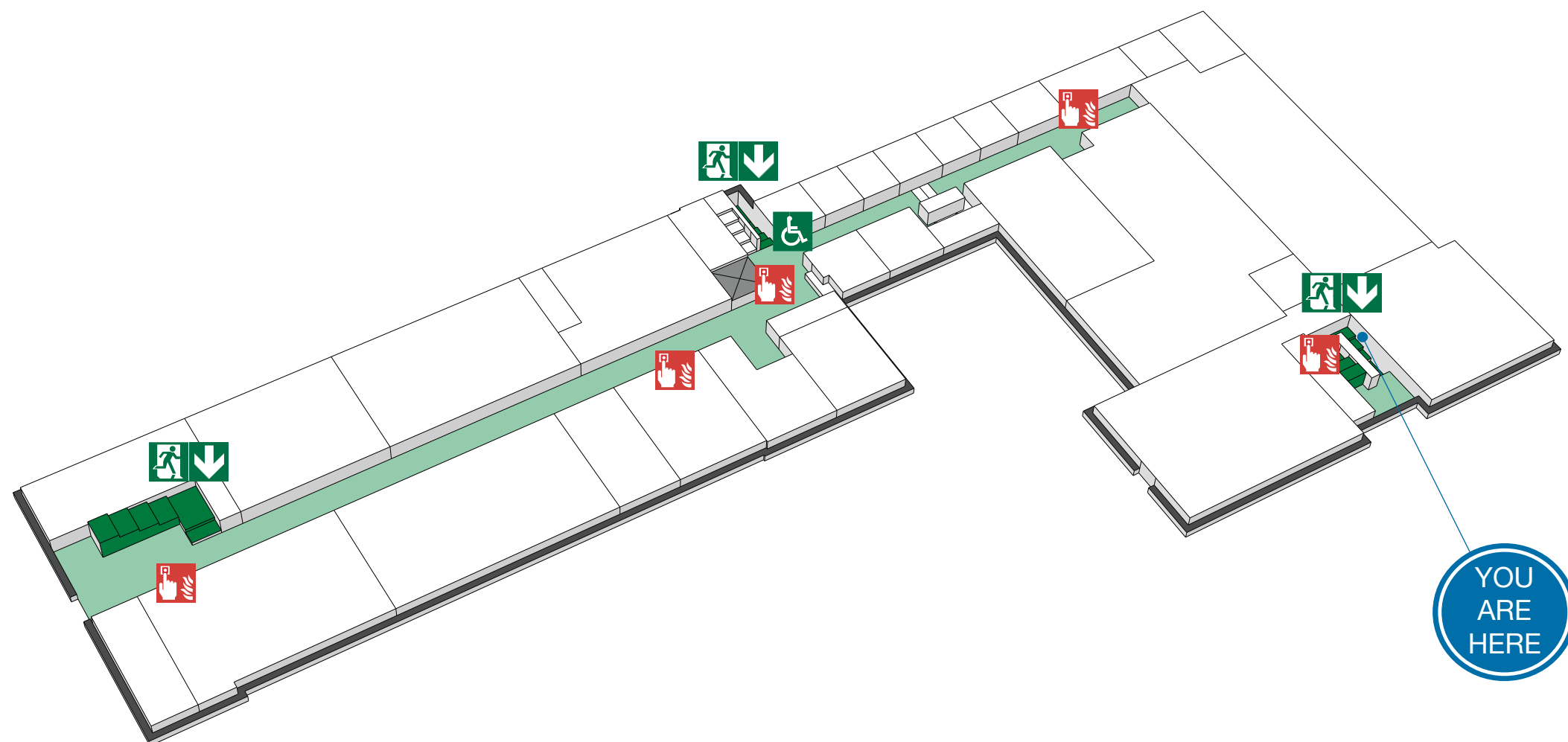
ASSEMBLY POINT



FIRE ESCAPE PLAN



LOUGHBOROUGH UNIVERSITY
EDWARD BARNESLEY - FIRST FLOOR



The Deaf Alerter system is installed in this building.
Please contact the University Fire Officer on 01509 222182
for further advice.



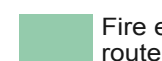
Fire alarm
call point



Wheelchair
accessible exit



Fire
exit



Fire escape
route



Assembly
point



Safe
refuge



Lift



IN CASE OF FIRE



Operate nearest fire alarm call point



Telephone internal emergency number 888 or 0800 526966 if using outside line or mobile phone. In the event of a delay call 999 for the Fire Service giving the correct location of the building.



Do not attack the fire with extinguisher unless trained to do so.

ON HEARING THE ALARM



Evacuate the building and go to the assembly point. Your assembly point is :-

**Opposite main entrance
Assembly point 2**



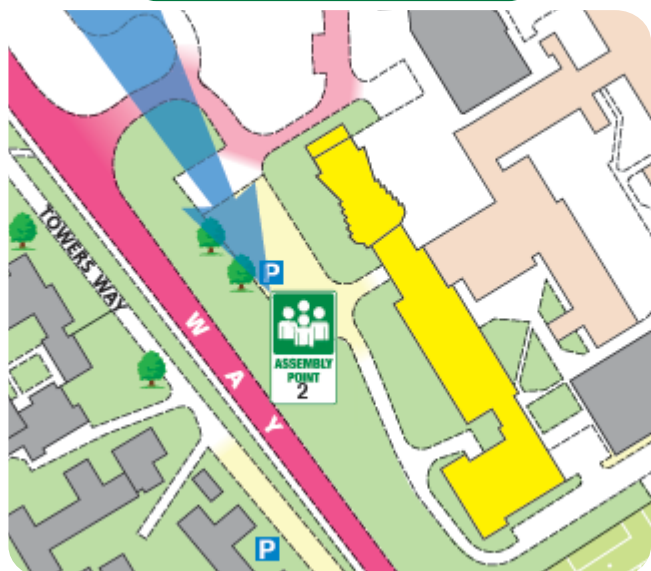
When alarm is given :- do not panic, do not run.



Leave the building following fire emergency exit signs.

DO NOT re-enter the building until told to do so by either the Fire Marshal, Loughborough University Security or the Fire Service.

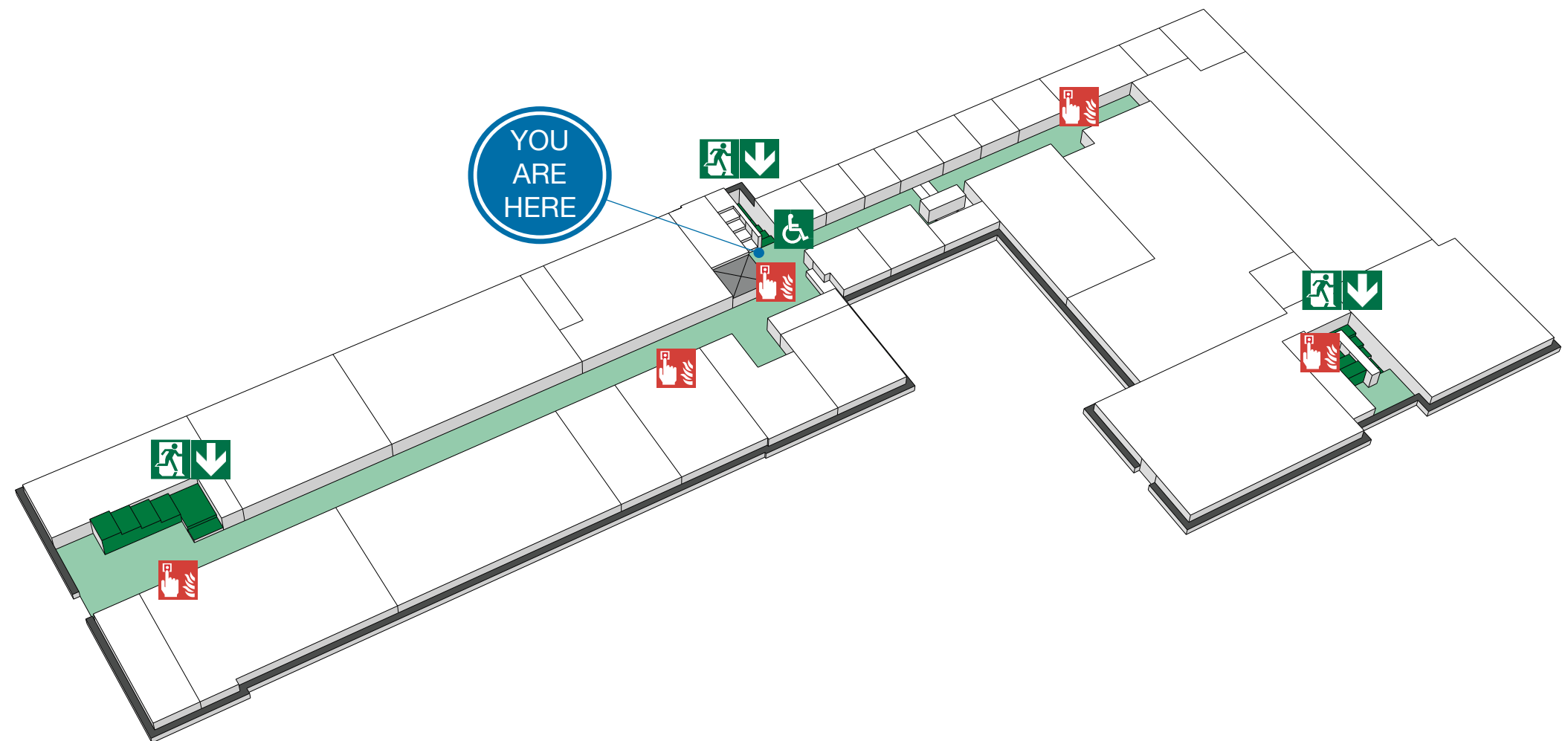
ASSEMBLY POINT



FIRE ESCAPE PLAN



LOUGHBOROUGH UNIVERSITY
EDWARD BARNESLEY - FIRST FLOOR



The Deaf Alerter system is installed in this building.
Please contact the University Fire Officer on 01509 222182
for further advice.



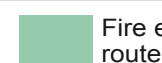
Fire alarm
call point



Wheelchair
accessible exit



Fire
exit



Fire escape
route



Assembly
point



Safe
refuge



Lift



IN CASE OF FIRE



Operate nearest fire alarm call point



Telephone internal emergency number 888 or 0800 526966 if using outside line or mobile phone. In the event of a delay call 999 for the Fire Service giving the correct location of the building.



Do not attack the fire with extinguisher unless trained to do so.

ON HEARING THE ALARM



Evacuate the building and go to the assembly point. Your assembly point is :-

**Opposite main entrance
Assembly point 2**



When alarm is given :- do not panic, do not run.



Leave the building following fire emergency exit signs.

DO NOT re-enter the building until told to do so by either the Fire Marshal, Loughborough University Security or the Fire Service.

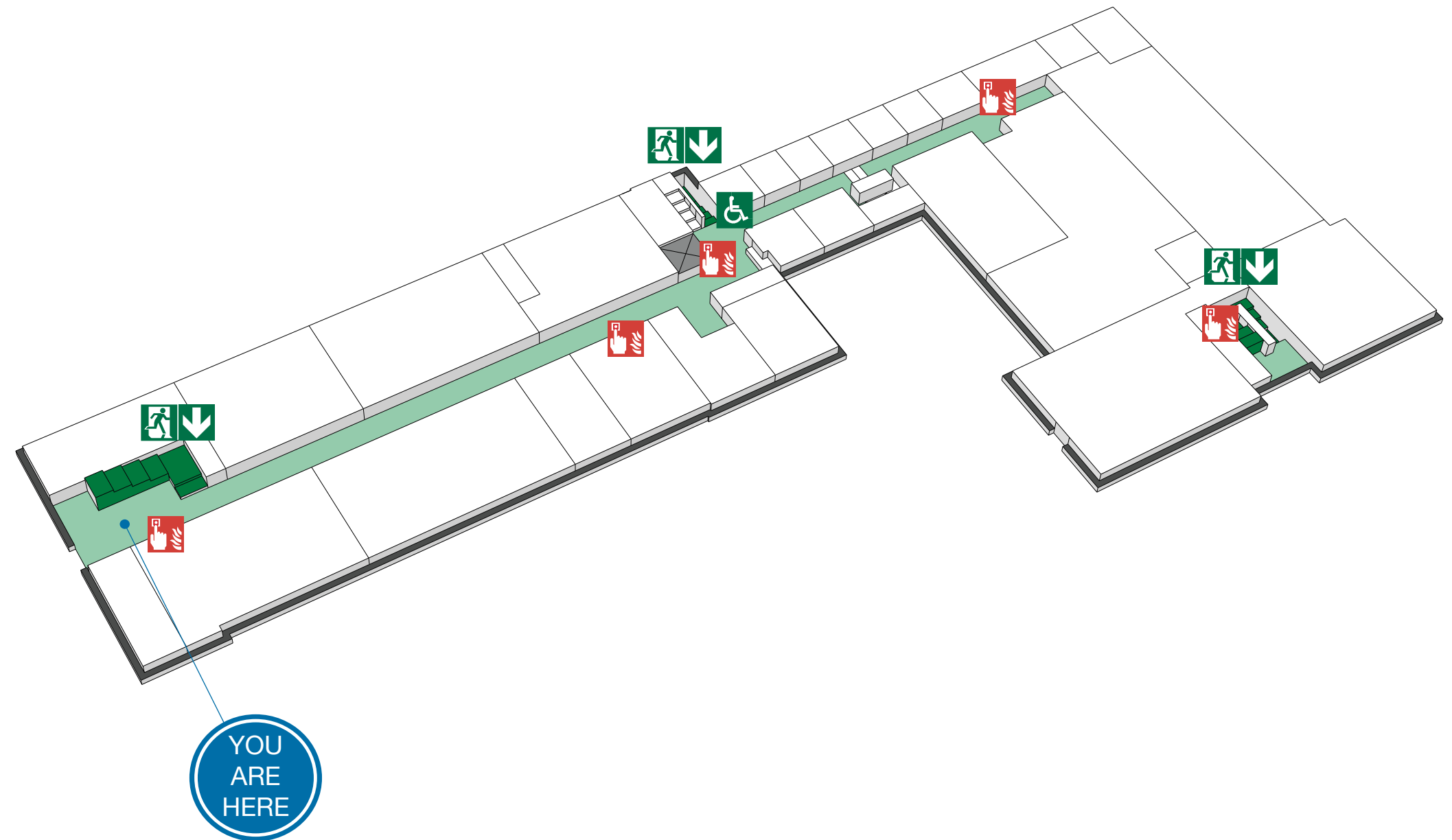
ASSEMBLY POINT



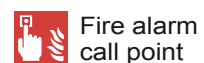
FIRE ESCAPE PLAN



LOUGHBOROUGH UNIVERSITY
EDWARD BARNESLEY - FIRST FLOOR



The Deaf Alerter system is installed in this building.
Please contact the University Fire Officer on 01509 222182
for further advice.



Fire alarm call point



Wheelchair accessible exit



Fire exit



Fire escape route



Assembly point



Safe refuge



Lift



IN CASE OF FIRE



Operate nearest fire alarm call point



Telephone internal emergency number 888 or 0800 526966 if using outside line or mobile phone. In the event of a delay call 999 for the Fire Service giving the correct location of the building.



Do not attack the fire with extinguisher unless trained to do so.

ON HEARING THE ALARM



Evacuate the building and go to the assembly point. Your assembly point is :-

**Opposite main entrance
Assembly point 2**



When alarm is given :- do not panic, do not run.



Leave the building following fire emergency exit signs.

DO NOT re-enter the building until told to do so by either the Fire Marshal, Loughborough University Security or the Fire Service.

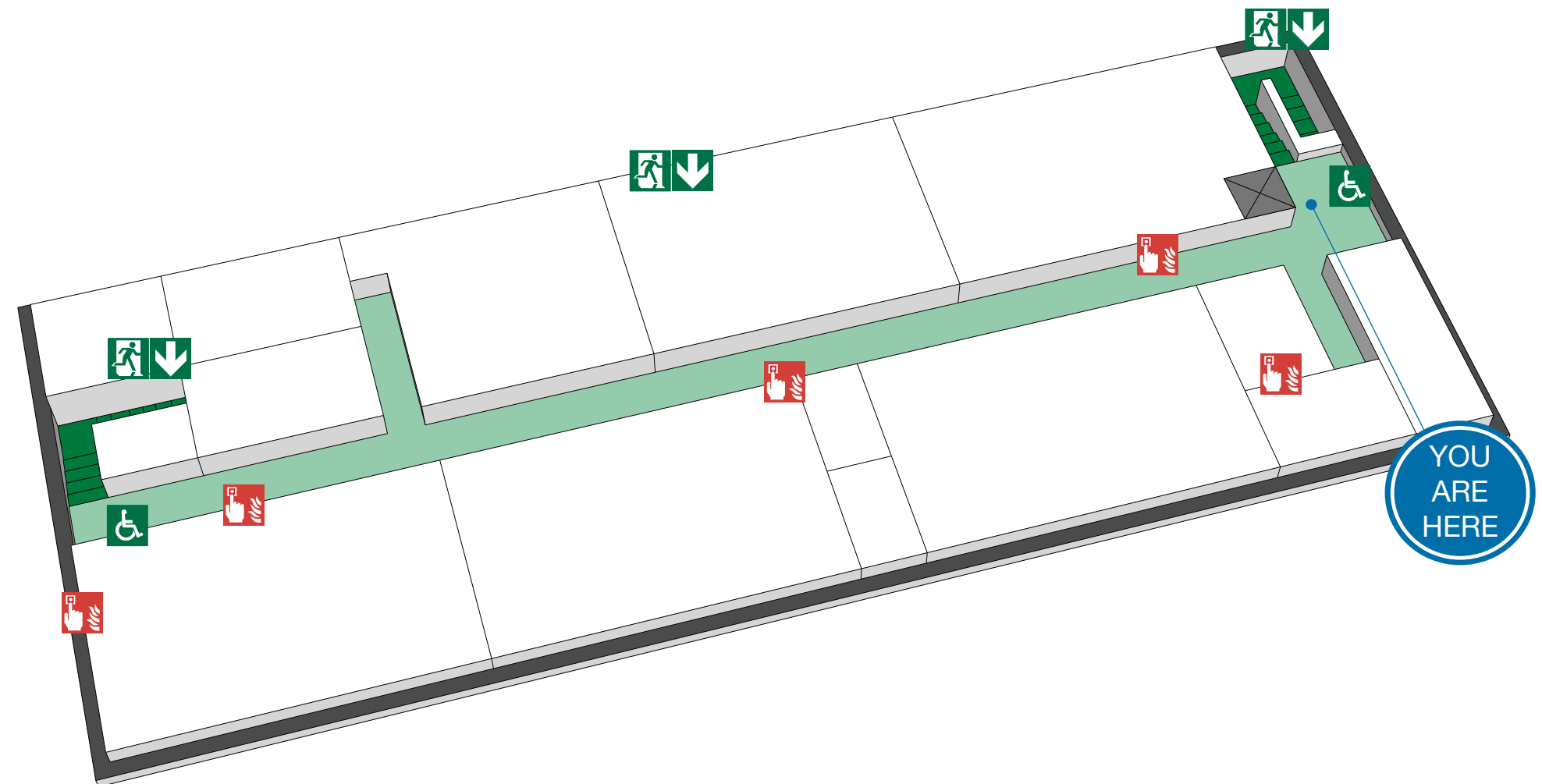
ASSEMBLY POINT



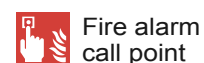
FIRE ESCAPE PLAN



LOUGHBOROUGH UNIVERSITY
EDWARD BARNSELY - SECOND FLOOR



The Deaf Alerter system is installed in this building.
Please contact the University Fire Officer on 01509 222182
for further advice.



Fire alarm
call point



Wheelchair
accessible exit



Fire
exit



Fire escape
route



Assembly
point



Safe
refuge



Lift



IN CASE OF FIRE



Operate nearest fire alarm call point



Telephone internal emergency number 888 or 0800 526966 if using outside line or mobile phone. In the event of a delay call 999 for the Fire Service giving the correct location of the building.



Do not attack the fire with extinguisher unless trained to do so.

ON HEARING THE ALARM



Evacuate the building and go to the assembly point. Your assembly point is :-

**Opposite main entrance
Assembly point 2**



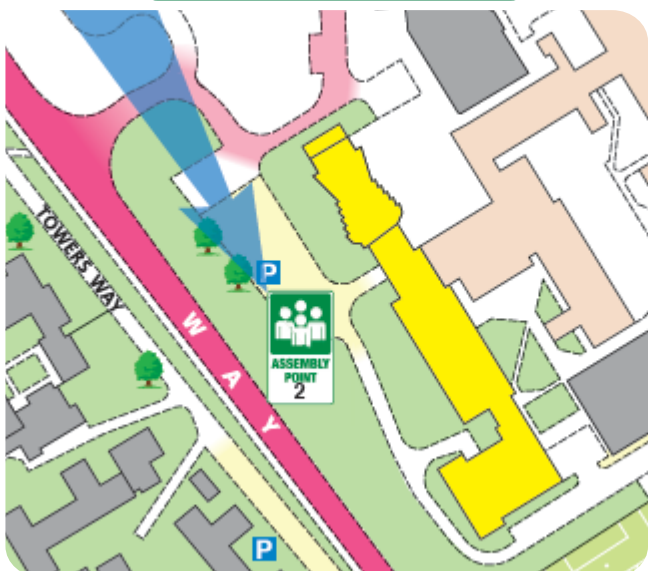
When alarm is given :- do not panic, do not run.



Leave the building following fire emergency exit signs.

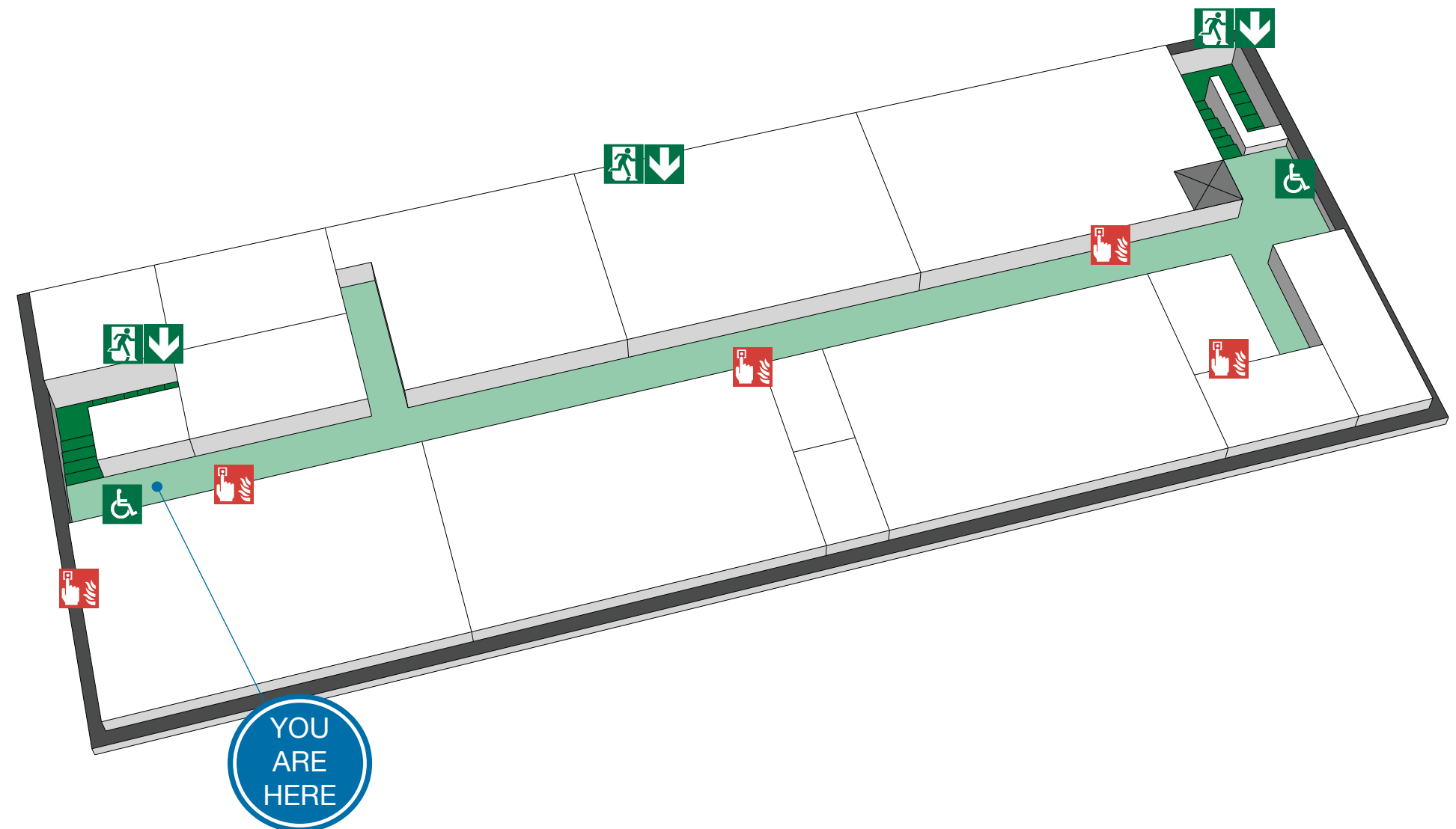
DO NOT re-enter the building until told to do so by either the Fire Marshal, Loughborough University Security or the Fire Service.

ASSEMBLY POINT

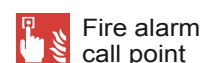


FIRE ESCAPE PLAN

LOUGHBOROUGH UNIVERSITY
EDWARD BARNSELY - SECOND FLOOR



The Deaf Alerter system is installed in this building.
Please contact the University Fire Officer on 01509 222182
for further advice.



Fire alarm
call point



Wheelchair
accessible exit



Fire
exit



Fire escape
route



Assembly
point



Safe
refuge



Lift