

Sir David Wallace Building

LAST UPDATED July 2017

Purpose:

The purpose of a Generic Emergency Evacuation Plan (GEEP) is to enable visitors to the building with restricted mobility or those who may not be able to evacuate unaided to become familiar with the layout, evacuation procedures, available equipment and communication devices.

If you feel that this document does not provide you with sufficient information or that you require further assistance, please contact the Loughborough University Fire Officer on 01509 222182.

The building:

Sir David Wallace building comprises of 3 floors. 2 floors are accessible by using the lifts. Emergency egress using these lifts is not possible during an evacuation.

Safe refuge areas are available in some stair cores on the first floor and provide a EVC System (Emergency Voice Communication System) which links directly to the security gatehouse (see attached floor plan).

Several accessible fire exits are available at ground level.

Action required on hearing the fire alarm:

If able, you should leave the building immediately by the nearest fire exit (see attached floor plan) and report to the assigned assembly point for the building.

If you are unable to evacuate the building unaided, please proceed to one of the safe refuges located in each stair core (see attached floor plan).

An EVC System (Emergency Voice Communication System) is available in each safe refuge. Use this to contact the security team and notify them of your location, details of which are printed on the front of the panel. Full details on how to use the emergency call point are also provided in the safe refuge.

Other recommendations:

It is recommended that all visitors to The Sir David Wallace Building should familiarise themselves with the fire alarm signals and floor layout. Floor plans and evacuation equipment locations have been provided with this document.

Equipment provided:

Accessible fire exits are available on the ground floor of the building.

Safe refuge areas with EVC System (Emergency Voice Communication System) are available in each stair core on ground and first floor levels.



The Deaf Alerter system is installed in this building. If you would like access to a Deaf Alerter Pager, please contact the University Fire Officer on 01509 222182.



YOUR ASSEMBLY POINT IS:

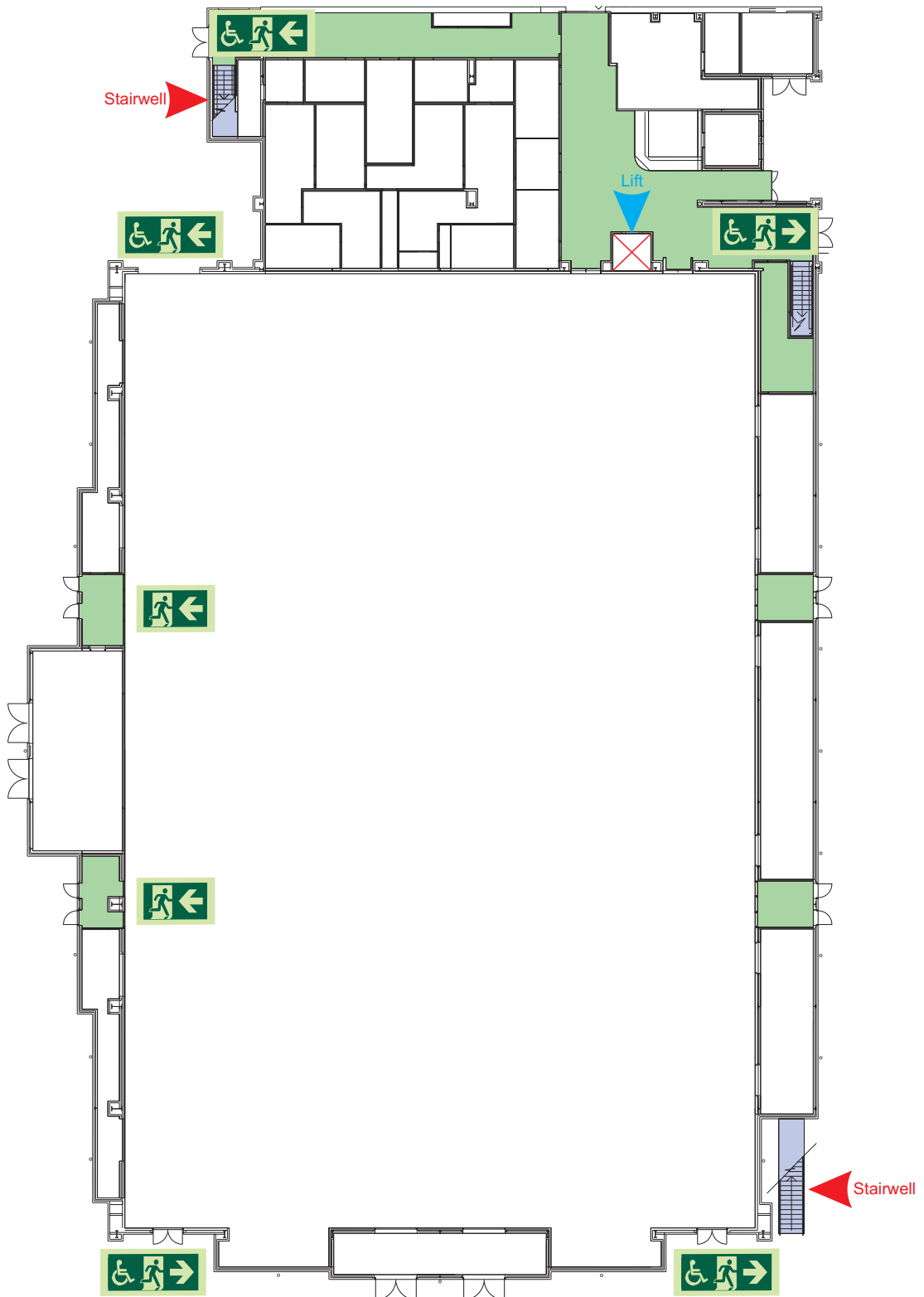
Fire Assembly Point 3

Generic Emergency Evacuation Plan

Loughborough University

Sir David Wallace Building

LAST UPDATED July 2017



Ground



Accessible final exit



Evacuation lift



Safe refuge



Evacuation coms



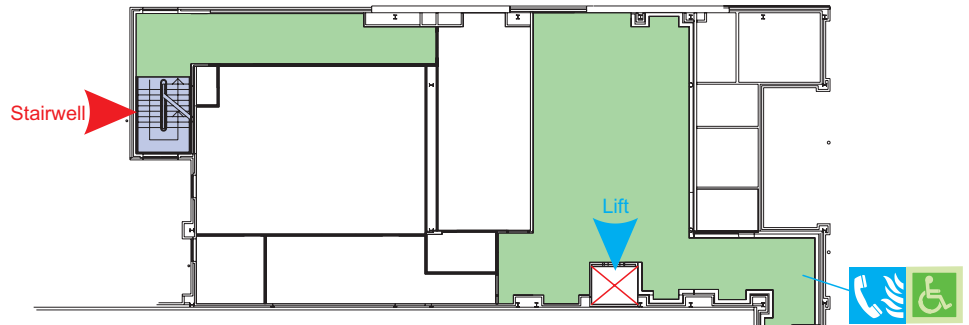
Non evacuation lift

Generic Emergency Evacuation Plan

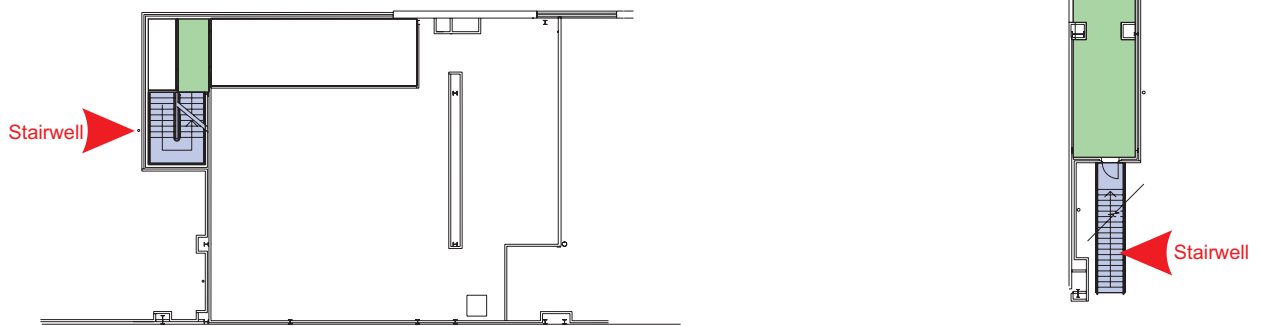
Loughborough University

Sir David Wallace Building

LAST UPDATED July 2017



First



Plant



Accessible final exit



Evacuation lift



Safe refuge



Evacuation coms



Non evacuation lift

FIRE ESCAPE PLAN

LOUGHBOROUGH UNIVERSITY FIRE INSTRUCTIONS

ANY PERSON DISCOVERING A FIRE



Sound the alarm.
Operate the nearest fire alarm call point.



Telephone Security on the emergency number 0800 526966.



Do not attack fire with extinguisher unless trained to do so.

ON HEARING THE ALARM



Evacuate building and go to assembly point.
Your assembly point is:-

Assembly Point 3

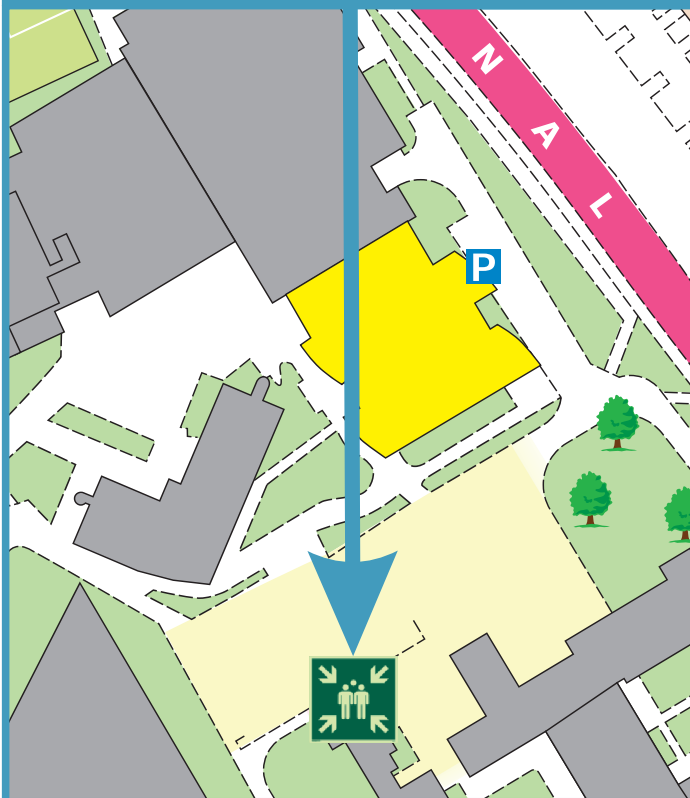


When alarm is given - do not panic, do not run.
Leave the building following the fire emergency exit signs.

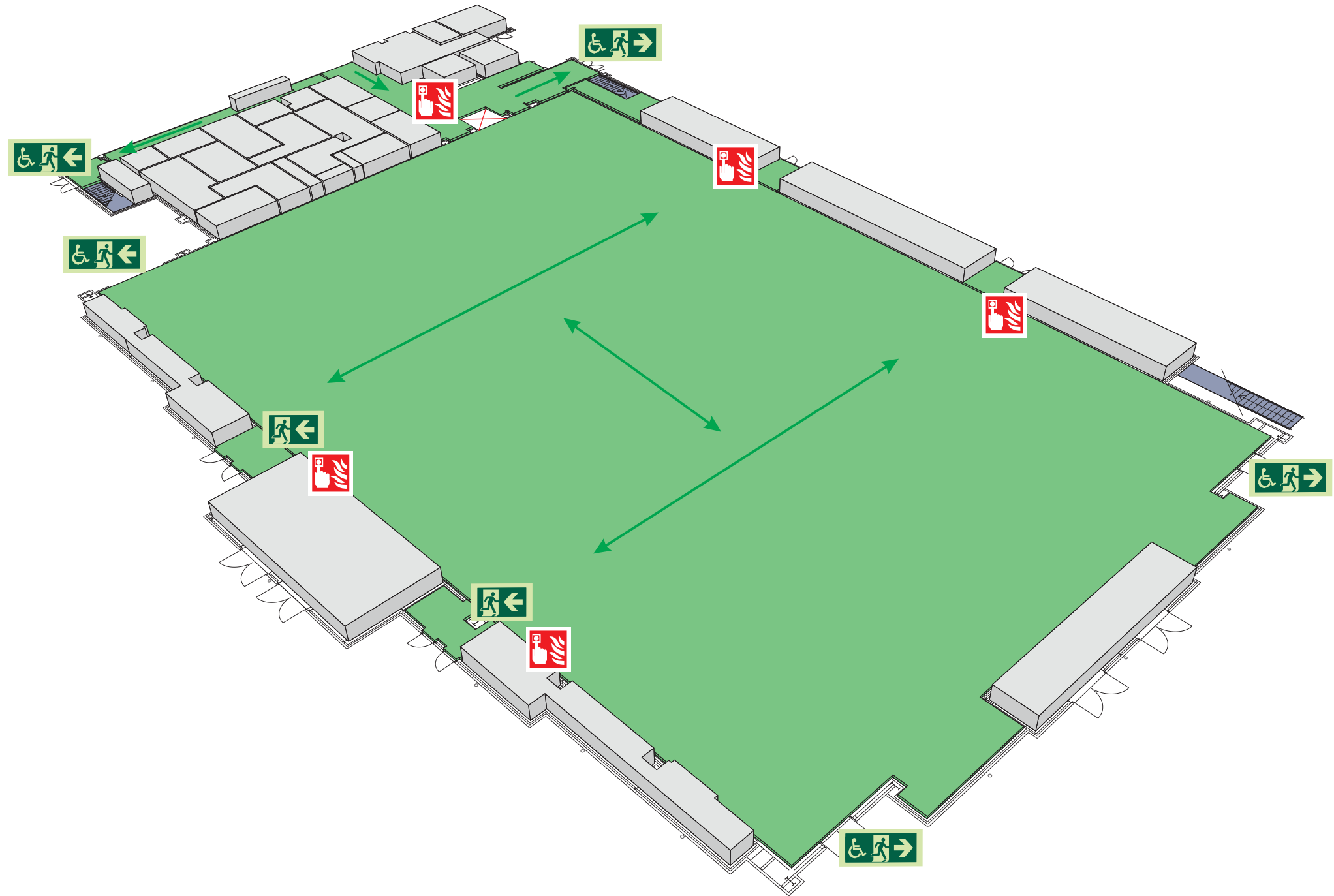


Do not re-enter the building unless told to do so by the Fire Marshall, Warden or Fire Service.

ASSEMBLY POINT 3 IS ALLOCATED TO THE BUILDINGS SHOWN IN YELLOW



Sir David Wallace Building Ground Floor



The Deaf Alerter system is installed in the building.
Please contact the University Fire Officer on 01509 222182 for further advice.

simplydesignsolutions

Loughborough
University



Fire alarm
Call point



Fire exit



Wheelchair
accessible exit



Fire escape route



Assembly point



Safe refuge



Evac lift



Evac coms



Non evac coms

FIRE ESCAPE PLAN

LOUGHBOROUGH UNIVERSITY FIRE INSTRUCTIONS

ANY PERSON DISCOVERING A FIRE



Sound the alarm.
Operate the nearest fire alarm call point.



Telephone Security on the emergency
number 0800 526966.



Do not attack fire with extinguisher
unless trained to do so.

ON HEARING THE ALARM



Evacuate building and go to assembly
point.
Your assembly point is:-

Assembly Point 3

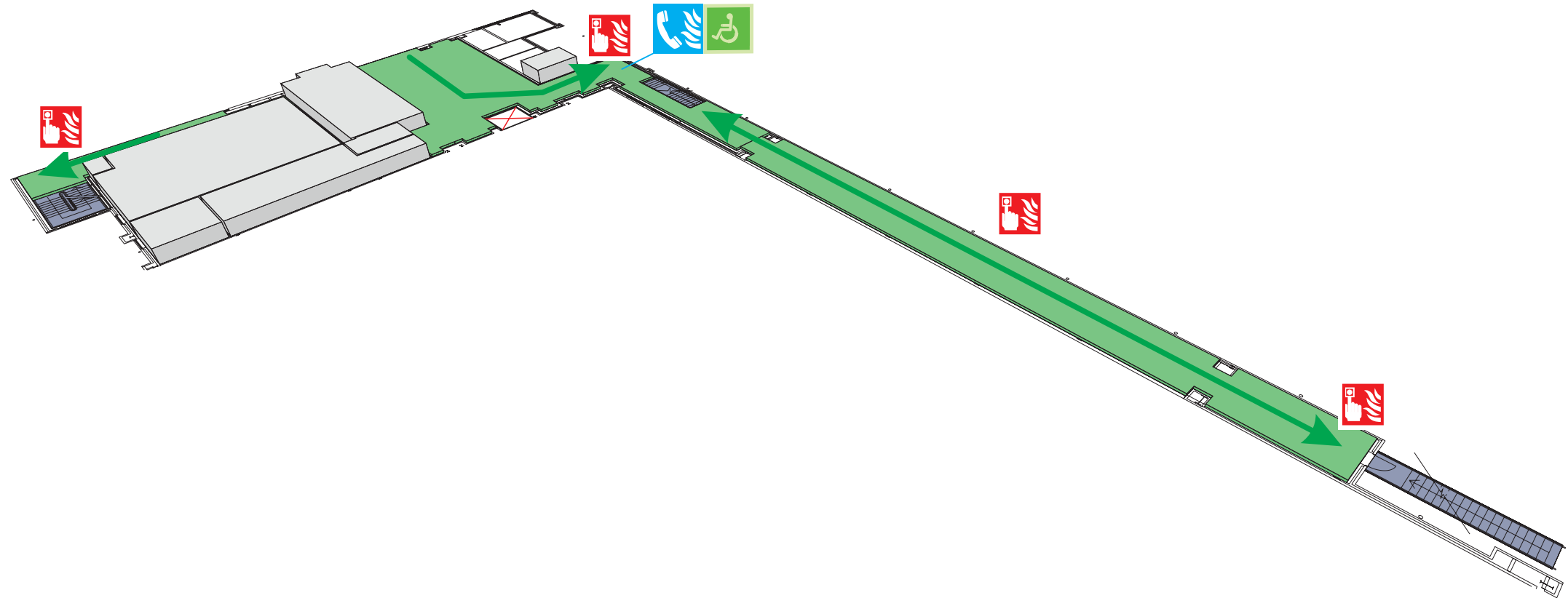
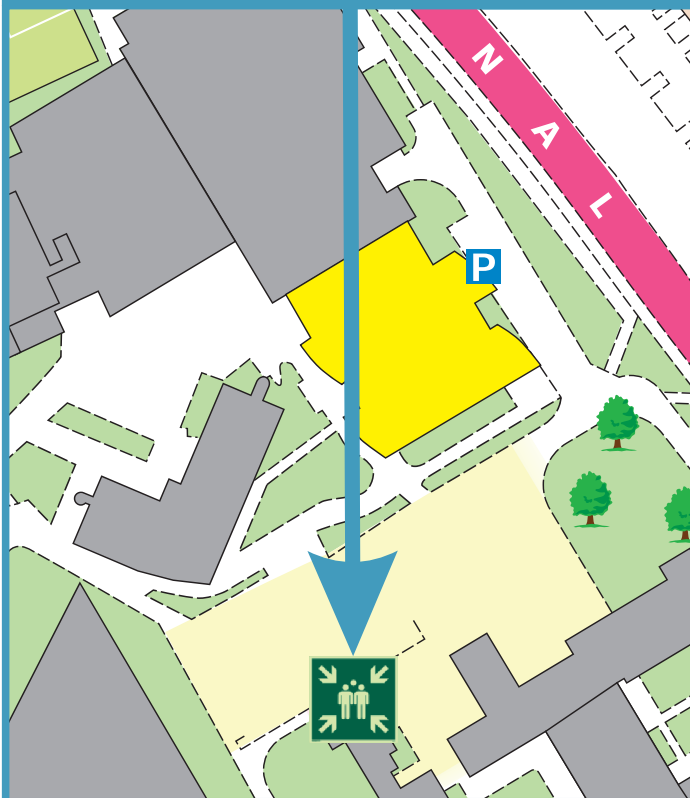


When alarm is given - do not panic, do
not run.
Leave the building following the fire
emergency exit signs.



Do not re-enter the building unless told
to do so by the Fire Marshall, Warden or
Fire Service.

ASSEMBLY POINT 3 IS ALLOCATED TO THE BUILDINGS SHOWN IN YELLOW



The Deaf Alerter system is installed in the building.
Please contact the University Fire Officer on **01509 222182** for further advice.

simplydesignsolutions

Sir David Wallace Building First Floor



Fire alarm
Call point



Fire exit



Wheelchair
accessible exit



Fire escape route



Assembly point



Safe refuge



Evac lift



Evac coms



Non evac coms

Loughborough
University

FIRE ESCAPE PLAN

LOUGHBOROUGH UNIVERSITY FIRE INSTRUCTIONS

ANY PERSON DISCOVERING A FIRE



Sound the alarm.
Operate the nearest fire alarm call point.



Telephone Security on the emergency number 0800 526966.



Do not attack fire with extinguisher unless trained to do so.

ON HEARING THE ALARM



Evacuate building and go to assembly point.
Your assembly point is:-

Assembly Point 3

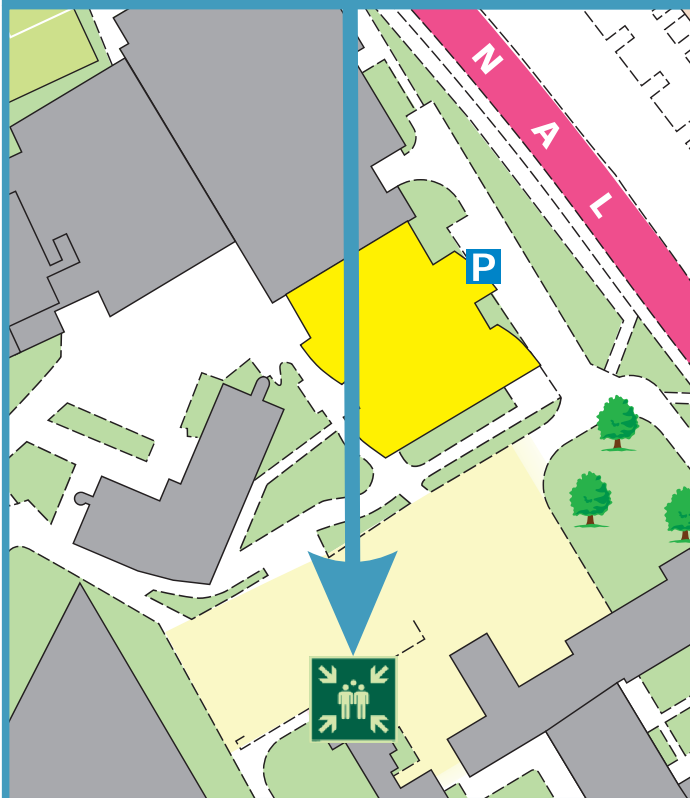


When alarm is given - do not panic, do not run.
Leave the building following the fire emergency exit signs.

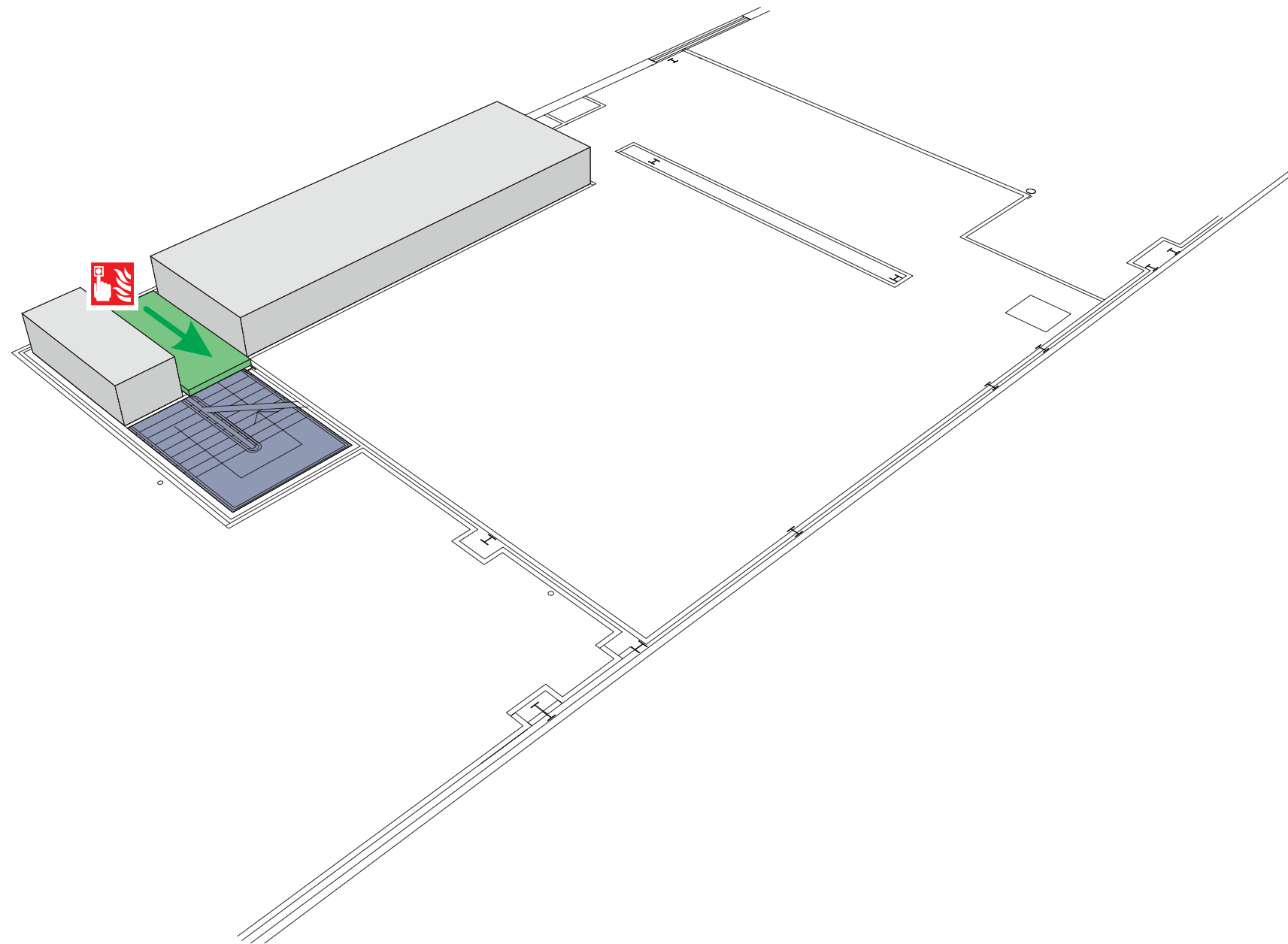


Do not re-enter the building unless told to do so by the Fire Marshall, Warden or Fire Service.

ASSEMBLY POINT 3 IS ALLOCATED TO THE BUILDINGS SHOWN IN YELLOW



Sir David Wallace Building Plant



Fire alarm
Call point



Fire exit



Wheelchair
accessible exit



Fire escape route



Assembly point



Safe refuge



Evac lift



Evac coms



Non evac coms



The Deaf Alerter system is installed in the building.
Please contact the University Fire Officer on **01509 222182** for further advice.

simplydesignsolutions

Loughborough
University