

BROCKINGTON BUILDING

LAST UPDATED 13TH JUNE 2013

Purpose:

The purpose of a Generic Emergency Evacuation Plan (GEEP) is to enable visitors to the building with restricted mobility or those who may not be able to evacuate unaided to become familiar with the layout, evacuation procedures, available equipment and communication devices.

If you feel that this document does not provide you with sufficient information or that you require further assistance, please contact the Loughborough University Fire Officer on 01509 222182.

The building:

The Brockington building is comprised of 3 floors. Ground and first floors are accessible via the lifts in The Brockington Extension. Wheelchair lifts are also available in Brockington Extension by the stair cores at either end of the building for access between ground and first floors. These lifts are not to be used during a fire.

Accessible exits are available on ground floor of the building. Emergency egress is also possible through the Brockington Extension building on the ground and first floors.

The first floor has a safe refuge area and provides a disabled emergency call point which links directly to security. Alternate safe refuge areas for this floor are available in the Brockington Extension.

The second floor is only accessible by the stairs and has no safe refuge.

Action required on hearing the fire alarm:

If able, you should leave the building immediately by the nearest fire exit (see attached floor plan) and report to the assigned assembly point for the building.

If you are unable to evacuate the building unaided, please proceed to one of the safe refuges located in each stair core (see attached floor plan).

A disabled emergency call point is available in each safe refuge. Use this to contact the security team and notify them of your location, details of which are printed on the front of the panel. Full details on how to use the emergency call point are also provided in the safe refuge.

Other recommendations:

It is recommended that all visitors to the Brockington Building should familiarise themselves with the fire alarm signals and floor layout of the building. Floor plans and fire equipment locations have been provided with this document.

Equipment provided:

In addition to the general alarm, a safe refuge area is available on the first floor. A disabled emergency call point that links directly to security is located in each of the safe refuge areas.

Accessible fire exits are available on the ground floor of the building (see attached plans), and these are to be used as primary exit from the main stair cores.

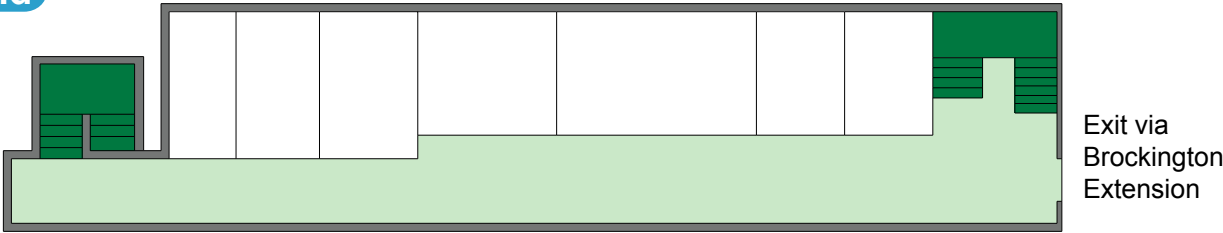
Emergency egress is also possible into the Brockington Extension on Ground and First floors.



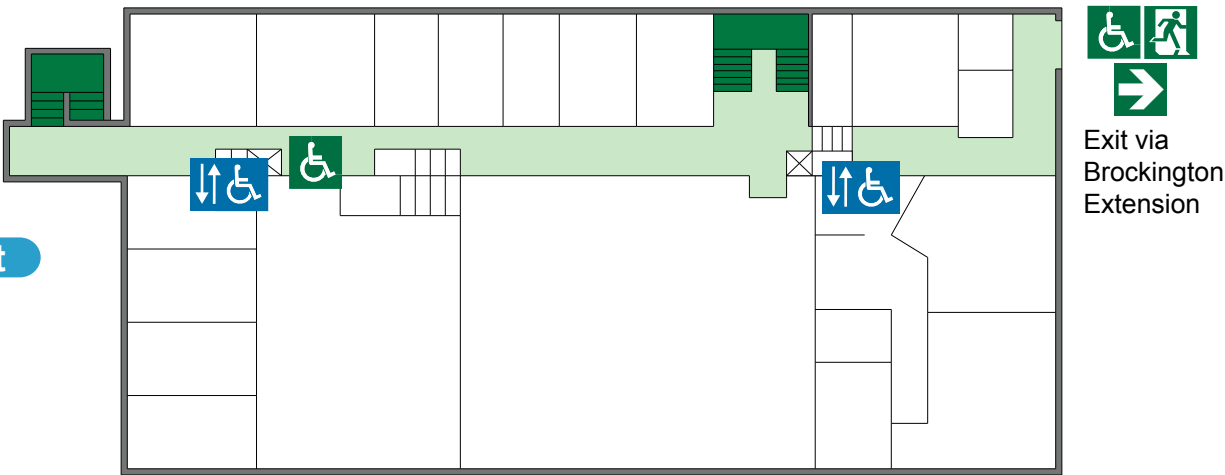
YOUR ASSEMBLY POINT IS:

Fire assembly point 12 - Front of Schofield Building

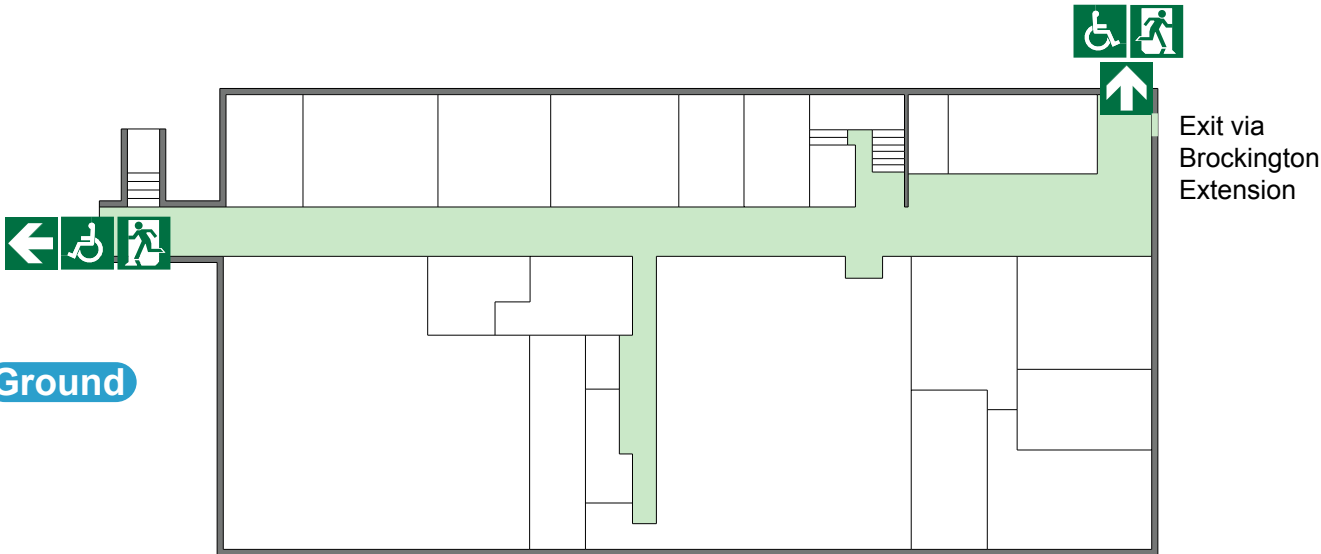
Second



First



Ground



Accessible final exit



Wheelchair lift.



Safe refuge



IN CASE OF FIRE



Operate nearest fire alarm call point



Telephone internal emergency number 888 or 0800 526966 if using outside line or mobile phone. In the event of a delay call 999 for the Fire Service giving the correct location of the building.



Do not attack the fire with extinguisher unless trained to do so.

ON HEARING THE ALARM



Evacuate the building and go to the assembly point. Your assembly point is :-

Front of Schofield Building
Assembly point 12



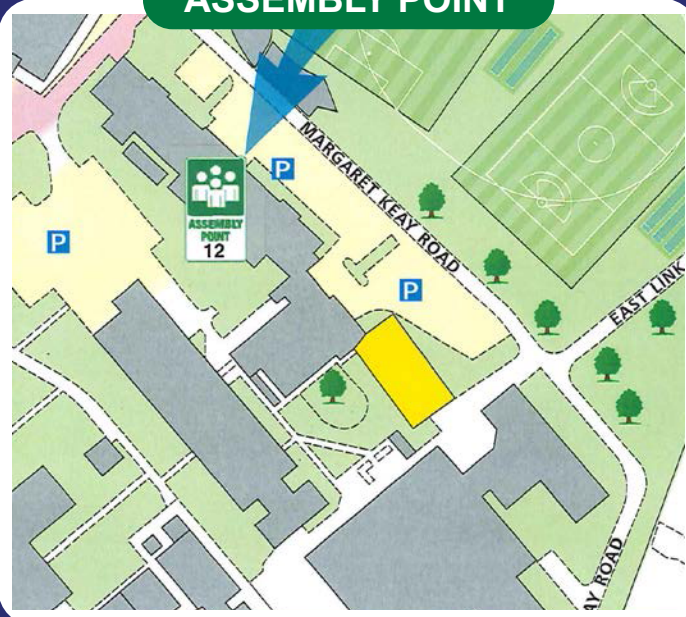
When alarm is given :- do not panic, do not run.



Leave the building following fire emergency exit signs.

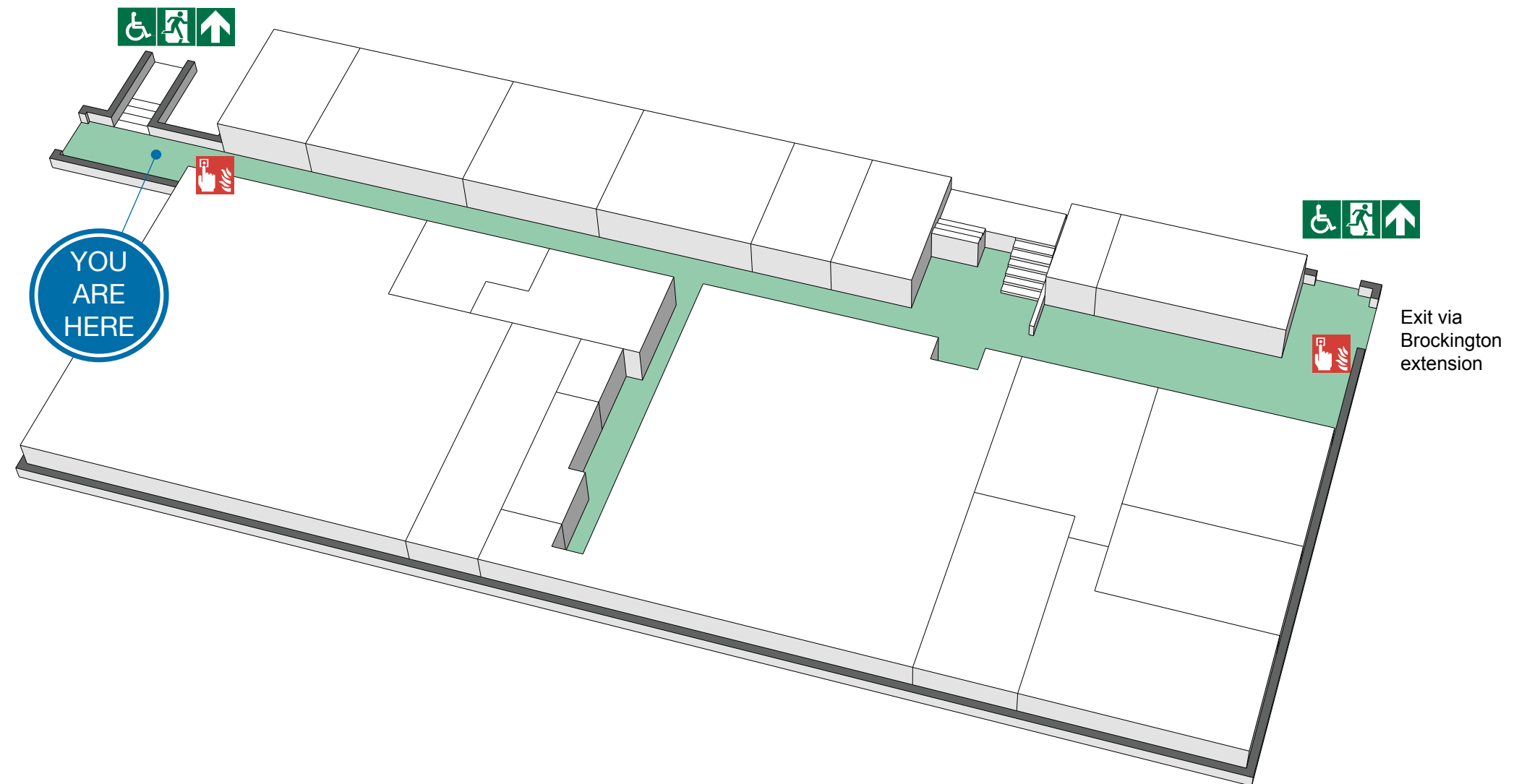
DO NOT re-enter the building until told to do so by either the Fire Marshal, Loughborough University Security or the Fire Service.

ASSEMBLY POINT



FIRE ESCAPE PLAN

LOUGHBOROUGH UNIVERSITY
BROCKINGTON BUILDING - GROUND FLOOR



Fire alarm call point



Wheelchair accessible exit



Fire exit



Fire escape route



Assembly point



Safe refuge



Lift



IN CASE OF FIRE



Operate nearest fire alarm call point



Telephone internal emergency number 888 or 0800 526966 if using outside line or mobile phone. In the event of a delay call 999 for the Fire Service giving the correct location of the building.



Do not attack the fire with extinguisher unless trained to do so.

ON HEARING THE ALARM



Evacuate the building and go to the assembly point. Your assembly point is :-

Front of Schofield Building
Assembly point 12



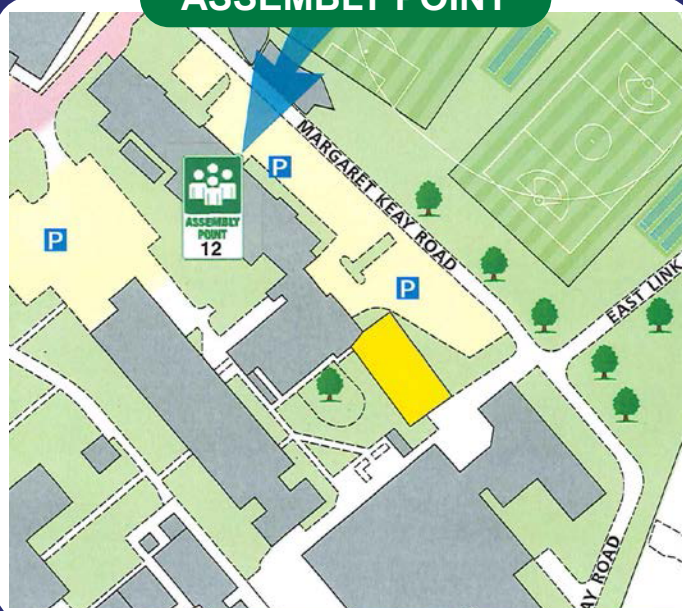
When alarm is given :- do not panic, do not run.



Leave the building following fire emergency exit signs.

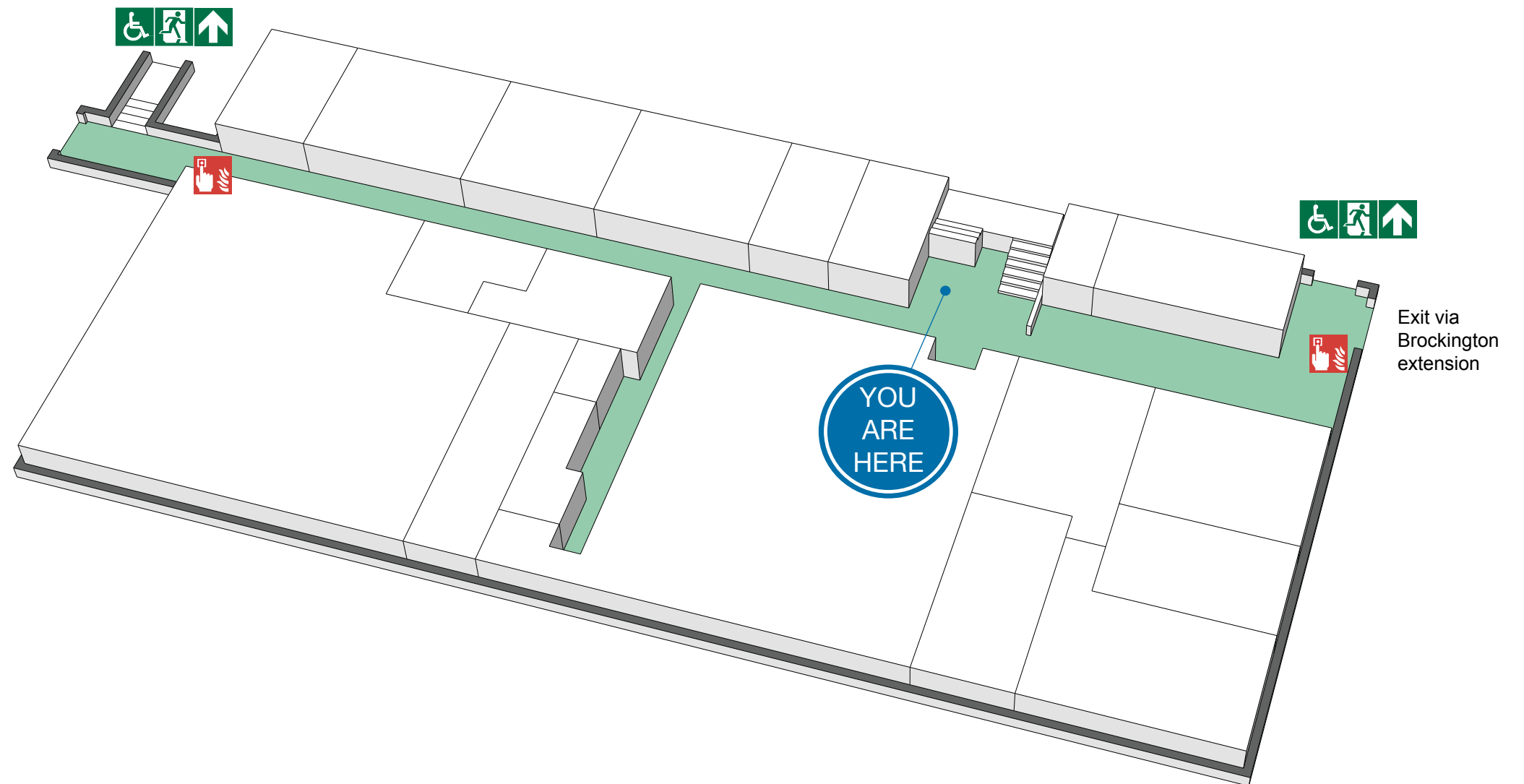
DO NOT re-enter the building until told to do so by either the Fire Marshal, Loughborough University Security or the Fire Service.

ASSEMBLY POINT



FIRE ESCAPE PLAN

LOUGHBOROUGH UNIVERSITY
BROCKINGTON BUILDING - GROUND FLOOR



Fire alarm call point



Wheelchair accessible exit



Fire exit



Fire escape route



Assembly point



Safe refuge



Lift



IN CASE OF FIRE



Operate nearest fire alarm call point



Telephone internal emergency number 888 or 0800 526966 if using outside line or mobile phone. In the event of a delay call 999 for the Fire Service giving the correct location of the building.



Do not attack the fire with extinguisher unless trained to do so.

ON HEARING THE ALARM



Evacuate the building and go to the assembly point. Your assembly point is :-

Front of Schofield Building
Assembly point 12



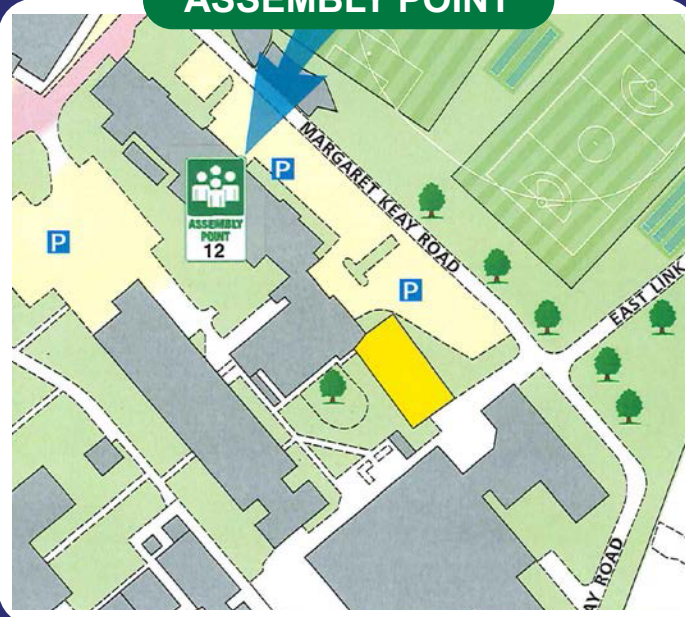
When alarm is given :- do not panic, do not run.



Leave the building following fire emergency exit signs.

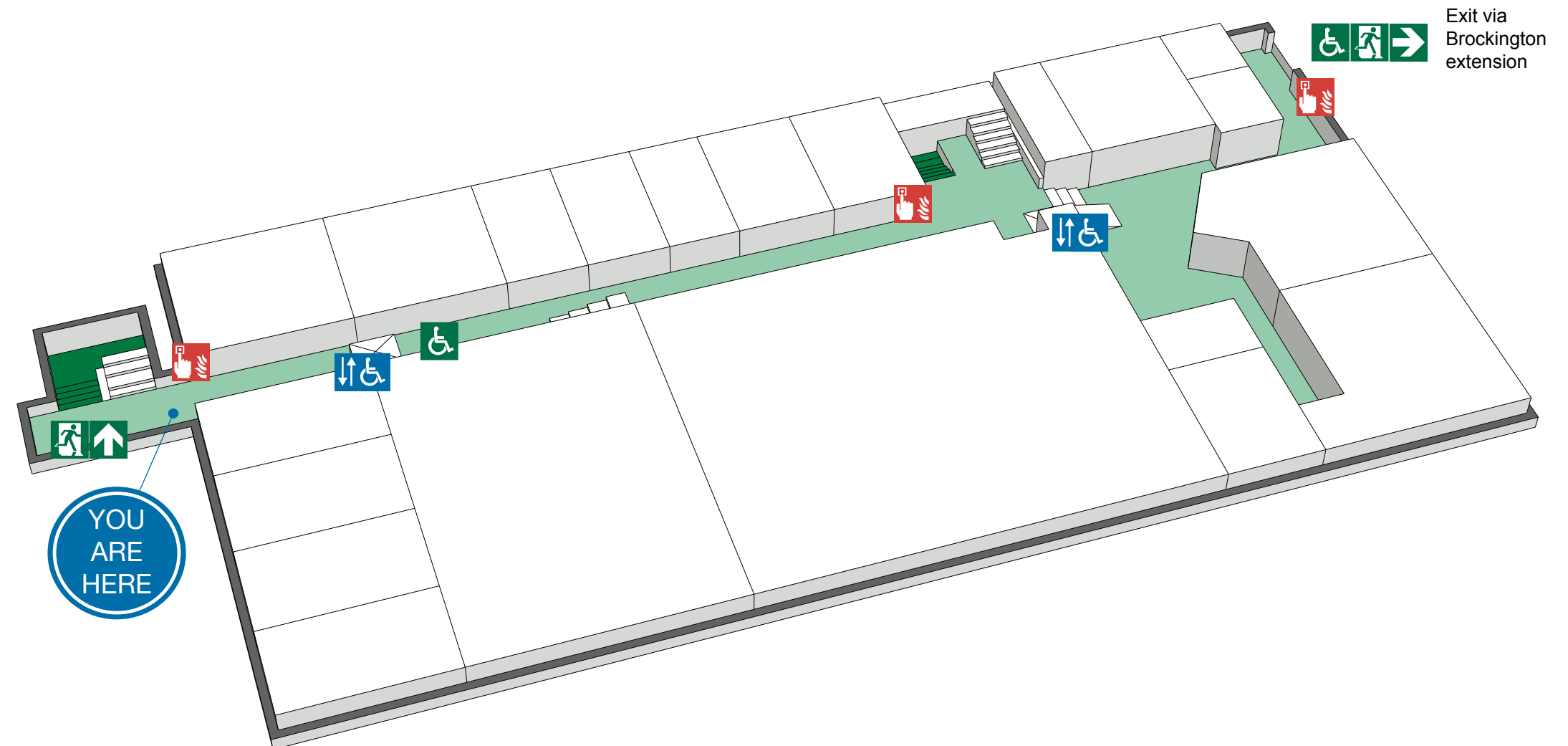
DO NOT re-enter the building until told to do so by either the Fire Marshal, Loughborough University Security or the Fire Service.

ASSEMBLY POINT



FIRE ESCAPE PLAN

LOUGHBOROUGH UNIVERSITY
BROCKINGTON BUILDING - FIRST FLOOR



Fire alarm call point



Wheelchair accessible exit



Fire exit



Fire escape route



Assembly point



Safe refuge



Lift



IN CASE OF FIRE



Operate nearest fire alarm call point



Telephone internal emergency number 888 or 0800 526966 if using outside line or mobile phone. In the event of a delay call 999 for the Fire Service giving the correct location of the building.



Do not attack the fire with extinguisher unless trained to do so.

ON HEARING THE ALARM



Evacuate the building and go to the assembly point. Your assembly point is :-

Front of Schofield Building
Assembly point 12



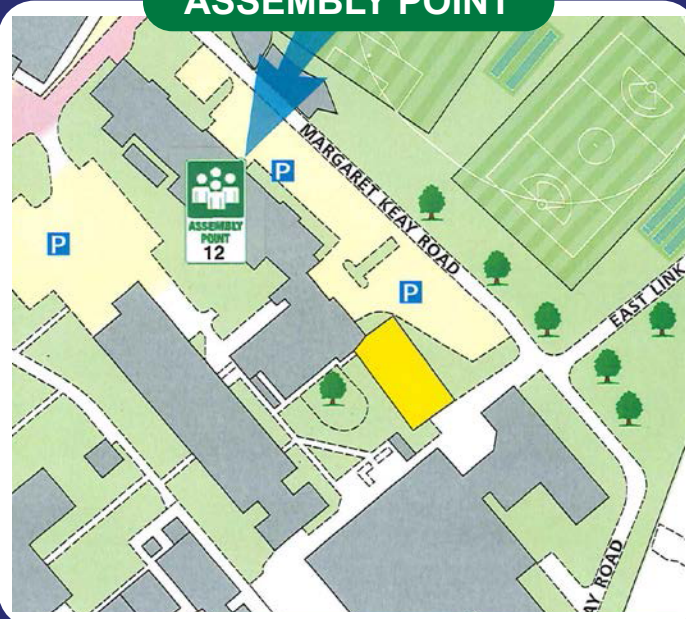
When alarm is given :- do not panic, do not run.



Leave the building following fire emergency exit signs.

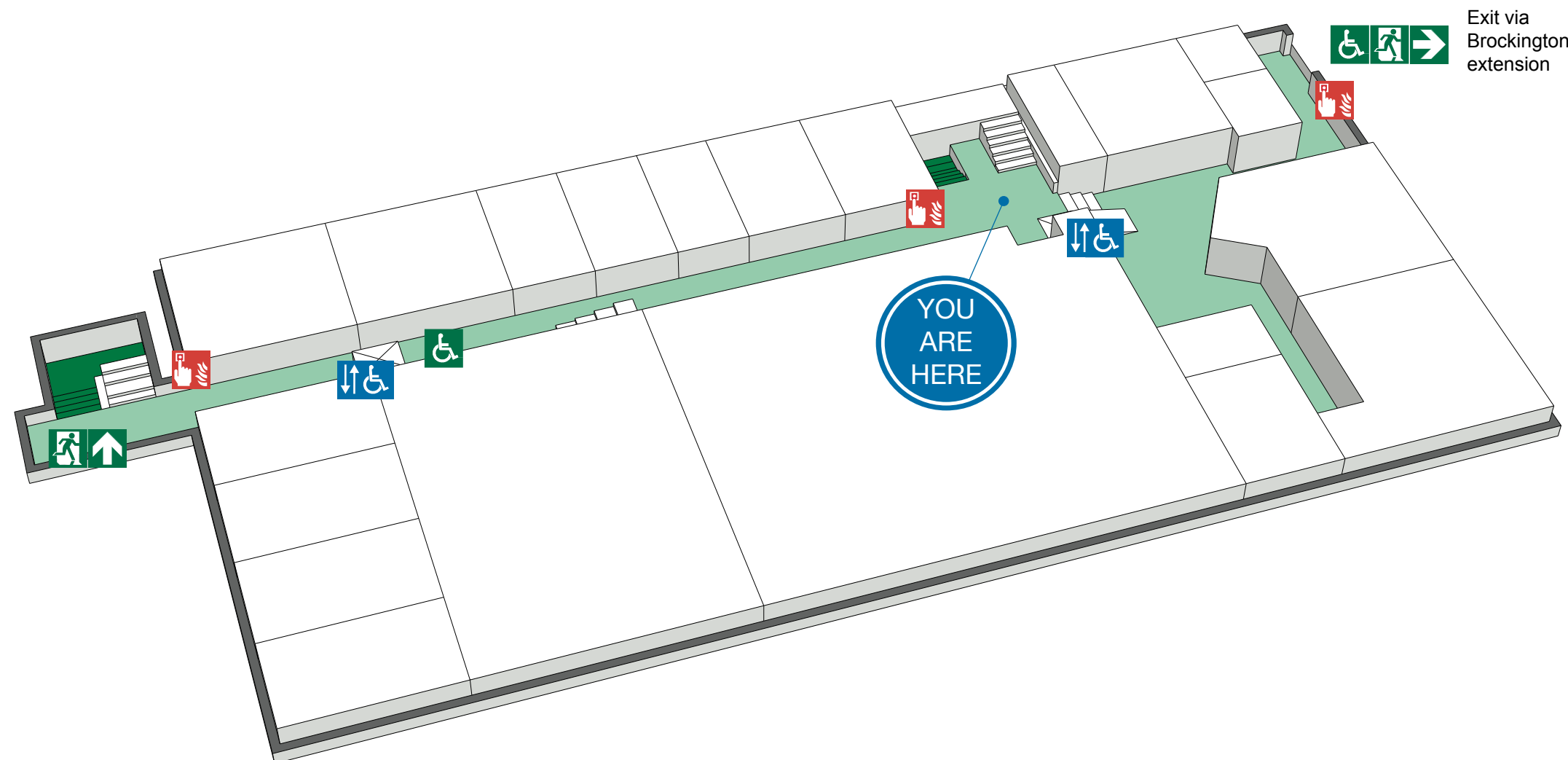
DO NOT re-enter the building until told to do so by either the Fire Marshal, Loughborough University Security or the Fire Service.

ASSEMBLY POINT



FIRE ESCAPE PLAN

LOUGHBOROUGH UNIVERSITY
BROCKINGTON BUILDING - FIRST FLOOR



Fire alarm call point



Wheelchair accessible exit



Fire exit



Fire escape route



Assembly point



Safe refuge



Lift



FIRE ESCAPE PLAN

LOUGHBOROUGH UNIVERSITY
BROCKINGTON BUILDING - SECOND FLOOR



IN CASE OF FIRE



Operate nearest fire alarm call point



Telephone internal emergency number 888 or 0800 526966 if using outside line or mobile phone. In the event of a delay call 999 for the Fire Service giving the correct location of the building.



Do not attack the fire with extinguisher unless trained to do so.

ON HEARING THE ALARM



Evacuate the building and go to the assembly point. Your assembly point is :-

Front of Schofield Building
Assembly point 12

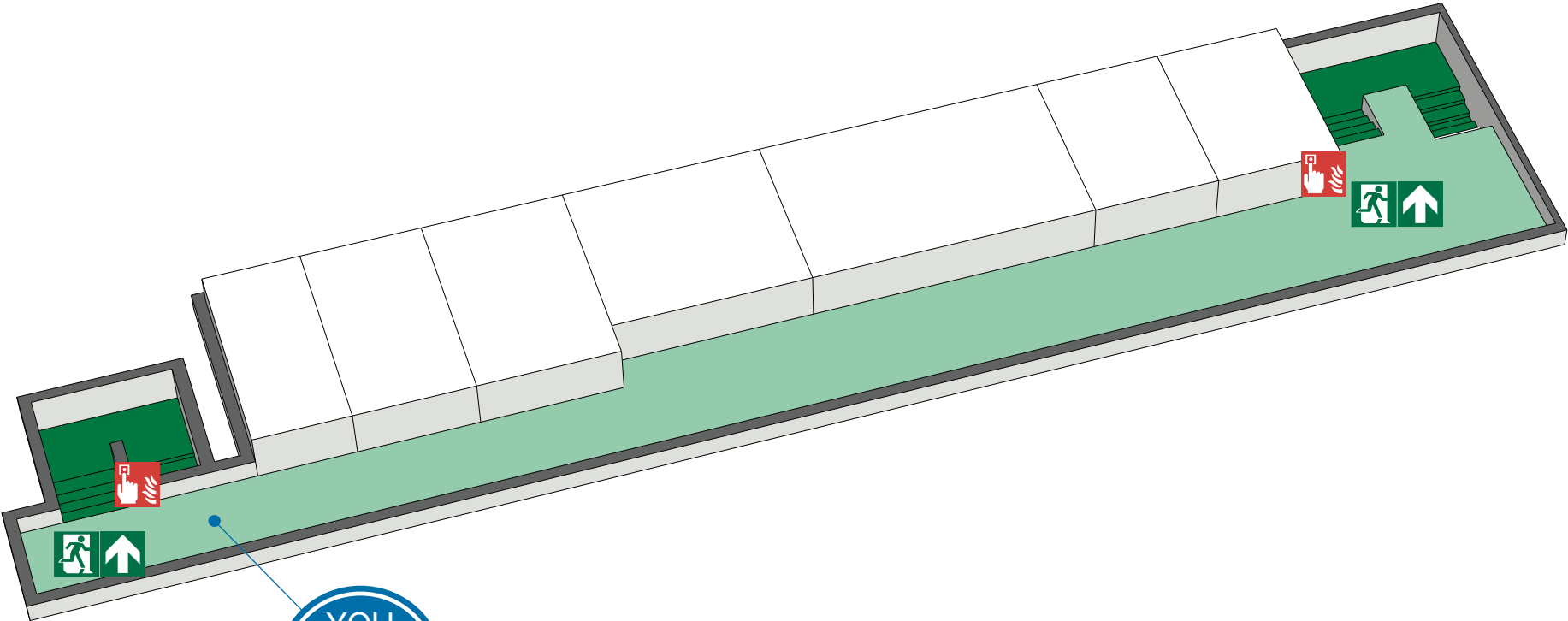


When alarm is given :- do not panic, do not run.



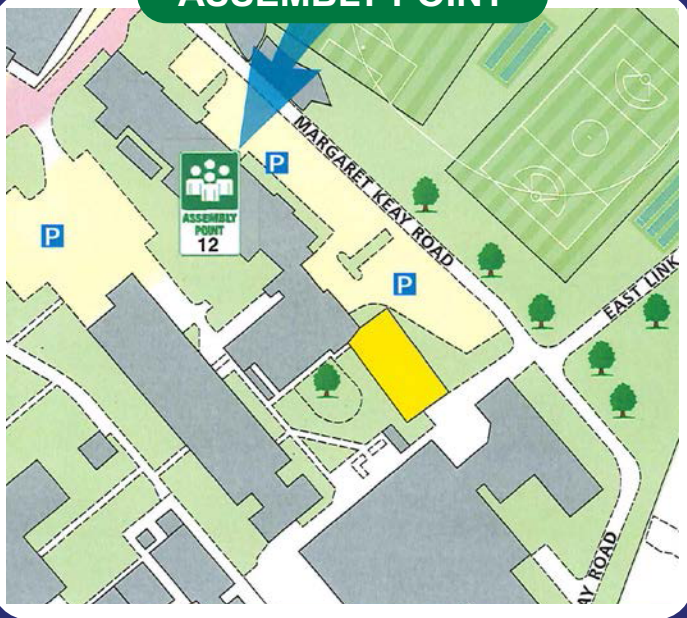
Leave the building following fire emergency exit signs.

DO NOT re-enter the building until told to do so by either the Fire Marshal, Loughborough University Security or the Fire Service.



YOU
ARE
HERE

ASSEMBLY POINT



Fire alarm call point



Wheelchair accessible exit



Fire exit



Fire escape route



Assembly point



Safe refuge



Lift



IN CASE OF FIRE



Operate nearest fire alarm call point



Telephone internal emergency number 888 or 0800 526966 if using outside line or mobile phone. In the event of a delay call 999 for the Fire Service giving the correct location of the building.



Do not attack the fire with extinguisher unless trained to do so.

ON HEARING THE ALARM



Evacuate the building and go to the assembly point. Your assembly point is :-

Front of Schofield Building
Assembly point 12



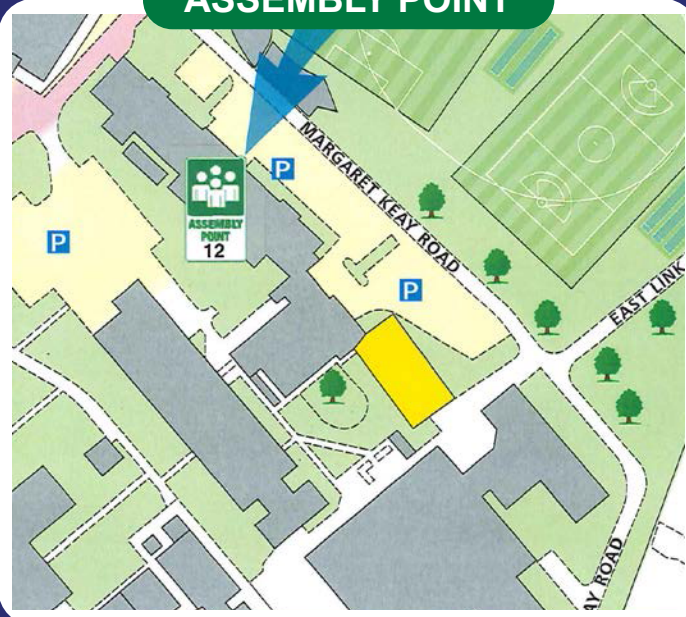
When alarm is given :- do not panic, do not run.



Leave the building following fire emergency exit signs.

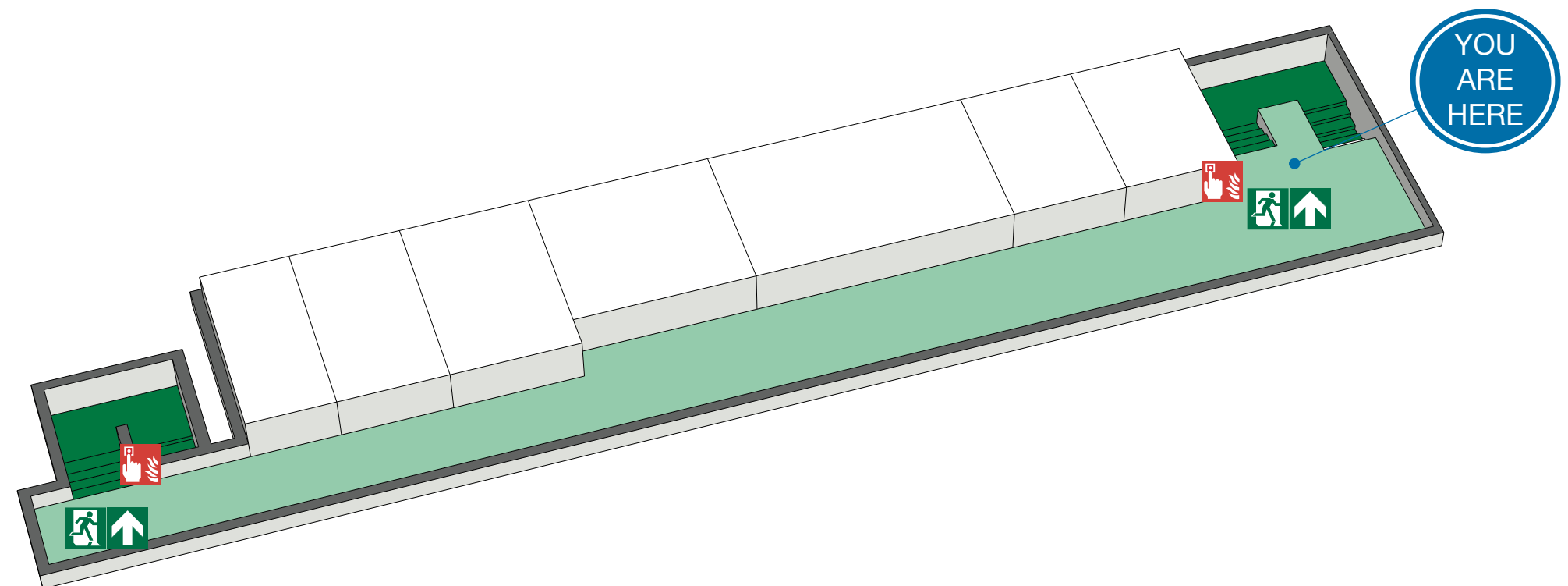
DO NOT re-enter the building until told to do so by either the Fire Marshal, Loughborough University Security or the Fire Service.

ASSEMBLY POINT



FIRE ESCAPE PLAN

LOUGHBOROUGH UNIVERSITY
BROCKINGTON BUILDING - SECOND FLOOR



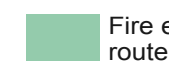
Fire alarm call point



Wheelchair accessible exit



Fire exit



Fire escape route



Assembly point



Safe refuge



Lift

BROCKINGTON EXTENSION BUILDING

LAST UPDATED 13TH JUNE 2013

Purpose:

The purpose of a Generic Emergency Evacuation Plan (GEEP) is to enable visitors to the building with restricted mobility or those who may not be able to evacuate unaided to become familiar with the layout, evacuation procedures, available equipment and communication devices.

If you feel that this document does not provide you with sufficient information or that you require further assistance, please contact the Loughborough University Fire Officer on 01509 222182.

The building:

The Brockington Extension is comprised of 5 floors. All floors are accessible via the lift in the main entrance. Accessible exits are available on ground level of the building. Emergency egress is also possible through the Brockington Extension and Schofield buildings.

The first floor has an emergency exit through to the Brockington building.

First and second floors have emergency exit access through to the Wavy Top building.

The third and fourth floors have safe refuge areas at each end of the main corridor where a disabled emergency call point is also available.

Action required on hearing the fire alarm:

If able, you should leave the building immediately by the nearest fire exit (see attached floor plan) and report to the assigned assembly point for the building.

If you are unable to evacuate the building unaided, please proceed to one of the safe refuges located in each stair core (see attached floor plan).

A disabled emergency call point is available in each safe refuge. Use this to contact the security team and notify them of your location, details of which are printed on the front of the panel. Full details on how to use the emergency call point are also provided in the safe refuge.

Other recommendations:

It is recommended that all visitors to the Mechanical Engineering building should familiarise themselves with the fire alarm signals and floor layout of the building. Floor plans and fire equipment locations have been provided with this document.

Equipment provided:

In addition to the general alarm, two safe refuge areas are available on the third and fourth floors. A disabled emergency call point that links directly to security is located in each of the safe refuge areas.

Emergency egress is also possible through the corridors to the Wavy Top or Brockington buildings.

Accessible fire exits are available on the ground floor of the building (see attached plans), and these are to be used as primary exit from the main stair cores.

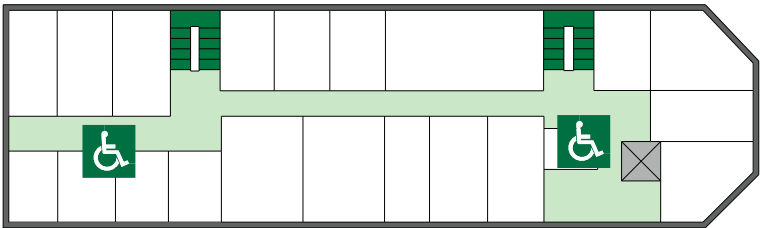


YOUR ASSEMBLY POINT IS:

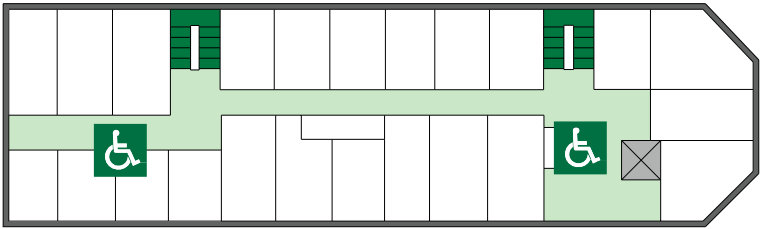
Fire assembly point 12 - Outside Schofield Building

BROCKINGTON EXTENSION BUILDING

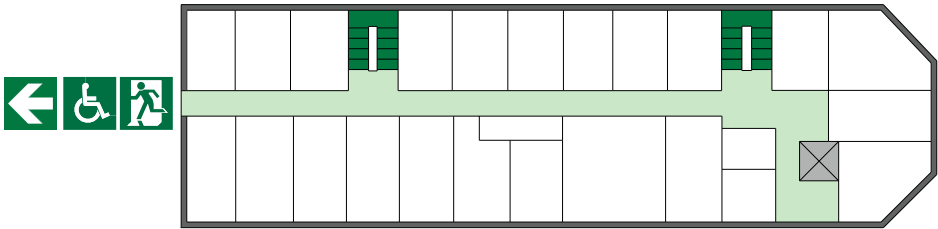
Fourth



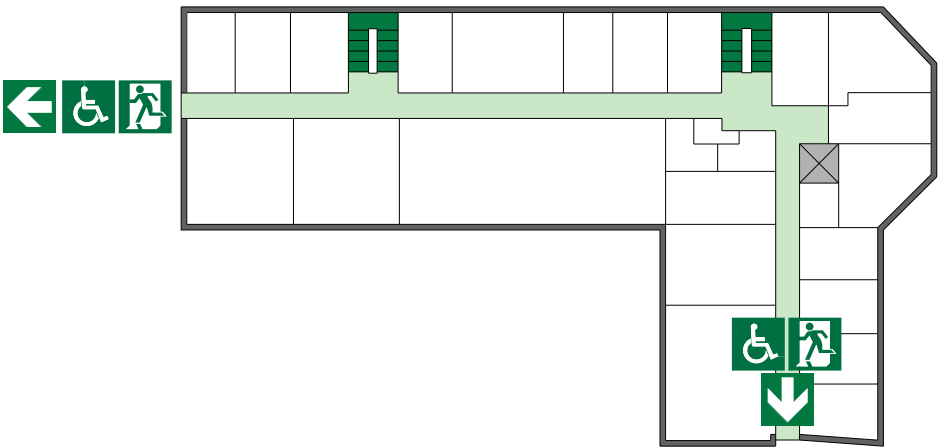
Third



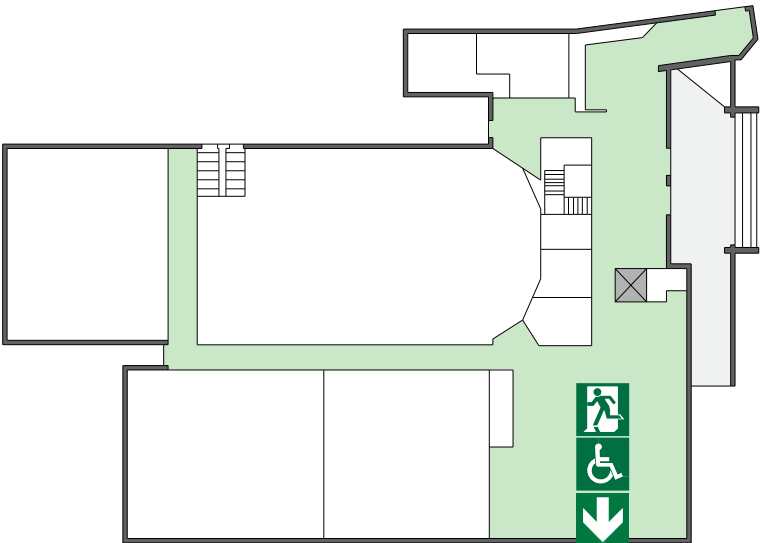
Second



First



Ground



Accessible final exit



Alternate emergency egress
via Wolfson Building



Safe refuge