

## **Bridgeman**

LAST UPDATED July 2016

### **Purpose:**

The purpose of a Generic Emergency Evacuation Plan (GEEP) is to enable visitors to the building with restricted mobility or those who may not be able to evacuate unaided to become familiar with the layout, evacuation procedures, available equipment and communication devices.

If you feel that this document does not provide you with sufficient information or that you require further assistance, please contact the Loughborough University Fire Officer on 01509 222182.

### **The building:**

Bridgeman building comprises of 3 floors all floors are accessible by using the lift.

Emergency egress using this lift is not possible during an evacuation.

Safe refuge areas are available in some stair cores on all upper floors and provide a EVC System (Emergency Voice Communication System) which links directly to the security (see attached floor plan).

Several accessible fire exits are available at ground level.

### **Action required on hearing the fire alarm:**

If able, you should leave the building immediately by the nearest fire exit (see attached floor plan) and report to the assigned assembly point for the building.

If you are unable to evacuate the building unaided, please proceed to one of the safe refuges located in each stair core (see attached floor plan).

An EVC System (Emergency Voice Communication System) is available in each safe refuge. Use this to contact the security team and notify them of your location, details of which are printed on the front of the panel. Full details on how to use the emergency call point are also provided in the safe refuge.

### **Other recommendations:**

It is recommended that all visitors to the Bridgeman Building should familiarise themselves with the fire alarm signals and floor layout. Floor plans and evacuation equipment locations have been provided with this document.

### **Equipment provided:**

Accessible fire exits are available on the ground floor of the building.

Safe refuge areas with EVC System (Emergency Voice Communication System) are available in each stair core on all 3 floor levels.



The Deaf Alerter system is **Not** installed in this building. If you would like access to a Deaf Alerter Pager, please contact the University Fire Officer on 01509 222182.



YOUR ASSEMBLY POINT IS:

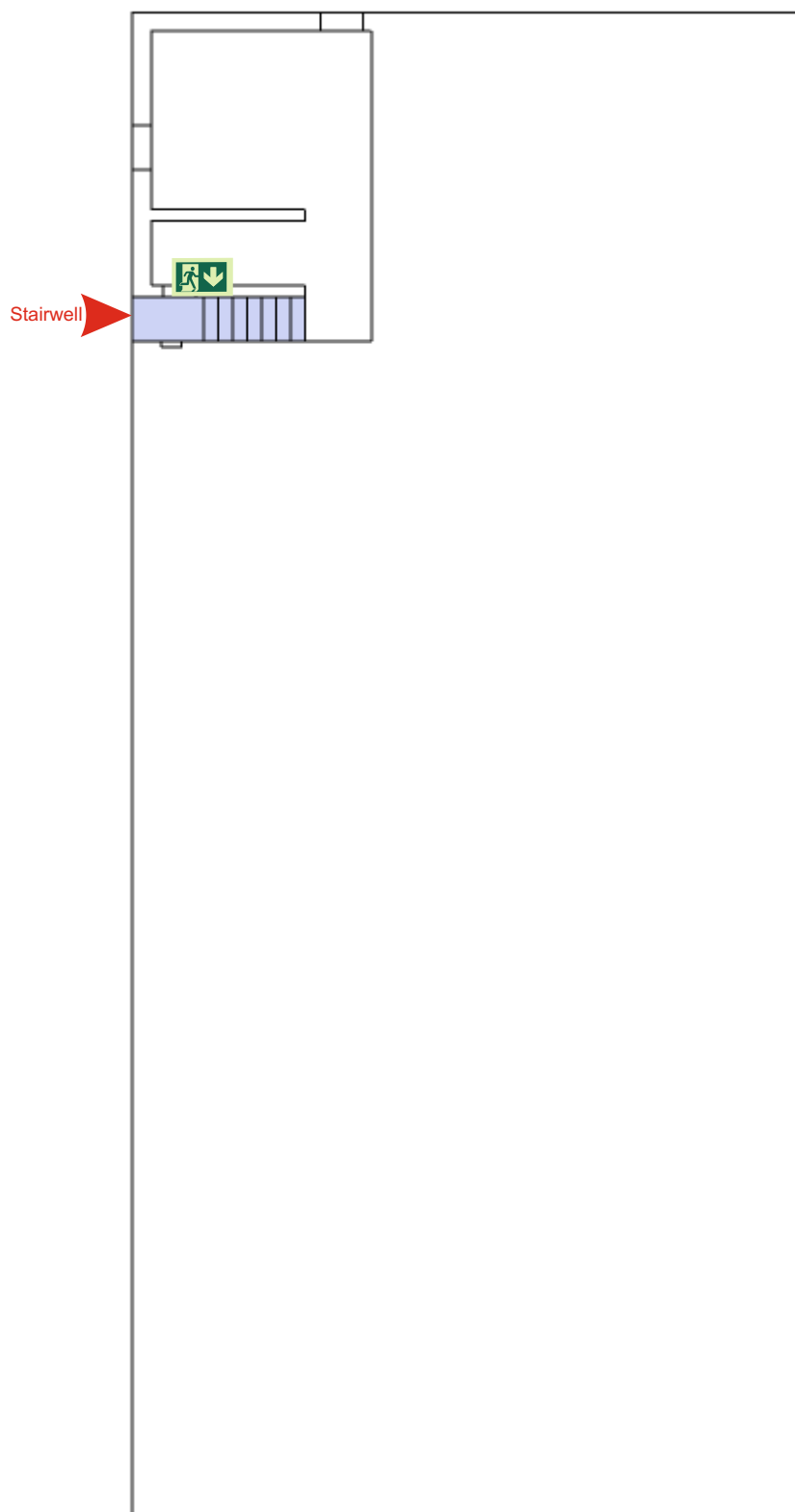
Fire Assembly Point 19

# Generic Emergency Evacuation Plan

Loughborough  
University

## Bridgeman

LAST UPDATED July 2016



Basement



Accessible final exit



Evacuation lift



Safe refuge



Evacuation  
coms



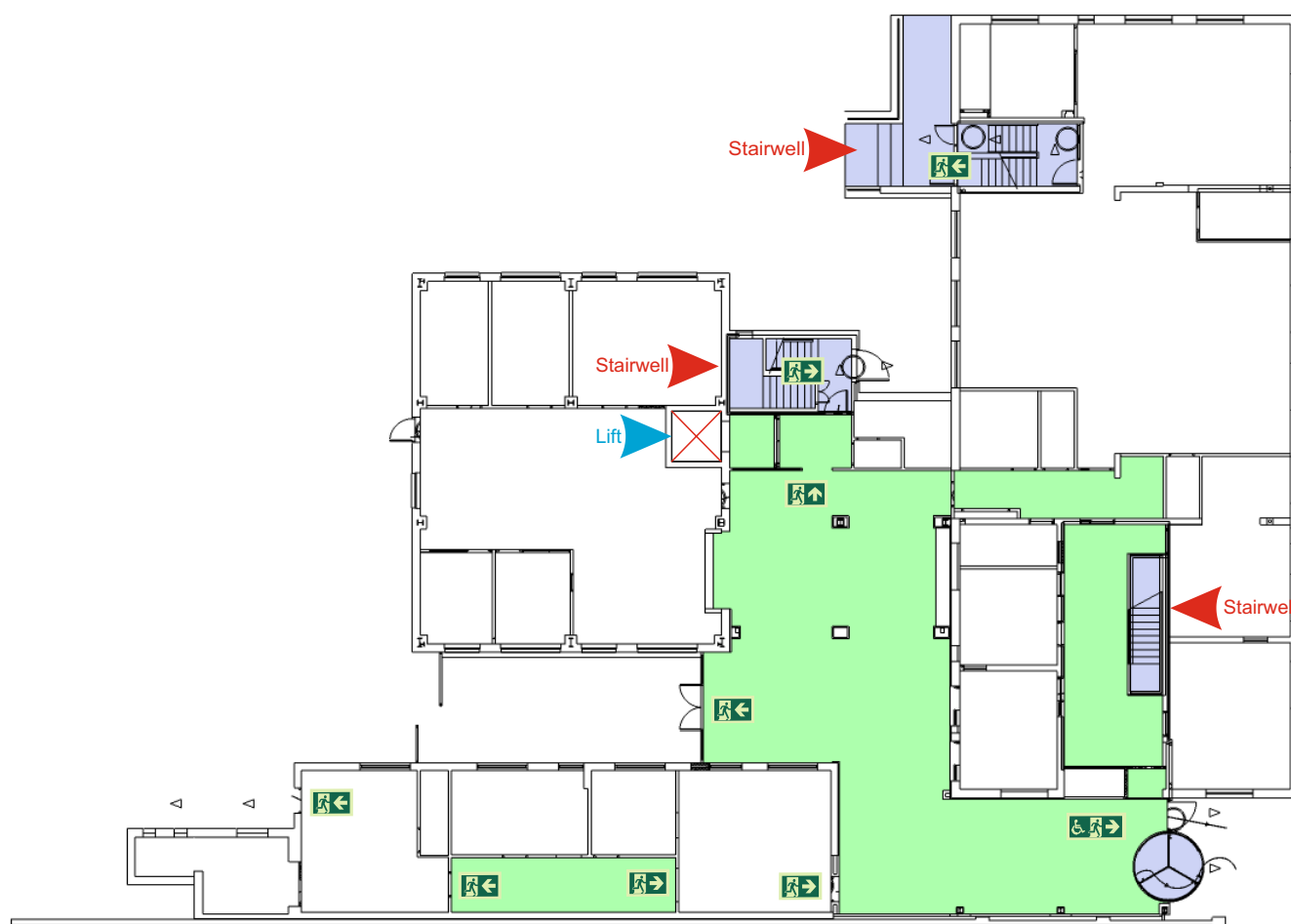
Non  
evacuation  
lift

# Generic Emergency Evacuation Plan

Loughborough  
University

## Bridgeman

LAST UPDATED July 2016



Ground Floor



Accessible final exit



Evacuation lift



Safe refuge



Evacuation  
coms



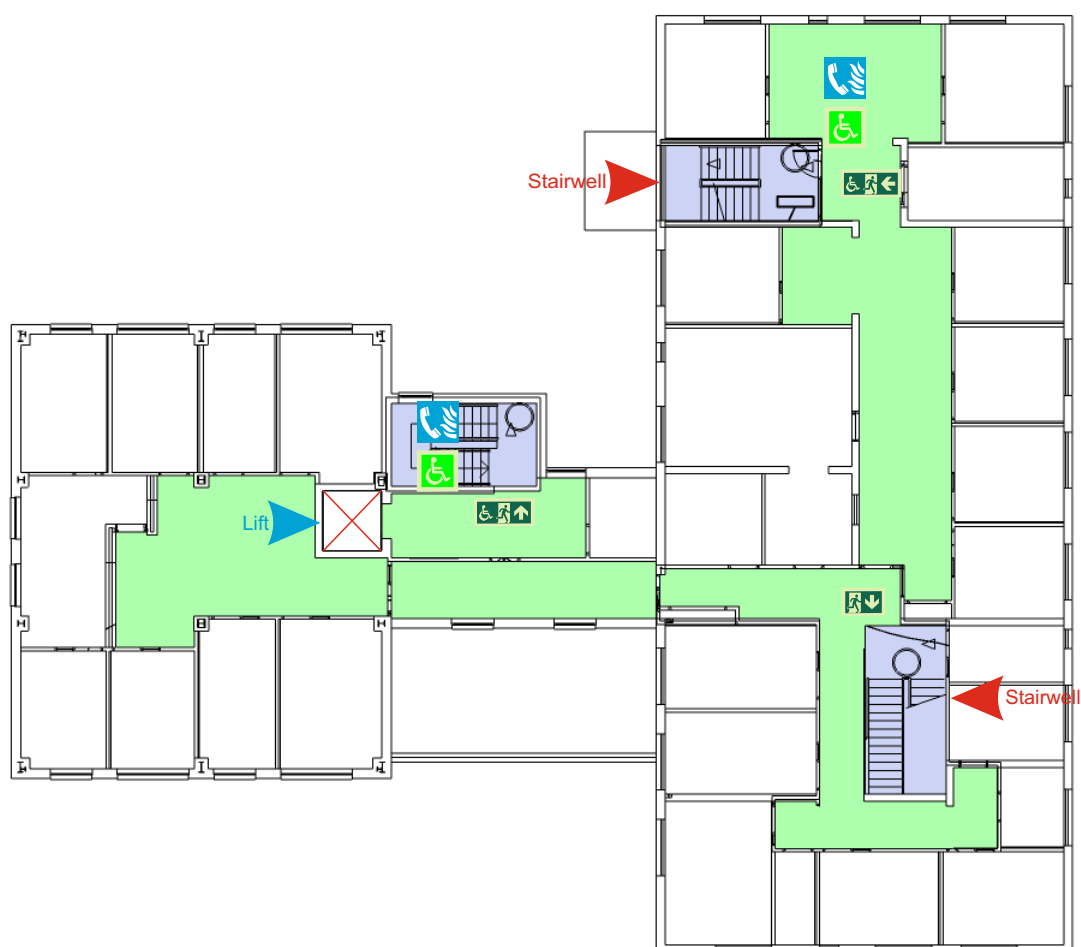
Non  
evacuation  
lift

# Generic Emergency Evacuation Plan

Loughborough  
University

## Bridgeman

LAST UPDATED July 2016



First Floor



Accessible final exit



Evacuation lift



Safe refuge



Evacuation  
coms



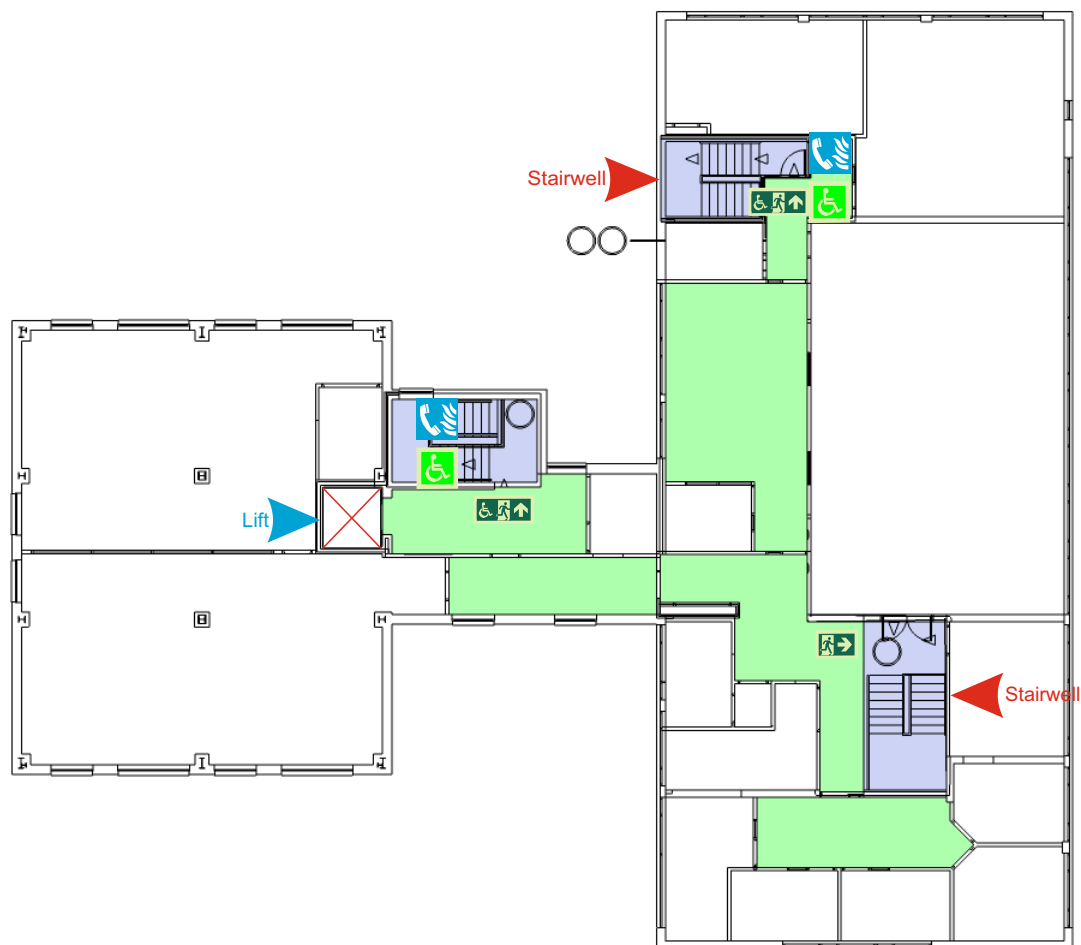
Non  
evacuation  
lift

# Generic Emergency Evacuation Plan

Loughborough  
University

## Bridgeman

LAST UPDATED July 2016



Second Floor



Accessible final exit



Evacuation lift



Safe refuge



Evacuation  
coms



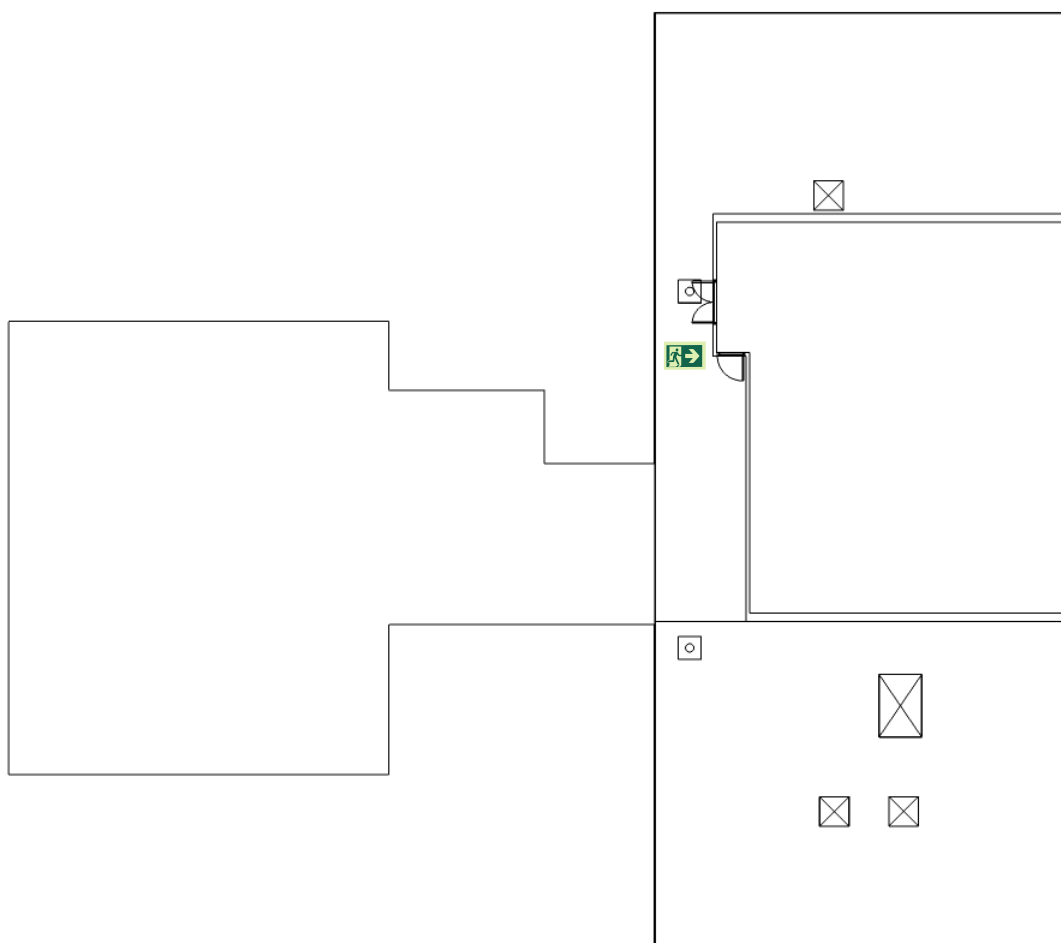
Non  
evacuation  
lift

# Generic Emergency Evacuation Plan

Loughborough  
University

**Bridgeman**

LAST UPDATED July 2016



Roof



Accessible final exit



Evacuation lift



Safe refuge



Evacuation  
coms



Non  
evacuation  
lift