

Faraday Block A

LAST UPDATED December 2016

Purpose:

The purpose of a Generic Emergency Evacuation Plan (GEEP) is to enable visitors to the building with restricted mobility or those who may not be able to evacuate unaided to become familiar with the layout, evacuation procedures, available equipment and communication devices.

If you feel that this document does not provide you with sufficient information or that you require further assistance, please contact the Loughborough University Fire Officer on 01509 222182.

The building:

Faraday Block A building comprises of 3 floors.
Several accessible fire exits are available at ground level.

Action required on hearing the fire alarm:

If able, you should leave the building immediately by the nearest fire exit (see attached floor plan) and report to the assigned assembly point for the building.

Other recommendations:

It is recommended that all visitors to the Faraday Block A building should familiarise themselves with the fire alarm signals and floor layout. Floor plans and evacuation equipment locations have been provided with this document.

Equipment provided:

Accessible fire exits are available on the ground floor of the building.



YOUR ASSEMBLY POINT IS:

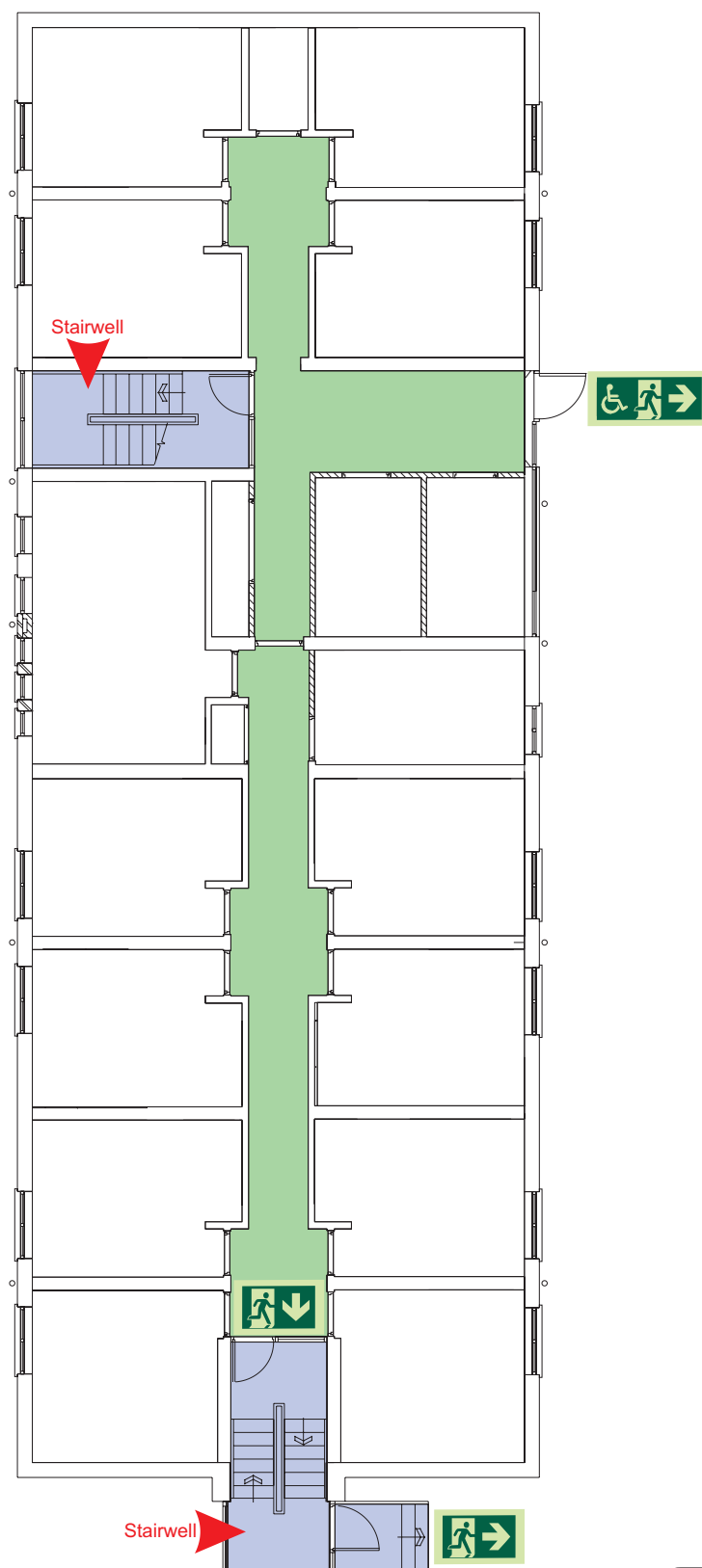
Fire Assembly Point 23

Generic Emergency Evacuation Plan

Loughborough
University

Faraday Block A

LAST UPDATED December 2016



Accessible final exit



Evacuation lift



Safe refuge



Evacuation
coms



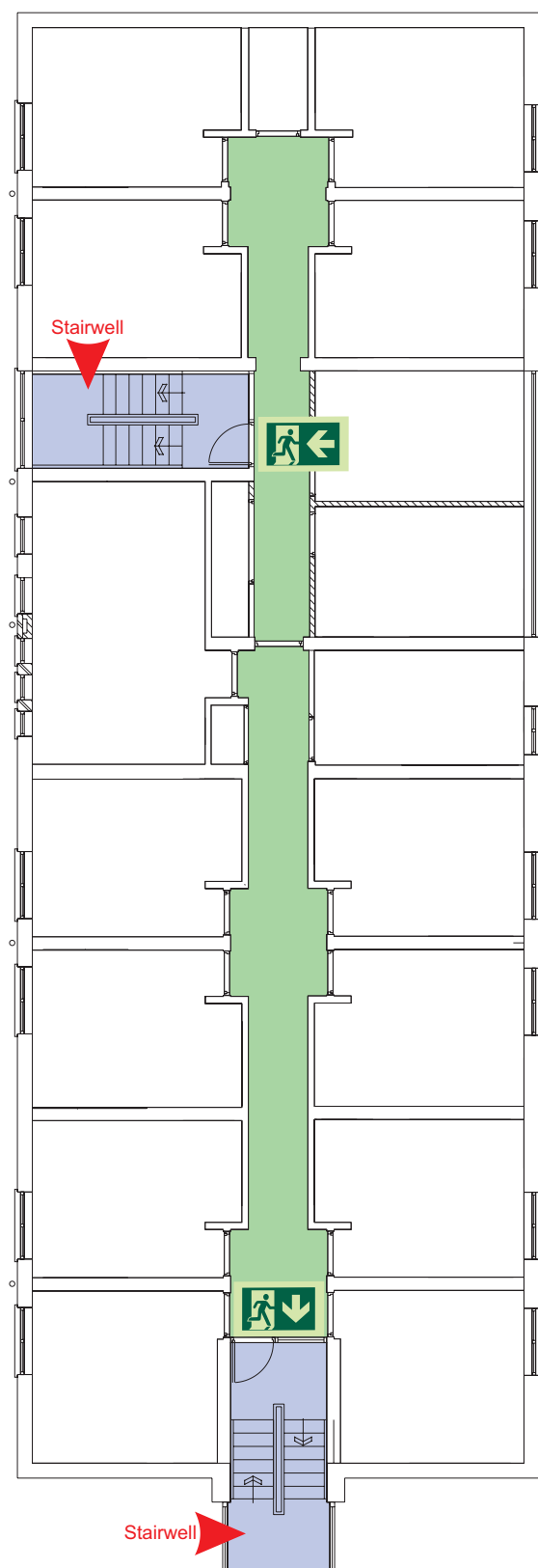
Non
evacuation
lift

Generic Emergency Evacuation Plan

Loughborough
University

Faraday Block A

LAST UPDATED December 2016



First



Accessible final exit



Evacuation lift



Safe refuge



Evacuation
coms



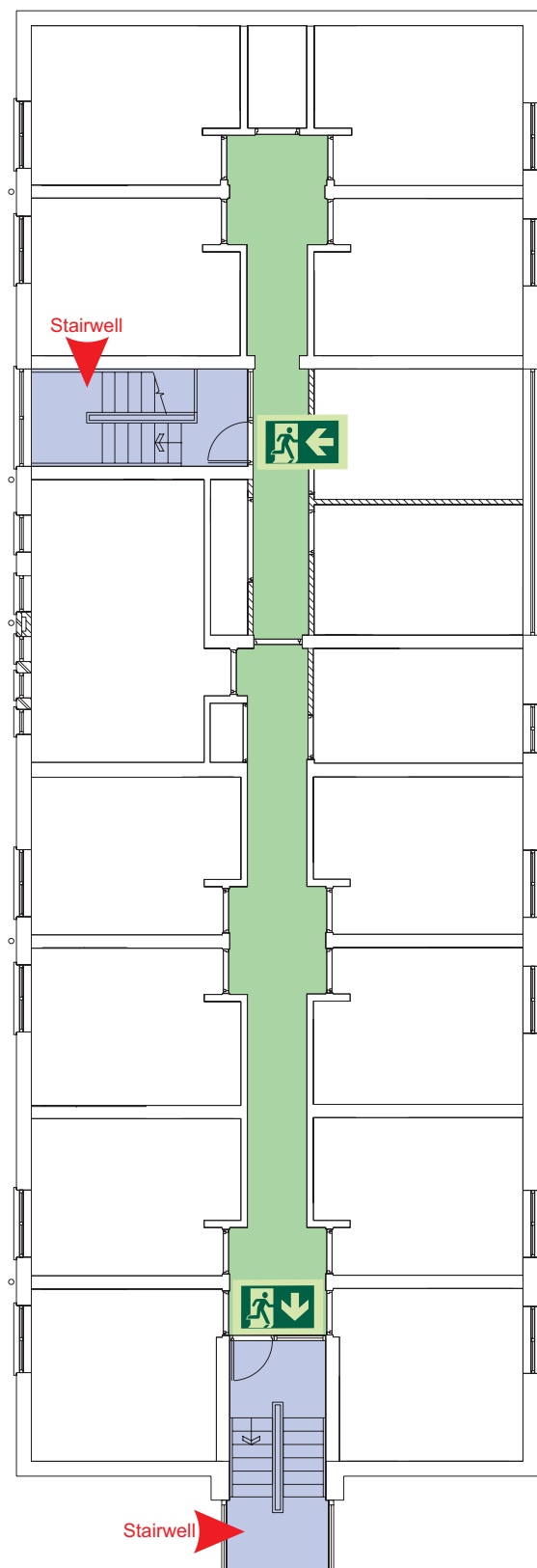
Non
evacuation
lift

Generic Emergency Evacuation Plan

Loughborough
University

Faraday Block A

LAST UPDATED December 2016



Second



Accessible final exit



Evacuation lift



Safe refuge



Evacuation
coms



Non
evacuation
lift

FIRE ESCAPE PLAN

LOUGHBOROUGH UNIVERSITY FIRE INSTRUCTIONS

ANY PERSON DISCOVERING A FIRE



Sound the alarm.
Operate the nearest fire alarm call point.



Telephone Security on the emergency
number 0800 526966.



Do not attack fire with extinguisher
unless trained to do so.

ON HEARING THE ALARM



Evacuate building and go to assembly
point.

Your assembly point is:-

Assembly Point 23

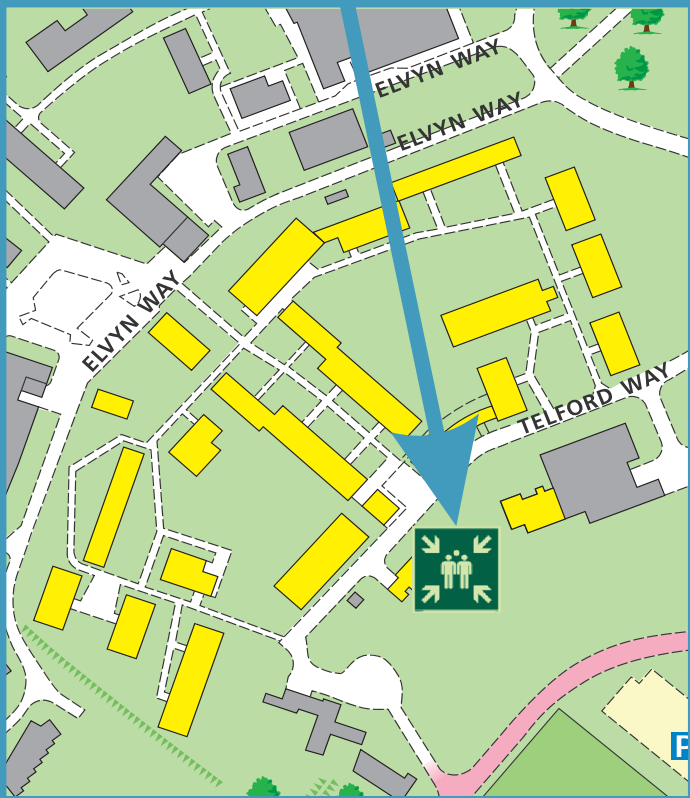


When alarm is given - do not panic, do
not run.
Leave the building following the fire
emergency exit signs.

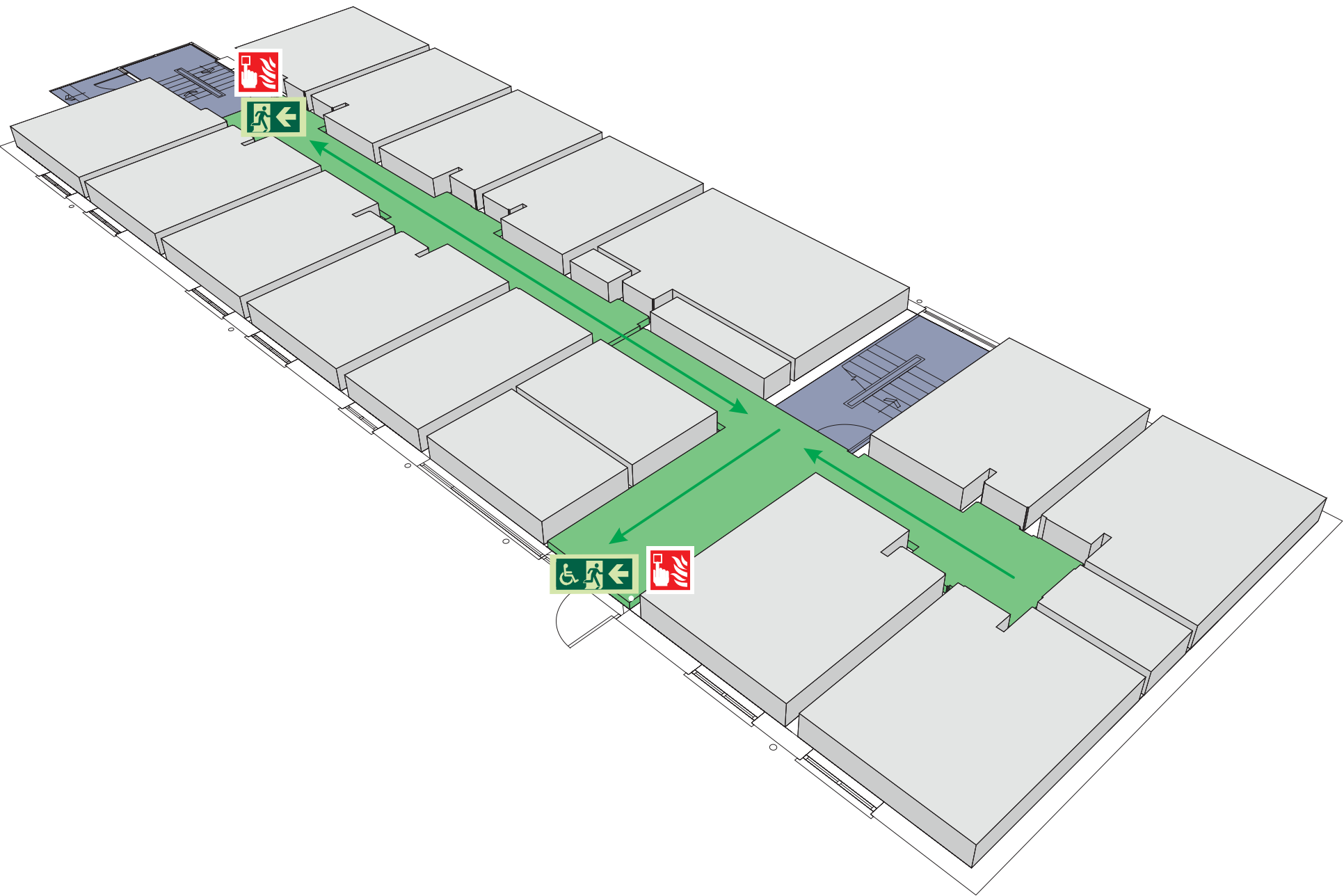


Do not re-enter the building unless told
to do so by the Fire Marshall, Warden or
Fire Service.

ASSEMBLY POINT 23 IS ALLOCATED TO THE
BUILDINGS SHOWN IN YELLOW



Faraday Block A Ground Floor



Fire alarm
Call point



Fire exit



Wheelchair
accessible exit



Fire escape route



Assembly point



Safe refuge



Evac lift



Evac coms



Non evac coms

Loughborough
University

FIRE ESCAPE PLAN

LOUGHBOROUGH UNIVERSITY FIRE INSTRUCTIONS

ANY PERSON DISCOVERING A FIRE



Sound the alarm.
Operate the nearest fire alarm call point.



Telephone Security on the emergency
number 0800 526966.



Do not attack fire with extinguisher
unless trained to do so.

ON HEARING THE ALARM



Evacuate building and go to assembly
point.

Your assembly point is:-

Assembly Point 23

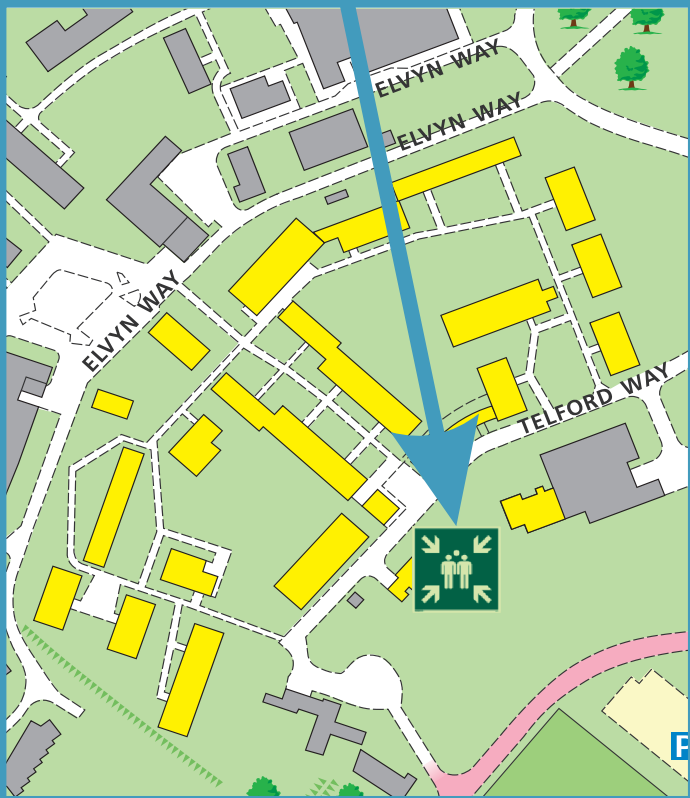


When alarm is given - do not panic, do
not run.
Leave the building following the fire
emergency exit signs.

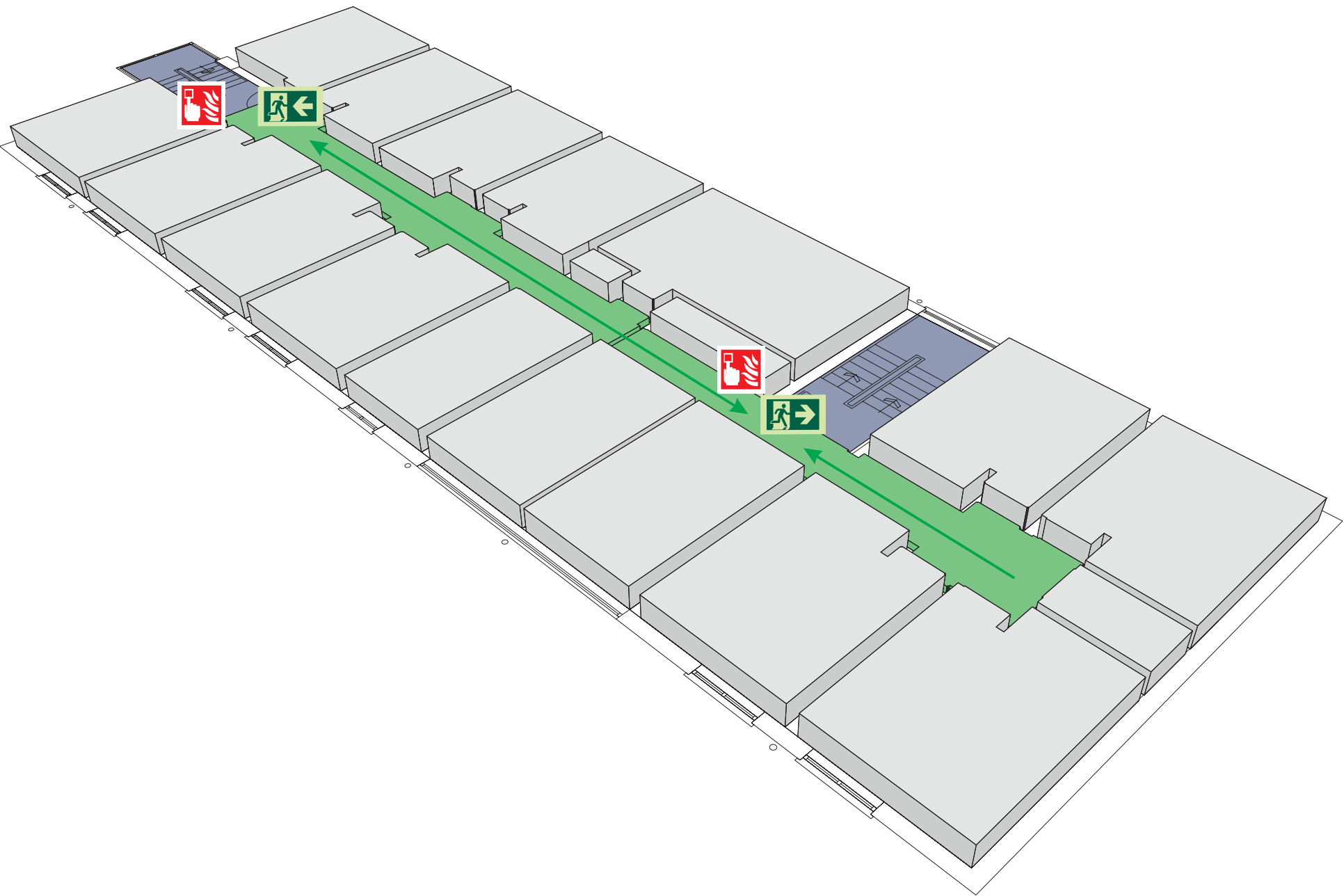


Do not re-enter the building unless told
to do so by the Fire Marshall, Warden or
Fire Service.

ASSEMBLY POINT 23 IS ALLOCATED TO THE
BUILDINGS SHOWN IN YELLOW



Faraday Block A First Floor



Fire alarm
Call point



Fire exit



Wheelchair
accessible exit



Fire escape route



Assembly point



Safe refuge



Evac lift



Evac coms



Non evac coms

Loughborough
University

FIRE ESCAPE PLAN

LOUGHBOROUGH UNIVERSITY FIRE INSTRUCTIONS

ANY PERSON DISCOVERING A FIRE



Sound the alarm.
Operate the nearest fire alarm call point.



Telephone Security on the emergency
number 0800 526966.



Do not attack fire with extinguisher
unless trained to do so.

ON HEARING THE ALARM



Evacuate building and go to assembly
point.

Your assembly point is:-

Assembly Point 23

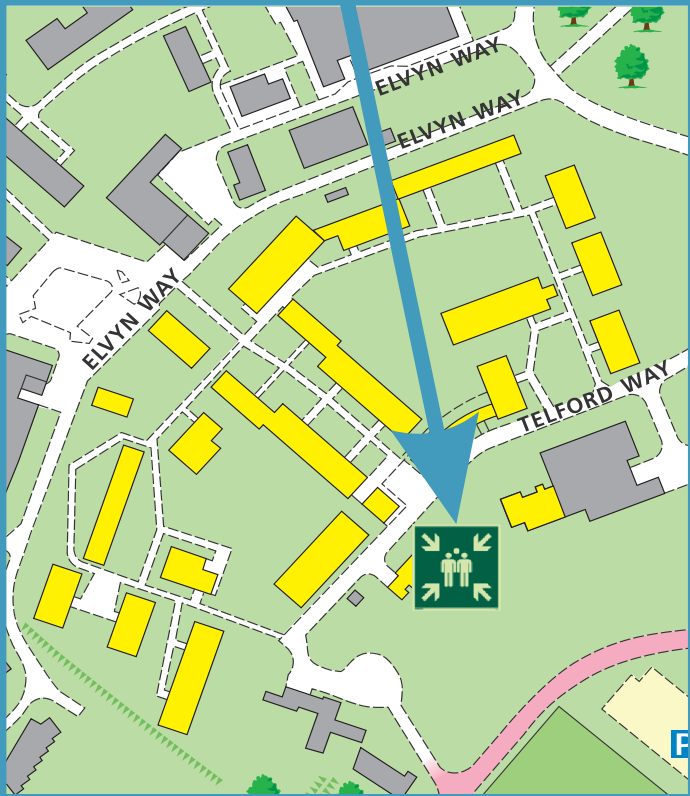


When alarm is given - do not panic, do
not run.
Leave the building following the fire
emergency exit signs.

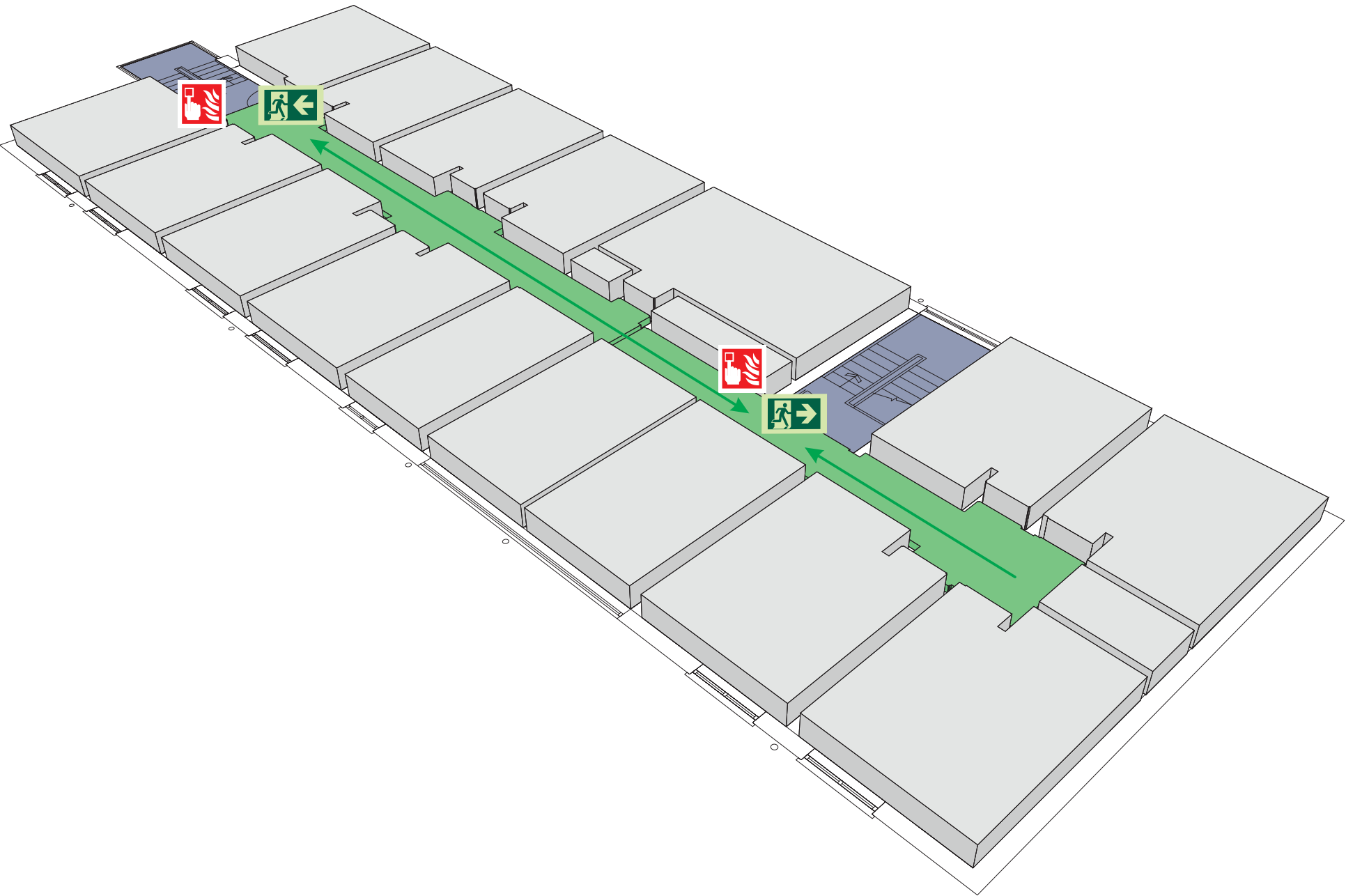


Do not re-enter the building unless told
to do so by the Fire Marshall, Warden or
Fire Service.

ASSEMBLY POINT 23 IS ALLOCATED TO THE
BUILDINGS SHOWN IN YELLOW



Faraday Block A Second Floor



Fire alarm
Call point



Fire exit



Wheelchair
accessible exit



Fire escape route



Assembly point



Safe refuge



Evac lift



Evac coms



Non evac coms

Loughborough
University

Faraday Block B

LAST UPDATED December 2016

Purpose:

The purpose of a Generic Emergency Evacuation Plan (GEEP) is to enable visitors to the building with restricted mobility or those who may not be able to evacuate unaided to become familiar with the layout, evacuation procedures, available equipment and communication devices.

If you feel that this document does not provide you with sufficient information or that you require further assistance, please contact the Loughborough University Fire Officer on 01509 222182.

The building:

Faraday Block B building comprises of 3 floors.
Several accessible fire exits are available at ground level.

Action required on hearing the fire alarm:

If able, you should leave the building immediately by the nearest fire exit (see attached floor plan) and report to the assigned assembly point for the building.

Other recommendations:

It is recommended that all visitors to the Faraday Block B building should familiarise themselves with the fire alarm signals and floor layout. Floor plans and evacuation equipment locations have been provided with this document.

Equipment provided:

Accessible fire exits are available on the ground floor of the building.



YOUR ASSEMBLY POINT IS:

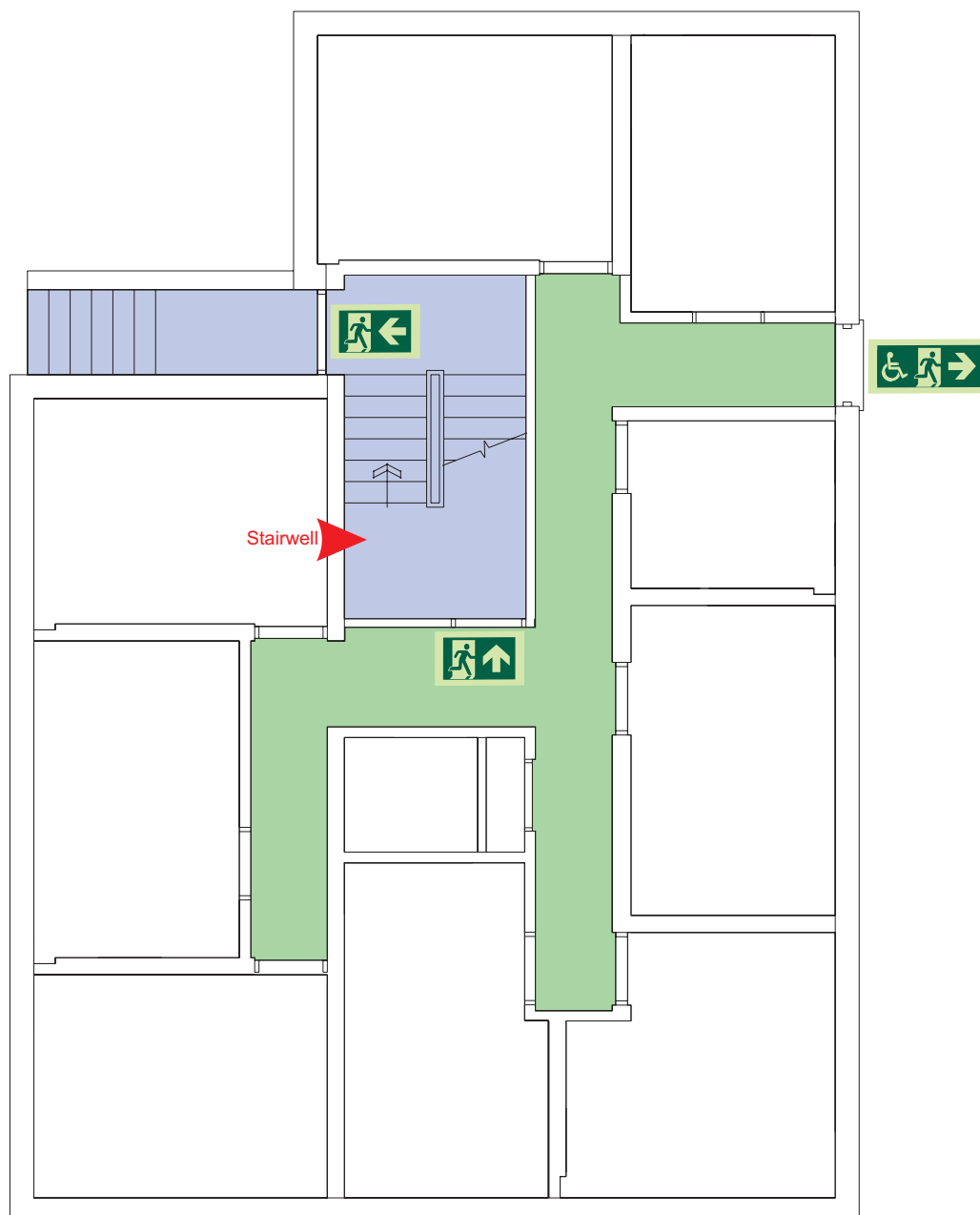
Fire Assembly Point 23

Generic Emergency Evacuation Plan

Loughborough
University

Faraday Block B

LAST UPDATED December 2016



Ground



Accessible final exit



Evacuation lift



Safe refuge



Evacuation
coms



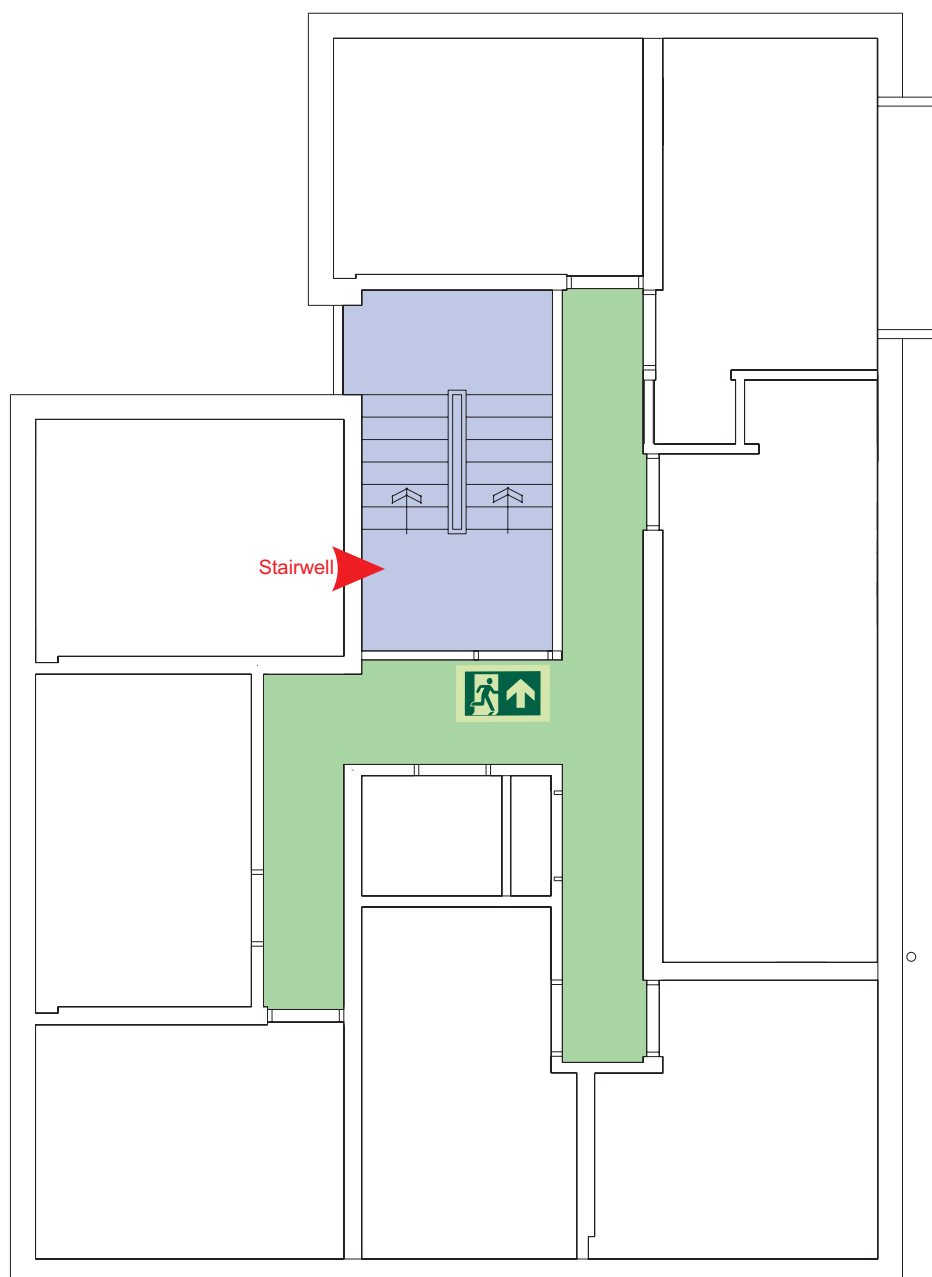
Non
evacuation
lift

Generic Emergency Evacuation Plan

Loughborough
University

Faraday Block B

LAST UPDATED December 2016



First



Accessible final exit



Evacuation lift



Safe refuge



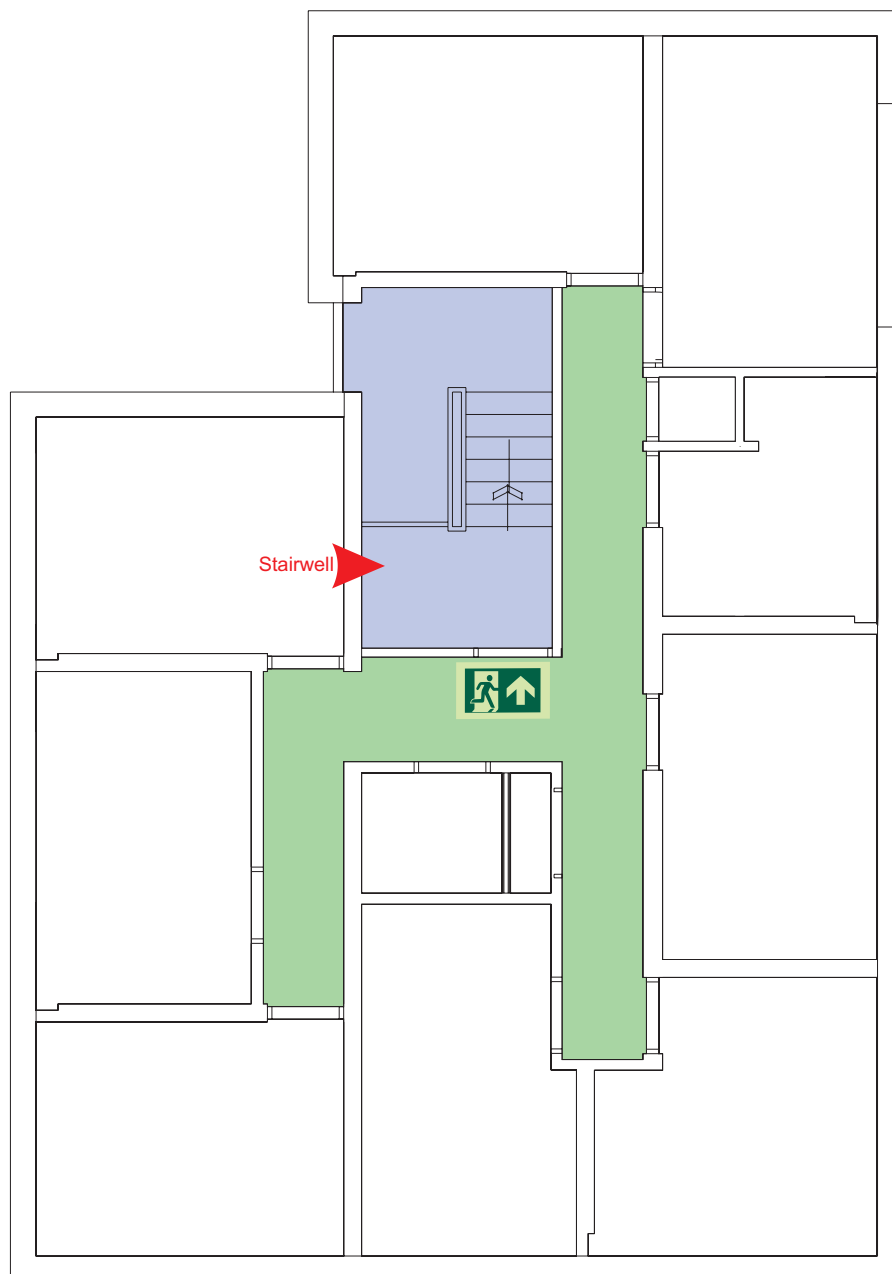
Evacuation
coms



Non
evacuation
lift

Faraday Block B

LAST UPDATED December 2016



Second



Accessible final exit



Evacuation lift



Safe refuge



Evacuation
coms



Non
evacuation
lift

FIRE ESCAPE PLAN

LOUGHBOROUGH UNIVERSITY FIRE INSTRUCTIONS

ANY PERSON DISCOVERING A FIRE



Sound the alarm.
Operate the nearest fire alarm call point.



Telephone Security on the emergency
number 0800 526966.



Do not attack fire with extinguisher
unless trained to do so.

ON HEARING THE ALARM



Evacuate building and go to assembly
point.
Your assembly point is:-

Assembly Point 23

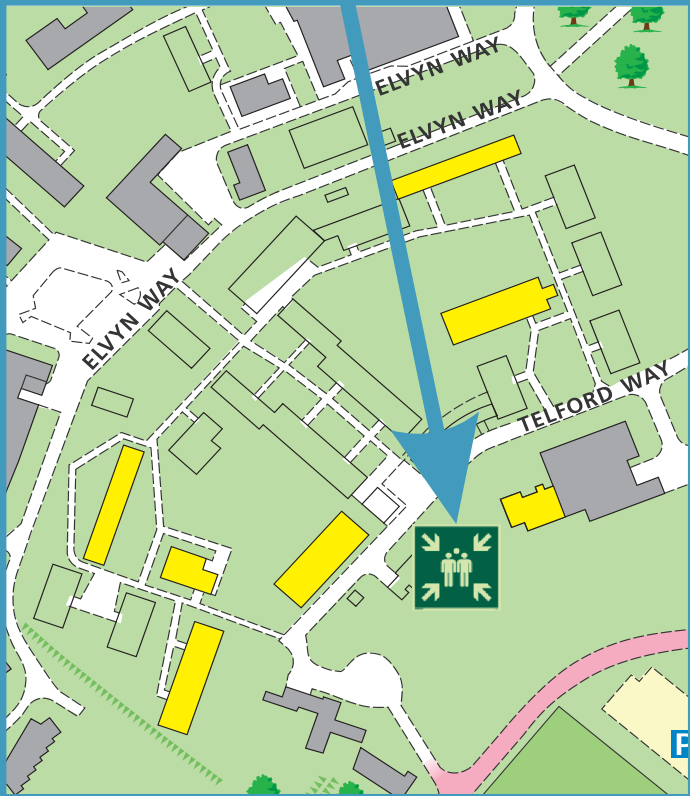


When alarm is given - do not panic, do
not run.
Leave the building following the fire
emergency exit signs.

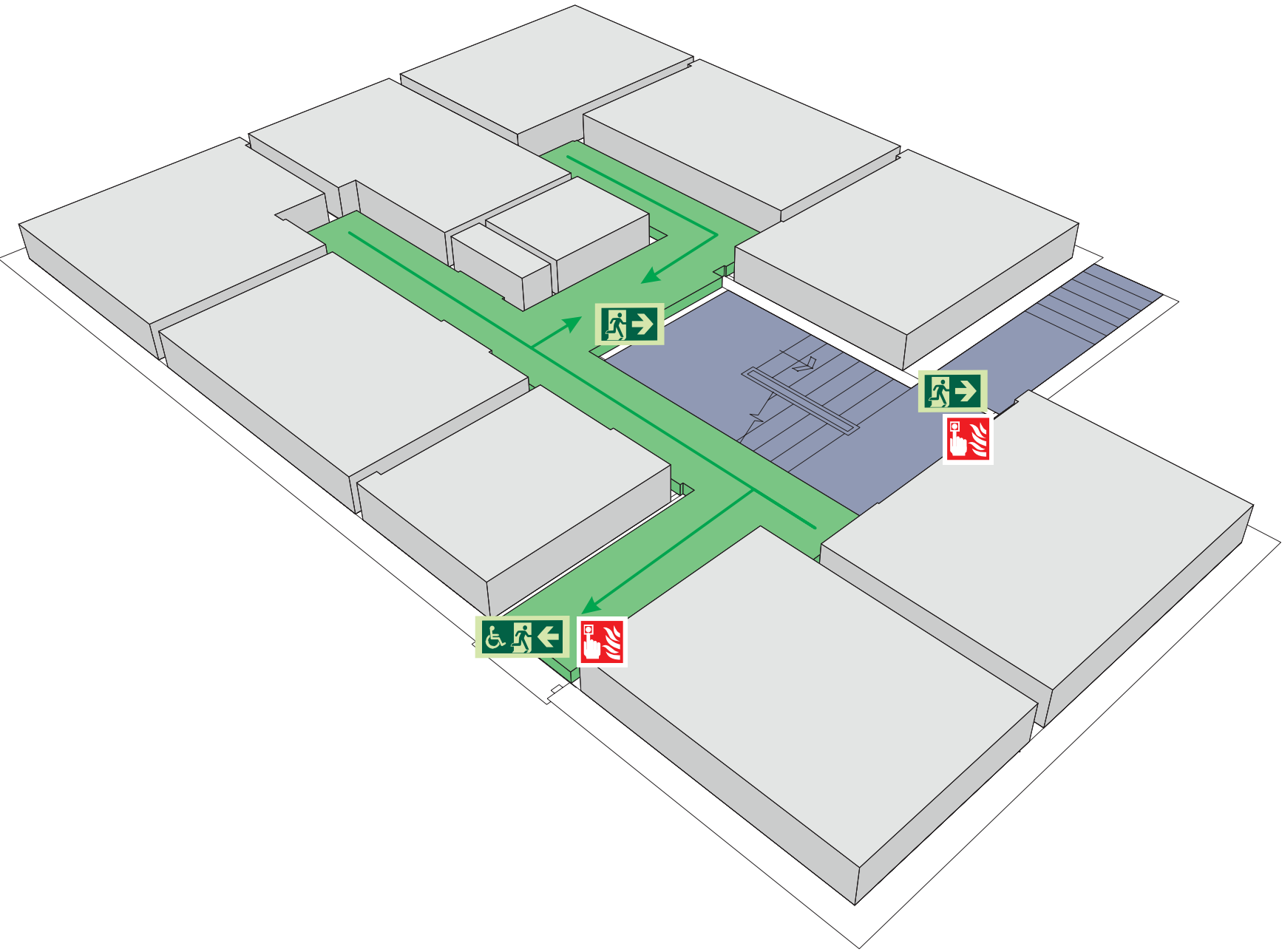


Do not re-enter the building unless told
to do so by the Fire Marshall, Warden or
Fire Service.

ASSEMBLY POINT 23 IS ALLOCATED TO THE
BUILDINGS SHOWN IN YELLOW



Faraday Block B Ground Floor



Fire alarm
Call point



Fire exit



Wheelchair
accessible exit



Fire escape route



Assembly point



Safe refuge



Evac lift



Evac coms



Non evac coms

Loughborough
University

FIRE ESCAPE PLAN

LOUGHBOROUGH UNIVERSITY FIRE INSTRUCTIONS

ANY PERSON DISCOVERING A FIRE



Sound the alarm.
Operate the nearest fire alarm call point.



Telephone Security on the emergency
number 0800 526966.



Do not attack fire with extinguisher
unless trained to do so.

ON HEARING THE ALARM



Evacuate building and go to assembly
point.
Your assembly point is:-

Assembly Point 23

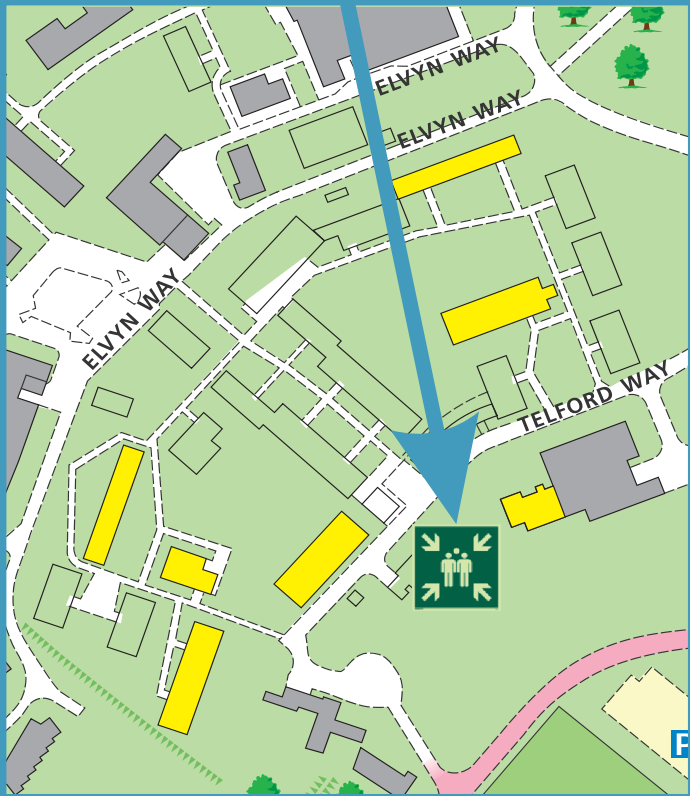


When alarm is given - do not panic, do
not run.
Leave the building following the fire
emergency exit signs.

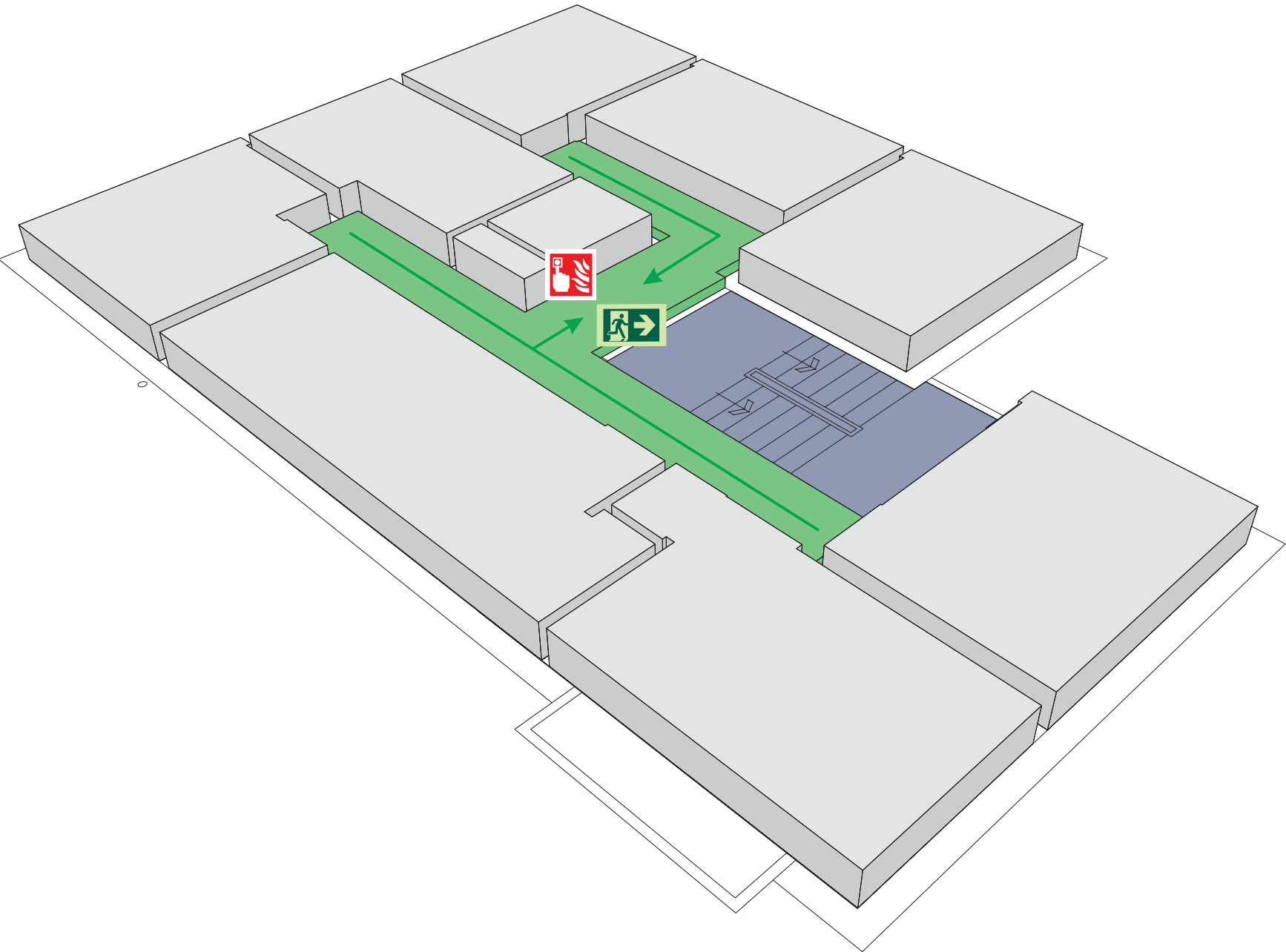


Do not re-enter the building unless told
to do so by the Fire Marshall, Warden or
Fire Service.

ASSEMBLY POINT 23 IS ALLOCATED TO THE
BUILDINGS SHOWN IN YELLOW



Faraday Block B First Floor



Fire alarm
Call point



Fire exit



Wheelchair
accessible exit



Fire escape route



Assembly point



Safe refuge



Evac lift



Evac coms



Non evac coms

Loughborough
University

FIRE ESCAPE PLAN

LOUGHBOROUGH UNIVERSITY FIRE INSTRUCTIONS

ANY PERSON DISCOVERING A FIRE



Sound the alarm.
Operate the nearest fire alarm call point.



Telephone Security on the emergency
number 0800 526966.



Do not attack fire with extinguisher
unless trained to do so.

ON HEARING THE ALARM



Evacuate building and go to assembly
point.
Your assembly point is:-

Assembly Point 23

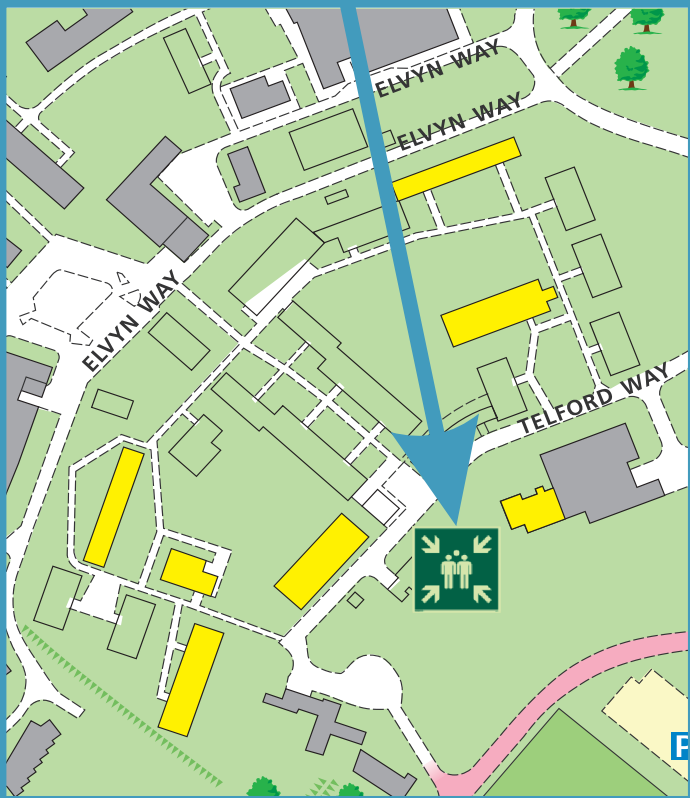


When alarm is given - do not panic, do
not run.
Leave the building following the fire
emergency exit signs.

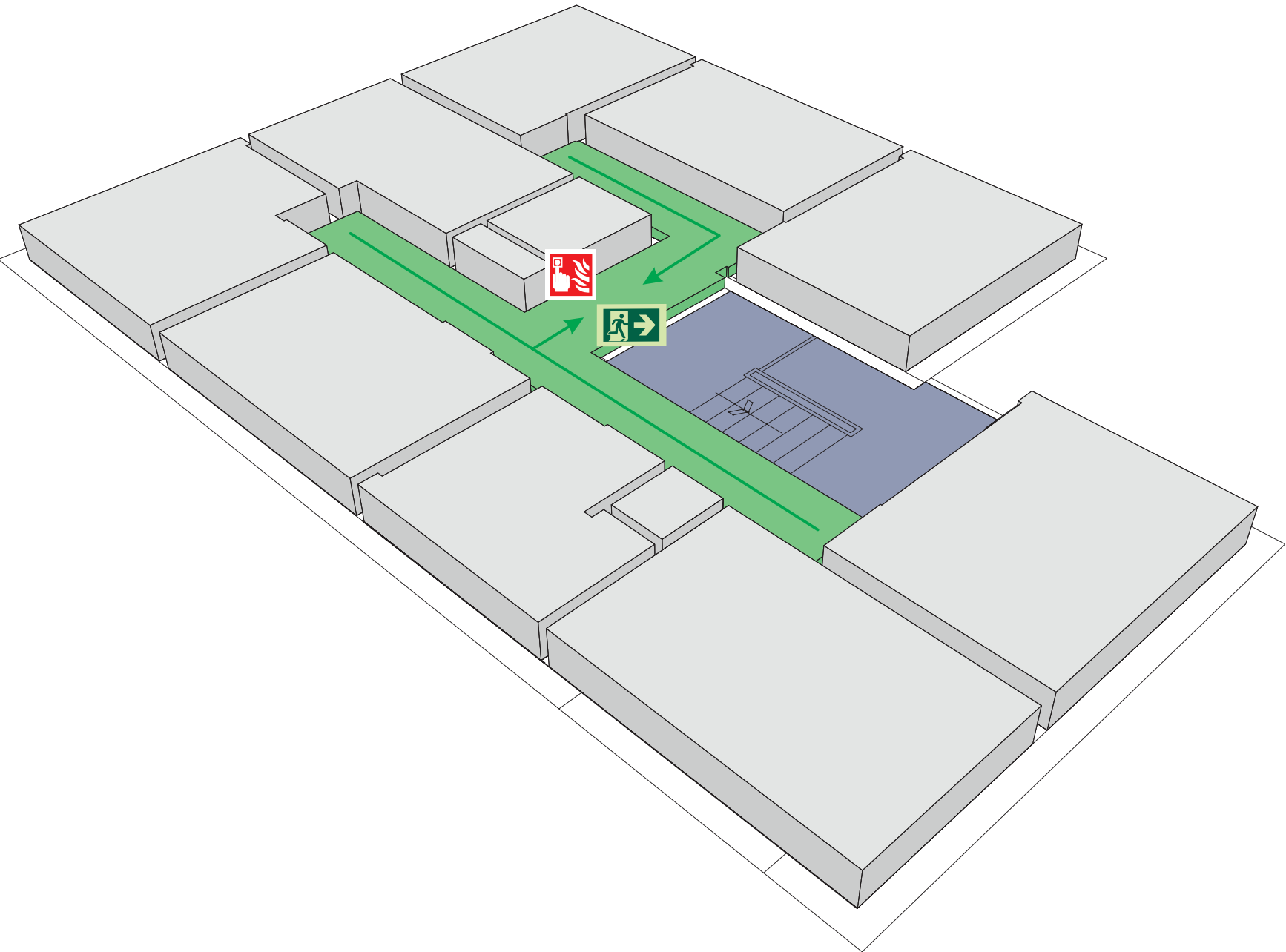


Do not re-enter the building unless told
to do so by the Fire Marshall, Warden or
Fire Service.

ASSEMBLY POINT 23 IS ALLOCATED TO THE
BUILDINGS SHOWN IN YELLOW



Faraday Block B Second Floor



Fire alarm
Call point



Fire exit



Wheelchair
accessible exit



Fire escape route



Assembly point



Safe refuge



Evac lift



Evac coms



Non evac coms

Loughborough
University

Faraday Block BB

LAST UPDATED December 2016

Purpose:

The purpose of a Generic Emergency Evacuation Plan (GEEP) is to enable visitors to the building with restricted mobility or those who may not be able to evacuate unaided to become familiar with the layout, evacuation procedures, available equipment and communication devices.

If you feel that this document does not provide you with sufficient information or that you require further assistance, please contact the Loughborough University Fire Officer on 01509 222182.

The building:

Faraday Block BB building comprises of 3 floors.
Several accessible fire exits are available at ground level.

Action required on hearing the fire alarm:

If able, you should leave the building immediately by the nearest fire exit (see attached floor plan) and report to the assigned assembly point for the building.

Other recommendations:

It is recommended that all visitors to the Faraday Block BB building should familiarise themselves with the fire alarm signals and floor layout. Floor plans and evacuation equipment locations have been provided with this document.

Equipment provided:

Accessible fire exits are available on the ground floor of the building.



YOUR ASSEMBLY POINT IS:

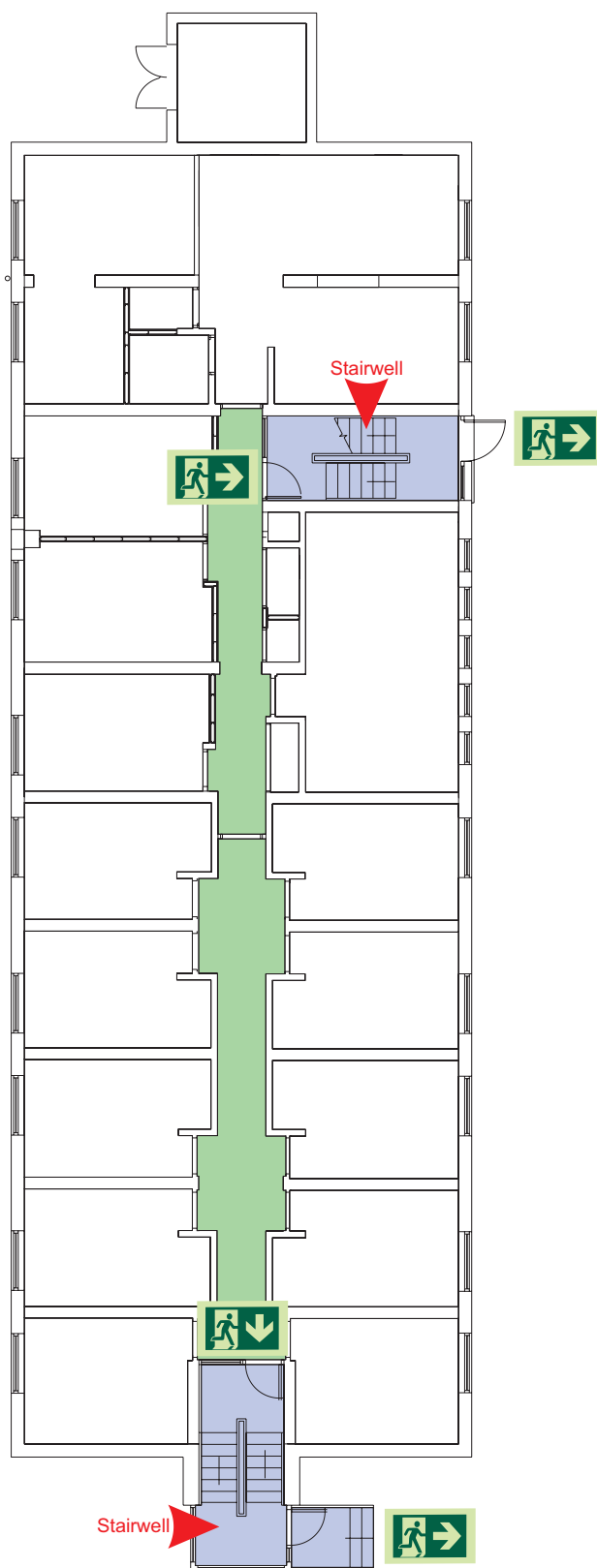
Fire Assembly Point 23

Generic Emergency Evacuation Plan

Loughborough
University

Faraday Block BB

LAST UPDATED December 2016



Ground



Accessible final exit



Evacuation lift



Safe refuge



Evacuation
coms



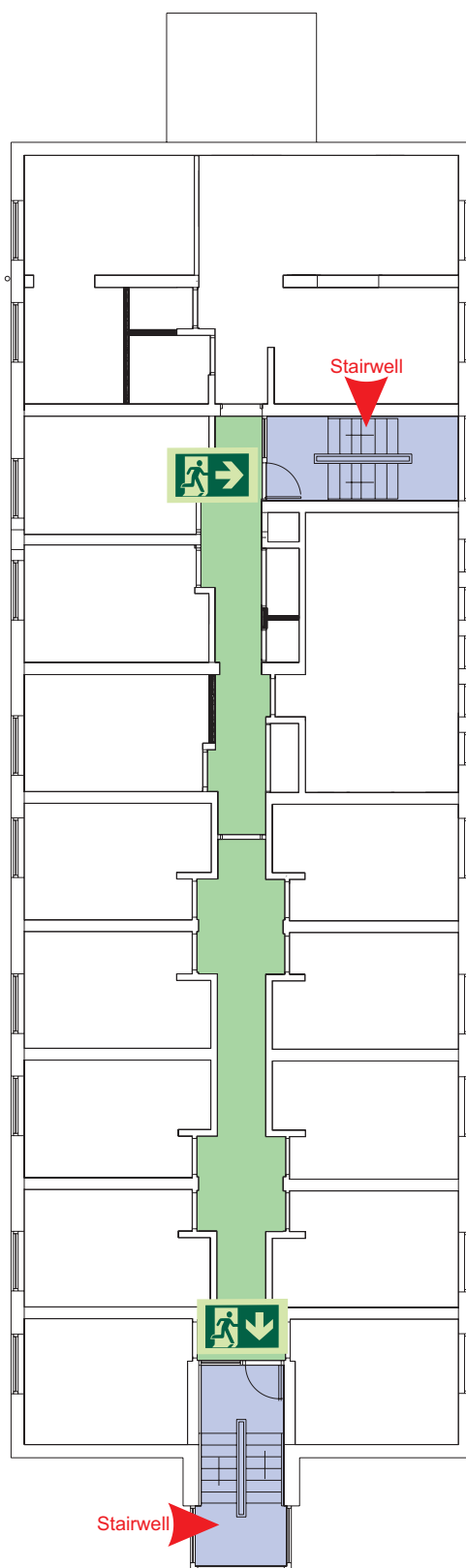
Non
evacuation
lift

Generic Emergency Evacuation Plan

Loughborough
University

Faraday Block BB

LAST UPDATED December 2016



First



Accessible final exit



Evacuation lift



Safe refuge



Evacuation
coms



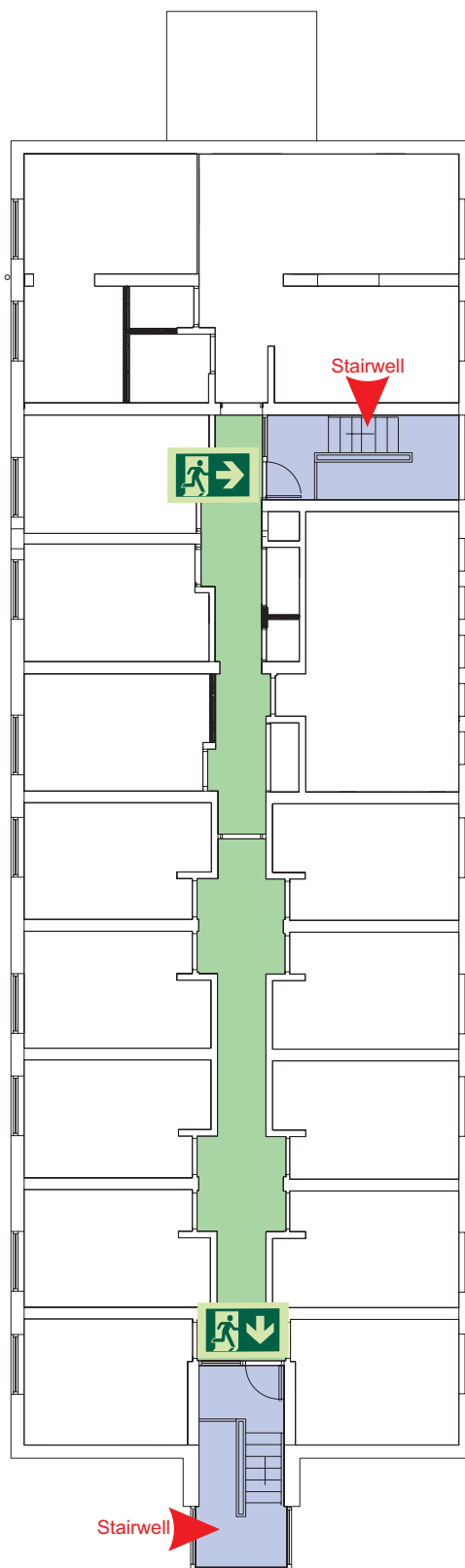
Non
evacuation
lift

Generic Emergency Evacuation Plan

Loughborough
University

Faraday Block BB

LAST UPDATED December 2016



Second



Accessible final exit



Evacuation lift



Safe refuge



Evacuation
coms



Non
evacuation
lift

FIRE ESCAPE PLAN

LOUGHBOROUGH UNIVERSITY FIRE INSTRUCTIONS

ANY PERSON DISCOVERING A FIRE



Sound the alarm.
Operate the nearest fire alarm call point.



Telephone Security on the emergency
number 0800 526966.



Do not attack fire with extinguisher
unless trained to do so.

ON HEARING THE ALARM



Evacuate building and go to assembly
point.

Your assembly point is:-

Assembly Point 23

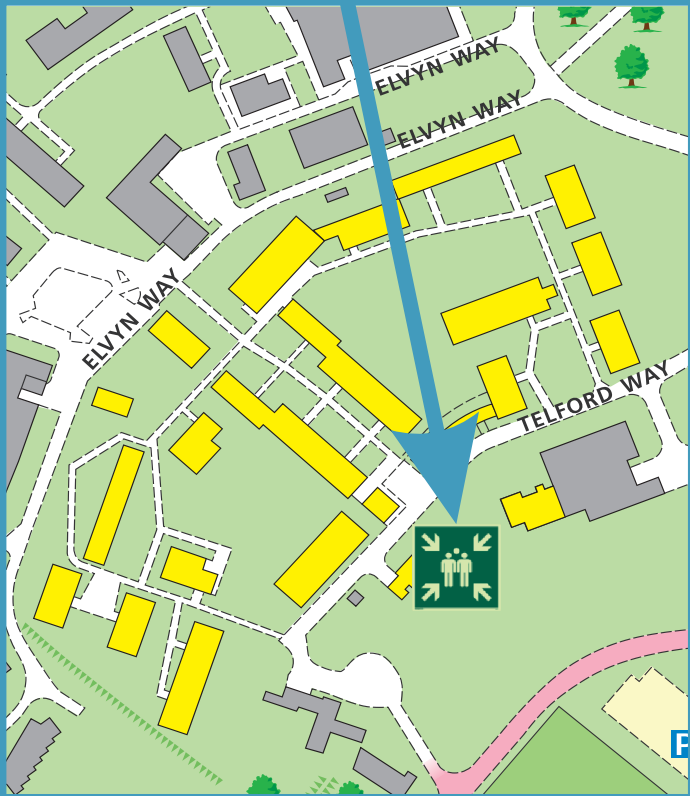


When alarm is given - do not panic, do
not run.
Leave the building following the fire
emergency exit signs.

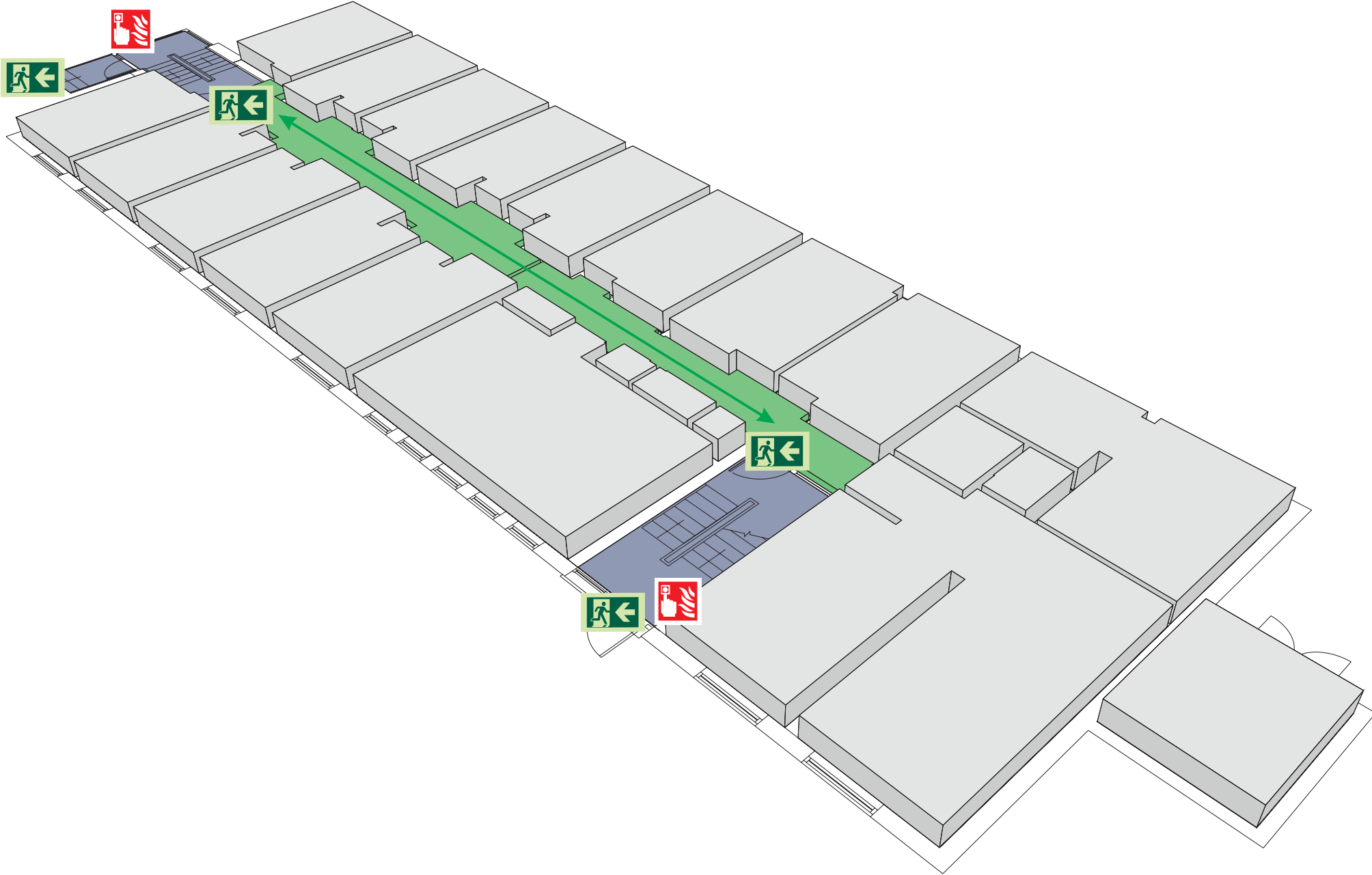


Do not re-enter the building unless told
to do so by the Fire Marshall, Warden or
Fire Service.

ASSEMBLY POINT 23 IS ALLOCATED TO THE
BUILDINGS SHOWN IN YELLOW



Faraday Block BB Ground Floor



Fire alarm
Call point



Fire exit



Wheelchair
accessible exit



Fire escape route



Assembly point



Safe refuge



Evac lift



Evac coms



Non evac coms

Loughborough
University

FIRE ESCAPE PLAN

LOUGHBOROUGH UNIVERSITY FIRE INSTRUCTIONS

ANY PERSON DISCOVERING A FIRE



Sound the alarm.
Operate the nearest fire alarm call point.



Telephone Security on the emergency
number 0800 526966.



Do not attack fire with extinguisher
unless trained to do so.

ON HEARING THE ALARM



Evacuate building and go to assembly
point.
Your assembly point is:-

Assembly Point 23

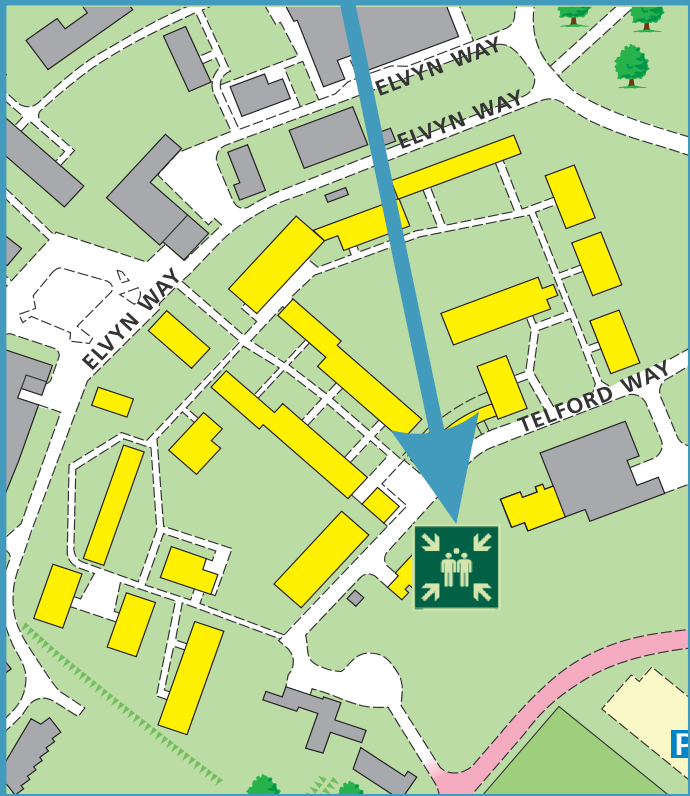


When alarm is given - do not panic, do
not run.
Leave the building following the fire
emergency exit signs.

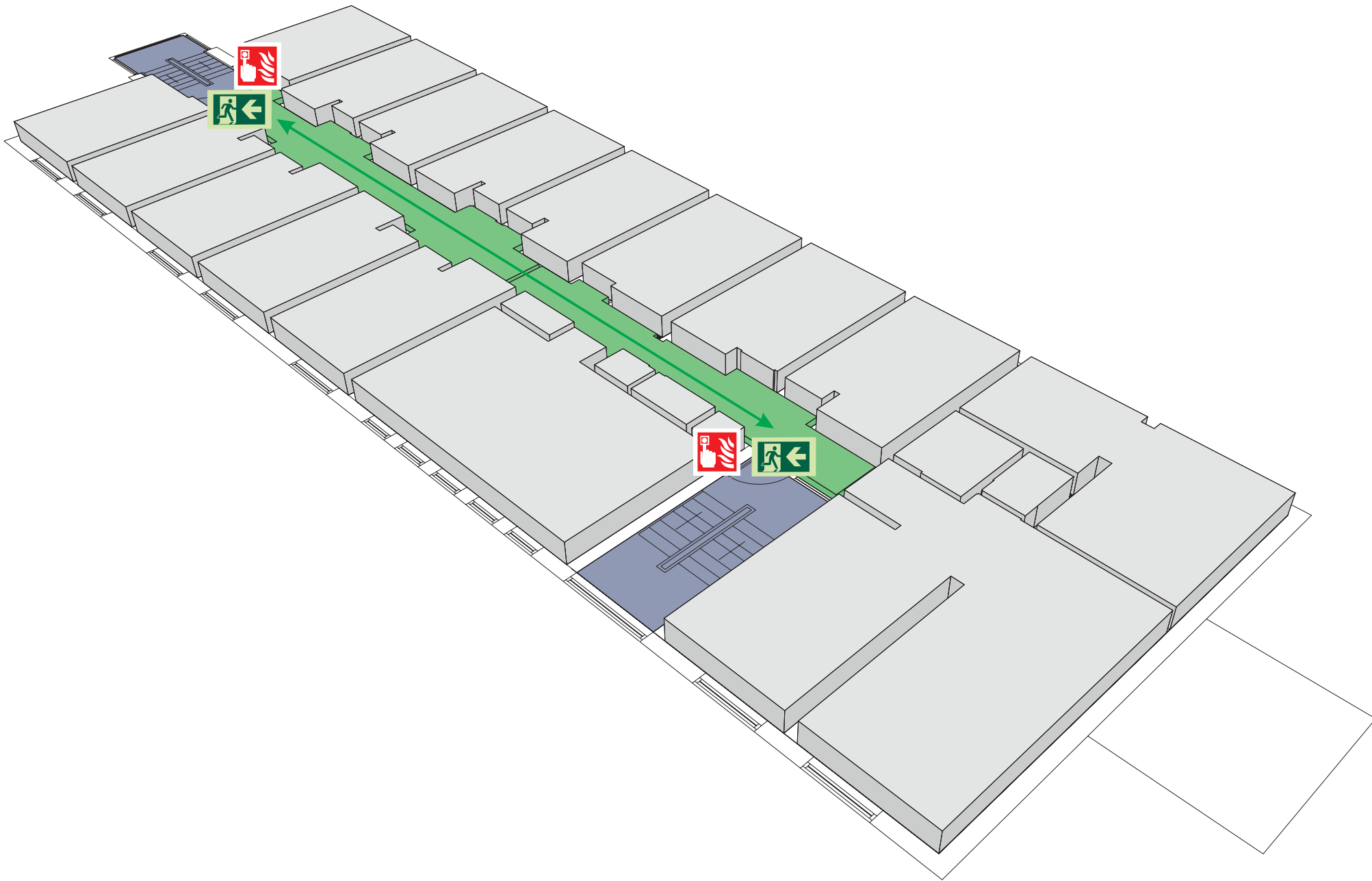


Do not re-enter the building unless told
to do so by the Fire Marshall, Warden or
Fire Service.

ASSEMBLY POINT 23 IS ALLOCATED TO THE
BUILDINGS SHOWN IN YELLOW



Faraday Block BB First Floor



Fire alarm
Call point



Fire exit



Wheelchair
accessible exit



Fire escape route



Assembly point



Safe refuge



Evac lift



Evac coms



Non evac coms

Loughborough
University

FIRE ESCAPE PLAN

LOUGHBOROUGH UNIVERSITY FIRE INSTRUCTIONS

ANY PERSON DISCOVERING A FIRE



Sound the alarm.
Operate the nearest fire alarm call point.



Telephone Security on the emergency
number 0800 526966.



Do not attack fire with extinguisher
unless trained to do so.

ON HEARING THE ALARM



Evacuate building and go to assembly
point.
Your assembly point is:-

Assembly Point 23

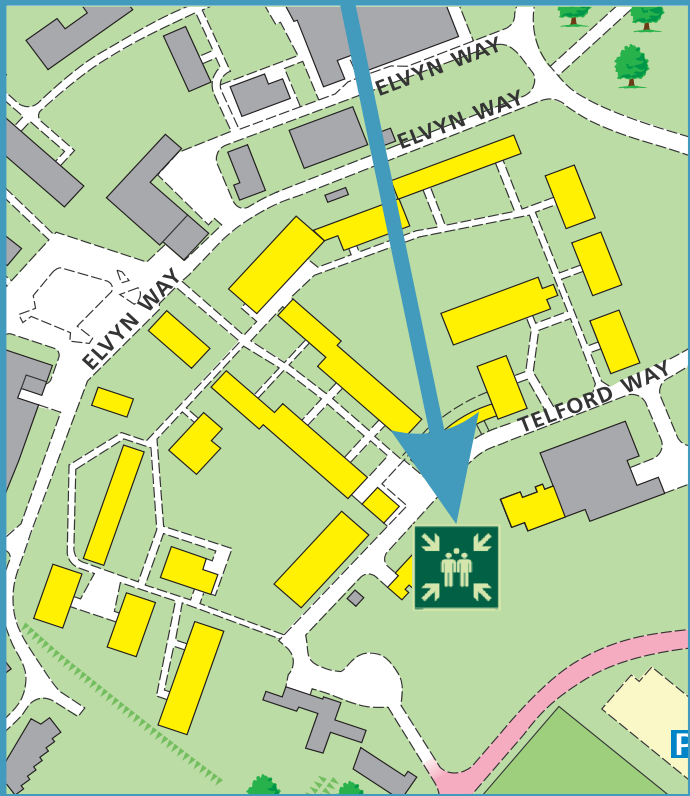


When alarm is given - do not panic, do
not run.
Leave the building following the fire
emergency exit signs.

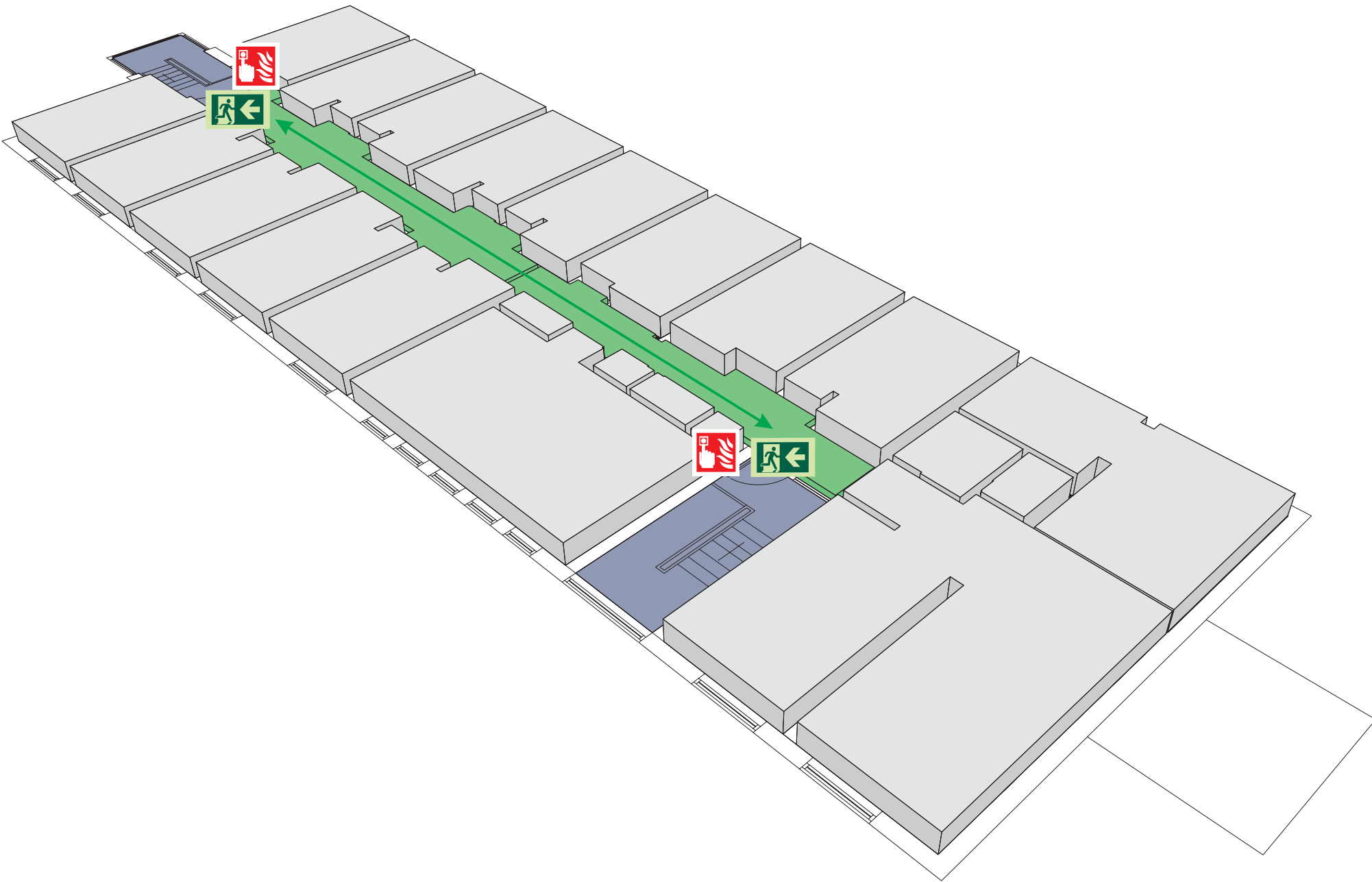


Do not re-enter the building unless told
to do so by the Fire Marshall, Warden or
Fire Service.

ASSEMBLY POINT 23 IS ALLOCATED TO THE
BUILDINGS SHOWN IN YELLOW



Faraday Block BB Second Floor



Fire alarm
Call point



Fire exit



Wheelchair
accessible exit



Fire escape route



Assembly point



Safe refuge



Evac lift



Evac coms



Non evac coms

Loughborough
University

Faraday Blocks C-H, L-N, P-T, V-Z, AA & BB

LAST UPDATED December 2016

Purpose:

The purpose of a Generic Emergency Evacuation Plan (GEEP) is to enable visitors to the building with restricted mobility or those who may not be able to evacuate unaided to become familiar with the layout, evacuation procedures, available equipment and communication devices.

If you feel that this document does not provide you with sufficient information or that you require further assistance, please contact the Loughborough University Fire Officer on 01509 222182.

The building:

Faraday Blocks C-H, L-N, P-T, V-Z, AA & BB buildings comprise of 2 floors.
A single accessible fire exit is available at ground level.

Action required on hearing the fire alarm:

If able, you should leave the building immediately by the nearest fire exit (see attached floor plan) and report to the assigned assembly point for the building.

Other recommendations:

It is recommended that all visitors to the Faraday Blocks C-H, L-N, P-T, V-Z, AA & BB buildings should familiarise themselves with the fire alarm signals and floor layout. Floor plans and evacuation equipment locations have been provided with this document.

Equipment provided:

Accessible fire exits are available on the ground floor of the building.



YOUR ASSEMBLY POINT IS:

Fire Assembly Point 23

Faraday Block J

LAST UPDATED December 2016

Purpose:

The purpose of a Generic Emergency Evacuation Plan (GEEP) is to enable visitors to the building with restricted mobility or those who may not be able to evacuate unaided to become familiar with the layout, evacuation procedures, available equipment and communication devices.

If you feel that this document does not provide you with sufficient information or that you require further assistance, please contact the Loughborough University Fire Officer on 01509 222182.

The building:

Faraday Block J building comprises of 3 floors.
Several accessible fire exits are available at ground level.

Action required on hearing the fire alarm:

If able, you should leave the building immediately by the nearest fire exit (see attached floor plan) and report to the assigned assembly point for the building.

Other recommendations:

It is recommended that all visitors to the Faraday Block J building should familiarise themselves with the fire alarm signals and floor layout. Floor plans and evacuation equipment locations have been provided with this document.

Equipment provided:

Accessible fire exits are available on the ground floor of the building.



YOUR ASSEMBLY POINT IS:

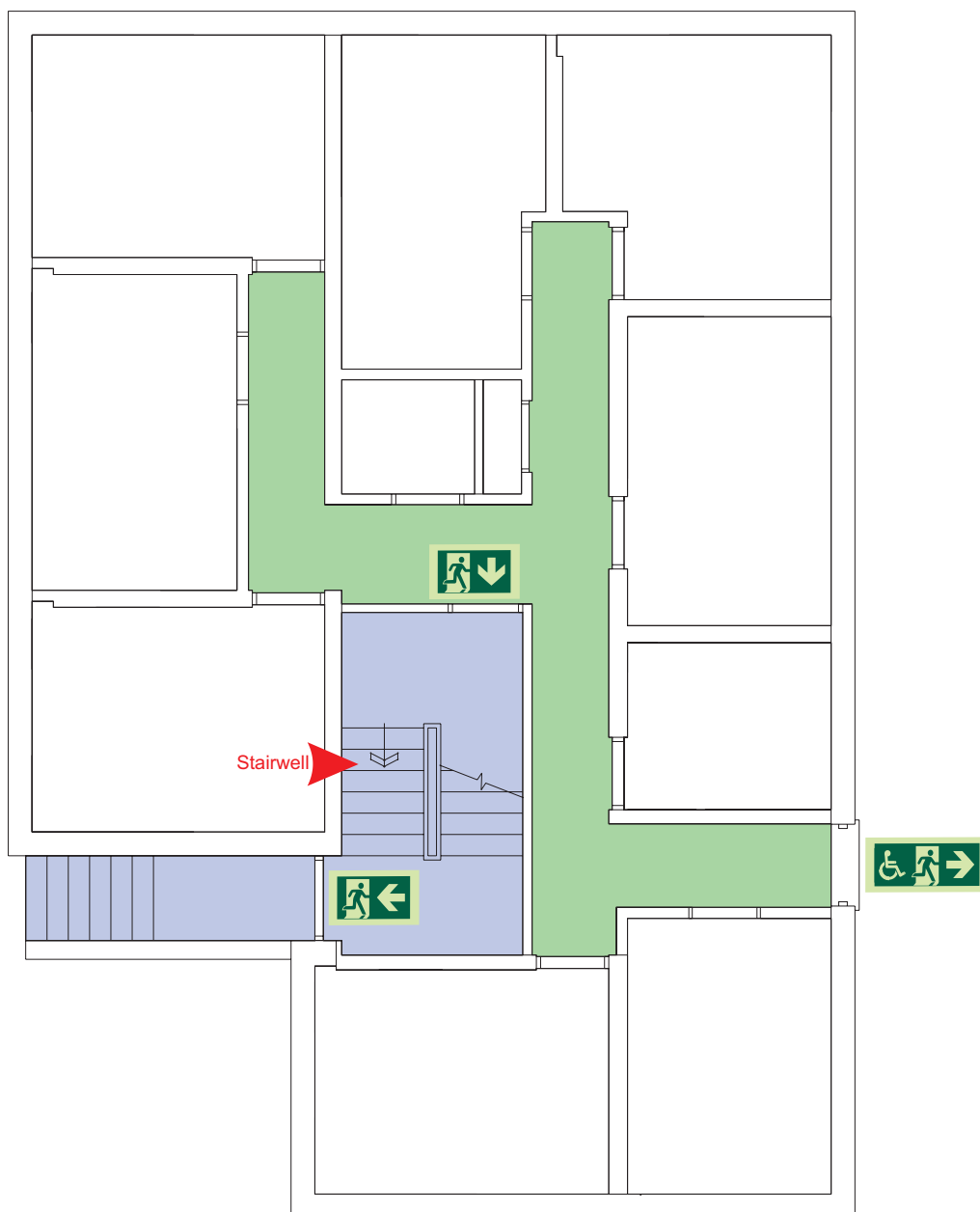
Fire Assembly Point 23

Generic Emergency Evacuation Plan

Loughborough
University

Faraday Block J

LAST UPDATED December 2016



Ground



Accessible final exit



Evacuation lift



Safe refuge



Evacuation
coms



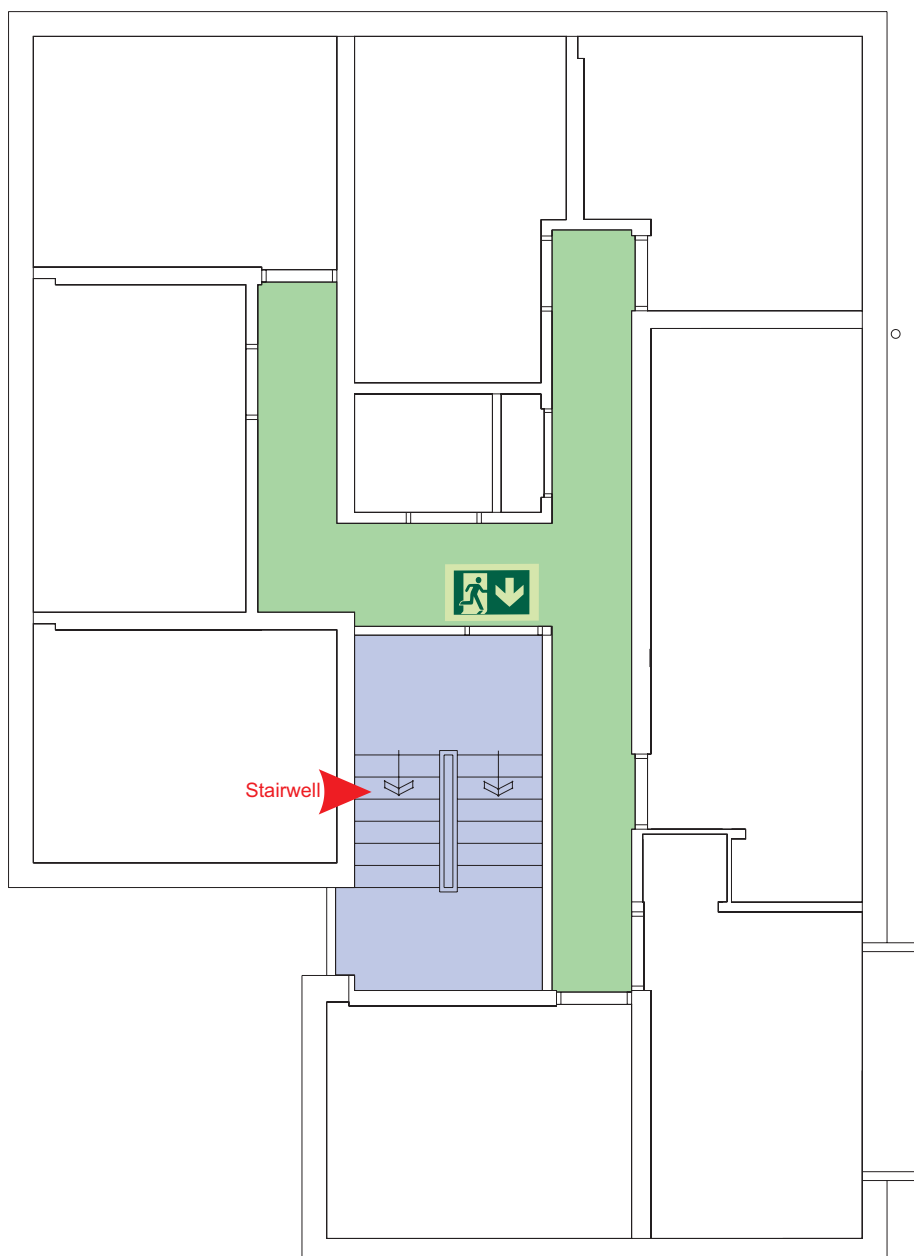
Non
evacuation
lift

Generic Emergency Evacuation Plan

Loughborough
University

Faraday Block J

LAST UPDATED December 2016



First



Accessible final exit



Evacuation lift



Safe refuge



Evacuation
coms



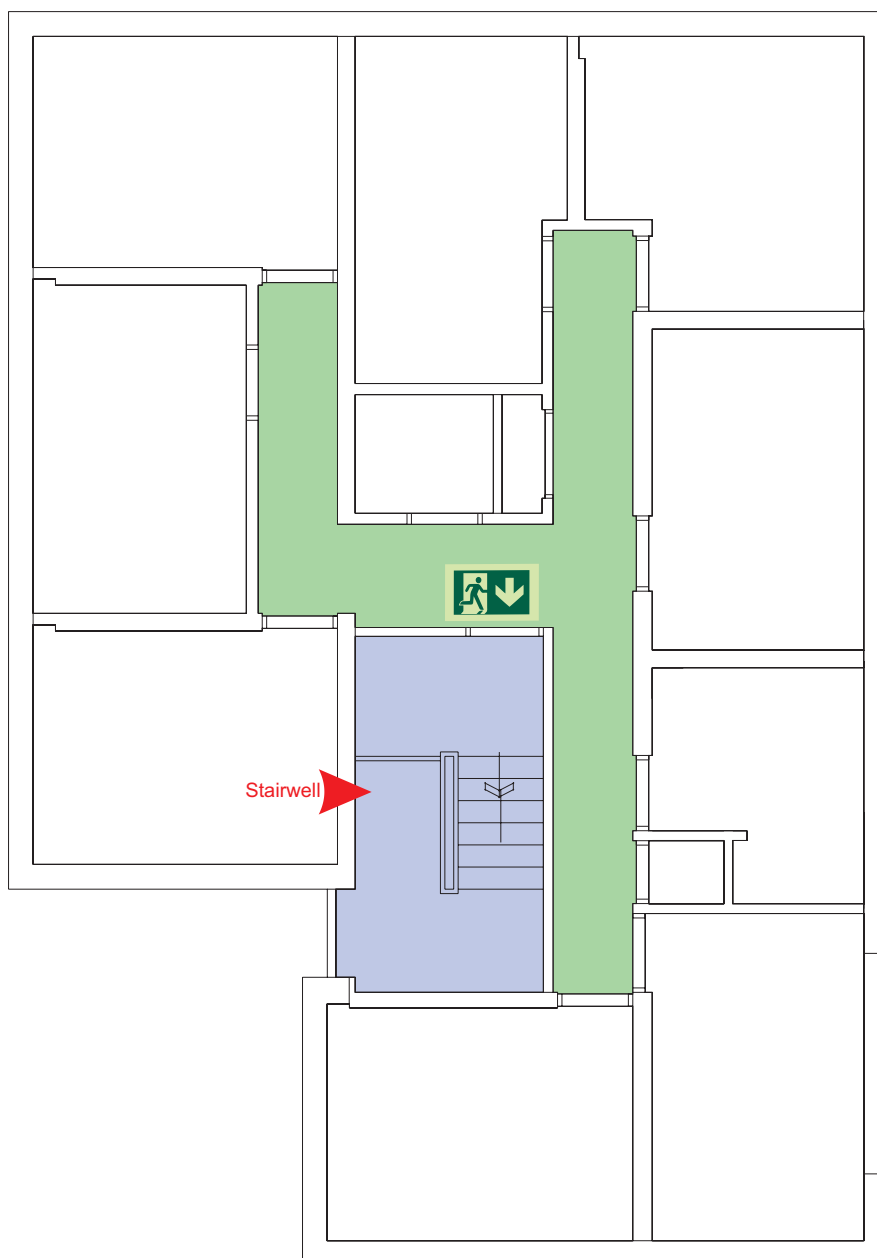
Non
evacuation
lift

Generic Emergency Evacuation Plan

Loughborough
University

Faraday Block J

LAST UPDATED December 2016



Second



Accessible final exit



Evacuation lift



Safe refuge



Evacuation
coms



Non
evacuation
lift

FIRE ESCAPE PLAN

LOUGHBOROUGH UNIVERSITY FIRE INSTRUCTIONS

ANY PERSON DISCOVERING A FIRE



Sound the alarm.
Operate the nearest fire alarm call point.



Telephone Security on the emergency
number 0800 526966.



Do not attack fire with extinguisher
unless trained to do so.

ON HEARING THE ALARM



Evacuate building and go to assembly
point.
Your assembly point is:-

Assembly Point 23

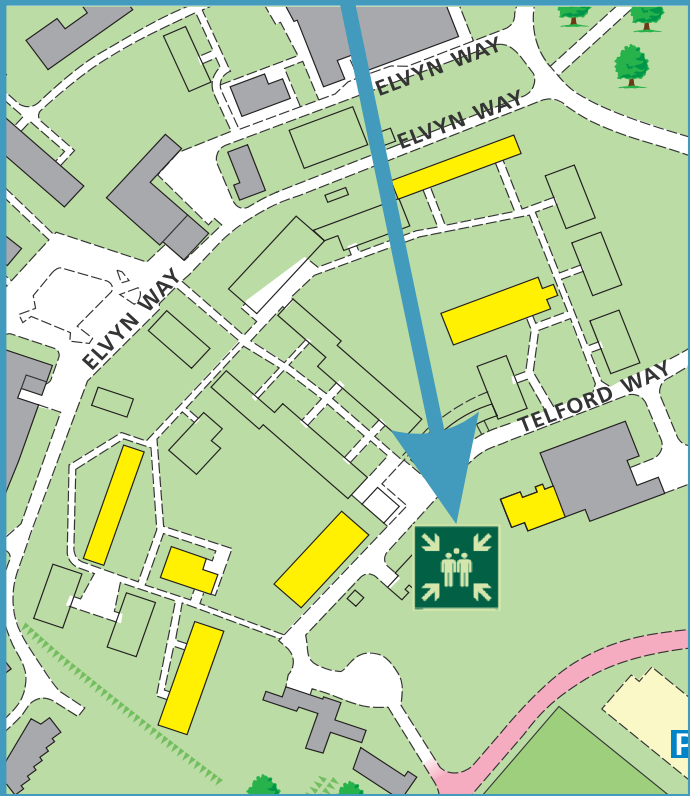


When alarm is given - do not panic, do
not run.
Leave the building following the fire
emergency exit signs.

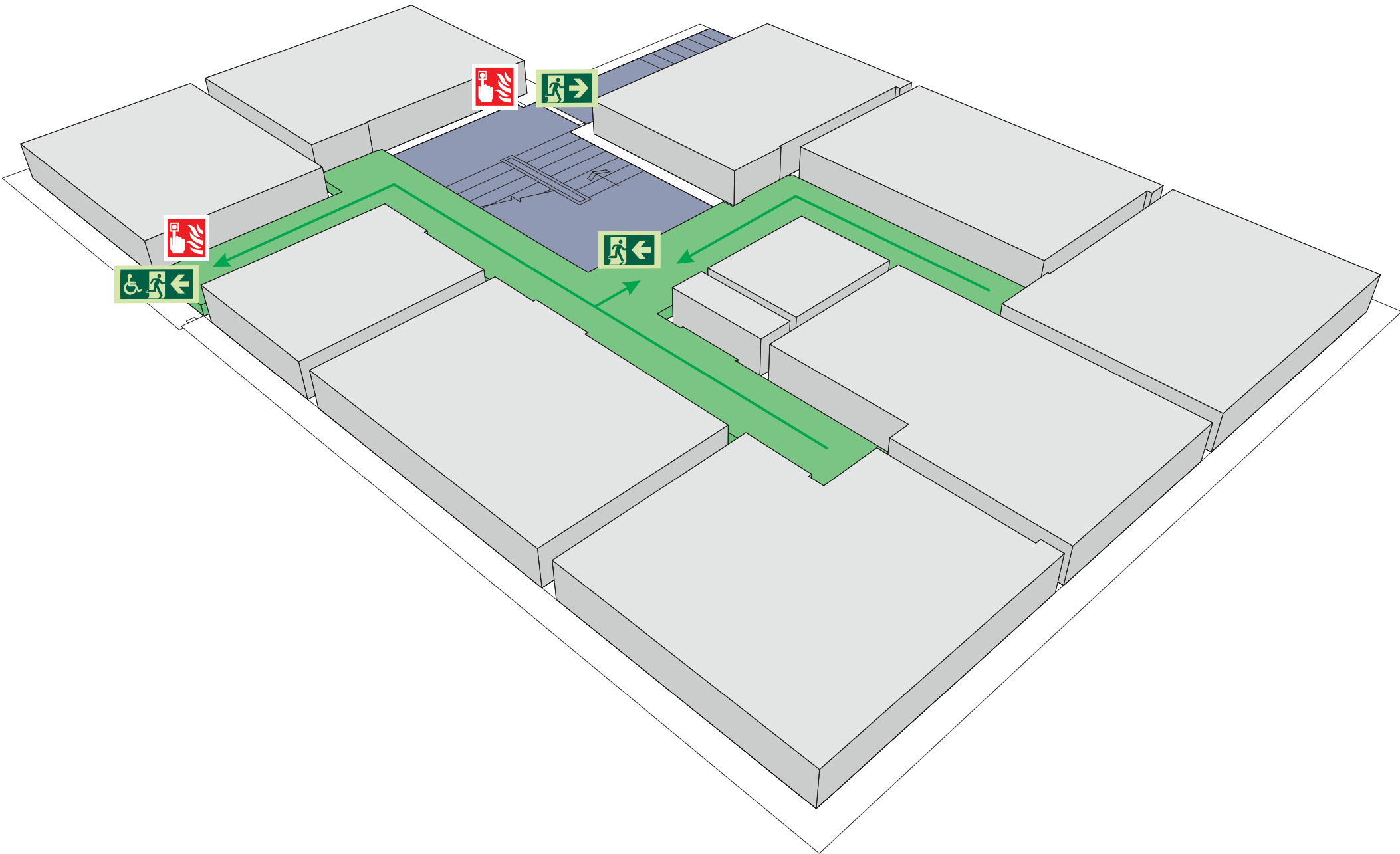


Do not re-enter the building unless told
to do so by the Fire Marshall, Warden or
Fire Service.

ASSEMBLY POINT 23 IS ALLOCATED TO THE
BUILDINGS SHOWN IN YELLOW



Faraday Block J Ground Floor



Fire alarm
Call point



Fire exit



Wheelchair
accessible exit



Fire escape route



Assembly point



Safe refuge



Evac lift



Evac coms



Non evac coms

Loughborough
University

FIRE ESCAPE PLAN

LOUGHBOROUGH UNIVERSITY FIRE INSTRUCTIONS

ANY PERSON DISCOVERING A FIRE



Sound the alarm.
Operate the nearest fire alarm call point.



Telephone Security on the emergency
number 0800 526966.



Do not attack fire with extinguisher
unless trained to do so.

ON HEARING THE ALARM



Evacuate building and go to assembly
point.
Your assembly point is:-

Assembly Point 23

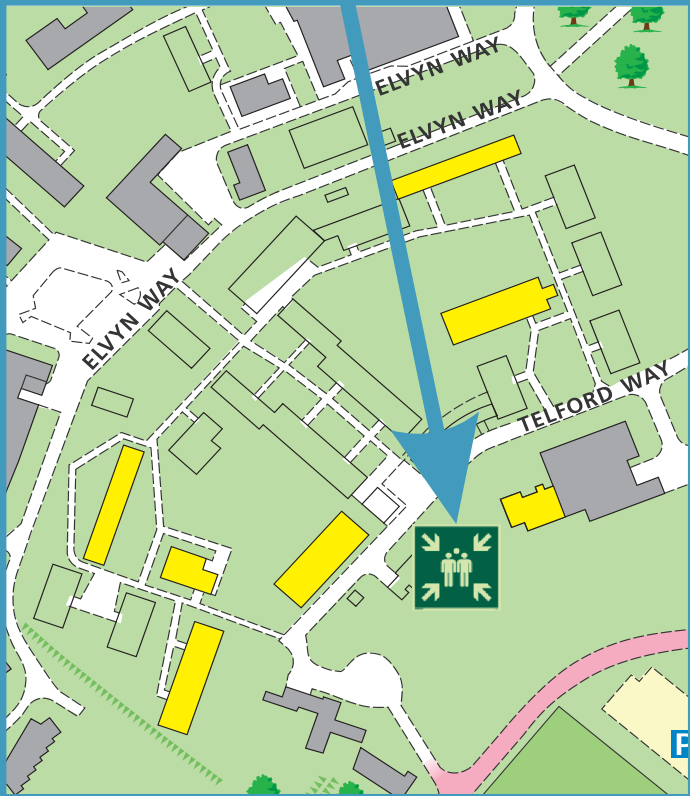


When alarm is given - do not panic, do
not run.
Leave the building following the fire
emergency exit signs.

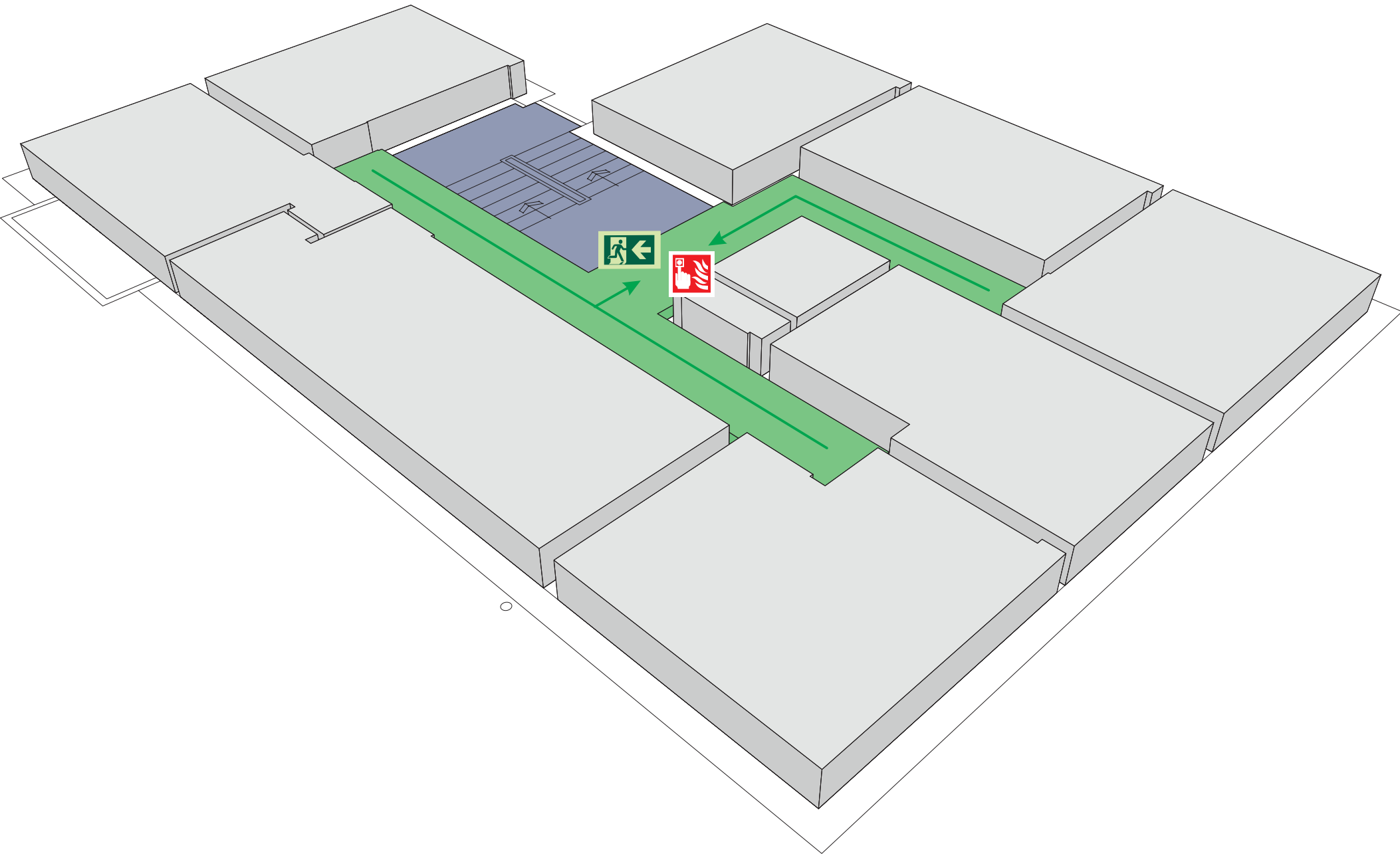


Do not re-enter the building unless told
to do so by the Fire Marshall, Warden or
Fire Service.

ASSEMBLY POINT 23 IS ALLOCATED TO THE
BUILDINGS SHOWN IN YELLOW



Faraday Block J First Floor



Fire alarm
Call point



Fire exit



Wheelchair
accessible exit



Fire escape route



Assembly point



Safe refuge



Evac lift



Evac coms



Non evac coms

Loughborough
University

FIRE ESCAPE PLAN

LOUGHBOROUGH UNIVERSITY FIRE INSTRUCTIONS

ANY PERSON DISCOVERING A FIRE



Sound the alarm.
Operate the nearest fire alarm call point.



Telephone Security on the emergency
number 0800 526966.



Do not attack fire with extinguisher
unless trained to do so.

ON HEARING THE ALARM



Evacuate building and go to assembly
point.
Your assembly point is:-

Assembly Point 23

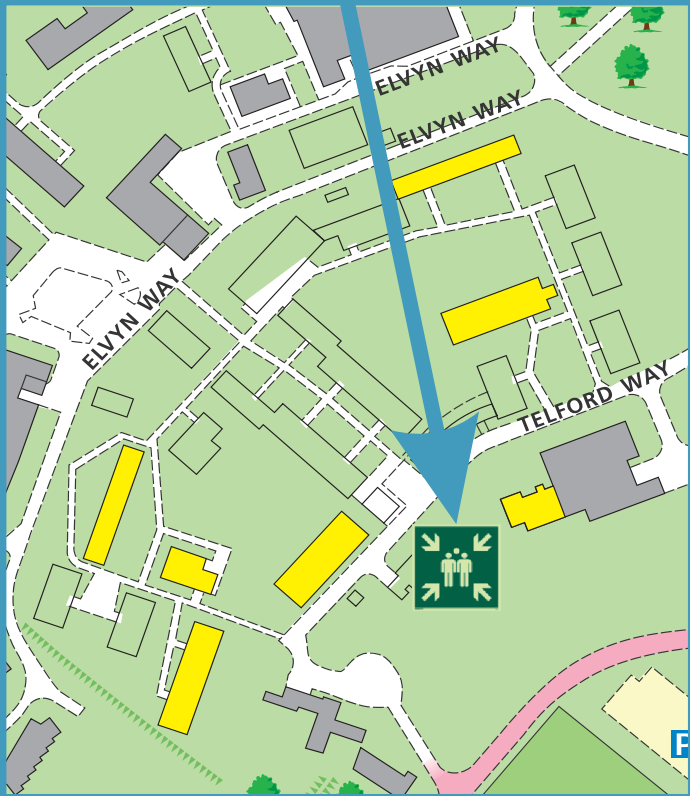


When alarm is given - do not panic, do
not run.
Leave the building following the fire
emergency exit signs.

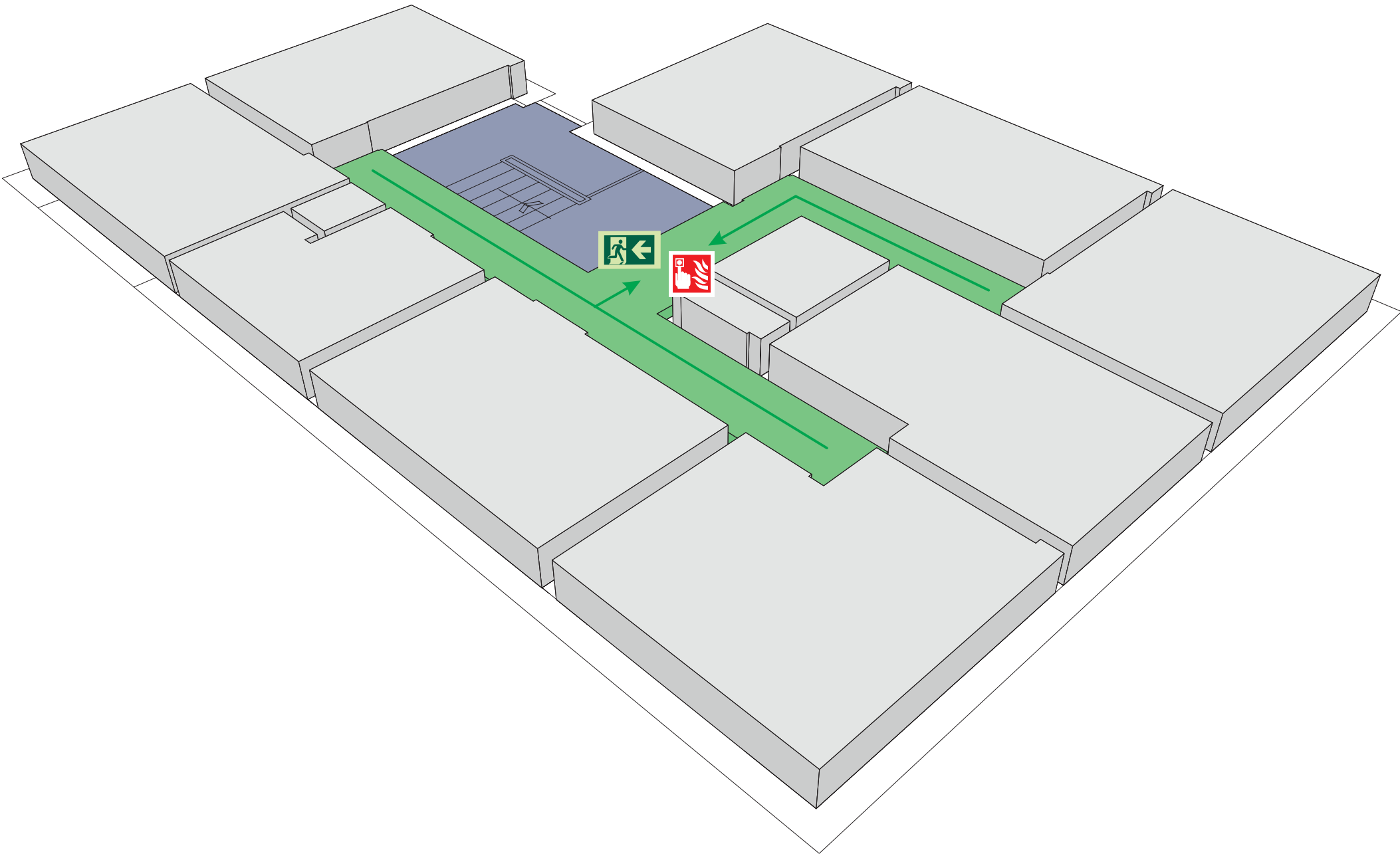


Do not re-enter the building unless told
to do so by the Fire Marshall, Warden or
Fire Service.

ASSEMBLY POINT 23 IS ALLOCATED TO THE
BUILDINGS SHOWN IN YELLOW



Faraday Block J Second Floor



Fire alarm
Call point



Fire exit



Wheelchair
accessible exit



Fire escape route



Assembly point



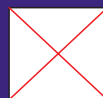
Safe refuge



Evac lift



Evac coms



Non evac coms

Loughborough
University

Faraday Block U

LAST UPDATED December 2016

Purpose:

The purpose of a Generic Emergency Evacuation Plan (GEEP) is to enable visitors to the building with restricted mobility or those who may not be able to evacuate unaided to become familiar with the layout, evacuation procedures, available equipment and communication devices.

If you feel that this document does not provide you with sufficient information or that you require further assistance, please contact the Loughborough University Fire Officer on 01509 222182.

The building:

Faraday Block U building comprises of 3 floors.
Several accessible fire exits are available at ground level.

Action required on hearing the fire alarm:

If able, you should leave the building immediately by the nearest fire exit (see attached floor plan) and report to the assigned assembly point for the building.

Other recommendations:

It is recommended that all visitors to the Faraday Block U building should familiarise themselves with the fire alarm signals and floor layout. Floor plans and evacuation equipment locations have been provided with this document.

Equipment provided:

Accessible fire exits are available on the ground floor of the building.



YOUR ASSEMBLY POINT IS:

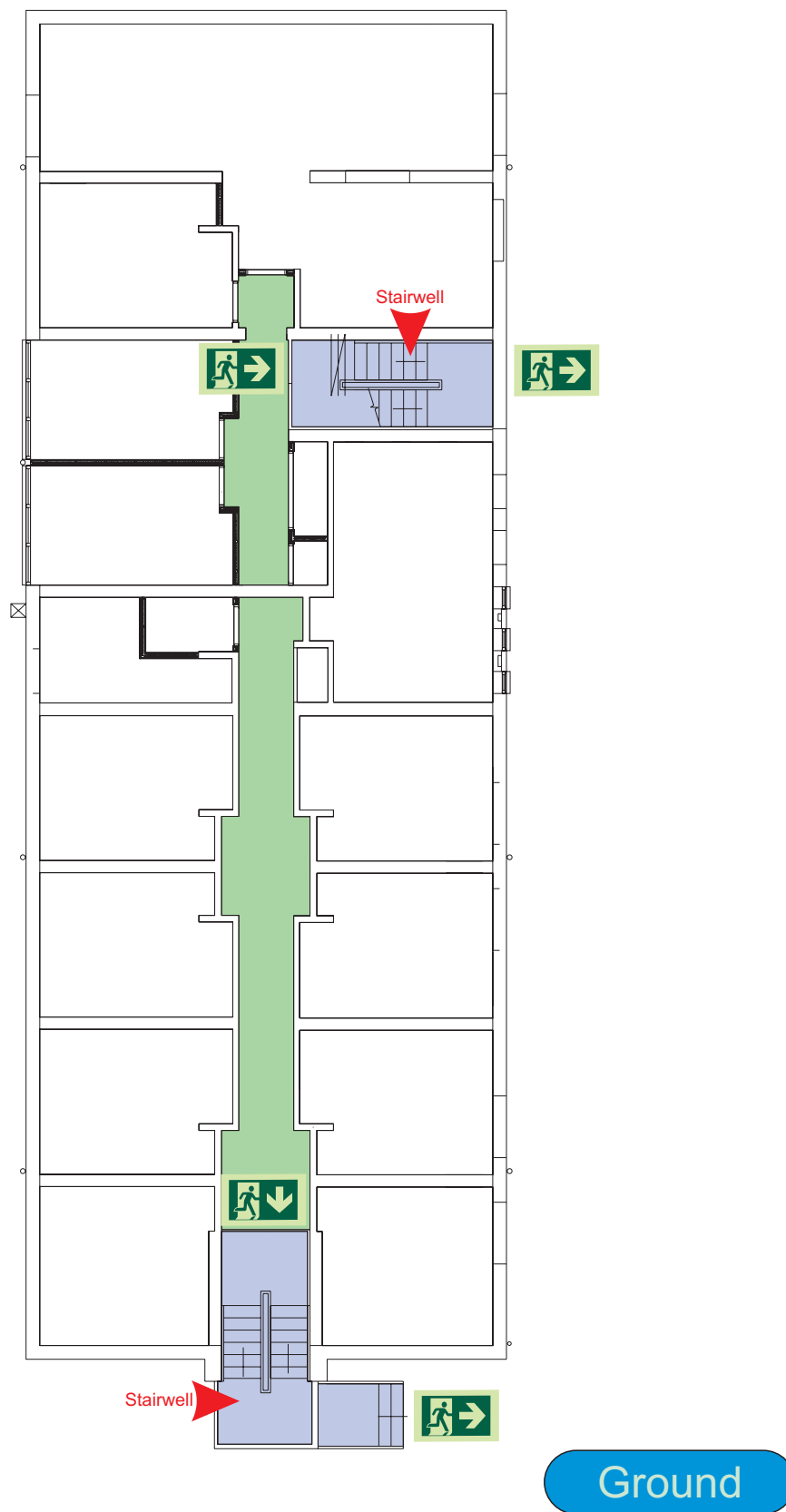
Fire Assembly Point 23

Generic Emergency Evacuation Plan

Loughborough
University

Faraday Block U

LAST UPDATED December 2016



Accessible final exit



Evacuation lift



Safe refuge



Evacuation
coms



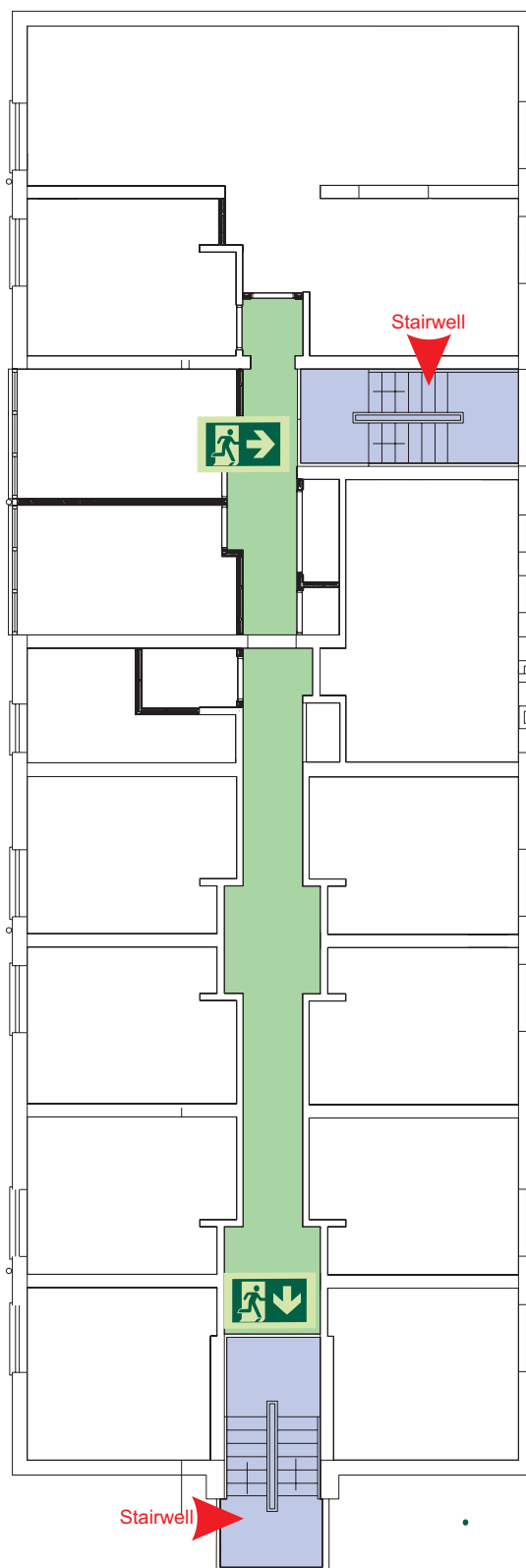
Non
evacuation
lift

Generic Emergency Evacuation Plan

Loughborough
University

Faraday Block U

LAST UPDATED December 2016



First



Accessible final exit



Evacuation lift



Safe refuge



Evacuation
coms



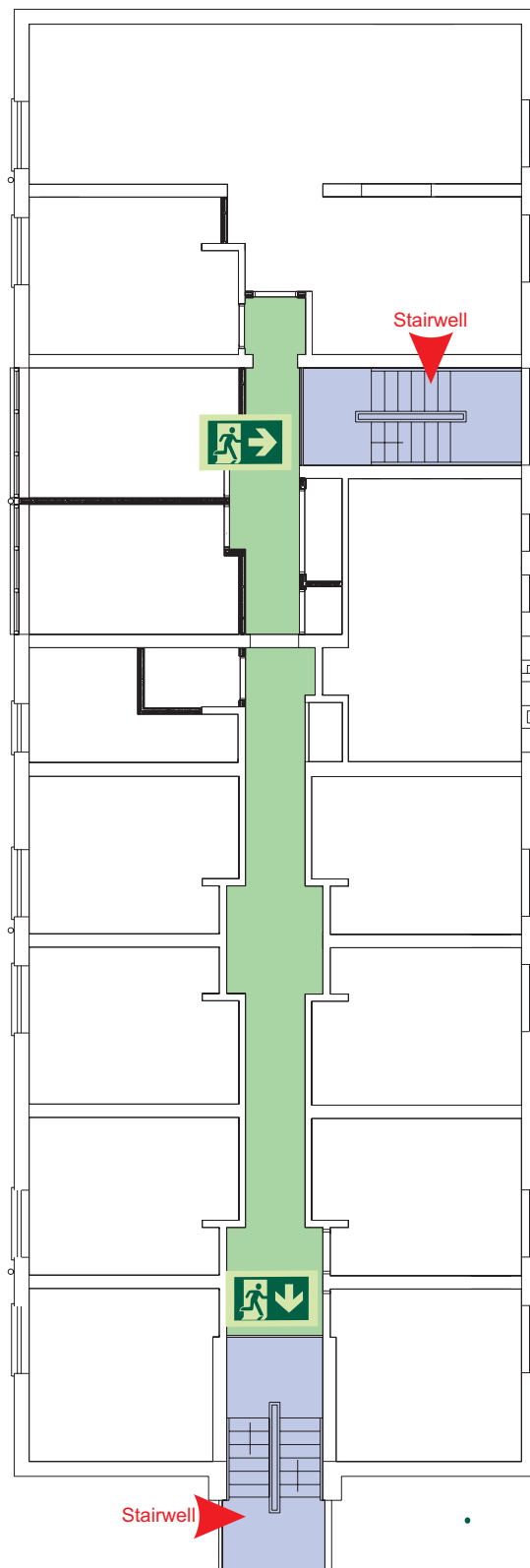
Non
evacuation
lift

Generic Emergency Evacuation Plan

Loughborough
University

Faraday Block U

LAST UPDATED December 2016



Second



Accessible final exit



Evacuation lift



Safe refuge



Evacuation
coms



Non
evacuation
lift

FIRE ESCAPE PLAN

LOUGHBOROUGH UNIVERSITY FIRE INSTRUCTIONS

ANY PERSON DISCOVERING A FIRE



Sound the alarm.
Operate the nearest fire alarm call point.



Telephone Security on the emergency
number 0800 526966.



Do not attack fire with extinguisher
unless trained to do so.

ON HEARING THE ALARM



Evacuate building and go to assembly
point.
Your assembly point is:-

Assembly Point 23

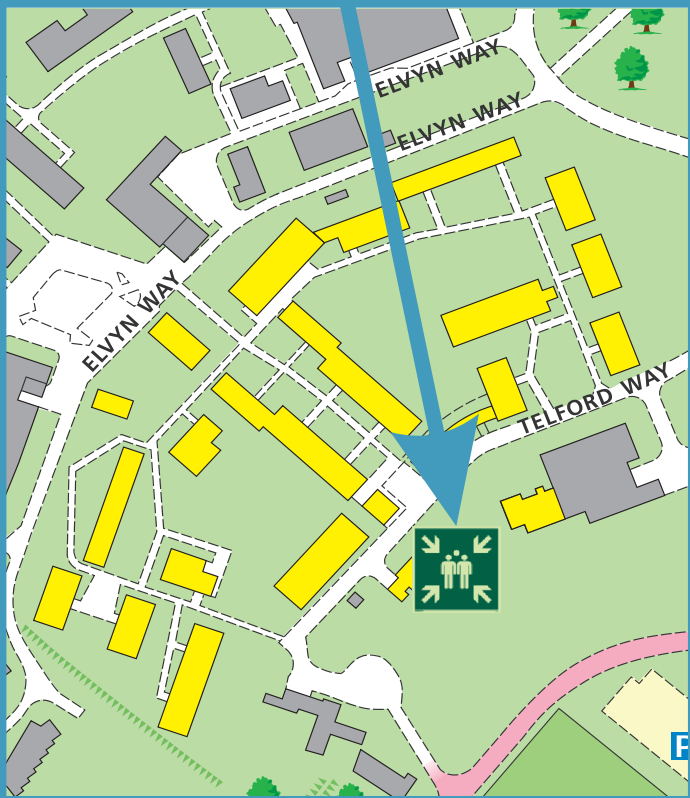


When alarm is given - do not panic, do
not run.
Leave the building following the fire
emergency exit signs.

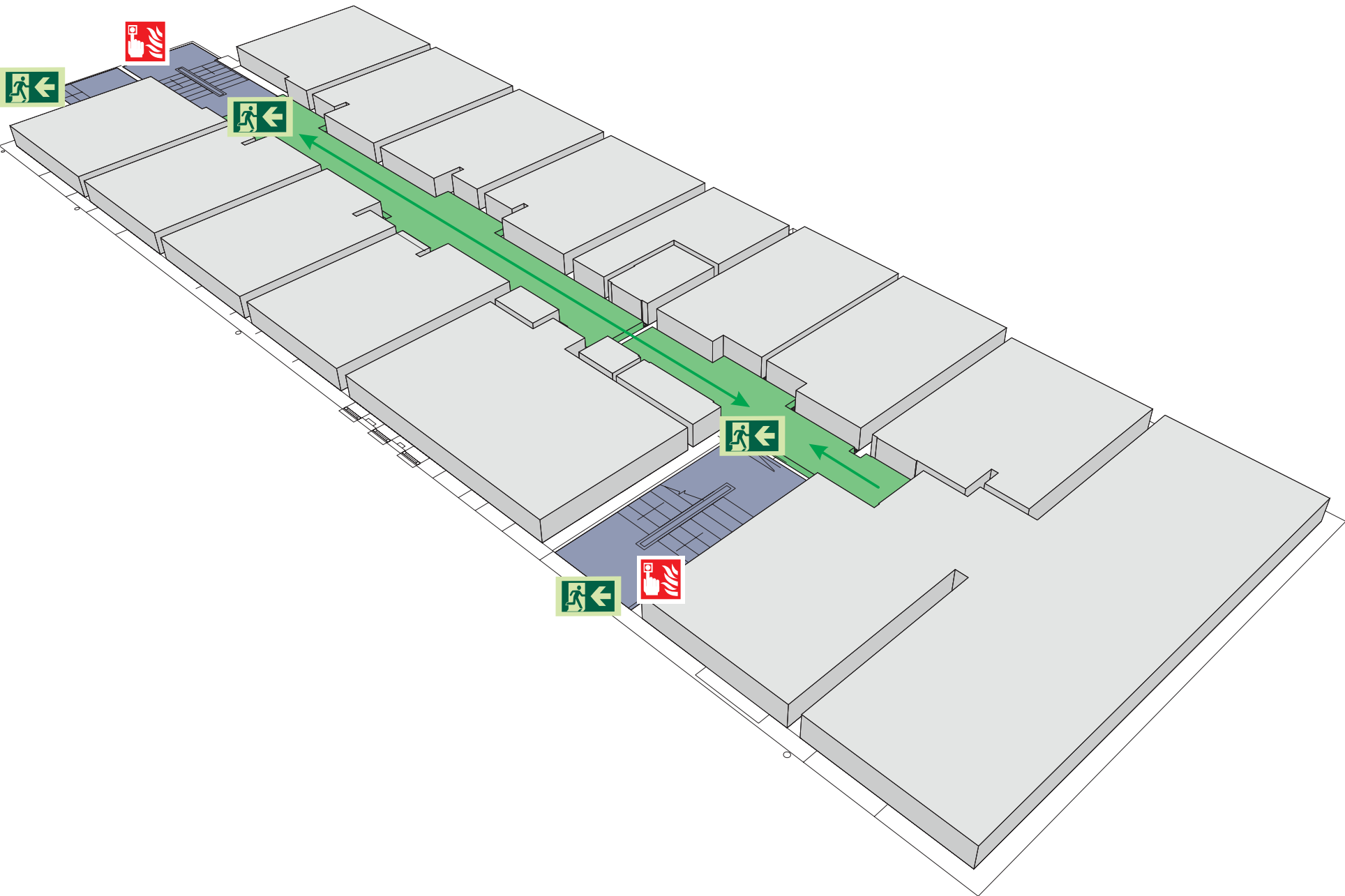


Do not re-enter the building unless told
to do so by the Fire Marshall, Warden or
Fire Service.

ASSEMBLY POINT 23 IS ALLOCATED TO THE
BUILDINGS SHOWN IN YELLOW



Faraday Block U Ground Floor



Fire alarm
Call point



Fire exit



Wheelchair
accessible exit



Fire escape route



Assembly point



Safe refuge



Evac lift



Evac coms



Non evac coms

Loughborough
University

FIRE ESCAPE PLAN

LOUGHBOROUGH UNIVERSITY FIRE INSTRUCTIONS

ANY PERSON DISCOVERING A FIRE



Sound the alarm.
Operate the nearest fire alarm call point.



Telephone Security on the emergency
number 0800 526966.



Do not attack fire with extinguisher
unless trained to do so.

ON HEARING THE ALARM



Evacuate building and go to assembly
point.

Your assembly point is:-

Assembly Point 23

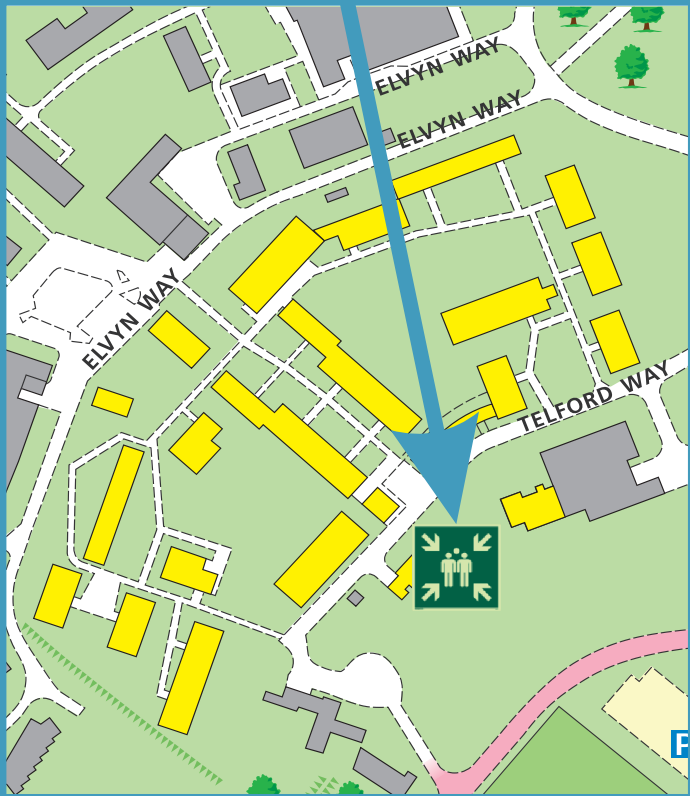


When alarm is given - do not panic, do
not run.
Leave the building following the fire
emergency exit signs.

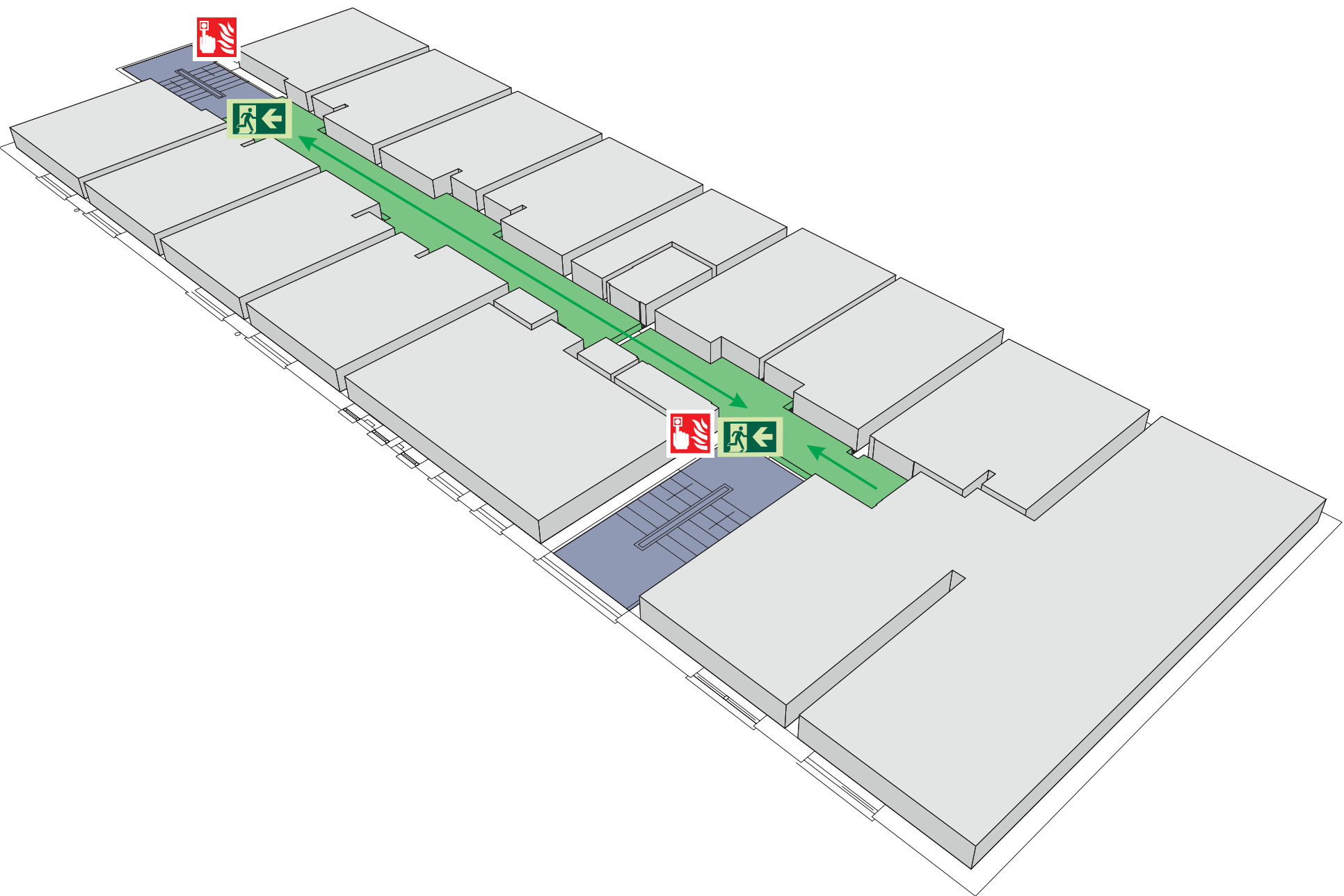


Do not re-enter the building unless told
to do so by the Fire Marshall, Warden or
Fire Service.

ASSEMBLY POINT 23 IS ALLOCATED TO THE
BUILDINGS SHOWN IN YELLOW



Faraday Block U First Floor



Fire alarm
Call point



Fire exit



Wheelchair
accessible exit



Fire escape route



Assembly point



Safe refuge



Evac lift



Evac coms



Non evac coms

Loughborough
University

FIRE ESCAPE PLAN

LOUGHBOROUGH UNIVERSITY FIRE INSTRUCTIONS

ANY PERSON DISCOVERING A FIRE



Sound the alarm.
Operate the nearest fire alarm call point.



Telephone Security on the emergency
number 0800 526966.



Do not attack fire with extinguisher
unless trained to do so.

ON HEARING THE ALARM



Evacuate building and go to assembly
point.
Your assembly point is:-

Assembly Point 23

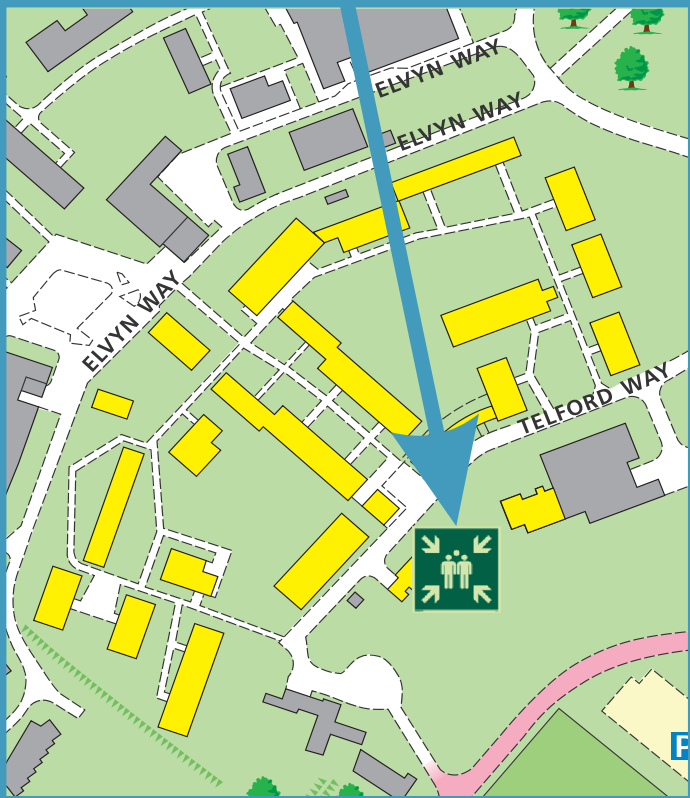


When alarm is given - do not panic, do
not run.
Leave the building following the fire
emergency exit signs.

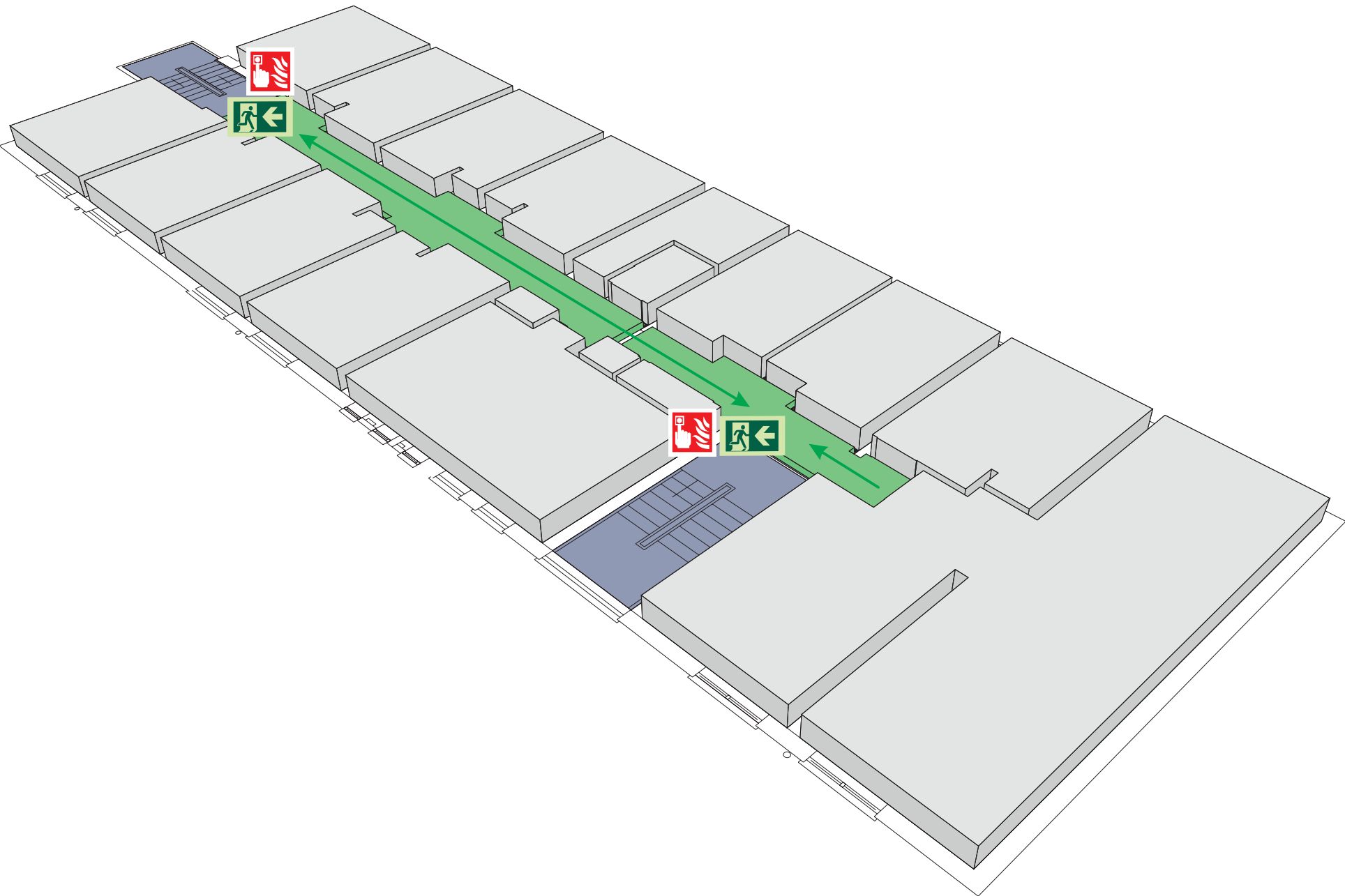


Do not re-enter the building unless told
to do so by the Fire Marshall, Warden or
Fire Service.

ASSEMBLY POINT 23 IS ALLOCATED TO THE
BUILDINGS SHOWN IN YELLOW



Faraday Block U Second Floor



Fire alarm
Call point



Fire exit



Wheelchair
accessible exit



Fire escape route



Assembly point



Safe refuge



Evac lift



Evac coms



Non evac coms

Loughborough
University