

Cayley Blocks 1-12 & 15-19

LAST UPDATED December 2016

Purpose:

The purpose of a Generic Emergency Evacuation Plan (GEEP) is to enable visitors to the building with restricted mobility or those who may not be able to evacuate unaided to become familiar with the layout, evacuation procedures, available equipment and communication devices.

If you feel that this document does not provide you with sufficient information or that you require further assistance, please contact the Loughborough University Fire Officer on 01509 222182.

The building:

Cayley Blocks 1-12 & 15-19 buildings comprise of 2 floors.
A single accessible fire exit is available at ground level.

Action required on hearing the fire alarm:

If able, you should leave the building immediately by the nearest fire exit (see attached floor plan) and report to the assigned assembly point for the building.

Other recommendations:

It is recommended that all visitors to the Cayley Blocks 1-12 & 15-19 buildings should familiarise themselves with the fire alarm signals and floor layout. Floor plans and evacuation equipment locations have been provided with this document.

Equipment provided:

Accessible fire exits are available on the ground floor of the building.



YOUR ASSEMBLY POINT IS:

Fire Assembly Point 23

Cayley Block 5

LAST UPDATED December 2016

Purpose:

The purpose of a Generic Emergency Evacuation Plan (GEEP) is to enable visitors to the building with restricted mobility or those who may not be able to evacuate unaided to become familiar with the layout, evacuation procedures, available equipment and communication devices.

If you feel that this document does not provide you with sufficient information or that you require further assistance, please contact the Loughborough University Fire Officer on 01509 222182.

The building:

Cayley Block 5 building comprises of 3 floors.

Several accessible fire exits are available at ground level.

Action required on hearing the fire alarm:

If able, you should leave the building immediately by the nearest fire exit (see attached floor plan) and report to the assigned assembly point for the building.

Other recommendations:

It is recommended that all visitors to the Cayley Block 5 building should familiarise themselves with the fire alarm signals and floor layout. Floor plans and evacuation equipment locations have been provided with this document.

Equipment provided:

Accessible fire exits are available on the ground floor of the building.



YOUR ASSEMBLY POINT IS:

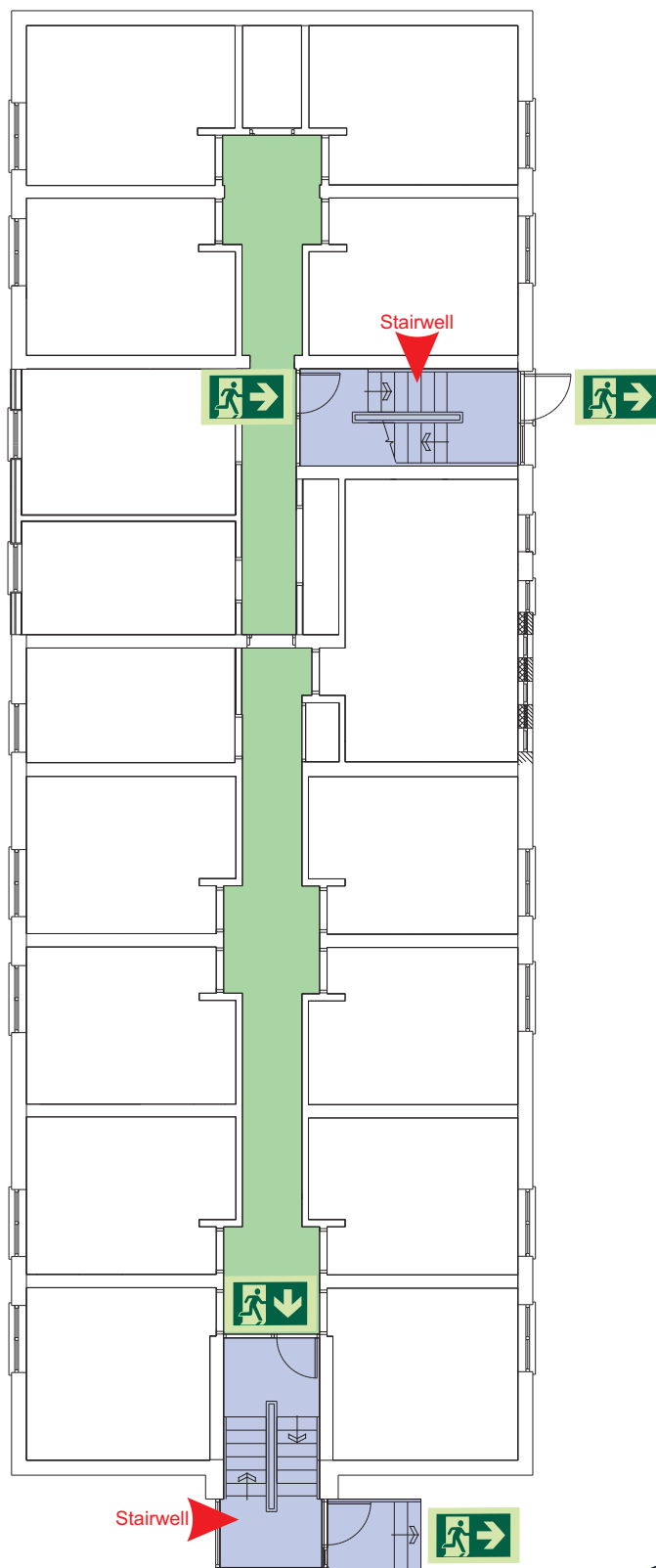
Fire Assembly Point 24

Generic Emergency Evacuation Plan

Loughborough
University

Cayley Block 5

LAST UPDATED December 2016



Ground



Accessible final exit



Evacuation lift



Safe refuge



Evacuation
coms



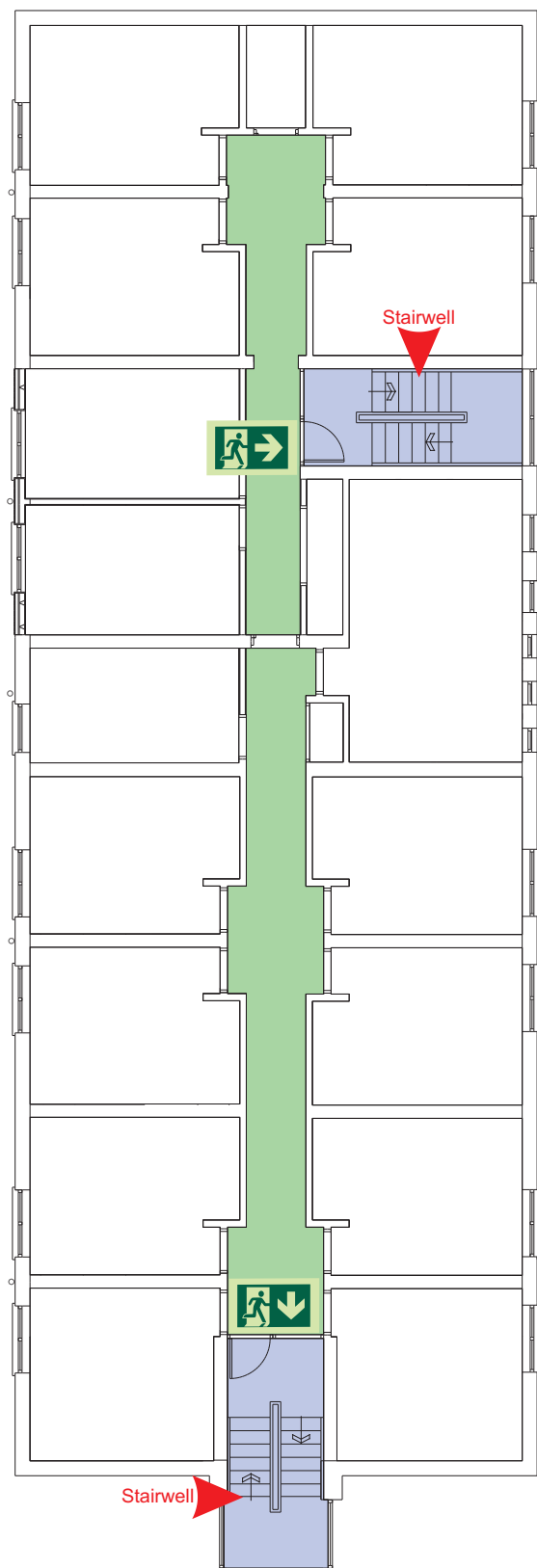
Non
evacuation
lift

Generic Emergency Evacuation Plan

Loughborough
University

Cayley Block 5

LAST UPDATED December 2016



First



Accessible final exit



Evacuation lift



Safe refuge



Evacuation
coms



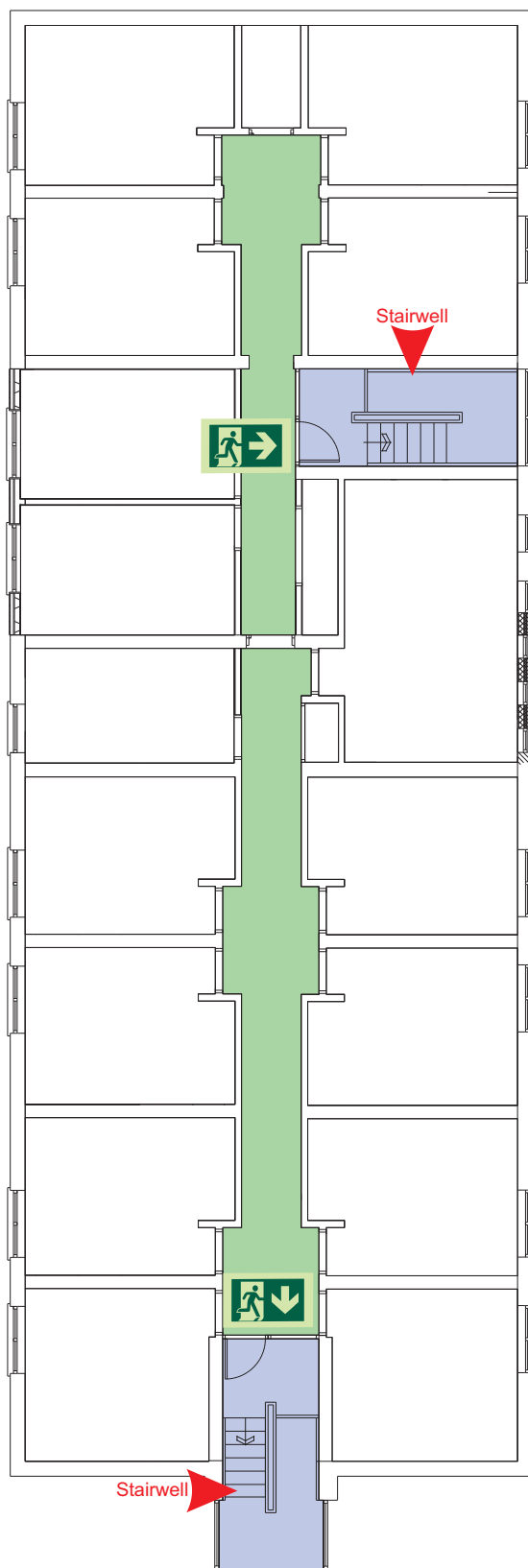
Non
evacuation
lift

Generic Emergency Evacuation Plan

Loughborough
University

Cayley Block 5

LAST UPDATED December 2016



Second



Accessible final exit



Evacuation lift



Safe refuge



Evacuation
coms



Non
evacuation
lift

FIRE ESCAPE PLAN

LOUGHBOROUGH UNIVERSITY FIRE INSTRUCTIONS

ANY PERSON DISCOVERING A FIRE



Sound the alarm.
Operate the nearest fire alarm call point.



Telephone Security on the emergency
number 0800 526966.



Do not attack fire with extinguisher
unless trained to do so.

ON HEARING THE ALARM



Evacuate building and go to assembly
point.

Your assembly point is:-

Assembly Point 24

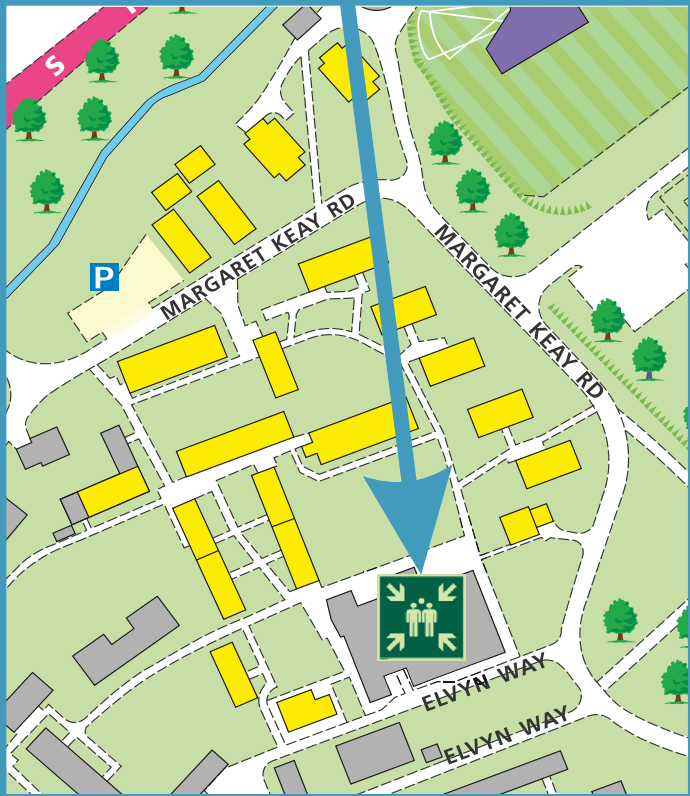


When alarm is given - do not panic, do
not run.
Leave the building following the fire
emergency exit signs.

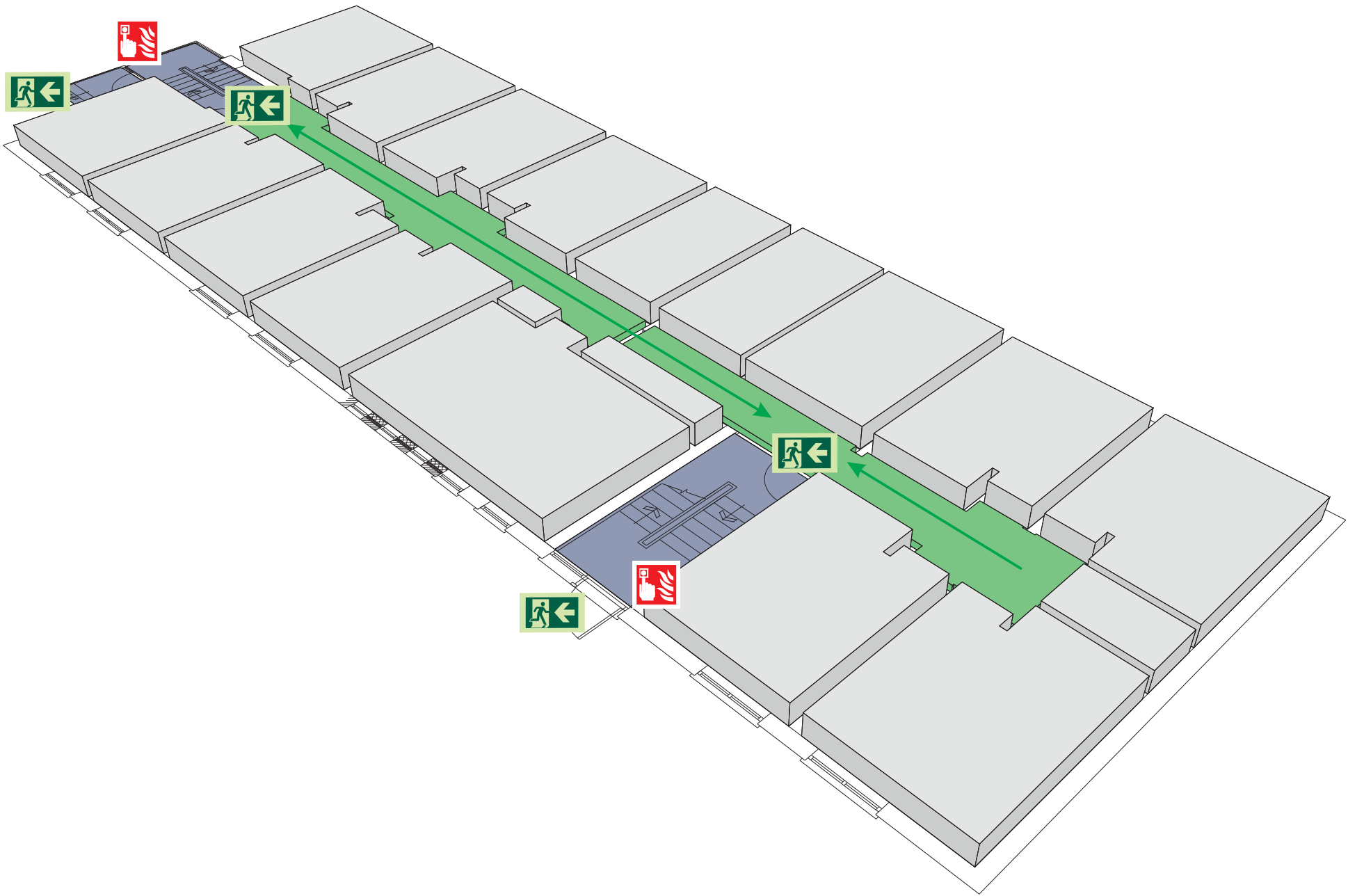


Do not re-enter the building unless told
to do so by the Fire Marshall, Warden or
Fire Service.

ASSEMBLY POINT 24 IS ALLOCATED TO THE
BUILDINGS SHOWN IN YELLOW



Cayley Block 5 Ground Floor



Fire alarm
Call point



Fire exit



Wheelchair
accessible exit



Fire escape route



Assembly point



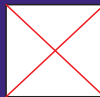
Safe refuge



Evac lift



Evac coms



Non evac coms

Loughborough
University

FIRE ESCAPE PLAN

LOUGHBOROUGH UNIVERSITY FIRE INSTRUCTIONS

ANY PERSON DISCOVERING A FIRE



Sound the alarm.
Operate the nearest fire alarm call point.



Telephone Security on the emergency
number 0800 526966.



Do not attack fire with extinguisher
unless trained to do so.

ON HEARING THE ALARM



Evacuate building and go to assembly
point.
Your assembly point is:-

Assembly Point 24

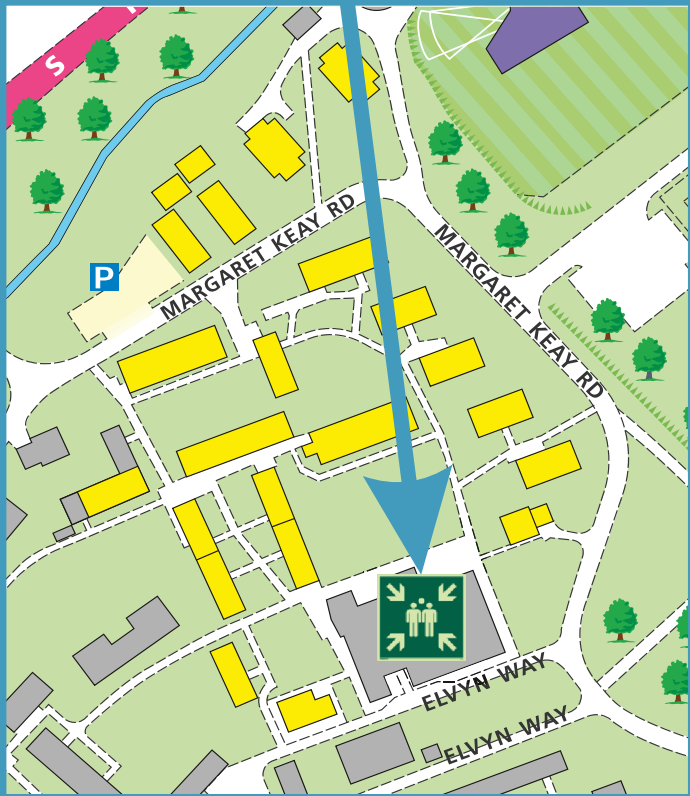


When alarm is given - do not panic, do
not run.
Leave the building following the fire
emergency exit signs.

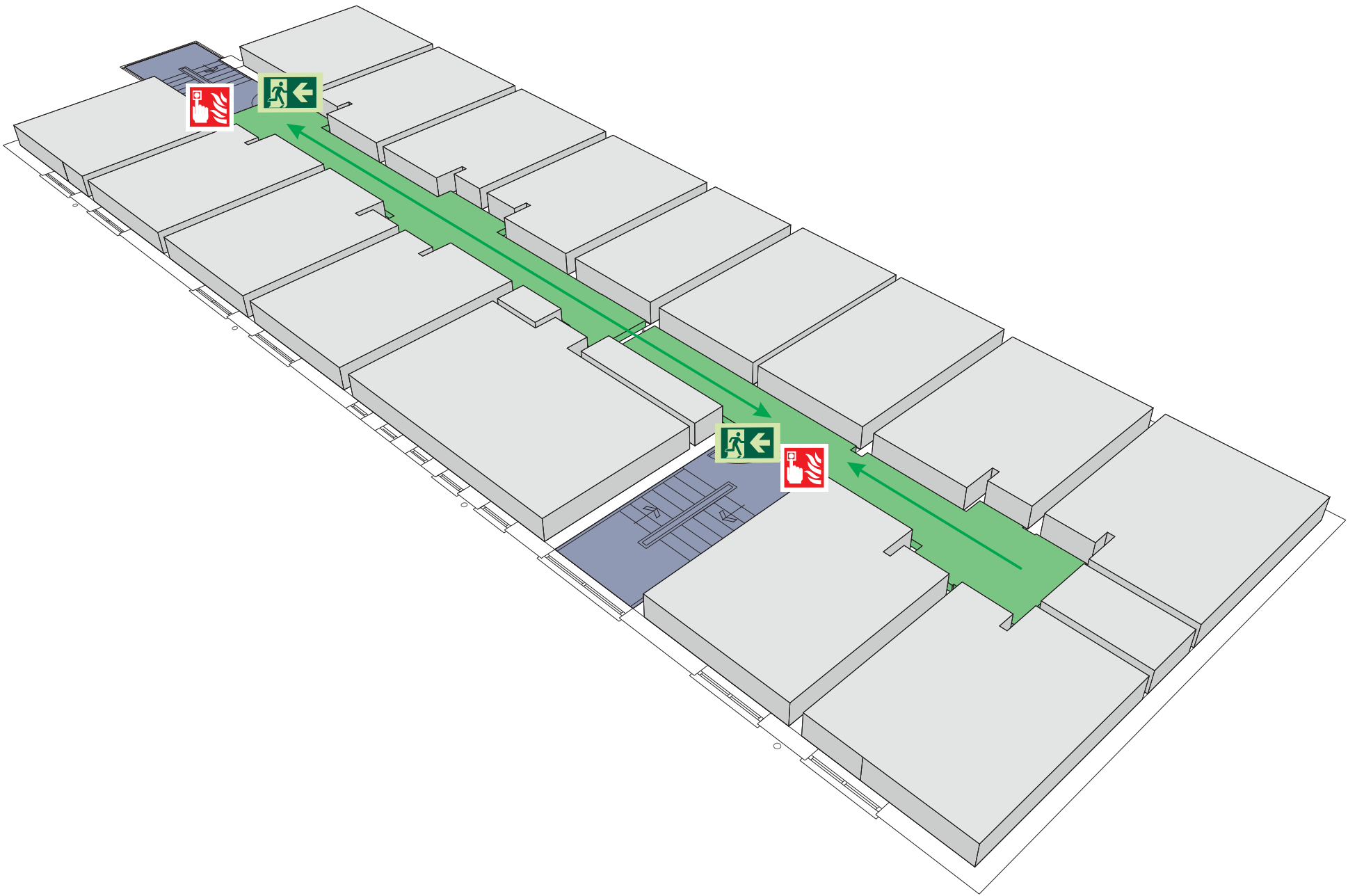


Do not re-enter the building unless told
to do so by the Fire Marshall, Warden or
Fire Service.

ASSEMBLY POINT 24 IS ALLOCATED TO THE
BUILDINGS SHOWN IN YELLOW



Cayley Block 5 First Floor



Fire alarm
Call point



Fire exit



Wheelchair
accessible exit



Fire escape route



Assembly point



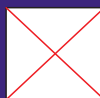
Safe refuge



Evac lift



Evac coms



Non evac coms

Loughborough
University

FIRE ESCAPE PLAN

LOUGHBOROUGH UNIVERSITY FIRE INSTRUCTIONS

ANY PERSON DISCOVERING A FIRE



Sound the alarm.
Operate the nearest fire alarm call point.



Telephone Security on the emergency
number 0800 526966.



Do not attack fire with extinguisher
unless trained to do so.

ON HEARING THE ALARM



Evacuate building and go to assembly
point.
Your assembly point is:-

Assembly Point 24

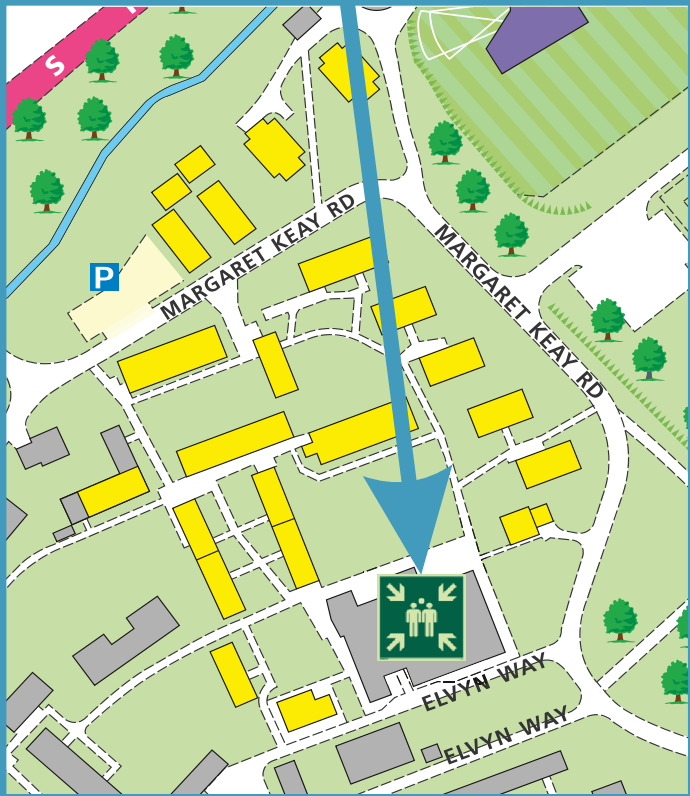


When alarm is given - do not panic, do
not run.
Leave the building following the fire
emergency exit signs.

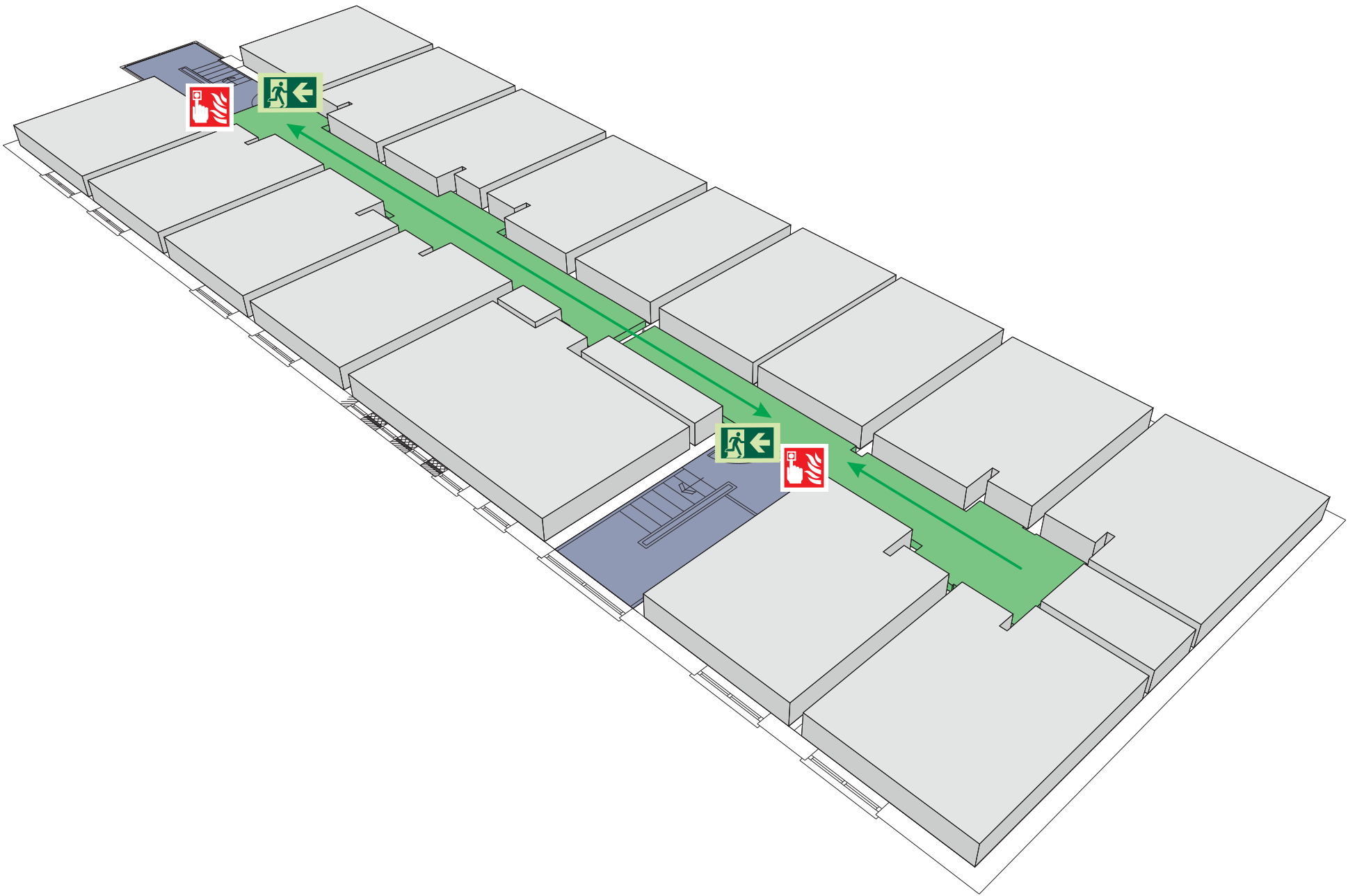


Do not re-enter the building unless told
to do so by the Fire Marshall, Warden or
Fire Service.

ASSEMBLY POINT 24 IS ALLOCATED TO THE
BUILDINGS SHOWN IN YELLOW



Cayley Block 5 Second Floor



Fire alarm
Call point



Fire exit



Wheelchair
accessible exit



Fire escape route



Assembly point



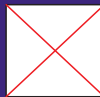
Safe refuge



Evac lift



Evac coms



Non evac coms

Loughborough
University

Cayley Block 14

LAST UPDATED December 2016

Purpose:

The purpose of a Generic Emergency Evacuation Plan (GEEP) is to enable visitors to the building with restricted mobility or those who may not be able to evacuate unaided to become familiar with the layout, evacuation procedures, available equipment and communication devices.

If you feel that this document does not provide you with sufficient information or that you require further assistance, please contact the Loughborough University Fire Officer on 01509 222182.

The building:

Cayley Block 14 building comprises of 3 floors.

Several accessible fire exits are available at ground level.

Action required on hearing the fire alarm:

If able, you should leave the building immediately by the nearest fire exit (see attached floor plan) and report to the assigned assembly point for the building.

Other recommendations:

It is recommended that all visitors to the Cayley Block 14 Building should familiarise themselves with the fire alarm signals and floor layout. Floor plans and evacuation equipment locations have been provided with this document.

Equipment provided:

Accessible fire exits are available on the ground floor of the building.



YOUR ASSEMBLY POINT IS:

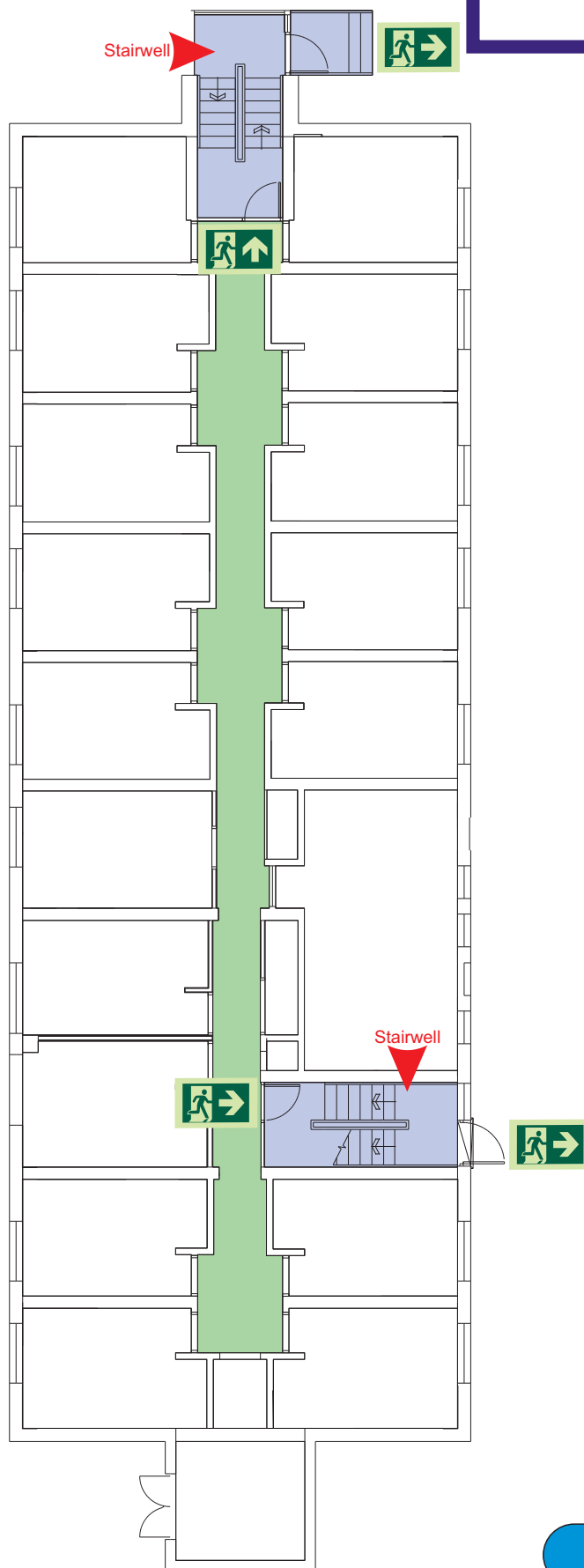
Fire Assembly Point 24

Generic Emergency Evacuation Plan

Loughborough
University

Cayley Block 14

LAST UPDATED December 2016



Ground



Accessible final exit



Evacuation lift



Safe refuge



Evacuation
coms



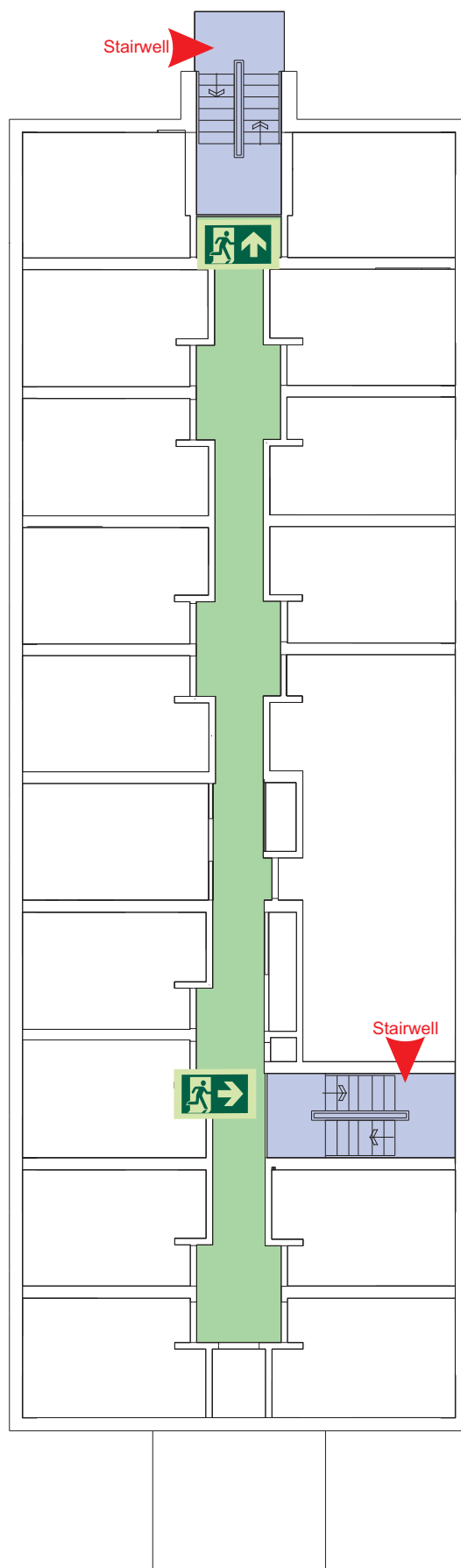
Non
evacuation
lift

Generic Emergency Evacuation Plan

Loughborough
University

Cayley Block 14

LAST UPDATED December 2016



First



Accessible final exit



Evacuation lift



Safe refuge



Evacuation
coms



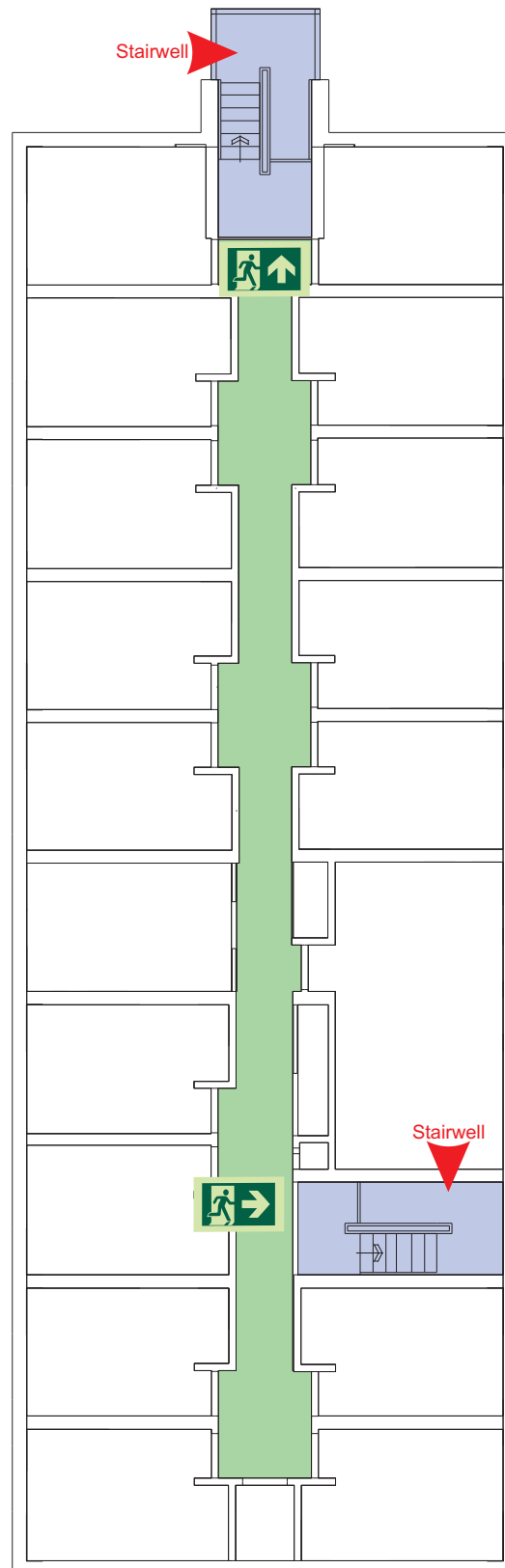
Non
evacuation
lift

Generic Emergency Evacuation Plan

Loughborough
University

Cayley Block 14

LAST UPDATED December 2016



Second



Accessible final exit



Evacuation lift



Safe refuge



Evacuation
coms



Non
evacuation
lift

FIRE ESCAPE PLAN

LOUGHBOROUGH UNIVERSITY FIRE INSTRUCTIONS

ANY PERSON DISCOVERING A FIRE



Sound the alarm.
Operate the nearest fire alarm call point.



Telephone Security on the emergency
number 0800 526966.



Do not attack fire with extinguisher
unless trained to do so.

ON HEARING THE ALARM



Evacuate building and go to assembly
point.

Your assembly point is:-

Assembly Point 24

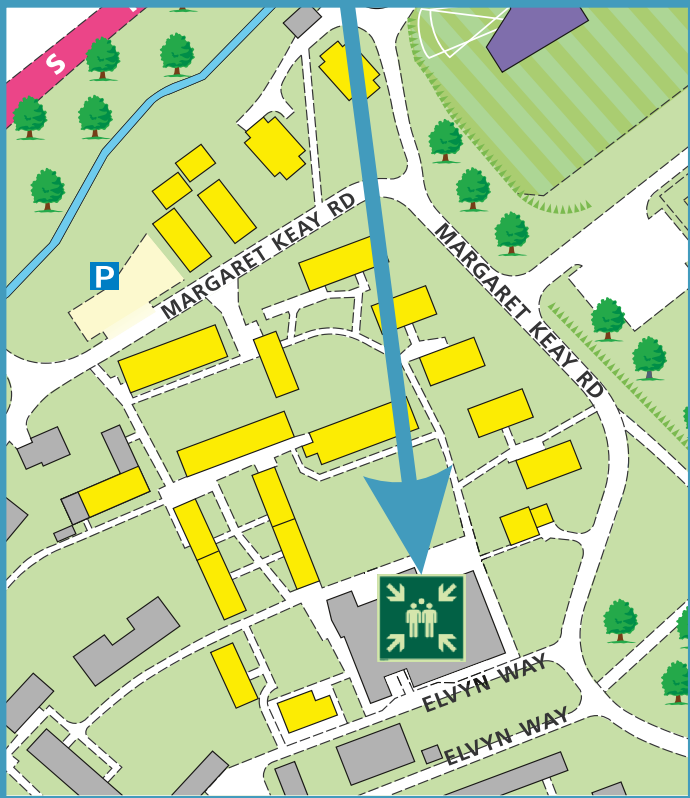


When alarm is given - do not panic, do
not run.
Leave the building following the fire
emergency exit signs.

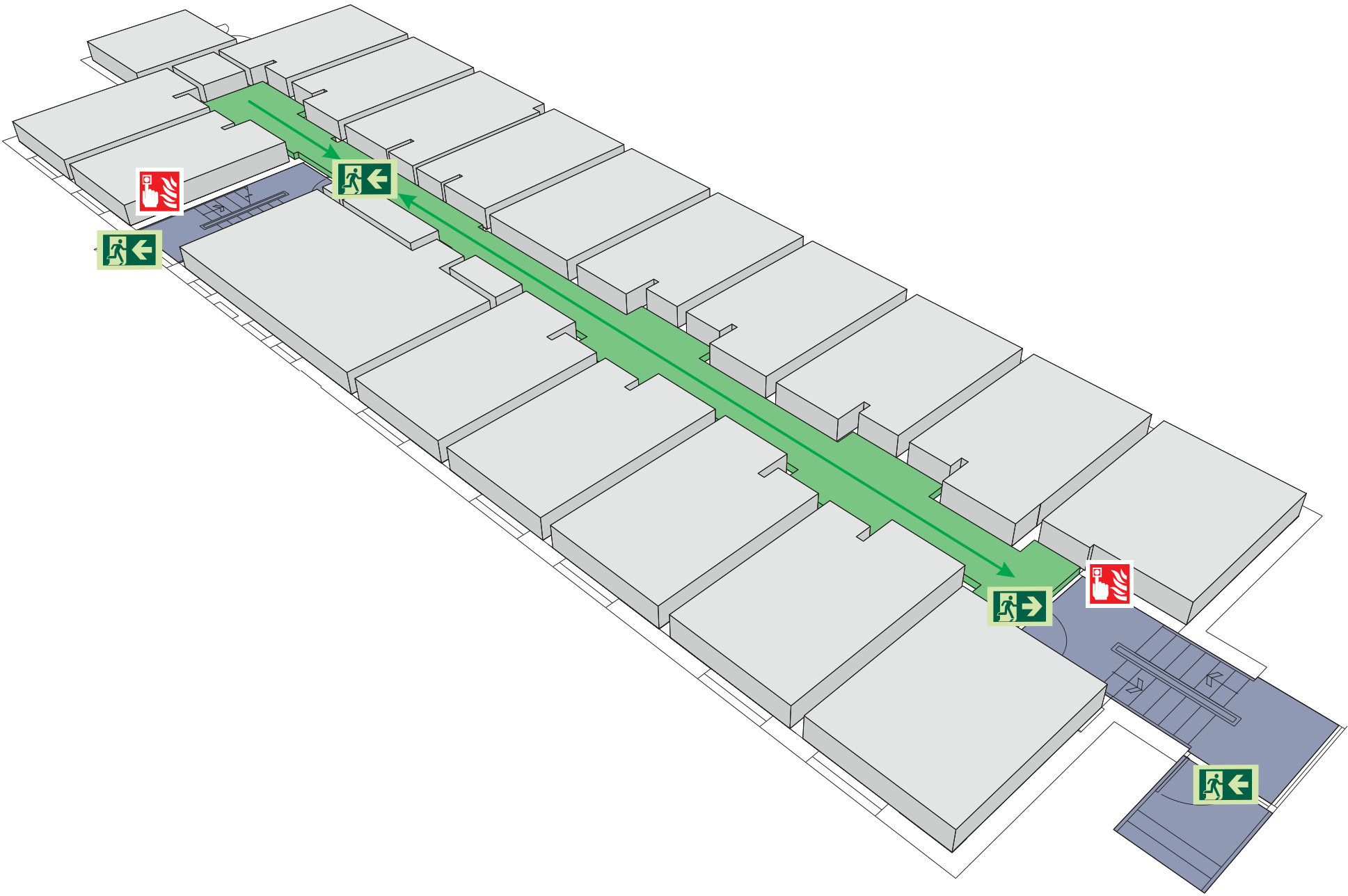


Do not re-enter the building unless told
to do so by the Fire Marshall, Warden or
Fire Service.

ASSEMBLY POINT 24 IS ALLOCATED TO THE
BUILDINGS SHOWN IN YELLOW



Cayley Block 14 Ground Floor



Fire alarm
Call point



Fire exit



Wheelchair
accessible exit



Fire escape route



Assembly point



Safe refuge



Evac lift



Evac coms



Non evac coms

Loughborough
University

FIRE ESCAPE PLAN

LOUGHBOROUGH UNIVERSITY FIRE INSTRUCTIONS

ANY PERSON DISCOVERING A FIRE



Sound the alarm.
Operate the nearest fire alarm call point.



Telephone Security on the emergency
number 0800 526966.



Do not attack fire with extinguisher
unless trained to do so.

ON HEARING THE ALARM



Evacuate building and go to assembly
point.
Your assembly point is:-

Assembly Point 24

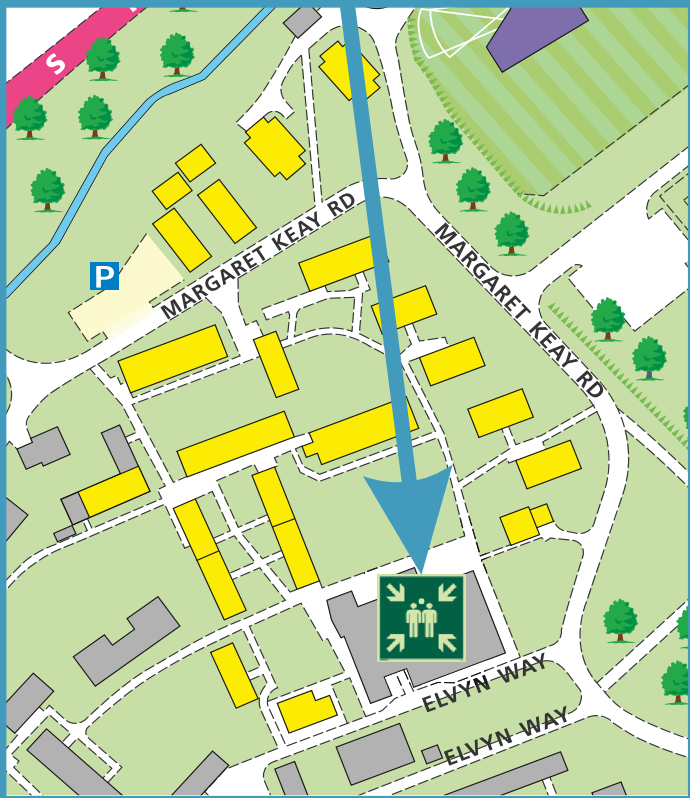


When alarm is given - do not panic, do
not run.
Leave the building following the fire
emergency exit signs.

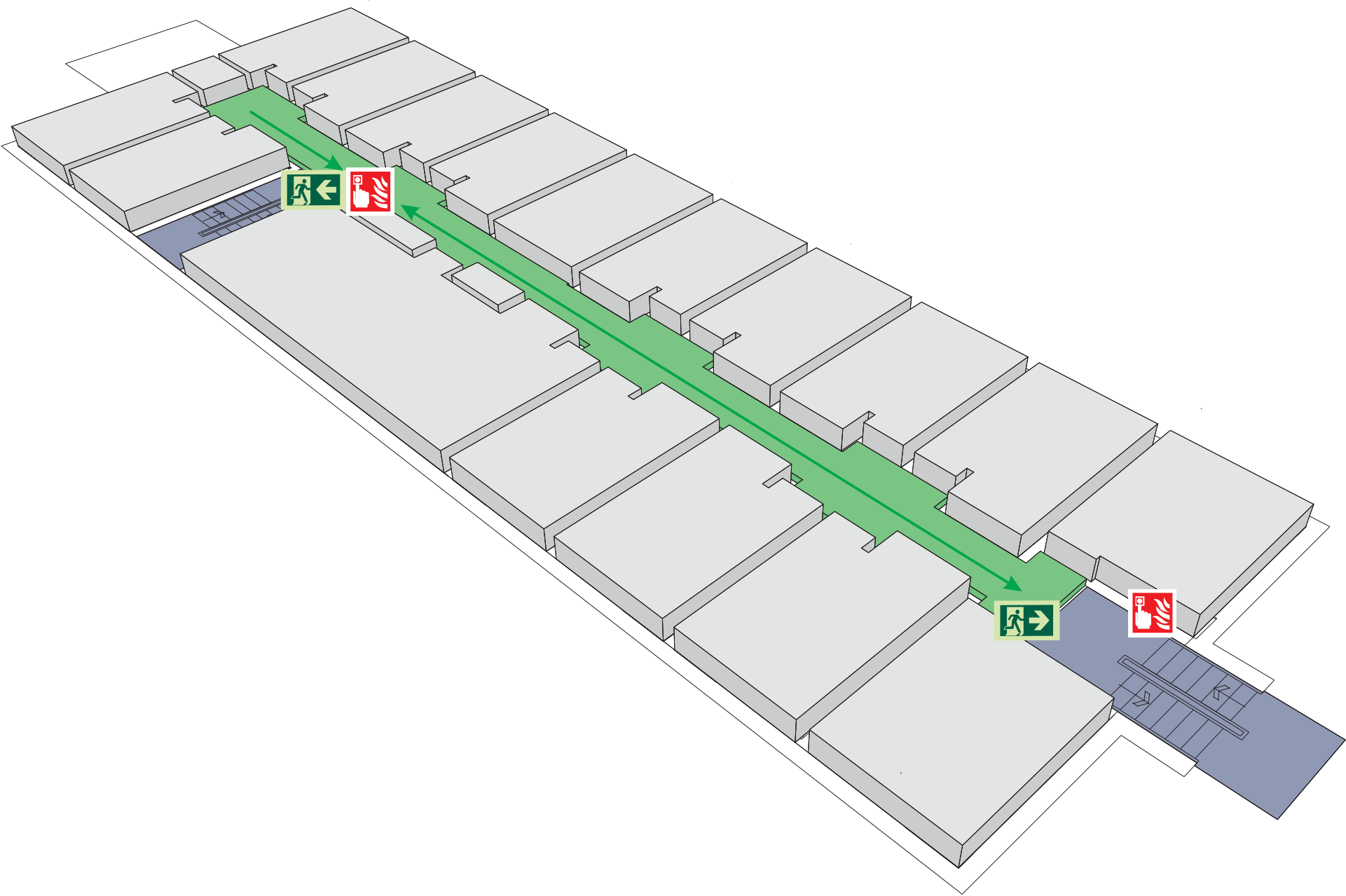


Do not re-enter the building unless told
to do so by the Fire Marshall, Warden or
Fire Service.

ASSEMBLY POINT 24 IS ALLOCATED TO THE
BUILDINGS SHOWN IN YELLOW



Cayley Block 14 First Floor



Fire alarm
Call point



Fire exit



Wheelchair
accessible exit



Fire escape route



Assembly point



Safe refuge



Evac lift



Evac coms



Non evac coms

Loughborough
University

FIRE ESCAPE PLAN

LOUGHBOROUGH UNIVERSITY FIRE INSTRUCTIONS

ANY PERSON DISCOVERING A FIRE



Sound the alarm.
Operate the nearest fire alarm call point.



Telephone Security on the emergency
number 0800 526966.



Do not attack fire with extinguisher
unless trained to do so.

ON HEARING THE ALARM



Evacuate building and go to assembly
point.
Your assembly point is:-

Assembly Point 24

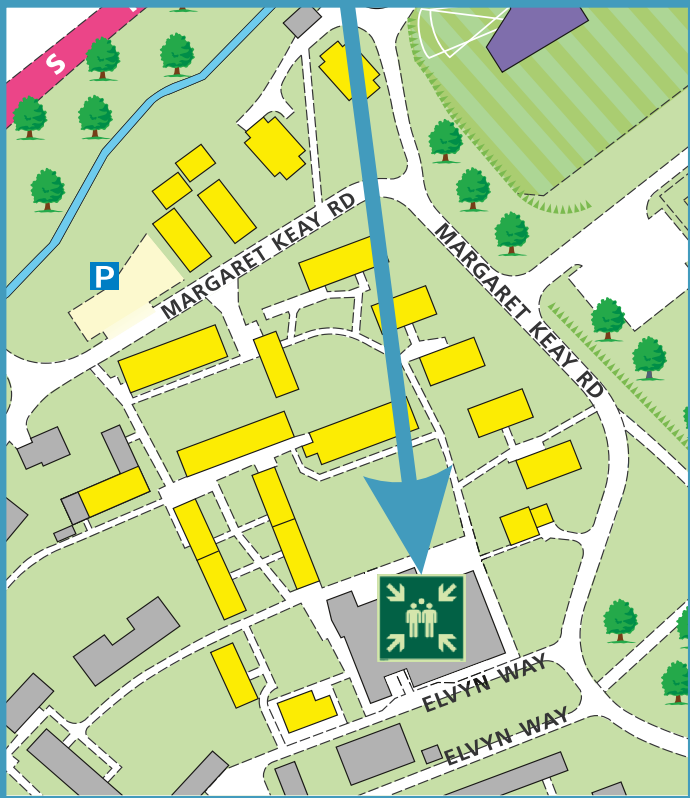


When alarm is given - do not panic, do
not run.
Leave the building following the fire
emergency exit signs.

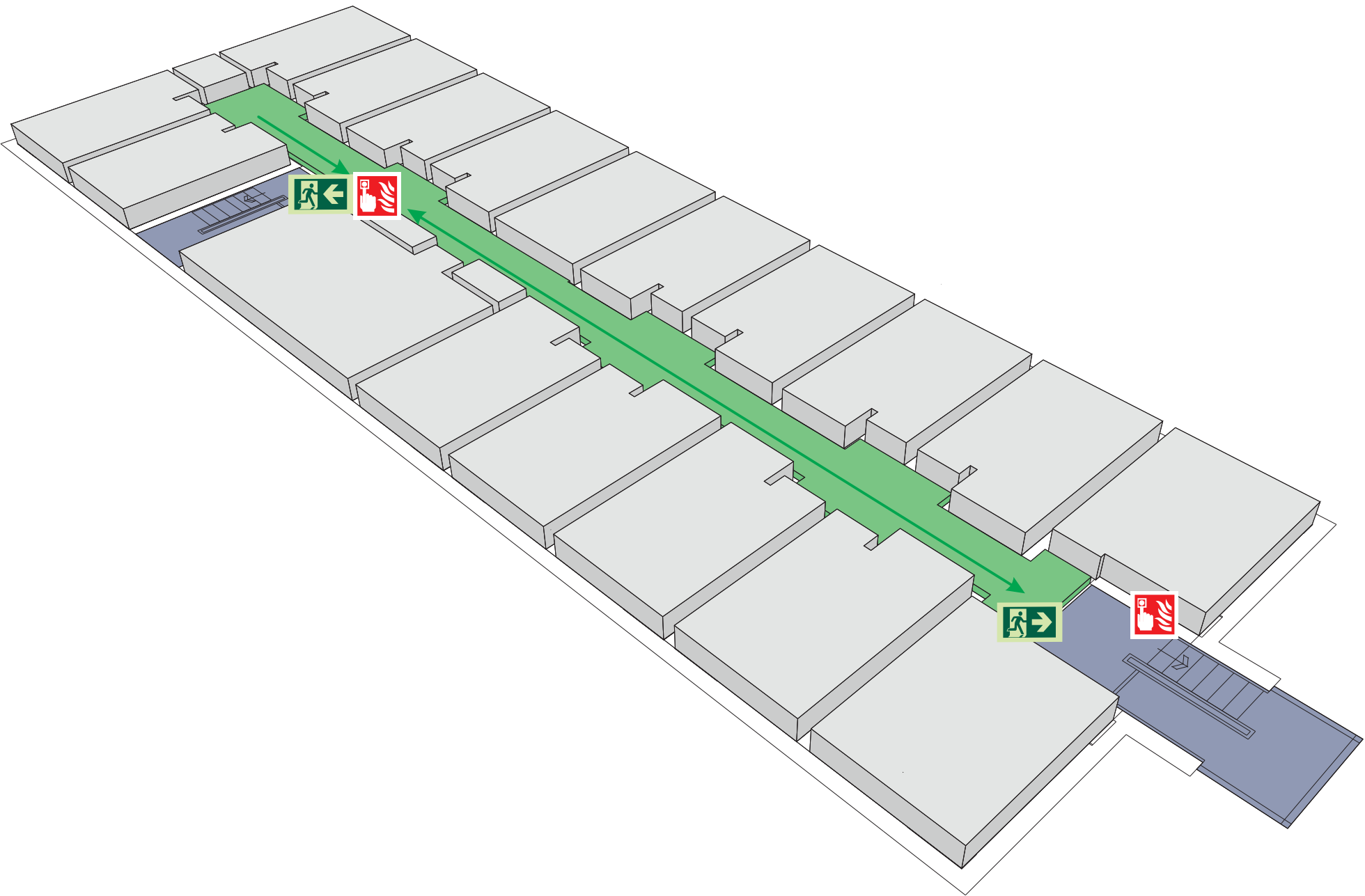


Do not re-enter the building unless told
to do so by the Fire Marshall, Warden or
Fire Service.

ASSEMBLY POINT 24 IS ALLOCATED TO THE
BUILDINGS SHOWN IN YELLOW



Cayley Block 14 Second Floor



Fire alarm
Call point



Fire exit



Wheelchair
accessible exit



Fire escape route



Assembly point



Safe refuge



Evac lift



Evac coms



Non evac coms

Loughborough
University

Cayley Block 15

Reviewed: July 2021

Purpose:

The purpose of a Generic Emergency Evacuation Plan (GEEP) is to enable visitors to the building with restricted mobility or those who may not be able to evacuate unaided to become familiar with the layout, evacuation procedures, available equipment, and communication devices.

If you feel that this document does not provide you with sufficient information or that you require further assistance, please contact the Loughborough University Fire Officer on 01509 222182.

The building:

Cayley Block 15 is comprised of 5 floors. All floors are accessible via the lifts and has one protected stairwell.

The block has a single designated emergency final exit at ground floor level dispersing directly to outside.

Emergency egress using the lift is possible during an evacuation and this will be controlled by existing Loughborough University management processes. Emergency egress by use of the lifts should only be if it is safe to do so.

Each floor has a safe refuge area and provides an Emergency Voice Communication (EVC) System which links directly to security.

Action required on hearing the fire alarm:

If able, you should leave the building immediately by the nearest fire exit (see attached floor plan) and report to the assigned assembly point for the building.

If you are unable to evacuate the building unaided, please proceed to one of the safe refuges located in the stair core (see attached floor plan).

An EVC system is available in each safe refuge. Use this to contact the security team and notify them of your location, details of which are printed on the front of the panel. Full details on how to use the emergency call point are also provided in the safe refuge.

Other recommendations:

It is recommended that all visitors to Cayley Block 15 should familiarise themselves with the layout of the building and with the fire alarm signals.

Security's emergency contact number is 888 (internal lines) or 0800526966.

Equipment provided:

In addition to the general alarm, a safe refuge area is available on each floor. A disabled emergency call-point that links directly to security is located in each of the safe refuge areas.

An accessible fire exit is available on the ground floor of the building (see attached plans), which is also the final exit from the main stair core.



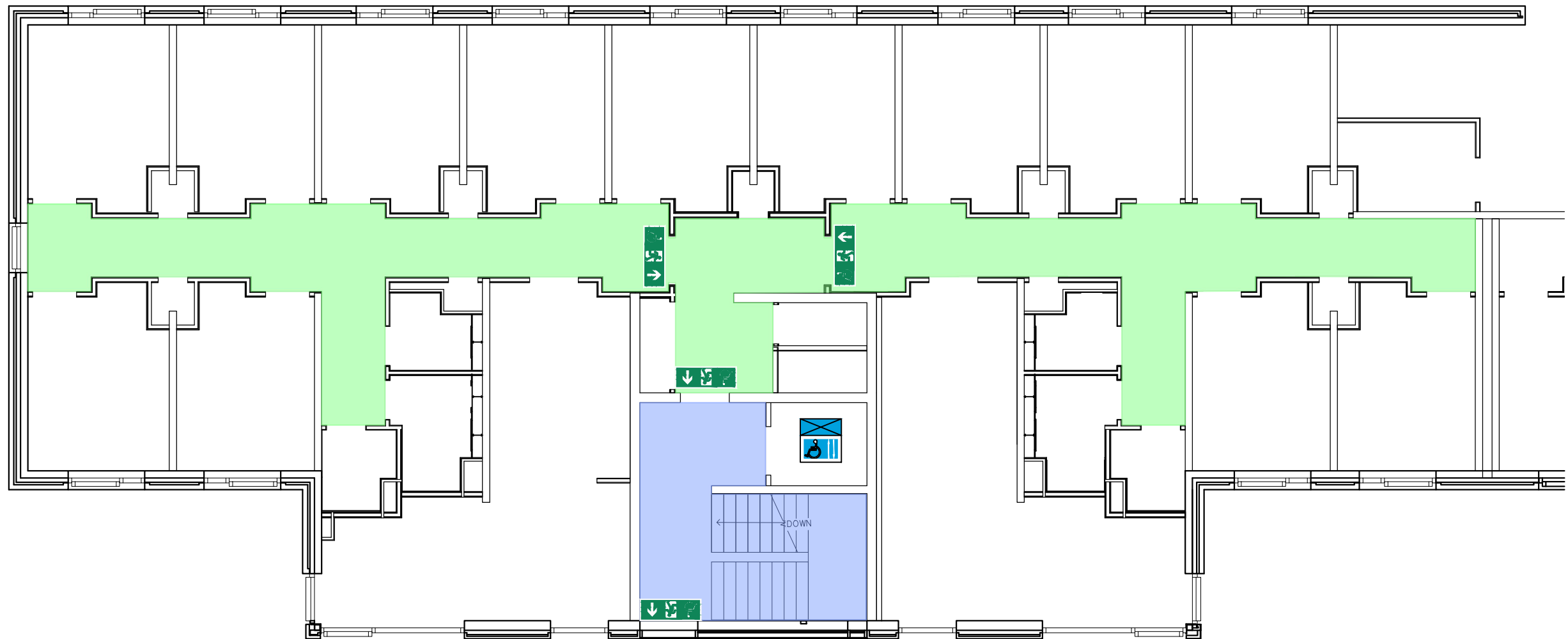
Your Assembly Point Is:

Fire assembly point 24: Car Park area



742 CAYLEY HALL BUILDING 15
GROUND FLOOR

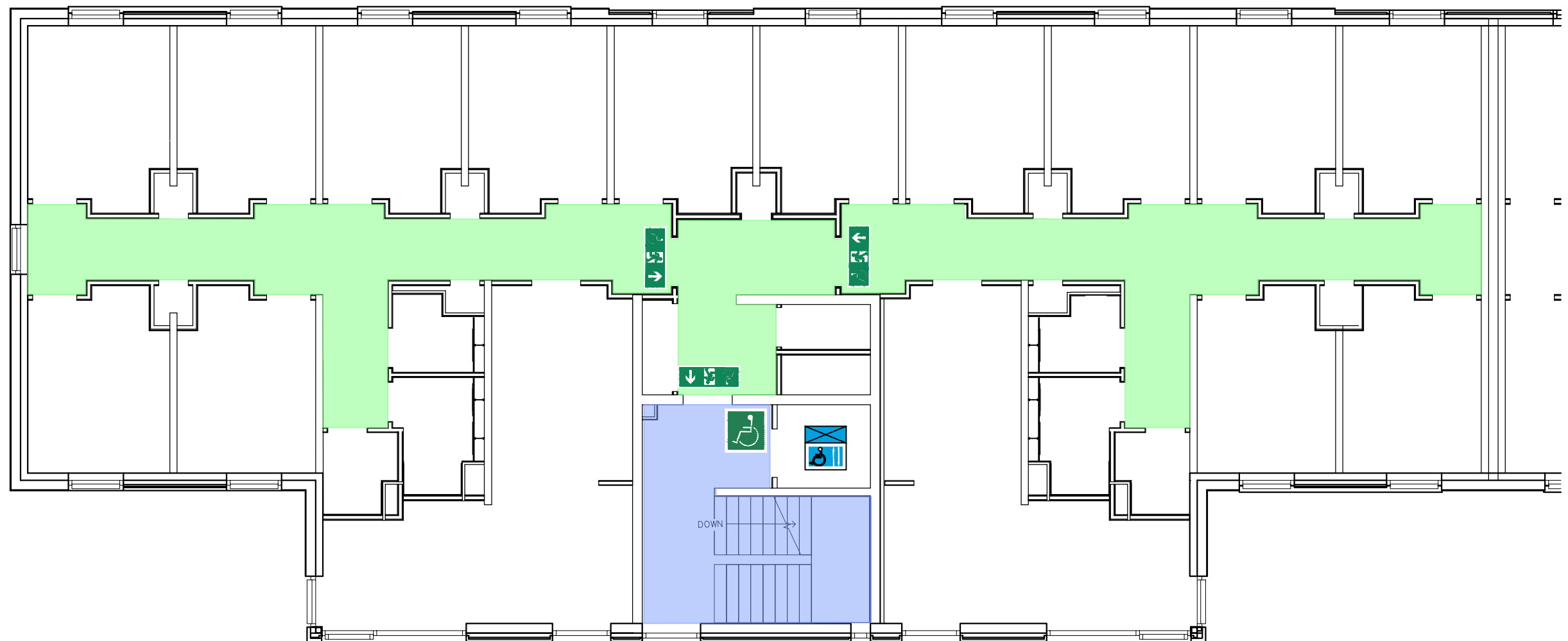
GENERIC EMERGENCY EVACUATION PLAN (GEEP)





742 CAYLEY HALL BUILDING 15
FIRST FLOOR

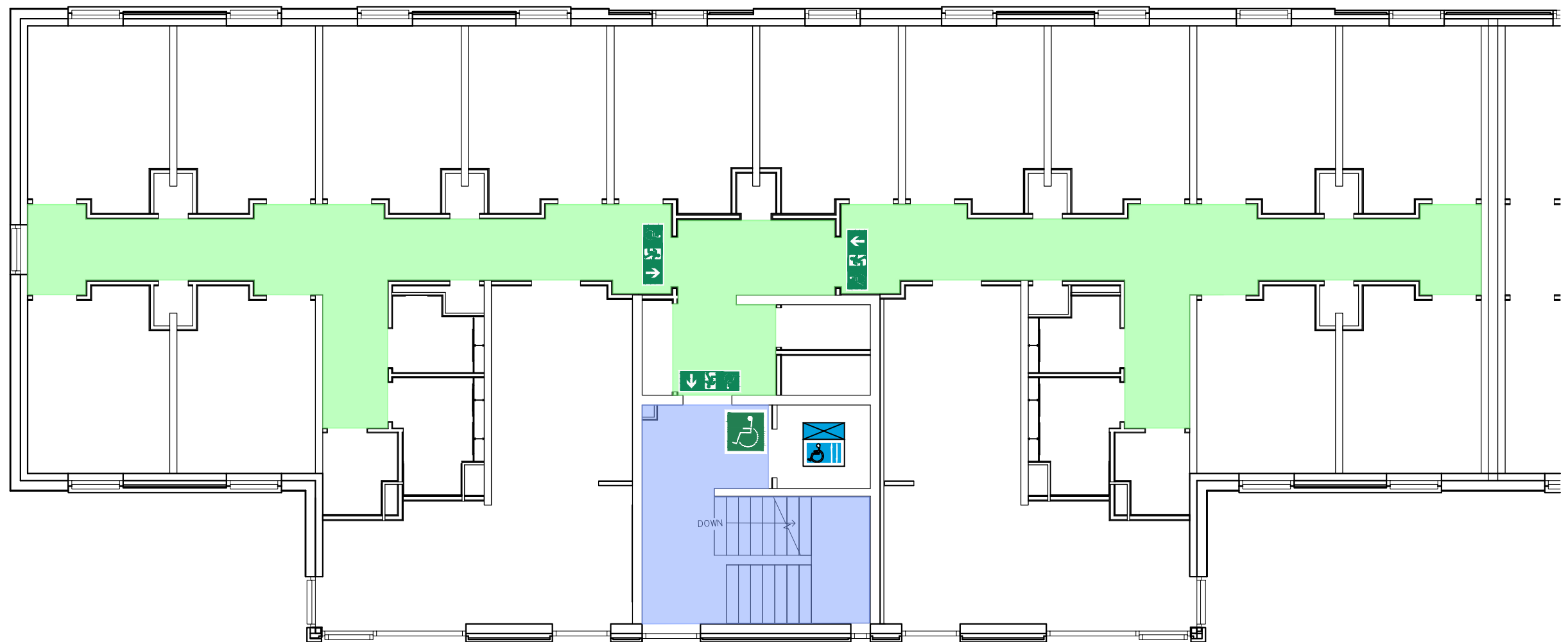
GENERIC EMERGENCY EVACUATION PLAN (GEEP)





742 CAYLEY HALL BUILDING 15
SECOND FLOOR

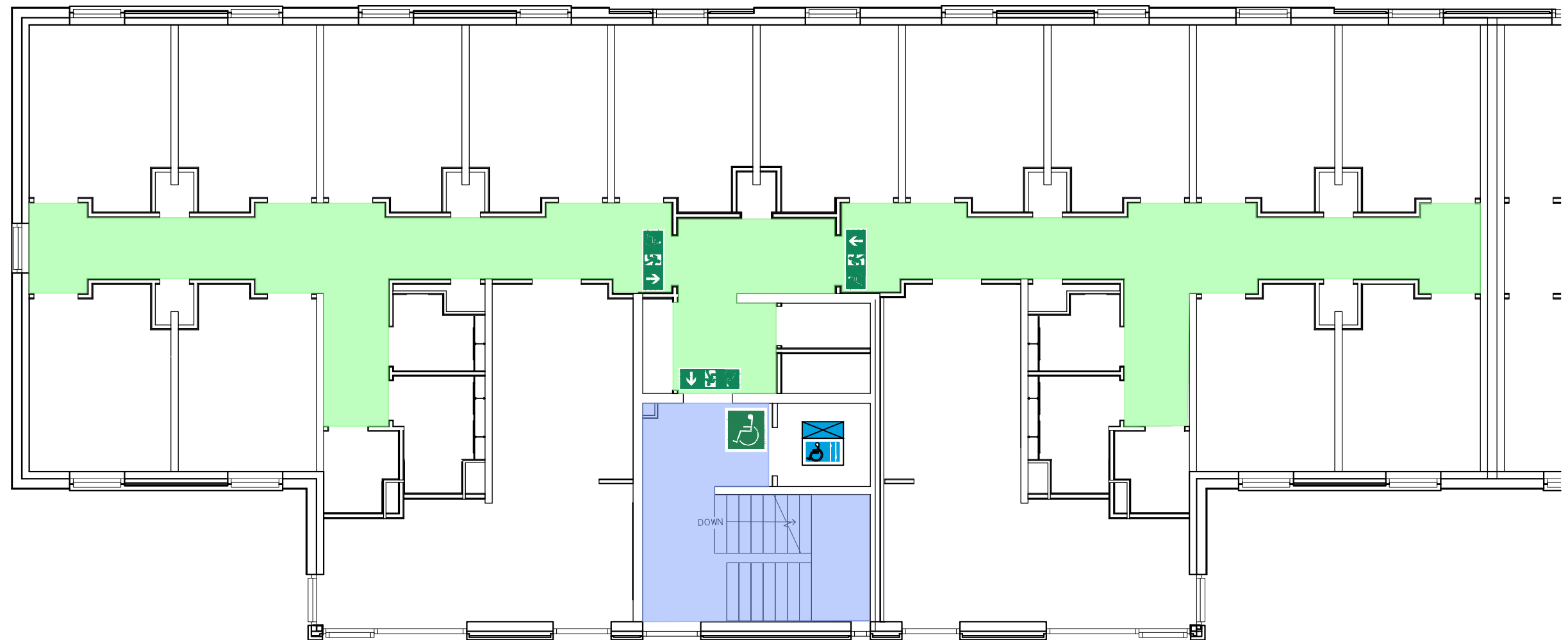
GENERIC EMERGENCY EVACUATION PLAN (GEEP)





742 CAYLEY HALL BUILDING 15
THIRD FLOOR

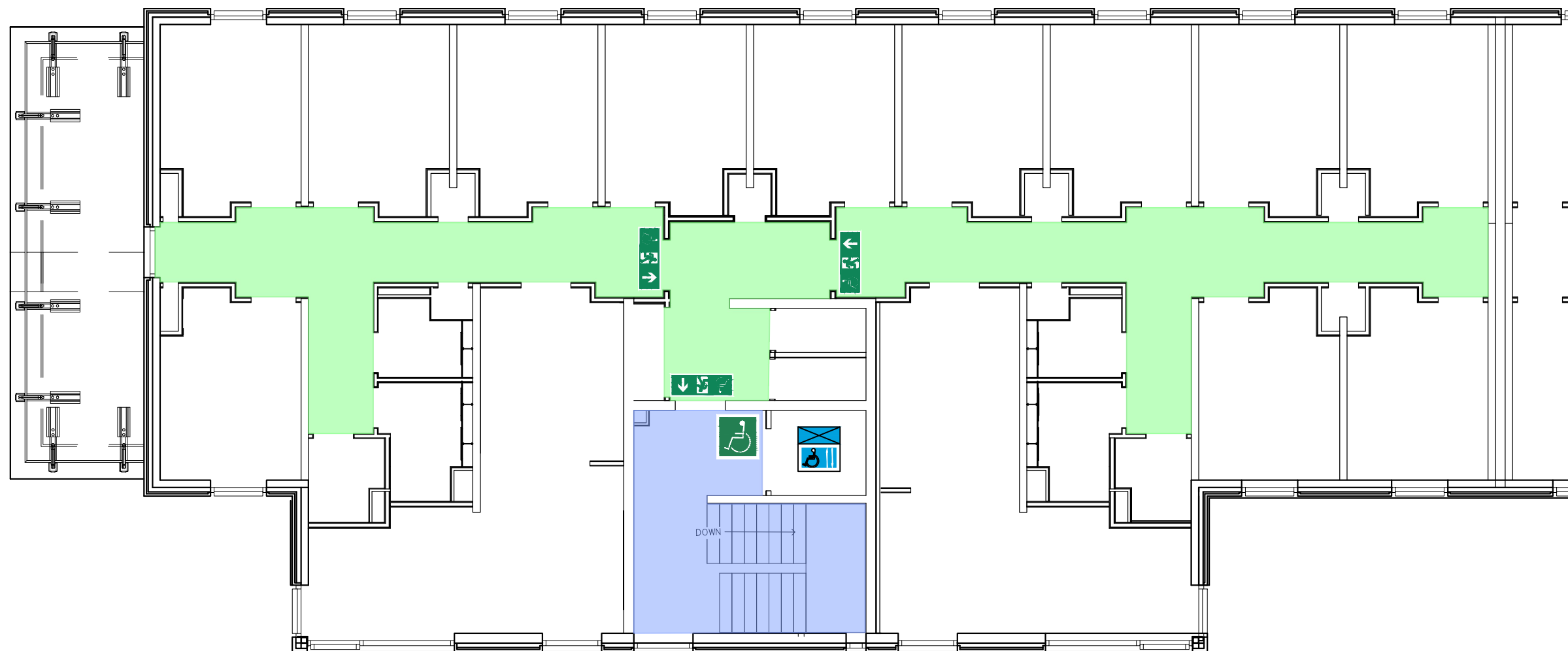
GENERIC EMERGENCY EVACUATION PLAN (GEEP)





742 CAYLEY HALL BUILDING 15
FOURTH FLOOR

GENERIC EMERGENCY EVACUATION PLAN (GEEP)



Cayley Block 16

Reviewed: July 2021

Purpose:

The purpose of a Generic Emergency Evacuation Plan (GEEP) is to enable visitors to the building with restricted mobility or those who may not be able to evacuate unaided to become familiar with the layout, evacuation procedures, available equipment, and communication devices.

If you feel that this document does not provide you with sufficient information or that you require further assistance, please contact the Loughborough University Fire Officer on 01509 222182.

The building:

Cayley Block 16 is comprised of 5 floors. All floors are accessible via the lifts and has one protected stairwell.

The block has a single designated emergency final exit at ground floor level dispersing directly to outside.

Emergency egress using the lift is possible during an evacuation and this will be controlled by existing Loughborough University management processes. Emergency egress by use of the lifts should only be if it is safe to do so.

Each floor has a safe refuge area and provides an Emergency Voice Communication (EVC) System which links directly to security.

Action required on hearing the fire alarm:

If able, you should leave the building immediately by the nearest fire exit (see attached floor plan) and report to the assigned assembly point for the building.

If you are unable to evacuate the building unaided, please proceed to one of the safe refuges located in the stair core (see attached floor plan).

An EVC system is available in each safe refuge. Use this to contact the security team and notify them of your location, details of which are printed on the front of the panel. Full details on how to use the emergency call point are also provided in the safe refuge.

Other recommendations:

It is recommended that all visitors to Cayley Block 16 should familiarise themselves with the layout of the building and with the fire alarm signals.

Security's emergency contact number is 888 (internal lines) or 0800526966.

Equipment provided:

In addition to the general alarm, a safe refuge area is available on each floor. A disabled emergency call-point that links directly to security is located in each of the safe refuge areas.

An accessible fire exit is available on the ground floor of the building (see attached plans), which is also the final exit from the main stair core.



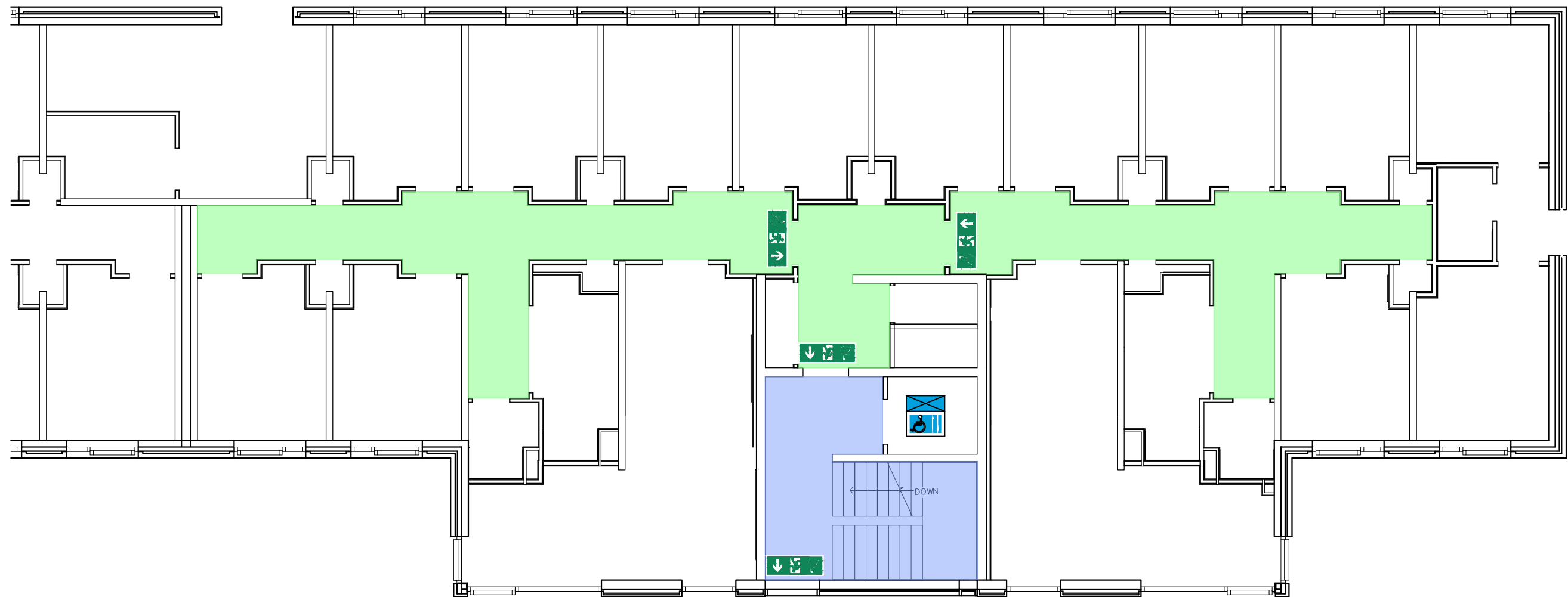
Your Assembly Point Is:

Fire assembly point 33: Car Park area



741 CAYLEY HALL BUILDING 16
GROUND FLOOR

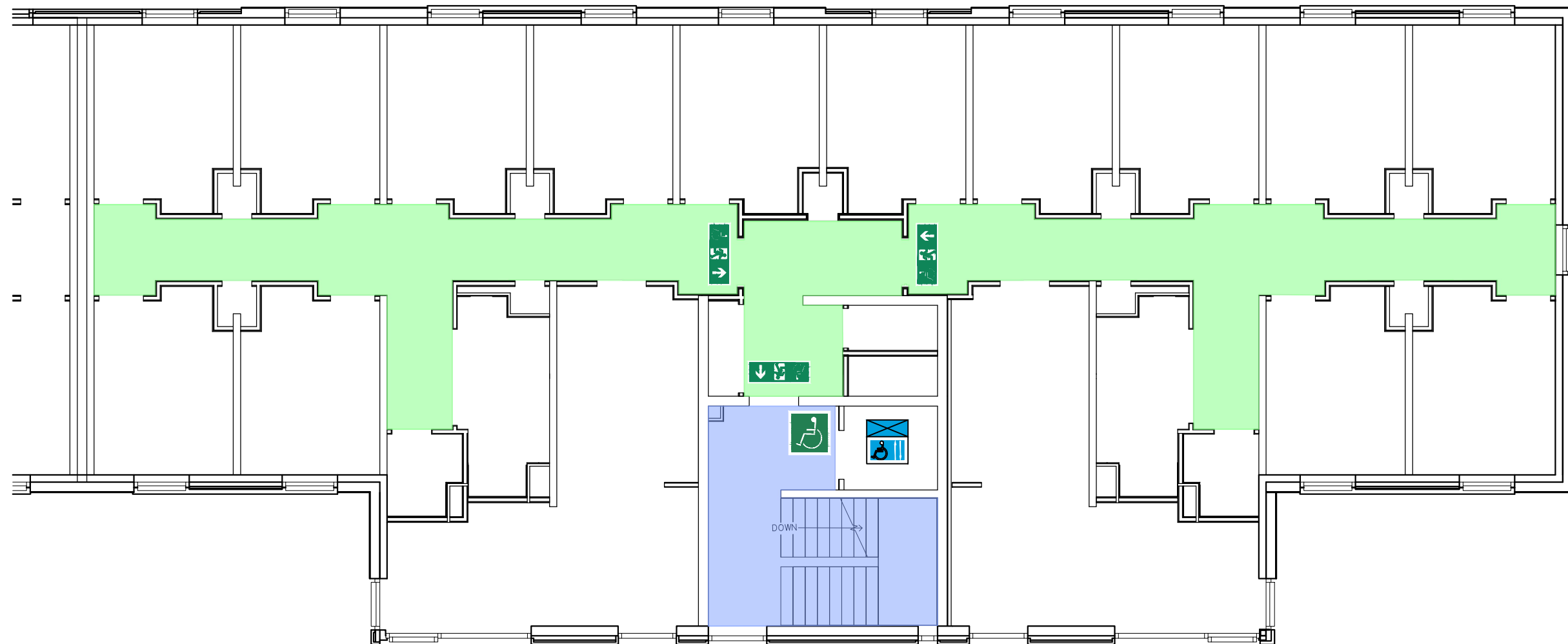
GENERIC EMERGENCY EVACUATION PLAN (GEEP)





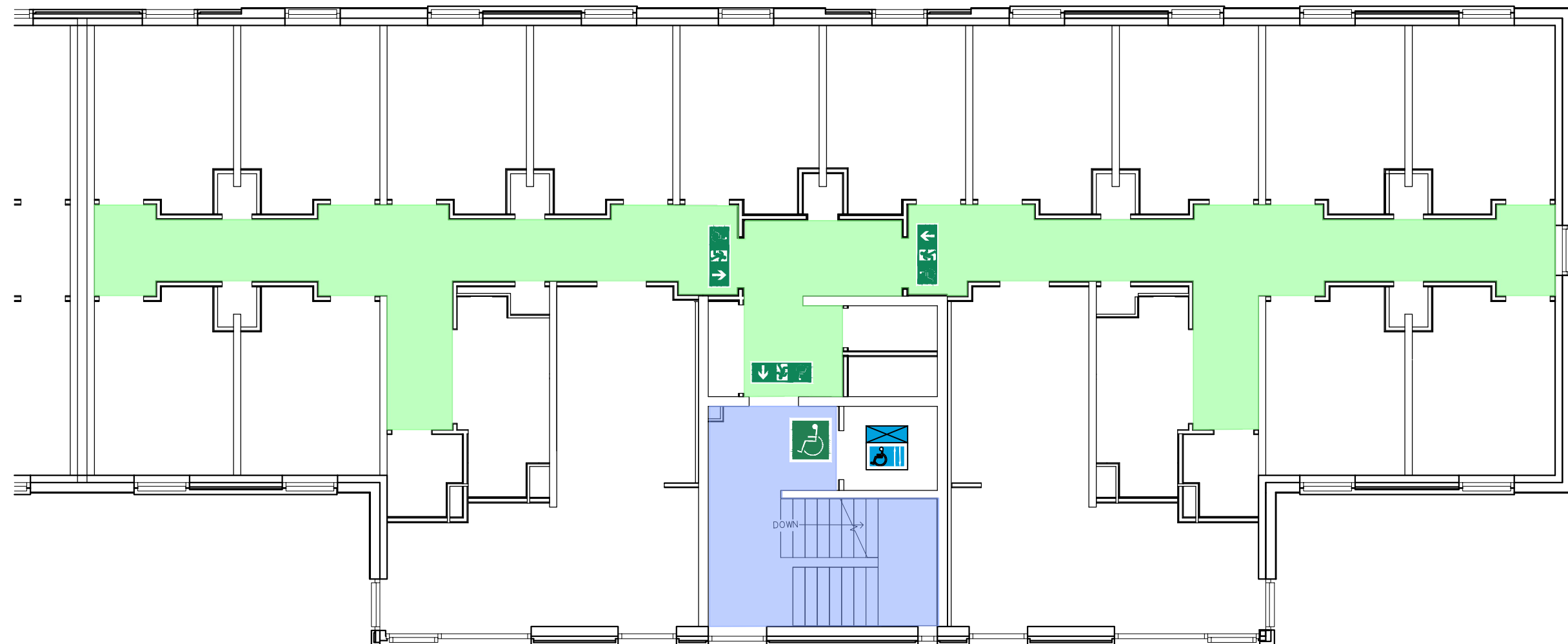
741 CAYLEY HALL BUILDING 16
FIRST FLOOR

GENERIC EMERGENCY EVACUATION PLAN (GEEP)





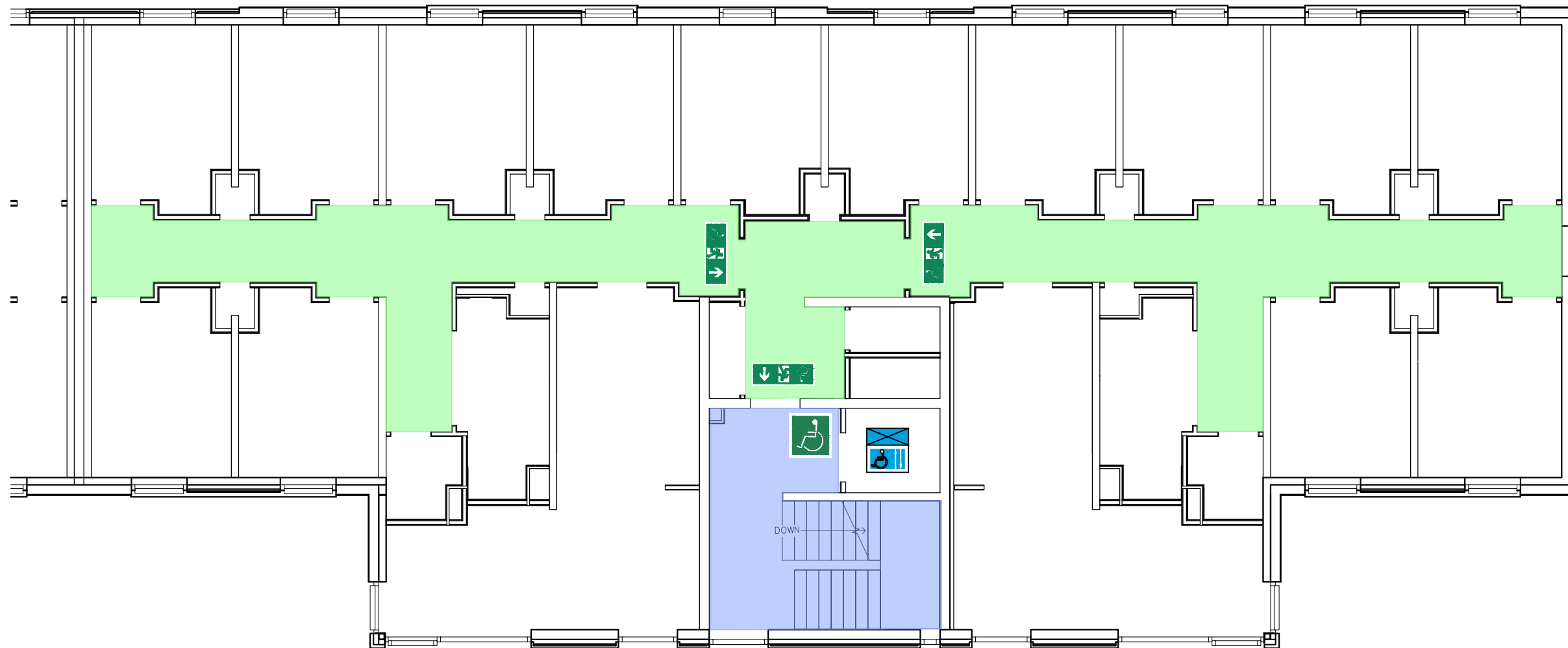
741 CAYLEY HALL BUILDING 16
SECOND FLOOR
GENERIC EMERGENCY EVACUATION PLAN (GEEP)





741 CAYLEY HALL BUILDING 16
THIRD FLOOR

GENERIC EMERGENCY EVACUATION PLAN (GEEP)





741 CAYLEY HALL BUILDING 16
FOURTH FLOOR
GENERIC EMERGENCY EVACUATION PLAN (GEEP)

