

## David Collett Block F

Reviewed: November 2021

### Purpose:

The purpose of a Generic Emergency Evacuation Plan (GEEP) is to enable visitors to the building with restricted mobility or those who may not be able to evacuate unaided to become familiar with the layout, evacuation procedures, available equipment, and communication devices.

If you feel that this document does not provide you with sufficient information or that you require further assistance, please contact the Loughborough University Fire Officer on 01509 222182.

### The building:

Block F has 3 floors Ground (Level 1), 2 and 3, consistent with Blocks D and E for floor levels.

All stair cores in Block F are designated safe refuge areas, each of which provides a disabled emergency call point which links directly to security (see attached floor plan).

All floors in Block F are accessible *via* the lift. This lift is not to be used in an emergency.

### Action required on hearing the fire alarm:

If able, you should leave the building immediately by the nearest fire exit (see attached floor plan) and report to the assigned assembly point for the building.

If you are unable to evacuate the building unaided, please proceed to one of the safe refuges located in the stair core (see attached floor plan).

An EVC system is available in each safe refuge. Use this to contact the security team and notify them of your location, details of which are printed on the front of the panel. Full details on how to use the emergency call point are also provided in the safe refuge.

### Other recommendations:

It is recommended that all visitors to David Collett should familiarise themselves with the layout of the building and with the fire alarm signals. Floor plans and evacuation equipment locations have been provided with this document.

**Security's emergency contact number is 888 (internal lines) or 0800526966.**

### Equipment provided:

In addition to the general alarm, a safe refuge area is available on each floor. A disabled emergency call-point that links directly to security is located in each of the safe refuge areas.

Accessible fire exits are available on the ground floor of the building (see attached plans), and these are to be used as primary exits from building.

The Deaf Alerter system is installed in this building.



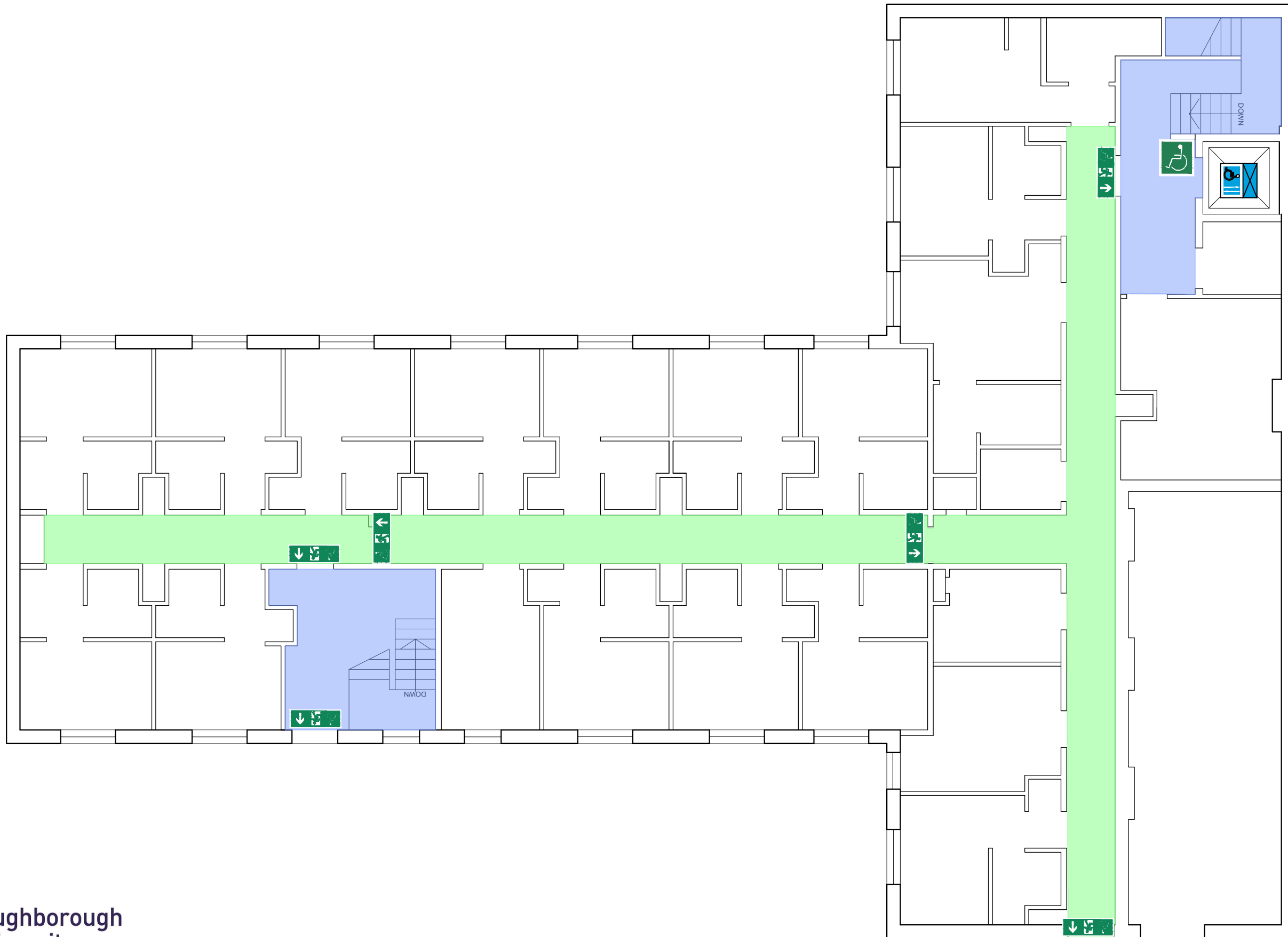
Your Assembly Point Is:

Fire assembly point 29 – Behind David Collett Building



# 538 DAVID COLLETT F BLOCK GROUND FLOOR (LEVEL 1)

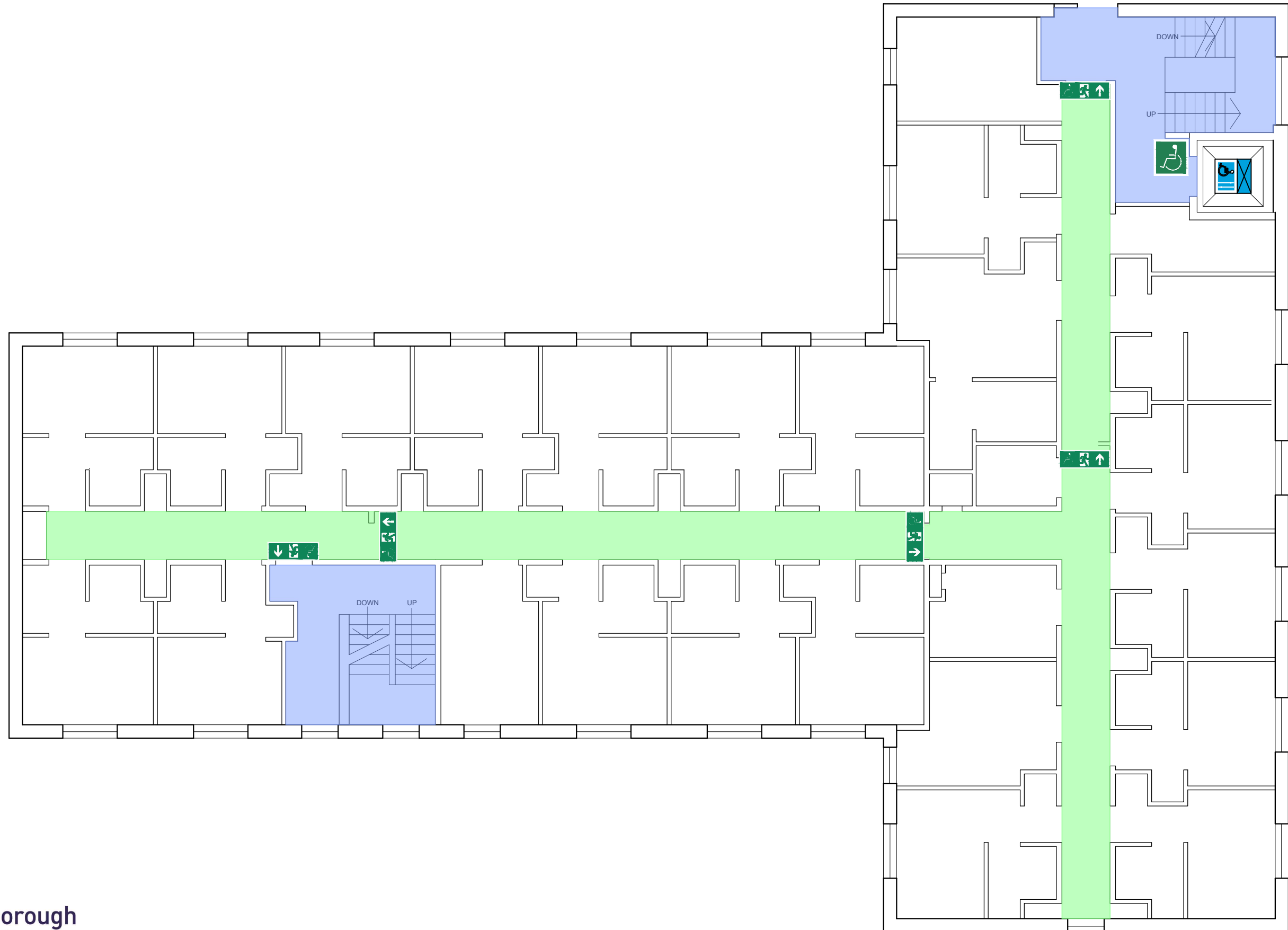
## GENERIC EMERGENCY EVACUATION PLAN (GEEP)





# 538 DAVID COLLETT F BLOCK FIRST FLOOR (LEVEL 2)

## GENERIC EMERGENCY EVACUATION PLAN (GEEP)





# 538 DAVID COLLETT F BLOCK SECOND FLOOR (LEVEL 3)

## GENERIC EMERGENCY EVACUATION PLAN (GEEP)

