

London: the most 'connected' city in the world

London is the world's most 'connected' city for business, according to research carried out by Professor Peter Taylor from the Department of Geography. The study, which was funded by the ESRC (Economic and Social Research Council), has found that the capital is at the heart of commercial globalisation, ahead of even New York, which was rated second. Tokyo, which is so often bracketed with London and New York as the world's three global cities, was only placed fifth.



In order to measure the cities against one another, which has never been undertaken before, Professor Taylor analysed the office networks of a hundred global business service firms, across the spectrum of financial and business services, ranging from accountancy, banking and insurance, to advertising, law and management consultancy.

The data was then used to measure the connections between 316 cities across the world.

"The sheer amount of connectivity across cities is quite remarkable," said Professor Taylor. "Lagos and Nairobi in Africa, Lima and Bogota in Latin America, and

Karachi and Calcutta in South Asia all score well, but overall, the most well-connected cities are concentrated in North America, Western Europe and Pacific Asia."

The top ten cities, in order, were: London, New York, Hong Kong, Paris, Tokyo, Singapore, Chicago, Milan, Los Angeles, and Toronto.

news@lboro

Coe and Moorcroft begin work on athletics facility

Former Loughborough students Sebastian Coe and David Moorcroft have fired the starting pistol for work to begin on the University's new £5 million athletics high performance centre by turning the first turf.



Seb Coe and David Moorcroft brave the wet weather to begin work on the new High Performance Athletics Centre.

Watched by VIP guests at the athletics match, Seb and David 'turned the first

turf' to inaugurate building work on the University's latest

development as part of the English Institute of Sport (EIS). Boasting an eight lane 135m sprint straight, long jump and pole vault areas, and javelin, hammer and discus zones, the indoor athletics facility is due to be completed by March 2003, and will provide a crucial all-weather training base for both Loughborough's students and many of the UK's leading elite athletes.

Continued on page 2

Inside



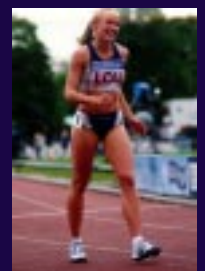
Name that building. Graduate returns for naming ceremony.



Honorary degree. Award for eminent Chinese physicist.



Designs on success. Students sweep the board at RSA awards.



Athletics stars. Aqua-Pura International match report.

news@lboro is published by the Publicity Office, Rutland Hall, Loughborough University, Loughborough LE11 3TU
Tel: 01509 222224
Fax: 01509 223902
Email: news@lboro.ac.uk

Editor: **Hannah Baldwin**
Ext: 2239
Email:
H.E.Baldwin@lboro.ac.uk

Layout by
Helen McCullam and
Sue Rowbottom

Unless otherwise stated,
photos by
AVS Photography

Printed by
John Price & Sons
(Printers) Ltd

Contributions to news@lboro should usually be made on disk or by emailing news@lboro.ac.uk

Due to space restrictions, not all submitted material can be printed. The editor reserves the right to amend or withdraw articles without notice.

Extracts from news@lboro should not be reproduced without prior permission from the Publicity Office.

Issue No 15:
Tuesday 13 August 2002
Copy deadline:
5pm Tuesday 31 July 2002

news@lboro is also available online in pdf format at www.lboro.ac.uk/service/publicity/newsatlboro/newsletter14.pdf

Coe and Moorcroft begin work on athletics facility

Continued from page 1

Chairman of the EIS Steve Cram commented, "Loughborough are key partners as we at the EIS attempt to re-draw the map of English sport."

"Put simply our standards have to be as high as the champions we hope to support. Good athletes dream big and we have to share these dreams."



Architect's impression of the centre, which will be built between the athletics track and the Haslegrave cricket ground.

Lecture on nuclear power marks naming of building

Civil and Building Engineering's Research and Teaching Complex has been named the Sir Frank Gibb Building, after the distinguished Loughborough graduate. The official naming ceremony in April was also marked with a lecture by secretary of the pressure group Supporters of Nuclear Energy and chief press secretary to former Prime Minister Margaret Thatcher, Sir Bernard Ingham.

"Many of the construction industry's senior executives are our graduates, and Sir Frank Gibb is one of the most distinguished; we re delighted to welcome him back to Loughborough for this special ceremony," commented Deputy Vice Chancellor Professor Ron McCaffer. Sir Frank Gibb continues to enjoy a highly successful career spanning over 50 years in the construction industry. His numerous influential posts have included chairman and chief executive of Taylor Woodrow plc, co-chairman of Channel Tunnel contractors TransManche Link, president of the Federation of Civil Engineering Contractors and vice-president of the Institute of Civil Engineers.

Sir Frank has also held key positions in the nuclear industry including the vice-presidency of British Nuclear Associates and chairmanship of the National Nuclear Corporation.



In keeping with his lifelong commitment to the construction industry, Sir Frank Gibb, after whom the building was named, was elevated four metres into the air by a hydraulic lift to unveil the plaque.

Prior to the official naming ceremony, in a fitting lecture on 'The case for Nuclear Power', Sir Bernard Ingham said that after campaigning without principle against nuclear power for 25 years, the 'Green' movement now fears that the Government is moving crabwise back

towards nuclear energy, and the reason for this is the arithmetic of electric supply. Over the next twenty years the national contribution to supplies from nuclear power will fall from 25% to 3% as ageing stations close. Current plans are to replace 20% of that 22% gap by 2020 with renewable sources of energy through energy conservation. However, Sir Bernard believes this to be impossible. "The alternative is to burn more mucky coal, oil and gas, and pour more greenhouse gases into the atmosphere. Over the past two years, British emissions of carbon dioxide, the major greenhouse gas, have gone up – even though the current nuclear contribution is annually avoiding the production of 60m tonnes of carbon dioxide. Imagine how much muckier we shall get without nuclear power," he said.

According to Sir Bernard, the Government's dilemma is even greater because, even if renewables are producing 20% of our electricity by 2020, the gap in supplies will be far greater than 2% because electricity demand is showing a steady rise of some 2% a year. "The Government has to replace the nuclear stations currently planned for closure," he concluded.

Leading the way in league tables

The first two league tables of 2002 have shown that Loughborough is leading the way in Leicestershire, being the highest ranked university in the county.

The *Financial Times* university league table, published on 11 May, confirms the progress of Loughborough, which this year rose to its highest ever placing of 16th position, a leap of 14 places from last year. Now in its fifth year, the *FT* league table provides a comparison of universities across 16 categories including teaching and research, employment, and applications to places. In the individual tables, Loughborough was ranked fourth for teaching quality, and fifth for the amount of income from industry per full-time student.

Published the same week, the overall league table in this year's *Times Good University Guide* ranked Loughborough in 14th position – a rise of seven places from last year – based upon nine measures of university quality, including teaching and research, student retention rates, and staffing levels. Among the highlights for Loughborough in the individual subject tables were top placings for Communication and Media Studies, and Librarianship and Information Management.

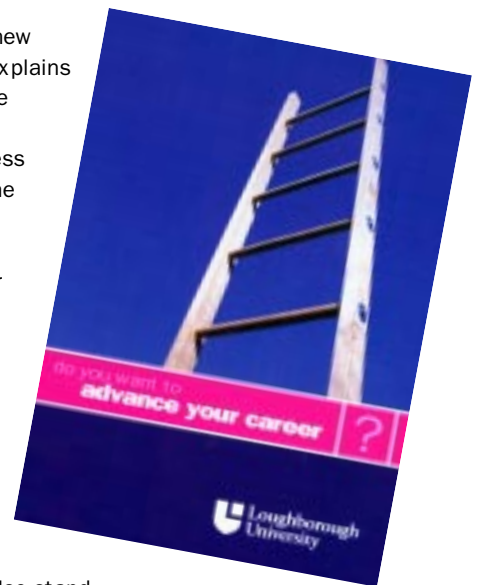
“It is a measure of the sustained dedication of all staff and their commitment to providing education and research of the highest calibre,” said Professor Ron Summers, Head of Information Science. “The facts, taken from the *Times Good University Guide 2003*, when combined with buoyant international recruitment and research activity, reveal a Department of world-class status.”

Head of Social Sciences Professor Peter Golding noted, “This ranking confirms Loughborough as the most successful centre in the country for social science oriented media and communication studies. Our new postgraduate programme, starting this autumn, in Media and Cultural Analysis, puts in place the final piece of an internationally recognised top quality range of teaching at all levels in this field. This reflects our similar standing in sociology, social psychology, and social policy.”

Pilot programme for business and industry launched

Loughborough has been selected by the Department for Education and Skills (DfES) to host a pioneering new postgraduate programme, which allows students to design their own course of study. Developed in collaboration with industry and national training organisations, the part-time Postgraduate Certificate in Continuing Professional Development has been specifically designed to fit in with the existing responsibilities of those already in employment, and aims to increase the retention rate of graduates in East Midlands' businesses.

“This is a completely new type of programme,” explains Anna Hughes, graduate apprenticeship project manager at the Business School, which hosts the course. “It enables students to tailor their training to reflect their individual learning needs, and because they continue working while they study, they are able to directly apply the knowledge they're gaining to their everyday work.”



Regional businesses also stand to benefit from this new course. Specific emphasis is placed on the development of the practical skills needed to address today's most challenging management issues, and the transferability of knowledge and competencies from the classroom to the work place. The course will also help to build a lasting culture of learning among managers, which in turn could help with graduate retention in the region: the East Midlands has traditionally been a net exporter of graduates, with approximately two thirds of those who study at one of the region's higher education institutions leaving to pursue careers elsewhere upon completion of their course.

The new programme consists of a compulsory introductory business module, plus a further two or three optional modules selected from the wide range

available across the University, and a work-based project chosen by the candidate. On completion, candidates gain a Postgraduate Certificate in Continuing Professional Development, and the Graduate Professional Development Award, given by the Sector Skills Council.

The inaugural three-day compulsory foundation module will run from 8 July 2002, with further modules commencing the following September. A special introductory price, at half the normal rate, is available for any candidates from small businesses who sign up for the July dates.

Further information about the new programme is available from Anna Hughes, on ext 8845, email A.K.Hughes@lboro.ac.uk or at www.lboro.ac.uk/business/pages/GA.html



The Centre for Research in Social Policy (CRSP) has been presented with a framed certificate, signed by the Governor of Texas, Rick Perry, and a flag as a token of appreciation for inviting Larry Temple – the head of the Texas Workforce Commission, which deals with work and welfare issues – to a two-day international seminar held in London earlier this year. Run by CRSP, the workshop, on evidence-based policy-making, was attended by around thirty UK and US academics and researchers, policymakers and politicians.

Honorary degree awarded to eminent Chinese scientist

Professor Chen Jia'er – President of the National Natural Science Foundation of China and of the Chinese Physical Society – received an honorary degree from the University on 10 April. Before an audience of notable guests, the degree – Honorary Doctor of Science (Hon DSc) – was conferred upon Professor Chen Jia'er by the University Chancellor, Sir Denis Rooke, in recognition of his contribution to education and science, at the annual conference of the Institute of Physics in Brighton.

Chen Jia'er was born in Shanghai in 1934. Having entered Weiyu secondary school, Shanghai, after the Second World War, he went on to Dalian University in 1950 to study Physics, before transferring to Jilin University, where he continued as a teaching assistant on graduation.

In 1955 he moved to Peking University and was given the responsibility of founding the first nuclear physics laboratory in China, thus beginning a distinguished career in accelerator physics.

In 1963, Chen Jia'er came to the Rutherford Laboratory, and to Oxford, before returning to



China in 1966 an internationally recognised scientist.

He was appointed Vice-President of Peking University in 1984, with responsibility for research and development, and in 1996, he became President of the University, leading it from strength to strength through its

centenary in 1998 and establishing it as one of the great universities of the world.

Four years later he was appointed President of the National Natural Science Foundation of China.

Professor Chen Jia'er is also Director of the Division of Mathematics and Physics of the Chinese Academy of Sciences, a Member of the Executive Committee of the Presidium of the Chinese Academy of Sciences, and President of the Beijing Association of Science and Technology.

In brief...

Second year MEng student **Peter Neal** has been chosen by the Royal Academy of Engineering to join its Engineering Leadership Awards programme. One of just thirty students nationwide to have been selected, Peter receives an award of up to £7,500, which he is able to use in the way that will best help his career.

A new book, **Charnwood's Silver Jubilee**, charting the past 25 years of the borough, has been published. Written and compiled by Don Wix and Ian Keil, formerly of Economics, and illustrated with over 800 photographs, maps and diagrams, the book chronicles the many changes which have taken place in the years since the borough was created in 1974. Covering areas such as employment, shopping and twinning, *Charnwood's Silver Jubilee* also tells the history of the education sector. Priced £4.95, the book is available from local book shops, including Blackwell's on campus, news agents, Charnwood Museum, the Town Hall, and the Council's office at Southfields.

Council report

Major items from the meeting held on 19 April 2002

The impact of the increase in National Insurance contributions, as announced in April's Budget, will add approximately £600,000 to the University pay bill from April 2003. Research and development tax credits were also extended to large companies in the Budget, providing opportunities for Loughborough. An increase in the University's contributions to pension funds is expected, in light of falling investment returns and increases in life expectancy. The Vice Chancellor also announced that the University had received an increase in the HEFCE recurrent grant, which was welcomed by Council.

The value of new research grants and contracts gained in the period to 31 March is £21.9m, compared with £24.8m for the whole of last year, and the value of applications that could potentially be realised this year was approximately £21m. Student applications for the 2002-03 year are encouraging, with undergraduate UK/EU numbers increasing by 4.5% and undergraduate international applications up 26.9%. There was also an increase in

postgraduate taught international applications, and international research student applications are also encouraging.

The University is in discussions with Ford Dagenham to be part of a new initiative – the Centre of Engineering and Manufacturing Excellence (CEME), which was to be developed as an education and innovation facility run by a partnership of businesses, universities, FE colleges and government agencies. Loughborough has been invited to be lead partner for engineering subjects. The University has also entered into negotiations with BAE SYSTEMS and the East Midlands Development Agency (EMDA) to create the Systems Engineering Innovation Centre (SEIC) to undertake research, vocational training and knowledge transfer.

Structural deficits

A progress report on the departments defined as being in structural deficit was received. European Studies' financial position remains a concern, and its three-

year business plan will be considered by Operations Sub Committee. Discussions over Physics are continuing, and a Review Panel will consider the future direction of Chemical Engineering. It was agreed that Electronic and Electrical Engineering, and Chemistry should be removed from the list.

Council was updated on the posts of Director of Innovation and Knowledge Transfer and Pro Vice Chancellor (External Relations). After considerable discussion, it was decided that the posts should be redefined – PVC(ER) would become the Director of External Relations, and the Director of Innovation and Knowledge Transfer post would be expanded and renamed the Director of Business Partnerships and Knowledge Transfer (DBPaKT). It was agreed that the PVC(ER) post would be advertised internally, and the current Deputy Vice Chancellor would be appointed as DBPaKT from 1 August 2002. Professor Phil Roberts, who is currently Dean of Social Sciences and Humanities, was confirmed as the next Deputy Vice Chancellor.

Lecturer's heavyweight sculpture unveiled in country park

LUSAD lecturer Dan Archer has unveiled a magnificent 23-ton sculpture in the heart of Woodmere Country Park Chesterfield. Property developers Miller Homes and Chesterfield Borough Council commissioned his sculpture to act as a universal symbol of change and transformation in the community.

In fitting tribute to the family of iron founders who originally owned the Woodmere Country Park site, each 1.5-ton crucible is cast from iron. The sculpture's stone portal was imported from Xiamen in China, where Dan personally supervised the cutting and quarrying. Its final weight of 20 tons was so great that a 50-ton crane was used to install the sculpture in the park's grounds. The sculpture, now on public display, consists of a large stone gateway with two

equal sized crucibles. Inspiration for this ambitious project came from the ancient symbolism of the crucible, as Dan explains. "Alchemists used the crucible to change lead into gold, a metaphor for the transformation of the soul."

The Woodmere sculpture is just one in a long series of prestigious commissions for Dan, and will form a part of his 'gateway' sculpture series representing change and transformation. He exhibits

widely both in the UK and abroad, and has solo exhibitions at The Yorkshire Sculpture Park and The Royal Institute of British Architects. He has made large works at symposia in Japan, South Korea, Italy and Germany, and was the stone carving fellow at KKV – Bohusians in Sweden in 1998.

As second year coordinator in Sculpture at Loughborough, Dan is committed to the development of students' professional practice, through commissioned

work on public sites. Significant student achievements include commissions for NatWest HQ in Bristol, Westminster Woods in the New National Forest in Derbyshire, and an exhibition at Sheffield Cathedral sponsored by the world's leading steel manufacturers AvestaPolarit.

A major show of Dan's work will take place in June at Lincoln Cathedral, and his next sculpture will be installed in Sutton, South London, this summer.



Dan Archer

Sumptuous silks and cool cottons bring students design success

LUSAD students Holly Mansergh, Faye Maguire, Lucy St John and Juliet Hawkins have fought off strong competition from over a hundred art and design colleges throughout the UK to win awards for their printed textile designs at the RSA (Royal Society for the encouragement of Arts, Manufactures and Commerce) Student Design Awards.

The students, who are in their final year, swept the board in the Home Furnishings category, taking all four prizes. Each received a CV Home Furnishings Ltd Attachment award of £800, which will enable them to undertake four-week work placements with award sponsors and leading brand Dorma.



(L-R) Lucy, Faye, Juliet and Holly.

"This is wonderful news for textiles at Loughborough, and richly deserved," said Dave Johnson, programme leader for printed textiles. "Our students have excelled in major national awards such as RSA and New Designers for many years, and their work is often bought by household names such as DKNY and Ralph Lauren. These awards represent an excellent opportunity for the students to gain further 'hands on' experience in a top design studio."

Old paperbacks and stale pipe smoke win national award for graduate

Loughborough graduate Cerian Edwards has won a national award for the best undergraduate research dissertation in Publishing. Cerian's dissertation, entitled *Old Paperbacks and Stale Pipe Smoke: A Study of the Secondhand Book Trade*, studied the effects of Internet trading on the secondhand book trade and won the Sue Thomson award worth £750.

Cerian graduated in July 2001 with a BA (Hons) degree in Information and Publishing Studies. The award was presented to her by John Whitley, Chief Executive of The Publishing Training Centre, at a ceremony held at the University's Department of Information Science last month.

Recognition

The Sue Thomson awards, which are presented annually by The Sue Thomson Foundation and are administered by The Publishing Training Centre, are awarded to the undergraduate

and postgraduate judged to have written the best research dissertations on a publishing-related topic.

Dr Fytton Rowland, programme tutor for the Publishing degree, said, "We're delighted that Cerian has won this national award, which recognises her excellent work in producing a research dissertation of the highest quality. It is also gratifying to receive recognition of Loughborough's publishing degree programmes from the main organisation involved in training for the publishing industry in the UK."



Businesses support sporting stars

Local firm Gill Cooke Personnel Ltd, and FaulknerBrowns, the architects of the University's new £7 million state-of-the-art Olympic-sized swimming pool, have underlined their commitment to UK sport, by offering to support Loughborough's sporting elite.

Gill Cooke Personnel Ltd has pledged to support Loughborough's 250 Club for a second year, matching pound for pound the sum raised through membership donations to the University's sports scholarship scheme. The scholarships provide financial and in-kind support to help talented students, studying any subject, to succeed in both their sporting and academic development.

"In the last twelve months, membership payments, together with the matched funding from Gill Cooke, meant that a total of £6,000 went towards our sports scholarship scheme," says sports fundraiser Lisa Farmer. "With Gill Cooke's support for another year, we'll hopefully be able to raise even more funds for our students."

The final 250 Club prize draw for this year took place at the end of May, and existing members are now being asked to renew their membership for next year's prize draws,

starting this month. New members are always welcome too, and if anyone would like further information on the Club, they should contact Lisa on ext 8698 or by email at L.Farmer@lboro "For just £25 a year," Lisa explains, "each member is eligible to take part in ten monthly draws for a £50 prize, the £500 November prize, and the bumper Christmas draw of £1,000, with the remaining funds helping to support Loughborough's sports scholars, like swimmer Karen Brown."

Human Biology student Karen began her degree last October and has a promising swimming career ahead of her. Already a GB Junior International, Karen became England Senior Long Course Champion in July 2001, and while at University she has achieved a string of BUSA accolades – she was crowned National Short Course Champion and Record Holder in the 50m, 100m and 200m Backstroke, and was also named Female Swimmer of the Meet 2001.



Bruce Turnbull (L), senior director at FaulknerBrowns, with sports scholar Karen Lee and Ian Armiger, Loughborough's director of swimming.

Karen is now being sponsored by pool architects FaulknerBrowns in a three-year deal, and the company's senior director, Bruce Turnbull, explains why they were keen to support this talented swimmer. "For forty years FaulknerBrowns has been successfully involved in the design, development and provision of competition swimming facilities to the highest standards throughout the UK and more recently in Europe. We are delighted to have this opportunity to assist one of the country's most successful competitors whose dedication and ambition are to be admired."

Loughborough do the double!

Arsenal have achieved the double... and now Loughborough have done the same, after being crowned champions of both the British Universities Sports Association (BUSA) and Leicestershire League Division One!

Playing in front of a large crowd, Loughborough Dynamo put on a determined performance against eventual league runners-up Ratby Sports to take the Leicestershire League Division One Championship in April. Jay Larkin scored after twelve minutes from a

25 yard free kick, and shortly afterwards Nathan Bennett crossed for Gary Bouse, who headed the ball in to make the final score 2-0. Dynamo's win

takes them into the Premier League for the first time in their history.

Then just a few days later, Loughborough men's first team beat defending champions Bath University in the final BUSA

opportunities for the Loughborough side and after 21 minutes, they took the lead. Nine minutes later it was 2-0, causing the opposition to change their formation and make a substitution in an attempt to claw back into the game. Post

efforts, Loughborough continued to impose themselves upon the game and won their first BUSA Championship since its re-designation from the old UAU Championship.

Loughborough's Head Coach Darren Robinson was delighted with his side's performance. "They were magnificent. We knew that Bath would be a good side, particularly as they operate a full-time programme, but our boys have also worked hard this season. They played with true passion and spirit and also showed a quality throughout the side in possession and defensively that was enough for us to win the championship. We'll now enjoy the break and look forward to competing in the European Championship this autumn," Darren said.



Loughborough Dynamo FC.

Championship. Loughborough started the game positively, dominating the early stages. Good pressure and a willingness to go forward created scoring

half time Bath increased their intensity but found Loughborough's back four in excellent form and rarely tested their goalkeeper. For all Bath's



Aqua-Pura International: match report

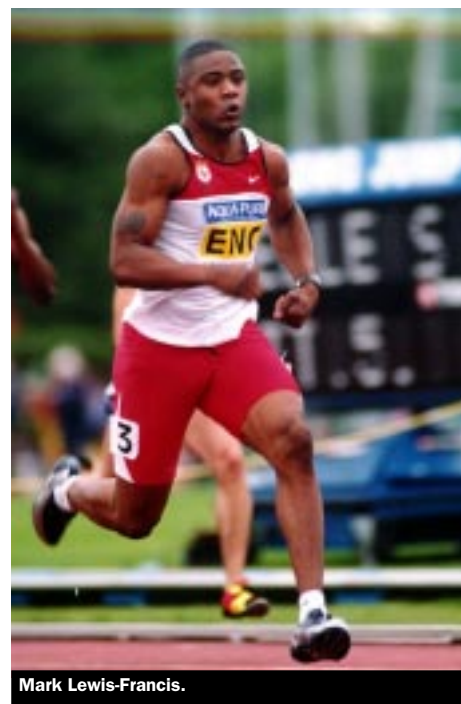
Grey clouds may have covered the Loughborough stadium for much of this year's Aqua-Pura International match, but a doggedly enthusiastic crowd cheered along some fantastic athletics performances, at an event which saw no fewer than 41 current and 30 former Loughborough students competing.

The match was immediately brightened by the 'electric' running of rising British star Mark Lewis-Francis. Running for England in the 100m, the 19-year-old recorded an equal life-time best of 10.10s in his first outing of the season. Lewis-Francis clearly likes the Loughborough event, and it was here that he burst onto the scene two years ago, beating GB team mate Darren Campbell in the season's opener.

favourite, Ben Challenger, who finished fourth in the High Jump behind veteran Dalton Grant.

Loughborough fared better in the 800m however, taking the first three places, with Simon Lees first, Ricky Soos second, and Alasdair Donaldson, who was running for Scotland, finishing third. In the 1,500m, Tom Mayo and Conor Sweeney came in first and second, and the Students' team of David Naismith, James Chatt, Bradlev Yiend and Liam Collins finished second behind England in the 4x400m relay.

Pride of place in the women's track events must go to former student Tara Kryzwicki who, despite the conditions, narrowly missed the British record for the 2,000m Steeplechase, and to sports scholar Alex Carter, who won an exceptional 800m race. Loughborough's Hayley Tullett came home in a very creditable second in the 3,000m, behind England's Jo Pavey, who narrowly missed Paula Radcliffe's meeting record for the event.



Ian Hebden

Mark Lewis-Francis.

Leading an exceptionally strong Loughborough throws team, the ever-popular Emeka Udechuku won the Discus, with a throw of 57.67m; while former student Emma Merry recorded a third place in the women's Discus, and Suzanne Roberts went one better with a second in the Hammer.

There was a shock in the Pole Vault for England's Janine Whitlock, who trains at the Loughborough high performance centre, as she suffered her first defeat by another British competitor in six years, being narrowly beaten by Liz Hughes. But with sunshine finally bathing the stadium, Loughborough's Mark Beharrell entertained the crowd to the last, winning the men's Pole Vault with a personal best of 5.01m – a new Loughborough Students club record – to round off another successful Loughborough event.



A smiling Alex Carter, whose fantastic finish in the 800m thrilled the crowd.

Ian Hebden

The day was stolen, however, by former Loughborough student and sports scholar Chris Tomlinson, who last month broke Lynn Davies' 34-year-old British Long Jump record, with a jump of 8.27m. The Loughborough meet saw three British men clear the eight metre mark in the same competition for the first time ever, with Tomlinson leaping 8.17m in his final jump, setting a new British junior record and overhauling two other highly promising jumpers, Nathan Morgan and Jonathan Moore.

Continuing his explosive start to the season, Loughborough's Chris Rawlinson again bettered his personal best in the 400m, finishing in 46.13s – a result which makes him the British number one in both the 400m and his more usual event, the 400m Hurdles. There was disappointment though for another local



Ian Hebden

Mark Beharrell celebrates his victory in the Pole Vault.

Match results

1. England	200
2. Loughborough Students	135
3. GB Juniors	116
4. British Universities	115
5. Scotland	110
6. Wales	101

Full results can be found at www.Loughborough-athletics.com/results/track02/aqua.php

Aeronautical and Automotive Engineering

Industrial Trent

Dr J F Carrotte and Dr A Barker
£61,500 Rolls Royce

Modelling of Unsteady Combustion in Low Emission Systems

Dr J F Carrotte, Dr P A Denman,
Dr G Wigley and Prof J J McGuirk
£173,116 European Commission

Business School

Contemporary Service Work

Dr M Korczynski
£12,579 ESRC

Security Risk Management Research Seminars

Prof G Chivers
£16,405 ESRC

Chemical Engineering

Chair in Pipeline Technology

Prof R J Wakeman
£340,000 Royal Academy of Engineering/Advantica

Equipment Grant

Prof G Hankinson
£6,457 Royal Academy of Engineering

CRSP

Preliminary Research to Investigate the Additional Needs of Disabled People

Dr B Dobson
£28,486 Joseph Rowntree Foundation

Information Science

The Development of Terahertz Technology for Physical, Biological and Medical Imaging and Spectroscopy

Prof C Mcknight
£56,098 ESRC

Electronic and Electrical Engineering

Compressed Memory Embedded CPU Technology

Prof S R Jones
£18,750 ARC

Impacts of and limits to Widescale Embedded Generation from Microchip and Photovoltaics

Prof D G Infield
£130,358 EPSRC

Design and Technology

European Virtual Engineering Network

Dr R I Campbell
£111,913 European Commission

Mechanical and Manufacturing Engineering

Case award

Prof R Parkin
£13,500 Irisys Ltd

Advanced Nozzle Imaging

Dr C Garner
£48,850 Caterpillar Inc

High Resolution 3-d Holographic in Cylinder Velocity Measurements in DI Diesel Engine

Dr C Garner, Prof N A Halliwell and
Dr J Coupland
£256,061 Caterpillar Inc

Tennis Ball Trajectory Testing 2001/02

Dr S Mitchell
£9,600 Penn Racket Sports

Angiography and Magnetic Field Mapping of the Brain using Phase Contrast MRI and Robust 3-d Phase Unwrapping

Prof J M Huntley
£215,925 EPSRC

Physics

Finland Exchange Agreement

Prof F Kusmartsev
£5,600 Royal Society

Study to raise awareness of fraud in business

Small and medium-sized businesses, SME's, have been alerted to the threat of fraud in a study written by Dr Andrew Higson of the University's Business School and published by the Fraud Advisory Panel, with the support of the Institute of Chartered Accountants in England and Wales.

Indications of Fraud in SMEs raises awareness of fraud and points out areas where managers may need to examine or revisit threats to their business. "People usually only think about the dangers of fraud after they have suffered directly from it," says Dr Higson. "This study aims to encourage them to think about the threat of fraud before it happens to them and in doing so learn from others' mistakes."

"Fraud is not always cataclysmic," Dr Higson continues. "The majority of frauds are probably for relatively small amounts and therefore they are difficult to detect. These are costs to the business and so management should be actively trying to control them, just like they would any other cost."

As well as categorising the potential opportunities for fraud, Dr Higson also examines the factors that make SMEs vulnerable to fraud, the impacts of it on an organisation, the impact of culture on an SME's vulnerability to fraud, and how frauds are discovered.

Excellent advice

After reading the study, Nigel Griffiths, Minister for Small Business, said, "In an increasingly complex world this report is an invaluable tool to help small firms 'fraud proof' their business. I would urge every owner-manager of a small business to read it. It contains excellent advice on identifying, counteracting and preventing fraudulent practice in the work place."

Indications of Fraud in SMEs, priced £3.00, is available from the Fraud Advisory Panel, Chartered Accountants' Hall, PO Box 433, Moorgate Place, London EC2P 2BJ, Tel: 020 792 8721.

Assessing gaps in social security and healthcare provision

The Centre for Research in Social Policy (CRSP) has beaten off fierce competition from 110 world-wide organisations to win a commission from the International Social Security Association (ISSA) to assess the gaps in social security and healthcare provision in fifteen countries around the world.

Currently, more than half the world's population is excluded from any type of statutory social security protection, while many others have only very limited cover. The study – which is being led by Dr Simon Roberts, with his research team of Karl Ashworth, Dr Bruce Stafford and Rachel Youngs – will identify which groups are

excluded from social security and healthcare coverage, examine the factors leading to exclusion, and the trajectories and impact of relevant policies and programmes.

Covering Australia, Costa Rica, Czech Republic, Finland, Germany, Hungary, India, Mali, Mexico, Morocco, Tanzania, Thailand, UK, Uruguay and USA, the study will comprise both in-depth country-specific studies and a quantitative comparison of coverage gaps between countries. The findings are likely to have influential consequences for ISSA members and are intended to inform policy-making worldwide. They will be reported to a major international conference in Vancouver, Canada, in September 2002.

VC honoured by Heriot-Watt

The Vice Chancellor, Professor David Wallace, is to receive an honorary degree from Heriot-Watt University in recognition of his distinguished career in academic Physics, in educational leadership, and in public service.

The award, an Honorary Doctorate of Engineering (Hon DEng), will be conferred upon the Vice Chancellor on 9 July. Of this prestigious honour, Professor Wallace said, "I feel very honoured to receive this award. I have been very lucky with the opportunities which have come my way, and am deeply grateful to the support of my family."

Among the others receiving awards from Heriot-Watt are percussionist Evelyn Glennie, composer Sir Peter Maxwell Davies, and triple-jumper Jonathan Edwards.

Race for life

Eleven members of Personnel Services – some fit, some not so fit, but all very enthusiastic! – have entered as a team for the sponsored 5km 'Race for Life' on 28 July in Leicester. Organised by Cancer Research, and promoted by Tesco, it is hoped that the race will raise a national total of £12 million through the one hundred events which are being held throughout the UK. Open only to female runners, the event aims to raise awareness of and generate funds for research into female cancers.

"My mother died of ovarian cancer three years ago, so the cause is obviously very close to my heart," explained Joanne Arno, personnel adviser for Support Services. "I was delighted that so many of my colleagues in Personnel were willing to join me – with only minimal arm twisting required! – and we hope to raise a significant sum for a very worthwhile cause. We're seeking sponsorship from our University colleagues and would welcome expressions of financial support, which we'll follow up once the sponsorship forms have been received." If anyone would like to sponsor Joanne and her colleagues, the email address is J.M.Arno@lboro.ac.uk

Joanne's fellow team members for the race are Elaine Beaken, Sheralyn Bland, Kashmir Bolla, Sue Bruce, Siobhain Clarke, Sandra Jasper, Anne Lamb, Bharti Sharma, Mary Thomas, Heidi Wilkins and Claire Cole (wife of the head of section, Patrick), and anyone who has visited the recently redecorated Personnel section will appreciate that the team name, 'Lilac Lovelies', is very apt!

More information on the Race for Life events is available at www.raceforlife.co.uk

Media Services opens its doors

Audio Visual Services celebrated its name change to Media Services on 12 April with an Open Day for all its customers, who were able to see behind the scenes, get up-to-date with new technologies and talk to staff about the services offered by the organisation.

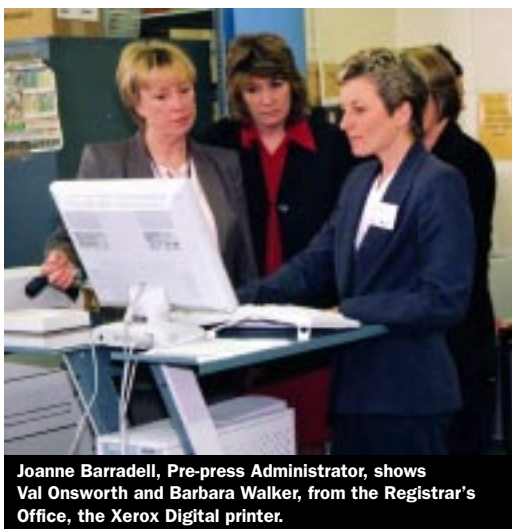
Particularly popular was the 'Digital Imaging' tour, which demonstrated the integration of Media Services. Starting off in the Photography Studio, visitors were photographed with a digital camera, and the image then sent to the neighbouring Design Studio. Here the portraits were superimposed onto one of four campus locations, before being forwarded via the campus network to the Xerox digital colour printer in the Print Services section.

On the Video and Multimedia tour, visitors saw the Towers web cam in action, streaming a live view of campus over the Internet, and the broadcast edit suite which can output video in

a number of computer formats for CD-Rom presentations or the Web.

Over in the Print Services section, in the Manzoni Building, all areas of production were on show, including traditional and digital printing methods and a range of finishing technologies

The Open Day proved to be a great success, with positive feedback from those who attended. "We're keen to give University staff the opportunity to see the services available to them," said design services manager Alison Freer, "and the



Joanne Barradell, Pre-press Administrator, shows Val Onsworth and Barbara Walker, from the Registrar's Office, the Xerox Digital printer.

Open Day has been a very useful way of doing this."

If anyone was unable to attend the day and is interested in finding out more about the services offered, they should contact Alison Freer at A.J.Freer@lboro.ac.uk

Marathon update

Congratulations to PE's Chris Harwood, who successfully completed his third Flora London Marathon this year, in a time of 3:12.17 hours, raising over £1,000 for Cardiac Risk in the Young (CRY). If anyone who sponsored Chris still hasn't paid him, then please contact him on ext 3253 or C.G.Harwood@lboro as soon as possible.

This year's marathon also proved successful for Loughborough graduates Paula Radcliffe and Tanni Grey-Thompson. Paula finished 1st in the women's race, crossing the line in 2:18.56 hours – a time which beat the English qualifying standard for the men's marathon in the Commonwealth Games! Tanni also finished 1st, in the wheelchair women's race, in a time of 2:22.51 hours.

Congratulations to Chris, Paula and Tanni, and to the many other students and staff who took part in the Marathon!



MORE TH>N HOME INSURANCE

SAVE ON AVERAGE

£60

ON YOUR HOME INSURANCE

AND THAT'S JUST THE START

New customers save an average of £60 when switching to MORE TH>N Home Insurance.

But that's just the start. You're also entitled to **20%** discount on your MORE TH>N Home Insurance just for being an employee of Loughborough University.

For your quote and more details on your special MORE TH>N Home Insurance discount

Call **0800 300 822**

quoting **34M0351**

For the latest MORE TH>N discounts on your next Travel and Car Insurance policy, call now and quote SCH314 for Car and 34M0351 for Travel Insurance discounts.

MORE TH>N™

FROM ROYAL & SUNALLIANCE

Lines are open Monday to Saturday 7am-11pm and Sunday 9am-5pm. Calls will be recorded and monitored. Insurance cover is subject to your individual circumstances. Offers apply to new policies only and we reserve the right to withdraw the offers at any time. MORE TH>N is a trading style of Royal & SunAlliance Insurance plc (No. 93792). Registered in England and Wales at St. Mark's Court, Chart Way, Horsham, West Sussex RH12 1XL. Member of the General Insurance Standards Council.

Join the Association of University Teachers

for advice, support, and representation of academic and related staff

Association of University Teachers

THE KEY PROFESSION
serving higher education for over 80 years

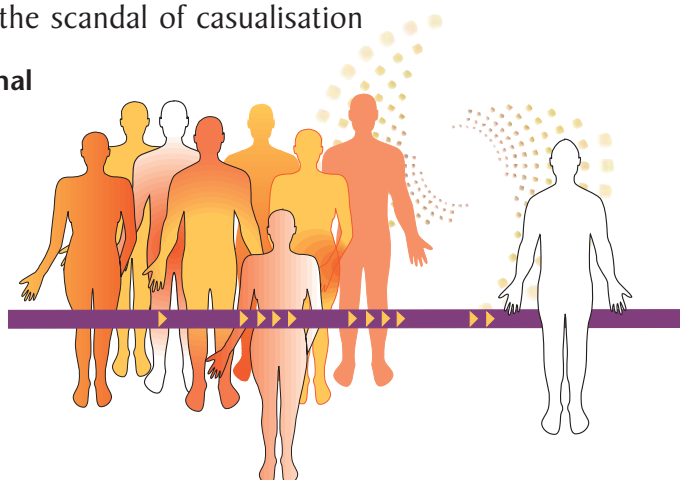
We represent staff in higher education and research establishments. Our members include academics, researchers, administrators, librarians, computer staff, and postgraduate students who teach.

- Help you with the problems you face at work
- Advice on professional and personal issues
- Campaigning for better pay and conditions for staff, and greater investment in higher education
- Working to improve job security and drive out the scandal of casualisation

Combining local knowledge and experience with national support means we can protect jobs, defend standards, and promote the work of the academic community.

Contact your local association:
m.e.newton@lboro.ac.uk
Download a membership form at:
www.aut.org.uk/join
Or contact: membership@aut.org.uk

This advert is sponsored by **FRIZZELL**



Miscellaneous sales

Rowing machine, good condition – £20 ono; Boy's **Mountain Bike**, Y frame, suit age 7-10, vgc – £60 ono; Tel 560281 or email A.Matthews@lboro.ac.uk

Violin, never been used, case included – £55 ono; email F.H.Leahy@lboro.ac.uk

Levi's Jeans 505 red tab comfort/loose fit, 36" waist, 34" leg, not available in the UK, denim blue and black – £25 each; **Reebok Trainers**, brand new, size 11, unwanted present, still in box, black leather/suede finish – £35; email vpwelfare@lborosu.org.uk

Kodak DX3700, brand new, 2160x1440, 3.1 effective pixels, 3x digital zoom lens, 8MB internal memory plus 1.6" LCD colour screen, available Kodak Easyshare camera dock – £190; email trevor0833@hotmail.com

Miscellaneous wants

Good home wanted for 2 great cats (3 and 4 years old). For reasons beyond my control I am forced to give them up. They must go together, alternatively, if anyone can give a home to them for a year (I would pay feeding costs) I would be able to house them in July 2003; Steve, Tel 228313 or email S.J.Summerskill2@lboro.ac.uk

Miscellaneous services

Piano lessons available in central Loughborough with lady teacher, beginners and children welcome; Tel 563281.

Vehicles for sale

Ford 2000 Scorpio Ghia Estate, 1997 'R' reg, silver, MOT Dec, 70k miles, best serviced car ever – £5,000 ono; Tel 230743.

Mitsubishi Lancer 1500 GLX, 1990 'G' reg, 4 door, metallic blue, 100k miles, power steering, all electric sunroof, windows and mirrors, height adjust steering, central locking, MOT, vgc – £700; Tel 556387 or email J.D.De-souza@lboro.ac.uk

Renault 19 RT, 5 door hatchback, 1994 'L' reg, 46k miles, MOT til Jan '03, metallic red, sunroof/full electric pack, alarm/immobiliser, central locking, 1 owner from new, always garaged, well maintained with full service history – £1,800; Lynne, ext 2187 or email L.J.Atkin@lboro.ac.uk

Accommodation for sale/rent

Pembridge Hall, en-suite room available, fully equipped kitchen shared by 7 people, telephone, internet, 7 minutes to University and town centre, available to end of September – £275/

month incl bills (excl phone and internet (£18/month)) – Mr Cheng, Tel 618404 or email C.Yao-01@student.lboro.ac.uk

Loughborough, single room to let on quiet side of Old Ashby Road, large sitting room, kitchen with appliances, dining room, garden, gch, TV, telephone, shower, bathroom, less than 5 minutes walk to University, available June to August – £135/mth incl, £100 deposit; Sam Sun, Tel 07789 200680 or email S.Zhen@lboro.ac.uk

Holiday accommodation

Spain, 2 holiday villas on Costa Blanca to let, one detached, sleeps 4/5 – from £120/wk incl, one terraced, sleeps 2/3 – from £100/wk incl. Both villas have all mod cons and near pools, restaurants etc; Sue, Tel 670737 or email S.Pickaver@lboro.ac.uk

Volunteers wanted

Victim Support – the charitable organisation established to offer emotional and practical support and information to victims of crime – and Glenfield Hospital's Respiratory Clinical Trial Unit are both looking for volunteers.

Victim Support is looking to recruit new volunteers to join its existing teams. "We recruit from all walks of life within the community," explains Loughborough and District deputy branch manager Kathy Small. "Once trained, volunteers either visit people in their own homes or at the local Victim Support office and offer support following a criminal incident. They may just have to listen while the victim describes their experience or advise on increased home security and crime prevention; other volunteers prefer to help by becoming committee members, which is a vital role in the running of the organisation."

There are also teams of volunteers specially trained to support victims and

witnesses of crime who are called to court to give evidence, which can help to prepare them better for their time in the courtroom.

"Volunteers find the work very rewarding, because they feel they're putting something back into the community and also because they know their contribution does make a difference to people's lives," Kathy says, adding, "It would be particularly good to get some volunteers from the University, as this is currently a very underrepresented area within our organisation."

If you would like to become a volunteer, telephone 01509 268545, or call in to see Sallie or Kathy at Victim Support, Regent Wharf, 46 Derby Road, Loughborough.

Glenfield's Respiratory Clinical Trials Unit in Leicester, is looking for non-smoking people with asthma, who would be willing to take part in clinical trials for two new asthma treatments. The first treatment under study is a once-daily tablet, while the second is a twice-weekly nebulised drug. The trials will run until the end of August 2002. Volunteers should be aged between 18 and 65, be in good health (with the exception of asthma), and able to attend Glenfield Hospital for study visits on a weekly or twice-weekly basis. Travelling expenses will be reimbursed, or a taxi provided. Anyone who is interested in taking part should contact former Loughborough student Nicola Sheldon, on 0116 256 3067 or by email at clinical.trials@uhl-tr.nhs.uk

what's on@lboro

A more comprehensive 'What's On' diary is available on the University web site at www.lboro.ac.uk/service/publicity/whatson/

Friday 7 June – Final Year Degree Shows 10am – 5pm

Tuesday 11 June Exhibition of work produced by final year degree students. School of Art and Design, and James France Building. Further information from Sandra Leeland (Art and Design) on 01509 228934 or Sue Green (Design and Technology) on 01509 222652.

Tuesday 11 June Loughborough Enterprise Club 4pm – 6pm

Dewi Hughes of Government Office East Midlands speaks about SMART Awards – what are they and how to apply. Fountain Room, Hazlerigg. Further information from Emma Nadin on 01509 223178.

A Search for Hidden Giants – Travels in Eastern Tibet 1pm

Illustrated slide lecture by John Town, on his recent expedition in search of unknown peaks in the upper reaches of the Po-Yigrong river in Eastern Tibet. Bridgeman Centre Lecture Theatre XX0.19. Further details from Val Onsworth on 01509 222223.

Thursday 13 June Concert by VIVA Sinfonia 7.30pm

A special concert devised by Conductor Nicholas Kok to mark the opening of the Cope Auditorium. Adults £7, students £5, concessions £6 available from the Arts Centre and Box Office, Martin Hall. Further information from Viv Green on 01509 222899.

Thursday 20 June University Open Day 10am – 3pm

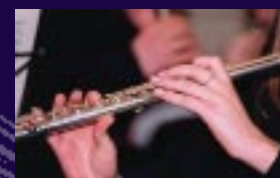
Tours of the campus and Students' Union, lectures, exhibitions and displays. Further information from the Admissions Office on 01509 222498.

Thursday 27 June Bass 5-a-side Football Tournament 10am – 7pm

Four seasons (formerly Bass Breweries) football tournament. Holywell. Further information from Matthew Holden on 01509 228464.

Wednesday 17 July Athletics Development Meeting 1.30pm

Watch British and international stars in action, as they prepare for the Commonwealth Games. Athletics Stadium. Further information from Nick Dakin on 01509 228468.



Manchester 2002: The Commonwealth Games 25 July to 4 August

This year's Commonwealth Games will be the largest ever, and the most significant multi-sport event to be held in this country since the Olympics of 1948, with athletes from 72 nations competing for Gold in fourteen individual sports and three team sports. Team selections are now underway, and at the time of going to press ten current or former Loughborough students had confirmed their places at the Games, including Jodie Swallow who recently retained the British Triathlon Championship. Seven others have also been picked as team coaches and support staff. With selections still to come for athletics and several other sports, Loughborough could potentially boast another fifty competitors at the Games.

Staff and students at the University would like to wish all our athletes and coaches the very best of luck!

Look out for news from the Games in a future edition of news@lboro