

# Community Sport

## Campus facilities available for that 2005 fitness drive

New Year is often the time for kick starting healthy living routines. With many of the University's world-class facilities available for community use, there is plenty to take advantage of.

Facilities for individuals include the Fitness Suite, with an impressive range of exercise equipment and professional staff, and Powerbase which is designed for use by serious trainers. There is also the swimming pool, a range of fitness classes and many courts and pitches for hire.

## Opportunities for clubs

More than 100 local clubs and organisations take advantage of the facilities on campus and there are opportunities across a great many sports and recreational activities.

One club that has found the University's world-class facilities a tremendous boost is Charnwood Athletics Club. They have used the athletics track on campus for much of their 30 year history and access for the public is guaranteed through an agreement between it, the University and Charnwood Borough Council.

Twice weekly training sessions take place at the athletics track. They also take advantage of the High Performance Athletics Centre. Use of the campus facilities means the full range of track and field disciplines can be offered which many other clubs simply cannot do. Thanks to its talented membership and the excellent facilities of the University the club is extremely successful and often features in the top three clubs in the country. Gold medallist at the Athens Paralympic games, Daniel Greaves is a member. It boasts over 350 signed up members but new comers, including those who want to participate on a casual basis, are welcome. For further information about membership contact Rob Seager on 237902.

Another local club with tremendous links with the University is football team Loughborough Dynamo. The current first team squad is a good mix of past and present students as well as local talent and the club, including the youth teams, regularly take advantage of the training facilities the campus offers. The semi professional club is the first Loughborough side to play in the Midland Alliance and is a great success story.

For more information about the opportunities on campus for clubs contact James Ellis, Community Sport Manager on 226125.

## Badminton project

Campus facilities are also being used for an exciting new project aimed at increasing participation in badminton. The Loughborough Sport Badminton Project commenced in September 2004 and will finish in March 2005. Fifty youngsters have been selected to take part in the project which will provide coaching every week. It also involves a series of local schools tournaments for children in years five to 11. Over 500 children from 19 schools are expected to take part in the tournaments. In addition to this a series of badminton 'festivals' will be organised for younger students culminating in a 'Festival Final' in March at the University.

## Coachsteps

Coachsteps is a programme aimed at making a difference to coaching provision in the Borough. There are a whole range of coaching courses available and further details are available from the Coachsteps development officer, Faye Kalchelski on 618098 or by logging on to [www.coachsteps.loucoll.ac.uk](http://www.coachsteps.loucoll.ac.uk)

# What's on

Up-to-date information about what's happening on campus is also available on the University's web site at [www.lboro.ac.uk](http://www.lboro.ac.uk)

## Music

### Chilingirian Quartet

One of the world's most established, celebrated and acclaimed ensembles  
Wednesday 26 January 2005, 7.30pm in the Cope Auditorium  
Adults: £8, Students: £5, Concessions: £7

### The Broadside Band

A performance of popular tunes from 17th century England  
Wednesday 9 February 2005, 7.30pm in the Cope Auditorium  
Adults: £6, Students: £5, Concessions: £6

### National Youth Jazz Orchestra

This outstanding group make a return visit to Loughborough  
Wednesday 23 February 2005, 7.30pm in the Cope Auditorium  
Adults: £8, Students: £6, Concessions: £7

### Piano Recital by South Korean pianist Young-Choon Park

Programme includes music by Mozart, Beethoven and Schubert  
Thursday 3 March 2005, 7.30pm in the Music Centre  
Adults: £7, Students: £6, Concessions: £6

### Ulrich Heinen (cello) & Robert Markham (piano)

Programme includes music by Debussy, Webern, Schumann, Schubert  
Thursday 10 March 2005, 7.30pm in the Music Centre  
Adults: £6, Students: £5, Concessions: £5

### The Charnwood Orchestra

A mix of the familiar and less well-known pieces  
Saturday 12 March 2005, 7.45pm in the Cope Auditorium  
Adults: £6, Concessions: £4, Family ticket (2 adults + 2 children): £15

### Concert by the University Choir

John Rutter: Requiem, Elgar: The Music Makers  
Monday 14 March 2005, 7.30pm in the Music Centre  
Adults: £3, Students: £3, Concessions: £3



## Theatre

### Angika - leading British Indian dance company in BHAKTI

A powerful and imaginative interpretation of the beauty of devotion  
Wednesday 16 March 2005, 7.30pm in the Sir Robert Martin Theatre  
Adults: £6, Students: £5, Concessions: £5

## Poetry

### Poetry Evening

A performance of poetry currently on a national tour  
Tuesday 1 March 2005, 7.30pm in the Martin Hall Bistro

Ticket information for all the music, theatre and poetry events listed above is available from the Arts Centre, T: 222899.

## Public Lectures

### GaWC Annual Public Lecture: 'London as a world city'

Professor Alan Freeman, Chief Economist of the Greater London Authority  
Monday 10 January 2005, 3.00pm - 3.50pm in the Cope Auditorium.  
For details contact Professor Jon Beaverstock on 223093.

## Royal Aeronautical Society Public Lectures

Flight Testing - Chipmunk to Concorde  
Tuesday 25 January 2005, 7.30pm in Brockington Extension, Room U.0.20

### Apache Helicopter

Tuesday 15 February, 7.30pm in Brockington Extension, Room U.0.20

### Air-to-air Refuelling

Tuesday 1 March, 7.30pm in Brockington Extension, Room U.0.20

### Designing Engines for the Real World

Tuesday 15 March 2005, 7.30pm in Brockington Extension, Room U.0.20  
Further details on Royal Aeronautical Society lectures from Goff Tearle T: 227260.

### Chaplaincy Annual Lecture

Given by Professor John Hull  
Thursday 10 March 2005, 7.00pm in the Sir Robert Martin Theatre

### Ten Years After the Uruguay Round: evolution in EU trade policy

Steve McGuire (Bath) will deliver this brief presentation, which will be followed by a Q&A session  
Wednesday 9 February 2005, 3.00pm - 4.30pm in Room A.2.04, Schofield

### Art and Politics

Prof Alex Danchev, Nottingham University, will give a brief Research Seminar Series presentation, which will be followed by a Q&A session  
Wednesday 23 February 2005, 3.00pm - 4.30pm in Room A.2.04, Schofield

### Europeanization and British Politics

Ian Bache (Sheffield University) will give a brief Research Seminar Series presentation, which will be followed by a Q&A session  
Wednesday 2 March 2005, 3.00pm - 4.30pm in Room A.2.04, Schofield  
Further details on the above three presentations from Prof Dave Allen on 222983.

## Sport

### Girls in Sport

Wednesday 19 January 2005, Badminton and Netball Centre

### Youth Trust Zone Parc

Introducing children to sporting activities  
Thursday 3 March 2005. For more information: [www.youthsporttrust.org](http://www.youthsporttrust.org)

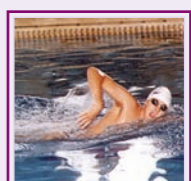
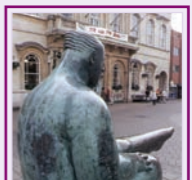
### National Children's Home - human table football event

Sunday 6 March 2005. For more information T: 226122

### Step into Sport

Community Volunteers Award run through local schools  
Monday 21 March 2005 - Thursday 24 March 2005  
For more information: [www.youthsporttrust.org](http://www.youthsporttrust.org)

University News is published three times a year for the information of local residents. Edited by Alison Barlow, Publicity Office T: 228696 E: [A.J.Barlow@lboro.ac.uk](mailto:A.J.Barlow@lboro.ac.uk)  
Design and layout by Helen McCullam, Publicity Office. Printed by Hickling & Squires  
All information correct at the time of going to press.



# university news

For Loughborough Residents



Winter 2004-05 Issue No 9

## Inside this issue:



On campus development - the latest news



Conference looks at students, housing and the community



On the look out for Woodland friends

[www.lboro.ac.uk](http://www.lboro.ac.uk)

Loughborough University

# University Strategic Review

At its meeting on 29 October 2004, the Council of Loughborough University considered a progress report on the extensive Strategic Review which commenced in April this year. The review is considering the University's aspirations for the next 10 to 20 years, and the first stage has now been completed.

As part of the first stage, the views of staff and students have been sought. During the next stage the University will be talking to a range of individuals, groups and organisations representing the wider community in which the University exists.

The Review is intended to consolidate the University's position as a top ten institution and to enhance its status as a leading research-led university. It will look at how the University should best organise and develop its research and teaching, and its business partnerships and commercial activities.

One part of the review is looking at how all the land owned by the University can best support current and future activities. The University is already involved in an ongoing process of developing its estate to meet long term needs; for example it has recently submitted an outline planning application as part of its residential strategy.

The University is also aware of, and welcomes, the aspirations of external groups, including the East Midlands Development Agency, Leicestershire County Council and Charnwood Borough Council, to see the development of a second Science Park within Loughborough. Any such project would require interested parties to work in partnership together and the University would wish to be actively involved in such a group.

Professor Phil Roberts, Deputy Vice Chancellor, said: "The University is optimistic about the future, and there are many opportunities to continue the remarkable progress of recent years. The review is already helping to guide thinking about these long term future developments.

"We must pursue excellence in all our activities. In addition to our important national and international role, we want to make a major and positive contribution, culturally and economically, to Loughborough and this region and to maximise the public benefit of our work.

"Aiming for excellence does not, or course, necessarily mean increases in undergraduate student numbers, and I'd like to reiterate that we have already taken steps to restrict our recruitment of UK undergraduates."



# On campus development

- the latest news



Artists impression of Burleigh Court.

## East Park

In recent months the University has been considering the future of part of the campus known as the East Park. This part of the estate, which includes the landmark Towers building, was largely built in the 1960's. Today many of the buildings do not meet the current needs of the University and are costly to run and maintain. Proposals have therefore been developed which would see this part of the campus transformed over the next 10-20 years. It is believed that more sustainable buildings could be provided during such a redevelopment.

Under the proposals four new 'zones' would be created - residential, academic, cultural and leisure. It would provide approximately 5,500 sq.m of new academic space, up to 450 new student bedrooms (included in the on campus accommodation plans) and a small multi-storey car park. The buildings would range in height from three to five storeys. Those nearest the boundary and the University's near neighbours would be three storey, whilst the five storey buildings and the accommodation would be positioned away from the boundary in the central part of the new area.

Initial proposals have been submitted to Charnwood Borough Council and a consultation meeting has been held with the residents living closest to this part of the campus. There will be formal consultations through the Borough Council in the early part of 2005. Detailed schemes for any part of the new East Park would then be submitted for planning approval in the normal way.

## On campus student accommodation

An outline planning application was submitted to Charnwood Borough Council in October and preliminary discussions with planning officers have commenced. Further updates will be included in future editions of University News.

## Burleigh Court

An extension to Burleigh Court is listed as one of the on campus accommodation projects and a full planning application has already been submitted to the Borough Council.

Burleigh Court is the University's conference and training centre. It currently has its own bedrooms but also uses rooms in the adjacent David Collett hall of residence. The extension will provide additional bedrooms for Burleigh Court thereby allowing the rooms in David Collett to be used as student accommodation again.

It has been possible to take this project forward quickly as plans for an extension were originally drawn up two years ago. Whilst planning permission was obtained at that time the University decided not to proceed with the project.

The planning application that is now with the Borough for consideration is broadly similar to the original scheme but a little larger in scale. Local residents living nearby to Burleigh Court have attended meetings with the University regarding the proposals.

## Other University Developments

The University has also submitted a planning application for a new Post Graduate Centre. This building will be situated within the campus in an area close to Burleigh Court. It will be a two storey building of some 1200 sq metres, providing lecture rooms and a small suite of offices.

Plans are also underway for an extension to replace porta cabins that currently provide a home for part of the Civil Engineering Department.

## Conference looks at students, housing and the community

Representatives from Loughborough University, Charnwood Borough Council and a residents' group made a trip to Leeds during October to attend a national conference looking at students, housing and the community.

The conference aimed to explore the effects of growing residential concentrations of students, examine ways of responding positively to these pressures and achieving results. It brought together politicians, educational administrators, students, local authority staff and community activists with the aim of promoting the exchange of ideas and building on best practice.

There were short plenary sessions followed by workshops based around the themes of regeneration, the University effect, sustaining the community and managing the community. Particular topics and issues considered were planning laws, housing regulations and the new Housing Bill, fly posting and waste. A number of case studies on particular towns were presented including Leeds and Ulster. Loughborough was also invited to present a workshop and this was jointly undertaken by John Town from the University, Jonathan Hale from Charnwood Borough Council and Stuart Mitchell from the Storer Area Residents Group. This combined approach was unique on the day and was well received.

Alison Barlow, Community Relations Officer at Loughborough University, was part of the Loughborough contingent. She comments: "Everyone who attended from Loughborough found the conference interesting. It certainly gave me food for thought for approaches the University might consider."

## Walk back by popular demand

Residents are being offered the opportunity for an insight into the history and present day operation of the University through guided walks around campus.

Approximately 2 miles in distance, the walks will take in some of the oldest parts of the campus as well as many of the state-of-the-art modern buildings.

It will take two and a half hours to complete and is most suitable for those who regularly walk, although the less able and wheelchair users can be accommodated.

Some of the locations to be visited include sporting facilities, Hazlerigg Hall and other parts of the student village, the Memorial Garden, Library and academic buildings.

The walk, which is free of charge, will be lead by Ernie Miller, a former member of staff.

No booking is required.

**Dates:** Saturday 19 February 2005  
Saturday 27 February 2005

**Time:** 1.30pm

**Meet:** Security Gatehouse

**Parking:** Swimming pool

For further information: Alison Barlow, Community Relations Officer - T: 228696.

# Can you be a woodland friend?

The University is on the look out for local people to act as its eyes and ears to help it protect a valuable area of ancient woodland.

Burleigh Wood, near Nanpantan, was acquired by the University in April 2003 as part of the purchase of Holywell Park from Advantica Technologies Ltd. To look after its new assets, the University established a Woodland Review Group. Made up of wildlife experts, representatives from its Estates Services and volunteers, the group developed a programme of management activity for the wood which is into its second year. The University is now hoping to establish an informal network of 'friends of Burleigh Wood'.

Managing the woodland effectively doesn't involve work every day or even every month and so for periods of time the woodland is not visited by University personnel. A 'friend' would simply need to keep their eyes and ears open and alert the University if any action or work was required. This could be notification of a dangerous tree, overgrown path or some vandalism or dumped rubbish. Without such assistance from local people the University might not be aware of a problem for a period of time.

Dave Burgess, Chairman of the Woodland Management Group comments: "Burleigh Wood is officially open to the public and we know that it is well loved and well used by local people. We'd be really grateful if they would consider becoming a 'friend' and help us to protect and maintain this valuable amenity and wildlife habitat."

For residents wanting to get more actively involved in looking after Burleigh wood management activity is regularly planned by Charnwood Conservation Volunteers. New volunteers are welcome and anyone interested should contact 264714 for more information.

The University is also on the look out for anyone interested in sponsoring new nest boxes in the wood. Many of the existing boxes have fallen into disrepair and now need replacing.

Anyone acting as a 'friend' and wanting to make a report to the University should do so by phoning Dave Burgess on 222117.

Anyone interested in supporting the nest boxes should also contact Dave.



Dave Burgess, Chairman (left) and other members of the Woodland Management Group.

## Useful Contact Information

Security	222141 (24hrs)
Alison Barlow, Community Relations Officer	228696
Adrian Bailey, Community Warden	563263