

## Section 3 Academic library statistics

### Introduction

This section is concerned with libraries in universities and other institutions of higher education - the sector generally meant when 'academic' libraries are mentioned. Libraries in colleges of further education and in schools do not provide comprehensive management data to a central source on a regular basis at present, and little can be included in this volume. The bibliography includes details of research reports carried out in these sectors in recent years.

Figures are presented separately for three main institutional groupings:

- 'old' universities – those already incorporated prior to 1992, and originally funded by the Universities Grants Commission. These include the group of universities founded in the early 1960s as well as the longer established institutions, and the Open University.
- 'new' universities – former polytechnics and other institutions which were incorporated as universities in 1992 or subsequently. This group is growing as some of the larger HE colleges are becoming universities – three new universities were included in this group for 2003-04, and a further three for 2004-05.
- 'HE' colleges – other institutions funded by the HE funding councils in the UK, but which are not formally incorporated as universities. These are a particularly diverse set of institutions, ranging from large colleges with a wide range of access and undergraduate programmes to small specialist institutions offering largely postgraduate study.

The overall total for the UK is also given. Libraries in independent institutions (e.g. the University of Buckingham) are not included.

### Sources of statistics

In parallel with the organisation changes in the sector, the agencies responsible for collecting data have also changed. In 2000 the Standing Conference of National and University Librarians (SCONUL) and the HE Colleges Learning Resources Group (HCLRG) merged to form a single body to represent Higher Education libraries – the Society of College, National and University Librarians (SCONUL). A single data collection exercise ensued, based on the original SCONUL returns and encompassing the vast majority of UK HE libraries. The merger led LISU to re-examine its databases of academic library statistics, creating a single set of data applicable to all HE libraries, derived from the separate sets of returns received. Data specifically applicable to libraries in this section of the report are drawn from this database.

SCONUL's annual data collection exercise is overseen by a Working Group on Performance Improvement, which regularly reviews and updates the information collected. Recent developments have included collecting extended data on the provision and use of electronic materials, to assess the impact of changing technologies on academic libraries. Relevant figures will be incorporated into this report as and when sufficiently complete and reliable data become available. Readers who require further information on the detailed definitions used by SCONUL should consult their website, where a sample return and set of definitions are available ([http://www.sconul.ac.uk/pubs\\_stats/statques.html](http://www.sconul.ac.uk/pubs_stats/statques.html)). The original data are published in the SCONUL and HCLRG *Annual Statistics* volumes (see *Bibliography*, pages 190-196).

Some institution level data are included, drawn from that supplied to the Higher Education Statistics Agency (HESA), which collects a great deal of information about higher education institutions, but little detail on their libraries. However, their figures on numbers of FTE students and academic staff, and overall institutional expenditure are comprehensive, and have been used for some tables in this report. Additionally, the data on numbers of FTE students have been used to gross up the LISU/SCONUL database figures to allow for non members (*see below*).

## FTE students

The population divisor for academic library indicators is the number of FTE students. These figures are obtained from HESA, in order to be comparable and consistent between institutions. Readers are referred to the Higher Education Library Management Statistics, or HESA's own volumes, for details of how these figures are obtained (*see Bibliography*).

Up to 2003-04, the figures comprised three elements: students on higher education level programmes; students on further education level programmes; and students on non-credit bearing courses. In 2004-05, HESA changed the way in which the data were collected, and no count was included of students on non-credit bearing courses. The proportion of such students varies from year to year, and between institutions. Based on the most recent years, it seems likely that the effect of this change will have been to artificially reduce the total number of FTE students by around 3% overall, and hence inflate the percentage changes by some three percentage points, on average. In a sector where changes in the per capita ratios are generally small, such changes have a significant impact on the trends, so the detailed percentage increases have not been reported in the tables this year. Comment on changes over the most recent year in ratios per FTE student has been included in the commentary, making allowance for the change in definitions.

## Estimation for missing data

The majority of HE institutions are members of SCONUL and so complete the appropriate annual statistical returns. Some HE colleges which are not members also habitually make returns. These returns give a great deal of information about individual libraries, and make this section of our report possible. To create the LISU database, each institution is considered separately, using all available information to correct for data which do not conform to the standard definitions, or which are not available. As each new year's data are added, the previous figures are checked for consistency, and any apparent discrepancies checked with the institutions concerned. The reasonableness of previous estimates is also examined, and adjustments made if necessary. This may result in changes to the detail of the figures presented here compared to those in previous editions.

However, there remains a considerable degree of estimation in some areas; in particular coverage of the HCLRG returns was poor in the first years. Where this is thought to have a potentially significant effect on any of the tables, it has been indicated in the accompanying commentary.

The SCONUL and HCLRG databases are completed for all members of the two groups, as described above. However, membership is not compulsory, although SCONUL now covers 99.5% of students (FTE) in UK higher education. We aim in this report to produce data which relate to the whole of the sector in each year, and so facilitate the examination of trends in activity levels. In order to achieve this, it is necessary to allow for those institutions

which are not included in the reported statistics. This is done by adding in a percentage to the reported totals, based on the proportion of total students in the non-member institutions. All new universities have been SCONUL members throughout the period covered here, and no further grossing up is therefore required for this sector. In 2004-05, just eight UK HE institutions were not members of SCONUL or had never completed a return. These are six HE colleges, and two London medical schools. The grossing up factors applied for each year are as follows:

	Old universities	HE colleges
1994-95	+ 1.7%	+ 22%
1995-96	+ 1.3%	+ 19%
1996-97	+ 1.3%	+ 16%
1997-98	+ 0.8%	+ 15%
1998-99	+ 0.4%	+ 5%
1999-00	+ 0.4%	+ 12%
2000-01	+ 0.3%	+ 9%
2001-02	+ 0.3%	+ 9%
2002-03	+ 0.1%	+ 3%
2003-04	+ 0.1%	+ 4%
2004-05	+ 0.1%	+ 5%

## Order of the tables

This section is presented in the following format:

- **Summary of key trends** – overall summary statistics for each of the three sectors (*Tables 3a-3c, pages 122-127*)
- **Client base** – figures on the numbers of libraries and numbers of users (*Table 3.1-3.2, pages 128-129*)
- **Overall financial figures** – expenditure and income (*Tables 3.3-3.5, pages 130-133*)
- **Resources** – Information provision expenditure, stock and issues (*Tables 3.6-3.14, pages 134-145*)
- **Staffing** – staff numbers and expenditure (*Tables 3.15-3.16, pages 146-147*)
- **The user experience** – opening hours, seating and levels of use (*Tables 3.17-3.21, pages 148-153*)

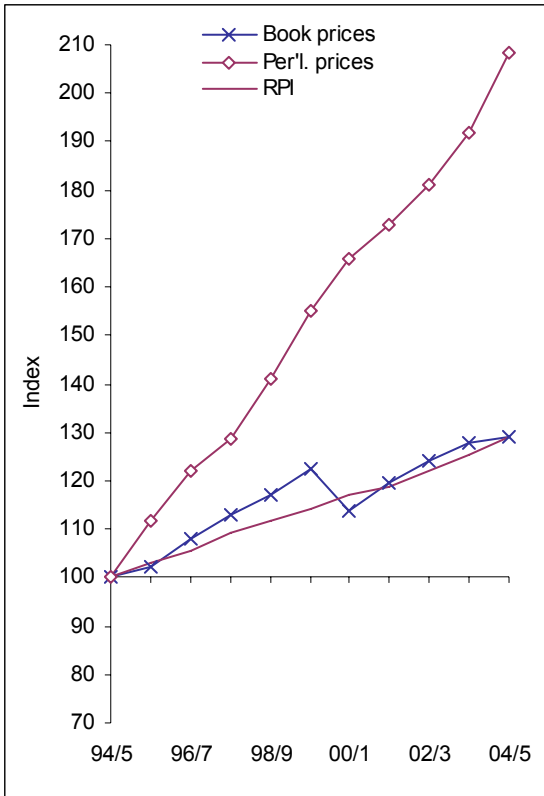
Note that in the main tables for this section, the percentage changes over one, five and ten years have been calculated on the full data, before rounding. They may therefore differ slightly from changes calculated from the printed figures which have in most cases been rounded for presentation.

## Tables 3a–3c Summary of key trends

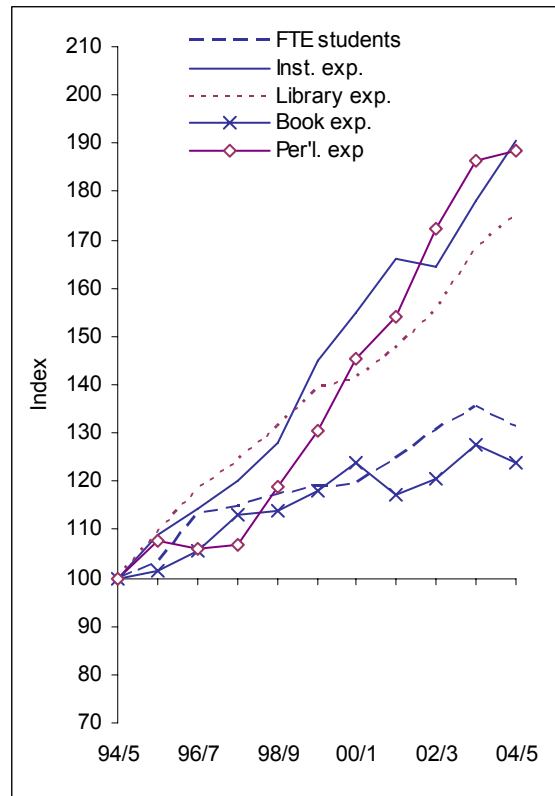
Fig 3.1 summarises the key trends in academic library expenditure over the last ten years; relevant price indexes are also presented for comparison. There are clear differences between the sectors, most notably in relation to book expenditure. Tables 3a–3c present an overview of the key trends for the three sectors separately, each with a short commentary on the data.

**Fig 3.1 Indexes of expenditure**

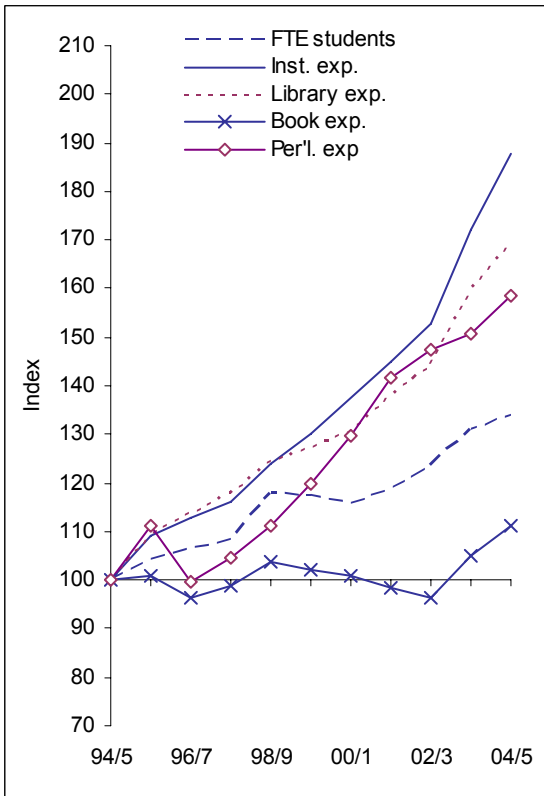
a) Price indexes



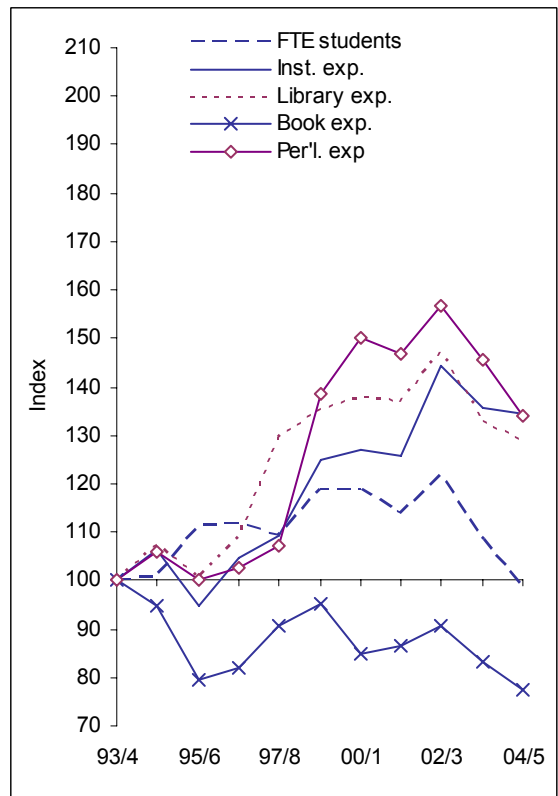
b) Old universities



c) New universities



d) HE colleges



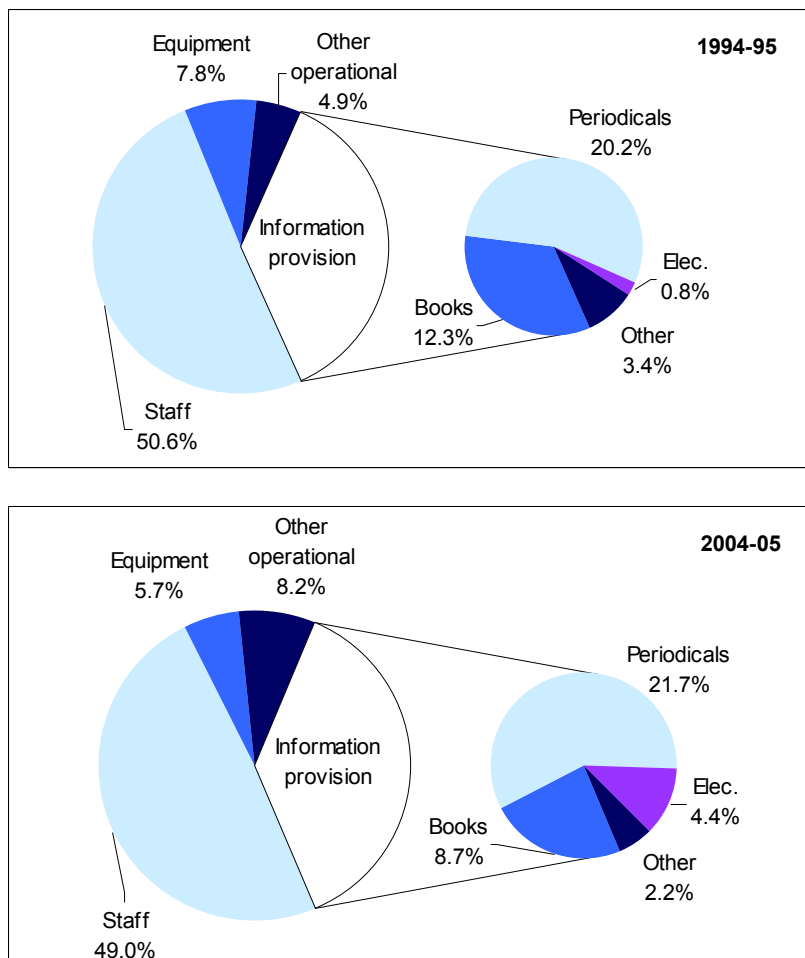
## Old universities

The old university sector comprises all those HE institutions which were incorporated as universities before 1992, and were originally funded by the Universities Grants Commission. The changes in the number of institutions therefore reflect changes in administration and organisation, rather than changes in the actual institutions included. In 2004-05, the Victoria University of Manchester merged with UMIST, and the University of Wales College of Medicine merged with Cardiff University, to reduce the total number of institutions by two.

In this sector, the effect of removing the non-credit bearing students from the count of FTE students is to be greater than average, at around 4.5%, leading to an apparent fall in total student numbers. Excluding non-credit bearing students from the 2003-04 figures gives an increase of 1.1% in FTE students in 2004-05.

This is the largest of the three sectors, accounting for almost half of all FTE students, and 62% of total academic library expenditure. Expenditure in total has kept pace with inflation rather better in the old universities than the other sectors, which may be a reflection of the greater stability of this sector. Fig 3.2 illustrates the breakdown of expenditure in this sector for 1994-95 and 2004-05. Key changes over the period have been the fall in the proportion of expenditure on equipment, and the increase in the proportion on electronic resources.

**Fig 3.2 Breakdown of library expenditure – Old universities**



**Table 3a Summary statistics for old universities**

		1994-95	1995-96	1996-97	1997-98	1998-99	1999-00	2000-01	2001-02	2002-03	2003-04	2004-05
No of institutions		75	72	72	69	67	67	67	67	68	68	66
FTE students	('000)	629	650	712	722	736	747	750	785	821	852	824
FTE academic staff	('000)	65	70	71	71	73	77	79	82	84	81	87
No of libraries		340	350	390	400	400	450	450	530	540	540	540
Professional librarians	(FTE)	1,830	2,010	1,800	1,830	1,840	1,890	1,920	1,900	1,940	2,050	2,000
Students per professional librarian		344	323	396	395	400	395	390	413	423	415	412
Total institutional expenditure	(£m)	6,235	6,799	7,132	7,491	7,790	8,368	8,981	9,631	10,260	11,116	11,891
Total library expenditure	(£m)	184	202	219	229	242	256	261	272	286	310	323
<i>Proportion of total on library</i>		3.0%	3.0%	3.1%	3.1%	3.0%	2.8%	2.7%	2.6%	2.8%	2.8%	2.7%
Staff expenditure	(£m)	93	101	109	114	120	128	129	135	140	150	158
<i>Proportion of total</i>		50.6%	50.1%	50.0%	49.9%	49.8%	49.7%	49.7%	49.5%	49.1%	48.3%	49.0%
Information provision expenditure	(£m)	68	72	77	81	85	94	99	103	111	119	120
<i>Proportion of total</i>		36.8%	35.8%	35.2%	35.1%	35.3%	36.6%	38.0%	38.0%	38.6%	38.3%	37.1%
Equipment expenditure	(£m)	14	16	18	20	20	20	17	15	16	22	18
<i>Proportion of total</i>		7.8%	7.7%	8.3%	8.5%	8.2%	7.7%	6.4%	5.6%	5.6%	7.1%	5.7%
Other expenditure	(£m)	9	13	14	15	16	18	17	19	20	20	26
<i>Proportion of total</i>		4.9%	6.4%	6.5%	6.5%	6.7%	7.0%	6.4%	6.9%	6.8%	6.3%	8.2%
Book spend	(£m)	22.8	23.1	24.1	25.7	25.9	26.9	28.2	26.7	27.4	29.1	28.2
Book spend per FTE student	(£)	36	36	34	36	35	36	38	34	33	34	34
Real book spend per FTE student <sup>(1)</sup>	(2004 £)	47	45	40	41	39	38	42	37	35	34	34
Periodical spend	(£m)	37.2	40.1	39.5	39.8	44.3	48.5	54.2	57.3	64.2	69.4	70.2
Periodical spend per FTE student	(£)	59	62	56	55	60	65	72	73	78	82	85
Real periodical spend per FTE student <sup>(2)</sup>	(2004 £)	123	115	95	89	89	87	91	88	90	89	85
Annual loans	(m)	30.0	31.4	33.8	35.6	37.0	37.5	39.0	41.5	44.2	48.0	47.9
Loans per FTE student		48	48	48	49	50	50	52	53	54	56	58
Annual visits	(m)	53.7	55.0	55.8	59.5	61.0	61.9	60.6	59.4	59.6	64.1	64.4
Visits per FTE student		85	85	78	82	83	83	81	76	73	75	78

<sup>(1)</sup> Adjusted using LISU index of academic book prices - Table 5.3a, page 172

<sup>(2)</sup> Adjusted by composite periodical price index - Table 5.4, page 174

## New universities

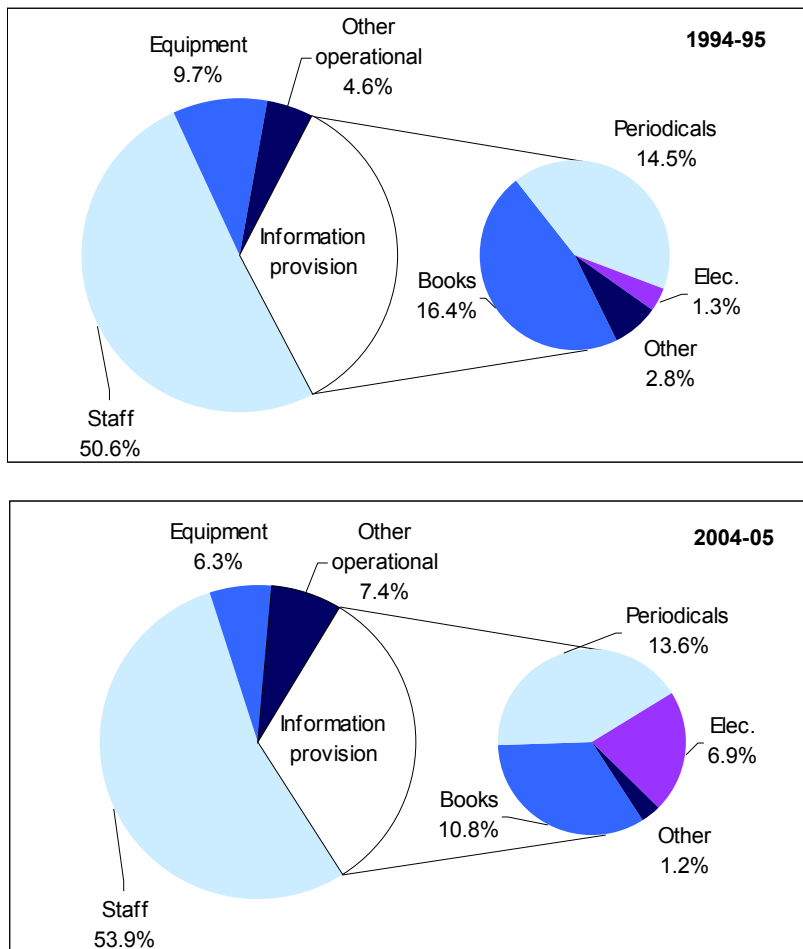
The new university sector has been less affected by mergers than the old universities, and the growth in student numbers has been less pronounced. However, the incorporation of a further three former HE colleges as universities this year has led to expansion of the sector.

The effect of removing non-credit bearing students from the count of FTE students is less pronounced than in the old university sector, with around 2% of total FTE students in 2003-04 being on non-credit bearing courses.

Despite the increase in the number of institutions in the sector this year, there has been no increase in the total number of library service points operated.

New universities spend a slightly higher proportion of their overall budgets on their libraries than do old universities, and the way this is broken down is illustrated in Fig 3.3, comparing 2004-05 with the position ten years ago. The changes are similar to those in old universities, with proportionately less being spent on equipment and books, and more on electronic resources in 2004-05 than in 1994-95. The proportion spent on staff has also increased in this sector.

**Fig 3.3 Breakdown of library expenditure – New universities**



**Table 3b Summary statistics for new universities**

	1994-95	1995-96	1996-97	1997-98	1998-99	1999-00	2000-01	2001-02	2002-03	2003-04	2004-05	
No of institutions		42	42	42	42	42	42	43	42	45	48	
FTE students	('000)	517	540	551	561	610	607	599	614	639	678	693
FTE academic staff	('000)	30	32	31	31	32	33	33	33	34	34	37
No of libraries		204	222	250	243	223	218	211	214	209	217	216
Professional librarians	(FTE)	1,113	1,159	1,198	1,221	1,249	1,255	1,247	1,278	1,261	1,325	1,404
Students per professional librarian		465	466	460	459	488	483	481	480	507	512	493
Total institutional expenditure	(£m)	2,534	2,767	2,862	2,942	3,154	3,298	3,486	3,671	3,872	4,362	4,752
Total library expenditure	(£m)	96	104	109	113	119	122	125	132	138	153	162
<i>Proportion of total on library</i>		3.8%	3.8%	3.8%	3.8%	3.8%	3.7%	3.6%	3.6%	3.6%	3.5%	3.4%
Staff expenditure	(£m)	48	54	56	58	60	64	66	70	75	82	87
<i>Proportion of total</i>		50.6%	51.4%	51.8%	51.9%	50.8%	52.8%	53.0%	52.8%	54.5%	53.8%	53.9%
Information provision expenditure	(£m)	33	36	37	38	40	41	42	44	45	49	52
<i>Proportion of total</i>		35.0%	34.1%	33.8%	34.0%	34.0%	33.9%	33.8%	33.2%	32.6%	32.0%	32.4%
Equipment expenditure	(£m)	9	9	10	10	11	9	9	9	8	11	10
<i>Proportion of total</i>		9.7%	8.3%	9.3%	8.7%	9.2%	7.5%	7.1%	6.8%	5.9%	7.3%	6.3%
Other expenditure	(£m)	4	7	6	7	7	8	8	10	10	11	12
<i>Proportion of total</i>		4.6%	6.3%	5.3%	5.9%	6.2%	6.2%	6.3%	7.2%	7.4%	6.9%	7.4%
Book spend	(£m)	15.7	15.9	15.1	15.5	16.3	16.1	15.8	15.5	15.1	16.5	17.5
Book spend per FTE student	(£)	30	29	27	28	27	27	26	25	24	24	25
Real book spend per FTE student <sup>(1)</sup>	(2004 £)	39	37	33	32	29	28	30	27	25	25	25
Periodical spend	(£m)	13.9	15.4	13.8	14.5	15.4	16.6	18.0	19.6	20.4	20.9	22.0
Periodical spend per FTE student	(£)	27	29	25	26	25	27	30	32	32	31	32
Real periodical spend per FTE student <sup>(2)</sup>	(2004 £)	56	53	43	42	37	37	38	39	37	33	32
Annual loans	(m)	25.0	26.6	29.7	30.2	31.5	30.9	30.5	32.8	34.1	36.2	38.8
Loans per FTE student		48	49	54	54	52	51	51	53	53	53	56
Annual visits	(m)	38.8	41.0	44.5	44.9	45.5	43.2	43.2	43.2	43.8	45.4	46.1
Visits per FTE student		75	76	81	80	75	71	72	70	69	67	67

<sup>(1)</sup> Adjusted using LISU index of academic book prices - Table 5.3a, page 172

<sup>(2)</sup> Adjusted by composite periodical price index - Table 5.4, page 174

## HE colleges

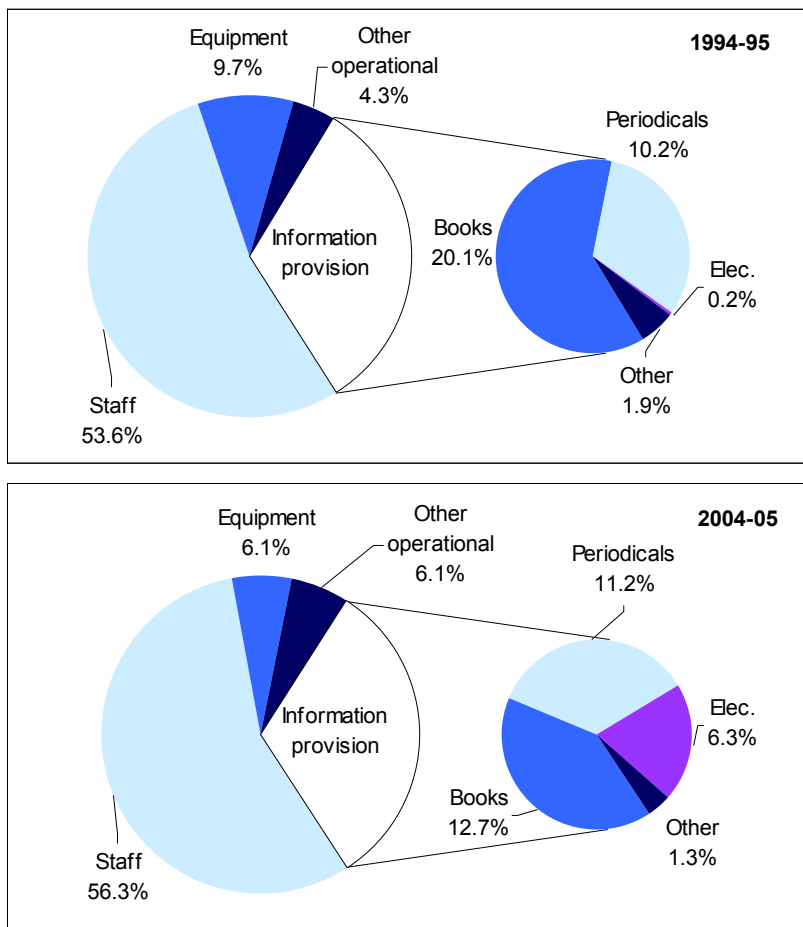
The HE colleges include all non-university institutions funded by the HEFCs in the UK, and include both large general colleges and smaller specialist institutions. They are a particularly diverse group, and performance in any individual college may differ dramatically from the overall picture presented here. There are four fewer colleges this year than last, as three have become universities and two have merged; more are set to move into the new university sector next year. There are fewer multi-campus institutions than in the university sectors and this is the smallest sector, now accounting for just 10% of UK HE students (FTE).

This sector shows the least effect when non-credit bearing students are removed from the count of FTEs, as such students represented just 1.6% of the total in 2003-04.

Note that there is a considerable degree of estimation required in this sector, particularly in the early years included here. Several HE colleges who had been members of HCLRG did not join SCONUL when the organisations merged, and although some have continued to supply data on a regular basis, others have not done so consistently.

Fig 3.4 illustrates the breakdown of expenditure in this sector for 1994-95 and 2004-05. A greater proportion of total expenditure is on staff than in the university sectors, and this has increased, in common with the new university sector. There has been a dramatic increase in the proportion of expenditure on electronic resources in common with other sectors; unlike those, however, HE colleges continue to spend more on books than on periodicals.

**Fig 3.4 Breakdown of library expenditure – HE colleges**



**Table 3c Summary statistics for HE colleges**

	1994-95	1995-96	1996-97	1997-98	1998-99	1999-00	2000-01	2001-02	2002-03	2003-04	2004-05
No of institutions	65	66	63	63	60	60	57	60	60	57	53
FTE students	( <i>'000</i> ) 164	165	182	183	179	195	194	187	200	178	161
FTE academic staff	( <i>'000</i> ) 10	11	10	10	9	10	10	10	10	8	9
No of libraries	100	100	90	90	100	110	130	120	110	100	90
Professional librarians	( <i>FTE</i> ) 430	430	420	430	510	510	450	450	450	400	350
Students per professional librarian	381	384	434	426	351	382	432	415	444	444	460
Total institutional expenditure	( <i>£m</i> ) 840	892	798	878	974	1,038	1,071	1,117	1,213	1,141	1,129
Total library expenditure	( <i>£m</i> ) 28	30	28	30	36	37	38	38	41	37	36
<i>Proportion of total on library</i>	3.3%	3.3%	3.5%	3.4%	3.9%	3.6%	3.6%	3.6%	3.4%	3.2%	3.2%
Staff expenditure	( <i>£m</i> ) 15.3	16.0	15.2	16.5	20.5	21.4	21.6	21.9	23.7	21.2	19.6
<i>Proportion of total</i>	55.1%	53.9%	54.6%	54.7%	57.0%	57.1%	56.6%	57.5%	58.1%	57.6%	55.1%
Information provision expenditure	( <i>£m</i> ) 9.2	9.2	8.6	8.9	10.4	11.7	11.6	11.4	12.3	11.8	11.0
<i>Proportion of total</i>	33.3%	30.9%	31.0%	29.6%	29.0%	31.2%	30.4%	30.0%	30.2%	31.9%	30.9%
Equipment expenditure	( <i>£m</i> ) 2.8	3.0	2.5	2.9	3.5	3.5	2.5	2.5	3.0	1.9	2.1
<i>Proportion of total</i>	10.0%	10.0%	8.8%	9.8%	9.7%	9.4%	6.6%	6.7%	7.3%	5.0%	5.9%
Other expenditure	( <i>£m</i> ) 1.2	1.6	1.6	1.8	1.6	1.4	2.2	2.2	2.1	2.0	2.1
<i>Proportion of total</i>	4.4%	5.2%	5.6%	5.9%	4.4%	3.8%	5.8%	5.8%	5.2%	5.4%	6.0%
Book spend	( <i>£m</i> ) 5.7	5.4	4.6	4.7	5.2	5.5	4.9	5.0	5.2	4.8	4.4
Book spend per FTE student	( <i>£</i> ) 35	33	25	26	29	28	25	27	26	27	28
Real book spend per FTE student <sup>(1)</sup>	( <i>2004 £</i> ) 45	42	30	29	32	30	28	29	27	27	28
Periodical spend	( <i>£m</i> ) 2.9	3.1	2.9	3.0	3.1	4.0	4.4	4.3	4.5	4.2	3.9
Periodical spend per FTE student	( <i>£</i> ) 18	19	16	16	17	21	22	23	23	24	24
Real periodical spend per FTE student <sup>(2)</sup>	( <i>2004 £</i> ) 37	35	27	26	26	28	28	28	26	26	24
Annual loans	( <i>m</i> ) 7.9	8.1	8.7	9.3	9.3	10.2	10.1	9.6	10.2	9.3	8.3
Loans per FTE student	48	49	48	51	52	53	52	51	51	52	52
Annual visits	( <i>m</i> ) 13.2	12.6	13.2	13.8	13.9	15.2	15.4	14.8	15.1	13.9	11.8
Visits per FTE student	81	76	72	75	78	78	79	80	76	78	74

<sup>(1)</sup> Adjusted using LISU index of academic book prices - Table 5.3a, page 172

<sup>(2)</sup> Adjusted by composite periodical price index - Table 5.4, page 174

## Tables 3.1 and 3.2 Client base

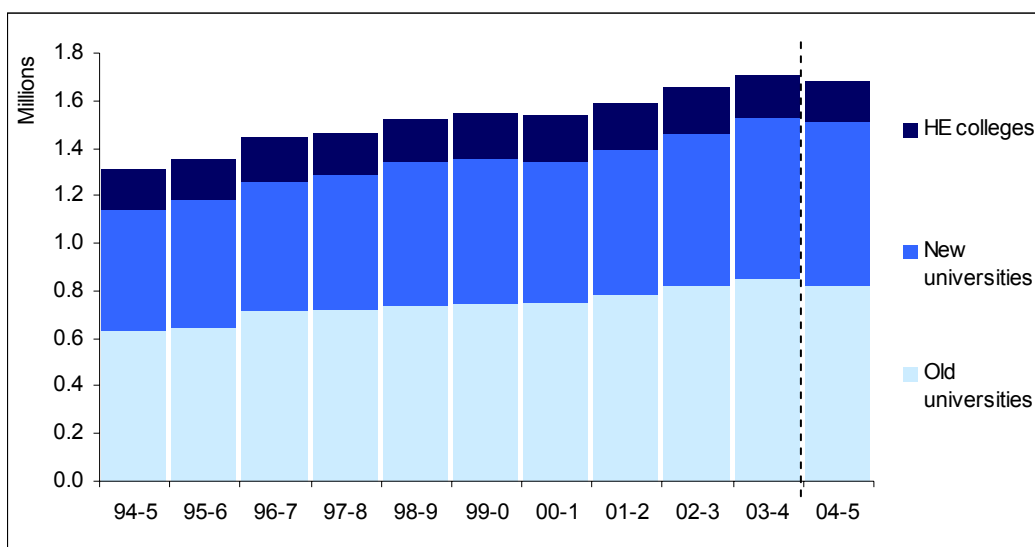
Table 3.1 shows the numbers of FTE students and FTE academic/academic related staff in all UK higher education institutions, taken from HESA reports (*see Bibliography, pages 190-196*). The figures presented here for FTE students have been used to give comparable per capita figures for this section of the report; changes in the definition of FTE students were discussed on page 119.

Table 3.2 shows the number of institutions reporting to HESA, and the estimated number of library service points managed by their librarians. One important omission from this table prior to 1999-2000 has been the individual college libraries of the Oxford and Cambridge colleges, although the main university libraries of both institutions are included.

These two tables show contrasting pictures. The number of potential users has grown throughout the period, whereas the number of institutions has fallen. The growth in user numbers is largely the result of government initiatives to increase the number of students in higher education in the UK; there is a small element from mergers of FE colleges with HE institutions. Omitting the non-credit bearing students from the 2003-04 figures gives increases in student numbers of 1.1% for old universities and 4.1% for the new universities, with a fall of 7.8% for the HE colleges. Overall, the increase is 1.4%

The falling number of institutions is the net result of mergers within the sector and new institutions coming under the HESA umbrella for the first time. The number of libraries increased until 1997-98, partly as a result of new building, and partly from the acquisition of libraries from the FE sector as institutions merged. A number of libraries have subsequently been closed as facilities are concentrated on major sites. This concentration of resources may be cost effective but could have a detrimental effect on the service to students if library facilities are withdrawn from teaching sites. The large increases reported in the old university sector have much to do with improved reporting by the Oxford University college libraries to SCONUL.

**Fig 3.5 FTE students**



**Table 3.1 FTE users ('000)**

	Old universities		New universities		HE colleges		All HE sector	
	Students	Academic staff	Students	Academic staff	Students	Academic staff	Students	Academic staff
1994-95	628.9	65.4	517.4	29.7	164.0	9.9	1,310.3	105.0
95-96	649.7	69.7	540.0	31.9	165.1	10.6	1,354.7	112.2
96-97	712.1	71.2	550.6	31.1	182.4	10.1	1,445.1	112.4
97-98	722.2	71.0	560.8	30.7	183.3	9.9	1,466.4	111.7
98-99	736.0	72.8	609.6	32.3	179.0	9.3	1,524.6	114.4
1999-2000	746.9	77.2	606.6	33.3	195.0	9.7	1,548.5	120.2
2000-01	749.7	79.3	599.3	32.9	194.4	10.0	1,543.4	122.2
01-02	785.1	81.8	614.0	33.4	186.6	10.1	1,585.7	125.3
02-03	821.1	83.9	638.8	33.7	199.6	10.1	1,659.4	127.7
03-04	851.7	81.0	677.8	34.0	177.6	8.3	1,707.1	123.2
04-05	824.5	87.3	692.8	36.9	161.0	8.8	1,678.3	133.1
<i>Change %</i>								
<i>Last year</i>		7.8		8.6		6.5		7.9
<i>5 year</i>		13.0		11.0		- 8.4		10.7
<i>10 year</i>		33		24		-11.1		27

Source: HESA

**Table 3.2 Number of libraries**

	Old universities		New universities		HE colleges		All HE sector	
	Institutions	Libraries	Institutions	Libraries	Institutions	Libraries	Institutions	Libraries
1994-95	75	340	42	204	65	100	182	644
95-96	72	350	42	222	66	100	180	672
96-97	72	390	42	250	63	90	177	730
97-98	69	400	42	243	63	90	174	733
98-99	67	400	42	223	60	100	169	723
1999-2000	67	450	42	218	60	110	169	778
2000-01	67	450	42	211	57	130	166	791
01-02	67	530	43	214	60	120	170	864
02-03	68	540	42	209	60	110	170	859
03-04	68	540	45	217	57	100	170	857
04-05	66	540	48	216	53	90	167	846
<i>Change %</i>								
<i>Last year</i>	- 2.9	0.0	6.7	- 0.5	- 7.0	- 10.0	- 1.8	- 1.3
<i>5 year</i>	- 1.5	20	14.3	- 0.9	- 11.7	- 18.2	- 1.2	8.7
<i>10 year</i>	- 12.0	59	14.3	5.9	- 18.5	- 10.0	- 8.2	31

Source: HESA/SCONUL/HCLRG

### Tables 3.3 – 3.5 Expenditure and income

Table 3.3 (page 132) shows total library expenditure related to total academic services expenditure, and to total institutional expenditure. The sources of these figures vary: library expenditure figures are drawn from SCONUL/HCLRG returns; figures for expenditure on academic services and total institutional expenditure are taken from HESA, *Resources of Higher Education Institutions*.

Expenditure on academic services, including libraries, academic computing services and media services, is showing the greatest rate of growth, ahead of total institutional expenditure over five and ten years. Within that, however, library spending is not increasing at the same rate. Although the table shows total spending in the sector growing at a rate much faster than general inflation, measured by the retail price index, this does not take into account the increases in student numbers over the period. This is shown in Table 3.4 (page 133) for library expenditure. Looking at library expenditure per FTE student, and making allowance for the change in definitions, only the HE college sector has increased spending by more than the rate of general inflation over the last year, and only the new universities have done so over five years. Overall the increase in spending per FTE student is 2.7% over the last year, and 10.9% over five years.

Fig 3.6 illustrates the proportions of total institutional expenditure on the library and on academic services generally, comparing this year’s figure with five and ten years ago. The proportion on academic services has increased over the ten-year period in all sectors, while that on libraries has fallen.

**Fig 3.6 Proportions of total institutional expenditure**

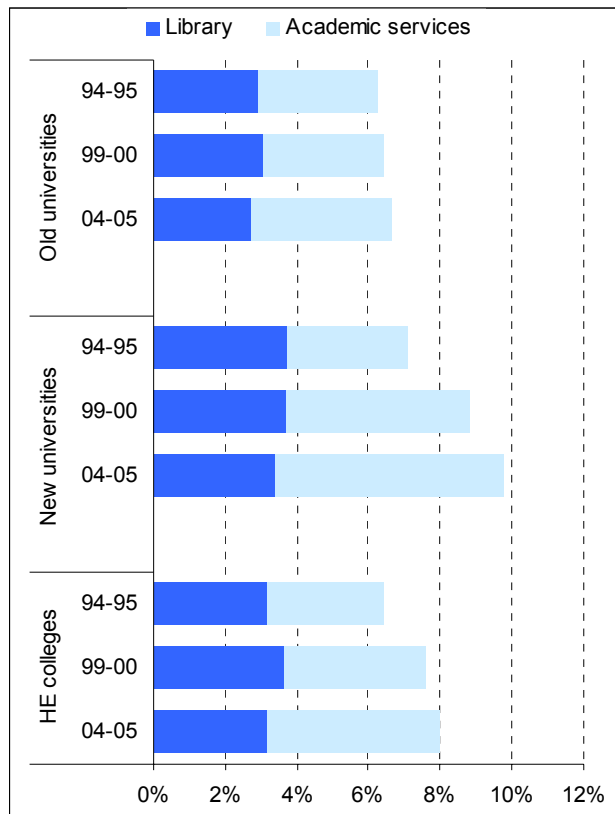


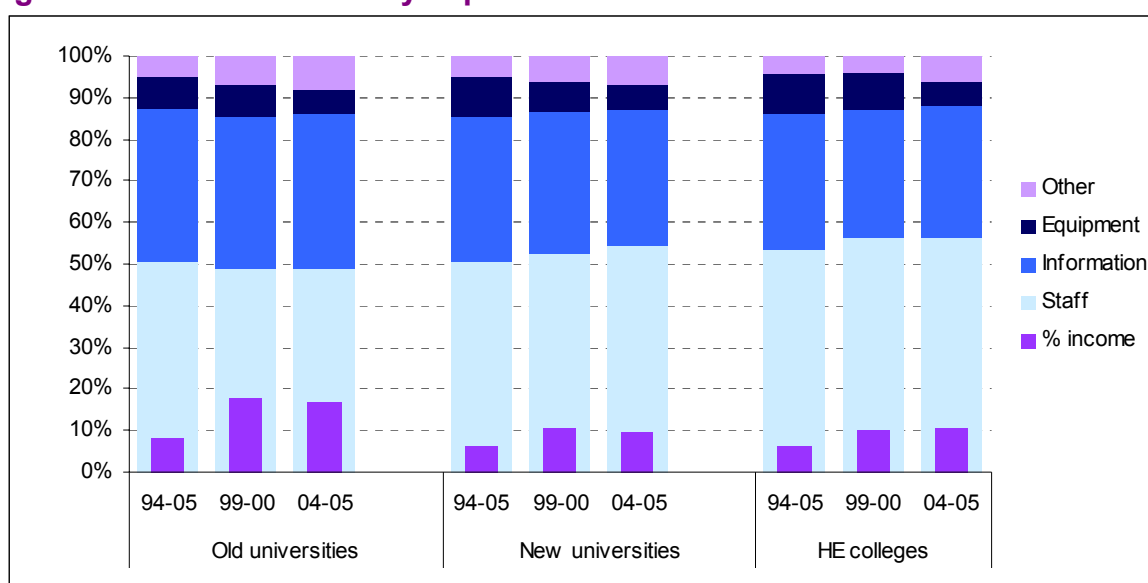
Fig 3.7 shows the breakdown of library expenditure into its four key components for each of the sectors, comparing the most recent year with the position five and ten years ago. There are some small differences between the sectors – HE colleges spend proportionately more on staff and less on information provision than universities. The proportion spent on equipment has fallen in all three sectors. The proportion spent on staff has fallen in the old universities, but increased in the HE colleges and new universities.

Table 3.5 (page 133) shows the income generated by libraries in the HE sector. The apparent increase between 1995-96 and 1996-97 for both the old and new universities was caused by a change in the SCONUL questionnaire that year. The number of categories of income for which data were required increased from six to 14, and it was immediately apparent that in many universities there were sums being shown as income in the new return which had not been included previously. Examples of such items include fees for separately funded students and use by other institutions; income from donations and bequests; research grants and other grants for specific purposes. The HCLRG return also included an item for research and other grant income in 1998-99; however this source appears to be relatively insignificant for HE colleges (or had been previously included under “other income”) as there was no significant jump in the levels of income reported. The patterns in the three sectors are again rather different in recent years.

Generated income represents a larger share of total expenditure in academic libraries than in the public library sector, at 14% overall. It is most important in the old universities, representing 17% of the total budget, compared to around 10% in new universities and HE colleges (Fig 3.7). It is interesting to note that the proportion has fallen over the last five years in the university sectors while the HE colleges have reported an increase over five and ten years.

The trends in income generated per FTE student are again complicated by the change in student FTE definitions. Taking this into account, there has been a substantial increase of over one third in the most recent year for the HE colleges, compared to a drop of 5% for the new universities. The old universities have shown an increase of 2.7%. Over five years, the HE colleges and new universities both have increased (by 5.3% and 3.4% respectively) while the old universities have a slight fall, of 0.3%.

**Fig 3.7 Breakdown of library expenditure**



**Table 3.3 Institutional expenditure (£m)**

	Old universities			New universities			RPI
	Total library	Academic services	Total institutional	Total library	Academic services	Total institutional	
1994-95	184.4	396.1	6,310.6	95.6	181.6	2,566.4	147.0
95-96	201.8	434.7	6,859.3	104.3	208.2	2,789.6	151.2
96-97	218.7	441.8	6,947.7	108.7	210.4	2,922.1	155.2
97-98	229.3	462.3	7,287.5	112.7	235.6	2,980.5	160.8
98-99	241.8	508.7	7,790.2	119.0	266.5	3,154.5	164.5
1999-2000	256.4	537.9	8,368.1	121.7	291.2	3,297.7	168.1
2000-01	260.5	586.2	8,980.7	124.8	310.2	3,486.0	172.4
01-02	271.8	654.6	9,631.1	131.7	347.1	3,671.3	174.6
02-03	286.3	677.4	10,259.9	137.9	355.9	3,872.1	179.3
03-04	310.3	742.3	11,116.2	152.8	424.1	4,361.7	184.2
04-05	322.9	788.8	11,891.2	161.6	464.3	4,752.5	190.0
<i>Change %</i>							
<i>Last year</i>	4.1	6.3	7.0	5.8	9.5	9.0	3.2
<i>5 year</i>	26	47	42	33	59	44	13.0
<i>10 year</i>	75	99	91	69	155	88	29

Source: SCONUL/HCLRG; HESA/USR

	HE colleges			Total			RPI
	Total library	Academic services	Total institutional	Total library	Academic services	Total institutional	
1994-95	27.7	55.7	869.3	307.8	633.4	9,746.3	147.0
95-96	29.8	62.9	964.4	335.8	705.8	10,613.4	151.2
96-97	27.9	65.2	942.5	355.3	717.4	10,812.2	155.2
97-98	30.2	70.8	937.4	372.2	768.7	11,205.4	160.8
98-99	35.9	74.1	974.4	396.7	849.3	11,919.1	164.5
1999-2000	37.5	78.8	1,038.2	415.6	907.9	12,704.0	168.1
2000-01	38.2	86.7	1,071.0	423.5	983.1	13,537.8	172.4
01-02	38.0	94.0	1,117.5	441.5	1,095.8	14,420.0	174.6
02-03	40.9	104.5	1,213.0	465.1	1,137.8	15,345.1	179.3
03-04	36.8	91.1	1,140.9	500.0	1,257.5	16,618.8	184.2
04-05	35.6	90.3	1,128.7	520.2	1,343.4	17,772.4	190.0
<i>Change %</i>							
<i>Last year</i>	- 3.3	- 0.9	- 1.1	4.1	6.8	6.9	3.2
<i>5 year</i>	- 4.9	14.6	8.7	25	48	40	13.0
<i>10 year</i>	29	62	34	69	112	85	29

Source: SCONUL/HCLRG; HESA/USR

**Table 3.4 Total library expenditure**

	Old universities		New universities		HE colleges		All HE sector	
	£'000	£ per FTE student	£'000	£ per FTE student	£'000	£ per FTE student	£'000	£ per FTE student
1994-95	184,446	293	95,606	185	27,727	169	307,779	235
95-96	201,760	311	104,280	193	29,767	180	335,807	248
96-97	218,663	307	108,714	197	27,898	153	355,275	246
97-98	229,317	318	112,666	201	30,186	165	372,169	254
98-99	241,839	329	119,008	195	35,889	201	396,736	260
1999-2000	256,439	343	121,715	201	37,487	192	415,641	268
2000-01	260,522	348	124,752	208	38,221	197	423,495	274
01-02	271,778	346	131,701	215	37,983	204	441,462	278
02-03	286,282	349	137,916	216	40,860	205	465,058	280
03-04	310,210	364	152,798	225	36,846	208	499,854	293
04-05	322,923	392	161,638	233	35,638	221	520,199	310
<i>Change %</i>								
<i>Last year</i>	4.1		5.8		- 3.3		4.1	
<i>5 year</i>	26		33		- 4.9		25	
<i>10 year</i>	75		69		29		69	

Source: SCONUL/HCLRG

**Table 3.5 Income generated**

	Old universities		New universities		HE colleges		All HE sector	
	£'000	£ per FTE student	£'000	£ per FTE student	£'000	£ per FTE student	£'000	£ per FTE student
1994-95	14,887	24	6,192	12	1,758	11	22,837	17
95-96	17,267	27	6,309	12	1,850	11	25,426	19
96-97	40,502	57	11,264	20	2,051	11	53,817	37
97-98	42,181	58	11,812	21	2,816	15	56,809	39
98-99	36,214	49	12,966	21	2,582	14	51,762	34
1999-2000	46,672	62	12,903	21	3,873	20	63,448	41
2000-01	48,215	64	11,987	20	2,952	15	63,154	41
01-02	50,461	64	15,373	25	2,963	16	68,797	43
02-03	48,154	59	14,125	22	2,853	14	65,132	39
03-04	51,678	61	15,746	23	2,980	17	70,404	41
04-05	53,652	65	15,544	22	3,710	23	72,906	43
<i>Change %</i>								
<i>Last year</i>	3.8		- 1.3		25		3.6	
<i>5 year</i>	15.0		21		- 4.2		14.9	
<i>10 year</i>					111			

Source: SCONUL/HCLRG

Change in RPI: last year + 3.2%; 5 years + 13.0%; over 10 years + 29%

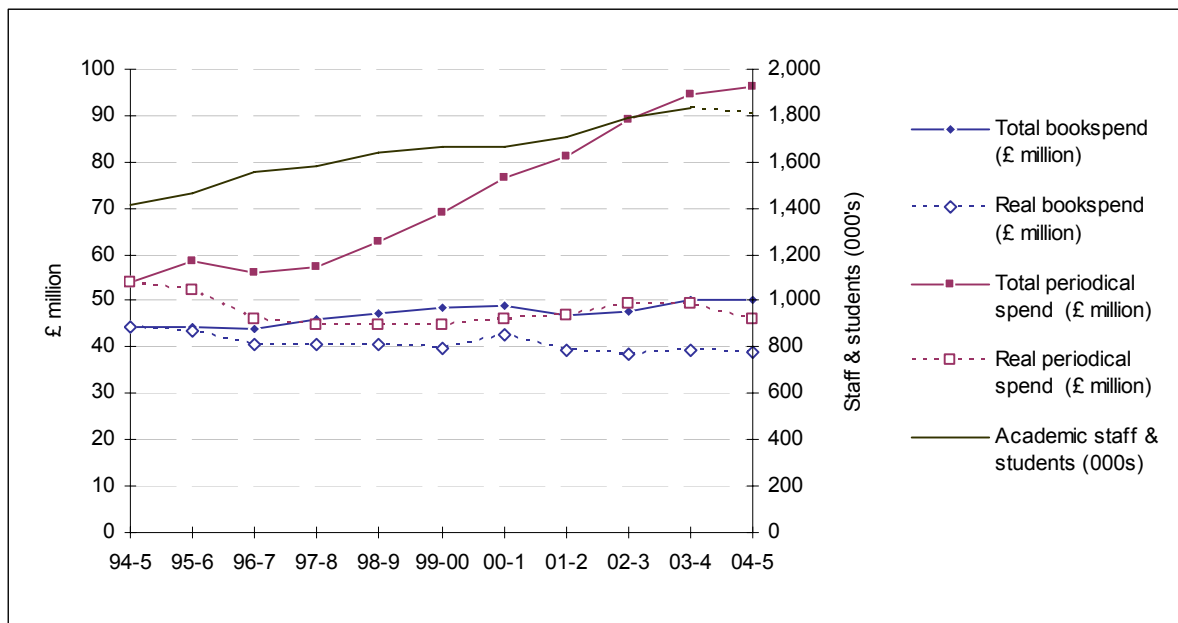
## Tables 3.6 – 3.9 Expenditure on information provision

Table 3.6 (page 137) shows expenditure on information provision in total and per FTE student. Table 3.7 gives the average prices paid for books and serials, and Table 3.8 (pages 138-139) shows expenditure broken down into its component parts – books, serials, other electronic resources, inter-library loans and binding. Table 3.9 gives further details for serials expenditure.

Expenditure on information provision accounts for just over one third of total expenditure on average, and this proportion has remained relatively constant over the ten-year period. In 2004-05, £183 million was spent, £109 per FTE student. Spending per FTE student is twice as high in the old university sector than in either the new universities or HE colleges.

Fig 3.8 illustrates the trends in book and serial expenditure both in cash terms, and after adjusting for inflation measured by the relevant material price indexes. Although periodical spend has increased dramatically, almost doubling over ten years, it did not keep pace with serial price increases in the early years. Academic book price inflation has run at a rather slower rate, but the increase in book spending has also been slower, with a total increase of 13% over ten years. Fig 3.8 also shows the trends in the user base (FTE academic staff and students) for comparison.

**Fig 3.8 Trends in book and periodical expenditure**



Making allowance for the change in the definition of student numbers, overall spending on information provision per FTE student has increased by less than 1% over the last year, and by almost 11% over five years.

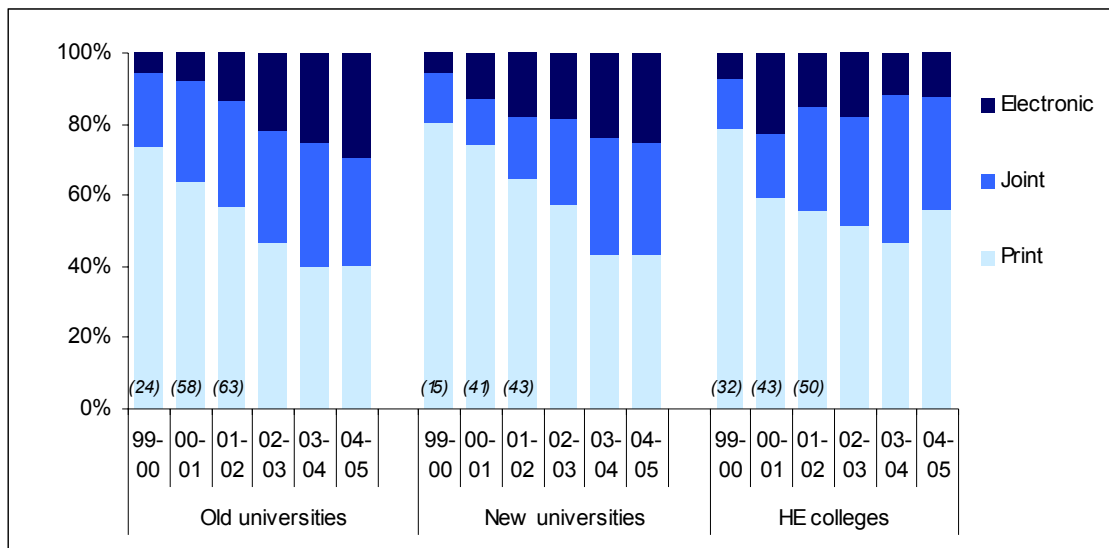
Only the HE colleges now spend more on books than they do on serials. Overall, the proportion of the total spent on books has fallen in each of the last seven years, while the proportion spent on electronic resources (other than serials) continues to increase. In 2004-05, an average of £30 was spent on books per FTE student, £57 on serials (including e-journals), £16 on other electronic resources, and £3 on each of binding and inter-library loans.

## Serial subscriptions

There have been a number of changes in the way SCONUL (and HCLRG) have recorded expenditure on electronic serials over recent years. In 1996-97, these were formally classified as “electronic resources”, resulting in a dramatic increase in the proportion spent. In 1999-2000 the decision was made to classify expenditure by content rather than media. The overall effect on expenditure of returning electronic serials to the serials head at that time was not, however, marked. In the HCLRG questionnaire, explicit details of expenditure on electronic resources were sought for the first time in 1998-99. Previously this expenditure was shown under books or serials. The definitions in this area for all three sectors are now identical. As the HE colleges account for a relatively small proportion of overall expenditure, the sector totals have been given, as the broad trends are unlikely to be affected by this change.

The provision and use of electronic resources is of increasing interest to academic librarians, and respondents to the SCONUL questionnaire are increasingly able to provide reliable data separating expenditure on electronic and print serials. Since 2002-03, the data appear to be sufficiently reliable to be able to produce estimates for the sector as a whole and these are shown in Table 3.9. In 2004-05, HE libraries spent £40m on print subscriptions, £27m on electronic subscriptions, and £29m on joint format subscriptions. Fig 3.9 illustrates the pattern of spending over the last five years, with figures prior to 2002-03 based on that subset of institutions able to provide complete detail (the figures in brackets indicate the number included). The rapidly changing pattern of serials expenditure moving from print to electronic formats appears to have slowed. The ways in which serial titles are delivered continue to change, in particular the move towards open access titles, which are not included in the SCONUL count. This area is one where there is likely to be considerable change in the future.

**Fig 3.9 Breakdown of serials expenditure**



Figures in brackets are the number of institutions included

## Electronic resources

Electronic resources other than serials are becoming an increasingly important element of provision in academic libraries, accounting for 15% of information provision expenditure overall in 2004-05. This is now the fastest growing area of expenditure in all sectors, with increases of 12% on average in the most recent year. However, defining and counting the number of such resources provided has proved problematic. Following work done at the University of Central England, SCOUNL has adopted definitions for counting electronic databases received by subscription, and electronic books, also seeking detailed data on expenditure on these items. This area of the return is relatively poorly completed at present, and it is not possible to estimate the average costs of these resources, or give any further breakdown of expenditure on electronic resources, which also includes other digital documents. Relevant data will be included in this report when they are sufficiently complete and reliable.

## Average cost of resources

Table 3.7 shows the average price paid for books and serials for the three sectors. There are a number of points to note:

- Items received by donation or in exchange have no associated purchase cost, but are included in the count of acquisitions, lowering the apparent average cost of materials; in particular the average cost of materials for the old universities is affected by the acquisition of items by Oxford and Cambridge universities under copyright deposit legislation.
- The average costs of both books and serials are well below the average prices at publication (*Table 5.3a, page 172 and Table 5.5, page 175*). Institutions are clearly adept at making the most of scarce resources.
- A further complicating factor in the average price paid for serials has been the increasing prevalence of bundled 'deals', such as those arranged in the National Electronic Site License Initiative (NESLI). For an often nominal extra cost a large number of titles can be obtained electronically, artificially lowering the average price per title. This seems likely to be at least part of the explanation for the reduction in the average price paid for serials, by the new universities in particular. Over the last three years, however, across the sector as a whole, the average price paid for serials appears to have stabilised.

**Table 3.6 Expenditure on information provision**

	Old universities		New universities		HE colleges		All HE sector	
	£'000	£ per FTE student	£'000	£ per FTE student	£'000	£ per FTE student	£'000	£ per FTE student
1994-95	67,865	108	33,461	65	9,239	56	110,564	84
95-96	72,228	111	35,541	66	9,197	56	116,967	86
96-97	76,960	108	36,709	67	8,639	47	122,308	85
97-98	80,502	111	38,303	68	8,940	49	127,745	87
98-99	85,399	116	40,482	66	10,406	58	136,287	89
1999-2000	93,942	126	41,216	68	11,709	60	146,867	95
2000-01	99,044	132	42,135	70	11,616	60	152,795	99
01-02	103,248	132	43,775	71	11,383	61	158,406	100
02-03	110,626	135	44,931	70	12,320	62	167,878	101
03-04	118,730	139	48,868	72	11,758	66	179,340	105
04-05	119,885	145	52,447	76	10,998	68	183,330	109
<i>Change %</i>								
<i>Last year</i>	<i>1.0</i>		<i>7.3</i>		<i>- 6.5</i>		<i>2.2</i>	
<i>5 year</i>	<i>28</i>		<i>27</i>		<i>- 6.1</i>		<i>25</i>	
<i>10 year</i>	<i>77</i>		<i>57</i>		<i>19</i>		<i>66</i>	

Source: SCOUNL/HCLRG

**Table 3.7 Average price paid for materials (£)**

	Old universities		New universities		HE colleges		All HE sector	
	Books	Serials	Books	Serials	Books	Serials	Books	Serials
1994-95	16.35	95.51	16.79	133.85	12.34	80.69	15.83	102.00
95-96	16.69	101.94	17.45	146.34	11.95	90.65	16.16	110.01
96-97	18.43	97.85	16.08	120.82	11.86	80.81	16.63	101.48
97-98	17.42	97.86	17.21	120.83	13.65	85.06	16.88	101.97
98-99	17.06	104.12	17.10	113.81	13.41	86.56	16.58	105.26
1999-2000	18.04	106.69	16.92	100.43	14.22	87.43	17.14	103.81
2000-01	17.52	97.40	17.36	84.22	13.32	77.95	16.94	92.67
01-02	14.58	88.46	17.37	75.32	14.23	66.66	15.35	83.50
02-03	16.47	88.07	18.00	66.60	14.68	54.14	16.70	79.64
03-04	17.20	94.22	18.23	56.91	16.13	67.17	17.41	81.03
04-05	19.39	102.21	19.50	51.74	17.00	44.27	19.19	80.09
<i>Change %</i>								
<i>Last year</i>	<i>12.7</i>	<i>8.5</i>	<i>7.0</i>	<i>- 9.1</i>	<i>5.4</i>	<i>- 34</i>	<i>10.2</i>	<i>- 1.2</i>
<i>5 year</i>	<i>7.5</i>	<i>- 4.2</i>	<i>15.3</i>	<i>- 49</i>	<i>19.5</i>	<i>- 49</i>	<i>11.9</i>	<i>- 23</i>
<i>10 year</i>	<i>18.6</i>		<i>16.1</i>					

Source: SCOUNL/HCLRG

Changes in price indexes: LISU academic book price index: last year + 0.7%; 5 years + 5.3%; 10 years + 29%  
 Composite periodical price index: last year + 8.7%; 5 years + 34%; 10 years + 108%

**Table 3.8a Breakdown of information provision expenditure**

Old universities	Books		Serials		Electronic resources		ILLs		Binding	
	£'000	% of total	£'000	% of total	£'000	% of total	£'000	% of total	£'000	% of total
1994-95	22,776	33.6	37,249	54.9	1,546	2.3	3,039	4.5	3,249	4.8
95-96	23,089	32.0	40,063	55.5	1,939	2.7	3,524	4.9	3,605	5.0
96-97	24,076	31.3	39,532	51.4	5,727	7.4	3,851	5.0	3,774	4.9
97-98	25,717	31.9	39,828	49.5	6,913	8.6	4,191	5.2	3,796	4.7
98-99	25,933	30.4	44,250	51.8	7,766	9.1	3,988	4.7	3,462	4.1
1999-2000	26,930	28.7	48,544	51.7	8,490	9.0	3,530	3.8	4,837	5.1
2000-01	28,167	28.4	54,157	54.7	8,419	8.5	3,406	3.4	4,887	4.9
01-02	26,676	25.8	57,323	55.5	10,988	10.6	3,382	3.3	4,877	4.7
02-03	27,434	24.8	64,202	58.0	11,383	10.3	3,098	2.8	4,510	4.1
03-04	29,054	24.5	69,440	58.5	12,785	10.8	3,093	2.6	4,417	3.7
04-05	28,211	23.5	70,219	58.6	14,272	11.9	2,860	2.4	4,322	3.6
<b>Change %</b>										
Last year	- 2.9	- 3.8	1.1	0.1	11.6	10.6	- 7.5	- 8.4	- 2.2	- 3.1
5 year	4.8	- 17.9	45	13.3	68	32	- 19.0	- 37	- 10.6	- 30
10 year	24	- 30					- 5.9	- 47	33	- 25

Source: SCOUNL/HCLRG

**Table 3.8b Breakdown of information provision expenditure**

New universities	Books		Serials		Electronic resources		ILLs		Binding	
	£'000	% of total	£'000	% of total	£'000	% of total	£'000	% of total	£'000	% of total
1994-95	15,726	47.0	13,857	41.4	1,243	3.7	1,922	5.7	713	2.1
95-96	15,861	44.6	15,424	43.4	1,259	3.5	2,253	6.3	742	2.1
96-97	15,120	41.2	13,800	37.6	4,884	13.3	2,124	5.8	783	2.1
97-98	15,544	40.6	14,498	37.9	5,515	14.4	2,040	5.3	705	1.8
98-99	16,295	40.3	15,425	38.1	5,955	14.7	1,987	4.9	793	2.0
1999-2000	16,079	39.0	16,612	40.3	6,593	16.0	1,255	3.0	677	1.6
2000-01	15,847	37.6	17,988	42.7	6,340	15.0	1,413	3.4	580	1.4
01-02	15,457	35.3	19,643	44.9	6,576	15.0	1,562	3.6	537	1.2
02-03	15,136	33.7	20,427	45.5	7,506	16.7	1,421	3.2	443	1.0
03-04	16,529	33.8	20,867	42.7	9,674	19.8	1,349	2.8	449	0.9
04-05	17,492	33.4	21,986	41.9	11,100	21.2	1,431	2.7	437	0.8
<b>Change %</b>										
Last year	5.8	- 1.4	5.4	- 1.8	14.7	6.9	6.0	- 1.2	- 2.8	- 9.4
5 year	8.8	- 14.5	32	4.0	68	32	14.0	- 10.4	- 36	- 49
10 year	11.2	- 29					- 26	- 53	- 39	- 61

Source: SCOUNL/HCLRG

Changes in price indexes: LISU academic book price index: last year + 0.7%; 5 years + 5.3%; 10 years + 29%  
 Composite periodical price index: last year + 8.7%; 5 years + 34%; 10 years + 108%

**Table 3.8c Breakdown of information provision expenditure**

HE colleges	Books		Serials		Electronic resources		ILLs		Binding	
	£'000	% of total	£'000	% of total	£'000	% of total	£'000	% of total	£'000	% of total
1994-95	5,736	62.1	2,905	31.4	55	0.6	407	4.4	155	1.7
95-96	5,437	59.1	3,082	33.5	50	0.5	408	4.4	220	2.4
96-97	4,556	52.7	2,909	33.7	575	6.7	394	4.6	201	2.3
97-98	4,708	52.7	2,977	33.3	694	7.8	409	4.6	190	2.1
98-99	5,202	50.0	3,116	29.9	1,473	14.2	416	4.0	215	2.1
1999-2000	5,461	46.6	4,022	34.3	1,595	13.6	406	3.5	194	1.7
2000-01	4,863	41.9	4,365	37.6	1,789	15.4	388	3.3	210	1.8
01-02	4,953	43.5	4,266	37.5	1,598	14.0	375	3.3	190	1.7
02-03	5,196	42.2	4,548	36.9	2,033	16.5	392	3.2	204	1.7
03-04	4,773	40.6	4,232	36.0	2,260	19.2	328	2.8	166	1.4
04-05	4,437	40.3	3,896	35.4	2,208	20.1	294	2.7	163	1.5
<i>Change %</i>										
Last year	- 7.0	- 0.6	- 7.9	- 1.6	- 2.3	4.5	- 10.4	- 42	- 1.8	5.0
5 year	- 18.8	- 13.5	- 3.1	3.1	38	47	- 28	- 23	- 16.0	- 10.5
10 year							- 28	- 39	5.2	- 11.7

Source: SCOUNL/HCLRG

**Table 3.8d Breakdown of information provision expenditure**

Total HE sector	Books		Serials		Electronic resources		ILLs		Binding	
	£'000	% of total	£'000	% of total	£'000	% of total	£'000	% of total	£'000	% of total
1994-95	44,238	40.0	54,011	48.9	2,844	2.6	5,368	4.9	4,117	3.7
95-96	44,387	37.9	58,569	50.1	3,248	2.8	6,185	5.3	4,567	3.9
96-97	43,752	35.8	56,241	46.0	11,186	9.1	6,369	5.2	4,758	3.9
97-98	45,969	36.0	57,303	44.9	13,122	10.3	6,640	5.2	4,691	3.7
98-99	47,430	34.8	62,791	46.1	15,194	11.1	6,391	4.7	4,470	3.3
1999-2000	48,470	33.0	69,178	47.1	16,678	11.4	5,191	3.5	5,708	3.9
2000-01	48,877	32.0	76,510	50.1	16,548	10.8	5,207	3.4	5,677	3.7
01-02	47,086	29.7	81,232	51.3	19,162	12.1	5,319	3.4	5,604	3.5
02-03	47,766	28.5	89,177	53.1	20,922	12.5	4,911	2.9	5,157	3.1
03-04	50,356	28.1	94,539	52.7	24,719	13.8	4,770	2.7	5,032	2.8
04-05	50,140	27.3	96,101	52.4	27,580	15.0	4,585	2.5	4,922	2.7
<i>Change %</i>										
Last year	- 0.4	- 2.6	1.7	- 0.6	11.6	9.2	- 3.9	- 6.0	- 2.2	- 4.3
5 year	3.4	- 17.1	39	11.3	65	33	- 11.7	- 29	- 13.8	- 31
10 year							- 14.6	- 49	19.6	- 28

Source: SCOUNL/HCLRG

Changes in price indexes: LISU academic book price index: last year + 0.7%; 5 years + 5.3%; 10 years + 29%  
 Composite periodical price index: last year + 8.7%; 5 years + 34%; 10 years + 108%

**Table 3.9 Breakdown of serials expenditure**

	Print only			Electronic only			Joint format		
	£'000	£ per academic staff	% of total	£'000	£ per academic staff	% of total	£'000	£ per academic staff	% of total
<b>Old Universities</b>									
2002-03	29,953	357	47	14,142	169	22	20,111	240	31
03-04	27,834	344	40	17,573	217	25	24,033	297	35
04-05	28,539	327	41	20,453	234	29	21,221	243	30
<i>Change%</i>									
<i>Last year</i>	2.5	- 4.9	1.4	16.4	7.9	15.1	- 11.7	- 18.1	- 12.7
<b>New Universities</b>									
2002-03	11,673	347	57	3,815	113	19	4,939	147	24
03-04	9,042	266	43	4,889	144	23	6,939	204	33
04-05	9,468	257	43	5,61	152	26	6,910	187	31
<i>Change%</i>									
<i>Last year</i>	4.7	- 3.6	- 0.6	14.7	5.7	8.9	- 0.4	- 8.3	- 5.5
<b>HE colleges</b>									
2002-03	2,339	230	52	816	80	18	1,365	135	30
03-04	1,967	237	47	504	61	12	1,755	211	42
04-05	2,189	248	56	490	55	13	1,220	138	31
<i>Change%</i>									
<i>Last year</i>	11.3	4.5	21	- 2.8	- 8.7	5.4	- 31	- 35	- 25
<b>Total HE sector</b>									
2002-03	43,965	344	49	18,773	147	21	26,415	207	30
03-04	38,843	315	41	22,966	186	24	32,727	266	35
04-05	40,196	302	42	26,553	200	28	29,351	221	31
<i>Change%</i>									
<i>Last year</i>	3.5	- 4.1	1.8	15.6	7.1	13.7	- 10.3	- 16.9	- 11.8

Source: SCONUL

Changes in Composite periodical price index: last year + 8.7%; 5 years + 34%; 10 years + 108%

## Tables 3.10 – 3.14 Books and serials

### Books

Table 3.10 (page 143) shows the total catalogued bookstock held in academic libraries. Stocks are highest in the old universities, which include the copyright deposit collections of Oxford and Cambridge, and several other large historic collections. It is interesting to note that the HE colleges hold more books per FTE student than new universities. Table 3.11 (page 143) shows additions to bookstock. The old universities' figures include the copyright deposit items received by Oxford and Cambridge universities. Acquisitions per FTE student continue to fall in both the old universities and HE colleges, although there has been little change this year in the rate of acquisitions in the new university sector.

Making allowance for the change in definition of FTE students, overall there has been no change in stock per FTE student in the last year, with an average of 67 books per FTE. Over five years there has been a slight fall, of 1.4%. Acquisitions per FTE student have fallen in all sectors over the last year and over five years. The greatest fall over five years has been in the HE college sector, with a fall in acquisitions per FTE student of 25%, compared to 19% in the new universities and 16% in the old universities.

**Fig 3.10 Stock replenishment %**

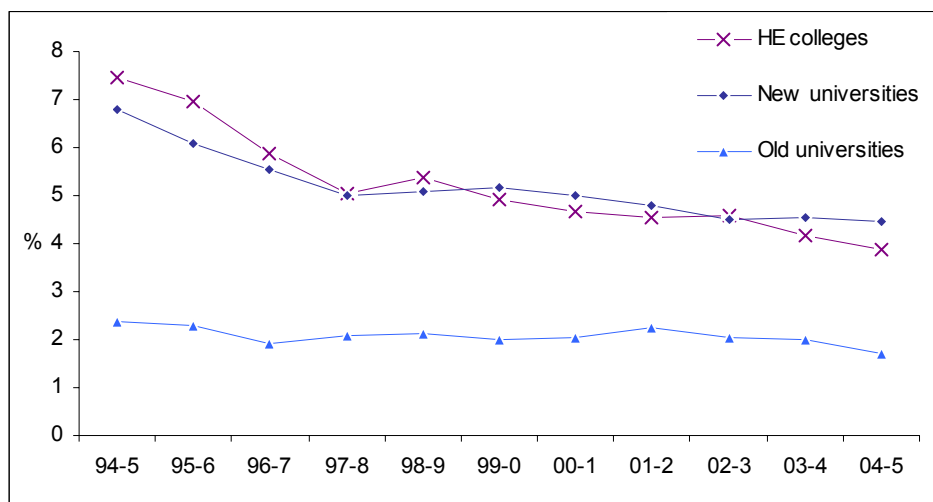


Fig 3.10 shows the stock replenishment rate – the proportion of new acquisitions each year. This has been falling in both the HE colleges and new universities, although the rate of decline has slowed in recent years in the new universities. The larger stocks held by the old universities are reflected in a lower replenishment rate, which has remained fairly constant over the period. Overall, acquisitions represented just 2.3% of total bookstock in 2004-05. This is considerably lower than in the public library sector, and reflects the importance of historical and reference collections in the academic sector. This latter point is reinforced by the relatively low rate of stock turnover – issues per book – consistently below one. Note that in-library use of material is not counted, however.

### Book issues

Table 3.12 (page 144) shows the use made of the loan collections. In general, loans per FTE student have been increasing over the period, although the pattern in the HE colleges appears somewhat different, with loans per FTE student relatively steady in recent years.

Making allowance for the change in the definitions of FTE students, in the latest year loans per FTE student have fallen by 2.7% in the HE colleges and by 1.2% in the old universities. However, there has been an increase of 2.8% in the new universities, leading to an overall increase of just 0.3%. Over the last five years, the overall increase in loans per FTE student is 7.1%, but there are considerable differences between the sectors, with a drop of 10.8% in the HE colleges, but a rise of 10.7% in the old universities and 7.9% in the new universities. It is clear that, despite the increasing availability of electronic resources, students still wish to borrow printed material for their studies.

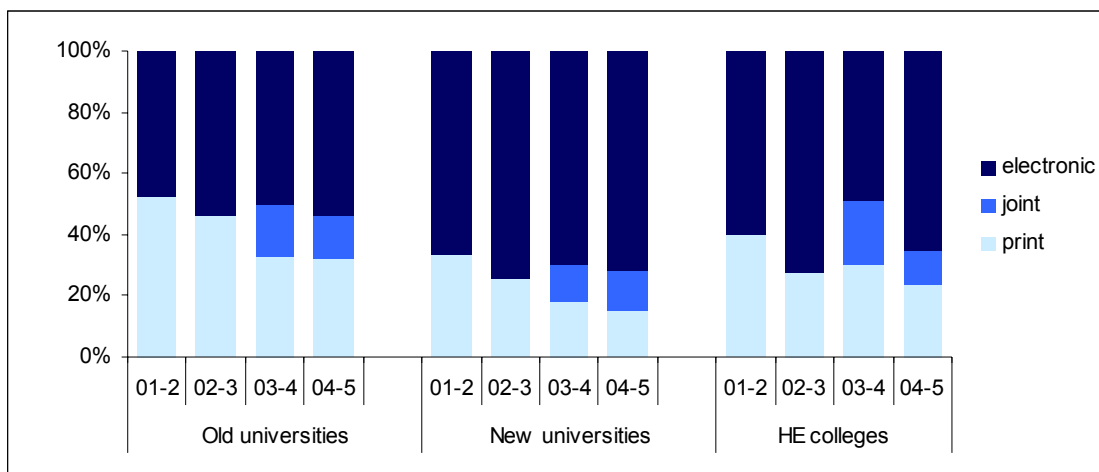
## Serials

The number of current serial subscriptions is shown per institution and per FTE academic staff in Table 3.13 (page 144). It can be argued that the number of journals required relates more to the breadth of subjects taught and research undertaken than the number of students in each discipline. There can be no doubt that the size of the institution will have an effect on the numbers of journals purchased. However, subject mix and research activity will also play a part. It is not surprising that the old universities hold more current serial subscriptions per institution than either new universities or HE colleges.

The breakdown of subscriptions between print and electronic formats is of particular interest, and an area in which SCONUL is developing its data collection. There have been a number of changes in the way the data are collected, and available sector-wide estimates are given in Table 3.14, and illustrated in Fig 3.11. The patterns shown in this analysis of titles follow those for expenditure, discussed above.

Overall, the growth in the total number of subscriptions taken appears to have slowed, although the HE college sector is showing less evidence of this than the university sectors. It seems likely that this will continue to be the case, as the SCONUL data do not include serials available freely to all on the internet, including the increasing numbers of open access journal titles.

**Fig 3.11 Breakdown of serial subscriptions, 2004-05**



Joint formats included in electronic prior to 2003-04

**Table 3.10 Bookstock**

	Old universities		New universities		HE colleges		All HE sector	
	'000	per FTE student	'000	per FTE student	'000	per FTE student	'000	per FTE student
1994-95	59,084	94	13,798	27	6,231	38	79,113	60
95-96	60,575	93	14,888	28	6,534	40	81,997	61
96-97	68,036	96	17,010	31	6,523	36	91,569	63
97-98	70,339	97	18,054	32	6,833	37	95,226	65
98-99	71,824	98	18,781	31	7,221	40	97,827	64
1999-2000	74,727	100	18,368	30	7,843	40	100,938	65
2000-01	78,223	104	18,226	30	7,791	40	104,239	68
01-02	81,909	104	18,508	30	7,631	41	108,047	68
02-03	82,032	100	18,696	29	7,744	39	108,471	65
03-04	83,668	98	20,000	30	7,092	40	110,771	65
04-05	85,368	104	20,200	29	6,734	42	113,302	67
<i>Change %</i>								
<i>Last year</i>	2.0		1.0		- 5.0		1.4	
<i>5 year</i>	14.2		10.0		-14.1		11.3	
<i>10 year</i>	46		46		8.1		42	

Source: SCONUL/HCLRG

**Table 3.11 Additions to bookstock**

	Old universities		New universities		HE colleges		All HE sector	
	'000	per FTE student	'000	per FTE student	'000	per FTE student	'000	per FTE student
1994-95	1,393	2.2	936	1.8	465	2.8	2,794	2.1
95-96	1,383	2.1	909	1.7	455	2.8	2,747	2.0
96-97	1,306	1.8	940	1.7	384	2.1	2,630	1.8
97-98	1,476	2.0	903	1.6	345	1.9	2,724	1.9
98-99	1,520	2.1	953	1.6	388	2.2	2,861	1.9
1999-2000	1,493	2.0	950	1.6	384	2.0	2,828	1.8
2000-01	1,608	2.1	913	1.5	365	1.9	2,886	1.9
01-02	1,830	2.3	890	1.4	348	1.9	3,069	1.9
02-03	1,666	2.0	841	1.3	354	1.8	2,861	1.7
03-04	1,689	2.0	907	1.3	296	1.7	2,891	1.7
04-05	1,455	1.8	897	1.3	261	1.6	2,613	1.6
<i>Change %</i>								
<i>Last year</i>	- 13.9		- 1.1		-11.8		- 9.6	
<i>5 year</i>	- 2.5		- 5.6		- 32		- 7.6	
<i>10 year</i>	4.5		- 4.2		- 44		- 6.5	

Source: SCONUL/HCLRG

**Table 3.12 Issues**

	Old universities		New universities		HE colleges		All HE sector	
	'000	per FTE student	'000	per FTE student	'000	per FTE student	'000	per FTE student
1994-95	30,024	48	24,954	48	7,937	48	62,915	48
95-96	31,386	48	26,569	49	8,145	49	66,100	49
96-97	33,842	48	29,747	54	8,718	48	72,307	50
97-98	35,646	49	30,179	54	9,300	51	75,125	51
98-99	36,983	50	31,458	52	9,277	52	77,718	51
1999-2000	37,507	50	30,874	51	10,238	53	78,619	51
2000-01	38,952	52	30,504	51	10,148	52	79,604	52
01-02	41,505	53	32,771	53	9,581	51	83,857	53
02-03	44,167	54	34,099	53	10,232	51	88,498	53
03-04	47,973	56	36,248	53	9,258	52	93,479	55
04-05	47,881	58	38,819	56	8,302	52	95,002	57
<i>Change %</i>								
Last year	- 0.2		7.1		- 10.3		1.6	
5 year	28		26		- 18.9		21	
10 year	60		56		4.6		51	

Source: SCONUL/HCLRG

**Table 3.13 Current serial subscriptions**

	Old universities			New universities			HE colleges			All HE colleges		
	Total ('000)	per institution ('000)	per academic staff FTE	Total ('000)	per institution ('000)	per academic staff FTE	Total ('000)	per institution ('000)	per academic staff FTE	Total ('000)	per institution ('000)	per academic staff FTE
1994-95	390	5.2	6.4	104	2.5	3.5	36	0.6	4.1	530	2.9	5.3
95-96	393	5.5	5.9	105	2.5	3.5	34	0.5	3.9	532	3.0	5.0
96-97	404	5.6	5.9	114	2.7	3.8	36	0.6	4.1	555	3.1	5.2
97-98	407	5.9	5.9	120	2.9	4.0	35	0.6	3.9	562	3.2	5.2
98-99	425	6.3	5.8	136	3.2	4.2	36	0.6	3.9	597	3.5	5.2
1999-2000	455	6.8	5.9	165	3.9	5.0	46	0.8	4.8	667	3.9	5.5
2000-01	556	8.3	7.0	214	5.1	6.5	56	1.0	5.6	826	5.0	6.8
01-02	648	9.7	7.9	261	6.1	7.8	64	1.1	6.4	972	5.7	7.8
02-03	729	10.7	8.7	307	7.3	9.1	84	1.4	8.3	1,115	6.6	8.8
03-04	737	10.8	9.1	367	8.1	10.8	63	1.1	7.6	1,167	6.9	9.5
04-05	687	10.4	7.9	425	8.9	11.5	88	1.7	10.0	1,200	7.2	9.0
<i>Change %</i>												
Last year	- 6.8	- 4.0	- 13.5	15.9	8.6	6.7	40	50	31	2.8	4.7	- 4.7
5 year	51	53	34	157	125	132	91	117	109	80	82	63
10 year	76	100	23	310	259	231	144	200	143	127	147	70

Source: SCONUL/HCLRG

**Table 3.14 Breakdown of serial subscriptions**

	Old universities		New universities		HE colleges		All HE sector		
	'000	% of total	'000	% of total	'000	% of total	'000	% of total	
<b>Print only</b>									
2001-02	341	53	87	33	25	40	453	47	
02-03	338	46	78	25	23	28	439	39	
03-04	240	33	68	19	19	30	327	28	
04-05	222	32	65	15	21	24	308	26	
<i>Change %</i>									
<i>Last year</i>	- 7.5	- 0.8	- 4.8	- 17.8	10.5	- 21	- 5.9	- 8.5	
<b>Joint formats</b>									
2001-02	<i>In electronic</i>		<i>In electronic</i>		<i>In electronic</i>		<i>In electronic</i>		
02-03	<i>In electronic</i>		<i>In electronic</i>		<i>In electronic</i>		<i>In electronic</i>		
03-04	125	17	43	12	13	21	181	15	
04-05	99	14	53	13	10	11	162	14	
<i>Change %</i>									
<i>Last year</i>	- 21	- 15.0	25	7.5	- 23	- 45	- 10.2	- 12.7	
<b>Electronic only</b>									
2001-02	308	47	173	67	38	60	519	53	
02-03	389	54	228	75	60	72	678	61	
03-04	371	50	256	70	31	49	658	56	
04-05	367	53	306	72	58	66	731	61	
<i>Change %</i>									
<i>Last year</i>	- 1.1	6.1	19.8	3.3	87	34	11.2	8.1	

Source: SCOUNL

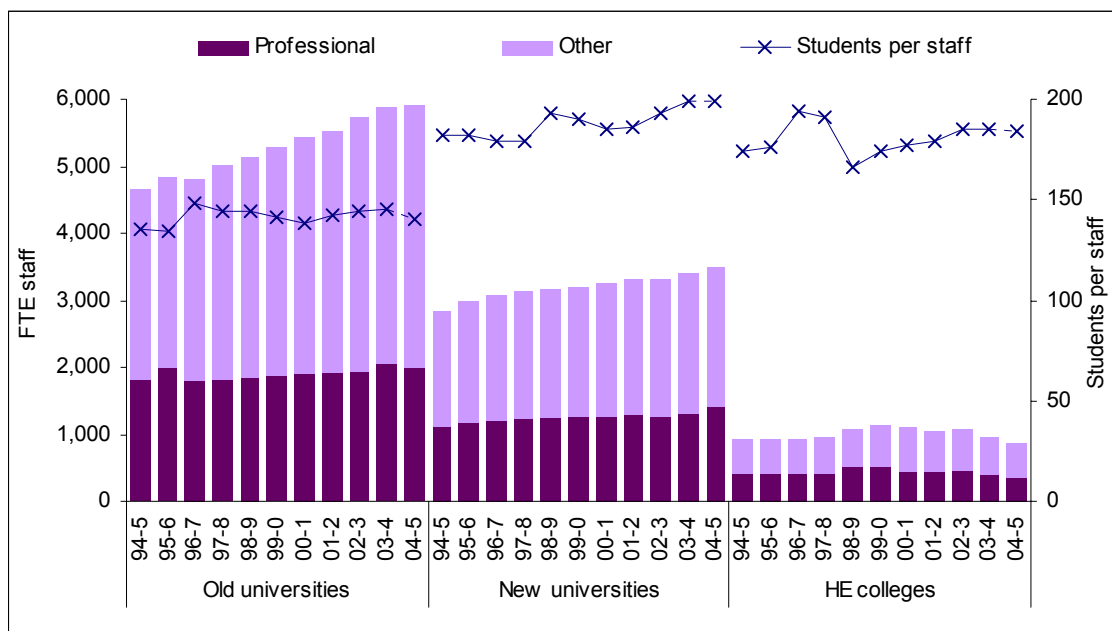
## Tables 3.15 and 3.16 Library Staff

Table 3.15 shows the total number of library staff employed in the sector, and the number of students per staff member. Fig 3.12 illustrates the proportion of these staff who are professional library staff – around half in HE colleges; less in universities. Consideration of the numbers of students per FTE staff member is again complicated by the change in definitions of student FTEs. Taking this into account, there have been increases in staff workload in all sectors this year, with an average of 164 FTE students (excluding NCB) in 2004-05 compared to 162 last year, and 155 in 1999-2000.

Table 3.16 shows total expenditure on library staff, and expenditure on library staff per FTE student. The figures for universities, drawn from SCONUL returns throughout, exclude London weighting where applicable; this accounts for less than 10% of the total staff expenditure of universities in London. Data from the HE colleges were collected in a different way, and it was not possible to exclude the costs of London weighting in most cases prior to 2000-01. It should be noted that relatively few are London based. All figures exclude the costs of temporary and casual staff.

Table 3.16 also shows average cost per staff member. Note that these figures represent the total library staff expenditure divided by total library staff, and as such include on-costs. They are not average salary figures, and will be influenced by the relative balance between professional and para-professional staff. The differences between the university sectors apparent at the start of the period covered have disappeared, although the average staff cost in HE colleges continues to be below that in the universities. Average staff costs overall have kept pace with wage inflation over the last year, and over five years, although there are some differences between the sectors. Over ten years, however, no sector has increased its average staff cost in line with inflation. The relationship between staff costs and inflation is complicated by the rate of staff turnover, and a failure to match inflation increases overall may indicate a higher staff turnover, replacing relatively costly senior staff with more junior employees.

**Fig 3.12 Number of library staff (FTE)**



**Table 3.15 Library staff numbers (FTE)**

	Old universities		New universities		HE colleges		All HE sector	
	No.	Students per staff	No.	Students per staff	No.	Students per staff	No.	Students per staff
1994-95	4,650	135	2,842	182	940	174	8,432	155
95-96	4,840	134	2,972	182	940	176	8,752	155
96-97	4,820	148	3,069	179	940	194	8,829	164
97-98	5,020	144	3,136	179	960	191	9,116	161
98-99	5,120	144	3,163	193	1,080	166	9,363	163
1999-2000	5,290	141	3,194	190	1,120	174	9,604	161
2000-01	5,440	138	3,248	185	1,100	177	9,788	158
01-02	5,520	142	3,299	186	1,040	179	9,859	161
02-03	5,720	144	3,303	193	1,080	185	10,103	164
03-04	5,870	145	3,409	199	960	185	10,239	167
04-05	5,900	140	3,484	199	870	185	10,254	164
<i>Change %</i>								
<i>Last year</i>	<i>0.5</i>		<i>2.2</i>		<i>- 9.4</i>		<i>0.1</i>	
<i>5 year</i>	<i>11.5</i>		<i>9.1</i>		<i>- 22</i>		<i>6.8</i>	
<i>10 year</i>	<i>27</i>		<i>23</i>		<i>- 7.4</i>		<i>22</i>	

Source: SCOUNL/HCLRG

**Table 3.16 Expenditure on library staff (£'000 – excluding London weighting)**

	Old universities			New universities			HE colleges *			All HE sector		
	£'000	£ per FTE	Average cost per staff	£'000	£ per FTE	Average cost per staff	£'000	£ per FTE	Average cost per staff	£'000	£ per FTE	Average cost per staff
1994-95	82,228	131	17,683	44,986	87	15,829	14,018	85	14,913	141,232	108	16,750
95-96	87,799	135	18,140	49,983	93	16,818	14,947	91	15,901	152,728	113	17,451
96-97	91,733	129	19,032	51,478	94	16,774	14,221	78	15,129	157,433	109	17,831
97-98	95,388	132	19,002	53,347	95	17,011	15,492	85	16,138	164,288	112	18,022
98-99	100,175	136	19,565	55,327	91	17,992	19,089	107	17,675	174,591	115	18,647
1999-2000	109,429	147	20,686	58,427	96	18,293	19,629	101	17,526	187,485	121	19,522
2000-01	110,645	148	20,339	61,129	102	18,821	19,880	102	18,073	191,654	124	19,581
01-02	115,779	147	20,974	64,915	106	19,677	19,715	106	18,957	200,410	126	20,328
02-03	122,687	149	21,449	70,574	110	21,367	21,349	107	19,768	214,610	129	21,242
03-04	132,595	156	22,589	77,235	114	22,656	19,871	112	20,699	229,701	135	22,438
04-05	141,542	172	23,990	81,557	118	23,409	18,969	118	21,803	242,068	144	23,607
<i>Change %</i>												
<i>Last year</i>	<i>6.7</i>		<i>6.2</i>	<i>5.6</i>		<i>3.3</i>	<i>- 4.5</i>		<i>5.3</i>	<i>5.4</i>		<i>5.2</i>
<i>5 year</i>	<i>29</i>		<i>16.0</i>	<i>40</i>		<i>28</i>			<i>24</i>	<i>29</i>		<i>21</i>
<i>10 year</i>	<i>72</i>		<i>36</i>	<i>81</i>		<i>48</i>			<i>46</i>	<i>71</i>		<i>41</i>

\* includes London weighting up to 1999-2000

Source: SCOUNL/HCLRG

Change in Index of Average Earnings: last year + 4.0%; 5 years + 21%; 10 years + 51%

## Tables 3.17 and 3.18 Library provision

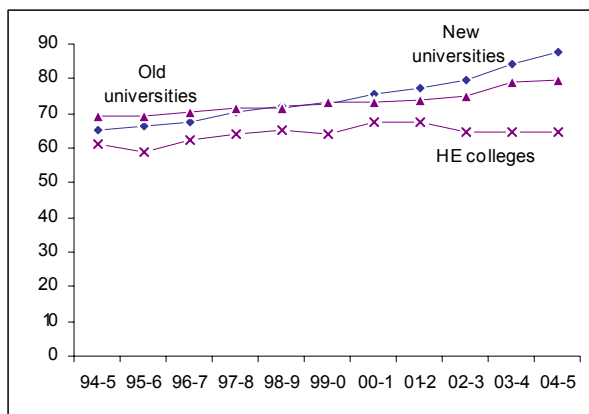
Table 3.17 shows the number of seat hours per week available for users in academic libraries. These figures are calculated by multiplying the number of seats available in each library by the normal weekly term-time opening hours of that library, then summing across all libraries. The figure will be affected by changing opening hours and changing numbers of seats available.

There have been substantial increases in this measure over the period in all sectors, except the HE colleges. Both numbers of seats and opening hours have increased – Fig 3.13 shows the growth in average opening hours. The greatest increase in opening hours has been in the new universities, which are now open on average for 88 hours per week, an increase of 35% over the last ten years. Excluding NCB students, there has been a 2.5% increase in the seat hours per week available per FTE student in the last year overall, with a slight drop of 0.6% over the last five years.

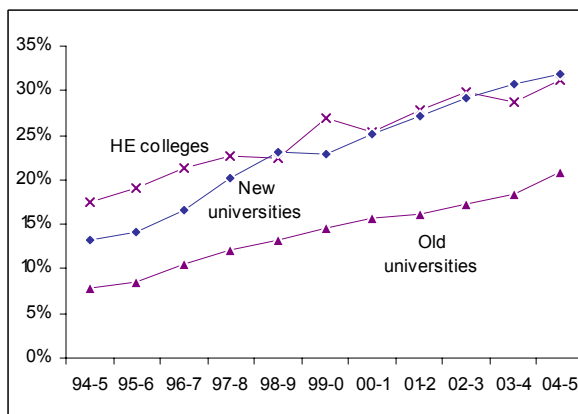
Table 3.18 shows the number of workstations available for users in the library. With the increasing emphasis on the provision and use of electronic resources, this is an important aspect of the user’s experience of library facilities. Unsurprisingly, growth has been considerable, and the number of students per workstation has fallen dramatically over the period. Fig 3.14 illustrates this growth, as the proportion of seats with workstations has increased. With increasing provision of electronic resources available to users remotely, in computer labs or at their desks, it might be thought that the rate of growth would slow but this does not appear to be the case. Some of the fluctuation in the statistics for the HE colleges in particular may be accounted for by changes in reporting practice in converged library/computing services, where nominal “ownership” of workstations may change between departments.

Statistics on the provision of workstations throughout universities and HE colleges and on the estimated proportion of students with personal computers are available from the Universities and Colleges Information Systems Association (<http://www.ucisa.ac.uk>). Whilst there is now, on average, one library workstation for every 36 students, UCISA estimates that, institution wide, there is one centrally provided workstation for every eight students, an increase of 25% over five years. Further, around three quarters of students are thought to possess their own PC, and half of all institutions have network points in all their halls of residence. This increase in the availability of appropriate technology, and the increasing sophistication with which it is used, is already having far-reaching effects on academic libraries and the ways in which students access information.

**Fig 3.13 Average opening hours**



**Fig 3.14 Workstations as percentage of total seats**



**Table 3.17 Seat hours per week**

	Old universities		New universities		HE colleges		All HE sector	
	'000	per FTE student	'000	per FTE student	'000	per FTE student	'000	per FTE student
1994-95	5,602	8.9	3,064	5.9	983	6.0	9,649	7.4
95-96	5,767	8.9	3,383	6.3	991	6.0	10,140	7.5
96-97	6,337	8.9	3,896	7.1	1,078	5.9	11,312	7.8
97-98	6,721	9.3	4,322	7.7	1,162	6.3	12,205	8.3
98-99	6,935	9.4	4,620	7.6	1,224	6.8	12,780	8.4
1999-2000	7,401	9.9	4,665	7.7	1,285	6.6	13,342	8.6
2000-01	7,266	9.7	4,649	7.8	1,226	6.3	13,140	8.5
01-02	7,530	9.6	4,833	7.9	1,160	6.2	13,524	8.5
02-03	7,620	9.3	4,910	7.7	1,147	5.7	13,677	8.2
03-04	8,059	9.4	5,248	7.7	1,102	6.2	14,409	8.4
04-05	8,414	10.2	5,571	8.0	988	6.1	14,973	8.9
<i>Change %</i>								
<i>Last year</i>	4.4		6.2		- 10.3		3.9	
<i>5 year</i>	13.7		19.7		- 23		12.2	
<i>10 year</i>	50		82		0.5		55	

Source: SCOUNL/HCLRG

**Table 3.18 Number of workstations**

	Old universities		New universities		HE colleges		All HE sector	
	No.	Students per workstation	No.	Students per workstation	No.	Students per workstation	No.	Students per workstation
1994-95	6,340	99	6,176	84	2,780	59	15,296	86
95-96	7,190	90	7,157	75	3,170	52	17,517	77
96-97	9,640	74	9,552	58	3,700	49	22,892	63
97-98	11,350	64	12,472	45	4,070	45	27,892	53
98-99	12,930	57	14,758	41	4,250	42	31,938	48
1999-2000	14,680	51	14,640	41	5,390	36	34,710	45
2000-01	15,610	48	15,488	39	4,560	43	35,658	43
01-02	16,510	48	17,001	36	4,750	39	38,261	41
02-03	17,580	47	17,935	36	5,340	37	40,855	41
03-04	18,870	45	19,094	35	4,930	36	42,881	40
04-05	21,940	38	20,164	34	4,780	34	46,884	36
<i>Change %</i>								
<i>Last year</i>	16.1		5.6		- 2.4		9.3	
<i>5 year</i>	49		38		- 11.5		35	
<i>10 year</i>	248		227		71		207	

Source: SCOUNL/HCLRG

## Tables 3.19 – 3.21 Library use

Book issues were considered in the section on stock in Table 3.12 (page 144). This section covers other aspects of library use, namely, visits, enquiries and inter-library loans. SCONUL has begun to collect data on the number of successful requests for full text articles and accesses to e-books, although these data are far from complete, and are not yet sufficiently reliable to be presented here.

### Visits

Table 3.19 (page 152) shows the estimated number of physical visits made annually to library premises. Although many academic libraries have automatic visitor counters as part of their normal security arrangements, in some cases the figure is obtained from a sample count, and so may be less reliable than some of the other figures presented in this report. Readers should also be aware that for the HE colleges in particular there has been a greater than usual degree of estimation required for missing data, particularly in the earliest years.

The patterns of library visiting are rather different in the three sectors and different from those for loans. The number of visits per student is declining with an overall fall of 10% in the number of visits per FTE student over the last five years (taking account of the changing definition of student FTEs) (Fig 3.15). One possibility for this declining use of library buildings may lie in the increasing availability of electronic resources at other locations. It seems likely that, while users who wish to use print materials continue to visit the library and borrow books, those who prefer electronic resources have less need to visit the library to obtain access. It is thus becoming ever more important to monitor the use made of electronic resources, which are taking up an increasing proportion of library budgets.

Fig 3.15 illustrates the increase in numbers of loans per visit. With fewer than one loan per visit, book borrowing is clearly not the main reason for visiting academic libraries, although little research has been published on what users actually do when they visit. Although many HE libraries survey their users on a regular basis, there is no national collation or comparison of the outcomes, and no standard methodology such as that adopted by the public libraries. A number of different instruments are used, and further information is available from SCONUL.

### Enquiries

Table 3.20 (page 152) shows the trends in estimated annual enquiries in universities. These figures were not collected by HCLRG and have been poorly completed by the HE colleges since reporting to SCONUL. After allowing for the change in the definition of student FTEs, the decline in the number of enquiries per FTE student may show signs of slowing. Although there has been a 30% fall over the last five years in both university sectors, the fall in the latest year is just 1.5% for the new universities, and there has been an increase of 1.2% in the old universities this year.

### Inter-library loans

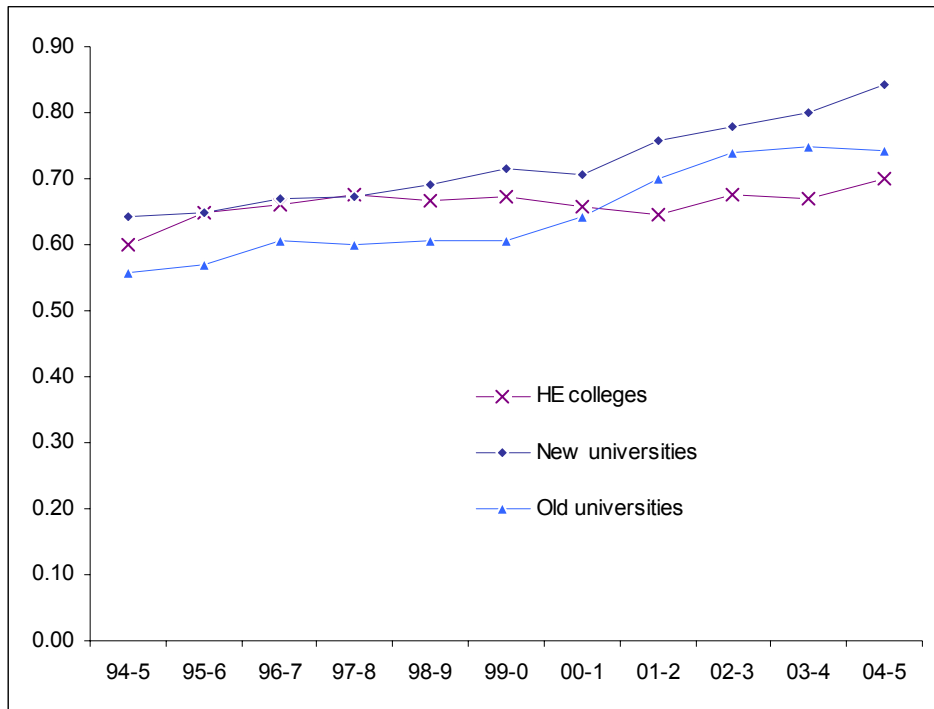
The final table in this section, Table 3.21 (page 153), shows the number of items obtained through inter-library loans or document delivery agencies. The higher figures for old universities are likely to be a consequence of the greater emphasis placed on research in these institutions. Within each sector there is considerable variation, however, with some universities placing deliberate emphasis on obtaining material via inter-library loan rather

than keeping extensive holdings, particularly of journal titles. Note that the majority of inter-library loan material is still obtained via BLDSC, whether as photocopies or loans of original documents.

In all sectors, both the total number of inter-library loans and the proportion of loans which are accounted for by inter-library lending and document delivery is falling. Less than 1% of loans are now accounted for by inter-library lending. While this may be indicative of an increasing ability of library collections to meet users' needs directly, it may also be related to the expansion of electronic resources. Increasing numbers of articles are now available direct to the user's desktop, from the increasing variety of journals to which academic libraries subscribe. The recent rise in open access publishing is also likely to play a part.

There is increasing availability of documents delivered directly to a researcher's desktop (with personal credit card payment). Such document delivery does not pass through the library, and is beyond the scope of these statistics. At present, the volumes of such transactions are not monitored by SCONUL or any other agency.

**Fig 3.15 Issues per visit**



**Table 3.19 Visits**

	Old universities		New universities		HE colleges		All HE sector	
	'000	per FTE student	'000	per FTE student	'000	per FTE student	'000	per FTE student
1994-95	53,727	85	38,822	75	13,215	81	105,765	81
95-96	54,990	85	40,963	76	12,581	76	108,534	80
96-97	55,840	78	44,454	81	13,170	72	113,463	79
97-98	59,485	82	44,875	80	13,753	75	118,113	81
98-99	60,976	83	45,496	75	13,891	78	120,364	79
1999-2000	61,923	83	43,205	71	15,241	78	120,369	78
2000-01	60,620	81	43,247	72	15,419	79	119,286	77
01-02	59,393	76	43,232	70	14,846	80	117,472	74
02-03	59,622	73	43,838	69	15,145	76	118,605	71
03-04	64,126	74	45,363	67	13,851	78	123,340	72
04-05	64,422	78	46,078	66	11,843	74	122,342	73
<i>Change %</i>								
<i>Last year</i>	0.5		1.6		- 14.5		- 0.8	
<i>5 year</i>	4.0		6.6		- 22		1.6	
<i>10 year</i>	19.9		18.7		- 10.4		15.7	

Source: SCONUL/HCLRG

**Table 3.20 Estimated annual enquiries**

	Old universities		New universities	
	'000	per FTE student	'000	per FTE student
1994-95	5,654	9.0	4,972	9.6
95-96	6,322	9.7	5,163	9.6
96-97	7,145	10.0	5,531	10.0
97-98	7,906	10.9	5,307	9.5
98-99	8,198	11.1	5,118	8.4
1999-2000	8,585	11.5	5,313	8.8
2000-01	8,028	10.7	4,467	7.5
01-02	7,819	10.0	4,281	7.0
02-03	7,317	8.9	4,361	6.8
03-04	6,699	7.9	4,211	6.2
04-05	6,851	8.3	4,320	6.2
<i>Change %</i>				
<i>Last year</i>	2.3		2.6	
<i>5 year</i>	- 20		- 18.7	
<i>10 year</i>	21		- 13.1	

This measure was not collected by HCLRG – see commentary  
Source: SCONUL

**Table 3.21 Inter-library loans**

	Old universities		New universities		HE colleges		All HE sector	
	'000	% of all loans	'000	% of all loans	'000	% of all loans	'000	% of all loans
1994-95	792	2.6	445	1.8	98	1.2	1,335	2.1
95-96	827	2.6	504	1.9	96	1.2	1,426	2.2
96-97	800	2.4	490	1.6	84	1.0	1,374	1.9
97-98	808	2.3	449	1.5	84	0.9	1,341	1.8
98-99	808	2.2	441	1.4	86	0.9	1,335	1.7
1999-2000	785	2.1	402	1.3	94	0.9	1,281	1.6
2000-01	685	1.8	354	1.2	96	0.9	1,135	1.4
01-02	633	1.5	335	1.0	87	0.9	1,055	1.3
02-03	565	1.3	293	0.9	85	0.8	943	1.1
03-04	513	1.1	274	0.8	76	0.8	862	0.9
04-05	470	1.0	242	0.6	60	0.7	772	0.8
<i>Change %</i>								
<i>Last year</i>	- 8.4	- 8.1	- 11.8	- 17.5	- 21	- 11.9	- 10.6	- 11.9
<i>5 year</i>	- 40	- 53	- 40	- 52	- 36	- 21	- 40	- 50
<i>10 year</i>	- 41	- 62	- 46	- 65	- 39	- 41	- 42	- 61

Source: SCOUNL/HCLRG